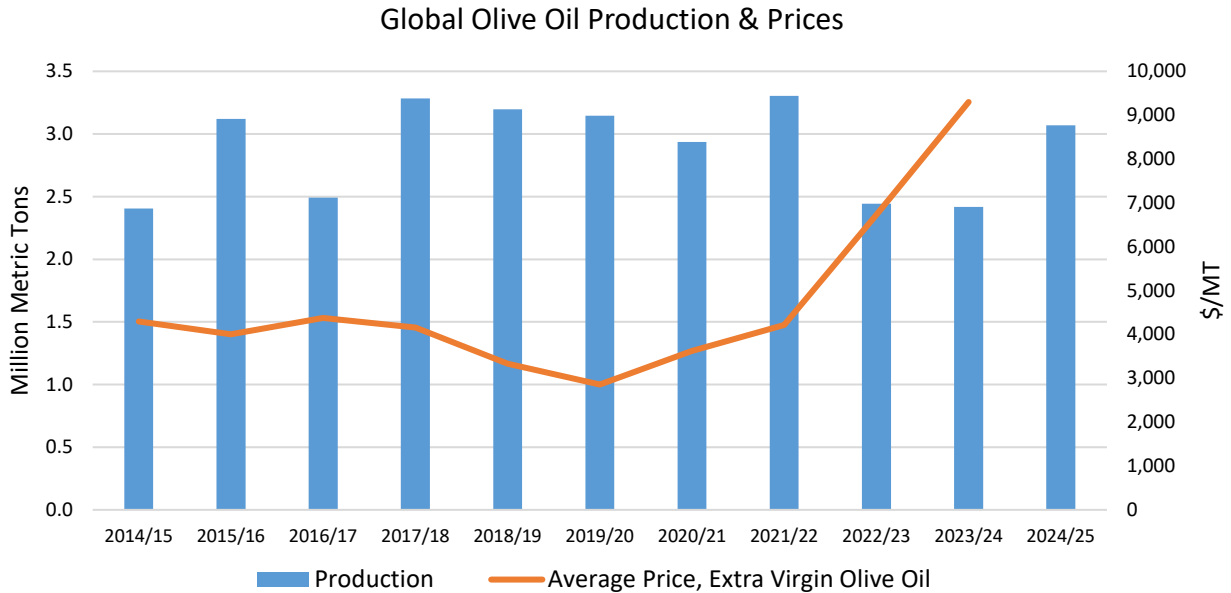


Oilseeds: World Markets and Trade

Global Olive Oil Production Forecast to Rebound in 2024/25



Price Source: IMF Primary Commodity Price System

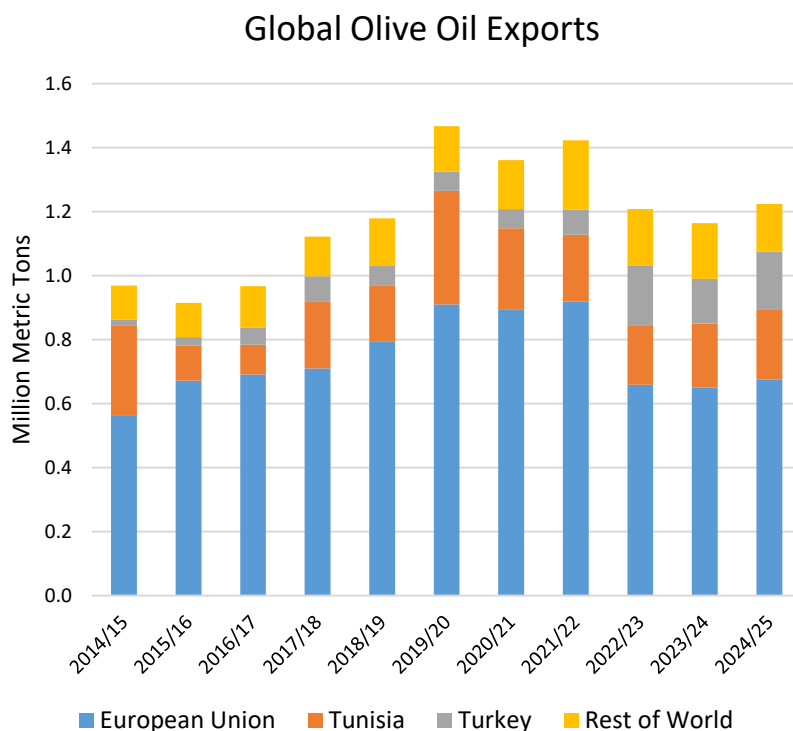
Global olive oil production in 2024/25 is expected to reach almost 3.1 million tons, up 27 percent from last year. This marks a recovery following 2 years of smaller harvests that significantly reduced global supplies and brought prices up to the highest level on record. Most of the world’s olives used to manufacture olive oil are grown in countries surrounding the Mediterranean Sea. This region experienced drought and poor weather conditions in 2022/23 and 2023/24 that negatively affected olive crop yields for many producers. Yields are also expected to be higher in 2024/25 due to the on-year of the alternate bearing crop cycle for olive trees in many growing regions in Spain, Greece, Portugal, Turkey, and Tunisia. Harvest has begun in the Mediterranean region and most producers are expecting a strong crop year, though prices will likely remain elevated due to low global beginning stocks.

The European Union is forecast to produce almost 2.0 million tons of olive oil in 2024/25, up from 1.5 million produced in 2023/24. About two-thirds of European Union olive oil is produced in Spain, where favorable temperatures and rainfall in growing regions during spring and winter contributed to what is expected to be a strong harvest. In Greece and Portugal, production is also expected to rise on favorable weather conditions. Meanwhile, Italy’s production, which had a comparatively strong year in 2023/24, is expected to fall as many olive trees enter a lower yield off-year and on drought and heat in top growing regions in southern Italy.

Olive oil production in most other Mediterranean countries is also expected to rebound in 2024/25. Turkey and Tunisia, the world’s top producers behind the European Union, are both expected to have strong harvests. Turkey is forecast to produce 350,000 tons of olive oil, up significantly from 190,000 last year, as weather conditions improved and as many trees entered an on-year. Tunisia is forecast to produce 280,000 tons, up from 220,000 last year and following an upward trend due to industry expansion and modernization. Conversely, Morocco is not expected to make a substantial recovery due

to poor weather conditions; production is forecast nearly flat in 2024/25 at 110,000 tons and below the 2017/18 to 2021/22 average of 167,000.

Global olive oil exports are forecast to increase to over 1.2 million tons in 2024/25, up 5 percent from last year, but still below the 2017/18 to 2021/22 average of 1.3 million. The world’s top three exporters – the European Union, Tunisia, and Turkey – are all expected to export larger volumes. Global consumption is forecast to increase by 17 percent, reaching over 2.8 million tons. Consumption is expected to grow at a lower rate than production as producing countries replenish stocks that were diminished during the past 2 low-production years. The magnitude of price reductions over the next year will be tempered by the recovery of global supplies, which are forecast to remain below pre-2022/23 levels.



DATA SERIES REVISIONS

Venezuela Soybean Revision

Venezuela soybean production was revised from 2004/05 to 2024/25 due to the adoption of production data from the Food and Agriculture Organization of the United Nations (FAO). In line with this change, utilization of soybeans in Venezuela was also revised with adjustments to crush impacting soybean oil and soybean meal production and consumption.

OVERVIEW 2024/25

The global oilseeds production forecast is down over 5.1 million tons to 682.2 million this month on lower U.S. soybeans and Sudan peanuts. Oilseeds trade is lowered over 200,000 tons to 207.4 million tons as declines of U.S. soybean exports were not offset by higher Brazil soybean exports. Oilseeds ending stocks are lowered almost 3.2 million tons on reduced U.S., Brazil, and Argentina soybean stocks. Global crush is decreased over 800,000 tons to 556.9 million tons on lower U.S. soybean crush and Turkey sunflowerseed crush, not offset by higher Pakistan soybean crush. Global meal trade is down over 100,000 tons to 106.1 million tons on lower European Union rapeseed meal exports and U.S. soybean meal exports. Global vegetable oil trade is up over 100,000 tons to 86.7 million tons on increased Argentina soybean oil and European Union and Tunisia olive oil trade, not offset by lower Belarus and European Union rapeseed oil exports.

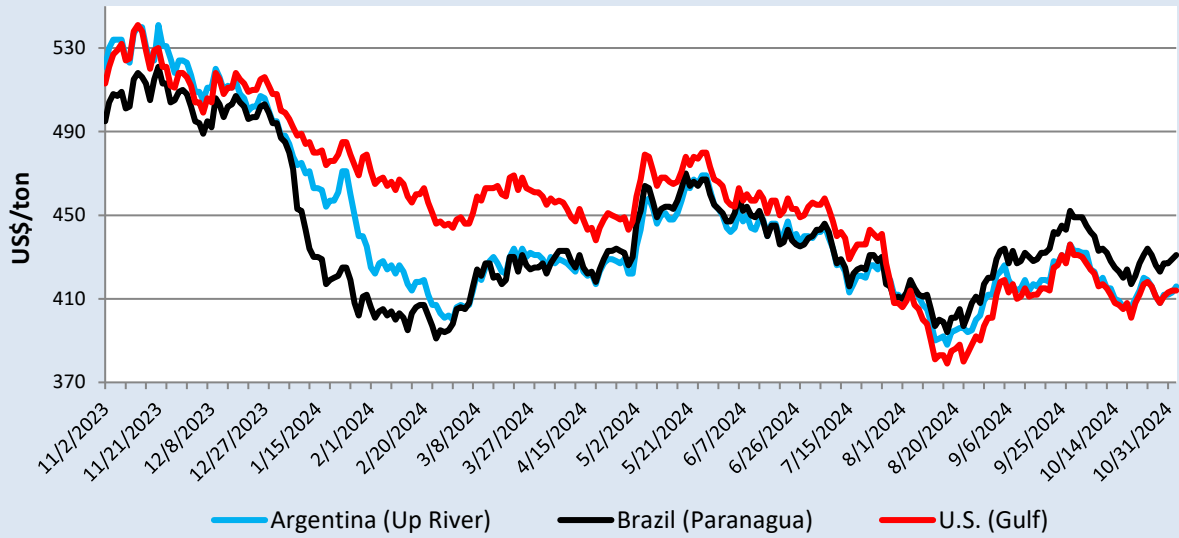
The projected U.S. season-average farm price for soybeans is unchanged at \$10.80 per bushel.

EXPORT PRICES

Since the last WASDE report, soybean prices fell on improved rainfall and planting progress in Brazil but rose in the last 2 weeks due to reduced exportable supplies in Brazil before next year's harvest. Brazil soybeans have traded at a premium to U.S. and Argentina beans since early September as their exportable surplus seasonally declines, increasing demand for U.S. soybeans as the harvest starts to conclude.

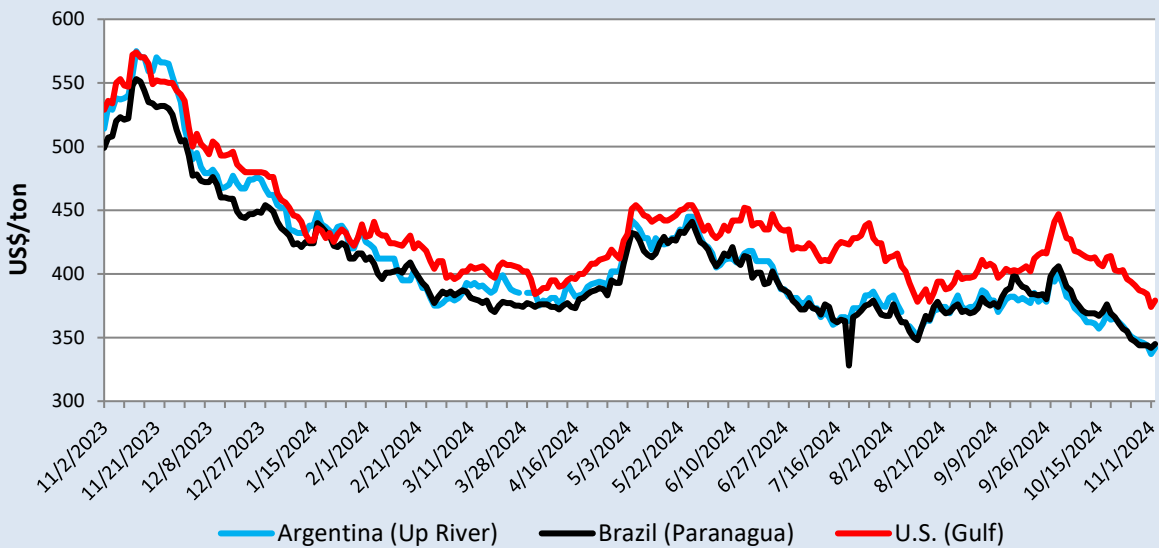
Strong soybean crush in the United States and Argentina and the delayed implementation of the European Union Deforestation Regulation (EUDR) are contributing to falling prices for soybean meal. Tight supplies of palm oil and new government policies in Indonesia are contributing to higher palm prices. In October, the government of Indonesia announced plans to increase the current biodiesel mandate to B40, prompting importers to increase purchases in anticipation. Additionally, the government of Indonesia imposed a new tax on palm oil exports. This tax is contributing to the premium on Indonesia palm oil, currently higher relative to soybean oil. U.S. soybean oil is trading at a discount to South America soybean oil, prompting sales to price sensitive markets such as India.

SOYBEAN EXPORT PRICES



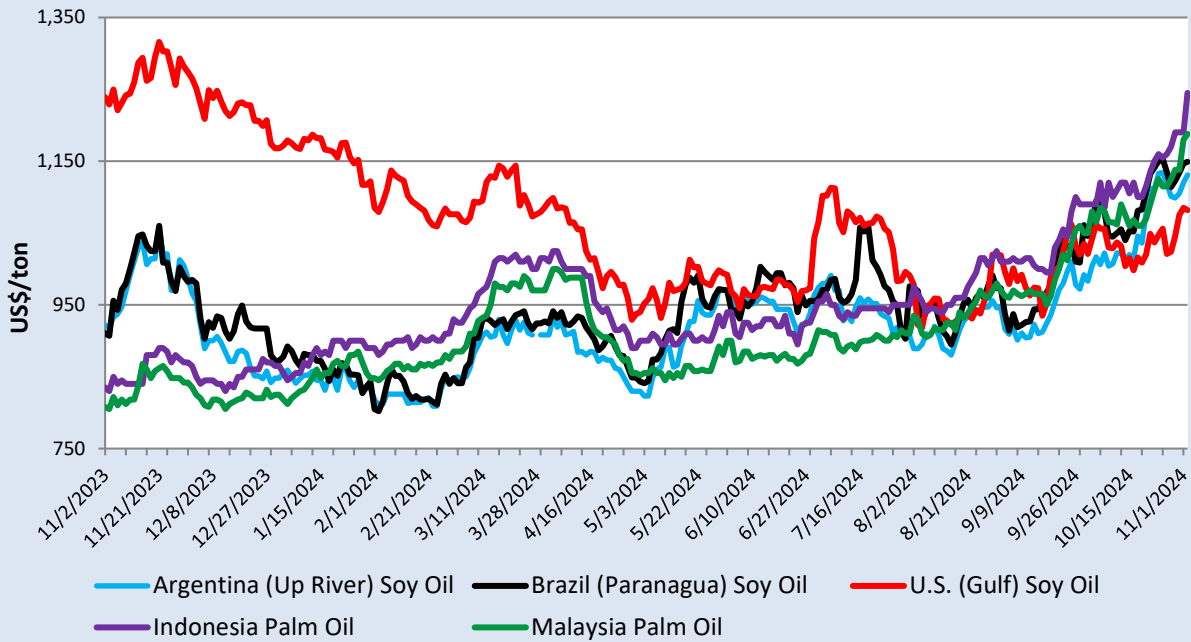
Source: International Grains Council. All prices are FOB: U.S. Gulf, Argentina Up River, and Brazil Paranagua.

SOYBEAN MEAL EXPORT PRICES



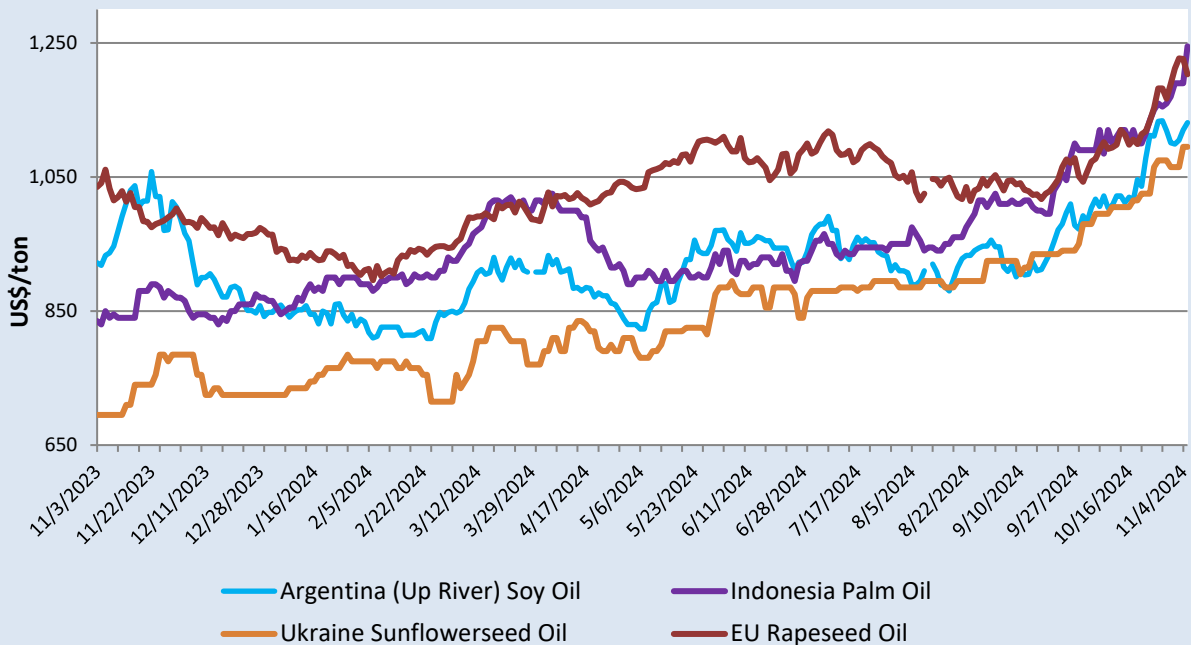
Source: International Grains Council. All prices are FOB: U.S. Gulf, Argentina Up River, and Brazil Paranagua.

SOYBEAN AND PALM OIL EXPORT PRICES



Source: International Grains Council

VEGETABLE OIL EXPORT PRICES



Source: International Grains Council

2024/25 OUTLOOK CHANGES (All figures are in thousand metric tons)

Country	Commodity	Attribute	Previous	Current	Change	Reason
Brazil	Oilseeds, Soybean	Exports	105,000	105,500	500	Higher global demand and lower U.S. exports
Canada	Oilseed, Soybean	Exports	4,300	4,600	300	Higher 2023/24 carryin
European Union	Oilseed, Rapeseed	Exports	500	300	-200	Reduced production outlook
Pakistan	Oilseed, Soybean	Imports	1,200	1,500	300	Raised in line with 2023/24 forecast
United States	Oilseeds, Soybean	Exports	50,349	49,668	-681	Lower production and sales to date

2023/24 OUTLOOK CHANGES (All figures are in thousand metric tons) – Trade pace to date.

Country	Commodity	Attribute	Previous	Current	Change
Argentina	Meal, Soybean	Exports	24,700	24,889	189
	Oilseed, Soybean	Imports	7,400	7,787	387
Burma	Meal, Soybean	Imports	450	210	-240
	Oil, Palm	Imports	850	670	-180
China	Meal, Fish	Imports	1,750	1,950	200
	Oil, Palm	Imports	4,700	4,377	-323
	Oilseed, Rapeseed	Imports	5,000	5,486	486
European Union	Meal, Soybean	Imports	16,300	16,500	200
	Oilseed, Soybean	Imports	13,800	13,600	-200
India	Oil, Palm	Imports	8,500	8,800	300
Indonesia	Meal, Palm Kernel	Exports	5,000	4,684	-316
	Oil, Palm	Exports	23,000	22,273	-727
	Meal, Soybean	Imports	5,750	5,055	-695
	Oilseed, Soybean	Imports	2,400	2,567	167
Iran	Oil, Soybean	Imports	275	22	-253
Pakistan	Oilseed, Soybean	Imports	500	800	300
Peru	Meal, Fish	Exports	820	1,000	180
Russia	Oilseed, Rapeseed	Exports	800	1,000	200
United Arab Emirates	Meal, Soybean	Imports	275	500	225
	Oilseed, Rapeseed	Imports	900	1,100	200

ENDNOTES

REGION DEFINITIONS

North America: Canada, Mexico, the United States

Central America: Belize, Costa Rica, El Salvador, Guatemala, Honduras, Nicaragua, Panama

Caribbean: Cuba, Dominican Republic, Haiti, Jamaica, Trinidad and Tobago

South America: Argentina, Bolivia, Brazil, Chile, Colombia, Ecuador, Guyana, Paraguay, Peru, Suriname, Uruguay, Venezuela

EU: Austria, Belgium/Luxembourg, Bulgaria, Croatia, Cyprus, Czech Republic, Denmark, Estonia, Finland, France, Germany, Greece, Hungary, Ireland, Italy, Latvia, Lithuania, Malta, Netherlands, Poland, Portugal, Romania, Slovakia, Slovenia, Spain, and Sweden. Effective January 1, 2021, the separation of the United Kingdom (UK) from the European Union (EU) was complete, including trade between both entities. Starting in May 2021 with the release of 2021/22 data, grain PSDs reflect EU27 (shown in the PSD system as “European Union”) and UK separately. Beginning with the release of 2021/22 data, historical data for both EU27 and the UK are provided for 5 years (2016/17 through 2020/21).

Other Europe: Albania, Bosnia and Herzegovina, Former Yugoslavia, Gibraltar, Iceland, North Macedonia, Montenegro, Norway, Serbia, Switzerland, United Kingdom

Former Soviet Union: Armenia, Azerbaijan, Belarus, Georgia, Kazakhstan, Kyrgyzstan, Moldova, Russia, Tajikistan, Turkmenistan, Ukraine, Uzbekistan

Middle East: Afghanistan, Bahrain, Iran, Iraq, Israel, Jordan, Kuwait, Lebanon, Oman, Qatar, Saudi Arabia, Syria, Turkey, United Arab Emirates, and Yemen

North Africa: Algeria, Egypt, Libya, Morocco, Tunisia

Sub-Saharan Africa: all African countries except North Africa

East Asia: China, Hong Kong, Japan, South Korea, North Korea, Macau, Mongolia, Taiwan

South Asia: Bangladesh, Bhutan, India, Nepal, Pakistan, Sri Lanka

Southeast Asia: Brunei, Burma, Cambodia, Indonesia, Laos, Malaysia, Philippines, Singapore, Thailand, Vietnam

Oceania: Australia, Fiji, New Zealand, Papua New Guinea

OTHER NOTES

Marketing Years (MY): MY refers to the 12-month period at the onset of the main harvest, when the crop is marketed (i.e., consumed, traded, or stored). The year first listed begins a country's MY for that commodity (2022/23 starts in 2022); except for oilseeds in certain Southern Hemisphere countries, where the second year begins the MY (2022/23 starts in 2023). For a complete list of local marketing years, please see the FAS website (<https://apps.fas.usda.gov/psdonline/>): go to Reports, Reference Data, and then Data Availability.

Stocks: Unless otherwise stated, stock data are based on an aggregate of differing local marketing years and should not be construed as representing world stock levels at a fixed point in time.

Consumption: World totals for consumption reflect total utilization, including food, seed, industrial, feed, and waste; as well as differences in local marketing year imports and local marketing year exports. Consumption statistics for regions and individual countries, however, reflect food, seed, industrial, feed, and waste only.

Trade: All PSD tables are balanced on the different local marketing years.

Oilseeds HS Codes

	Seed	Meal	Oil
Soybeans	1201	2304, 230250, 120810	1507
Peanuts	Unshelled: 120210, 120241 Shelled: 120220, 120242, 120230, 200811XX ^[1]	2305	1508
Copra	1203	230650	151311, 151319
Rapeseed	1205	230640, 230641, 230649	1514
Sunflowerseed	1206	230630	151211, 151219
Palm Kernel	120710	230660	151321, 151329
Cottonseed	120720, 120721, 120729	230610	151221, 151229
Palm			1511
Olive			1509, 1510
Fish		230120	

^[1] Peanut butter is found at the 8- or 10-digit level and varies by reporting country. Argentina and India do not report peanut butter trade.

The Global Commodity Analysis Division, Global Market Analysis, Foreign Agricultural Service, USDA, Washington, DC 20250 prepared this publication. Information is gathered from official statistics of foreign governments and other foreign source materials, reports of U.S. agricultural attachés and Foreign Service officers, office research, and related information. Further information may be obtained by writing the Division.

Note: For further details on world oilseeds production, please see [World Agricultural Production](#). This publication is available in its entirety on the Internet via the Foreign Agricultural Service Home Page. The address is: <http://www.fas.usda.gov>

Questions may be directed to:

Luke Cummings	(202) 777-9015	Luke.Cummings@usda.gov
Britt Couch	(202) 777-9055	Brittney.Couch@usda.gov
Emma Aspell	(202) 720-9713	Emma.Aspell@usda.gov

To download the tables in the publication, go to the Production, Supply, and Distribution Database (PSD Online): (<http://apps.fas.usda.gov/psdonline/psdHome.aspx>), scroll down to Reports, and click the plus sign [+] next to Oilseeds.

The Foreign Agricultural Service (FAS) updates its production, supply, and distribution (PSD) database for cotton, oilseeds, and grains at 12:00 p.m. on the day the *World Agricultural Supply and Demand Estimates* (WASDE) report is released. This circular is released by 12:15 p.m.

FAS Reports and Databases:

Current *World Markets and Trade* and *World Agricultural Production* Reports:

<http://apps.fas.usda.gov/psdonline/psdDataPublications.aspx>

Archives *World Markets and Trade* and *World Agricultural Production* Reports:

<http://usda.mannlib.cornell.edu/MannUsda/viewTaxonomy.do?taxonomyID=7>

Production, Supply and Distribution Database (PSD Online):

<http://apps.fas.usda.gov/psdonline/psdHome.aspx>

Global Agricultural Trade System (U.S. Exports and Imports):

<http://apps.fas.usda.gov/gats/default.aspx>

Export Sales Report:

<http://apps.fas.usda.gov/esrquery/>

Global Agricultural Information Network (Agricultural Attaché Reports):

<http://gain.fas.usda.gov/Pages/Default.aspx>

Other USDA Reports:

World Agricultural Supply and Demand Estimates (WASDE):

<http://www.usda.gov/oce/commodity/wasde/>

Economic Research Service:

<http://www.ers.usda.gov/topics/crops>

National Agricultural Statistics Service:

<http://www.nass.usda.gov/Publications/>

List of Tables

SUMMARY TABLES

Table 01	Major Oilseeds: World Supply and Distribution (Commodity View)
Table 02	Major Protein Meals: World Supply and Distribution (Commodity View)
Table 03	Major Vegetable Oils: World Supply and Distribution (Commodity View)
Table 04	Major Oilseeds: World Supply and Distribution (Country View)
Table 05	Major Protein Meals: World Supply and Distribution (Country View)
Table 06	Major Vegetable Oils: World Supply and Distribution (Country View)

COMMODITY TABLES

Table 07	Soybeans: World Supply and Distribution
Table 08	Soybean Meal: World Supply and Distribution
Table 09	Soybean Oil: World Supply and Distribution
Table 10	Soybeans and Products: World Trade
Table 11	Palm Oil: World Supply and Distribution
Table 12	Rapeseed and Products: World Supply and Distribution
Table 13	Sunflowerseed and Products: World Supply and Distribution
Table 14	Minor Vegetable Oils: World Supply and Distribution

HISTORICAL TABLES

Table 15	World Oilseeds and Products Supply and Distribution
Table 16	World Soybeans and Products Supply and Distribution
Table 17	World Rapeseed and Products Supply and Distribution
Table 18	World Sunflowerseed and Products Supply and Distribution
Table 19	World Palm Oil, Coconut Oil, and Fish Meal Supply and Distribution

COUNTRY TABLES

Table 20	United States Oilseeds and Products Supply and Distribution Local Marketing Years
Table 21	United States Soybeans and Products Supply and Distribution Local Marketing Years
Table 22	Brazil Soybeans and Products Supply and Distribution Local Marketing Years
Table 23	Argentina Soybeans and Products Supply and Distribution Local Marketing Years
Table 24	South East Asia Oilseeds and Products Supply and Distribution
Table 25	Middle East Oilseeds and Products Supply and Distribution
Table 26	European Union Oilseeds and Products Supply and Distribution
Table 27	China Oilseeds and Products Supply and Distribution
Table 28	India Oilseeds and Products Supply and Distribution

Table 01: Major Oilseeds: World Supply and Distribution (Commodity View)

Million Metric Tons

	2020/21	2021/22	2022/23	2023/24	Oct 2024/25	Nov 2024/25
Production						
Oilseed, Copra	5.77	6.03	6.00	6.21	5.81	5.81
Oilseed, Cottonseed	41.70	41.13	42.31	41.33	42.30	42.10
Oilseed, Palm Kernel	19.09	18.88	19.76	20.14	20.86	20.86
Oilseed, Peanut	50.62	51.89	49.44	49.52	51.31	50.37
Oilseed, Rapeseed	74.75	75.83	88.90	89.89	87.44	87.24
Oilseed, Soybean	369.27	360.38	378.60	394.73	428.92	425.40
Oilseed, Sunflowerseed	48.87	56.86	52.78	56.03	50.69	50.44
Total	610.08	611.00	637.80	657.85	687.32	682.22
Imports						
Oilseed, Copra	0.08	0.10	0.08	0.09	0.09	0.09
Oilseed, Cottonseed	0.81	0.98	1.36	1.29	1.15	1.17
Oilseed, Palm Kernel	0.15	0.15	0.15	0.18	0.15	0.15
Oilseed, Peanut	4.33	4.05	4.27	4.19	4.31	4.21
Oilseed, Rapeseed	16.67	13.92	20.05	18.40	16.90	16.80
Oilseed, Soybean	166.20	154.47	167.89	177.90	177.61	177.91
Oilseed, Sunflowerseed	2.72	3.83	3.77	2.54	2.16	2.17
Total	190.96	177.50	197.57	204.59	202.37	202.51
Exports						
Oilseed, Copra	0.10	0.10	0.10	0.08	0.09	0.09
Oilseed, Cottonseed	0.96	1.27	1.07	1.45	1.42	1.42
Oilseed, Palm Kernel	0.05	0.05	0.05	0.05	0.05	0.05
Oilseed, Peanut	5.06	4.43	4.83	4.85	4.78	4.68
Oilseed, Rapeseed	18.03	15.35	19.55	18.01	17.37	17.14
Oilseed, Soybean	165.18	154.44	171.75	177.04	181.53	181.71
Oilseed, Sunflowerseed	2.95	3.95	4.02	2.88	2.35	2.30
Total	192.33	179.57	201.37	204.35	207.59	207.39
Crush						
Oilseed, Copra	5.70	5.96	5.91	5.98	5.78	5.78
Oilseed, Cottonseed	32.34	31.88	32.48	33.02	33.35	33.27
Oilseed, Palm Kernel	19.09	18.73	19.78	20.01	20.80	20.80
Oilseed, Peanut	19.68	19.83	19.15	18.67	19.24	19.24
Oilseed, Rapeseed	72.11	72.06	81.11	84.91	84.84	84.53
Oilseed, Soybean	318.16	316.63	315.29	331.13	346.38	346.15
Oilseed, Sunflowerseed	45.05	46.72	51.40	52.37	47.31	47.17
Total	512.13	511.81	525.12	546.10	557.70	556.94
Ending Stocks						
Oilseed, Copra	0.05	0.06	0.05	0.04	0.04	0.04
Oilseed, Cottonseed	1.66	1.49	1.45	1.58	1.51	1.51
Oilseed, Palm Kernel	0.19	0.33	0.29	0.35	0.33	0.33
Oilseed, Peanut	4.96	5.05	4.38	4.01	3.94	3.72
Oilseed, Rapeseed	6.23	4.75	8.96	10.11	8.05	8.05
Oilseed, Soybean	98.35	92.64	101.01	112.42	134.65	131.74
Oilseed, Sunflowerseed	2.41	7.85	4.15	3.16	2.34	2.28
Total	113.85	112.16	120.27	131.67	150.85	147.67

Totals may not add due to rounding

Table 02: Major Protein Meals: World Supply and Distribution (Commodity View)

Million Metric Tons

	2020/21	2021/22	2022/23	2023/24	Oct 2024/25	Nov 2024/25
Production						
Meal, Copra	1.90	1.97	1.96	1.98	1.92	1.92
Meal, Cottonseed	14.80	14.64	14.91	15.14	15.35	15.31
Meal, Fish	4.86	4.97	4.51	5.13	5.14	5.15
Meal, Palm Kernel	9.98	9.71	10.29	10.37	10.82	10.82
Meal, Peanut	7.85	7.91	7.64	7.46	7.70	7.70
Meal, Rapeseed	41.59	41.93	47.22	49.38	49.27	49.10
Meal, Soybean	249.75	248.16	247.66	260.00	271.65	271.49
Meal, Sunflowerseed	20.28	21.23	23.07	23.28	21.13	21.04
Total	351.01	350.52	357.24	372.75	382.97	382.53
Imports						
Meal, Copra	0.62	0.69	0.62	0.63	0.63	0.63
Meal, Cottonseed	0.29	0.27	0.19	0.24	0.21	0.21
Meal, Fish	3.41	3.59	3.33	3.65	3.61	3.61
Meal, Palm Kernel	7.14	7.36	7.77	7.05	7.47	7.47
Meal, Peanut	0.10	0.13	0.12	0.07	0.09	0.09
Meal, Rapeseed	8.37	7.67	9.29	9.92	10.44	10.45
Meal, Soybean	65.32	67.13	63.36	69.79	71.19	71.26
Meal, Sunflowerseed	7.58	7.35	8.54	9.96	8.00	8.13
Total	92.82	94.18	93.21	101.31	101.64	101.84
Exports						
Meal, Copra	0.55	0.75	0.62	0.62	0.67	0.67
Meal, Cottonseed	0.41	0.45	0.28	0.32	0.32	0.32
Meal, Fish	2.95	2.84	2.50	3.07	3.04	3.07
Meal, Palm Kernel	7.59	7.90	8.07	7.31	7.98	7.98
Meal, Peanut	0.13	0.18	0.18	0.16	0.17	0.17
Meal, Rapeseed	8.23	7.76	9.78	10.19	10.64	10.52
Meal, Soybean	69.44	68.82	67.07	74.70	74.76	74.67
Meal, Sunflowerseed	8.16	7.84	9.16	10.20	8.61	8.67
Total	97.45	96.54	97.65	106.58	106.19	106.06
Domestic Consumption						
Meal, Copra	2.00	1.90	1.96	1.99	1.88	1.88
Meal, Cottonseed	14.69	14.47	14.80	15.07	15.22	15.18
Meal, Fish	5.38	5.64	5.37	5.72	5.68	5.68
Meal, Palm Kernel	9.39	9.31	10.04	10.16	10.25	10.25
Meal, Peanut	7.83	7.85	7.59	7.37	7.62	7.62
Meal, Rapeseed	41.85	41.63	46.97	48.95	49.02	49.07
Meal, Soybean	245.77	245.97	247.01	254.08	266.09	266.18
Meal, Sunflowerseed	20.49	20.98	21.81	22.65	21.05	21.00
Total	347.40	347.76	355.56	365.98	376.82	376.87
Ending Stocks						
Meal, Copra	0.04	0.04	0.04	0.04	0.03	0.03
Meal, Cottonseed	0.11	0.10	0.11	0.10	0.11	0.11
Meal, Fish	0.19	0.27	0.23	0.23	0.24	0.24
Meal, Palm Kernel	0.83	0.68	0.62	0.58	0.61	0.63
Meal, Peanut	0.03	0.03	0.03	0.03	0.03	0.03
Meal, Rapeseed	1.28	1.49	1.25	1.41	1.40	1.38
Meal, Soybean	15.95	16.45	13.38	14.40	16.06	16.29
Meal, Sunflowerseed	1.32	1.08	1.72	2.11	1.52	1.61
Total	19.75	20.13	17.38	18.89	20.00	20.32

Totals may not add due to rounding

Table 03: Major Vegetable Oils: World Supply and Distribution (Commodity View)

Million Metric Tons

	2020/21	2021/22	2022/23	2023/24	Oct 2024/25	Nov 2024/25
Production						
Oil, Coconut	3.58	3.73	3.72	3.77	3.65	3.65
Oil, Cottonseed	4.84	4.80	4.89	4.97	5.03	5.02
Oil, Olive	2.94	3.30	2.44	2.42	2.92	3.07
Oil, Palm	73.36	73.16	76.56	77.28	80.18	80.18
Oil, Palm Kernel	8.43	8.24	8.75	8.85	9.17	9.17
Oil, Peanut	6.38	6.44	6.22	6.06	6.25	6.25
Oil, Rapeseed	29.44	29.17	32.86	34.50	34.41	34.29
Oil, Soybean	60.06	60.05	59.61	62.78	65.54	65.49
Oil, Sunflowerseed	19.01	19.69	21.72	22.13	19.97	19.92
Total	208.03	208.58	216.78	222.76	227.12	227.02
Imports						
Oil, Coconut	1.95	2.24	1.94	1.94	1.89	1.91
Oil, Cottonseed	0.10	0.12	0.08	0.08	0.07	0.07
Oil, Olive	1.21	1.28	1.09	1.08	1.02	1.17
Oil, Palm	46.86	41.60	47.12	43.03	45.99	45.98
Oil, Palm Kernel	2.93	2.55	2.68	2.72	2.84	2.84
Oil, Peanut	0.44	0.29	0.39	0.35	0.36	0.36
Oil, Rapeseed	6.33	5.13	6.89	7.57	7.73	7.73
Oil, Soybean	11.69	11.34	10.81	10.35	11.09	11.21
Oil, Sunflowerseed	9.67	9.68	12.56	13.60	10.43	10.48
Total	81.19	74.23	83.57	80.72	81.42	81.74
Exports						
Oil, Coconut	1.73	2.24	2.18	1.99	1.99	1.99
Oil, Cottonseed	0.10	0.13	0.10	0.08	0.10	0.10
Oil, Olive	1.36	1.42	1.21	1.16	1.11	1.22
Oil, Palm	48.56	43.90	49.52	44.96	47.98	47.98
Oil, Palm Kernel	3.21	2.78	2.97	3.11	3.08	3.08
Oil, Peanut	0.48	0.35	0.35	0.46	0.39	0.39
Oil, Rapeseed	6.42	5.21	6.55	7.41	7.87	7.78
Oil, Soybean	12.61	12.44	11.71	11.87	12.00	12.10
Oil, Sunflowerseed	11.34	11.22	14.28	15.04	12.03	12.03
Total	85.79	79.69	88.86	86.08	86.55	86.67
Domestic Consumption						
Oil, Coconut	3.65	3.60	3.55	3.70	3.68	3.70
Oil, Cottonseed	4.87	4.82	4.88	4.93	4.99	4.98
Oil, Olive	3.02	3.04	2.58	2.47	2.74	2.83
Oil, Palm	72.46	69.41	74.26	75.50	78.53	78.86
Oil, Palm Kernel	8.28	8.05	8.47	8.45	8.90	8.90
Oil, Peanut	6.44	6.34	6.22	6.07	6.19	6.19
Oil, Rapeseed	28.60	30.16	32.68	34.58	34.68	34.63
Oil, Soybean	58.91	59.76	58.79	61.18	64.69	64.73
Oil, Sunflowerseed	18.31	17.56	19.55	21.04	19.08	19.03
Total	204.55	202.74	210.96	217.92	223.47	223.86
Ending Stocks						
Oil, Coconut	0.79	0.91	0.85	0.87	0.74	0.74
Oil, Cottonseed	0.19	0.16	0.16	0.20	0.21	0.21
Oil, Olive	0.59	0.71	0.46	0.33	0.45	0.51
Oil, Palm	15.23	16.67	16.58	16.43	16.11	15.75
Oil, Palm Kernel	1.00	0.96	0.95	0.97	1.01	1.00
Oil, Peanut	0.30	0.34	0.38	0.26	0.29	0.29
Oil, Rapeseed	3.66	2.59	3.11	3.18	2.79	2.79
Oil, Soybean	5.91	5.10	5.03	5.10	5.20	4.97
Oil, Sunflowerseed	2.04	2.65	3.11	2.76	2.00	2.09
Total	29.71	30.09	30.62	30.10	28.80	28.33

Totals may not add due to rounding

Table 04: Major Oilseeds: World Supply and Distribution (Country View)

Million Metric Tons

	2020/21	2021/22	2022/23	2023/24	Oct 2024/25	Nov 2024/25
Production						
Brazil	144.89	135.18	166.92	158.80	175.73	175.73
United States	124.54	131.32	125.75	122.16	134.40	131.15
China	65.70	62.03	67.94	69.08	68.30	68.30
Argentina	51.25	49.88	31.45	54.24	56.99	56.99
India	39.18	43.17	42.31	41.39	43.32	43.11
Other	184.52	189.42	203.43	212.17	208.58	206.95
Total	610.08	611.00	637.80	657.85	687.32	682.22
Imports						
China	104.12	93.19	111.71	119.13	113.80	113.80
European Union	22.19	22.82	22.36	20.74	22.62	22.63
Mexico	7.82	7.20	8.13	7.93	8.23	8.23
Argentina	4.82	3.84	9.06	7.79	6.00	6.00
Japan	5.70	5.78	5.49	5.42	5.46	5.46
Turkey	3.73	3.68	4.02	3.69	4.13	4.13
Thailand	4.26	3.34	3.34	3.54	3.99	3.99
Egypt	3.68	4.61	2.00	3.21	3.64	3.64
Iran	2.83	1.89	2.90	2.65	3.32	3.32
Indonesia	3.00	2.80	2.72	3.07	3.28	3.18
Other	28.82	28.36	25.84	27.43	27.92	28.15
Total	190.96	177.50	197.57	204.59	202.37	202.51
Exports						
Brazil	82.02	79.45	95.92	104.57	105.47	105.97
United States	62.78	59.55	54.78	47.35	51.43	50.79
Canada	15.09	9.58	12.22	11.63	11.68	11.98
Ukraine	4.05	5.71	8.37	7.28	7.65	7.65
Paraguay	6.35	2.28	6.50	7.71	7.31	7.31
Argentina	6.37	3.99	5.12	6.24	5.63	5.63
Australia	4.03	6.66	6.70	6.10	5.45	5.45
Other	11.64	12.35	11.75	13.46	12.97	12.61
Total	192.33	179.57	201.37	204.35	207.59	207.39
Crush						
China	132.00	127.05	135.20	138.60	142.20	142.20
United States	62.66	63.87	64.16	66.32	70.26	69.83
Brazil	51.29	54.87	57.54	59.73	59.67	59.67
European Union	46.66	47.91	48.25	48.29	48.02	47.82
Argentina	43.67	42.79	34.59	40.69	43.91	44.01
India	32.39	32.20	34.78	35.63	35.58	35.58
Russia	18.75	21.20	24.50	25.55	25.80	25.80
Ukraine	15.40	12.50	15.68	18.55	14.45	14.45
Canada	12.07	10.40	11.73	12.69	13.75	13.75
Indonesia	13.02	12.51	13.26	12.98	13.64	13.64
Mexico	7.67	7.46	8.17	7.76	7.96	7.96
Malaysia	4.99	4.91	5.09	5.39	5.46	5.46
Turkey	5.25	5.34	6.03	5.06	5.39	5.19
Pakistan	5.48	5.60	3.85	5.02	4.72	4.97
Japan	4.68	4.79	4.63	4.47	4.54	4.48
Other	56.18	58.43	57.67	59.38	62.35	62.12
Total	512.13	511.81	525.12	546.10	557.70	556.94
Ending Stocks						
China	31.00	26.26	35.15	47.28	48.68	48.76
Brazil	29.65	27.50	37.03	28.16	34.32	33.82
Argentina	25.94	24.83	18.38	25.32	30.62	30.14
United States	8.64	9.14	8.85	10.80	16.35	14.22
Canada	2.12	1.81	2.29	3.36	3.79	3.41
Other	16.49	22.61	18.58	16.74	17.09	17.32
Total	113.85	112.16	120.27	131.67	150.85	147.67

Major Oilseeds includes Copra, Cottonseed, Palm Kernel, Peanut, Rapeseed, Soybeans and Sunflowerseeds.

Table 05: Major Protein Meals: World Supply and Distribution (Country View)

Million Metric Tons

	2020/21	2021/22	2022/23	2023/24	Oct 2024/25	Nov 2024/25
Production						
China	93.93	90.10	96.07	98.84	101.80	101.80
United States	48.22	49.23	49.94	51.49	54.23	53.93
Brazil	38.13	41.03	43.09	44.51	44.27	44.27
Argentina	32.86	32.03	25.56	30.36	32.95	33.00
European Union	30.19	30.75	30.74	30.82	30.83	30.72
Other	107.68	107.38	111.85	116.73	118.89	118.81
Total	351.01	350.52	357.24	372.75	382.97	382.53
Imports						
European Union	21.21	21.44	21.58	22.06	21.10	21.20
China	7.12	7.18	8.39	9.37	9.60	9.60
Vietnam	6.21	6.52	5.92	6.45	6.71	6.71
Indonesia	5.50	5.73	5.67	5.24	6.22	6.22
United States	4.39	3.57	4.31	4.28	4.28	4.35
Thailand	3.36	3.51	4.01	3.60	3.92	3.92
Korea, South	3.45	3.52	3.43	3.40	3.59	3.59
Other	41.58	42.71	39.90	46.91	46.21	46.25
Total	92.82	94.18	93.21	101.31	101.64	101.84
Exports						
Argentina	29.33	27.60	21.91	26.07	28.33	28.38
Brazil	16.58	20.21	21.33	22.73	20.50	20.50
United States	12.62	12.48	13.39	14.81	16.08	15.99
Canada	5.63	4.93	5.69	5.96	6.52	6.52
Indonesia	5.33	5.85	5.87	4.92	5.73	5.73
Ukraine	5.02	3.92	4.60	5.78	4.61	4.61
Russia	2.74	3.07	3.82	4.19	4.04	4.04
Other	20.20	18.50	21.04	22.11	20.40	20.31
Total	97.45	96.54	97.65	106.58	106.19	106.06
Domestic Consumption						
China	100.14	97.02	103.41	106.91	110.31	110.31
European Union	49.02	49.26	49.71	49.76	49.49	49.59
United States	39.98	40.36	40.79	40.88	42.39	42.29
Brazil	20.99	21.64	22.26	22.39	23.69	23.69
India	16.53	17.23	17.59	18.19	18.87	18.85
Russia	8.20	8.49	8.93	9.36	9.88	9.88
Mexico	7.61	7.61	7.84	7.95	8.22	8.22
Vietnam	7.45	7.55	7.25	7.70	8.20	8.20
Indonesia	6.44	6.38	6.62	7.04	7.30	7.09
Thailand	6.04	5.97	6.26	6.06	6.37	6.36
Other	84.99	86.25	84.90	89.74	92.10	92.40
Total	347.40	347.76	355.56	365.98	376.82	376.87
SME						
China	94.35	91.17	96.47	99.86	103.08	103.08
European Union	42.39	42.35	42.31	42.48	42.45	42.55
United States	38.55	39.19	39.36	39.43	40.91	40.82
Brazil	20.57	21.28	21.88	21.93	23.19	23.19
India	14.00	14.60	14.94	15.40	16.02	16.01
Russia	6.72	6.91	7.26	7.62	8.04	8.04
Mexico	7.32	7.38	7.55	7.69	7.97	7.97
Other	94.82	96.32	94.74	99.56	103.60	103.67
Total	318.72	319.21	324.50	333.98	345.27	345.34
Ending Stocks						
Argentina	2.51	3.04	2.61	2.74	2.67	3.13
Brazil	4.47	3.67	3.17	2.57	2.66	2.66
European Union	1.12	1.36	1.26	1.64	1.32	1.40
China	0.96	0.71	0.94	0.79	0.84	0.87
Ukraine	0.50	0.36	0.57	0.98	0.79	0.79
Other	10.19	11.00	8.84	10.16	11.72	11.47
Total	19.75	20.13	17.38	18.89	20.00	20.32

Major Protein Meals include Copra, Cottonseed, Fish, Palm Kernel, Peanut, Rapeseed, Soybean, and Sunflower Meal.

Table 06: Major Vegetable Oils: World Supply and Distribution (Country View)

Million Metric Tons

	2020/21	2021/22	2022/23	2023/24	Oct 2024/25	Nov 2024/25
Production						
Indonesia	49.50	47.78	51.10	49.99	52.77	52.77
China	28.35	27.56	29.30	30.19	30.76	30.76
Malaysia	19.98	20.22	20.59	22.03	22.14	22.14
European Union	17.94	18.80	18.33	18.45	18.47	18.51
United States	12.69	13.05	13.18	13.63	14.29	14.21
Brazil	10.72	11.50	11.94	12.46	12.46	12.46
Argentina	9.40	9.35	7.84	9.00	9.60	9.64
Other	59.45	60.33	64.50	67.01	66.63	66.53
Total	208.03	208.58	216.78	222.76	227.12	227.02
Imports						
India	13.81	14.31	17.12	15.64	15.45	15.50
China	13.25	7.13	11.40	9.14	10.43	10.45
European Union	9.93	9.82	9.15	9.20	8.37	8.38
United States	4.95	5.26	6.27	6.86	7.18	7.22
Pakistan	3.59	3.08	3.92	3.19	3.52	3.52
Turkey	1.71	2.42	2.75	2.49	2.21	2.31
Bangladesh	1.96	2.03	2.29	2.25	2.25	2.25
Egypt	1.75	1.71	1.65	1.81	1.90	1.90
Iran	1.89	1.51	1.45	1.36	1.64	1.64
Korea, South	1.24	1.20	1.20	1.32	1.23	1.24
Other	27.12	25.75	26.37	27.46	27.24	27.33
Total	81.19	74.23	83.57	80.72	81.42	81.74
Exports						
Indonesia	29.45	24.27	30.25	24.46	27.45	27.45
Malaysia	17.32	16.82	16.64	17.86	17.56	17.56
Argentina	7.05	5.85	5.33	6.59	6.45	6.60
Russia	4.56	4.79	6.06	6.45	6.21	6.21
Ukraine	5.61	4.87	5.99	7.04	5.34	5.34
Canada	3.58	2.74	3.17	3.57	4.26	4.26
European Union	3.57	3.28	3.65	3.22	3.07	3.04
Other	14.65	17.09	17.77	16.90	16.22	16.21
Total	85.79	79.69	88.86	86.08	86.55	86.67
Domestic Consumption						
China	40.26	37.15	39.17	39.90	41.11	41.12
Indonesia	19.50	21.43	23.23	25.47	25.75	25.90
India	22.53	22.82	23.86	24.75	25.47	25.62
European Union	25.57	24.48	24.40	24.20	24.02	24.05
United States	16.51	17.27	19.27	20.19	20.96	20.95
Brazil	10.17	9.60	10.22	11.41	11.64	11.65
Malaysia	4.72	4.65	5.40	5.34	5.52	5.52
Pakistan	4.80	4.62	4.85	4.41	4.58	4.61
Russia	3.62	3.70	3.78	3.85	3.94	3.95
Bangladesh	3.13	3.11	3.13	3.19	3.22	3.30
Thailand	3.13	2.97	3.08	3.11	3.27	3.22
Mexico	2.94	3.05	3.11	3.09	3.17	3.18
Argentina	2.67	3.29	2.75	2.42	3.07	3.07
Nigeria	2.46	2.56	2.65	2.76	2.88	2.88
Turkey	2.42	2.51	2.66	2.69	2.74	2.72
Other	40.12	39.53	39.40	41.13	42.15	42.14
Total	204.55	202.74	210.96	217.92	223.47	223.86
Ending Stocks						
Indonesia	5.76	7.96	5.64	5.83	5.53	5.38
India	1.90	2.02	4.37	4.44	3.56	3.73
Malaysia	2.09	2.82	2.87	2.53	2.56	2.56
European Union	1.92	2.78	2.21	2.44	2.16	2.24
China	4.27	1.65	3.01	2.28	2.54	2.21
Other	13.78	12.86	12.51	12.57	12.46	12.22
Total	29.71	30.09	30.62	30.10	28.80	28.33

Major Vegetable Oils includes Coconut, Cottonseed, Olive, Palm, Palm Kernel, Peanut, Rapeseed, Soybean, and Sunflowerseed oil.

Table 07: Soybeans: World Supply and Distribution

Thousand Metric Tons

	2020/21	2021/22	2022/23	2023/24	Oct 2024/25	Nov 2024/25
Production						
Brazil	139,500	130,500	162,000	153,000	169,000	169,000
United States	114,749	121,504	116,221	113,273	124,701	121,417
Argentina	46,200	43,900	25,000	48,210	51,000	51,000
China	19,602	16,395	20,284	20,840	20,700	20,700
India	10,456	11,889	12,411	11,875	12,800	12,582
Paraguay	9,642	4,183	10,250	11,000	11,200	11,200
Russia	4,307	4,760	5,996	6,800	7,300	7,300
Other	24,817	27,250	26,438	29,731	32,217	32,203
Total	369,273	360,381	378,600	394,729	428,918	425,402
Imports						
China	99,740	90,297	104,500	112,000	109,000	109,000
European Union	14,786	14,544	13,143	13,600	14,600	14,600
Mexico	6,101	5,956	6,442	6,400	6,700	6,700
Argentina	4,816	3,839	9,059	7,787	6,000	6,000
Thailand	4,157	3,243	3,238	3,428	3,875	3,875
Egypt	3,607	4,566	1,992	3,200	3,600	3,600
Turkey	2,745	2,949	2,888	3,252	3,500	3,500
Japan	3,085	3,455	3,332	3,099	3,350	3,350
Iran	2,777	1,817	2,803	2,554	3,250	3,250
Taiwan	2,615	2,622	2,559	2,625	2,850	2,850
Other	21,770	21,180	17,929	19,955	20,887	21,187
Total	166,199	154,468	167,885	177,900	177,612	177,912
Exports						
Brazil	81,650	79,063	95,504	104,174	105,000	105,500
United States	61,664	58,570	53,874	46,128	50,349	49,668
Paraguay	6,330	2,273	6,495	7,700	7,300	7,300
Canada	4,554	4,289	4,240	4,846	4,300	4,600
Argentina	5,195	2,861	4,185	5,114	4,500	4,500
Other	5,783	7,379	7,455	9,075	10,082	10,142
Total	165,176	154,435	171,753	177,037	181,531	181,710
Crush						
China	95,000	90,000	96,000	99,000	103,000	103,000
United States	58,257	59,980	60,199	62,244	65,998	65,589
Brazil	46,675	50,767	53,409	54,700	54,000	54,000
Argentina	40,162	38,825	30,318	36,550	40,000	40,000
European Union	15,800	15,400	14,300	14,500	15,200	15,200
India	10,000	8,500	10,300	11,300	11,000	11,000
Mexico	6,200	6,350	6,650	6,480	6,650	6,650
Russia	4,500	4,900	5,400	5,900	6,100	6,100
Egypt	3,700	4,500	2,200	3,125	3,500	3,500
Paraguay	3,325	2,200	3,450	3,400	3,500	3,500
Iran	2,400	2,500	3,000	2,700	3,350	3,350
Bolivia	3,050	3,100	3,500	2,800	3,000	3,000
Japan	2,300	2,640	2,600	2,345	2,560	2,540
Thailand	2,800	2,500	2,100	2,400	2,500	2,500
Taiwan	2,050	2,075	1,950	2,020	2,155	2,155
Other	21,936	22,390	19,914	21,663	23,866	24,061
Total	318,155	316,627	315,290	331,127	346,379	346,145
Ending Stocks						
China	28,856	25,146	32,340	43,310	46,010	46,010
Brazil	29,419	27,378	36,819	27,962	34,012	33,512
Argentina	24,838	23,691	16,997	24,080	29,347	28,980
United States	6,994	7,468	7,190	9,308	14,965	12,797
European Union	1,455	1,446	1,098	1,275	1,546	1,505
Other	6,785	7,506	6,563	6,480	8,765	8,940
Total	98,347	92,635	101,007	112,415	134,645	131,744

Most countries are on an October/September Marketing Year (MY). The United States, Mexico, and Thailand are on a September/August MY. Canada is on an August/July MY. Paraguay is on a Jan/Dec MY.

Table 08: Soybean Meal: World Supply and Distribution

Thousand Metric Tons

	2020/21	2021/22	2022/23	2023/24	Oct 2024/25	Nov 2024/25
Production						
China	75,240	71,280	76,032	78,408	81,576	81,576
United States	45,872	47,005	47,621	49,120	51,778	51,480
Brazil	35,940	39,091	41,125	42,119	41,580	41,580
Argentina	31,318	30,287	23,648	28,509	31,200	31,200
European Union	12,482	12,166	11,297	11,455	12,008	12,008
India	8,000	6,800	8,240	9,040	8,800	8,800
Mexico	4,900	5,020	5,255	5,120	5,255	5,255
Other	35,999	36,508	34,437	36,230	39,453	39,589
Total	249,751	248,157	247,655	260,001	271,650	271,488
Imports						
European Union	16,504	16,536	16,012	16,500	16,200	16,200
Indonesia	5,356	5,535	5,434	5,055	6,000	6,000
Vietnam	5,200	5,531	4,800	5,400	5,700	5,700
Philippines	2,839	2,895	2,826	3,025	3,150	3,150
Thailand	2,687	3,077	3,141	2,770	3,150	3,150
Mexico	1,854	1,827	1,668	2,075	2,200	2,200
United Kingdom	2,214	2,015	1,762	2,000	2,150	2,150
Ecuador	1,597	1,775	1,771	2,000	2,075	2,075
Colombia	1,607	1,831	1,603	1,900	2,000	2,000
Japan	1,839	1,699	1,540	1,822	1,750	1,800
Other	23,625	24,405	22,798	27,243	26,817	26,835
Total	65,322	67,126	63,355	69,790	71,192	71,260
Exports						
Argentina	28,325	26,589	20,751	24,889	27,300	27,300
Brazil	16,577	20,207	21,334	22,733	20,500	20,500
United States	12,406	12,303	13,196	14,612	15,876	15,785
Paraguay	1,916	1,270	1,992	2,000	2,000	2,000
Bolivia	2,117	2,153	2,151	1,900	1,900	1,900
Other	8,096	6,298	7,643	8,568	7,185	7,185
Total	69,437	68,820	67,067	74,702	74,761	74,670
Domestic Consumption						
China	74,425	71,100	75,050	77,150	80,550	80,550
United States	34,179	35,323	34,946	35,056	36,401	36,310
European Union	28,342	27,742	26,742	26,942	27,342	27,442
Brazil	18,800	19,700	20,300	20,000	21,000	21,000
India	5,850	6,273	6,625	7,150	7,525	7,550
Mexico	6,725	6,875	6,930	7,150	7,425	7,425
Vietnam	6,130	6,235	5,785	6,290	6,845	6,845
Indonesia	5,200	5,550	5,580	5,200	5,950	5,740
Thailand	4,745	4,900	4,750	4,575	4,895	4,895
Iran	3,750	3,500	3,550	4,810	4,500	4,540
Russia	3,475	3,500	3,650	3,900	4,100	4,100
Japan	3,615	3,610	3,550	3,580	3,685	3,690
Argentina	3,275	3,325	3,450	3,450	3,525	3,525
Egypt	3,500	3,700	2,700	2,950	3,400	3,400
Philippines	2,875	2,950	2,950	3,050	3,200	3,200
Other	40,884	41,688	40,448	42,824	45,749	45,972
Total	245,770	245,971	247,006	254,077	266,092	266,184
Ending Stocks						
Argentina	2,289	2,797	2,311	2,482	2,402	2,867
Brazil	4,460	3,656	3,153	2,557	2,647	2,647
China	958	710	937	794	841	870
European Union	462	658	485	798	664	664
Ukraine	251	228	326	402	507	507
Other	7,534	8,397	6,171	7,362	8,994	8,734
Total	15,954	16,446	13,383	14,395	16,055	16,289

Most countries are on an October/September Marketing Year (MY). The Mexico and Thailand are on a September/August MY. Canada is on an August/July MY. Paraguay, Vietnam and the Philippines are on a January/December MY and Bolivia is on a March/February MY.

Table 09: Soybean Oil: World Supply and Distribution

Thousand Metric Tons

	2020/21	2021/22	2022/23	2023/24	Oct 2024/25	Nov 2024/25
Production						
China	17,024	16,128	17,203	17,741	18,458	18,458
United States	11,350	11,864	11,897	12,306	12,934	12,853
Brazil	9,335	10,153	10,580	10,940	10,800	10,800
Argentina	7,932	7,664	5,991	7,244	7,936	7,928
European Union	3,002	2,926	2,717	2,755	2,888	2,888
India	1,800	1,530	1,854	2,034	1,980	1,980
Mexico	1,145	1,171	1,227	1,196	1,227	1,227
Other	8,476	8,611	8,144	8,563	9,319	9,352
Total	60,064	60,047	59,613	62,779	65,542	65,486
Imports						
India	3,251	4,231	3,968	3,200	3,500	3,600
Bangladesh	676	689	681	575	650	650
Peru	594	471	535	575	590	590
Morocco	507	529	514	500	560	560
European Union	493	459	623	575	525	525
Algeria	610	460	490	500	450	450
China	1,221	291	395	381	400	400
Iran	473	375	395	22	375	375
Korea, South	407	392	353	447	350	350
Colombia	285	317	242	350	345	345
Other	3,175	3,127	2,618	3,220	3,342	3,365
Total	11,692	11,341	10,814	10,345	11,087	11,210
Exports						
Argentina	6,137	4,873	4,137	5,533	5,500	5,600
Brazil	1,262	2,409	2,686	1,352	1,400	1,400
European Union	1,065	970	922	650	950	950
Russia	561	665	750	760	750	750
Paraguay	562	371	523	620	580	580
Bolivia	525	523	620	430	480	480
Ukraine	232	235	277	345	350	350
Other	2,264	2,391	1,797	2,177	1,986	1,986
Total	12,608	12,437	11,712	11,867	11,996	12,096
Domestic Consumption						
China	17,800	17,100	17,000	18,150	18,800	18,800
United States	10,574	11,262	12,070	12,356	12,791	12,792
Brazil	8,150	7,725	8,375	9,350	9,525	9,525
India	4,950	5,825	5,400	5,275	5,725	5,775
European Union	2,430	2,305	2,405	2,580	2,480	2,530
Argentina	2,045	2,650	2,060	1,710	2,360	2,360
Mexico	1,290	1,300	1,305	1,280	1,335	1,335
Bangladesh	1,205	1,100	985	935	1,015	1,020
Iran	850	850	900	725	965	900
Algeria	800	750	750	750	780	780
Egypt	1,010	960	560	480	740	710
Korea, South	600	600	565	600	585	585
Peru	535	555	540	540	575	575
Morocco	510	525	520	500	540	540
Japan	458	533	525	457	505	501
Other	5,704	5,721	4,825	5,490	5,971	6,006
Total	58,911	59,761	58,785	61,178	64,692	64,734
Ending Stocks						
Brazil	894	945	493	811	726	726
China	1,180	387	874	742	748	700
United States	967	903	729	681	811	697
European Union	440	550	563	663	596	596
India	265	186	597	541	281	331
Other	2,159	2,124	1,769	1,666	2,042	1,920
Total	5,905	5,095	5,025	5,104	5,204	4,970

Most countries are on an October/September Marketing Year (MY). Mexico is on a September/August MY. Paraguay and Peru are on an January/December MY and Bolivia is on a March/February MY.

Table 10: Soybeans and Products: World Trade
Thousand Metric Tons

Marketing Year	Meal, Soybean			Oil, Soybean			Oilseed, Soybean			
	2022/23	2023/24	2024/25	2022/23	2023/24	2024/25	2022/23	2023/24	2024/25	
Exports										
North America	13,576	14,940	16,001	346	517	462	58,115	50,982	54,270	
South America	46,240	51,529	51,707	8,034	8,001	8,110	107,435	119,943	120,255	
South Asia	1,897	1,903	1,301	11	15	30	22	25	25	
India (Oct-Sep)	1,871	1,900	1,300	11	15	15	22	25	25	
Other	5,354	6,330	5,661	3,321	3,334	3,494	6,181	6,087	7,160	
World Total	67,067	74,702	74,670	11,712	11,867	12,096	171,753	177,037	181,710	
Imports										
European Union (Oct-Sep)	16,012	16,500	16,200	623	575	525	13,143	13,600	14,600	
East Asia	3,115	3,602	3,630	855	945	895	111,733	118,847	116,630	
China (Oct-Sep)	40	31	50	395	381	400	104,500	112,000	109,000	
Japan (Oct-Sep)	1,540	1,822	1,800	7	2	10	3,332	3,099	3,350	
Korea, South (Oct-Sep)	1,492	1,664	1,695	353	447	350	1,337	1,118	1,425	
Taiwan (Oct-Sep)	43	85	85	0	0	0	2,559	2,625	2,850	
Southeast Asia	18,229	18,019	20,200	267	249	255	8,285	9,065	9,927	
Indonesia (Oct-Sep)	5,434	5,055	6,000	31	34	40	2,308	2,567	2,650	
Malaysia (Oct-Sep)	1,346	1,325	1,425	88	90	90	684	750	750	
Philippines (Jan-Dec)	2,826	3,025	3,150	60	60	60	160	190	210	
Thailand (Sep-Aug)	3,141	2,770	3,150	0	0	0	3,238	3,428	3,875	
Vietnam (Jan-Dec)	4,800	5,400	5,700	75	50	50	1,858	2,100	2,400	
North America	3,450	4,045	4,262	414	980	642	7,609	7,302	7,458	
Canada (Aug-Jul)	1,207	1,347	1,450	147	573	240	500	335	350	
United States (Oct-Sep)	575	623	612	170	282	227	667	567	408	
Canada (Aug-Jul)	1,207	1,347	1,450	147	573	240	500	335	350	
Mexico (Sep-Aug)	1,668	2,075	2,200	97	125	175	6,442	6,400	6,700	
South America	6,793	7,619	7,920	1,202	1,471	1,463	10,095	9,759	7,325	
Argentina (Oct-Sep)	67	1	10	0	2	0	9,059	7,787	6,000	
Brazil (Oct-Sep)	6	18	10	29	80	40	154	867	150	
Paraguay (Jan-Dec)	5	0	0	1	2	1	10	20	20	
Brazil (Oct-Sep)	6	18	10	29	80	40	154	867	150	
Colombia (Oct-Sep)	1,603	1,900	2,000	242	350	345	444	575	640	
Central America	1,608	1,855	1,860	166	218	250	313	332	377	
Caribbean	742	811	840	192	241	266	31	58	55	
Middle East	5,317	8,451	7,085	512	149	546	6,693	6,867	8,081	
Iran (Oct-Sep)	1,185	3,003	1,775	395	22	375	2,803	2,554	3,250	
Israel (Oct-Sep)	308	325	350	10	20	20	297	330	360	
Syria (Jan-Dec)	69	150	90	1	1	1	1	1	1	
Turkey (Oct-Sep)	1,400	1,625	1,650	2	0	0	2,888	3,252	3,500	
North Africa	2,425	2,020	2,035	1,238	1,061	1,250	3,957	5,350	6,100	
Egypt (Oct-Sep)	892	500	750	198	35	150	1,992	3,200	3,600	
Other Europe	2,254	2,495	2,712	170	189	211	1,438	1,422	1,557	
United Kingdom (Oct-Sep)	1,762	2,000	2,150	159	175	200	910	925	950	
Other	3,410	4,373	4,516	5,175	4,267	4,907	4,588	5,298	5,802	
World Total	63,355	69,790	71,260	10,814	10,345	11,210	167,885	177,900	177,912	

Table 11: Palm Oil: World Supply and Distribution

Thousand Metric Tons

	2020/21	2021/22	2022/23	2023/24	Oct 2024/25	Nov 2024/25
Production						
Indonesia	43,500	42,000	45,000	44,000	46,500	46,500
Malaysia	17,854	18,152	18,389	19,710	19,800	19,800
Thailand	2,963	3,376	3,328	3,600	3,700	3,700
Colombia	1,628	1,762	1,800	1,900	1,950	1,950
Nigeria	1,275	1,400	1,400	1,500	1,500	1,500
Other	6,144	6,465	6,645	6,574	6,729	6,729
Total	73,364	73,155	76,562	77,284	80,179	80,179
Imports						
India	8,411	8,004	10,045	8,800	9,900	9,900
China	6,818	4,387	6,190	4,377	5,900	5,900
European Union	5,951	5,015	4,548	3,800	4,000	4,000
Pakistan	3,500	2,824	3,685	3,100	3,300	3,300
United States	1,576	1,588	1,888	1,877	1,900	1,900
Bangladesh	1,285	1,339	1,610	1,676	1,600	1,600
Egypt	1,127	1,154	1,052	1,175	1,200	1,200
Vietnam	933	995	1,050	1,100	1,100	1,100
Kenya	839	789	848	1,000	1,075	1,075
Philippines	1,192	1,177	892	1,100	1,000	1,000
Other	15,230	14,323	15,316	15,029	15,017	15,007
Total	46,862	41,595	47,124	43,034	45,992	45,982
Exports						
Indonesia	27,321	22,321	28,077	22,273	25,200	25,200
Malaysia	15,878	15,527	15,355	16,530	16,300	16,300
Thailand	624	971	902	1,000	1,000	1,000
Guatemala	776	792	883	750	945	945
Papua New Guinea	745	834	813	800	820	820
Other	3,212	3,456	3,491	3,608	3,719	3,719
Total	48,556	43,901	49,521	44,961	47,984	47,984
Domestic Consumption						
Indonesia	15,700	17,425	19,125	21,500	21,610	21,760
India	9,225	8,150	8,900	8,875	10,300	10,450
China	6,550	5,100	5,600	4,950	5,700	5,800
European Union	6,360	4,850	4,400	3,830	3,850	3,850
Malaysia	3,242	3,300	3,975	3,828	3,845	3,845
Pakistan	3,470	3,145	3,595	3,120	3,315	3,315
Thailand	2,485	2,335	2,585	2,590	2,685	2,635
Nigeria	1,650	1,715	1,790	1,865	1,950	1,950
United States	1,598	1,561	1,876	1,907	1,890	1,847
Bangladesh	1,430	1,470	1,600	1,575	1,545	1,570
Colombia	1,220	1,380	1,487	1,545	1,565	1,565
Egypt	1,175	1,175	1,060	1,160	1,170	1,170
Philippines	1,255	1,270	1,020	1,110	1,110	1,110
Vietnam	950	927	947	1,007	1,025	1,025
Mexico	725	760	820	860	880	880
Other	15,427	14,847	15,476	15,780	16,086	16,086
Total	72,462	69,410	74,256	75,502	78,526	78,858
Ending Stocks						
Indonesia	5,055	7,309	5,107	5,335	5,023	4,875
India	843	972	2,419	2,645	2,272	2,397
Malaysia	1,756	2,318	2,312	2,014	2,069	2,069
Colombia	734	836	826	806	666	666
Thailand	494	566	409	421	438	488
Other	6,346	4,666	5,503	5,210	5,645	5,255
Total	15,228	16,667	16,576	16,431	16,113	15,750

Table 12: Rapeseed and Products: World Supply and Distribution
Thousand Metric Tons

Marketing Year	Meal, Rapeseed			Oil, Rapeseed			Oilseed, Rapeseed			
	2022/23	2023/24	2024/25	2022/23	2023/24	2024/25	2022/23	2023/24	2024/25	
Production										
China	(Oct-Sep)	10,917	11,684	11,507	7,215	7,722	7,605	15,531	16,321	15,800
India	(Oct-Sep)	6,015	6,219	6,368	3,840	3,975	4,070	11,200	11,600	12,100
Canada	(Aug-Jul)	5,810	6,408	6,908	4,151	4,706	5,092	18,850	19,192	20,000
Japan	(Oct-Sep)	1,146	1,203	1,089	853	896	822	4	4	4
European Union	(Jul-Jun)	13,794	13,908	13,509	10,164	10,248	9,955	19,612	19,934	17,350
Other		9,537	9,957	9,722	6,634	6,956	6,743	23,707	22,834	21,986
World Total		47,219	49,379	49,103	32,857	34,503	34,287	88,904	89,885	87,240
Imports										
China	(Oct-Sep)	2,030	2,842	3,000	1,998	2,040	1,900	5,335	5,486	3,400
India	(Oct-Sep)	2	15	2	6	5	5	0	0	0
Canada	(Aug-Jul)	6	3	10	26	19	20	151	276	100
Japan	(Oct-Sep)	20	5	10	13	8	15	1,976	2,117	1,900
European Union	(Jul-Jun)	843	814	1,000	402	463	450	6,841	5,457	6,700
Other		6,388	6,237	6,429	4,448	5,030	5,339	5,742	5,062	4,704
World Total		9,289	9,916	10,451	6,893	7,565	7,729	20,045	18,398	16,804
Exports										
China	(Oct-Sep)	24	7	10	4	21	5	0	0	0
India	(Oct-Sep)	1,920	1,650	1,500	11	10	10	0	0	0
Canada	(Aug-Jul)	5,308	5,636	6,300	3,018	3,419	4,100	7,951	6,747	7,350
Japan	(Oct-Sep)	0	0	0	5	4	5	0	0	0
European Union	(Jul-Jun)	795	869	650	671	745	600	549	534	300
Other		1,730	2,031	2,055	2,840	3,214	3,060	11,053	10,731	9,493
World Total		9,777	10,193	10,515	6,549	7,413	7,780	19,553	18,012	17,143
Domestic Consumption										
China	(Oct-Sep)	12,923	14,519	14,497	8,900	9,750	9,600	19,125	20,700	20,400
India	(Oct-Sep)	4,350	4,515	4,860	3,680	3,980	4,080	11,300	11,650	12,025
Canada	(Aug-Jul)	525	740	605	1,055	1,250	1,230	10,673	11,831	12,792
Japan	(Oct-Sep)	1,168	1,205	1,100	890	890	845	2,005	2,105	1,915
European Union	(Jul-Jun)	13,800	13,900	13,850	9,925	9,950	9,800	24,850	25,050	24,300
Other		14,204	14,066	14,155	8,227	8,763	9,079	17,232	17,788	17,524
World Total		46,970	48,945	49,067	32,677	34,583	34,634	85,185	89,124	88,956
Ending Stocks										
China	(Oct-Sep)	0	0	0	1,150	1,141	1,041	2,609	3,716	2,516
India	(Oct-Sep)	197	266	276	402	392	377	619	569	644
Canada	(Aug-Jul)	134	169	182	629	685	467	1,858	2,748	2,706
Japan	(Oct-Sep)	16	19	18	17	27	14	182	198	187
European Union	(Jul-Jun)	429	382	391	343	359	364	1,821	1,628	1,078
Other		476	573	514	570	579	522	1,872	1,249	922
World Total		1,252	1,409	1,381	3,111	3,183	2,785	8,961	10,108	8,053

Table 13: Sunflowerseed and Products: World Supply and Distribution
Thousand Metric Tons

Marketing Year	Oilseed, Sunflowerseed			Meal, Sunflowerseed			Oil, Sunflowerseed			
	2022/23	2023/24	2024/25	2022/23	2023/24	2024/25	2022/23	2023/24	2024/25	
Production										
Argentina	(Mar-Feb)	5,019	3,895	4,000	1,789	1,660	1,605	1,752	1,623	1,570
Russia	(Sep-Aug)	16,254	17,100	16,000	6,453	6,780	6,451	6,484	6,815	6,484
Turkey	(Sep-Aug)	1,900	1,550	1,375	1,334	872	818	1,066	696	653
Ukraine	(Sep-Aug)	12,200	15,500	12,500	5,782	6,484	5,018	6,020	6,751	5,226
European Union	(Oct-Sep)	9,386	10,125	9,430	5,135	4,973	4,702	4,014	3,887	3,676
Other		8,021	7,861	7,139	2,573	2,509	2,449	2,386	2,358	2,306
World Total		52,780	56,031	50,444	23,066	23,278	21,043	21,722	22,130	19,915
Imports										
Argentina	(Mar-Feb)	1	1	0	0	0	0	0	0	0
Russia	(Sep-Aug)	75	50	50	5	5	5	1	1	1
Turkey	(Sep-Aug)	941	310	450	879	1,312	950	1,711	1,491	1,250
Ukraine	(Sep-Aug)	31	20	30	13	13	10	1	1	0
European Union	(Oct-Sep)	1,460	800	410	2,756	3,100	2,400	2,103	2,800	2,000
Other		1,264	1,359	1,231	4,887	5,531	4,763	8,744	9,308	7,228
World Total		3,772	2,540	2,171	8,540	9,961	8,128	12,560	13,601	10,479
Exports										
Argentina	(Mar-Feb)	94	150	150	1,128	1,150	1,050	1,115	950	900
Russia	(Sep-Aug)	260	450	350	2,250	2,650	2,150	4,000	4,400	3,950
Turkey	(Sep-Aug)	102	102	125	78	45	20	1,102	1,189	600
Ukraine	(Sep-Aug)	1,856	314	230	3,973	4,653	3,925	5,624	6,264	4,825
European Union	(Oct-Sep)	595	450	350	1,001	950	800	1,221	1,000	650
Other		1,110	1,416	1,093	725	750	726	1,213	1,239	1,106
World Total		4,017	2,882	2,298	9,155	10,198	8,671	14,275	15,042	12,031
Domestic Consumption										
Argentina	(Mar-Feb)	4,553	4,055	3,950	600	550	550	652	672	672
Russia	(Sep-Aug)	16,180	16,980	16,020	3,900	4,125	4,350	2,425	2,525	2,575
Turkey	(Sep-Aug)	2,672	1,802	1,702	2,025	2,175	1,770	1,290	1,465	1,290
Ukraine	(Sep-Aug)	14,175	15,875	12,325	1,700	1,525	1,400	415	440	455
European Union	(Oct-Sep)	10,535	10,235	9,735	6,860	7,010	6,410	5,213	5,413	5,313
Other		8,120	7,726	7,467	6,720	7,263	6,524	9,550	10,523	8,726
World Total		56,235	56,673	51,199	21,805	22,648	21,004	19,545	21,038	19,031
Ending Stocks										
Argentina	(Mar-Feb)	1,084	775	675	292	252	257	329	330	328
Russia	(Sep-Aug)	907	627	307	397	407	363	346	237	197
Turkey	(Sep-Aug)	168	124	122	223	187	165	611	144	157
Ukraine	(Sep-Aug)	845	176	151	247	566	269	76	124	70
European Union	(Oct-Sep)	407	647	402	320	433	325	328	602	315
Other		736	814	624	242	269	231	1,417	1,321	1,023
World Total		4,147	3,163	2,281	1,721	2,114	1,610	3,107	2,758	2,090

Table 14: Minor Vegetable Oils: World Supply and Distribution
Thousand Metric Tons

Marketing Year	Oil, Peanut			Oil, Cottonseed			Oil, Olive			
	2022/23	2023/24	2024/25	2022/23	2023/24	2024/25	2022/23	2023/24	2024/25	
Production										
China	(Oct-Sep)	3,136	3,136	3,104	1,484	1,368	1,368	8	8	8
India	(Oct-Sep)	1,221	1,123	1,256	1,369	1,355	1,297	nr	nr	nr
Turkey	(Nov-Oct)	7	7	7	290	193	238	380	190	350
United States	(Aug-Jul)	120	96	120	166	163	170	9	12	10
European Union	(Oct-Sep)	13	13	13	33	24	29	1,392	1,525	1,950
Other		1,722	1,683	1,751	1,548	1,865	1,915	654	682	752
World Total		6,219	6,058	6,251	4,890	4,968	5,017	2,443	2,417	3,070
Imports										
China	(Oct-Sep)	292	247	250	0	0	0	35	30	45
India	(Oct-Sep)	0	0	0	1	3	5	nr	nr	nr
Turkey	(Nov-Oct)	0	0	0	1	2	2	65	55	40
United States	(Aug-Jul)	28	17	27	7	1	2	371	386	410
European Union	(Oct-Sep)	44	52	55	2	10	5	193	250	200
Other		28	31	29	72	65	58	423	361	470
World Total		392	347	361	83	81	72	1,087	1,082	1,165
Exports										
China	(Oct-Sep)	10	10	10	7	6	5	0	0	0
India	(Oct-Sep)	125	185	100	0	0	0	nr	nr	nr
Turkey	(Nov-Oct)	0	0	0	8	5	5	187	140	180
United States	(Aug-Jul)	6	6	7	32	10	23	6	10	10
European Union	(Oct-Sep)	6	6	6	1	1	1	659	650	675
Other		199	252	270	50	55	63	356	364	359
World Total		346	459	393	98	77	97	1,208	1,164	1,224
Domestic Consumption										
China	(Oct-Sep)	3,418	3,373	3,344	1,477	1,362	1,363	43	38	53
India	(Oct-Sep)	1,060	1,015	1,125	1,361	1,345	1,320	nr	nr	nr
Turkey	(Nov-Oct)	7	7	7	280	190	230	190	160	195
United States	(Aug-Jul)	141	115	137	141	154	149	374	388	410
European Union	(Oct-Sep)	53	57	62	34	33	33	1,165	1,140	1,340
Other		1,545	1,498	1,515	1,589	1,848	1,885	803	745	832
World Total		6,224	6,065	6,190	4,882	4,932	4,980	2,575	2,471	2,830
Ending Stocks										
China	(Oct-Sep)	0	0	0	0	0	0	0	0	0
India	(Oct-Sep)	264	187	218	37	50	32	nr	nr	nr
Turkey	(Nov-Oct)	0	0	0	16	16	21	81	26	41
United States	(Aug-Jul)	16	8	11	23	23	23	0	0	0
European Union	(Oct-Sep)	3	5	5	0	0	0	210	195	330
Other		95	59	54	79	106	131	170	104	135
World Total		378	259	288	155	195	207	461	325	506

Table 15: World Oilseeds and Products Supply and Distribution

Million Metric Tons

	Area Harvested	Beginning Stocks	Production	Imports	Total Supply	Exports	Food Use Dom.	Domestic Consumpti	Ending Stocks
Major Oilseeds									
2011/12	249.06	89.03	447.09	113.33	649.44	111.07	36.08	466.08	72.28
2012/13	257.78	72.28	475.36	114.72	662.37	118.26	36.50	471.97	72.15
2013/14	261.63	72.15	503.77	133.89	709.80	133.97	37.35	494.72	81.11
2014/15	268.04	81.11	539.98	143.67	764.76	147.52	38.85	521.31	95.93
2015/16	265.73	95.93	524.67	154.46	775.06	153.93	40.16	527.58	93.55
2016/17	270.49	93.63	576.84	167.65	838.12	171.61	41.58	555.87	110.65
2017/18	281.70	110.65	583.54	176.53	870.71	177.49	43.04	574.70	118.52
2018/19	282.71	118.52	601.14	168.04	887.70	172.08	43.78	581.64	133.99
2019/20	281.05	133.99	581.97	189.86	905.81	191.67	45.37	602.00	112.14
2020/21	288.32	112.14	610.08	190.96	913.18	192.33	46.76	606.99	113.85
2021/22	296.54	113.85	611.00	177.50	902.35	179.57	47.87	610.62	112.16
2022/23	304.40	112.16	637.80	197.57	947.52	201.37	49.19	625.88	120.27
2023/24	308.32	120.27	657.85	204.59	982.71	204.35	50.33	646.69	131.67
2024/25	313.18	131.67	682.22	202.51	1,016.40	207.39	51.48	661.33	147.67
Major Protein Meals									
2011/12	nr	13.13	267.42	79.41	359.96	81.13	0.40	263.88	14.94
2012/13	nr	14.94	269.36	75.26	359.56	79.48	0.43	266.47	13.61
2013/14	nr	13.61	282.52	80.97	377.09	83.54	0.44	278.35	15.21
2014/15	nr	15.21	300.67	82.94	398.82	86.61	0.45	293.85	18.36
2015/16	nr	18.36	305.85	84.15	408.36	87.39	0.47	302.66	18.30
2016/17	nr	18.65	320.64	85.55	424.85	89.73	0.52	315.91	19.21
2017/18	nr	19.21	331.28	87.35	437.85	90.99	0.54	325.99	20.87
2018/19	nr	20.87	333.05	90.29	444.20	95.29	0.61	329.19	19.72
2019/20	nr	19.72	346.38	91.77	457.86	96.06	0.70	341.03	20.77
2020/21	nr	20.77	351.01	92.82	464.60	97.45	0.77	347.40	19.75
2021/22	nr	19.75	350.52	94.18	464.44	96.54	0.81	347.76	20.13
2022/23	nr	20.13	357.24	93.21	470.59	97.65	0.81	355.56	17.38
2023/24	nr	17.38	372.75	101.31	491.44	106.58	0.87	365.98	18.89
2024/25	nr	18.89	382.53	101.84	503.26	106.06	0.90	376.87	20.32
Major Vegetable Oils									
2011/12	18.52	20.15	157.86	61.32	239.32	64.73	115.41	151.12	23.48
2012/13	19.23	23.48	161.23	64.77	249.48	68.27	120.25	157.66	23.54
2013/14	20.12	23.54	171.58	66.65	261.76	70.12	125.19	165.95	25.69
2014/15	20.96	25.69	177.49	70.17	273.35	76.55	130.35	169.84	26.95
2015/16	22.06	26.95	176.36	70.43	273.75	73.84	134.60	176.88	23.02
2016/17	23.18	23.03	189.14	76.19	288.35	82.01	138.45	182.43	23.91
2017/18	24.14	23.91	198.77	76.13	298.81	80.99	142.33	190.95	26.87
2018/19	24.60	26.87	204.42	82.09	313.38	86.88	145.43	197.98	28.53
2019/20	25.04	28.53	208.01	82.80	319.33	87.17	148.49	201.33	30.83
2020/21	25.37	30.83	208.03	81.19	320.05	85.79	151.13	204.55	29.71
2021/22	25.94	29.71	208.58	74.23	312.51	79.69	149.50	202.74	30.09
2022/23	27.06	30.09	216.78	83.57	330.44	88.86	152.75	210.96	30.62
2023/24	27.39	30.62	222.76	80.72	334.10	86.08	156.05	217.92	30.10
2024/25	27.91	30.10	227.02	81.74	338.86	86.67	160.45	223.86	28.33

Based on the aggregate of different marketing years

Table 16: World Soybeans and Products Supply and Distribution

Million Metric Tons

	Area Harvested	Beginning Stocks	Production	Imports	Total Supply	Exports	Crush	Domestic Consumpti	Ending Stocks
Oilseed, Soybean									
2011/12	103.05	73.50	241.17	94.66	409.32	91.83	229.35	259.44	58.06
2012/13	110.37	58.06	268.92	97.13	424.11	100.41	232.08	265.39	58.31
2013/14	113.20	58.31	283.32	113.28	454.92	112.80	243.23	278.28	63.84
2014/15	119.16	63.84	321.44	124.36	509.64	126.44	265.26	303.89	79.31
2015/16	120.88	79.31	316.07	134.04	529.43	132.84	275.76	316.89	79.69
2016/17	120.55	79.72	350.81	145.00	575.52	147.74	288.38	332.16	95.63
2017/18	125.24	95.63	343.76	154.17	593.55	153.40	295.75	340.38	99.77
2018/19	126.05	99.77	363.45	145.92	609.14	149.22	299.18	345.66	114.26
2019/20	123.53	114.26	341.35	165.30	620.91	165.82	312.43	359.97	95.12
2020/21	129.85	95.12	369.27	166.20	630.59	165.18	318.16	367.07	98.35
2021/22	131.35	98.35	360.38	154.47	613.20	154.44	316.63	366.13	92.64
2022/23	137.11	92.64	378.60	167.89	639.12	171.75	315.29	366.36	101.01
2023/24	139.85	101.01	394.73	177.90	673.64	177.04	331.13	384.18	112.42
2024/25	145.83	112.42	425.40	177.91	715.73	181.71	346.15	402.28	131.74
Meal, Soybean									
2011/12	nr	9.49	180.94	57.21	247.64	58.73	229.36	177.89	11.03
2012/13	nr	11.03	182.31	54.57	247.92	58.50	232.18	178.73	10.69
2013/14	nr	10.69	190.59	58.49	259.77	60.86	243.33	187.17	11.74
2014/15	nr	11.74	208.63	61.40	281.77	64.64	265.27	202.48	14.66
2015/16	nr	14.66	216.34	63.35	294.34	65.85	275.77	213.75	14.73
2016/17	nr	14.90	226.28	61.72	302.90	65.41	288.39	222.27	15.23
2017/18	nr	15.23	232.86	62.89	310.98	65.80	295.76	228.93	16.25
2018/19	nr	16.25	234.04	63.55	313.84	68.06	299.18	230.50	15.29
2019/20	nr	15.29	245.15	63.99	324.43	67.94	312.44	240.40	16.09
2020/21	nr	16.09	249.75	65.32	331.16	69.44	318.16	245.77	15.95
2021/22	nr	15.95	248.16	67.13	331.24	68.82	316.63	245.97	16.45
2022/23	nr	16.45	247.66	63.36	327.46	67.07	315.29	247.01	13.38
2023/24	nr	13.38	260.00	69.79	343.17	74.70	331.13	254.08	14.40
2024/25	nr	14.40	271.49	71.26	357.14	74.67	346.15	266.18	16.29
Oil, Soybean									
2011/12	nr	4.60	42.87	8.02	55.48	8.55	229.35	42.46	4.48
2012/13	nr	4.48	43.42	8.53	56.42	9.36	232.17	42.60	4.46
2013/14	nr	4.46	45.33	9.35	59.14	9.43	243.33	45.51	4.21
2014/15	nr	4.21	49.38	10.18	63.77	11.19	265.26	47.88	4.70
2015/16	nr	4.70	51.66	11.74	68.10	11.83	275.76	52.07	4.19
2016/17	nr	4.21	53.95	11.22	69.39	11.45	288.38	53.57	4.36
2017/18	nr	4.36	55.33	10.05	69.74	10.78	295.75	54.43	4.53
2018/19	nr	4.53	56.49	10.93	71.95	11.48	299.18	55.63	4.84
2019/20	nr	4.84	58.88	11.61	75.32	12.38	312.43	57.27	5.67
2020/21	nr	5.67	60.06	11.69	77.42	12.61	318.16	58.91	5.91
2021/22	nr	5.91	60.05	11.34	77.29	12.44	316.63	59.76	5.10
2022/23	nr	5.10	59.61	10.81	75.52	11.71	315.29	58.79	5.03
2023/24	nr	5.03	62.78	10.35	78.15	11.87	331.13	61.18	5.10
2024/25	nr	5.10	65.49	11.21	81.80	12.10	346.15	64.73	4.97

Based on the aggregate of different marketing years, primarily October through September.

Table 17: World Rapeseed and Products Supply and Distribution

Million Metric Tons

	Area Harvested	Beginning Stocks	Production	Imports	Total Supply	Exports	Food Use Dom.	Domestic Consumpti	Ending Stocks
Oilseed, Rapeseed									
2011/12	33.55	8.71	61.55	13.24	83.51	12.99	0.46	63.73	6.79
2012/13	36.07	6.79	63.67	12.83	83.29	12.57	0.48	65.20	5.52
2013/14	36.07	5.52	71.11	15.55	92.18	15.10	0.50	69.28	7.80
2014/15	35.43	7.80	70.99	14.32	93.11	15.11	0.56	70.63	7.37
2015/16	33.75	7.37	69.40	14.13	90.90	14.40	0.66	70.14	6.37
2016/17	33.80	6.42	70.17	15.80	92.38	16.15	0.66	70.93	5.31
2017/18	36.17	5.31	75.80	15.73	96.83	16.60	0.66	72.10	8.14
2018/19	36.23	8.14	73.49	14.64	96.27	14.70	0.17	71.88	9.69
2019/20	35.14	9.69	70.33	15.82	95.84	16.00	0.27	72.30	7.54
2020/21	35.34	7.54	74.75	16.67	98.96	18.03	0.37	74.69	6.23
2021/22	38.46	6.23	75.83	13.92	95.99	15.35	0.67	75.89	4.75
2022/23	41.95	4.75	88.90	20.05	113.70	19.55	0.67	85.19	8.96
2023/24	43.31	8.96	89.89	18.40	117.24	18.01	0.67	89.12	10.11
2024/25	42.51	10.11	87.24	16.80	114.15	17.14	0.75	88.96	8.05
Meal, Rapeseed									
2011/12	nr	1.05	35.11	5.57	41.73	5.56	0.00	35.05	1.11
2012/13	nr	1.11	36.10	5.63	42.84	5.70	0.00	36.24	0.90
2013/14	nr	0.90	38.54	6.51	45.95	6.36	0.00	38.69	0.90
2014/15	nr	0.90	38.99	6.01	45.90	6.07	0.00	38.86	0.97
2015/16	nr	0.97	38.84	5.71	45.52	5.70	0.00	38.67	1.15
2016/17	nr	1.33	39.10	6.19	46.61	6.26	0.00	38.96	1.40
2017/18	nr	1.40	39.66	6.51	47.57	6.68	0.00	39.43	1.46
2018/19	nr	1.46	39.57	7.17	48.20	7.22	0.00	39.74	1.25
2019/20	nr	1.25	39.83	8.01	49.09	7.72	0.00	39.97	1.40
2020/21	nr	1.40	41.59	8.37	51.36	8.23	0.00	41.85	1.28
2021/22	nr	1.28	41.93	7.67	50.88	7.76	0.00	41.63	1.49
2022/23	nr	1.49	47.22	9.29	58.00	9.78	0.00	46.97	1.25
2023/24	nr	1.25	49.38	9.92	60.55	10.19	0.00	48.95	1.41
2024/25	nr	1.41	49.10	10.45	60.96	10.52	0.00	49.07	1.38
Oil, Rapeseed									
2011/12	nr	2.28	24.87	4.08	31.23	3.98	16.55	23.92	3.34
2012/13	nr	3.34	25.50	3.94	32.78	3.95	16.61	23.87	4.95
2013/14	nr	4.95	27.20	3.82	35.97	3.83	17.95	25.86	6.28
2014/15	nr	6.28	27.62	3.95	37.85	4.07	18.94	27.11	6.68
2015/16	nr	6.68	27.56	4.13	38.37	4.17	20.13	28.49	5.71
2016/17	nr	5.66	27.81	4.56	38.02	4.64	20.56	29.14	4.25
2017/18	nr	4.25	28.32	4.84	37.41	4.83	20.58	29.18	3.40
2018/19	nr	3.40	28.03	5.18	36.61	5.26	20.30	28.38	2.96
2019/20	nr	2.96	28.36	5.80	37.12	5.87	20.23	28.34	2.91
2020/21	nr	2.91	29.44	6.33	38.68	6.42	20.46	28.60	3.66
2021/22	nr	3.66	29.17	5.13	37.96	5.21	22.02	30.16	2.59
2022/23	nr	2.59	32.86	6.89	42.34	6.55	23.48	32.68	3.11
2023/24	nr	3.11	34.50	7.57	45.18	7.41	24.48	34.58	3.18
2024/25	nr	3.18	34.29	7.73	45.20	7.78	24.37	34.63	2.79

Based on the aggregate of different marketing years.

Table 18: World Sunflower and Products Supply and Distribution

Million Metric Tons

	Area Harvested	Beginning Stocks	Production	Imports	Exports	Food Use Dom.	Domestic Consumpti	Ending Stocks
Oilseed, Sunflowerseed								
2011/12	24.65	2.26	38.74	1.74	1.93	1.77	38.28	2.54
2012/13	23.58	2.54	34.93	1.36	1.47	1.76	34.59	2.77
2013/14	24.01	2.77	41.57	1.73	2.01	1.91	40.76	3.31
2014/15	23.09	3.31	39.25	1.63	1.68	2.01	39.55	2.95
2015/16	23.46	2.95	40.70	2.11	2.13	2.05	40.70	2.93
2016/17	25.95	2.93	48.35	2.46	2.68	2.06	47.39	3.66
2017/18	25.93	3.66	47.92	2.38	2.75	2.09	48.11	3.10
2018/19	25.66	3.10	50.33	2.89	3.19	2.07	50.34	2.79
2019/20	25.83	2.79	53.91	3.35	3.60	2.09	53.45	3.00
2020/21	26.77	3.00	48.87	2.72	2.95	2.08	49.23	2.41
2021/22	28.54	2.41	56.86	3.83	3.95	2.08	51.31	7.85
2022/23	28.30	7.85	52.78	3.77	4.02	2.12	56.24	4.15
2023/24	27.94	4.15	56.03	2.54	2.88	2.10	56.67	3.16
2024/25	27.79	3.16	50.44	2.17	2.30	1.92	51.20	2.28
Meal, Sunflowerseed								
2011/12	nr	1.08	15.62	6.44	6.81	0.00	14.67	1.67
2012/13	nr	1.67	14.14	4.96	5.14	0.00	14.88	0.75
2013/14	nr	0.75	16.84	5.81	6.23	0.00	15.78	1.39
2014/15	nr	1.39	16.17	5.56	5.87	0.00	15.73	1.52
2015/16	nr	1.52	16.54	5.99	6.24	0.00	16.39	1.42
2016/17	nr	1.42	19.50	7.12	7.61	0.00	18.96	1.47
2017/18	nr	1.47	20.00	6.81	7.16	0.00	19.34	1.78
2018/19	nr	1.78	20.98	8.11	8.18	0.00	20.69	2.00
2019/20	nr	2.00	21.83	8.56	8.85	0.00	21.44	2.11
2020/21	nr	2.11	20.28	7.58	8.16	0.00	20.49	1.32
2021/22	nr	1.32	21.23	7.35	7.84	0.00	20.98	1.08
2022/23	nr	1.08	23.07	8.54	9.16	0.00	21.81	1.72
2023/24	nr	1.72	23.28	9.96	10.20	0.00	22.65	2.11
2024/25	nr	2.11	21.04	8.13	8.67	0.00	21.00	1.61
Oil, Sunflowerseed								
2011/12	nr	1.94	14.37	5.89	6.52	11.89	12.62	3.05
2012/13	nr	3.05	12.85	5.09	5.55	12.40	13.20	2.24
2013/14	nr	2.24	15.65	7.05	7.78	13.41	14.22	2.94
2014/15	nr	2.94	14.97	6.33	7.41	13.43	14.24	2.59
2015/16	nr	2.59	15.40	7.32	8.21	14.16	15.07	2.04
2016/17	nr	2.12	18.30	9.31	10.75	15.41	16.37	2.62
2017/18	nr	2.62	18.57	9.15	10.32	16.42	17.40	2.61
2018/19	nr	2.61	19.62	9.73	11.51	16.99	18.00	2.44
2019/20	nr	2.44	21.21	11.75	13.49	17.89	18.90	3.01
2020/21	nr	3.01	19.01	9.67	11.34	17.28	18.31	2.04
2021/22	nr	2.04	19.69	9.68	11.22	16.46	17.56	2.65
2022/23	nr	2.65	21.72	12.56	14.28	18.38	19.55	3.11
2023/24	nr	3.11	22.13	13.60	15.04	19.86	21.04	2.76
2024/25	nr	2.76	19.92	10.48	12.03	17.86	19.03	2.09

Based on the aggregate of different marketing years, primarily September through August.

Table 19: World Palm Oil, Coconut Oil, and Fish Meal Supply and Distribution

Million Metric Tons

	Beginning Stocks	Production	Imports	Total Supply	Exports	Industrial Dom.	Food Use Dom.	Domestic Consumpti	Ending Stocks
Oil, Palm									
2011/12	8.49	52.31	37.84	98.65	39.73	12.46	36.24	49.35	9.57
2012/13	9.57	56.34	41.39	107.30	43.00	14.67	39.51	54.82	9.48
2013/14	9.48	59.20	41.16	109.84	43.09	16.21	40.27	57.12	9.63
2014/15	9.63	62.09	43.86	115.57	47.33	14.35	42.42	57.41	10.84
2015/16	10.84	58.75	41.79	111.37	43.79	16.41	41.85	58.95	8.63
2016/17	8.58	65.57	45.63	119.78	48.94	16.72	43.05	60.44	10.40
2017/18	10.40	70.51	46.02	126.94	48.66	19.85	44.75	65.29	12.99
2018/19	12.99	74.17	49.89	137.04	51.49	22.72	47.15	70.56	14.99
2019/20	14.99	73.13	47.04	135.15	48.36	23.10	46.97	70.78	16.02
2020/21	16.02	73.36	46.86	136.25	48.56	23.51	48.25	72.46	15.23
2021/22	15.23	73.16	41.60	129.98	43.90	22.88	45.87	69.41	16.67
2022/23	16.67	76.56	47.12	140.35	49.52	25.39	48.21	74.26	16.58
2023/24	16.58	77.28	43.03	136.89	44.96	26.34	48.14	75.50	16.43
2024/25	16.43	80.18	45.98	142.59	47.98	26.88	51.39	78.86	15.75
Oil, Coconut									
2011/12	0.75	3.27	1.83	5.85	1.86	1.48	1.86	3.37	0.62
2012/13	0.62	3.48	1.89	5.99	1.93	1.62	1.90	3.56	0.50
2013/14	0.50	3.37	1.74	5.61	1.91	1.51	1.72	3.27	0.43
2014/15	0.43	3.31	1.82	5.56	1.94	1.44	1.70	3.18	0.44
2015/16	0.44	3.20	1.61	5.25	1.58	1.47	1.60	3.10	0.58
2016/17	0.57	3.38	1.54	5.49	1.79	1.55	1.63	3.21	0.50
2017/18	0.50	3.69	1.75	5.94	1.76	1.65	1.74	3.42	0.76
2018/19	0.76	3.79	1.86	6.40	2.14	1.70	1.80	3.54	0.73
2019/20	0.73	3.61	1.84	6.18	1.88	1.75	1.87	3.65	0.64
2020/21	0.64	3.58	1.95	6.17	1.73	1.70	1.92	3.65	0.79
2021/22	0.79	3.73	2.24	6.76	2.24	1.63	1.93	3.60	0.91
2022/23	0.91	3.72	1.94	6.58	2.18	1.63	1.88	3.55	0.85
2023/24	0.85	3.77	1.94	6.57	1.99	1.74	1.93	3.70	0.87
2024/25	0.87	3.65	1.91	6.43	1.99	1.75	1.92	3.70	0.74
Meal, Fish									
2011/12	0.69	4.71	3.05	8.44	2.80	0.05	0.00	5.36	0.28
2012/13	0.28	4.84	2.47	7.59	2.32	0.05	0.00	4.81	0.46
2013/14	0.46	4.45	2.73	7.64	2.47	0.05	0.00	4.94	0.23
2014/15	0.23	4.69	2.51	7.42	2.28	0.05	0.00	4.87	0.27
2015/16	0.27	4.51	2.44	7.21	2.21	0.05	0.00	4.73	0.27
2016/17	0.27	4.88	3.06	8.21	2.59	0.05	0.00	5.37	0.25
2017/18	0.25	4.80	3.05	8.10	2.69	0.05	0.00	5.17	0.25
2018/19	0.25	4.77	3.08	8.10	2.65	0.05	0.00	5.20	0.24
2019/20	0.24	4.65	3.09	7.98	2.67	0.08	0.00	5.05	0.26
2020/21	0.26	4.86	3.41	8.52	2.95	0.06	0.00	5.38	0.19
2021/22	0.19	4.97	3.59	8.75	2.84	0.07	0.00	5.64	0.27
2022/23	0.27	4.51	3.33	8.10	2.50	0.07	0.00	5.37	0.23
2023/24	0.23	5.13	3.65	9.01	3.07	0.08	0.00	5.72	0.23
2024/25	0.23	5.15	3.61	8.99	3.07	0.08	0.00	5.68	0.24

Based on the aggregate of different marketing years.

Table 20: United States Oilseeds and Products Supply and Distribution Local Marketing Year

Thousand Metric Tons

	Area Harvested	Beginning Stocks	Production	Imports	Total Supply	Exports	Crush	Domestic Consumpti	Ending Stocks
Major Oilseeds									
2011/12	35,131	7,319	92,442	1,285	101,046	37,813	50,316	57,621	5,612
2012/13	36,676	5,612	93,323	1,605	100,540	37,156	50,250	57,621	5,763
2013/14	35,428	5,763	98,986	3,067	107,816	45,569	51,455	58,294	3,953
2014/15	38,991	3,953	116,050	1,851	121,854	51,109	55,108	63,989	6,756
2015/16	38,403	6,756	115,891	1,130	123,777	53,968	55,055	62,940	6,869
2016/17	39,247	6,869	126,942	1,502	135,313	60,084	56,257	65,628	9,601
2017/18	42,801	9,601	131,483	1,419	142,503	59,315	60,168	69,361	13,827
2018/19	41,317	13,827	130,709	1,116	145,652	48,861	61,034	69,815	26,976
2019/20	36,811	26,976	106,951	1,216	135,143	47,067	63,037	71,737	16,339
2020/21	38,809	16,339	124,544	1,205	142,088	62,781	62,655	70,668	8,639
2021/22	41,048	8,639	131,322	1,182	141,143	59,552	63,869	72,449	9,142
2022/23	39,909	9,142	125,753	1,524	136,419	54,784	64,161	72,785	8,850
2023/24	37,984	8,850	122,164	1,110	132,124	47,347	66,320	73,973	10,804
2024/25	40,502	10,804	131,146	992	142,942	50,790	69,831	77,931	14,221
Major Protein Meals									
2011/12	nr	378	39,450	3,032	42,860	9,170	50,316	33,354	336
2012/13	nr	336	38,593	3,393	42,322	10,460	50,250	31,548	314
2013/14	nr	314	39,291	3,798	43,403	10,803	51,455	32,308	292
2014/15	nr	292	43,210	3,873	47,375	12,144	55,108	34,941	290
2015/16	nr	290	42,773	4,070	47,133	11,178	55,055	35,680	275
2016/17	nr	275	43,117	3,920	47,312	10,826	56,257	36,078	408
2017/18	nr	408	47,063	3,736	51,207	13,005	60,168	37,639	563
2018/19	nr	563	46,532	3,935	51,030	12,447	61,034	38,161	422
2019/20	nr	422	48,770	4,121	53,313	12,826	63,037	40,101	386
2020/21	nr	386	48,224	4,385	52,995	12,623	62,655	39,981	391
2021/22	nr	391	49,229	3,570	53,190	12,479	63,869	40,358	353
2022/23	nr	353	49,939	4,308	54,600	13,392	64,161	40,794	414
2023/24	nr	414	51,485	4,282	56,181	14,811	66,320	40,883	487
2024/25	nr	487	53,932	4,352	58,771	15,987	69,831	42,289	495
Major Vegetable Oils									
2011/12	0	1,723	10,032	3,831	15,586	1,146	50,316	12,873	1,567
2012/13	0	1,567	10,231	3,801	15,599	1,387	50,250	13,068	1,144
2013/14	0	1,144	10,425	4,016	15,585	1,116	51,455	13,498	971
2014/15	0	971	10,938	4,230	16,139	1,174	55,108	13,679	1,286
2015/16	0	1,286	11,210	4,527	17,023	1,248	55,055	14,541	1,234
2016/17	0	1,234	11,433	4,731	17,398	1,416	56,257	14,712	1,270
2017/18	0	1,270	12,107	4,783	18,160	1,342	60,168	15,531	1,287
2018/19	0	1,287	12,188	4,702	18,177	1,092	61,034	15,892	1,193
2019/20	0	1,193	12,632	4,901	18,726	1,504	63,037	16,014	1,208
2020/21	0	1,208	12,692	4,950	18,850	1,042	62,655	16,509	1,299
2021/22	0	1,299	13,053	5,263	19,615	1,048	63,869	17,271	1,296
2022/23	0	1,296	13,179	6,266	20,741	335	64,161	19,272	1,134
2023/24	0	1,134	13,628	6,864	21,626	420	66,320	20,191	1,015
2024/25	0	1,015	14,211	7,220	22,446	429	69,831	20,945	1,072

Based on the aggregate of different marketing years

Table 21: United States Soybeans and Products Supply and Distribution (Sep-Aug)

Thousand Metric Tons

	Area Harvested	Beginning Stocks	Production	Imports	Total Supply	Exports	Crush	Domestic Consumpti	Ending Stocks
Oilseed, Soybean									
2011/12	29,856	5,852	84,291	439	90,582	37,186	46,348	48,786	4,610
2012/13	30,814	4,610	82,791	1,103	88,504	36,129	45,967	48,550	3,825
2013/14	30,850	3,825	91,363	1,953	97,141	44,594	47,192	50,043	2,504
2014/15	33,431	2,504	106,905	904	110,313	50,136	50,975	54,989	5,188
2015/16	33,080	5,188	106,869	641	112,698	52,869	51,335	54,475	5,354
2016/17	33,470	5,354	116,931	606	122,891	58,964	51,742	55,719	8,208
2017/18	36,236	8,208	120,065	594	128,867	58,071	55,926	58,873	11,923
2018/19	35,448	11,923	120,515	383	132,821	47,721	56,935	59,924	25,176
2019/20	30,318	25,176	96,644	419	122,239	45,800	58,910	61,782	14,657
2020/21	33,428	14,657	114,749	539	129,945	61,664	58,257	61,287	6,994
2021/22	34,921	6,994	121,504	433	128,931	58,570	59,980	62,893	7,468
2022/23	34,873	7,468	116,221	667	124,356	53,874	60,199	63,292	7,190
2023/24	33,294	7,190	113,273	567	121,030	46,128	62,244	65,594	9,308
2024/25	34,913	9,308	121,417	408	131,133	49,668	65,589	68,668	12,797
Meal, Soybean									
2011/12	nr	318	37,217	196	37,731	8,845	46,348	28,614	272
2012/13	nr	272	36,174	222	36,668	10,111	45,967	26,308	249
2013/14	nr	249	36,909	347	37,505	10,504	47,192	26,774	227
2014/15	nr	227	40,880	302	41,409	11,891	50,975	29,282	236
2015/16	nr	236	40,525	358	41,119	10,843	51,335	30,037	239
2016/17	nr	239	40,630	313	41,182	10,505	51,742	30,314	363
2017/18	nr	363	44,657	438	45,458	12,717	55,926	32,237	504
2018/19	nr	504	44,283	620	45,407	12,141	56,935	32,901	365
2019/20	nr	365	46,358	580	47,303	12,549	58,910	34,444	310
2020/21	nr	310	45,872	712	46,894	12,406	58,257	34,179	309
2021/22	nr	309	47,005	594	47,908	12,303	59,980	35,323	282
2022/23	nr	282	47,621	575	48,478	13,196	60,199	34,946	336
2023/24	nr	336	49,120	623	50,079	14,612	62,244	35,056	411
2024/25	nr	411	51,480	612	52,503	15,785	65,589	36,310	408
Oil, Soybean									
2011/12	nr	1,213	8,954	68	10,235	664	46,348	8,396	1,175
2012/13	nr	1,175	8,990	89	10,254	981	45,967	8,522	751
2013/14	nr	751	9,131	75	9,957	852	47,192	8,577	528
2014/15	nr	528	9,706	120	10,354	914	50,975	8,599	841
2015/16	nr	841	9,956	130	10,927	1,017	51,335	9,145	765
2016/17	nr	765	10,035	145	10,945	1,159	51,742	9,010	776
2017/18	nr	776	10,783	152	11,711	1,108	55,926	9,698	905
2018/19	nr	905	10,976	180	12,061	880	56,935	10,376	805
2019/20	nr	805	11,299	145	12,249	1,287	58,910	10,122	840
2020/21	nr	840	11,350	137	12,327	786	58,257	10,574	967
2021/22	nr	967	11,864	137	12,968	803	59,980	11,262	903
2022/23	nr	903	11,897	170	12,970	171	60,199	12,070	729
2023/24	nr	729	12,306	282	13,317	280	62,244	12,356	681
2024/25	nr	681	12,853	227	13,761	272	65,589	12,792	697

Data based on Local Marketing Year (MY). Soybeans are on a September/August MY, and Soybean Meal and Oil are on an October/September MY.

Table 22: Brazil Soybeans and Products Supply and Distribution Local Marketing Years (Jan-Dec)

Thousand Metric Tons

	Area Harvested	Beginning Stocks	Production	Imports	Total Supply	Exports	Crush	Domestic Consumpti	Ending Stocks
Oilseed, Soybean (Local)									
2011/12	25,000	13,044	66,500	268	79,812	32,906	36,434	38,834	8,072
2012/13	27,700	8,072	82,000	282	90,354	42,796	36,237	38,612	8,946
2013/14	30,100	8,946	86,200	579	95,725	45,692	37,622	40,172	9,861
2014/15	32,100	9,861	97,100	324	107,285	54,324	40,556	43,206	9,755
2015/16	33,300	9,755	95,700	382	105,837	51,582	39,531	42,206	12,049
2016/17	33,900	12,049	114,900	254	127,203	68,155	41,837	44,737	14,311
2017/18	35,150	14,311	123,400	187	137,898	83,258	43,556	46,756	7,884
2018/19	35,900	7,884	120,500	144	128,528	74,073	43,454	46,369	8,086
2019/20	36,900	8,086	128,500	822	137,408	82,973	46,845	49,995	4,440
2020/21	39,500	4,440	139,500	864	144,804	86,110	47,781	51,081	7,613
2021/22	41,500	7,613	130,500	419	138,532	78,730	50,932	54,177	5,625
2022/23	44,600	5,625	162,000	181	167,806	101,870	54,165	57,965	7,971
2023/24	45,800	7,971	153,000	925	161,896	98,000	54,000	57,750	6,146
2024/25	47,300	6,146	169,000	150	175,296	109,000	54,500	58,500	7,796
Meal, Soybean (Local)									
2011/12	nr	2,711	28,054	19	30,784	14,289	36,434	13,900	2,595
2012/13	nr	2,595	27,902	33	30,530	13,334	36,237	14,500	2,696
2013/14	nr	2,696	28,969	26	31,691	13,716	37,622	15,300	2,675
2014/15	nr	2,675	31,228	17	33,920	14,827	40,556	15,700	3,393
2015/16	nr	3,393	30,439	27	33,859	14,445	39,531	16,450	2,964
2016/17	nr	2,964	32,214	36	35,214	14,179	41,837	17,000	4,035
2017/18	nr	4,035	33,538	13	37,586	16,673	43,556	17,311	3,602
2018/19	nr	3,602	33,460	23	37,085	16,682	43,454	17,645	2,758
2019/20	nr	2,758	36,071	12	38,841	16,938	46,845	18,200	3,703
2020/21	nr	3,703	36,791	18	40,512	17,149	47,781	19,000	4,363
2021/22	nr	4,363	39,218	6	43,587	20,353	50,932	19,700	3,534
2022/23	nr	3,534	41,707	8	45,249	22,474	54,165	20,300	2,475
2023/24	nr	2,475	41,580	20	44,075	21,700	54,000	20,000	2,375
2024/25	nr	2,375	41,965	10	44,350	20,500	54,500	21,000	2,850
Oil, Soybean (Local)									
2011/12	nr	433	6,922	1	7,356	1,756	36,434	5,300	300
2012/13	nr	300	6,885	5	7,190	1,362	36,237	5,530	298
2013/14	nr	298	7,148	0	7,446	1,305	37,622	5,750	391
2014/15	nr	391	7,706	25	8,122	1,670	40,556	6,200	252
2015/16	nr	252	7,511	66	7,829	1,254	39,531	6,300	275
2016/17	nr	275	7,949	58	8,282	1,343	41,837	6,700	239
2017/18	nr	239	8,493	35	8,767	1,415	43,556	7,100	252
2018/19	nr	252	8,474	48	8,774	1,041	43,454	7,500	233
2019/20	nr	233	9,135	199	9,567	1,110	46,845	7,850	607
2020/21	nr	607	9,556	107	10,270	1,651	47,781	8,150	469
2021/22	nr	469	10,186	24	10,679	2,597	50,932	7,725	357
2022/23	nr	357	10,833	21	11,211	2,333	54,165	8,375	503
2023/24	nr	503	10,800	80	11,383	1,500	54,000	9,350	533
2024/25	nr	533	10,900	25	11,458	1,500	54,500	9,525	433

Data based on Brazil's local January/December Marketing Year (MY). Where January 2012 - December 2012 is the 2011/12 MY.

Table 23: Argentina Soybeans and Products Supply and Distribution Local Marketing Years (Apr-Mar)

Thousand Metric Tons

	Area Harvested	Beginning Stocks	Production	Imports	Total Supply	Exports	Crush	Domestic Consumpti	Ending Stocks
Oilseed, Soybean (Local)									
2011/12	17,577	2,106	40,100	2	42,208	6,098	30,681	33,431	2,679
2012/13	19,750	2,679	49,300	2	51,981	7,817	35,009	40,009	4,155
2013/14	19,250	4,155	53,400	2	57,557	7,434	38,503	43,503	6,620
2014/15	19,350	6,620	61,450	141	68,211	11,670	45,110	50,360	6,181
2015/16	19,350	6,181	58,800	1,304	66,285	9,046	43,042	49,242	7,997
2016/17	17,335	7,997	55,000	2,600	65,597	7,247	40,940	47,440	10,910
2017/18	16,300	10,910	37,800	7,256	55,966	3,842	36,359	43,055	9,069
2018/19	16,600	9,069	55,300	3,789	68,158	10,256	41,188	48,088	9,814
2019/20	16,700	9,814	48,800	4,939	63,553	6,662	37,870	45,120	11,771
2020/21	16,470	11,771	46,200	4,438	62,409	5,377	41,043	48,393	8,639
2021/22	15,900	8,639	43,900	4,571	57,110	5,552	35,900	43,100	8,458
2022/23	15,000	8,458	25,000	10,395	43,853	1,891	28,997	35,247	6,715
2023/24	16,300	6,715	48,100	5,900	60,715	4,700	40,000	47,250	8,765
2024/25	16,900	8,765	51,000	6,000	65,765	5,000	41,000	48,600	12,165
Meal, Soybean (Local)									
2011/12	nr	2,875	23,946	0	26,821	21,973	30,681	1,550	3,298
2012/13	nr	3,298	27,150	0	30,448	23,937	35,009	1,950	4,561
2013/14	nr	4,561	29,528	0	34,089	27,473	38,503	2,200	4,416
2014/15	nr	4,416	34,737	1	39,154	31,873	45,110	2,524	4,757
2015/16	nr	4,757	33,350	0	38,107	30,981	43,042	2,759	4,367
2016/17	nr	4,367	31,750	0	36,117	29,255	40,940	2,930	3,932
2017/18	nr	3,932	28,270	1	32,203	25,849	36,359	3,084	3,270
2018/19	nr	3,270	32,000	27	35,297	29,285	41,188	3,175	2,837
2019/20	nr	2,837	29,539	1	32,377	26,584	37,870	3,217	2,576
2020/21	nr	2,576	32,050	1	34,627	28,652	41,043	3,300	2,675
2021/22	nr	2,675	28,002	194	30,871	24,849	35,900	3,325	2,697
2022/23	nr	2,697	22,612	8	25,317	19,115	28,997	3,400	2,802
2023/24	nr	2,802	31,200	1	34,003	27,700	40,000	3,500	2,803
2024/25	nr	2,803	31,980	1	34,784	28,200	41,000	3,700	2,884
Oil, Soybean (Local)									
2011/12	nr	391	5,840	35	6,266	3,433	30,681	2,550	283
2012/13	nr	283	6,616	59	6,958	4,281	35,009	2,375	302
2013/14	nr	302	7,191	26	7,519	4,296	38,503	2,843	380
2014/15	nr	380	8,753	5	9,138	6,312	45,110	2,308	518
2015/16	nr	518	8,382	0	8,900	5,386	43,042	3,055	459
2016/17	nr	459	7,925	0	8,384	4,721	40,940	3,290	373
2017/18	nr	373	7,150	1	7,524	4,566	36,359	2,610	348
2018/19	nr	348	8,044	0	8,392	5,113	41,188	2,625	654
2019/20	nr	654	7,460	0	8,114	6,150	37,870	1,790	174
2020/21	nr	174	8,102	15	8,291	5,480	41,043	2,195	616
2021/22	nr	616	7,079	78	7,773	4,575	35,900	2,750	448
2022/23	nr	448	5,726	0	6,174	4,178	28,997	1,760	236
2023/24	nr	236	7,900	10	8,146	5,750	40,000	2,150	246
2024/25	nr	246	8,098	10	8,354	5,400	41,000	2,660	294

Data based on Argentina's Local April/March Marketing Year (MY). Where April 2012 - March 2013 is the 2011/12 MY.

Table 24: South East Asia Oilseeds and Products Supply and Distribution

Thousand Metric Tons

	2020/21	2021/22	2022/23	2023/24	Oct 2024/25	Nov 2024/25
Production						
Oilseed, Copra	4,455	4,667	4,667	4,977	4,567	4,567
Oilseed, Palm Kernel	16,624	16,228	17,078	17,234	17,933	17,933
Oilseed, Soybean	726	666	621	598	575	575
Other	3,533	3,563	3,679	3,653	3,660	3,660
Total	25,338	25,124	26,045	26,462	26,735	26,735
Domestic Consumption						
Meal, Fish	843	856	864	890	870	855
Meal, Palm Kernel	2,052	1,620	2,008	2,696	2,351	2,351
Meal, Soybean	21,358	21,975	21,433	21,238	23,343	23,133
Other	2,174	1,945	2,508	2,446	2,291	2,291
Total	26,427	26,396	26,813	27,270	28,855	28,630
SME						
Meal, Fish	1,218	1,237	1,248	1,286	1,257	1,235
Meal, Palm Kernel	730	576	714	959	836	836
Meal, Soybean	21,278	21,890	21,348	21,148	23,248	23,038
Other	1,427	1,303	1,677	1,622	1,550	1,550
Total	24,653	25,006	24,988	25,015	26,891	26,659
Imports						
Meal, Fish	329	342	365	360	370	370
Meal, Palm Kernel	900	809	988	915	919	919
Meal, Soybean	18,085	19,010	18,229	18,019	20,200	20,200
Other	681	542	966	874	796	796
Total	19,995	20,703	20,548	20,168	22,285	22,285
Industrial Dom. Cons.						
Oil, Palm	13,212	14,281	16,335	17,860	18,265	18,365
Oil, Rapeseed	0	0	0	0	0	0
Oil, Soybean	54	54	54	54	54	54
Oil, Sunflowerseed	0	0	0	0	0	0
Other	4,969	4,956	5,148	5,247	5,507	5,507
Total	18,235	19,291	21,537	23,161	23,826	23,926
Food Use Dom. Cons.						
Oil, Palm	11,030	11,460	11,720	12,135	12,462	12,462
Oil, Rapeseed	13	14	16	24	17	17
Oil, Soybean	795	731	542	543	624	624
Oil, Sunflowerseed	158	143	143	146	146	146
Other	1,653	1,649	1,684	1,670	1,772	1,772
Total	13,649	13,997	14,105	14,518	15,021	15,021
Domestic Consumption						
Oil, Palm	24,627	26,125	28,492	30,815	31,147	31,247
Oil, Rapeseed	13	14	16	24	17	17
Oil, Soybean	849	785	596	597	678	678
Oil, Sunflowerseed	158	143	143	146	146	146
Other	6,632	6,615	6,842	6,927	7,289	7,289
Total	32,279	33,682	36,089	38,509	39,277	39,377
Imports						
Oil, Palm	4,459	4,221	3,761	3,423	3,472	3,472
Oil, Rapeseed	12	13	16	24	14	14
Oil, Soybean	295	236	267	249	255	255
Oil, Sunflowerseed	27	12	12	15	15	15
Other	708	840	556	590	633	633
Total	5,501	5,322	4,612	4,301	4,389	4,389

Southeast Asia includes Brunei, Burma, Cambodia, Indonesia, Laos, Malaysia, Philippines, Singapore, Thailand, and Vietnam. SME - 44 Percent Protein Soybean Meal Equivalent

Table 25: Middle East Oilseeds and Products Supply and Distribution

Thousand Metric Tons

	2020/21	2021/22	2022/23	2023/24	Oct 2024/25	Nov 2024/25
Production						
Oilseed, Cottonseed	1,165	1,413	1,848	1,230	1,508	1,508
Oilseed, Rapeseed	415	430	470	470	475	475
Oilseed, Soybean	285	289	317	309	324	324
Oilseed, Sunflowerseed	1,608	1,796	1,946	1,597	1,599	1,424
Other	216	234	186	200	205	205
Total	3,689	4,162	4,767	3,806	4,111	3,936
Domestic Consumption						
Meal, Cottonseed	648	787	998	688	839	839
Meal, Soybean	9,361	9,608	9,321	11,295	11,345	11,520
Meal, Sunflowerseed	2,695	2,258	2,240	2,412	1,989	1,969
Other	1,297	1,042	1,241	1,160	1,283	1,292
Total	14,001	13,695	13,800	15,555	15,456	15,620
SME						
Meal, Cottonseed	525	638	809	557	680	680
Meal, Soybean	9,359	9,606	9,319	11,295	11,345	11,520
Meal, Sunflowerseed	1,798	1,506	1,494	1,609	1,327	1,313
Other	871	757	918	869	943	950
Total	12,552	12,506	12,539	14,330	14,295	14,463
Imports						
Meal, Cottonseed	35	57	12	38	38	38
Meal, Soybean	6,050	6,230	5,317	8,451	7,085	7,085
Meal, Sunflowerseed	1,027	992	1,047	1,497	1,025	1,110
Other	873	828	700	713	796	805
Total	7,985	8,107	7,076	10,699	8,944	9,038
Imports						
Oil, Palm	2,912	3,277	3,292	3,663	3,570	3,570
Oil, Rapeseed	84	81	112	86	110	110
Oil, Soybean	613	540	512	149	546	546
Oil, Sunflowerseed	2,470	2,880	3,591	3,351	2,937	3,037
Other	233	227	253	220	214	224
Total	6,312	7,005	7,760	7,469	7,377	7,487
Industrial Dom. Cons.						
Oil, Palm	180	225	245	240	240	240
Oil, Rapeseed	10	10	25	25	25	25
Oil, Soybean	75	65	65	57	57	57
Oil, Sunflowerseed	20	20	25	25	25	25
Other	56	50	36	39	43	43
Total	341	370	396	386	390	390
Food Use Dom. Cons.						
Oil, Palm	2,160	2,366	2,567	2,641	2,795	2,810
Oil, Rapeseed	281	265	344	310	365	365
Oil, Soybean	1,072	1,114	1,088	930	1,229	1,169
Oil, Sunflowerseed	2,869	2,892	3,057	3,405	3,102	3,077
Other	658	683	738	595	672	682
Total	7,040	7,320	7,794	7,881	8,163	8,103
Domestic Consumption						
Oil, Palm	2,340	2,591	2,812	2,881	3,035	3,050
Oil, Rapeseed	291	275	369	335	390	390
Oil, Soybean	1,172	1,189	1,158	992	1,291	1,231
Oil, Sunflowerseed	2,899	2,922	3,097	3,445	3,142	3,117
Other	730	749	791	649	730	740
Total	7,432	7,726	8,227	8,302	8,588	8,528

Middle East includes Bahrain, Iran, Iraq, Israel, Jordan, Kuwait, Lebanon, Oman, Qatar, Saudi Arabia, Syria, Turkey, United Arab Emirates, and Yemen. SME - 44 Percent Protein Soybean Meal Equivalent

Table 26: European Union Oilseeds and Products Supply and Distribution

Thousand Metric Tons

	2020/21	2021/22	2022/23	2023/24	Oct 2024/25	Nov 2024/25
Production						
Oilseed, Rapeseed	16,732	17,353	19,612	19,934	17,450	17,350
Oilseed, Soybean	2,600	2,833	2,610	2,947	2,900	2,900
Oilseed, Sunflowerseed	8,897	10,328	9,386	10,125	9,500	9,430
Other	542	534	526	334	423	403
Total	28,771	31,048	32,134	33,340	30,273	30,083
Domestic Consumption						
Meal, Rapeseed	12,500	12,300	13,800	13,900	13,850	13,850
Meal, Soybean	28,342	27,742	26,742	26,942	27,342	27,442
Meal, Sunflowerseed	6,260	7,160	6,860	7,010	6,410	6,410
Other	1,916	2,058	2,307	1,908	1,887	1,887
Total	49,018	49,260	49,709	49,760	49,489	49,589
SME						
Meal, Rapeseed	8,894	8,751	9,819	9,890	9,854	9,854
Meal, Soybean	28,300	27,700	26,700	26,900	27,300	27,400
Meal, Sunflowerseed	4,135	4,736	4,536	4,636	4,235	4,235
Other	1,062	1,161	1,256	1,054	1,062	1,062
Total	42,391	42,348	42,311	42,480	42,451	42,551
Imports						
Meal, Rapeseed	467	576	843	814	1,000	1,000
Meal, Soybean	16,504	16,536	16,012	16,500	16,200	16,200
Meal, Sunflowerseed	2,571	2,563	2,756	3,100	2,300	2,400
Other	1,668	1,767	1,971	1,643	1,598	1,598
Total	21,210	21,442	21,582	22,057	21,098	21,198
Industrial Dom. Cons.						
Oil, Palm	3,860	2,700	2,200	1,800	1,750	1,750
Oil, Rapeseed	6,675	6,600	6,975	7,050	6,950	6,950
Oil, Soybean	1,100	1,100	1,100	1,100	1,100	1,100
Oil, Sunflowerseed	500	525	550	550	550	550
Other	585	587	555	555	535	535
Total	12,720	11,512	11,380	11,055	10,885	10,885
Food Use Dom. Cons.						
Oil, Palm	2,300	1,950	2,050	1,900	2,000	2,000
Oil, Rapeseed	2,400	2,600	2,900	2,850	2,800	2,800
Oil, Soybean	1,275	1,150	1,250	1,425	1,325	1,375
Oil, Sunflowerseed	4,300	4,750	4,650	4,850	4,750	4,750
Other	2,247	2,189	1,897	1,875	2,045	2,025
Total	12,522	12,639	12,747	12,900	12,920	12,950
Domestic Consumption						
Oil, Palm	6,360	4,850	4,400	3,830	3,850	3,850
Oil, Rapeseed	9,125	9,250	9,925	9,950	9,800	9,800
Oil, Soybean	2,430	2,305	2,405	2,580	2,480	2,530
Oil, Sunflowerseed	4,813	5,288	5,213	5,413	5,313	5,313
Other	2,845	2,789	2,457	2,430	2,580	2,560
Total	25,573	24,482	24,400	24,203	24,023	24,053
Imports						
Oil, Palm	5,951	5,015	4,548	3,800	4,000	4,000
Oil, Rapeseed	314	593	402	463	450	450
Oil, Soybean	493	459	623	575	525	525
Oil, Sunflowerseed	1,599	2,178	2,103	2,800	2,000	2,000
Other	1,570	1,575	1,477	1,557	1,390	1,405
Total	9,927	9,820	9,153	9,195	8,365	8,380

European Union includes Austria, Belgium, Bulgaria, Croatia, Cyprus, Czech Republic, Denmark, Estonia, Finland, France, Germany, Greece, Hungary, Ireland, Italy, Latvia, Lithuania, Luxembourg, Malta, Netherlands, Poland, Portugal, Romania, Slovakia, Slovenia, Spain, and Sweden.

Table 27: China Oilseeds and Products Supply and Distribution

Thousand Metric Tons

	2020/21	2021/22	2022/23	2023/24	Oct 2024/25	Nov 2024/25
Production						
Oilseed, Peanut	17,993	18,308	18,330	19,217	19,000	19,000
Oilseed, Rapeseed	14,049	14,714	15,531	16,321	15,800	15,800
Oilseed, Soybean	19,602	16,395	20,284	20,840	20,700	20,700
Oilseed, Sunflowerseed	2,570	2,154	1,741	1,983	1,750	1,750
Other	11,482	10,463	12,051	10,718	11,051	11,051
Total	65,696	62,034	67,937	69,079	68,301	68,301
Imports						
Oilseed, Peanut	1,373	785	940	774	700	700
Oilseed, Rapeseed	2,795	1,657	5,335	5,486	3,400	3,400
Oilseed, Soybean	99,740	90,297	104,500	112,000	109,000	109,000
Oilseed, Sunflowerseed	137	157	268	183	200	200
Other	72	297	665	690	500	500
Total	104,117	93,193	111,708	119,133	113,800	113,800
Domestic Consumption						
Meal, Peanut	4,090	4,077	4,005	3,973	3,958	3,958
Meal, Rapeseed	11,404	11,951	12,923	14,519	14,497	14,497
Meal, Soybean	74,425	71,100	75,050	77,150	80,550	80,550
Other	10,225	9,895	11,429	11,270	11,305	11,305
Total	100,144	97,023	103,407	106,912	110,310	110,310
SME						
Meal, Peanut	4,597	4,583	4,502	4,466	4,449	4,449
Meal, Rapeseed	7,776	8,165	8,857	9,992	9,973	9,973
Meal, Soybean	73,300	70,000	73,900	76,000	79,400	79,400
Other	8,680	8,426	9,212	9,407	9,262	9,262
Total	94,353	91,174	96,470	99,865	103,084	103,084
Food Use Dom. Cons.						
Oil, Palm	4,200	3,300	3,200	2,850	3,600	3,700
Oil, Peanut	3,567	3,323	3,418	3,373	3,344	3,344
Oil, Rapeseed	8,000	8,500	8,900	9,750	9,700	9,600
Oil, Soybean	17,800	17,100	17,000	18,150	18,800	18,800
Oil, Sunflowerseed	2,067	955	1,803	1,419	1,212	1,212
Other	1,640	1,646	1,705	1,579	1,601	1,616
Total	37,274	34,824	36,026	37,121	38,257	38,272
Domestic Consumption						
Oil, Palm	6,550	5,100	5,600	4,950	5,700	5,800
Oil, Peanut	3,567	3,323	3,418	3,373	3,344	3,344
Oil, Rapeseed	8,000	8,500	8,900	9,750	9,700	9,600
Oil, Soybean	17,800	17,100	17,000	18,150	18,800	18,800
Oil, Sunflowerseed	2,067	955	1,803	1,419	1,212	1,212
Other	2,278	2,169	2,452	2,261	2,351	2,366
Total	40,262	37,147	39,173	39,903	41,107	41,122
Imports						
Oil, Palm	6,818	4,387	6,190	4,377	5,900	5,900
Oil, Peanut	346	166	292	247	250	250
Oil, Rapeseed	2,365	973	1,998	2,040	1,900	1,900
Oil, Soybean	1,221	291	395	381	400	400
Oil, Sunflowerseed	1,640	513	1,555	1,207	1,000	1,000
Other	862	798	967	891	980	995
Total	13,252	7,128	11,397	9,143	10,430	10,445

SME - 44 Percent Protein Soybean Meal Equivalent

Table 28: India Oilseeds and Products Supply and Distribution

Thousand Metric Tons

	2020/21	2021/22	2022/23	2023/24	Oct 2024/25	Nov 2024/25
Production						
Oilseed, Cottonseed	11,675	10,316	11,166	10,783	10,189	10,189
Oilseed, Peanut	7,300	8,700	6,300	6,000	7,100	7,100
Oilseed, Rapeseed	8,600	11,100	11,200	11,600	12,100	12,100
Oilseed, Soybean	10,456	11,889	12,411	11,875	12,800	12,582
Oilseed, Sunflowerseed	150	140	215	112	113	113
Other	1,003	1,021	1,022	1,021	1,021	1,021
Total	39,184	43,166	42,314	41,391	43,323	43,105
Domestic Consumption						
Meal, Cottonseed	4,584	4,238	4,443	4,405	4,205	4,205
Meal, Rapeseed	3,650	4,375	4,350	4,515	4,860	4,860
Meal, Soybean	5,850	6,273	6,625	7,150	7,525	7,550
Other	2,445	2,348	2,176	2,115	2,284	2,234
Total	16,529	17,234	17,594	18,185	18,874	18,849
SME						
Meal, Cottonseed	3,714	3,434	3,600	3,569	3,407	3,407
Meal, Rapeseed	2,597	3,113	3,095	3,212	3,458	3,458
Meal, Soybean	5,500	5,873	6,225	6,700	7,050	7,075
Other	2,191	2,177	2,021	1,923	2,102	2,069
Total	14,003	14,597	14,941	15,405	16,017	16,009
Food Use Dom. Cons.						
Oil, Cottonseed	1,360	1,250	1,315	1,290	1,280	1,280
Oil, Palm	8,850	7,800	8,300	8,225	9,650	9,800
Oil, Peanut	1,160	1,185	1,050	1,005	1,115	1,115
Oil, Rapeseed	2,700	3,700	3,600	3,900	4,000	4,000
Oil, Soybean	4,950	5,825	5,400	5,275	5,725	5,775
Oil, Sunflowerseed	2,250	1,900	2,750	3,525	2,125	2,075
Other	400	375	400	416	415	415
Total	21,670	22,035	22,815	23,636	24,310	24,460
Domestic Consumption						
Oil, Cottonseed	1,408	1,295	1,361	1,345	1,320	1,320
Oil, Palm	9,225	8,150	8,900	8,875	10,300	10,450
Oil, Peanut	1,170	1,195	1,060	1,015	1,125	1,125
Oil, Rapeseed	2,780	3,780	3,680	3,980	4,080	4,080
Oil, Soybean	4,950	5,825	5,400	5,275	5,725	5,775
Oil, Sunflowerseed	2,250	1,900	2,750	3,525	2,125	2,075
Other	747	674	710	736	790	790
Total	22,530	22,819	23,861	24,751	25,465	25,615
Imports						
Oil, Cottonseed	8	4	1	3	5	5
Oil, Palm	8,411	8,004	10,045	8,800	9,900	9,900
Oil, Peanut	0	0	0	0	0	0
Oil, Rapeseed	25	34	6	5	5	5
Oil, Soybean	3,251	4,231	3,968	3,200	3,500	3,600
Oil, Sunflowerseed	1,958	1,956	2,988	3,500	1,850	1,800
Other	157	80	111	135	190	190
Total	13,810	14,309	17,119	15,643	15,450	15,500

SME - 44 Percent Protein Soybean Meal Equivalent