

# Umatilla National Wildlife Refuge

## *Hunting Regulations — McCormack Unit*



**Hunting is permitted in accordance with all applicable state regulations (see [www.dfw.state.or.us/resources/](http://www.dfw.state.or.us/resources/)) and special refuge regulations.**

***Open to Hunting*** – Goose, duck, coot, snipe, upland game birds (excluding turkey), and deer.

***Deer Hunting*** – Deer hunting is only allowed with Umatilla NWR special permits and maps issued by the Oregon Department of Fish and Wildlife (ODFW). These permits specify weapon type, dates, and other information.

***Closed to Hunting*** – All other species of wildlife not listed are protected. Protected species include, but are not limited to, elk, bear, snakes, turkey, crow, coyote, porcupine, and rabbits.

***Days*** – Hunting waterfowl and upland game birds is allowed on Wednesdays, Saturdays, Sundays, Thanksgiving Day, and New Year's Day (not when observed) only during the main state waterfowl season (excludes deer permits). November 18 is reserved exclusively for licensed youth hunters up to 17 years old. Permit holders for Veterans Day (November 11) must be active duty service members or veterans; others in the hunting party do not have to be a veteran or active military.

***Hours*** – The refuge is open for hunting access from 1-1/2 hours before legal hunting time to 1-1/2 hours after legal hunting time. Upland game birds may only be hunted on refuge waterfowl hunting days from 12:00 noon until the close of state hunting hours.

***Firearms & Ammunition*** – Firearms may only be discharged in accordance with FWS regulations (50 CFR 27.42) and refuge-specific regulations (50 CFR Part 32). Only shotguns are permitted for waterfowl, snipe and upland game birds. Only federally approved non-toxic shot may be used.

***General Public Entry*** – For non-hunters, the refuge is open from sunrise to sunset every day in areas open public use.

***Vehicle Travel and Parking*** – All vehicles, including bicycles, are restricted to designated motorized routes of travel and parking areas (see map). Trails lead from each parking lot to blind sites.

***Boats*** – Non-motorized watercraft (e.g., boats, float tubes) may be used to set decoys and retrieve birds. Watercraft may not be hunted from or used to access hunting locations.

***Dogs*** – Dogs must be kept on leashes, except during the lawful pursuit of game during legal seasons.

### **Hunter Check Station & Procedures**

***Fees*** – The day use fee is \$14/person. Season passes are available for \$96 (\$48 for federal lands pass holders). Senior and disabled pass holders pay \$7; all other passes holders pay \$14. There are no fees for persons 17 years old and younger.

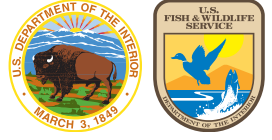
***Hunting Lotteries*** – See [www.fws.gov/mcriver/regulations/](http://www.fws.gov/mcriver/regulations/). The lottery winner must be present the day of the hunt, must have a hunting license and must hunt the entire time the blind is in use. If the lottery holder leaves, the guest(s) must leave or follow the hunting standby procedures.

***Permits*** – All hunters are required to possess a special refuge permit; permits are obtained at the Hunter Check Station prior to hunting. A maximum of 15 upland game bird permits will be available each day; upland bird permit holders are allowed one guest.

***Check Station Location and Hours*** – The Hunter Check Station is located on Paterson Ferry Road (see map) and is staffed 1-1/2 hours before legal hunting time until 8:00 a.m. and from 11:00 a.m. to 1:00 p.m.

# Umatilla National Wildlife Refuge

## *Hunting Regulations — McCormack Unit*



**Check In & Blind Selection** – Prior to hunting, all hunters must check-in at the Hunter Check Station to obtain a permit. Blind selection begins 1-1/2 hours before legal hunting time; lottery selection holders must be present at that time. After that, they will become standby hunters.

**Standby Hunting** – Standby hunters will select the remaining blind sites via a random drawing.

**Check Out** – Hunters are required to check out at the Hunter Check Station before switching blinds, hunting upland game, or leaving the refuge. If the Hunter Check Station is closed, hunters must drop their permit cards into the drop box.

**Blind Occupancy** – A maximum of 4 persons of any age are permitted per blind.

**McCormack Slough & Columbia River Blinds** – All hunting must take place from designated blind sites; hunters must remain within 100 feet of the blind or numbered stake, unless retrieving birds or setting decoys. For river blinds, if the water recedes, hunters are allowed to position directly in front of the blind or numbered stake, and the rules above will apply from that location.

**Field/Pit Blinds** – Consult with the Hunter Check Station Attendant for details. These blinds are located in agricultural areas and change according to crop management. Hunters may hunt in the blind or anywhere in the half field assigned (see map), but must maintain at least a 100-yard distance from other hunting parties. Desert hunting sites are available as free-roam access within two designated zones, #60 and #61.

**Disabled Hunter Blinds** – Blinds #13 and #C1 are designated for hunters with disabilities.

### Selected Prohibited Activities

- The use or possession of alcoholic beverages while hunting
- The use of motorized equipment, excluding wheelchairs
- Dog training
- Target shooting
- Baiting of any wildlife, trapping, or netting
- Fires, overnight camping, or parking
- Littering (including empty shotgun hulls)
- Abandoning or leaving personal property unattended
- Use of horses, ATVs and other off-road vehicles
- Commercial guiding for hunting
- Collecting of plants, animals, antlers, or other materials

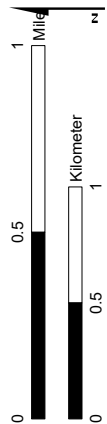
### Contact Information

Umatilla National Wildlife Refuge  
64 Maple Street  
Burbank, WA 99323  
509/546-8300; Hunter Hotline: 541/922-HUNT (4868)  
[www.fws.gov/refuge/umatilla/](http://www.fws.gov/refuge/umatilla/)

# Umatilla NWR

## McCormack Unit Hunt Map

- Hunt blind
- Hunter check station
- Parking
- Gate
- Public road
- Foot trail
- Agricultural field
- Waterfowl hunting only
- Waterfowl & upland game hunting by designated permit only
- Closed to all access
- Closed to hunting
- Deer hunting only
- Sanctuary Closure Area
- Refuge boundary



\*\* Indicates disabled hunter blind.

