




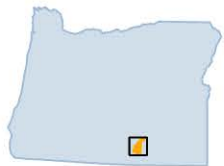


# WARNER PEAK FIRE TEMPORARY CLOSURE AREAS (until June 15, 2025)

*Hart Mountain  
National Antelope Refuge*

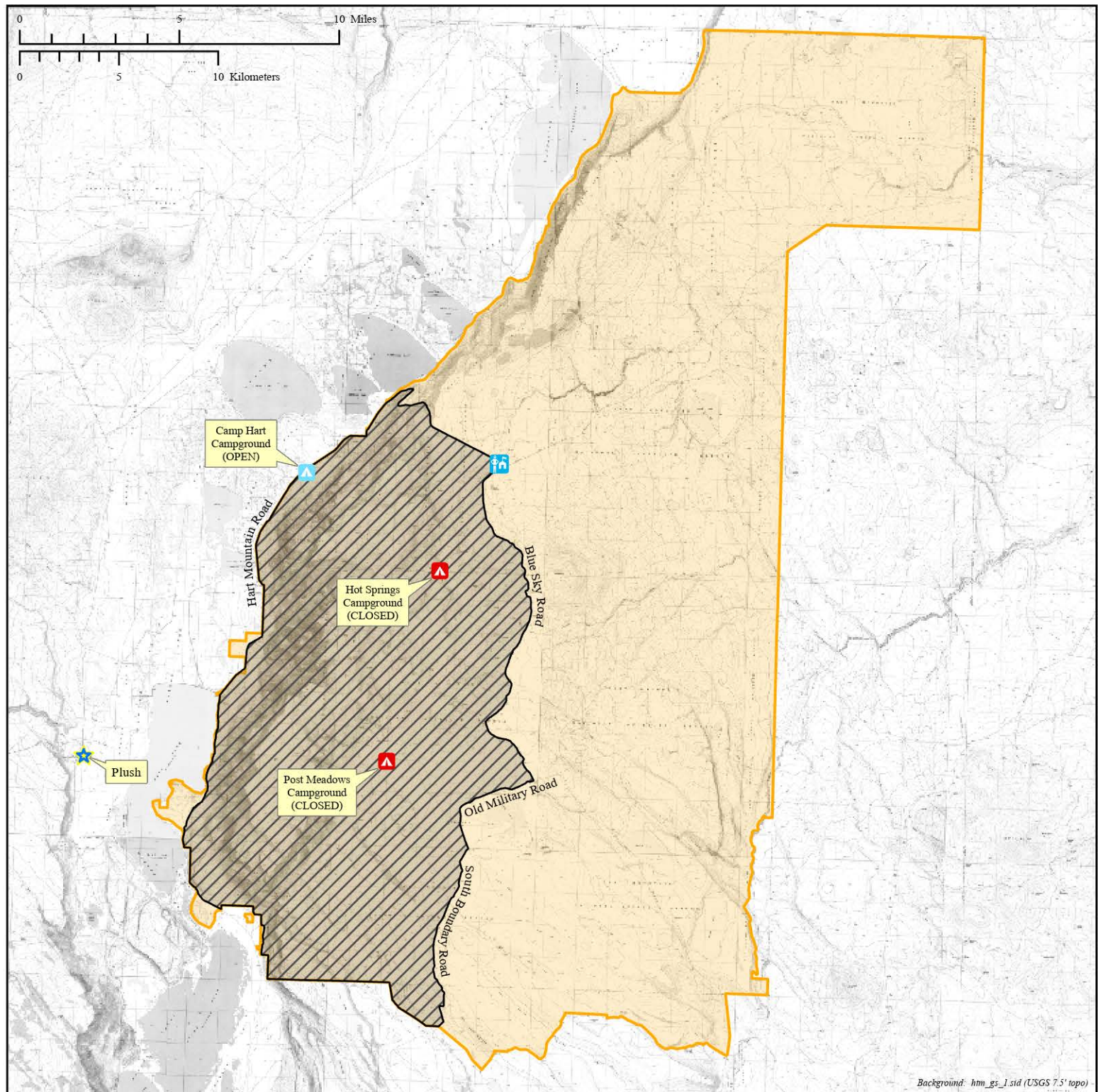
-  Temporary Closure Area
-  Refuge Boundary
-  Refuge HQ
-  Campground (Open)
-  Campground (Temporarily Closed)

U.S. DEPARTMENT OF THE INTERIOR  
U.S. Fish & Wildlife Service  
Sheldon-Hart Mountain NWR Complex  
Hart Mountain National Antelope Refuge  
Lake County, Oregon



NOTE: No warranty is made by the U.S. Fish & Wildlife Service as to the accuracy, reliability, or completeness of these data for individual or aggregate use with other data. Original data was compiled from various sources and may be updated without notification.

Layout Name: TemporaryClosureAreas\_2024-2025  
File Name: WarnerPeakFire\_2024\_TemporaryClosureAreas.aprx  
Map Date: 28-August-2024



Background: hmn\_gs\_1.sta (USGS 7.5' topo)