

Summary of CEMARS certification

TIL Logistics Group Limited

Year 1 of 3 year certificate period

TIL Logistics Group Limited meets the requirements of CEMARS® certification having measured its greenhouse gas emissions in accordance with ISO 14064-1:2006 and committed to managing and reducing its emissions in respect of the operational activities of its organisation comprising Transport Investments Limited, MOVE Logistics Limited, Southern Fleet Leasing Limited, McAuley's Transport Limited, TIL Freight Limited, Hookers Shipping Limited, Pacific Asset Leasing Limited, NZL Group Limited, Pacific Fuel Haul Limited and Specialist Lifting & Transport Limited.



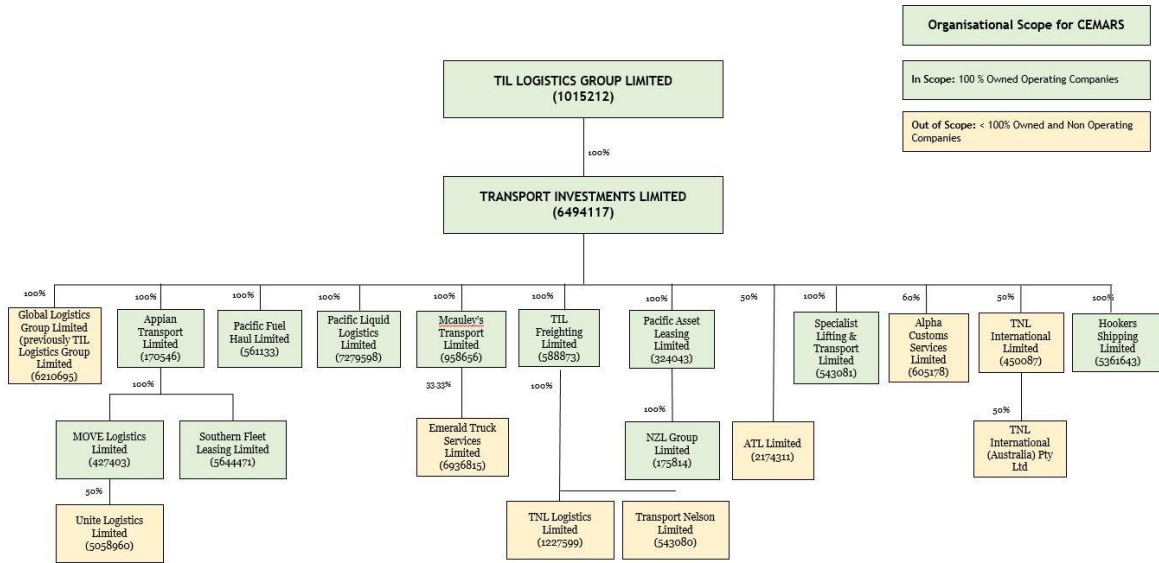
Introduction¹ – TIL Logistics Group is one of New Zealand's largest domestic freight and logistics providers, with the ability to service all customer supply chain requirements. We have a robust strategy for growth. TIL operates a nationwide network of branches, depots and warehouses, with a dedicated team of over 1,700 employees and contractors. The company owns a fleet of around 2,300 trucks, trailers, forklifts and light vehicles. It also operates one of the largest petroleum product Dangerous Goods (DG) road tanker fleets in the country. With warehousing capacity of more than 185,000 square metres, TIL has the scale and ability to service all customers' transport and logistics needs.

TIL Logistics is a founding signatory to the Climate Leaders Coalition (CLC), comprising 60 leading New Zealand businesses which have joined forces to tackle the issue of climate change in a sustainable and robust way.

The CLC, announced in July this year, aims to help New Zealand to transition to a low emissions economy, helping to create a sustainable future for our country and making it a great place to live and work. We believe this makes good sense not only for New Zealand, but for our business, shareholders, employees, the communities we live in and our stakeholders. Our business involves transporting and distribution, there is and will remain a need to move products, people and commodities, this will result in the need for various vehicles, inevitably this will have a carbon footprint, we are committed to lightening that footprint.

Boundary – Figure 1 below shows the organisational structure used for describing the organisation's greenhouse gas (GHG) emissions inventory, and what business units were included in the inventory in the context of the entire organisational profile. The Business Units in Green, being active, have been identified as being within this emissions inventory. Business units excluded from the inventory are shown in Yellow.

¹ **Disclaimer:** This Disclosure Statement is a summary of the verified information considered for certification and the certification decision. It should not be taken to represent the full submission for certification. Whilst every effort has been made to ensure that the information in this Disclosure Statement is accurate and complete, Enviro-Mark Solutions Limited does not, to the maximum extent permitted by law, give any warranty or guarantee relating to the accuracy or reliability of the information.



85669414 Updated 20190816

Figure 1: Organisational structure showing business units included and excluded.

Consolidation approach – The operational control consolidation approach has been used to account for operational emissions with reference to the methodology described in the GHG Protocol and ISO 14064-1:2006 standards.

Base year – 01/07/2018 to 30/06/2019

Measurement period – 01/07/2018 to 30/06/2019

Emissions source inclusions – The operational GHG emissions for the organisation by emissions source are shown in Figure 2 below.

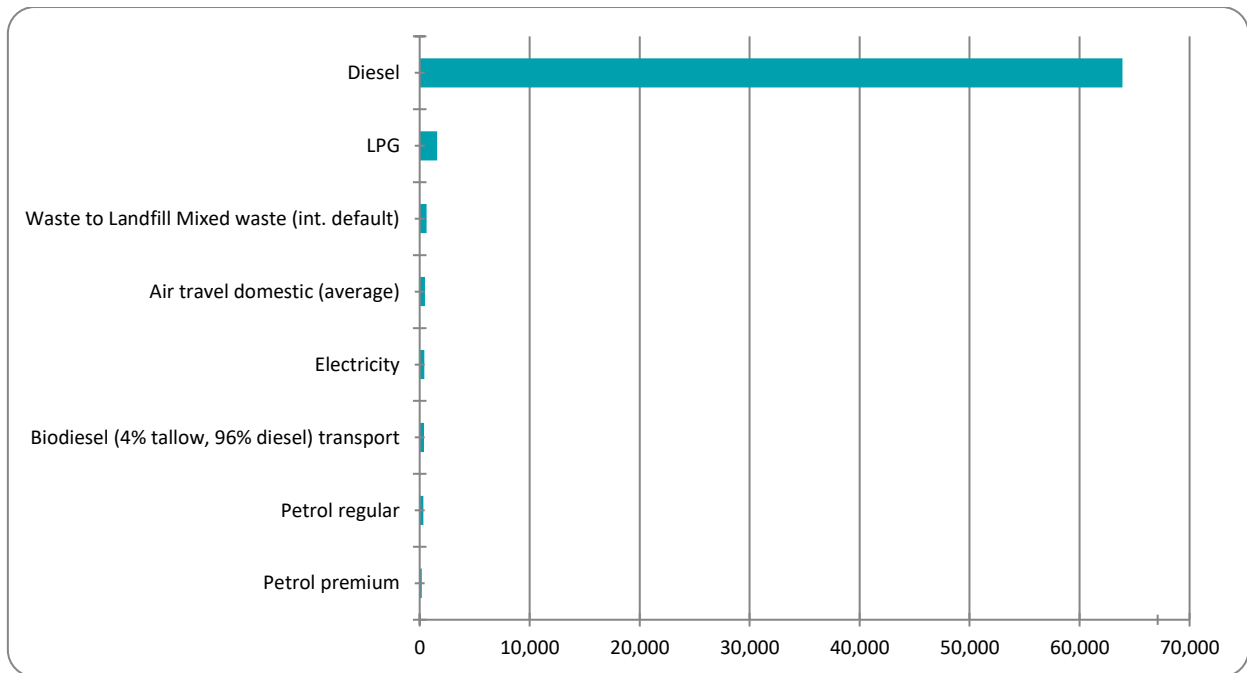


Figure 2: GHG emissions by emissions source (tCO₂e).



Summary of CEMARS certification

TIL Logistics Group Limited

Year 1 of 3 year certificate period

Emissions as tonnes of carbon dioxide equivalents (tCO₂e) for this period were:

Emissions summary by scopes		Units
Scope 1 total	66,426.77	tCO₂e
Scope 2 total	416.98	tCO₂e
Scope 3 total	1,218.04	tCO₂e
<i>Mandatory scope 3</i>	<i>1,218.04</i>	<i>tCO₂e</i>
<i>Additional scope 3</i>	<i>0.00</i>	<i>tCO₂e</i>
<i>One-time scope 3</i>	<i>0.00</i>	<i>tCO₂e</i>
Total inventory:	68,061.79	tCO₂e

Emissions source exclusions – The following emissions sources were excluded from the inventory for this measurement period:

- Freight – considered *de minimis*
- Refrigerants used in office air conditioning – considered *de minimis*
- Refrigerants used in truck air conditioning – considered *de minimis*

Emissions reduction commitments – A GHG emissions management plan and reduction targets have been developed. Projects to reduce emissions include:

- Investigate alternative fuel options for truck fleet.
- Implement enhanced monitoring and maintenance programme for plant and equipment that uses LPG.
- Investigate feasibility of alternatives to LPG, less carbon intensive fuel sources.
- Review and amend vehicle procurement strategy to give rated fuel efficiency higher priority.
- Driver behaviour courses.

Verified by – Enviro-Mark Solutions Limited

Data quality score – High

Threshold of materiality – Excluded emissions do not exceed 5% of the total footprint within the organisation boundary stated.

Level of assurance – Reasonable

Certification status – CEMARS certified organisation

Certificate number – 2019070J, Year 1 of 3 year certificate period

Valid until – 16 August 2022