

# The Largest Contiguous Land Tenement Package in Brazil's Lithium Valley

+63,000 Ha in Minas Gerais Lithium Valley district - 30KM from Sigma Lithium, Lithium Ionic & Latin Resources

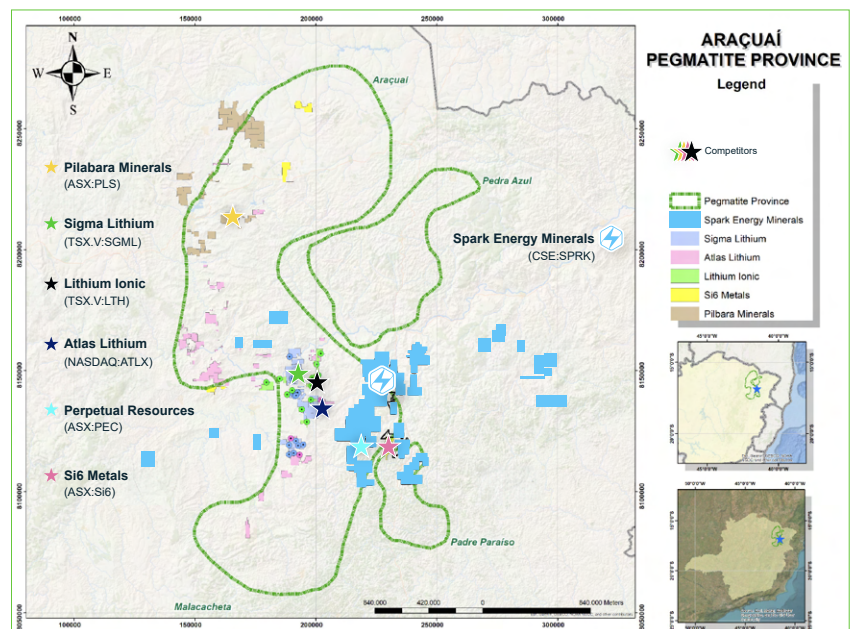


## Flagship Project

Focused on confirming spodumene pegmatite lithium potential across district-scale land package

**Prospective Geology:** Geophysical data suggests lithium-bearing pegmatites exposed in erosional windows through regolith cover.

**Untapped Potential:** Presence of spodumene particles in heavy mineral concentrates panned from streams highlight the untapped potential on Spark's property.



## Strategic Location

Proximity to established developers & producers in Minas Gerais Lithium Valley.



Pilbara Minerals Acquisition of Latin Resources' Flagship Salinas Lithium Project

Potential to become a top 10 hard rock lithium operation globally

Resource Estimate: The Salinas Lithium Project has an estimated resource of 77.7Mt @ 1.24% Li<sub>2</sub>O

Market Cap: ~\$7.95 billion



Lithium Ionic is actively moving forward with permitting for the Bandeira lithium project

Resource Estimate: The Bandeira project has a measured and indicated resource of 7.57Mt @ 1.40% Li<sub>2</sub>O, with strong growth potential

Market Cap: ~\$125 million



Sigma Lithium is one of the world's largest lithium producers

Grota do Cirilo project boasts a total resource of 45.7Mt @ 1.38% Li<sub>2</sub>O, positioning it as a world-class lithium resource

Sigma has received BNDES funding to expand its carbon-neutral production, doubling capacity from 270,000 tonnes to 520,000 tonnes per year

Market Cap: ~\$1.15 billion

## The Right Host Rock

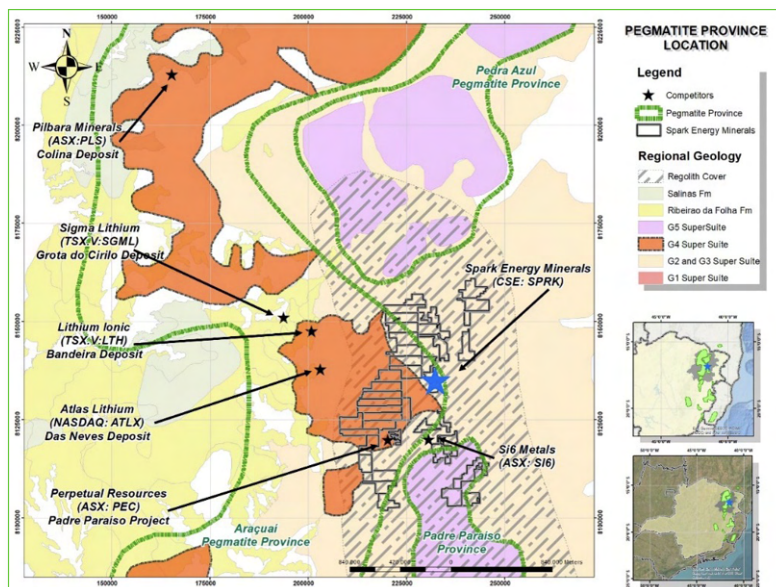
Focused on confirming spodumene pegmatite lithium potential across multiple licenses

The priority is the exploration of outcropping pegmatites across this extensive acreage, targeting Brazil's premier lithium region

Geological map that highlights the central position of the fertile G4 Granite, along with the surrounding basement schist and granite-gneiss complexes and importantly the location of shallow regolith cover.

G4 granite in Brazil is associated with lithium deposits, particularly in pegmatite intrusions near these granites. These deposits are significant for hosting lithium-rich minerals like spodumene.

It also indicates the location of shallow regolith cover, which plays a key role in the geological structure and mineral potential.



## Management Team & Advisors

### EUGENE HODGSON

President, Chair & CEO

### JOHNATHAN HILL

VP Exploration, Country Manager & Director

### CHRIS FOSTER

CFO

### MIKE STIER

Director

### ANDREW LEE SMITH, P. GEO BSC.

Chairman, Technical Advisory Board

### MICHAEL SKEAD

Technical Advisory Board

### IAN GENDALL

Technical Advisory Board

### LEONARDO SOUZA

Consulting Geologist

### PHILIPPE MARTINS

Legal Counsel

### AARON WONG

VP Corporate Development

### SHERYL DHILLON

Corporate Secretary

### CHRIS FOSTER

CFO

## Capitalization Table

CSE: [SPRK](#) | OTC: [SPARF](#) | FSE: [8PC](#)

Sept 13, 2024

Recent Trading Price

C\$0.11

Shares Outstanding

93,816,074

Market Capitalization

C\$7.5M

Scan here for more information

