

ASX ANNOUNCEMENT

2 July 2024



ANNUAL MINERAL RESOURCE AND ORE RESERVE STATEMENT

Highlights

- **Mineral Resource:**
 - Sand King Underground Resource increased 176% to 3.4M tonnes at 2.8g/t for 306k ounces, up from 110k ounces
 - Riverina Underground Resource increased 54% to 4.0M tonnes at 3.7g/t for 468k ounces, up from 303k ounces
 - Global Davyhurst Gold Project Mineral Resource Estimate of 23.3M tonnes at 2.6g/t for 1.95M ounces¹ was calculated using a \$2,400/oz gold price
- **Ore Reserves:**
 - Maiden Sand King Underground Ore Reserve of 537k tonnes at 3.2g/t for 55k ounces
 - Riverina Underground Ore Reserve increased 19% to 651k tonnes at 4.2g/t for 87k ounces at, up from 73k ounces and after mining depletion
 - Total underground Ore Reserve increased 94% to 1.2M tonnes at 3.7g/t for 142k ounces, up from 73k ounces
 - Total Ore Reserve position increased 19% to 2.2M tonnes at 2.7g/t for 190k ounces including 1.5M tonnes at 3.5g/t for 166k ounces excluding low grade and stockpiles¹
 - Reserve grade increased by 17% (excluding stockpiles and low grade)
 - Surface stockpile ounces increased 67% to 20k ounces, up from 12k ounces
 - Cut-off grades for Underground Ore Reserve are based on a A\$2,250/oz² gold price to ensure focus remains on conversion of higher margin ounces

Ora Banda Mining Limited (ASX: OBM) ("Ora Banda", "Company") is pleased to announce updated estimates for its Davyhurst Gold Project ("DGP") Mineral Resources and Ore Reserves as at 31 May 2024, as outlined in the following tables:

DAVYHURST GOLD PROJECT MINERAL RESOURCE ESTIMATE³:

PROJECT	MEASURED		INDICATED		INFERRED		TOTAL MATERIAL		
	('000t)	(g/t Au)	('000t)	(g/t Au)	('000t)	(g/t Au)	('000t)	(g/t Au)	('000oz.)
Total Project	600	1.8	14,100	2.4	8,500	3.0	23,300	2.6	1,950

¹ After mining depletion is removed from the estimate

² Sand King and Riverina Underground Ore Reserves are based on A\$2,250/oz. Waihi open pit Ore Reserve are based on A\$2,600/oz; low grade and stockpiles Ore Reserves are based on A\$3,000/oz

³ Inclusive of Ore Reserve

DAVYHURST GOLD PROJECT TOTAL ORE RESERVE ESTIMATE:

PROJECT	PROVED		PROBABLE		TOTAL MATERIAL		
	('000t)	(g/t Au)	('000t)	(g/t Au)	('000t)	(g/t Au)	('000oz.)
Mining Project	-	-	1,495	3.5	1,495	3.5	166
Low Grade & Stockpiles	600	1.1	123	1.1	723	1.1	25
TOTAL	600	1.1	1,618	3.3	2,218	2.7	191

Ora Banda's Managing Director, Luke Creagh commented:

"Our updated Resource and Reserve position is reflective of the wholesale changes Ora Banda has made as a business to target high-grade, with a plus 50% increase in Riverina Underground Resource and a 176% increase in the Sand King Underground Resource, in addition to declaring a Maiden Underground Ore Reserve at Sand King.

"Although it is still early days, we are extremely encouraged by the fact that we've been able to grow our ounce position so quickly and that we are now seeing the deposits show significant potential along strike and at depth.

"The Company will continue to allocate significant investment into exploration and resource definition drilling to continue to expand these mineralised systems to extend mine life and increase its options around an accelerated production profile in the future."

This announcement was authorised for release to the ASX by Luke Creagh, Managing Director.

For further information about Ora Banda and its projects please visit the Company's website at www.orabandamining.com.au.

Investor & Media Queries:

Luke Creagh
Managing Director
+61 8 6365 4548
admin@orabandamining.com.au

Table 1: DGP Ore Reserve by deposit

PROJECT AREA	DEPOSIT	PROVED		PROBABLE		TOTAL MATERIAL		
		('000t)	(g/t Au)	('000t)	(g/t Au)	('000t)	(g/t Au)	('000oz.)
Riverina	Riverina Underground	-	-	651	4.2	651	4.2	87
Siberia	Sand King Underground	-	-	537	3.2	537	3.2	55
UG Sub-Total		-	-	1,188	3.7	1,188	3.7	142
Davyhurst	Waihi Open Pit	-	-	307	2.4	307	2.4	24
Low Grade	All mines	-	-	123	1.1	123	1.1	4
Stockpiles	Siberia / Riverina	600	1.1	-	-	600	1.1	20
Sub-Total		600	1.1	123	1.1	1,030	1.5	48
TOTAL		600	1.1	1,311	3.5	2,217	2.7	190

Notes:

1. The table contains rounding adjustments to reflect accuracy and may not total exactly.
2. This Ore Reserve was estimated from practical mining envelopes and the application of modifying factors for mining dilution and ore loss.
3. For the open pit Ore Reserve, dilution skins were applied to the undiluted Mineral Resource estimate. The method also included internal and edge dilution resulting from forming practical mineable shapes. Dilution was incorporated in the model at the background grades estimated into the model. The average grade of dilution for Waihi was 0.16 g/t. The estimated average dilution at Waihi was estimated to be 27%. Ore loss was incurred in the Auto Stope Designer (ASD) Deswik process due to variation between mineralised lode geometry and practical dig block geometry. In addition, a nominal 5% loss was applied for further mining losses occurring through normal operations.
4. For the underground Ore Reserve, dilution skins were applied to the Mineral Resource estimate. Dilution was included at the background grade estimated into each model. The Riverina dilution is estimated to average 59% while Sand King is estimated to average 29%, reflecting mining shapes and orebody widths appropriate for each deposit.
5. The Inferred Mineral Resource within the mining envelope was considered as waste when defining limits of these envelopes; however, minor amount of inferred material was included within the Riverina Underground and Sand King Underground mine plan due to practical mining geometries and orebody characteristics.
6. The Waihi open pit Ore Reserve was primarily estimated using a cut-off grade of 1.2 g/t based on a gold price of A\$2,600/oz. Low Grade reserve was based on A\$3,000/oz. Costs used in the cut-off grade calculation allow for ore transport, processing, site overheads and selling costs as well as a historical global process recovery of 92%.
7. The Ore Reserve is inclusive of surface stockpiles above cut-off. All surface stockpiles were classified as Proved.
8. All low grade material is in situ.
9. The Underground Ore Reserve was estimated using a cut-off grade of 2.5 g/t Au based on a gold price of A\$2,250/oz, stopes were further spatially optimised. Costs used in the cut-off grade calculation allow for ore transport, processing, site overheads and selling costs as well as process recovery specific to the location. Process recoveries range for the project were estimated to be 87% or above, based on recent metallurgical test work.
10. Inferred material within total Underground Ore Reserve equates to 24,250t at a grade of 4.5g/t. This material is included at the edges of the mining envelope and equate to 2.5% of the Ore Reserve inventories.
11. Costs were derived from the FY25 budget estimate including underground contract pricing current at the date of this Ore Reserve and budget level contract pricing for Waihi. Unit costs for haulage, processing and site overheads were estimated based on scheduled process plant throughput of material above the economic cut-off grade. Full utilisation of process capacity is reliant on realising expected conversion of further Mineral Resource to Ore Reserve.

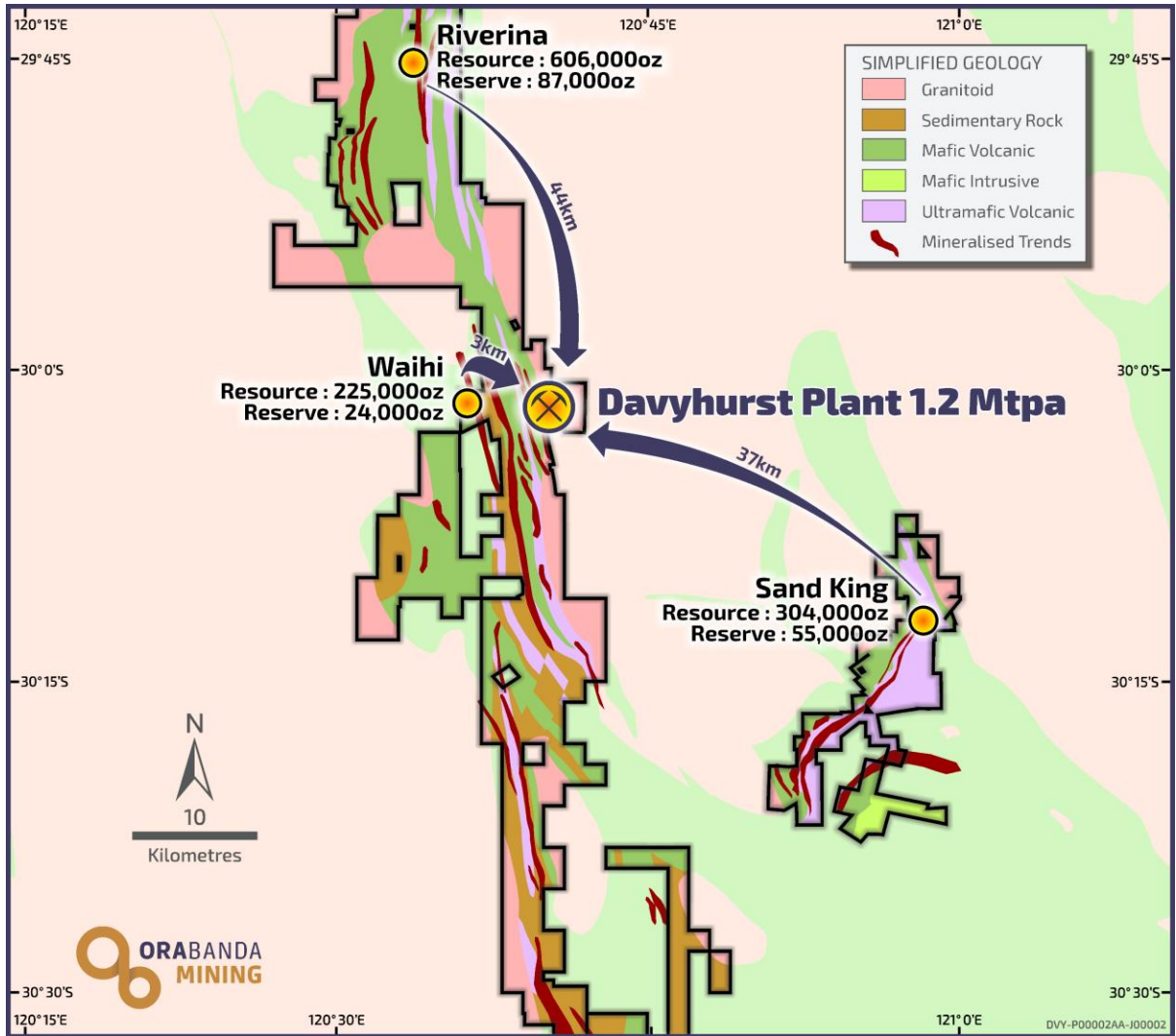


Figure 1 - Deposit Locations

Mineral Resources

Mineral Resource Estimation: Summary Information as required under Australian Securities Exchange (ASX) Listing Rule 5.8.1 follows and see Appendix 1.

The Mineral Resource Statement for Riverina Area, British Lion, Silver Tongue, Forehand, Sand King, Missouri, Waihi and Callion is reported according to the Australasian Code for Reporting of Exploration Results, Mineral Resources and Ore Reserves (the JORC Code) 2012 edition. Table 2 summarises the Mineral Resources which were considered for conversion to Ore Reserves. The full Mineral Resource Statement is detailed in Appendix 2.

The DGP Mineral Resource Estimate totals 1.95M ounces, compared to 1.8M ounces in FY23.

Significant additions to the DGP Global Mineral Resource Estimate come from Riverina Underground and Sand King Underground, both of which are detailed in this release. Riverina Underground Resource increased by 54% to 468,000 ounces and Sand King Underground Resource increased by 176% to 304,000 ounces.

Missouri Open Pit Mineral Resources are removed from the statement as the remnant resource is small and there is currently no intention to continue with open pit mining. Remaining Underground Resources are 89,000 ounces, down slightly from 93,000 ounces previously reported.

Sand King Open Pit Mineral Resources were depleted for open pit mining which ceased on 10 January 2024. As at Missouri, Sand King remaining Open Pit Resources have been removed from the statement as they are small and there is no intention to open pit mine. The Sand King Underground Mineral Resource is updated and reported in this release. Underground Resources have increased by 176% to 304,000 ounces, up from 110,000 ounces.

Waihi Open Pit Resources are unchanged from last year.

All Measured and Indicated Open Pit Mineral Resources within the pit envelopes were included in the Probable Ore Reserve estimate, where the Resource exceeded the economic cut-off grade, following the application of mining dilution and ore loss modifying factors. Any Inferred Mineral Resource contained within the optimised pit envelopes was treated as waste with zero grade. At Riverina, Measured and Indicated Underground Mineral Resources, outside the open pit envelope, were included in the probable Ore Reserve estimate where the Resource exceeded the economic cut-off grade, following the application of mining dilution and ore loss modifying factors. At Sand King all Measured and Indicated Underground Mineral Resources below 350RL (base of current mined open pit) were included in the probable Ore Reserve estimate where the Resource exceeded the economic cut-off grade, following the application of mining dilution and ore loss modifying factors.

Existing surface stockpiles are not included in the Mineral Resources.

Table 2: Mineral Resource Estimates from which Reserves are estimated

PROJECT	DEPOSIT	MEASURED		INDICATED		INFERRED		TOTAL MATERIAL		
		('000t)	(g/t Au)	('000t)	(g/t Au)	('000t)	(g/t Au)	('000t)	(g/t Au)	('000oz.)
RIVERINA	Open Pit	476	1.7	2,118	1.6	117	1.5	2,711	1.6	138
	Underground	24	3.8	1,641	3.8	2,294	3.6	3,959	3.7	468
	TOTAL	500	1.8	3,759	2.6	2,411	3.5	6,670	2.8	606
SAND KING	Open Pit	-	-	-	-	-	-	-	-	-
	Underground	113	1.9	1,444	2.7	1,858	2.9	3,415	2.8	304
	TOTAL	113	1.9	1,444	2.7	1,858	2.9	3,415	2.8	304
	SIBERIA SUBTOTAL	113	1.9	1,852	2.9	2,444	3.0	4,409	2.9	415
MISSOURI	Open Pit	-	-	-	-	-	-	-	-	-
	Underground	-	-	408	3.5	586	3.4	994	3.4	110
	TOTAL	-	-	408	3.5	586	3.4	994	3.4	110
WAIHI	Open Pit	-	-	2,057	2.3	95	2.0	2,152	2.3	157
	Underground	-	-	278	3.6	324	3.5	602	3.5	68
	TOTAL	-	-	2,335	2.5	419	3.5	2,754	2.5	225
COMBINED TOTAL		600	1.9	7,900	2.6	5,300	3.2	13,800	2.8	1,200

Notes

1. The Riverina, Sand King, Missouri and Waihi Mineral Resources have been updated in accordance with all relevant aspects of the JORC code 2012, and initially released to the market on 2 December 2019, 26 May 2020 & 16 February 2023 (Riverina), 2 December 2019 & 1 August 2022 (Sand King), 15 December 2016 and 26 May 2020 (Missouri) and 4 February 2020 & 26 October 2023 (Waihi). The Company confirms it is not aware of any new information or data that materially affects the information included in the relevant announcement, and all material assumptions and technical parameters underpinning the estimates continue to apply and have not materially changed.
2. Updated information on Riverina and Sand King are included in this release.

3. *The Riverina and Waihi Open Pit Mineral Resource Estimates are reported within a A\$2,400/oz pit shell above 0.5g/t. Waihi and Missouri Underground Mineral Resource Estimates are reported from fresh material outside the A\$2,400 pit shell and above 2.0 g/t. Riverina Underground Mineral Resource Estimates are reported from fresh material outside the A\$2,400 pit shell within Mine Stop Optimised shapes of 10m x 10m x 1.6m minimum width at a diluted cut-off of 1.3g/t. Sand King Underground Mineral Resource Estimates are reported from fresh material below 350mRL (base of mined open pit) within Mine Stop Optimised shapes of 10m x 10m x 1.6m minimum width at a diluted cut-off of 0.8 g/t.*
4. *Resources are inclusive of in-situ Ore Reserves and are exclusive of surface stockpiles.*
5. *The values in the above table have been rounded.*

Open Pit Ore Reserve

Ore Reserve Estimation: Summary Information as required under Australian Securities Exchange (ASX) Listing Rule 5.9.1.

Material Assumptions and Outcomes, Criteria for Classification

The Ore Reserve was estimated from the relevant Mineral Resource estimates referred to in this announcement. These Mineral Resources were depleted to 31 May 2024.

The Ore Reserve was generated from design studies using current costs as well as geotechnical, dilution and recovery parameters.

Costs were derived from the FY25 budget process and recent budget level contract pricing specific to the Waihi open pit. Unit costs for haulage, processing and site overheads were estimated based on scheduled process plant throughput using material above the economic cut-off grade.

The open pit Ore Reserve was estimated using a gold price of A\$2,600/oz. Low Grade Ore and Stockpiles were incorporated based on a gold price of A\$3,000/oz.

The Ore Reserve inventories form the basis of a profitable growth strategy for the Company and mine plans target a cost of circa A\$2,600/oz providing solid cashflow opportunities. Cost increases have been taken into account for the Ore Reserve conversion which reflect changes in the prevailing market conditions for the Western Australian mining industry.

Mineral Resource updates and mining depletions are factored in alongside operational efficiencies to form a robust business case on which to build a strong future for Ora Banda. The Mineral Resource of 1.2M ounces upon which the Ore Reserve Estimate is based also provides extensive future organic growth opportunities for the Company.

No Measured economic Mineral Resource occurs within the Waihi mining envelope. All Indicated economic Mineral Resource within the mining envelope was classified as Probable within the open pit Ore Reserve following the application of modifying factors. All surface stockpiles above the economic cut-off were classified as Proved.

Dilution parameters were validated through mining reconciliations and updated Mineral Resource estimates. All resource models were sub-celled Ordinary Kriged models. The dilution skin method was used to reflect the selective mining method used at DGP.

Process recoveries were based on recent operational performance of the Davyhurst process plant.

Stockpile inventories consist of ROM stocks and low-grade stocks mined under ownership of Ora Banda as of 31 May 2024 and above the economic cut-off grade. This varies based on location and material type with the lowest grade being 0.7 g/t for crushed material currently adjacent to the processing plant.

Mining Method

The Waihi deposit will be mined by open pit methods using selective mining techniques. Ore and waste will be mined using a conventional mining fleet, with ore mining directly supervised by Ora Banda personnel. 120 tonne class excavators and 90 tonne dump trucks will be used and this mining approach. This mining approach was successfully used for the load and haul of ore and waste on other Ora Banda open pit projects. Drill and blast is carried out using conventional diesel hydraulic blasthole drills and blasting practices, typical of the West Australian Goldfields. Excavation of tailings will be by conventional load and haul fleet in combination with swamp dozer, a technique used at similar operations.

Processing Method

The process for treating ore at the DGP is conventional CIL with some gold recovered via gravity circuit. This is a standard gold processing flowsheet used throughout the industry for this style of mineralisation. The process plant has been successfully operated to date and currently has a nominal throughput rate of 1.2 Mtpa based on a grind size of 106 µm. Based on year to date mill performance for FY24 the global average process recovery ≈ 92%.

Cut-off Grades

The cut-off grade allows for ore haulage, crusher loading, processing, site G&A and corporate overhead contributions. Standard state royalties and third party royalties are included. The cut-off grade for Waihi is estimated to be 1.2 g/t. The cut-off grade for Low Grade and Surface stockpiles is estimated to be 0.8 g/t

Estimation Methodology, and Modifying Factors

Dilution modelling for open pit Reserves are completed using Auto Stope Designer (ASD) functionality in Deswik™ software. Mineable “stope” shapes are created to simulate practical dig blocks. Dilution skins are added to both hanging wall and footwall of the mineralisation and internal and edge dilution is included resulting from forming practical mineable shapes. The ASD optimisation shapes with a cut-off grade below 1.2 g/t and above 0.8 g/t are classified as Low Grade.

A minimum ore mining width of 1.5 m is applied in the dilution modelling process. A 0.5 m dilution skin is applied both hanging wall and footwall at Waihi for all of weathering classifications. The average dilution is estimated to be 27% at Waihi. The dilution parameters were determined from operational performance.

Background grades were estimated into the model and were included in the dilution modelling. Dilution grades were 0.16 g/t for Waihi.

Ore loss has been applied in the ASD process as a result of the variation between mineralised lode geometry and dig block geometry. In addition, a nominal 5% loss is applied for further mining losses occurring through normal operations.

Pit Optimisation

Pit optimisations using Whittle or similar software were carried as part of previous studies to inform pit design and is still considered a reasonable representation of the economic envelope. Further validation of each project's economics was based on ultimate pit designs achieving the target cash costs described above. This approach was adopted to account for the specific characteristics of each pit, creating more practical mining envelopes that account for more accurate minimum mining widths, access requirements and material management.

Pit Design

The pit design for Waihi was informed by previous optimisation and assessment of the local conditions and features, as well as current geotechnical assessments. The economics of all pits were validated against the commercial parameters in a project evaluation cash flow model, which considered project phasing, stockpiling, project capital and the impact of fixed costs. The cash flow modelling was based on a gold price of A\$3,000/oz. All pits demonstrated a positive net cash flow with acceptable returns.

The ultimate pits for Waihi is shown in Figure 2

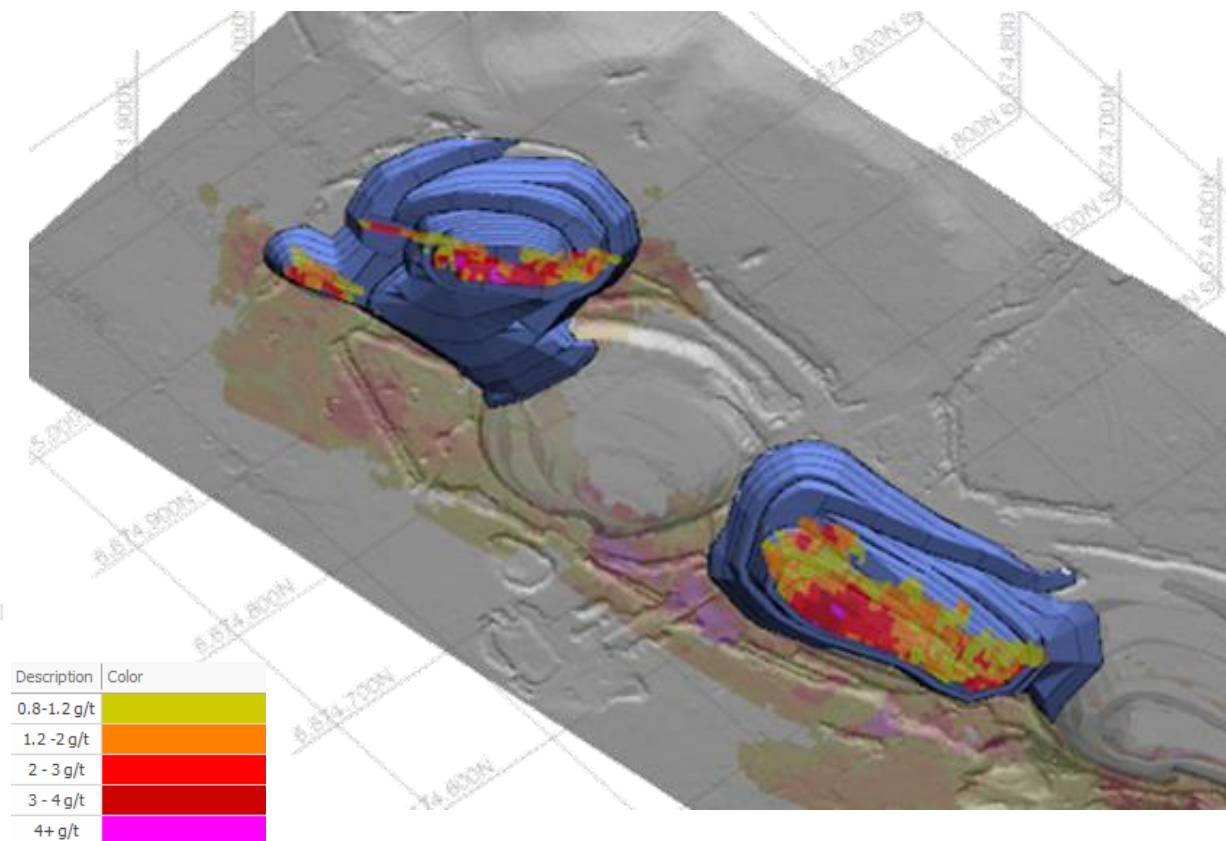


Figure 2 - Waihi open pit designs showing diluted block model >0.8gpt

Open Pit Mine Schedule.

The project comprises the Central Pit and North Pit. Both pits are currently backfilled with tailings from an earlier mining episode. The removal and disposal of tails formed part of the operational considerations and costing. The Central pit will be prioritised in the first 3 months to enable regulation of the tailings movement and accelerate ore delivery to the ROM. Management of the

tailings handling, deposition and sequencing will be an important consideration for the project. The Waihi pit will be mined over a period of approximately nine months.

Underground Ore Reserve

Riverina Underground

The Maiden Ore Reserve for Riverina Underground was first announced on 16 February 2023 and totalled 530,000 tonnes at 4.3g/t for 73,000 ounces. Underground operations produced 136,551 tonnes at 3.1g/t for 13,734 ounces, predominantly through ore development during the ramp up period.

Material Assumptions and Outcomes, Criteria for Classification

The Ore Reserve was derived from technical studies and data gained from the recent underground mining at Riverina, incorporating project-specific costs as well as geotechnical analysis, dilution and recovery parameters and is based on the current 2024 Mineral Resource estimate. Processing parameters were based on recent plant performance and test work that has been combined with historical treatment records. Hydrogeological conditions were determined from recent mining of the Riverina.

Costs were derived from the FY25 budget estimate including contract pricing current at the date of this Ore Reserve. Unit costs for mining were estimated based on fully resourced contracted scope of work reconciled against actuals. Unit costs for haulage, processing and site overheads were estimated based on full utilisation of process plant capacity using material above the economic cut-off grade. Full utilisation of process capacity is reliant on conversion of inferred material.

The Riverina Underground Ore Reserve was estimated using a gold price of A\$2,250/oz.

The dilution skin method was employed to reflect the selective mining method proposed for Riverina Underground. Dilution parameters were based on a geotechnical assessment of the expected mining environment. A cut off grade of 2.5 g/t was applied to determine economic mining envelopes, further spatial optimisation was done to ensure all economic ounces are included. Costs derived from the FY25 budget including contract pricing current at the time were used to validate the Ore Reserve.

Mining extraction ratios for the underground Ore Reserve are dependent upon the dimensions and spacing of pillars throughout the orebody. The Riverina mine design assumes 40m open stopes (along strike) and pillars of 5m by 16.5m, which equates to 89% extraction ratio (mining recovery). 40m stope strike extents are considered a practical distance over which to successfully operate remote loaders to recover ore from open stopes. An additional 5% ore loss was also included for operational losses. The overall stope recovery was estimated to be 84%.

Mining Method

The underground mine design is premised on a conventional longhole open stoping mining method, commonly used in the Western Australian Goldfields.

Mining equipment is mechanised, with equipment that includes electric-hydraulic drills for development and production, and rubber tyred loaders and trucks for load and haul activities. Production loading incorporates tele-remote loading for non-entry mining stopes.

Based on the geotechnical assessment, which identified good ground conditions and low stress environment, as would be expected at the shallow mining depths planned, no stope backfill is contemplated.

Cut-off Grades

Cut-off grades for the Riverina Underground Ore Reserve was estimated to be 2.5g/t for production stoping ore. The cut-off grade calculation was estimated at a gold price of A\$2,250/oz, and is inclusive of mining, transport, processing, overheads and selling costs. A cut-off grade of 1.4 g/t was applied to the underground development based on the incremental cost of developing hauling and processing of the ore.

Processing Method

The process for treating ore at the DGP is conventional CIL with some gold recovered via gravity circuit. This is a standard gold processing flowsheet used throughout the industry for this style of mineralisation. The process plant has a nominal throughput rate of 1.2 Mtpa based on a grind size of 106 µm. The process plant has been successfully operated and further operational improvements are proposed. The processing recovery applied to Riverina Underground was 88% and was based on recent metallurgical test work.

Estimation Methodology, and Modifying Factors

The ore drive width is designed at 4.5m allowing access for larger mechanised mining equipment. Split firing within the 4.5m wide ore drives will be undertaken as part of the development cycle. Given the nature of the mineralisation, it is expected this practice will reduce dilution significantly.

Given the narrow vein nature of the mineralisation, the global dilution, inclusive of stoping and ore drive development, was estimated to be 59% of material. Dilution being all included material less than 0.9 g/t.

Delineation of economic stoping areas was completed using Deswik™ software. Mineable “stope” shapes were created to simulate fully diluted stope blocks. The optimisation field used a cut-off grade of 2.5 g/t, spatial optimisation and incremental cut-off grades used to ensure all economic ounces are included.

A minimum stope mining width of 1.6 m was applied in the dilution modelling process, with an additional 0.6 m dilution skin applied to all valid stope shapes (0.3m hanging wall and 0.3m footwall). Therefore, all stoping analytics have been completed on a minimum mining width including dilution of 2.2m wide. In addition, a nominal provision for unplanned dilution of 5% was also included as a contingency to all stoping panels.

Background grades were estimated into the model and were included in the dilution modelling. Dilution grades varied between zero and 0.5 g/t depending on the nature of the alteration halo. The global average grade of dilution was estimated to be 0.23 g/t. Dilution being all included material less than 0.9 g/t.

Inferred material was not considered in defining the stoping envelopes; however, due to practical mining geometries a small portion of Inferred material is included within the Underground Ore Reserve. This material is included at the edges of the mining envelope and equate to approximately 2.7% of the Riverina Underground Ore Reserve inventories. This material is not considered material to the economics of the project.

Mine Design

The mine design for the Riverina underground consists of a main access portal and primary return ventilation rise. Both are located in the fresh rock portion of the existing Riverina pit.

The decline is 5.5 m wide x 5.7 m high with a typical gradient of 1:7. Ore drives are designed to be 4.5 m wide x 4.5 m high. The average floor to floor slope distance between levels is set at 21m with an average stope panel height of approximately 16.5m.

The economic viability of the Riverina Underground was confirmed using current commercial parameters in a project evaluation cash flow model. This model also considered project phasing, stockpiling, project capital and the effect of fixed costs. The cash flow modelling was based on a gold price of A\$3,000/oz. The mine demonstrated a positive net cash flow with acceptable returns.

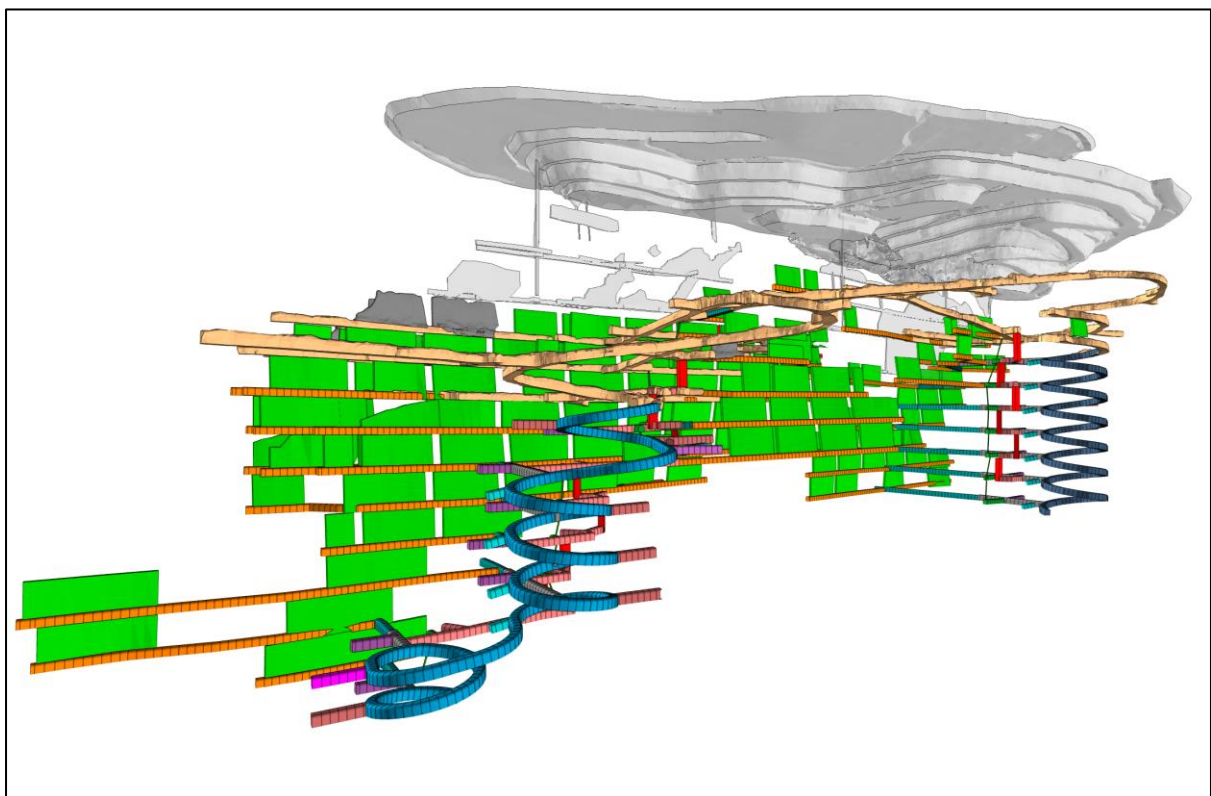


Figure 5: Isometric view looking north-west of Riverina Underground Ore Reserve mine design with existing Ora Banda underground workings (as built yellow drives, dark grey mined stopes as at May 2024) and future Ore Reserve stoping areas (green), Riverina pit and historical underground workings (light grey)

Riverina Underground Mine Schedule

A mine schedule for the Riverina Underground Ore Reserve was developed, with productivity rate assumption in line with actuals achieved to date. With the conversion of further Mineral Resource into reserve higher production rates are anticipated.

The mining sequence assumes top-down echelon mining with no current plans to backfill stopes. The Reserve modifying factors were based on detailed technical plans that are in line with what is considered good industry practice and have a high confidence of achievability.

Sand King Underground

This document forms the Maiden Ore Reserve for Sand King Underground.

Material Assumptions and Outcomes, Criteria for Classification

The Ore Reserve was derived from technical studies incorporating project-specific costs as well as geotechnical analysis, dilution and recovery parameters and is based on the current 2024 Mineral Resource estimate. Processing parameters were based on recent test work combined with historical treatment records. Hydrogeological conditions were determined from recent mining of the Sand King pit, as well as information obtained from extensive Resource drilling.

Costs were derived from the FY25 budget estimate including contract pricing current at the date of this Ore Reserve. Unit costs for mining were estimated based on fully resourced contracted scope of work of which this Ore Reserve forms a portion. Unit costs for haulage, processing and site overheads were estimated based on full utilisation of process plant capacity using material above the economic cut-off grade. Full utilisation of process capacity is reliant on realising expected conversion of further Mineral Resource to Ore Reserve or supplementing plant feed by toll treating third party sources.

The Sand King Underground Ore Reserve was estimated using a gold price of A\$2,250/oz.

The dilution skin method was employed to reflect the selective mining method proposed for Sand King Underground. Dilution parameters were based on a geotechnical assessment of the expected mining environment. A cut-off grade of 2.5g/t was applied to determine economic mining envelopes. Costs derived from the FY25 budget including contract pricing current at the time were used to validate the Ore Reserve.

Mining extraction ratios for the underground Ore Reserve is dependent upon the dimensions and spacing of pillars throughout the orebody. The Sand King mine design assumes 45m open stopes (along strike) and pillars of 5m by 17.5m, which equates to 92% extraction ratio (mining recovery). 45m stope strike extents are considered a practical distance over which to successfully operate remote loaders to recover ore from open stopes. An additional 5% ore loss was also included for operational losses. The overall stope recovery was estimated to be 87%.

Mining Method

The underground mine design is premised on a conventional longhole open stoping mining method, commonly used in the Western Australian Goldfields.

Mining equipment will be mechanised, with equipment to include electric-hydraulic drills for development and production, and rubber tyred loaders and trucks for load and haul activities. Production loading will incorporate tele-remote loading for non-entry mining stopes.

Based on the geotechnical assessment, which identified good ground conditions and low stress environment, as would be expected at the shallow mining depths planned, no stope backfill is contemplated.

Cut-off Grades

Cut-off grades for the Sand King Underground Ore Reserve was incrementally estimated to be 2.5g/t for production stoping ore. The cut-off grade calculation was estimated at a gold price of A\$2,250/oz, and is inclusive of mining, transport, processing, overheads and selling costs. A cut-off grade of 1.2g/t was applied to the underground development based on the incremental cost of treating ore.

Processing Method

The process for treating ore at the DGP is conventional CIL with some gold recovered via gravity circuit. This is a standard gold processing flowsheet used throughout the industry for this style of mineralisation. The process plant has a nominal throughput rate of 1.2 Mtpa based on a grind size of 106 µm. The process plant has been successfully operated and further operational improvements have been conducted in FY24 and additional are planned for FY25. The processing recovery applied to Sand King Underground was 87% and was based on recent metallurgical test work.

Estimation Methodology, and Modifying Factors

The ore drive width is designed at 4.5 metres allowing access for larger mechanised mining equipment. Split firing will be undertaken as part of development cycle within the 4.5m wide ore drives in the south and far north zones where the mineralisation is less than 2m. Given the nature of the mineralisation 35% of ore development has been assumed to be split fired which will further reduce dilution significantly. The practice has been successfully undertaken at other Western Australian gold mines with similar styles of mineralisation.

Given the nature of the mineralisation, the global dilution, inclusive of stoping and ore drive development, equates to 29% of material. Dilution being all included material less than 0.9 g/t.

Delineation of economic stoping areas was completed using Deswik™ software. Mineable “stope” shapes were created to simulate fully diluted stope blocks. Stope selection was optimised using a cut-off grade of 2.5g/t, spatial optimisation and incremental cut-off grades used to ensure all economic ounces are included.

A minimum stope mining width of 1.5 m was applied in the dilution modelling process, with an additional 0.7 m dilution skin applied to all valid stope shapes (0.4m hanging wall and 0.3m footwall). In addition, a nominal provision for unplanned dilution of 5% was also included as a contingency to all stoping panels.

Background grades were estimated into the model and were included in the dilution modelling.

Inferred material was not considered in defining the stoping envelopes; however, due to practical mining geometries a small portion of Inferred material is included within the Underground Ore Reserve. This material equates to 12,014t at a grade of 2.7g/t. This material is included at the edges of the mining envelope and equate to 2% of the Sand King Underground Ore Reserve inventories. This material is not considered material to the economics of the project.

Measured material was converted to Probable Reserve due to no underground mining having occurred at Sand King. The measured material equates to 1,680t at a grade of 8.5g/t and 0.8% for the Reserve.

Mine Design

The mine design for the Sand King underground consists of a main access portal and primary return ventilation rise. Both are located in the fresh rock portion of the existing Sand King pit, given the improved ground conditions encountered.

The decline is 5.5 m wide x 5.7 m high with a typical gradient of 1:7. Ore drives are designed to be 4.5 m wide x 4.5 m high. The average floor to floor slope distance between levels is set at 22 metres, with an average stope panel height of approximately 17.5 metres.

The economic viability of the Sand King Underground was confirmed using current commercial parameters in a project evaluation cash flow model. This model also considered project phasing, stockpiling, project capital and the effect of fixed costs. The cash flow modelling was based on a gold price of A\$3,000/oz. The mine demonstrated a positive net cash flow with acceptable returns.

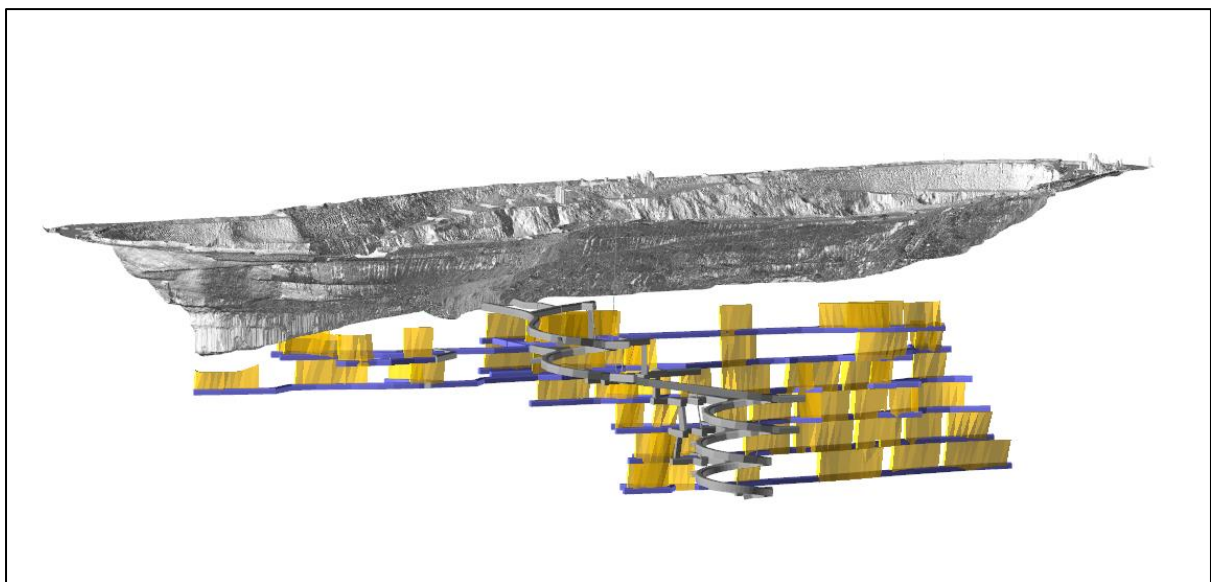


Figure 6: Sand King Underground Ore Reserve mine design with Sand King pit (oblique view looking north)

Sand King Underground Mine Schedule

A mine schedule for the Sand King Underground Ore Reserve was developed, with productivity rate assumption in line with actuals achieved to date. With the conversion of further Mineral Resource into reserve higher production rates are anticipated.

The mining sequence assumes top-down echelon mining with no current plans to backfill stopes. The Reserve modifying factors were based on detailed technical plans that are in line with what is considered good industry practice and have a high confidence of achievability.

Competent Persons Statement

The information in this announcement that relates to exploration results, and the Riverina Area, British Lion, Forehand, Silver Tongue, Waihi, Callion, Sand King and Missouri Mineral Resources is based on and fairly and accurately represents information and supporting documentation compiled under the supervision of Mr Ross Whittle-Herbert, an employee of Ora Banda Mining Limited, who is Member of the Australian Institute of Geoscientists. Mr Whittle-Herbert has sufficient experience which is relevant to the style of mineralisation and type of deposit under consideration and to the activity which he is undertaking to qualify as a Competent Person as defined in the 2012 Edition of the 'Australasian Code for Reporting of Exploration Results, Mineral Resources and Ore Reserves'. Mr Whittle-Herbert consents to the inclusion in the announcement of the matters based on his information in the form and context in which it appears.

The Missouri, Sand King, Riverina Area, British Lion, Waihi, Callion, Forehand and Silver Tongue Mineral Resources have been updated in accordance with all relevant aspects of the JORC code 2012, and initially released to the market on 2 December 2019, 26 May 2020, 5 June 2020, 9 October 2020, 1 August 2022 & 16 February 2023 (Riverina Area), 15 May 2020 & 29 June 2020 (Callion), 29 July 2021 (Forehand, Silver Tongue & British Lion). Further details on Riverina and Sand King are provided in this release.

Mineral Resources other than Missouri, Sand King, Riverina Area, British Lion, Waihi, Callion, Forehand and Silver Tongue were first reported in accordance with the JORC 2004 code in the Swan Gold Mining Limited Prospectus released to the market on 13 February 2013. Mineral Resources other than Sand King, Missouri, Riverina Area, Forehand, Silver Tongue, British Lion, Waihi and Callion have not been updated to comply with JORC Code 2012 on the basis that the information has not materially changed since it was last reported. The Company is not aware of any new information or data that materially affects the information in that Prospectus and confirms all material assumptions and technical parameters underpinning the estimates continue to apply and have not materially changed.

The information in this announcement that relates to Ore Reserves for Riverina and Sand King Underground is based on, and fairly and accurately represents, information and supporting documentation compiled by Mr Leroy Savage, who is an employee of Ora Banda Mining Limited, and has sufficient relevant experience on matters relating to mine design, mine scheduling, mining methodology and mining costs. Mr Savage is a member of the Australian Institute of Mining and Metallurgy. Mr Savage is satisfied that the information provided in this announcement has been determined to a pre-feasibility level of accuracy or better. Mr Savage consents to the inclusion in the announcement of the matters based on his information in the form and context in which it appears.

The information in this report that relates to Open Pit Ore Reserves is based on, and fairly and accurately represents, information and supporting documentation compiled by Mr Geoff Davidson, who is an independent mining engineering consultant who is employed by Mining and Cost Engineering Pty Ltd, and has sufficient relevant experience to advise Ora Banda Mining Limited on matters relating to mine design, mine scheduling, mining methodology and mining costs. Mr Davidson is a Fellow member of the Australian Institute of Mining and Metallurgy. Mr Davidson is satisfied that the information provided in this announcement has been determined to a pre-feasibility level of accuracy or better, based on the data provided by Ora Banda Mining Limited. Mr Davidson consents to the inclusion in the announcement of the matters based on his information in the form and context in which it appears.

Forward-looking Statements

This announcement contains forward-looking statements which may be identified by words such as "believes", "estimates", "expects", "intends", "may", "will", "would", "could", or "should" and other similar words that involve risks and uncertainties. These statements are based on an assessment of present economic and operating conditions, and on a number of assumptions regarding future events and actions that, as at the date of this announcement, are expected to take place.

Such forward-looking statements are not guarantees of future performance and involve known and unknown risks, uncertainties, assumptions and other important factors, many of which are beyond the control of the Company, the Directors and management of the Company. These and other factors could cause actual results to differ materially from those expressed in any forward-looking statements.

The Company has no intention to update or revise forward-looking statements, or to publish prospective financial information in the future, regardless of whether new information, future events or any other factors affect the information contained in this announcement, except where required by law.

The Company cannot and does not give assurances that the results, performance or achievements expressed or implied in the forward-looking statements contained in this announcement will actually occur and investors are cautioned not to place undue reliance on these forward-looking statements.

For personal use only

Appendix 1 – Mineral Resource

The following points pertinent to ASX Listing Rule 5.8.1 in relation to the updated estimates are listed below.

GEOLOGY & GEOLOGICAL INTERPRETATION

Lithology

Sand King

Mafic rocks of the Siberia area have been assigned to the Wongi and Missouri Basalt Units of the Pole Group, while the ultramafics to their south and east are assigned to the Walter Williams Formation. Gold mineralisation associated with the Sand King deposit is hosted entirely within Missouri basalt, immediately west of the boundary with the komatiite-dominated Walter Williams Formation. Within the Missouri Basalt are two distinct units, a pillowed unit and a younger feldspar phyric, columnar jointed unit. Stratigraphic layering in the Siberia area strikes NE-SW and dips moderately towards the south-east and forms part of the western limb of the regional-scale Kurrawang Syncline. Numerous examples of younging direction in pillows are observable in the pit. The pillowed unit is more massive (competent) than the columnar basalt and is the preferred host for gold mineralisation. Two narrow interflow sediments and two narrow ultramafic units with limited continuity have been observed in core logging within the mafic package. A thin dolerite is also present.

Aplite dykes form a NE-trending dyke swarm that cuts both the western and eastern units of the Missouri Basalt. The dykes are up to 5m thick. The composition of the dykes is probably equivalent to that of monzogranite. Aplite dykes predate mineralisation and are occasionally mineralised where proximal to mineralised structures.

Riverina

Mafic and ultramafic volcanics and volcanogenic sedimentary lithologies (wacke, siltstone, shales) are found in the main Riverina resource area. The Riverina deposit sits on the western limb of a regional significant syncline with the mine sequence generally dipping steeply (approximately 80-70°E) to the east.

Mafic basalts are the dominant rock type and host the Main Lodes within the Riverina deposit. Narrow, tightly constrained shear zones within the basalt host mineralised quartz veining with relatively tight alteration halos. Immediately to the west of the host basalt at Riverina is a thick body of peridotite (ultramafic). Several discrete, narrow ultramafic bodies have also been identified in the Riverina mine area. These narrow ultramafic bodies are interleaved with the mafic and sediment units proximal to the orebody in the Murchison and Reggie Lodes.

Metasedimentary bodies are host to mineralisation within both the Murchison and Reggie Lodes. Originally fine-grained greywackes and siltstone, they are now represented as moderately foliated to highly deformed felsic schists with zones that appear mylonitic in nature. The widths of the metasedimentary units range from very thin discontinuous lenses to more robust strike extensive units locally up to 15m wide. A thinly bedded/laminated interflow sediment horizon lies in close proximity to the Main Lode ore zones in the southern portion of the deposit area. Semi-massive

and massive sulphide zones are found within carbonaceous shale beds in the Murchison and Reggie Lode areas. These black shales are typically gold poor.

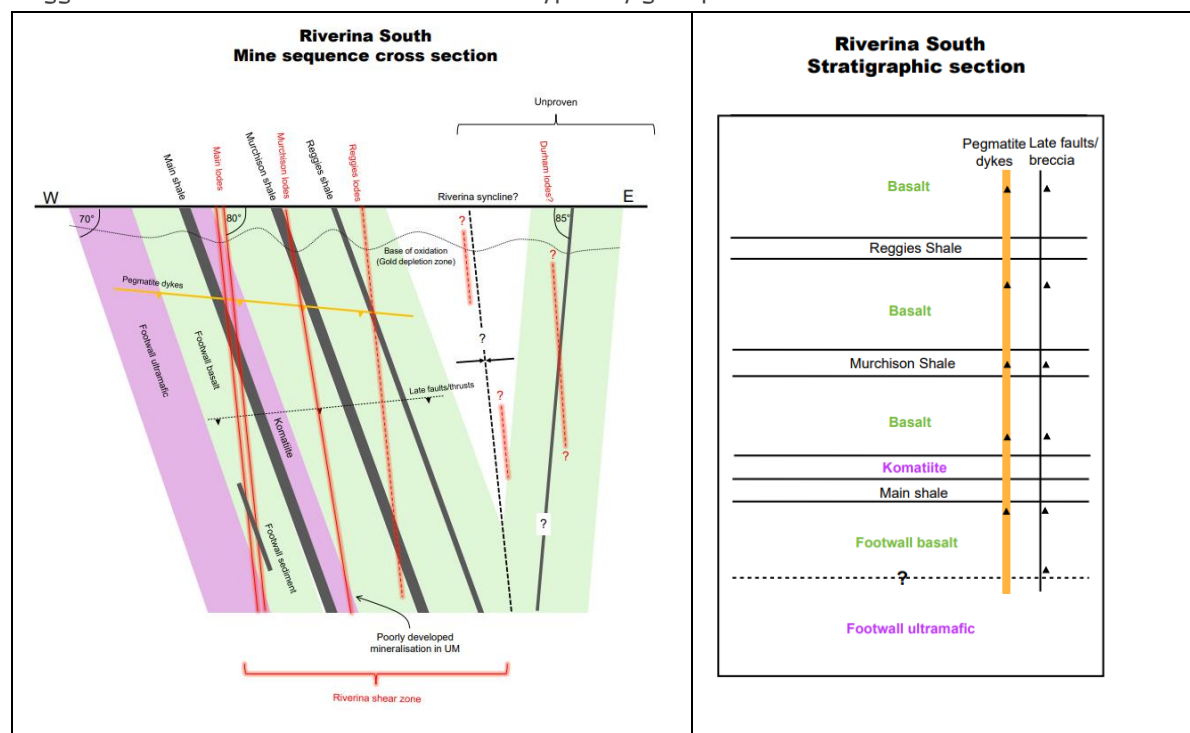


Figure 2 – Diagrammatic cross section of the defined mine sequence of the Riverina Deposit and indicative stratigraphic section.

Late pegmatite dykes form a shallow S-SW dipping dyke swarm that cross-cut all lithologies including alteration related to gold mineralisation. Narrow, steep east and north dipping dykes are also visible in the open pit. Dykes can be up to several metres true thickness but are more commonly 1m or less and often pinch out/terminate on late structures.

Structure

Riverina

The Riverina deposit is interpreted to lie in a low strain zone of a several km long macro shear boudin, bounded to the east and west by thick ultramafic bodies. This macro boudin has developed around the core of a regional syncline that has been rotated and deformed within a ductile stress regime. The deposit is located within the western limb of this tightly folded syncline, with the stratigraphy within the limb dipping at approximately 70°E. Major shear zones have developed on this steep east dipping fold limb and control the line of historic workings north and south of the deposit.

There are three main mineralised horizons which make up the Riverina Deposit, namely Main Lodes, Murchison Lodes and Reggie Lodes. The Main Lode is defined as two discrete steep dipping to sub-vertical structures striking between 340 and grid north, running parallel while maintaining a separation of between 5m and 15m. These structures are remarkably consistent in their strike and dip continuity and have been consistently intersected in drilling for over 1.7 km of strike and over 450 vertical metres down dip.

The Murchison Lodes are a series of parallel/sub-parallel mineralised structures that strike more north-south and also dip steep to the east. The tenor of the mineralisation is influenced by the

different lithologies that these steep shears cut. The mineralised structures are generally narrow, displaying tight alteration halos.

The Reggie Lodes make a minor contribution to the overall MRE but remain under-drilled and form a high priority exploration target.

The Riverina area is dominated by tight to isoclinal folding (F1) that has an overall plunge of ~30° to the south. This mirrors the average plunge of mineralisation across the deposit, although observations from drill core show there are localised areas where the plunge is measured as sub-horizontal (5-10°) to the south and possibly coincides with an increased tenor of grade and width.

Mineralisation is in the form of quartz veining and potassic alteration with sulphide and gold precipitation in fold-parallel shear zones in fold limbs (not axial planes). This structural event involved NE-SW shortening and continued intense shearing over a period of time to create mylonite ore zones. Generally, the mineralised shears dip steeply, approximately 80-85°E, thereby cutting the stratigraphy at a very acute angle. Quartz veins within the mineralised shears exhibit a boudinaged form (as seen in outcrop and drill core), with well-developed concave shapes. Measurements of the plunge of these quartz boudins provide the most accurate determination of the mineralisation plunge, which ranges from sub-horizontal to up to 35° to the south.

The rocks at Riverina exhibit a diverse range of deformation over short distances. Only metres from mineralised shear zones, where rocks are intensely deformed and often mylonitic, pillow basalts are relatively undeformed, showing their distinctive flat bases and domal tops (younging direction to east). Undeformed sediment units also exhibit fine graded bedding and laminations. Pegmatite dykes, although weakly deformed by later structural events, tend to remain fairly pristine.

The post-mineralisation structural architecture based on recent pit mapping and drill core logging highlights the presence of multiple shallow south dipping thrust faults that transect the entire Riverina area. In the Riverina North pit, one such thrust is marked by a 30-40cm thick zone of fault gouge (cataclasite) and saccharoidal quartz. Associated ramp structures, back thrusts and antithetic shears form a complex structure array in the Riverina North pit. N-S sub-vertical mineralised shear zones have also been reactivated and acted as transfer faults associated with the late-stage thrusting. Several of these structures have been intersected in underground development.

During the underground mining event in the late 1980's, subvertical faults, subparallel to the Riverina Main Lodes have been mapped. They intersect the lodes at low angles (<10°), are highly foliated and 2-3 m wide with fault gouge in localised areas. Cross faults striking NW-SE dip shallow to moderately to the NE as seen underground on Level 3, exhibit a sinistral sense of movement, have a displacement of 5 m to 8 m and extend into the Murchison and Reggie Lodes. The fault structures tend to be 0.5 m to 1.0 m in true width with internal brecciation bleaching and quartz veining.

Low angle faults and joints strike NNE-SSW and dip 10° to 40° to the WNW throughout the old underground mine. They often appear as single planes and occasionally as sets of close-spaced fractures and have also been identified in recent diamond drill programs. Individually, they appear to have no significant effect on mineralisation and grade; however, when they occur as a set, they offset the lode. The maximum observed offset was 1.5 m horizontally. These faults appear to have a dextral movement.

Sand King

There are several structural styles and orientations associated with Sand King gold mineralisation. The current structural history includes development of early conjugate, ductile shear structures striking ~010° and 330° and dipping moderately to the east. Subsequently brittle tension veins striking 060° and 090° developed and introduced the bulk of the gold mineralisation.

Kinematics show dextral movement on the 010° and sinistral movement on the 330° shears. 010° shears are frequently exploited by the later aplite dykes. Shears are sometimes quartz filled with weak boudinage and sometimes dry with no observable quartz or alteration. Quartz deposition and gold precipitation at Sand King is dominantly associated with later tension veins in either 060° or 090° orientation and dipping steeply north. 060° striking veins tend to have the greatest continuity while the 090° veins tend to form linking structures between the 060° veins and have shorter continuity. Movement along the tension vein structures is primarily strike-slip, supported by sub-horizontal slicken lines on exposed planes. Later dextral movement along 060° tension veins is evident, and an extreme example is in the north-east of the pit. Here shearing has formed en-echelon quartz arrays.

When the tension veins intersect the 330° and 010° shears the ore bearing fluids migrate up and down the shear, causing grade and volume “blowouts”. The intersection of the steep north dipping tension veins with the moderate east dipping 330° and 010° shears give a steep north plunge to the high-grade blowouts. The blowouts form pipe-like features.

Alteration & Mineralisation

Riverina

Mineralisation at Riverina is hosted within three distinct mineralised shear systems; from west to east they are the Main Lodes, the Murchison Lodes and the Reggie Lodes.

The Main Lode mineralised zone is hosted within pillowed basalts, the dominant rock type in the area and comprises several continuous discreet lodes running sub-parallel to each other, although only two form the bulk of the mineralisation. The individual ore zones range from <0.5m to up to 3m wide with the high-grade core characterised by intense shearing/mylonitisation of boudinaged quartz-sulphide veins and surrounding strong banded silica-biotite-sericite alteration of the mafic host. The main lodes exist within a broader shear zone characterised by weaker shearing and alteration. High gold grades are occasionally noted in the broader shear, associated with localised stronger silica alteration/veining, but are discontinuous. Boudin necks are measured in core and underground development and indicate a shallow southerly plunge (15 to 30°) to the south of high grade mineralisation.

The dominant sulphide minerals are pyrrhotite and pyrite, with arsenopyrite and galena observed in the highest gold grade intervals. Highest concentration of sulphide tends to be within intensely altered wallrock adjacent to quartz veining. Visible gold is present as fine discreet flakes, however in very high-grade zones, forms small foliation parallel accumulations.

The Murchison Lodes comprise several parallel/sub-parallel mineralised zones ranging from <1m to several metres thick with variable grades. Lodes are hosted within both strongly sheared and

altered basalts, and finely bedded volcanogenic sediments (wacke, siltstone, shale). Basalt hosted ore zones exhibit strong shearing and boudinaged quartz-sulphide veining with associated strong silica-biotite-sulphide alteration. Strong shearing with boudinaged quartz-sulphide veining and associated silica-sericite alteration characterise the mineralisation with the sediment hosted ore zones in the Murchison. Sulphides are dominantly pyrite and pyrrhotite with localised arsenopyrite, galena and chalcopyrite.

Reggie Lodes are similar in character to the Murchison, comprising several sub-parallel, semi-continuous mineralised zones within both basalt and sediment host rocks.

Sand King

There are two alteration events at Missouri and Sand King, including an initial pervasive greenschist alteration event related to regional metamorphism, and a later hydrothermal alteration event related to gold mineralisation. Gold mineralisation typically occurs in a series of quartz veined, biotite-albite-calcite-pyrite-pyrrhotite lodes. Typically, the lode alteration extends for only 1-1.5m away from the quartz veining although at times, zones of alteration up to 5m from veining have been noted. Pyrite is the dominant sulphide as disseminations in wall rock and clusters within veins. Pyrrhotite (FeS) is noted to replace pyrite (FeS₂), infilling pressure shadows around pyrite euhedra. This suggests an evolution of the mineralising hydrothermal fluid from a S₂ rich to S₂ depleted composition. Other sulphide minerals, observed in hand specimen and/or polished thin sections include, galena, altaite (Pb telluride), chalcopyrite, molybdenite, Ilmenite, bismuth tellurides and sphalerite with arsenopyrite notably absent. Tungsten, in the form of scheelite is commonly present.

Weathering

Riverina

The weathering profile at Riverina is highly variable. Weathering increases significantly within shear zones and depth to fresh rock reaches vertical depths of 80m in the centre of Riverina deposit and 40 to 50m on the flanks of the main shear structures. The base of complete oxidation can extend to depths of up to 50 m vertical metres within the main shear zones. The base of complete oxidation over unaltered, massive mafic and ultramafic lithologies can be as shallow as 3–5 m below the current ground surface, as is evident in the north of the Riverina open pit. In places, possible zones of depletion in the upper saprolite are interpreted, where weaker mineralised shears appear to terminate ~20 m below surface. Stronger shears project to surface, although some redistribution of gold may have taken place from these shears as well. Significant areas of supergene enrichment are not evident.

Sand King

The oxidation profile at Sand King is also thin (<20 m) outside the main deformation corridor that hosts mineralisation. Within the mineralised corridor weathering extends to approximately 40 m below surface at which point the transition to unweathered material occurs over an average distance of 20 m.

DRILLING AND SAMPLING, AND SAMPLE ANALYSIS TECHNIQUES

Riverina

Modern exploration in the Riverina area began in the mid 1980's. Numerous operators have held the tenure since. Although a proportion of drilling data is from previous operators, it is generally well documented and to industry standards of the time. In addition, Ora Banda has added significant drilling to the Riverina deposit. All RC and diamond drilling at the deposit is deemed suitable for resource estimation purposes. Previous operators include Riverina Gold NL, Riverina Gold Mines, Greater Pacific Gold NL, Barmenco, Barra Resources Ltd., Riverina Resources Ltd., Monarch Gold Ltd and Ora Banda.

RC holes drilled by most operators were typically at least 5 inch in diameter. RC hole diameters from drilling by Riverina Gold NL and Barra Resources is unknown. Diamond holes were all HQ or NQ in diameter.

Early RC and diamond hole locations (Riverina Gold NL, Riverina Gold Mines, Greater Pacific Gold NL) were surveyed on an early Riverina local grid which is oriented to true north. The origin for this grid is 10,000N, 10,000E located at the south-west corner of surveyed tenement M30/98. These coordinates were transformed to MGA94 Zone 51 using well established grid transformation parameters. Drilling by other operators was surveyed by mine surveyors or contractors using DGPS or RTKGPS in either AMG84 Zone 51 or MGA94 Zone 51 coordinates. Surface collars drilled by Ora Banda were all picked up by the mine surveyor in MGA94 Zone 51 coordinates.

Generally shallow RC holes by Riverina Gold NL. and Riverina Gold Mines were not down hole surveyed. Other early operators downhole surveyed RC holes by Eastman camera. Diamond Holes were downhole surveyed by Eastman camera or gyro. Riverina Resources employed Eastman camera, electronic multi-shot or gyro for surveying. Electronic multishot was used by Monarch Gold and north seeking gyro was used by Ora Banda. All grade control holes drilled by Ora Banda are surveyed by the mine surveyor and downhole surveyed by rig north seeking gyro.

UG diamond drill rig alignment is via surveyed collar locations and the DeviAligner tool, downhole surveys via DeviGyro-Ox tool. Underground face sample locations measured via laser distometer to known surveyed control points and development surveys via theodolite.

RC sampling protocols for some early operators (Riverina Gold NL., Riverina Gold Mines, Greater Pacific Gold NL., Barmenco) are unknown. A riffle splitter was employed by Riverina Gold Mines and ¼ was sent for analysis. Later operators collected samples through a cyclone and split using either a riffle splitter or cone splitter. Barra Resources, Riverina Resources and Monarch Gold submitted 4m composites for analysis. These were taken using a spear or flour scoop. Anomalous intervals were then re-split using a riffle splitter and submitted for analysis. Ora Banda sampled every meter with a 2-3kg split taken from a cone splitter. Ora Banda occasionally submitted 4m composite samples by spearing the 1m sample piles. If anomalous gold values were returned, the individual 1m samples from the rig cone splitter were submitted as a separate batch.

Diamond core was generally sampled to geological boundaries and or ore intervals. Generally, half core was sampled though Barra Resources Ltd. submitted whole core for analysis. Core sampling or resource drilling by Ora Banda was defined by a geological or mineralisation boundary with ½ core submitted for analysis. Frequently underground drill core was whole core sampled. All drill samples were logged by qualified geologists.

Historical assay QAQC protocols used by companies prior to Monarch Gold's ownership (pre-2007) have not been documented in any detail. Monarch Gold submitted Certified Reference Material every 20th sample in RC drilling programmes. Duplicate samples were submitted every 25th sample for RC drilling. The protocol adopted by Ora Banda required CRM standards and blanks be inserted every 25 samples for RC and diamond drilling. The frequency rate of RC field duplicate samples was nominally 1 every 30m.

The current resource update follows an extensive surface RC and diamond drill program completed after the previous MRE released in April 2023. An additional 8 RC holes and 32 diamond holes (many with RC pre-collars) were included in this resource update. In addition, there are 185 diamond holes drilled from underground and 544 sampled faces included in the current MRE.

Assay QAQC for the additional drilling was analysed. Assay precision was good, performance of certified reference material was acceptable and overall results were generally acceptable.

Sand King

Modern exploration in the Siberia area commenced in the 1980s by WMC and was followed by numerous operators who held the tenure for various periods. Although a significant proportion of drilling data is from previous operators, it is generally well documented and to industry standards of the time. In addition, Ora Banda has added significant drilling to the Siberia deposits. All RC and diamond drilling at the deposit is deemed suitable for resource estimation purposes.

Previous operators include WMC, Gilt-Edged Mining, Gold Fields Ltd., Siberia Mining Corporation, Monarch Gold Ltd and Ora Banda.

RC drilling was completed by all operators. Hole diameters for WMC, Gilt-Edged Mining and Gold Fields Ltd. are unknown. All other operators drilled either 4 inch (Monarch Gold) or >5 inch diameter holes (Ora Banda). Diamond core holes were generally HQ or NQ diameter, though WMC drilled some BQ diameter holes. Diamond core by WMC was not oriented, other operators oriented the core. Collar locations were surveyed by various contractors and methods including theodolite (WMC), Differential GPS (Gilt-Edged Mining, GoldFields Ltd., Siberia Mining Corporation) and RTKGPS (Monarch Gold, Ora Banda).

RC holes by WMC were generally not downhole surveyed. RC holes by other operators were downhole surveyed by magnetic methods such as Eastman single shot or electronic multi shot. Early diamond holes by WMC were downhole surveyed by Eastman single shot or multi-shot camera approximately every 30m. Later operators surveyed RC holes with electronic multiple shot, Eastman single shot or Gyro. Diamond holes by more recent operators (Siberia Mining Corporation Ora Banda) were north seeking gyro surveyed.

All grade control holes drilled by Ora Banda are surveyed by the mine surveyor and downhole surveyed by rig north seeking gyro.

Percussion samples were generally collected at 1 m intervals, split in the field, generally using a riffle splitter to produce a 2-3 kilogram subsample. Some operators composited the 1m samples to either 2m, 4m or 5m intervals using a spear or scoop to sample from the split reject. The bagged, split 1m samples were submitted for assay if anomalous composite assay results were returned. Core was generally cut in half and sampled at geological boundaries (Gold Fields Ltd. Ora Banda) or

1m intervals (Siberia Mining Corporation). RC samples from Delta Gold were collected through a cyclone in large plastic bags at 1m intervals. All drill samples were logged by qualified geologists.

Ora Banda RC drill sample recovery is monitored and visually checked for recovery, moisture and contamination. RC sample weights were recorded at the laboratory and monitored.

Historical QAQC protocols used by companies prior to Gilt Edged Mining's ownership have not been documented in any detail. Gilt Edged Mining routinely used standards, field duplicate samples and check analyses at a second laboratory to monitor analytical quality. Siberia Mining Corporation used standards and field duplicates (1 in 20) during drilling campaigns to provide a reference material to monitor laboratory performance. Monarch Gold submitted Certified Reference Material every 20th sample in both RC drilling programmes. Duplicate samples were submitted every 25th sample for RC drilling. The protocol adopted by Ora Banda required CRM standards and blanks be inserted every 25 samples for RC and diamond drilling. The frequency rate of duplicate samples was nominally 1 every 30m.

During 2023 and 2024 Ora Banda completed 16 RC holes (1,244m), 23 RCDD holes (5,746m) and 35 DD holes (10,668m). This significant program of drilling is included in the current MRE.

SAMPLE ANALYSIS METHODS

Riverina

Historical assay QAQC protocols used by companies prior to Monarch Gold's ownership (pre-2007) have not been documented in any detail. Monarch Gold submitted Certified Reference Material every 20th sample in RC drilling programmes. Duplicate samples were submitted every 25th sample for RC drilling. The protocol adopted by Ora Banda required CRM standards and blanks be inserted every 25 samples for RC and diamond drilling. The frequency rate of RC field duplicate samples was nominally 1 every 30m. All underground diamond drill and face samples include routine CRM and blank samples. Diamond core is sampled to geological intervals with a minimum length of 0.3m. All Ora Banda drilling and face samples since the previous MRE are prepared in the SGS on-site sample preparation laboratory and pulps are sent to SGS in Kalgoorlie for analysis. A 50 g charge was taken and analysed by fire assay Microwave Plasma-Atomic Emission Spectroscopy (MP-AES).

Sand King

All WMC samples were analysed at the WMC exploration division laboratory by 25g Aqua Regia with AAS finish. Gilt Edged mining analysed composite samples by MinLab, Kalgoorlie using 25g Aqua Regia, AAS finish. Individual 1m samples from composite results >0.2 g/t were submitted to Genalysis in Perth for fire assay with a 50 g charge. RC and diamond samples collected by Gold Fields Ltd. were dried, crushed, split, pulverised and a 50 g charge taken for fire assay at Australian Laboratory Services in Kalgoorlie. All assaying by Siberia Mining Corporation was done by either SGS Analabs in Kalgoorlie or Ultratrace using a 50 g charge taken for fire assay. Monarch gold assayed by 50g fire assay with AAS finish. Samples were submitted to both ALS Laboratories and Ultratrace.

While named Eastern Goldfields, Ora Banda utilised Intertek-Genalysis in Kalgoorlie, Kalassay in Kalgoorlie, SGS in Kalgoorlie and Nagrom Laboratories in Perth for sample analysis. A 50gm charge was taken and analysed by fire assay ICP-OES. Drilling completed in 2020 by Ora Banda utilised

Nagrom Laboratories in Perth and SGS in Kalgoorlie for sample analysis. A 50 g charge was taken and analysed by fire assay ICP-OES. For 2023 and 2024 drilling Ora Banda utilised the SGS on-site facility for sample preparation with pulps sent to SGS in Kalgoorlie for analysis. A 50 g charge was taken and analysed by fire assay MP-AES.

ESTIMATION METHODOLOGY

Mineralised domains were interpreted to assay grade boundaries corresponding to geological observations in core and face photographs, and geology logging, including structure. All drilling and face sampling from underground development was used to aid the interpretation. RC, diamond drilling and face sampling assay data was used in the estimation of grades. Sample intervals were manually defined using Leapfrog™ software, on a section by section basis. The narrow but variable width of the mineralisation precluded the utilisation of fixed length composite samples as no one composite length was satisfactory for all locations. This led to the adoption of full width compositing, using Leapfrog™, which compiles the entire drill hole intersection across the mineralisation into a single full width composite of variable length. Leapfrog™ also calculates the true width of the sample interval using its distance function. The distance from the sample interval mid-point to the footwall and hangingwall surface of the lodes is determined and the two values are added to get the full width.

A 2-dimensional estimation technique was adopted where the lodes are projected onto a 2D northing-elevation plane with a nominal easting. The 2D estimation method accounts for the different sample supports by estimating an 'accumulation' variable, which is defined as the product of the assayed grade and the true width of the lode. The lode width is also estimated, and the final gold grade is back calculated from the estimated accumulation and width variables. The 2D estimation method, with a single grade across the full width of the mineralised vein, assumes full horizontal extraction.

Prior to estimation, the easting value of the centre point of each domain composite and each block were set to an arbitrary but constant value.

Spatial continuity, using Supervisor™ software, of accumulation and width variables was evaluated using variography in the 2D plane and the parameters defined were applied in the estimation process. Search neighbourhoods were defined using Kriging Neighbourhood Analysis implemented in Supervisor™. Top cuts were applied to the accumulation variable where appropriate.

Estimation of gold accumulation and width was by ordinary kriging with exactly the same parameters, using Micromine™ software into a parent block size of 20mN x 20mRL. After estimation in the 2D plane the back-calculated gold grade values were pressed across the full width of the corresponding domain in the final 3D model. The domain wireframes were then used to constrain volumes by removing blocks outside the domains, using suitable sub-celling.

The bulk density values for ore were assigned based on the weathering state of the rock and determined from over 3459 drill core density measurements. The model has been depleted to account for existing mining, both underground and open pit.

Sand King

Ore lode interpretation was based on a ~1 g/t cut-off, determined from a log-probability of raw assays from resource drilling, and influenced by the presence and intensity of quartz veining and the dominantly biotite+sulphide rich alteration. Sub 1g/t interval were included in the interval selection if alteration was observed in core photos and logging. Generally, there was no restriction to internal grade dilution. Domain/waste boundaries were treated as hard boundaries and for estimation purposes the mineralised domains were not separated into oxide, transitional and fresh sub domains. Lodes were generally interpreted on E-W sections in Leapfrog™ software using structural measurements to determine whether a drill intercept should be in a 090 or 060 lode or in a shear orientation. All RC and diamond drilling were used to inform the interpretation.

One metre composites were calculated from the raw assay data. Supervisor™ software was used to establish spatial grade continuity. Top cuts were applied to the composite data on a domain by domain basis to reduce the influence of occasional extreme gold grades.

Block model block size is 10mE x 4mN x 10mRL with sub-celling to 1.0mE x 0.5mN x 1.0mRL at Sand King. Estimation was done into the parent blocks. Kriging Neighbourhood Analysis (KNA) was used to define the estimation neighbourhood parameters, including search distances, samples and discretisation. Estimation was completed using multiple runs, each with less restrictive search and minimum sample parameters. All RC, RC grade control and Diamond drilling was included in the MRE.

Oxidation was applied based in DTM surfaces defined from geological drill logs and observations of the pit walls. Values were applied according to oxidation state. Density values were established from 1682 drill core measurements (water immersion method) and referencing historic results from bulk metallurgical samples.

Surface topography was established by recent completion of mining pit surveys completed by the Mine Survey department and a regional Arvista survey completed in 2017.

CRITERIA USED FOR CLASSIFICATION

Riverina

Wireframe solids were constructed to encompass areas considered to adequately fulfil the requirement to be classified as either, measured, indicated or inferred:

- Measured – Near surface areas defined by close spaced RC grade control drilling and an area between two development drives with significant face sampling
- Indicated – Areas with:
 - drill spacing in long section up to approximately 40mN x 40mRL and with reasonable confidence in the geological interpretation and grade continuity.
 - reasonable estimation quality as defined by the conditional bias slope > 0.5
- Inferred – Areas with:
 - drill spacing in long section in excess of 40mN x 40mRL and where grade continuity is poorer as defined by a lower sample density, even though geological continuity may be apparent.
 - poorer estimation quality as defined by the conditional bias slope > 0.2 and < 0.5

Areas of some lodes, particularly at depth have fairly low/no sample support and were not classified.

Sand King

Wireframe solids were constructed to encompass areas considered to adequately fulfil the requirement to be classified as either, measured, indicated or inferred:

- Measured - Close spaced grade control drilling where geological and grade continuity is well established.

Areas classified as Indicated are defined by:

- Good support from drilling, averaging a nominal 30 mN x 30 mE
- Reasonable confidence in the mineralised lode interpretation.

Inferred Resources are defined where there is a lower confidence in geological and grade continuity as defined by a lower concentration of drilling data. Inferred resources are defined by:

- Drill spacing typically greater than 30 mN x 30 mE
- Lodes defined by three or less drill holes

Inferred Resources are generally located around the periphery of ore lodes, particularly at depth at Sand King where drilling is sparse.

CUT-OFF GRADES AND MODIFYING FACTORS

Riverina

The Mineral Resources have been reported from fresh material at a diluted cut-off of 1.3 g/t Au inside Mine Stope Optimiser (MSO) derived solids with dimensions of 10mN x 10mRL and a minimum width of 1.6m. Individual MSO blocks were assessed and removed if above the top of fresh DTM surface and if above the \$2400 optimised pit shell from within which the remaining Riverina open pit resources are reported.

Sand King

The Mineral Resources have been reported from fresh material at a diluted cut-off of 0.8 g/t Au inside Mine Stope Optimiser (MSO) derived solids with dimensions of 10mN x 10mRL and a minimum width of 1.6m. Individual MSO blocks were assessed and removed if above the 350RL (base of current as-mined pit).

Appendix 2 – Mineral Resource Table

PROJECT	MEASURED		INDICATED		INFERRED		TOTAL MATERIAL		
	('000t)	(g/t Au)	('000t)	(g/t Au)	('000t)	(g/t Au)	('000t)	(g/t Au)	('000oz.)
LIGHTS OF ISRAEL	-	-	74	4.3	180	4.2	254	4.2	34
MAKAI SHOOT	-	-	1,985	2.0	153	1.7	2,138	2.0	136
WAIHI	Open Pit	-	2,057	2.3	95	2.0	2,152	2.3	157
	Underground	-	278	3.6	324	3.5	602	3.5	68
	TOTAL	-	2,335	2.5	419	3.5	2,754	2.5	225
Central Davyhurst Subtotal	-	-	4,394	2.3	752	3.3	5,146	2.4	396
LADY GLADYS	-	-	1,858	1.9	190	2.4	2,048	1.9	125
RIVERINA AREA	Open Pit	476	2,118	1.6	117	1.5	2,711	1.6	138
	Underground	24	3.8	1,641	3.8	2,294	3.6	3,959	3.7
	TOTAL	500	1.8	3,759	2.6	2,411	3.5	6,670	2.8
BRITISH LION	Open Pit	-	386	1.6	17	1.6	403	1.6	21
	Underground	-	36	3.2	3	3.8	39	3.2	4
	TOTAL	-	422	1.7	20	2.0	442	1.7	25
FOREHAND	Open Pit	-	-	-	691	1.5	691	1.5	33
	Underground	-	-	-	153	2.5	153	2.5	12
	TOTAL	-	-	-	844	1.7	844	1.7	46
SILVER TONGUE	Open Pit	-	-	-	127	2.3	127	2.3	9
	Underground	-	-	-	77	4.5	77	4.5	11
	TOTAL	-	-	-	204	3.1	204	3.1	21
SUNRAYSIA	-	-	175	2.1	318	2.0	493	2.0	32
Riverina-Mulline Subtotal	500	1.6	6,214	2.2	3,987	2.9	10,701	2.5	854
SAND KING	Open Pit	-	0	0.0	0	0.0	-	-	-
	Underground	113	1.9	1,444	2.7	1,858	2.9	3,415	2.8
	TOTAL	113	1.9	1,444	2.7	1,858	2.9	3,415	2.8
MISSOURI	Open Pit	-	-	-	-	-	-	-	-
	Underground	-	-	464	3.4	246	4.9	710	3.9
	TOTAL	-	-	464	3.4	246	4.9	710	3.9
PALMERSTON / CAMPERDOWN	-	-	118	2.3	174	2.4	292	2.4	23
BLACK RABBIT	-	-	-	-	434	3.5	434	3.5	49
Siberia Subtotal	113	1.9	2,026	2.9	2,712	3.1	4,851	3.0	465
CALLION	Open Pit	-	241	3.7	28	1.6	269	3.5	30
	Underground	-	255	6.0	156	5.5	411	5.8	77
	TOTAL	-	496	4.9	184	4.9	680	4.9	107
Callion Subtotal	-	-	496	4.9	184	4.9	680	4.9	107
FEDERAL FLAG	32	2	112	1.8	238	2.5	382	2.3	28
SALMON GUMS	-	-	199	2.8	108	2.9	307	2.8	28
WALHALLA	-	-	448	1.8	216	1.4	664	1.7	36
WALHALLA NORTH	-	-	94	2.4	13	3.0	107	2.5	9
MT BANJO	-	-	109	2.3	126	1.4	235	1.8	14
MACEDON	-	-	-	-	186	1.8	186	1.8	11
Walhalla Subtotal	32	2.0	962	2.1	887	2.0	1,881	2.1	125
Davyhurst Total	600	1.8	14,100	2.4	8,500	3.0	23,300	2.6	1,950

- The Riverina Area, British Lion, Callion, Forehand and Silver Tongue Mineral Resources have been updated in accordance with all relevant aspects of the JORC code 2012, and initially released to the market on 2 December 2019, 26 May 2020, 5 June 2020, 9 October 2020, 1 August 2022 & 16 February 2023 (Riverina Area), 15 May 2020 & 29 June 2020 (Callion), 29 July 2021 (Forehand, Silver Tongue & British Lion)

- For personal use only
2. The Sand King, Missouri and Waihi Mineral Resources have previously been updated in accordance with all relevant aspects of the JORC code 2012, and initially released to the market on 3 January 2017 & 26 May 2020 (Sand King), 15 December 2016 & 26 May 2020 (Missouri), 4 February 2020 (Waihi). Further updates to Sand King and Riverina are provided in this release.
 3. All Mineral Resources listed above, with the exception of the Missouri, Sand King, Riverina Area, British Lion, Waihi, Callion, Forehand and Silver Tongue were prepared previously and first disclosed under the JORC Code 2004 (refer Swan Gold Mining Limited Prospectus released to the market on 13 February 2013). These Mineral Resources have not been updated in accordance with JORC Code 2012 on the basis that the information has not materially changed since it last reported.
 4. The Riverina, British Lion, Waihi, Callion, Forehand and Silver Tongue Open Pit Mineral Resource Estimates are reported within a A\$2,400/oz pit shell above 0.5g/t. The British Lion, Waihi, Missouri, Callion, Forehand and Silver Tongue Underground Mineral Resource Estimates are reported from material outside a A\$2,400 pit shell and above 2.0 g/t. Riverina Underground Mineral Resource Estimates are reported from fresh material below the A\$2,400/oz pit shell within Mine stope optimised solids of dimensions 10m x 10m x 1.6m minimum width at a diluted cut-off grade of 1.3g/t. Sand King Underground Mineral Resource Estimates are reported from fresh material below 350mRL (base of open pit) within Mine stope optimised solids of dimensions 10m x 10m x 1.6m minimum width at a diluted cut-off grade of 0.8g/t.
 5. Resources are inclusive of in-situ ore reserves and are exclusive of surface stockpiles
 6. The values in the above table have been rounded.

Appendix 3 - JORC CODE, 2012 EDITION – TABLE 1 REPORT TEMPLATE

Section 1 Sampling Techniques and Data – Riverina

Information for historical (Pre Ora Banda Mining Limited from 1980's to 2010) drilling and sampling has been extensively viewed and validated where possible. Information pertaining to historical QAQC procedures and data is incomplete but of a sufficient quality and detail to allow drilling and assay data to be used for resource estimations. Further Ora Banda Mining Limited has undertaken extensive infill and confirmation drilling which confirm historical drill results. Sections 1 and 2 describe the work undertaken by Ora Banda Mining Limited and only refer to historical information where appropriate and/or available.

Criteria	JORC Code explanation	Commentary
Sampling techniques	<ul style="list-style-type: none"> <i>Nature and quality of sampling (eg cut channels, random chips, or specific specialised industry standard measurement tools appropriate to the minerals under investigation, such as down hole gamma sondes, or handheld XRF instruments, etc). These examples should not be taken as limiting the broad meaning of sampling.</i> <i>Include reference to measures taken to ensure sample representativity and the appropriate calibration of any measurement tools or systems used.</i> <i>Aspects of the determination of mineralisation that are Material to the Public Report.</i> <i>In cases where 'industry standard' work has been done this would be relatively simple (eg 'reverse circulation drilling was used to obtain 1 m samples from which 3 kg was pulverised to produce a 30 g charge for fire assay'). In other cases more explanation may be required, such as where there is coarse gold that has inherent sampling problems. Unusual commodities or mineralisation types (eg submarine nodules) may warrant disclosure of detailed information</i> 	<ul style="list-style-type: none"> Croesus Mining N.L; All samples were dried, crushed and split to obtain a sample less than 3.5kg, and finely pulverised prior to a 50gm charge being collected for analysis by fire assay. Monarch Gold Mining Company Ltd; Industry standard work. RC samples collected and sent to certified laboratories for crushing, pulverising and assay by fire assay (RC) and aqua regia (RAB). Pancontinental Mining Ltd; Samples (>2kg) were crushed to 1mm, 1kg split taken and pulverised to 90% minus 20 mesh from which a 50gm aliquot was taken for assay by aqua regia or fire assay. Consolidated Gold N.L/DPPL (Davyhurst Project PTY. LTD.); Industry standard work, RAB samples crushed, pulverised and a 50g charge taken for fire assay. 200gm soil samples oven dried, and pulverised, 50g charge taken for aqua regia assay. Riverina Resources Pty Ltd; Industry standard work. RAB samples taken every metre, composited to 4m using a spear. Samples crushed, pulverised and 50g charge taken for fire assay. RC four metre composite samples were collected using a sample spear. RC and diamond samples crushed, pulverised and 50g charge taken for fire assay and/or 4 acid digest. Any gold anomalous 4m composite samples were re-sampled over 1m intervals using a riffle splitter and also sent to Kalgoorlie Assay Laboratory for gold analysis by 50g fire assay. Barra Resources Ltd; Industry standard work. The entirety of each hole was sampled. Each RC and RAB hole was initially sampled by 4m composites using a spear or scoop. To obtain a representative sample, the entire 1m sample was split using a riffle splitter into a calico bag. Whole diamond core samples for ore zones were sampled. Entire samples were pulverised before splitting and a 50g charge taken for fire assay. Greater Pacific Gold; Core sampling method unknown, assumed to be cut half core. RC sampling method unknown. Analysis method unknown. However, work completed by accredited laboratories, Analabs and Genalysis. Carpentaria Exploration Company Pty Ltd; Samples were collected over 1m intervals. 1m, 2m and 4m composite samples taken depending on the rock type. Composite samples were collected using a sample spear. About 2kg samples were despatched for analysis. Samples crushed, pulverised and a 50g charge taken for fire assay. Malanti Pty Ltd; Industry standard work. 1m samples were collected via a cyclone and passed through a triple splitter giving a 12.5% split of about 2kg. A trowel was used to scoop the samples for composites over 4m and 6m intervals. Samples for assay were then taken with composite intervals based on geology. Many of the single splits were selected for assay in the first instance. Samples packed in poly weave bags were freighted for analysis. Sample crushed, pulverised and a 50g charge taken for fire assay. Riverina Gold Mines NL; Industry standard work, Composited RAB and 1m RC samples assayed by laboratory. Samples crushed, pulverised and a 50g charge taken for aqua regia analysis. Riverina Gold NL; RAB samples were bulked at 2m intervals. RC holes were sampled at 1m intervals. Diamond core samples were taken at geological boundaries, sample method unknown. All samples crushed, pulverised and a charge taken for fire assay (Au) and perchloric acid digest/AAS for other elements.

		<ul style="list-style-type: none"> Ora Banda Mining Limited (OBM) - 1m RC samples using face sampling hammer with samples collected under cone splitter. 4m composite RC samples collected using a PVC spear from the sample piles at the drill site. For drilling up to April 2020, RC samples were dispatched for pulverising and 50g charge Fire Assay. For drillholes RVRC20036 to RVRC20104 inclusive, 1m and 4m composite samples were dispatched to the lab, crushed to a nominal 3mm, split to 500 grams and analysed by Photon Assay method at MinAnalytical in Kalgoorlie. 4m composite samples with gold values greater than 0.2 g/t Au were re-sampled as 1m split samples and submitted to the lab for Photon Assay analysis. Half-core samples, cut by automated core saw. Core sample intervals selected by geologist and defined by geological boundaries. Samples are crushed, pulverized and a 40g charge is analysed by Fire Assay. For all drilling in 2022, - 1m RC samples using face sampling hammer with samples collected under cone splitter. 4m composite RC samples were taken outside of mineralised zone, collected using a scoop from the sample piles at the drill site. 1m cone spilt samples were taken within the expected mineralised zones. Core sample intervals selected by geologist and defined by geological boundaries. All samples were dispatched to the SGS laboratory at the Davyhurst site for pulverising. Prepared samples were then despatched to SGS laboratories in Kalgoorlie for a 50g charge Fire Assay. Underground diamond drilling - Core sample intervals selected by geologist and defined by geological boundaries. All samples were dispatched to the SGS laboratory at the Davyhurst site for pulverising. Prepared samples were then despatched to SGS laboratories in Kalgoorlie for a 50g charge Fire Assay. Underground face sample (rock chips by hammer) intervals selected by geologist and defined by geological boundaries. All samples were dispatched to the SGS laboratory at the Davyhurst site for pulverising. Prepared samples were then despatched to SGS laboratories in Kalgoorlie for a 50g charge Fire Assay.
<p>Drilling techniques</p>	<ul style="list-style-type: none"> <i>Drill type (eg core, reverse circulation, open-hole hammer, rotary air blast, auger, Bangka, sonic, etc) and details (eg core diameter, triple or standard tube, depth of diamond tails, face-sampling bit or other type, whether core is oriented and if so, by what method, etc).</i> 	<ul style="list-style-type: none"> Croesus Mining N.L; Auger samples were drilled by Prodrill Pty Ltd using Toyota mounted auger rig. RAB holes were drilled by either Kennedy, or Arronika or Challenge Drilling of Kalgoorlie. Challenge drilling employed a custom built RAB/AC rig. RC holes were drilled by Ausdrill Pty Ltd and diamond holes were drilled by Sandersons. Core was oriented. Monarch Gold Mining Company Ltd; Aircore and RAB holes were drilled by Challenge Drilling. All RC holes were drilled by Kennedy Drilling Contractors with 5^{1/2}" hammer. Pancontinental Mining Ltd; Drilling was undertaken by Davies Drilling of Kalgoorlie using a Schramm T64 rig. Consolidated Gold N.L/DPPL; Auger samples were collected using a power auger fitted to a 4WD vehicle. RAB drilling was undertaken by Bostech Drilling Pty Ltd. Riverina Resources Pty Ltd; RC holes drilled with 5^{1/4}" hammer. Unknown diamond core diameter. Barra Resources Ltd; Holes were drilled by Resource Drilling Pty Ltd using a Schramm 450 drill rig. Greater Pacific Gold; Schramm RC Rig with face sampling hammer, 5^{1/8}" diameter. NQ core, Edson Rig Carpentaria Exploration Company Pty Ltd; RC drilling by Robinson contractors. Face sampling hammer used. Malanti Pty Ltd; Holes were drilled by Redmond Drilling of Kalgoorlie using a truck mounted Schramm rig with a compressor rated at 900 cfm 350 psi. Riverina Gold Mines NL; Vacuum holes were drilled by G & B Drilling using a Toyota Landcruiser mounted Edsom vacuum rig fitted with a 2 inch (5.08cm) diameter blade. RAB holes were drilled by PJ and RM Kennedy using a Hydro RAB 50 drill rig mounted on a 4 wheel Hino truck with 600 cfm/200 PSI air capacity. A 51/4 inch hammer and blade were used. RC holes were drilled by either Civil Resources Ltd using an Ingersoll Rand T4W heavy duty percussion rig fitted with a 900 cfm at 350 PSI air compressor and a 51/4 inch (13.34cm diameter) RC hollow hammer or by Swick Drilling using an Ingersoll Rand TH 60 reverse circulation drill rig with 750 cfm/350 PSI air capacity and a 51/4 inch RC hollow hammer or by B. Stockwell of Murray Black's Spec Mining Services using a rig mounted on an 8 x 4 Mercedes. Riverina Gold NL; RC hole were drilled by Green Drilling using Schramm T66 rig. Diamond holes were drilled by Longyear. Diamond holes were sometimes drilled with a RC pre-collar, HQ core and a NQ2 core drilled. Ora Banda Mining Limited (OBM) – 5.25 to 5.5 inch diameter RC holes using face sampling hammer with samples collected under cone splitter. HQ and HQ3 coring to approx. 40m, then NQ2 to BOH. Metallurgical and geotechnical core holes drilled using HQ3 exclusively. All core oriented by reflex instrument. All core drilled in 2022 was orientated by Axis instrument. Underground diamond drilling – NQ2 coring with standard tubing (triple tubing for geotechnical), all core is oriented by Axis Champ Ori tool, rig alignment via DeviAligner tool, downhole surveys via DeviGyro-Ox tool.

<p><i>Drill sample recovery</i></p>	<ul style="list-style-type: none"> • <i>Method of recording and assessing core and chip sample recoveries and results assessed.</i> • <i>Measures taken to maximise sample recovery and ensure representative nature of the samples.</i> • <i>Whether a relationship exists between sample recovery and grade and whether sample bias may have occurred due to preferential loss/gain of fine/coarse material.</i> 	<ul style="list-style-type: none"> • Auger, RAB and RC drill recoveries were not recoded by Croesus Mining N.L, Monarch Gold Mining Company Ltd, Pancontinental Mining Ltd, Consolidated Gold N.L./DPPL, Riverina Resources Pty Ltd, Barra Resources Ltd, Carpentaria Exploration Company Pty Ltd, Malanti Pty Ltd, Riverina Gold Mines NL or Riverina Gold Mines NL. However Monarch, in a Riverina resource report state that “Good recoveries for RMRC series RC drilling were observed. Minor water was encountered in 27 of the RMRC series drill holes” • Diamond Core recoveries are very high due to the competent ground. Any core recovery issues are noted on core blocks and logged. • Ora Banda Mining Limited (OBM - Diamond drill recoveries are recorded as a percentage calculated from measured core against downhole drilled intervals (core blocks). Underground diamond drilling – Diamond drill recoveries are recorded as a percentage calculated from measured core against metre marks and noted core loss blocks from driller’s rod counts. Underground face sampling domains marked up, with chip samples taken along the sample line per domain to reduce sampling bias. • There is no known relationship between sample recovery and grade.
<p><i>Logging</i></p>	<ul style="list-style-type: none"> • <i>Whether core and chip samples have been geologically and geotechnically logged to a level of detail to support appropriate Mineral Resource estimation, mining studies and metallurgical studies.</i> • <i>Whether logging is qualitative or quantitative in nature. Core (or costean, channel, etc) photography.</i> • <i>The total length and percentage of the relevant intersections logged.</i> 	<ul style="list-style-type: none"> • Croesus Mining N.L; RAB drill logs were recorded both on paper and later electronically by a Casiopia datalogger. Diamond core was geologically, geotechnically and magnetic susceptibility logged. Qualitative: alteration, colour, contact, grainsize, joint, matrix, texture, rocktype, mineral, structure, sulphide, percent sulphide, vein type, percent vein, weathering. Quantitative; percent sulphide, percent vein. Diamond core was photographed. • Monarch Gold Mining Company Ltd; Qualitative: lithology, mineralisation code, alteration, vein code, sulphide code. Quantitative; percent mineralisation, alteration intensity, percent vein, percent sulphide. • Pancontinental Mining Ltd; All drill data was recorded on computer forms and the lithological descriptions were produced by Control Data’ Bordata program. Qualitative: colour, weathering, minerals, grainsize, rock, structure, alteration. Quantitative: alteration intensity. • Consolidated Gold N.L./DPPL; Holes were logged at 1m intervals using a standard logging sheet directly onto a palmtop logger. Qualitative: colour, weathering, minerals, grainsize, rock, structure, alteration. Quantitative: alteration intensity. • Riverina Resources Pty Ltd; Qualitative: lithology, minerals, oxidation, colour, grain, texture, texture intensity, alteration, sulphide, comments. Quantitative: alteration intensity, percent sulphide, percent quartz veins. • Barra Resources Ltd; Each meter from all RC drill holes was washed, sieved and collected in chip trays and stored at the Barminco First Hit Mine office. These rock chips were geologically logged using the Barminco Pty Ltd geological logging codes. This data was manually recorded on logging sheets or captured digitally using a HP Jornada hand held computer utilising the Micromine Field Marshall program and entered into a digital database at the Barminco First Hit Mine office. Each diamond drill holes was recovered according to the driller’s core blocks and metre marked. The core was logged to the centimetre, and samples were marked up accordingly. The core was geologically logged using the Barminco Pty Ltd geological logging codes. This data was manually recorded on logging sheets in the field and entered into a digital database at the Barminco First Hit Mine office. Qualitative: qualifier, lithology, mineralisation, alteration, grain size, texture, colour, oxidation. Quantitative; percentage of quartz and sulphide. Core was photographed. • Greater Pacific Gold; Qualitative logging of lithology, oxidation, alteration and veining. • Carpentaria Exploration Company Pty Ltd; Qualitative: description. Quantitative; percent oxidation, percent quartz, percent pyrite. • Malanti Pty Ltd; Qualitative: description. Quantitative; percent quartz. Logged on a metre basis. • Riverina Gold Mines NL; Qualitative for Vacuum holes: colour, grain size, alteration minerals, rock type, structure, vein type, sulphides, oxidation and comments. Quantitative for Vacuum holes; percent veins, percent sulphides. Qualitative for RAB holes and RC holes from RV110 to RV295: colour, grain size, alteration minerals, rock type, fabric, vein type, sulphides, oxidation and comments. Quantitative RAB holes and RC holes from RV110 to RV295; percent veins, percent sulphides. Qualitative for RC holes from RV296 to RV350: geology, oxidation, colour and description. Quantitative for RC holes from RV296 to RV350; percent quartz. • Riverina Gold NL; Qualitative: RQD, lithology, mineralisation, alteration, weathering, veining, fracturing. Quantitative: percent quartz. • Ora Banda Mining Limited (OBM - Field logging was conducted using Geobank Mobile™ software on Panasonic Toughbook CF-31 ruggedized laptop computers. Qualitative logging: Lithology, colour, oxidation, grainsize, texture, structure, hardness, regolith. Quantitative: estimates are made of quartz veining, sulphide and alteration percentages. Core photographed both wet and dry. Magnetic susceptibility and RQD were also recorded for core holes. Underground diamond drilling – Qualitative logging: Lithology,

		<p>texture, alteration, mineralisation/sulphides, structure, veining. Quantitative: estimates are made of veining, sulphide and alteration percentages, RQD measurements, core density measurements, core recovery per metre, fractures per metre. Core photographed both wet and dry. Underground face sampling domain logging of lithology, veining, alteration, mineralisation/sulphides with each face mapped and photographed</p> <ul style="list-style-type: none"> All holes were geologically logged in their entirety to a level of detail to support mineral resource estimation.
<p>Sub-sampling techniques and sample preparation</p>	<ul style="list-style-type: none"> <i>If core, whether cut or sawn and whether quarter, half or all core taken.</i> <i>If non-core, whether riffled, tube sampled, rotary split, etc and whether sampled wet or dry.</i> <i>For all sample types, the nature, quality and appropriateness of the sample preparation technique.</i> <i>Quality control procedures adopted for all sub-sampling stages to maximise representivity of samples.</i> <i>Measures taken to ensure that the sampling is representative of the in situ material collected, including for instance results for field duplicate/second-half sampling.</i> <i>Whether sample sizes are appropriate to the grain size of the material being sampled.</i> 	<ul style="list-style-type: none"> Croesus Mining N.L; Auger samples were taken from an average depth of 1.5m to 2m. RAB and Aircore samples were collected in buckets below a free standing cyclone and laid out at 1m intervals in rows of tens adjacent to the drill collar. Composite analytical samples (~3.5kg) were initially collected over 5m intervals for each hole and a 1m bottom of hole analytical sample. Analytical composite samples were formed by taking a representative scoop through each 1m drill sample. RC drill samples were collected in large plastic retention bags below a freestanding cyclone at 1m intervals, with analytical samples initially formed by composite sampling over 5m intervals. Where samples were dry, analytical composites were formed by spear sampling, using a 50mm diameter plastic pipe pushed through the drill cuttings in the sample retention bag to the base of the bag. The pipe is removed carefully with the contents of the pipe containing a representation of the retained metre. Wet RC drill samples were thoroughly mixed in the sample retention bag and 'scoop' sampled to form a 5m composite sample. HQ diamond core was cut into halves and sampled on geological boundaries, to a minimum of 20cm samples or on a metre basis on site. The diamond core was cut using a diamond saw, with half core being submitted to the laboratory for analysis and the other stored. Field samples were taken for RAB, RC and diamond core samples at a rate of 1 in 20. Composite analytical samples returning values greater than 0.1 g/t Au were re-sampled at 1m intervals. Monarch Gold Mining Company Ltd; Drill hole samples were collected at 4m and 3m composite intervals. All samples at ALS Kalgoorlie were sorted, dried, split via a riffle splitter using the standard splitting procedure laboratory Method Code SPL-21, pulverised in a ring mill using a standard low chrome steel ring set to >85% passing 75 micron. If sample was >3 kg it was split prior to pulverising and the remainder retained or discarded. A 250g representative split sample was taken, the remaining residue sample stored and a 50gm sample charge was taken for analysis. All samples at Ultra Trace Pty Ltd were sorted, dried, a 2.5 – 3kg sample was pulverized using a vibrating disc, was split into a 200-300g subsample and the residue sample stored. A 40gm charge was taken for analysis. Composite samples returning anomalous values were sampled at 1m intervals using a scoop. For both RC and RAB drilling a duplicate sample was collected at every 25th sample, and a standard sample was submitted every 20th sample. Pancontinental Mining Ltd; RC samples were collected in plastic bags directly from the cyclone at 1m intervals, split twice through a sample splitter before splitting off a 2kg sample for analysis. Samples were crushed to 1mm, 1kg split taken and pulverised to 90% minus 20 mesh from which a 50gm aliquot was taken. Field samples were taken at a rate of 1 in 10 and results show a good correlation with the original values. Samples sent to SGS were dried, jaw and roll crushed, split and pulverised in a chromium steel mill. Consolidated Gold N.L/DPPL; Auger samples were collected at a nominal depth of 1.5m or blade refusal. Approximately 200gm of material was placed into pre-numbered paper geochemical bags. Sample numbers were entered into a datalogger linked to the GPS unit to ensure accuracy. RAB samples were collected at 1m intervals and used to create a 4m composite sample. Samples were oven dried, pulverised in a single stage grinding bowl until about 90% of the material passed 75 micron. A 50gm split sample was taken for analysis. Composite samples returning values greater than 0.19 Au g/t were sampled at 1m intervals. Riverina Resources Pty Ltd; Auger soil samples were collected from a depth of 1.8m or blade refusal. RAB and RC 4m composites were taken using a sample spear. Samples were dried, crushed, split, pulverised and a 50gm charge taken. Composite samples returning anomalous gold values were sampled at 1m intervals using a sample spear. Barra Resources Ltd; Every metre of the drilling was collected through a cyclone into a large green plastic bag and lined up in rows near the hole in rows of 20. The entirety of each hole was sampled. Each hole was initially sampled by 4m composites using a spear or scoop. Once each hole was logged, intervals considered to be geologically significant were re-sampled at 1m intervals. To obtain a representative sample, the entire 1m sample was split using a riffle splitter into a calico bag. Whole diamond core samples for ore zones were sampled. Samples greater than 2.5kg were riffle split to <2.5kg using a Jones riffle splitter. The entire sample was then pulverised in a Labtechnics LM5 to better than 85% passing 75 microns. A 50gm pulp was taken for assaying in appropriately numbered satchels. Composite samples that returned gold assays greater than 0.1 g/t Au and that had not been previously sampled at 1m intervals, were re-sampled at 1m intervals. In addition, any highly anomalous 1m samples were also sampled again to confirm their assay results.

		<ul style="list-style-type: none"> Greater Pacific Gold; Sample preparation for RC and core sample unknown. Carpentaria Exploration Company Pty Ltd; Samples were collected over 1m intervals. 2m and 4m composite samples were collected using a sample spear. About 2kg samples were despatched for analysis. Samples were dried, crushed, split, pulverised and a charge taken for analysis. Malanti Pty Ltd; 1m samples were collected in plastic bags via a cyclone and passed through a triple splitter giving a 12.5% split of about 2kg which was placed in a calico bag and marked with the drill hole number and interval sampled. The 87.5% was returned to the similarly numbered large plastic bag and laid in rows on site. A trowel was used to scoop the samples for composites over 4m and 6m intervals. Samples for assay were then taken with composite intervals based on geology. Many of the single splits were selected for assay in the first instance. Samples packed in poly weave bags were freighted for analysis. Samples were dried, crushed, split, pulverised and a 50gm charge taken. RC Samples with anomalous composite assays were split and submitted for analysis. Riverina Gold Mines NL; Vacuum hole samples were collected every metre and split. RAB samples were taken every metre through a cyclone and riffle split to a quarter and composited to 4m intervals. RC samples were taken every metre through a cyclone after being riffle split to a quarter and some composited to 4m. The residue remained on site in plastic bags whilst the quarter split was sent for analysis. For vacuum holes RVV70 to RVV125, a 30grm was taken. RC samples from holes RV110 to RV164 and vacuum hole samples were dried, crushed to nominal 3mm and a 1,000 gram split was taken for pulverising until 90% passed minus 75 microns. A 25grm charge was taken. RC samples from holes RV230 to RV350 were totally pulverised and a 50 grm charge taken. 4m RAB composite samples returning anomalous values greater than 0.1 g/t Au were sampled at 1m intervals. Riverina Gold NL; RAB samples were bulked at 2m intervals. RC holes were sampled at 1m intervals. Diamond core samples were taken at geological boundaries. Samples were crushed, split, pulverised and a charge taken for analysis. Ora Banda Mining Limited (OBM) – RC samples were submitted either as individual 1m samples taken onsite from cone splitter or as 4m composite samples speared from the onsite drill sample piles. Half core samples, cut by saw. Core sample intervals selected by geologist and defined by geological boundaries. For drilling up to April 2020, RC samples were dried, crushed, split, pulverised and a 50gm charge taken. For drillholes RVRC20036 to RVRC20104 inclusive, 1m and 4m composite samples were despatched to the lab, crushed to a nominal 3mm, split to 500 grams and analysed by Photon Assay method at MinAnalytical in Kalgoorlie. 4m composite samples with gold values greater than 0.2 g/t Au were re-sampled as 1m split samples and submitted to the lab for Photon Assay analysis. For all drilling in 2022, - RC samples were submitted either as individual samples taken from the onsite cone splitter or as four metres composite samples taken by metal scoop. Core sample intervals selected by geologist and defined by geological boundaries, cut by saw and submitted as half core. All samples were despatched to the SGS laboratory at the Davyhurst site for pulverising. Prepared samples were then despatched to SGS laboratories in Kalgoorlie for a 50g charge Fire Assay (GO_FAP50V10) MP-AES finish. Field duplicates, blanks and standards were submitted for QAQC analysis. Underground diamond drilling – Core sample intervals selected by geologist and defined by geological boundaries, selected holes cut by saw and submitted as half core and remainder of holes are whole-core sampled. All samples were despatched to the SGS laboratory at the Davyhurst site for crushing and pulverising. Prepared samples were then despatched to SGS laboratories in Kalgoorlie for a 50g charge Fire Assay (GO_FAP50V10) MP-AES finish. Flushes, blanks and standards were submitted for QAQC analysis. Underground face samples as per diamond drilling, including field duplicates, rock chip samples taken via hammer sampling per geology domain. Repeat assays were undertaken on pulp samples at the discretion of the laboratory.
<p>Quality of assay data and laboratory tests</p>	<ul style="list-style-type: none"> <i>The nature, quality and appropriateness of the assaying and laboratory procedures used and whether the technique is considered partial or total.</i> <i>For geophysical tools, spectrometers, handheld XRF instruments, etc, the parameters used in determining the analysis including instrument make and model, reading times, calibrations factors applied and their derivation, etc.</i> <i>Nature of quality control procedures adopted (eg standards, blanks, duplicates, external</i> 	<ul style="list-style-type: none"> Croesus Mining N.L; Auger samples were sent to Ultratrace Laboratories, Perth, to be assayed for gold using the Aqua Regia method with a detection limit of 1ppb. RAB, aircore, RC and diamond samples were sent to Ultratrace Laboratories in Perth to be analysed for gold using Fire assay/ICP Optical Spectrometry. Diamond core check samples were analysed at Genalysis of Perth. Some diamond core samples were also analysed for platinum and palladium by fire assay. Monarch Gold Mining Company Ltd; RC samples were sent to ALS Kalgoorlie to be analysed gold by fire assay (lab code Au-AA26). This was completed using a 50grm sample charge that was fused with a lead concentrate using the laboratory digestion method FA-Fusion and digested and analysed by Atomic Absorption Spectroscopy against matrix matched standard. RC samples were also sent to Ultra Trace Pty Ltd, Canning Vale Western Australia for gold analysis by lead collection fire assay. Samples were also analysed for palladium and platinum. The Quality control at ALS involved 84 pot fire assay system. The number and position of quality control blanks, laboratory standards and repeats were determined by the batch size. Three repeat samples were generally at position 10, 30, 50 of a batch and the control blanks (one blank) at the start of a batch of 84 samples. The laboratory standards were inserted

laboratory checks) and whether acceptable levels of accuracy (ie lack of bias) and precision have been established.

randomly and usually two certified internal standards were analysed with a batch, but it was at the discretion of the 'run builder' as to how many standards to add to the batch and where to place them in the run. QAQC at Ultra Trace Pty Ltd was undertaken for every 27th sample. At random, two repeat samples were chosen, one laboratory standard was inserted and one check sample was taken. The check sample was chosen if the first pass of fire assay shows anomalous value.

- Pancontinental Mining Ltd; Samples were sent to Genalysis Laboratory Services Pty Ltd in Perth to be analysed for gold with a detection limit of 0.01 ppm. They were also analysed for gold at SGS laboratory using aqua regia with AAS finish. A number of samples with an assay greater than 0.2 ppm were re-assayed by fire assay. Laboratory standards indicated reasonable accuracy.
- Consolidated Gold N.L./DPPL; Auger samples were submitted to ALS Pty Ltd in Perth to be analysed for gold to a detection limit of 0.001ppm using ALS's PM2005 graphite furnace/AAS technique. Samples were also analysed for calcium, magnesium and arsenic using ALS's IC205 technique. RAB samples were submitted to Minlab Pty Ltd Kalgoorlie to be analysed for gold by fire. Some samples were also sent to Amdel Laboratories Ltd Kalgoorlie for gold analysis by fire assay method FAI.
- Riverina Resources Pty Ltd; Auger soil samples were sent to Ultra Trace in Perth to be analysed for gold and arsenic using an aqua regia digest and determination by ICP-MS. RC samples were submitted to Kalgoorlie Assay Laboratory for gold analysis by 50gm fire assay. Samples from holes GNRC012 to GNRC020 were also sent Kalgoorlie Assay Laboratory for gold and nickel analysis using a four-acid digest and gold analysis by 50g fire assay. Martin Zone samples were to Kalgoorlie Assay Laboratories to be assayed Ni, Co, Cr, Cu, Mg, Mn, Fe, S, As, Al, Ca, and Zn using a four acid digest with ICP-OES finish and for Au using a 50gm fire assay digest with flame AAS finish. Some samples were also sent to Ultra Trace in Perth for analysis. 312 end of hole RAB samples from the Forehand Prospect were sent to AusSpec International in Sydney for HyChips spectral analysis developed by AusSpec International and CSIRO capable of analysing dry samples stored in chip trays at a rate of at least 1,600 per day. This was undertaken to identify alteration minerals, weathered clays, Fe oxides, and weathering intensity as well as sample mineralogy including mineral crystallinity and mineral composition. (Results are in appendix 4 of Riverina Project Combined ATR 2006.pdf). Down Hole Electro-Magnetic (DHEM) surveys were conducted in RC drill holes GNRC001, GNRC003 and GNRC004 and three diamond drill holes. These surveys were completed by Outer Rim Exploration Services using a Crone Pulse EM probe. (Southern Geoscience Consultants were contracted to plan the DHEM surveys and interpret the results).
- Barra Resources Ltd; Auger samples were sent to Ultra Trace Analytical Laboratories in Perth to be analysed for gold and arsenic. Gold was determined by Aqua Regia with ICP-Mass Spectrometry to a detection limit of 0.2ppb. All RC pulp samples were sent to Kalgoorlie Assay Laboratories or Australian Laboratory Services Pty Ltd (ALS) in Kalgoorlie for gold analysis. Gold analysis was completed using the 50gm fire assay technique with an AAS finish to a detection limit of 0.01ppm. Each was weighed and data captured, with the charge then intimately mixed with flux. Mixed sample and flux were fused in a ceramic crucible at 1100° C in a reducing furnace. Molten mass was then poured into moulds and allowed to cool. Lead button removed and placed in a cupellation furnace. The resultant dore bead was parted and digested, being made up to volume with distilled water. The analyte solution was aspirated against known calibrating standards using AAS. All diamond core sample pulps were sent to Leonora Laverton Assay Laboratory Pty Ltd to be assayed for gold by fire with an AAS finish to a detection limit of 0.01ppm Au. Some drill hole samples were analysed for gold (Fire assay/ICP Optical Spectrometry) by Ultratrace Laboratories in Perth.
- Greater Pacific Gold; 1m RC samples submitted to Analabs for Au, Ag, Cu, Pb, Zn, As and Ni analysis. Core samples submitted to Genalysis for Au, Ag, Cu, Pb, Zn, As and Ni analysis. Ore zone samples submitted to Minlab for re-assay. Screen fire assay performed on ore zone pulps.
- Carpentaria Exploration Company Pty Ltd; Samples were sent to Australian Assay Laboratories Group in Leonora to be analysed for gold with a detection limit of 0.01 g/t Au by fire assay. Repeat assays undertaken for about 1 sample in 20. Field duplicates and standards routinely submitted with assay batches.
- Malanti Pty Ltd; RC samples from RRC1 to RRC7 holes were sent to Aminya Laboratories Pty Ltd, Ballarat, Victoria, to be analysed for gold by fire assay with a detection limit of 0.01 g/t Au. RC samples from holes RRC8 to RRC12 submitted to Minesite Reference Laboratories, Wangara, Western Australia to be analysed for gold by Fire Assay of 50g charge (code FA50) with a 0.01ppm lower detection limit. About 1 in 20 assays was either a repeat or duplicate.
- Riverina Gold Mines NL; RC samples from holes RV110 to RV164 and vacuum hole samples were sent to Leonora Laverton Assay Laboratory Pty Ltd, Leonora, to be analysed for gold. The charge was dissolved in aqua-regia/solvent digest with a double ketone backwash and then assayed using AAS techniques with a detection limit of 0.02ppm. RC samples from holes RV230 to RV350, vacuum samples from holes RWV126 to RWV204 and RAB composite samples were sent to Multilab Pty Ltd in Kalgoorlie to be analysed for gold. The 50grm samples were digested in aqua regia and assayed by AAS techniques with a detection limit of

		<p>0.01ppm. Other RC samples were sent to Minlab in Perth to be analysed for gold using the aqua regia digest and AAS finish. For vacuum and RAB samples, about 1 in 10 assays was a repeat. For RC holes from RV110 to RV164 and vacuum holes, at least 10 percent of a bulk order was repeated as a laboratory duplicate for quality control.</p> <ul style="list-style-type: none"> • Riverina Gold NL; RAB samples were analysed for gold, silver, arsenic, lead, zinc, copper and nickel. RC samples were despatched to Genalysis to be analysed for gold by Aqua Regia/ AAS method. Diamond samples were set to Analabs in Kalgoorlie to be analysed for gold by fire with fusion AAA, copper, lead and silver by ASS with perchloric acid digestion and, arsenic by ASS with vapour generation and density using an air pycnometer. • Ora Banda Mining Limited (OBM) – Up to April 2020, all samples were sent to an accredited laboratory (Nagrom Laboratories in Perth, Intertek-Genalysis in Kalgoorlie or SGS in Kalgoorlie). The samples have been analysed by firing a 50gm portion of the sample. This is the classical fire assay process and will give total separation of gold. An ICPOES finish is used. Commercially prepared standard samples and blanks are inserted in the sample stream at a rate of 1:12. Sizing results (percentage of pulverised sample passing a 75µm mesh) are undertaken on approximately 1 in 40 samples. The accuracy (standards) and precision (repeats) of assaying are acceptable. For drillholes RVRC20036 to RVRC20104, 1m and 4m composite RC samples were sent to MinAnalytical Laboratory Services in Kalgoorlie. Sample prep involves drying and a -3mm crush, of which 500 grams is linear split into assay jars for analysis. Samples are analysed by the Photon assay method which utilises gamma radiation to excite the nucleus of the target atoms (gold). The excited nucleus then emits a characteristic photon, which is counted to determine the abundance of gold in the sample. For all drilling in 2022, All samples were sent to the accredited onsite SGS laboratory at Davyhurst for sample preparation. Prepared samples were then despatched to SGS laboratories in Kalgoorlie for a 50g charge Fire Assay (GO_FAP50V10) with MP-AES finish. Commercially prepared standard samples and blanks are inserted in the sample stream at an average rate of 1:25. Sizing results (percentage of pulverised sample passing a 75µm mesh) are undertaken on approximately 1 in 20 samples. The accuracy (standards) and precision (repeats) of assaying are acceptable. Standards and blanks were inserted into the sample stream at a rate of approximately 1:12. Duplicates were submitted at a rate of approximately 1:30. The accuracy (standards) and precision (repeats) of assaying are acceptable. Underground diamond drilling – All samples were sent to the accredited onsite SGS laboratory at Davyhurst for sample preparation. Prepared samples were then despatched to SGS laboratories in Kalgoorlie for a 50g charge Fire Assay (GO_FAP50V10) with MP-AES finish. Commercially prepared standard samples and blanks are inserted in the sample stream at an average rate of 1:20. Sizing results (percentage of pulverised sample passing a 75µm mesh) are undertaken on approximately 1 in 20 samples. The accuracy (standards) and precision (repeats) of assaying are acceptable. The accuracy (standards) and precision (repeats) of assaying are acceptable. Face samples assayed as per diamond core, including a field duplicate per face. • Fire assay is considered a total technique, Aqua Regia is considered partial. The Photon assay method is considered a total technique and is non-destructive.
<p>Verification of sampling and assaying</p>	<ul style="list-style-type: none"> • <i>The verification of significant intersections by either independent or alternative company personnel.</i> • <i>The use of twinned holes.</i> • <i>Documentation of primary data, data entry procedures, data verification, data storage (physical and electronic) protocols.</i> • <i>Discuss any adjustment to assay data.</i> 	<ul style="list-style-type: none"> • Holes are not deliberately twinned. • Monarch Gold Mining Company Ltd; Geological and sample data was logged digitally and .csv or .xls files imported into Datashed SQL database with in-built validation. Samples bags were put into numbered plastic bags and then cable tied. Samples collected daily from site by laboratory. • OBM - Geological and sample data logged directly into field computer at the drill rig or core yard using Field Marshall or Geobank Mobile. Data is transferred to Perth via email or through a shared server and imported into Geobank SQL database by the database administrator (DBA). Assay files are received in .csv format and loaded directly into the database by the DBA. Hardcopy and/or digital copies of data are kept for reference if necessary. • Data entry, verification and storage protocols for remaining operators is unknown. • No adjustments have been made to assay data.
<p>Location of data points</p>	<ul style="list-style-type: none"> • <i>Accuracy and quality of surveys used to locate drill holes (collar and down-hole surveys), trenches, mine workings and other locations used in Mineral Resource estimation.</i> • <i>Specification of the grid system used.</i> • <i>Quality and adequacy of topographic control.</i> 	<ul style="list-style-type: none"> • Croesus Mining N.L; All drilling was located using a Trimble/Omnistar DGPS with an accuracy of plus or minus 1m. Down hole surveys were either as planned or taken using electronic multi shot camera. The grid system used is AGD 1984 AMG Zone 51. • Monarch Gold Mining Company Ltd; The collar co-ordinates of aircore and RAB holes and RC holes RMRC001 to RMRC085 were surveyed using GPS. The co-ordinates of holes RMRC086 to RMRC177 were surveyed using the RTKGPS. All surveying was undertaken by staff of Monarch Gold Mining Company Ltd. Down hole surveys were undertaken every 5m by Ausmine using electronic multi-shot (EMS). The grid system used is GDA94 MGA Zone 51.

		<ul style="list-style-type: none"> • Pancontinental Mining Ltd; RC drilling at Mulwarrie was surveyed by McGay Surveys. The grid system used is AMG Zone 51. RAB drilling at Riverina South – holes drilled on local Riverina grid and transformed to MGA using 2 point transformation. Holes were not routinely downhole surveyed. • Consolidated Gold N.L./DPPL; Auger holes located on AMG grid. Some RAB holes were drilled on an AMG grid installed by Kingston Surveys Pty Ltd of Kalgoorlie. Each 40m grid peg had an accurate (plus or minus 10 cm) northing, easting and elevation position. Other RAB holes drilled on local grid. Holes located using compass and hip chain from surveyed baselines. The grid system used is AMG Zone 51. RAB holes not down hole surveyed. • Riverina Resources Pty Ltd; Collar co-ordinates were surveyed using a DGPS. Collar azimuth and inclination were recorded. Downhole surveys for most GNRC holes were by single shot and on rare occasions by gyro. Diamond holes surveyed by electronic multishot. The grid system used is AGD 1984 AMG Zone 51. • Barra Resources Ltd; Collar co-ordinates for northings, eastings and elevation have been recorded. Collar azimuth and inclination were recorded. Drill hole collar data was collected by the First Hit mine surveyor and down hole data was collected by the drilling company and passed onto the supervising geologist. The grid system used is AGD84 Zone 51. • Greater Pacific Gold; Collars surveyed on Riverina local Mine grid. 2 point grid transformation translates coordinates into MGA91 zone 51. Holes downhole surveyed by gyro (Ace Drilling). • Carpentaria Exploration Company Pty Ltd; A local Riverina South grid was employed to record collar coordinates. Holes were not downhole surveyed. Local co-ordinates were transferred to the AMG and MGA grids using a 2-point transformation. • Malanti Pty Ltd; Collar locations of re-sampled RAB holes were noted using a GPS. Holes were not downhole surveyed. Two grid systems were employed; a local Riverina grid and AGD 1996 AMG Zone 51. Local co-ordinates were transferred to the AMG and MGA grids using a 2-point transformation. • Riverina Gold Mines NL; Collar co-ordinates for northings and eastings and have been recorded. Collar inclination was recorded. The grid used was the Riverina grid which is oriented to true north. The origin for this grid is 10,000N, 10,000E located at the south west corner of surveyed M30/98. • Riverina Gold NL; For diamond holes, down hole surveys were either assumed or taken using an Eastman camera or gyro. Diamond hole locations surveyed on Riverina local grid. RC and RAB holes located on surveyed Riverina local grid. • Topography has been surveyed by recent operators. Collar elevations are consistent with surrounding holes and the natural surface elevation. • Ora Banda Mining Limited (OBM) (RC, DD) MGA94, zone 51. Drill hole collar positions were picked up by a contract surveyor using RTKGPS subsequent to drilling. Drill-hole, downhole surveys are recorded every 30m using a reflex digital downhole camera. Some RC holes not surveyed if holes short and/or drilling an early stage exploration project. Diamond drillholes completed in 2019 and 2020 by OBM were surveyed using a Gyro tool. For all drilling in 2022 Drill hole collar positions were picked up by an OBM mining surveyor using RTKGPS subsequent to drilling. All downhole surveys were taken every 10m by Gyro. Underground diamond drilling – diamond drilling collar locations picked up by mine surveyors via theodolite and known survey control points. UG diamond drill rig alignment via surveyed collar locations and DeviAligner tool, downhole surveys via DeviGyro-Ox tool. Underground face sample locations measured via laser distometer to known surveyed control points and development surveys via theodolite.
<p>Data spacing and distribution</p>	<ul style="list-style-type: none"> • <i>Data spacing for reporting of Exploration Results.</i> • <i>Whether the data spacing and distribution is sufficient to establish the degree of geological and grade continuity appropriate for the Mineral Resource and Ore Reserve estimation procedure(s) and classifications applied.</i> • <i>Whether sample compositing has been applied.</i> 	<ul style="list-style-type: none"> • Exploration results are reported for single holes only. • Drill hole spacing is adequate for the current resources reported externally. (Examples are discussed below) • Croesus Mining N.L.; Auger samples were collected to infill a 250m x 100m grid, Riverina South RAB samples were collected to infill a 400m x 80m grid and Sunraysia RC drilling was completed on a 40m x 200m grid. • Monarch Gold Mining Company Ltd; RAB holes were drilled on 200m x 40m grids and RC holes were drilled on a 20m x 20m and 40m x 20m grids. • Riverina Resources Pty Ltd; Auger soil sampling program was taken over 50m x 50m, 50m x 100m and 50m x 200m spaced grids, Silver Tongue RAB and RC holes were drilled on 25m x 25m, 25m x 50m and 50m x 50m spaced grids and Corporate James RAB holes were drilled on 50m x 100m and 25m x 100m spaced grids. • Barra Resources Ltd; Auger soil sampling program was taken over 50m x 50m, 50m x 100m and 50m x 200m spaced grids, Silver Tongue RAB and RC holes were drilled on 25m x 25m, 25m x 50m and 50m x 50m spaced grids, Corporate James RAB holes were

		<p>drilled on 50m x 100m and 25m x 100m spaced grids, Forehand RAB and RC holes were drilled on 50m x 100m, 50m x 50m or 25m x 50m spaced grids and Cactus RC holes were drilled on 10m x 10m, 20m x 20m and 40m x 50m spaced grids.</p> <ul style="list-style-type: none"> • Ora Banda Mining Limited (OBM) – underground diamond drilling – typical spacing for grade control purposes is 20m x 20m. Underground face samples are taken each 3m/4m ore development cut. • Drill intercepts are length weighted, 1.0g/t lower cut-off, not top-cut, maximum 2m internal dilution.
Orientation of data in relation to geological structure	<ul style="list-style-type: none"> • <i>Whether the orientation of sampling achieves unbiased sampling of possible structures and the extent to which this is known, considering the deposit type.</i> • <i>If the relationship between the drilling orientation and the orientation of key mineralised structures is considered to have introduced a sampling bias, this should be assessed and reported if material.</i> 	<ul style="list-style-type: none"> • Drilling was oriented at 90° to the strike of mineralisation and inclined at 60°. Examples are discussed below. • Croesus Mining N.L.; Holes were either vertical or inclined at 60° and oriented towards the west. • Monarch Gold Mining Company Ltd; Holes were inclined at 60° and oriented towards the west. • Consolidated Gold N.L./DPPL; Holes were inclined at 60° and oriented towards either the west or east. • Riverina Resources Pty Ltd; Holes were inclined at 60° and oriented towards either the west or east. • Barra Resources Ltd; Holes were either vertical or inclined at 60° and oriented towards the west. • Greater Pacific Gold; Holes drilled to the east inclined at -58 to -60. Suitable for sub vertical N-S striking mineralisation. • Carpentaria Exploration Company Pty Ltd; Holes were inclined at 60° and oriented towards either the west or east. • Malanti Pty Ltd; Holes were inclined at 60° and oriented towards either the west or east. • Riverina Gold Mines NL; Vacuum holes from RWV1 to RWV69 and from RWV126 to RWV204 were drilled vertically. Vacuum holes from RWV70 to RWV125 were inclined at 60° and oriented either east or west. RAB and RC holes were inclined at 60° and oriented either east or west. • Riverina Gold NL; RC holes were inclined at 60° and oriented either east or west. • Ora Banda Mining Limited (OBM) – RC drilling is predominately inclined at between -50 and -60 degrees towards the west. Drilling inclined to the east is only done when lodes are deemed to be vertical or if local landforms prevent access. Underground diamond drilling – collared from decline cuddies in sub-horizontal and inclined fans cutting across sub-vertical lodes, holes are designed to optimise intersection angles and reduce bias for Main Lode East and West. Some bias is present for the Murchison lodes, given their close proximity to the drill cuddies and this impact is mitigated through detailed wall/back mapping of Murchison lode intersections in underground workings and future targeted grade control drilling
Sample security	<ul style="list-style-type: none"> • <i>The measures taken to ensure sample security.</i> 	<ul style="list-style-type: none"> • Unknown for all drilling except for the following; • Barra Resources Ltd. Samples received at the laboratory were logged in ALS Chemex's unique sample tracking system. A barcode was attached to the original sample bag. The label was then scanned and the weight of sample recorded together with information such as date, time, equipment used and operator name. • Monarch; Sample calicos were put into numbered plastic bags and cable tied. Any samples that going to SGS were collected daily by the lab. Samples sent to ALS were placed into sample crates and sent via courier on a weekly basis. • OBM - Samples were bagged, tied and stored in a secure yard on site. Once submitted to the laboratories they are stored in cages within a secure fenced compound. Samples are tracked through the laboratory via their LIMS.
Audits or reviews	<ul style="list-style-type: none"> • <i>The results of any audits or reviews of sampling techniques and data.</i> 	<ul style="list-style-type: none"> • OBM has reviewed historic digital data and compared it to hardcopy and digital (Wamex) records, noting that no issues were found.

Section 1 Sampling Techniques and Data – Sand King

Information for historical (Pre Ora Banda Mining Limited from 1980's to 2010) drilling and sampling has been extensively viewed and validated where possible. Information pertaining to historical QAQC procedures and data is incomplete but of a sufficient quality and detail to allow drilling and assay data to be used for resource estimations. Further Ora Banda Mining Limited has undertaken extensive infill and confirmation drilling which confirm historical drill results. Sections 1 and 2 describe the work undertaken by Ora Banda Mining Limited and only refer to historical information where appropriate and/or available.

Criteria	JORC Code explanation	Commentary
Sampling techniques	<ul style="list-style-type: none"> Nature and quality of sampling (eg cut channels, random chips, or specific specialised industry standard measurement tools appropriate to the minerals under investigation, such as down hole gamma sondes, or handheld XRF instruments, etc). These examples should not be taken as limiting the broad meaning of sampling. Include reference to measures taken to ensure sample representivity and the appropriate calibration of any measurement tools or systems used. Aspects of the determination of mineralisation that are Material to the Public Report. In cases where 'industry standard' work has been done this would be relatively simple (eg 'reverse circulation drilling was used to obtain 1 m samples from which 3 kg was pulverised to produce a 30 g charge for fire assay'). In other cases more explanation may be required, such as where there is coarse gold that has inherent sampling problems. Unusual commodities or mineralisation types (eg submarine nodules) may warrant disclosure of detailed information. 	<ul style="list-style-type: none"> Goldfields Group; Auger holes were drilled to a maximum depth of 1.5m. RC samples were routinely collected at 1m intervals. Diamond drill core samples were taken at geological boundaries and sawn in half. Samples pulverised at laboratory. Monarch Gold Mining Company Ltd; RAB samples were collected at 2m and 4m composites via a scoop method at 1m intervals. RC samples were collected at 1m, 2m to 5m intervals. 1m samples were riffle split. WMC; In early drilling by WMC, samples were "panned" for visible gold. Percussion samples were collected at 1m intervals, split in the field. Diamond core samples were cut in half or quartered. Gilt Edged Mining NL; All RAB and RC holes were collected through a cyclone and sampled at 1m intervals, pipe or spear sampled, composited over 5m intervals. The composite samples weighing about 3kg were despatched for analysis. 5m composites with assays greater than 0.2 g/t Au were resampled by riffle-splitting the whole of each 1m sample down to about 3kg prior to being despatched for analysis. Siberia Mining Corporation Ltd; RAB samples were collected at 1m intervals from the drill hole collar using a plastic bucket and laid on the ground. A scoop sample was taken from each sample to form a 5m composite. RC samples were collected at 1m intervals and passed through a cyclone and split using a two tiered, 75:25 riffle splitter. The split sample (approximately 2-3kg) was stored in a drawn calico bag, which was then placed next to the split sample reject (approximately 10-15kg), which was contained in UV resistant PVC bags. A representative scoop sample was then taken from each split sample reject bags to form a 4m composite sample. Diamond half core sampled at 1m intervals. Ora Banda Mining; RC samples were routinely collected at 1m intervals and cone split. RC samples are collected at 1m intervals in calico bags directly from a cone splitter. Sample size of at least 2kg is targeted. Diamond drilling. Core sample intervals selected by geologist and defined by geological boundaries. All samples were dispatched to the SGS laboratory at the Davyhurst site for pulverising. Prepared samples were then despatched to SGS laboratories in Kalgoorlie for a 50g charge Fire Assay.
Drilling techniques	<ul style="list-style-type: none"> Drill type (eg core, reverse circulation, open-hole hammer, rotary air blast, auger, Bangka, sonic, etc) and details (eg core diameter, triple or standard tube, depth of diamond tails, face-sampling bit or other type, whether core is oriented and if so, by what method, etc). 	<ul style="list-style-type: none"> Goldfields Group; Auger holes were using an auger rig on the back of a Toyota Landcruiser from Snap Drilling. RC holes were drilled by Western Diamond Drillers using a Schramm Rig. Diamond holes were drilled by Mundy Drilling services using a KL1200 rig. Diamond holes were oriented. Monarch Gold Mining Company Ltd; RC holes were drilled by Kennedy Drilling using a 4 inch blade. WMC; RC percussion holes were drilled using a Schramm Rig. RC holes were drilled using blades and hammer. The RC drilling diameter is unknown. Diamond drill holes for NQ core were drilled and reduced to BQ core at depth if necessary. Some diamond holes commenced with a percussion pre-collar. Diamond core generally not oriented. Gilt Edged Mining NL; RC holes were drilled by either Sing Drilling or McKay Drilling. Both Kalgoorlie companies used a booster and auxiliary compressor. The RC drilling diameter is unknown. Siberia Mining Corporation Ltd; RAB holes were drilled by ProDrill Pty Ltd of Kalgoorlie using an open hole RAB drill rig. All holes were drilled dry. RC holes were drilled by Premium Drilling Pty Ltd of Kalgoorlie using a 350/750 Schram RC drill rig and a 5.25" face sampling hammer. An auxiliary booster was used on holes deeper than 75m. EGL; RC drilling using 5.25 inch face sampling hammer. PQ, HQ and NQ diamond core. PQ drilled from surface until fresh rock encountered, then changed to NQ for geotechnical holes. Resource holes drilled HQ from surface to fresh rock, then changed to NQ. Ora Banda Mining Limited – 5.5 – 5.625 inch diameter RC holes using face sampling hammer with samples collected under cone splitter.

Criteria	JORC Code explanation	Commentary
		Core holes have RC pre-collars, then NQ ₂ , HQ ₃ or PQ ₃ coring to BOH. All core oriented by Axis instrument. RC grade control rig is 5.5 inch diameter hammer with samples collected from a rig mounted cone splitter into calico bags which are submitted for assay. GC Drilling was carried out by Australian Surface Drill Contractors, Rock on Ground, Orlando Drilling and JDC Drilling.
Drill sample recovery	<ul style="list-style-type: none"> Method of recording and assessing core and chip sample recoveries and results assessed. Measures taken to maximise sample recovery and ensure representative nature of the samples. Whether a relationship exists between sample recovery and grade and whether sample bias may have occurred due to preferential loss/gain of fine/coarse material. 	<ul style="list-style-type: none"> Quantitative auger, RAB and RC drill recoveries were not recorded by Goldfields Group, Monarch Gold Mining Company Ltd, WMC, Gilt Edged Mining NL, Siberia Mining Corporation, Maitland Mining NL, Newcrest Mining Ltd, Julia Mines NL, Placer Dome Asia Pacific Ltd, Goongarrie Gold Pty Ltd, Australian Consolidated Equities Ltd, Centaur Mining and Exploration Ltd, EGL, Britannia Gold NL, Glengarry Resources NL, Sundowner Minerals NL and Gutnick Resources NL. EGL - Diamond drill recoveries are recorded as a percentage calculated from measured core against downhole drilled intervals (core blocks). RC sample recoveries not recorded. Ora Banda Mining Limited – RC drilling recoveries, including Grade control RC were recorded on a pre metre basis based on sample size. Diamond Core recoveries are very high due to the competent ground. Any core recovery issues are noted on core blocks and logged. Diamond drill recoveries are recorded as a percentage calculated from measured core against downhole drilled intervals (core blocks). There is no known relationship between sample recovery and grade.
Logging	<ul style="list-style-type: none"> Whether core and chip samples have been geologically and geotechnically logged to a level of detail to support appropriate Mineral Resource estimation, mining studies and metallurgical studies. Whether logging is qualitative or quantitative in nature. Core (or costean, channel, etc) photography. The total length and percentage of the relevant intersections logged. 	<ul style="list-style-type: none"> Goldfields Group; Qualitative: colour, oxidation, hardness, shearing, texture, grain size, rock, alteration, minerals and Quantitative: alteration intensity, mineralisation intensity, structure intensity, vein percent. Monarch Gold Mining Company Ltd; Qualitative: colour, oxidation, hardness, shearing, texture, grain size, rock, alteration, minerals. Quantitative: alteration intensity, mineralisation intensity, structure intensity, vein percent. WMC; RC and diamond logging describes the dominant and minor rock types, mineralisation, oxidation, alteration, texture, vein type and basic structure. Quantitative values assigned to amounts of sulphides, alteration and veining. Gilt Edged Mining NL; Qualitative: rock code, alteration, sulphides, weathering. Siberia Mining Corporation Ltd; Qualitative: alteration, colour, lithology, oxidation, mineralogy, vein style, vein assemblage, remarks. Quantitative: mineralisation intensity. EGL; Qualitative: alteration, colour, grain size, lithology, oxidation, mineralogy, structure, texture, vein style, vein assemblage, remarks. Quantitative: mineralisation intensity, vein percent. Ora Banda Mining Limited – Field logging was conducted using Geobank MobileTM software on Panasonic Toughbook CF-31 ruggedized laptop computers. Qualitative logging: Lithology, colour, oxidation, grainsize, texture, structure, hardness, regolith. Quantitative: estimates are made of quartz veining, sulphide and alteration percentages. Core photographed both wet and dry. Magnetic susceptibility and RQD were also recorded for core holes. All holes were geologically logged in their entirety to a level of detail to support mineral resource estimation
Sub-sampling techniques and sample preparation	<ul style="list-style-type: none"> If core, whether cut or sawn and whether quarter, half or all core taken. If non-core, whether riffled, tube sampled, rotary split, etc and whether sampled wet or dry. For all sample types, the nature, quality and appropriateness of the sample preparation technique. Quality control procedures adopted for all sub-sampling stages to maximise representivity of samples. Measures taken to ensure that the sampling is representative of the in situ material collected, including for instance results for field duplicate/second-half sampling. Whether sample sizes are appropriate to the grain size of the material being sampled. 	<ul style="list-style-type: none"> Goldfields Group; RC samples were routinely collected at 1m intervals and riffle split. Diamond drill core samples were taken at geological boundaries and sawn in half. RC and diamond samples were dried, crushed, split, pulverised and a 50 gm charge taken. All sampling of resource drilling incorporated a system of standards and blanks to keep strict control on assay reliability. Monarch Gold Mining Company Ltd; RAB samples were collected at 1m intervals and 2m and 4m composites taken via a scoop method. RC samples were collected at 1m, 2m and 5m intervals. 1m samples were riffle split. Samples were prepared with a single stage mix and grind from which an assay charge was taken Composite samples with assays greater than 0.2 g/t Au were split at 1m intervals and re-analysed. Field duplicate samples were taken and analysed every 20 samples. Blanks and standards were routinely submitted with assay batches to evaluate sample preparation and assay accuracy. WMC; In early drilling by WMC, samples were "panned" for visible gold. Percussion samples were collected at 1m intervals, split in the field. Diamond core samples were cut in half or quartered. Samples were dried in fan forced ovens at 80°C for paper packets and 140°C for samples in calico bags, sieved using a nylon mesh. Oversize samples crushed in Jacques jaw crusher to produce -6mm sample, split employing either a rotary or riffle splitter and pulverised using Tema Swing mills prior to analysis, except for soil and stream sediment samples finer than 80 mesh. A 25grm charge was taken for assaying. Gilt Edged Mining NL; All RAB and RC holes were collected through a cyclone and sampled at 1m intervals, pipe or spear sampled, composited over 5m intervals. The composite samples weighing about 3kg were despatched for analysis. 5m composites with assays greater than 0.2 g/t Au were resampled by riffle-splitting the whole of each 1m sample down to about 3kg prior to being despatched for analysis. Samples were despatched to MinLab in Kalgoorlie where they were dried, pulverised to a nominal 90% minus 200 mesh (75 microns) and a 25 gm aliquot taken to be analysed for gold. Comprehensive QA/QC and check sampling reports were produced. Umpire assay checks were completed using a second laboratory (Genalysis). Siberia Mining Corporation Ltd; RAB samples were collected at 1m intervals from the drill hole using a plastic bucket and laid on the

Criteria	JORC Code explanation	Commentary
		<p>ground. A scoop sample was taken from each sample to form a 5m composite. RC samples were collected at 1m intervals and passed through a cyclone and split using a two teared, 75:25 riffle splitter. The split sample (approximately 2-3kg) was stored in a drawn calico bag, which was then placed next to the split sample reject (approximately 10-15kg), which was contained in UV resistant PVC bags. A representative scoop sample was then taken from each split sample reject bags to form a 4m composite sample. Diamond half core was sampled at 1m intervals. Samples were dried, crushed, split, pulverised until 80% passed minus 75 microns and a 50 gm charge taken. Field duplicates were submitted. Composites with assays greater than 0.2 g/t Au were re-assayed using individual 1m re-split samples.</p> <ul style="list-style-type: none"> EGL & Swan Gold; RC samples were routinely collected at 1m intervals from a cone splitter and submitted for analysis. Samples were crushed, pulverised and a 50gm charge taken for analysis. Field duplicates, blanks and standards were submitted for QAQC analysis. Diamond core in sampled at 1m intervals or to zones of geological interest. Core samples are sawn in half. Minimum sample length in NQ core or 0.3m. Ora Banda Mining Limited – RC samples were submitted as individual 1m split samples (cone splitter) or composited to 4m by PVC spear. Half-core samples, cut by automated core saw. Core sample intervals selected by geologist and defined by geological and/or mineralisation boundaries. RC samples were dried, crushed, split, pulverised and a 50gm charge taken. Field duplicates, blanks and standards were submitted for QAQC analysis. Grade control samples are prepared in the SGS on-site laboratory or at the SGS Kalgoorlie laboratory. GC samples are dried, crushed, split, pulverised and a 50gm charge taken for fire assay. Core sample intervals selected by geologist and defined by geological boundaries, cut by saw and submitted as half core. All samples were dispatched to the SGS laboratory at the Davyhurst site for pulverising. Prepared samples were then despatched to SGS laboratories in Kalgoorlie for a 50g charge Fire Assay (GO_FAP50V10) MP-AES finish. Field duplicates, blanks and standards were submitted for QAQC analysis.
<p>Quality of assay data and laboratory tests</p>	<ul style="list-style-type: none"> <i>The nature, quality and appropriateness of the assaying and laboratory procedures used and whether the technique is considered partial or total.</i> <i>For geophysical tools, spectrometers, handheld XRF instruments, etc, the parameters used in determining the analysis including instrument make and model, reading times, calibrations factors applied and their derivation, etc.</i> <i>Nature of quality control procedures adopted (eg standards, blanks, duplicates, external laboratory checks) and whether acceptable levels of accuracy (ie lack of bias) and precision have been established.</i> 	<ul style="list-style-type: none"> Goldfields Group; Auger samples were set to Analabs (Welshpool) to be assayed for gold to 1ppb by graphite furnace P605 and arsenic to 1ppm by aqua regia hydride H605. RC samples were submitted to Australian Laboratory Services (ALS) in Kalgoorlie for gold and arsenic analysis. Fire assay methods were used for gold analysis with 50gm charge, detection limit of 0.01ppm Au, while Aqua Regia methods, with detection limits of 5ppm As, were used for arsenic analysis. Diamond drill core samples were despatched to Genalysis in Kalgoorlie and analysed for gold using 50gm fire assay to 0.01ppm. A system of standards and blanks were incorporated in all sample despatches to keep a strict control on assay reliability. QA/QC re-assaying of mineralised RC intersections and interpreted structures was undertaken later in the reporting period. Monarch Gold Mining Company Ltd; Samples submitted to ALS for 50g Fire Assay with AAS finish. Samples were also analysed at Ultratrace for gold, palladium and platinum. Submitted field duplicates, blanks and standards for QAQC analysis. WMC; All samples were sent to WMC Exploration Division Kalgoorlie Laboratory to be analysed for gold using wet method, aqua regia leach, reading by AAS; a 25gm sample was digested with aqua regia, the gold extracted using aliquot DIBK and the solvent backwashed. The gold concentration was determined by Atomic Absorption. Gilt Edged Mining NL; All samples were submitted to Minlab of Kalgoorlie to be assayed for gold; 5m composites were analysed by aqua regia/AAS with a detection limit of 0.01ppm and 1m samples assayed by Fire/AAS with a detection limit of 0.01ppm. Certified reference material standards were employed. Duplicate samples, analytical standards, and check analyses at a second laboratory were used to monitor analytical quality. Siberia Mining Corporation Ltd; All samples were submitted to SGS Analabs in Kalgoorlie to be assayed for gold using 50gm Fire Assay with detection limit at 0.01ppm Au and for sulphur. Samples were also analysed at Ultratrace. Standards and repeats (1 in 20) were used during the first phase drilling campaign to provide a reference to the internal lab standards. There was a strong correlation between standard (client) and laboratory results. Repeats of composite samples showed no problems with technique or dependability with the laboratory. EGL& Swan; Samples were sent to Intertek Assay Laboratories to be analysed for gold by 50gm fire assay. Certified reference material standards were employed for a gold range of 0.32 to 48.55ppm. Blanks were also employed. Satisfactory results were obtained for both. Field duplicates were routinely taken from RC sampling. Ora Banda Mining Limited - All samples were sent to the accredited onsite SGS laboratory at Davyhurst for sample preparation. Prepared samples were then despatched to SGS laboratories in Kalgoorlie for a 50g charge Fire Assay (GO_FAP50V10) with MP-AES finish. Commercially prepared standard samples and blanks are inserted in the sample stream at an average rate of 1:25. Sizing results (percentage of pulverised sample passing a 75µm mesh) are undertaken on approximately 1 in 20 samples. The accuracy (standards) and precision (repeats) of assaying are acceptable. Standards and blanks were inserted into the sample stream at a rate of approximately 1:12. Duplicates were submitted at a rate of approximately 1:30. The accuracy (standards) and precision (repeats) of

Criteria	JORC Code explanation	Commentary
		assaying are acceptable
Verification of sampling and assaying	<ul style="list-style-type: none"> The verification of significant intersections by either independent or alternative company personnel. The use of twinned holes. Documentation of primary data, data entry procedures, data verification, data storage (physical and electronic) protocols. Discuss any adjustment to assay data. 	<ul style="list-style-type: none"> Selected drill intersections from WMC, Goldfields and Siberia Mining Corporation diamond core have been inspected by EGL/OBM geologists. Some WMC holes have been re-logged by EGL geologists and mineralisation identified at the reported intervals. Drill intersections from WMC and Goldfields diamond core were inspected by Siberia Mining Corporation geologists in 2005 and mineralization was visible in core at the expected intervals. Mineralisation widths and styles are very comparable with NQ2 drilling by SMC in 2004. Holes are not deliberately twinned. WMC; Hand written geology logs and assays were digitally captured. EGL; Data has been verified by reviewing original drill and assay logs. Print outs of computerized sample intervals and assays generated by WMC were used to verify the intercepts reported. Geological and sample data logged directly into field computer at the core yard. Data is transferred to Perth via email and imported into GBIS SQL database by the database administrator (DBA). Assay files are received in .csv format and loaded directly into the database by the DBA. Hardcopy and/or digital copies of data are kept for reference if necessary. Monarch Gold Mining Company Ltd; Geological and sample data was logged digitally and .csv or .xls files imported into Datashed SQL database with in-built validation. Ora Banda Mining Limited - Geological and sample data logged directly into field computer (Panasonic Toughbook CF-31) at the core yard or at the drill rig using Geobank Mobile. Data is exported from the logging computer, copied onto the company servers and imported into Geobank SQL database by the database administrator (DBA). Assay files are received in .csv format and loaded directly into the database by the DBA. Hardcopy and/or digital copies of data are kept for reference if necessary. Data entry, verification and storage protocols for remaining operators is unknown. No adjustments have been made to assay data.
Location of data points	<ul style="list-style-type: none"> Accuracy and quality of surveys used to locate drill holes (collar and down-hole surveys), trenches, mine workings and other locations used in Mineral Resource estimation. Specification of the grid system used. Quality and adequacy of topographic control. 	<ul style="list-style-type: none"> Goldfields Group; Collar co-ordinates for RC and DD holes, including elevation were surveyed with DGPS. RAB holes were located with GPS. Downhole surveys were taken every 10m for RC and DD holes, method unknown. RAB holes not downhole surveyed. The gird system used is AGD 1984 AMG Zone 51. Monarch Gold Mining Company Ltd; Drill hole collars were surveyed by Spectrum Surveys of Kalgoorlie using RTK GPS. Downhole surveys were undertaken by electronic multiple shot (EMS) or Eastman single shot. The gird system used is GDA1994 MGA Zone 51. WMC; Drill hole collars were surveyed by Electronic Distance Meter (EDM) theodolite by the Kalgoorlie Gold Operations' mine surveyor. Holes also surveyed using theodolite by McGay Surveys as well as by WMC mine surveyors. WMC RC holes were generally not downhole surveyed. Diamond holes down hole surveyed by Eastman single shot camera or multishot approximately every 30m. The gird system used is AGD 1984 AMG Zone 51. Gilt Edged Mining NL; Contract surveyors were engaged for siting of drill holes prior to drilling, pick-up of accurate drill hole co-ordinates after drilling and down-hole plunge and azimuth readings. All holes drilled after 1998 were picked up by Fugro Survey Pty Ltd of Kalgoorlie using differential GPS. The gird system used is AGD 1984 AMG Zone 51. Siberia Mining Corporation Ltd; Collar co-ordinates for northings, eastings and elevation were recorded by Fugro Spatial Solutions Pty Ltd. The gird system used is AGD 1984 AMG Zone 51. Diamond holes were down hole surveyed by gyro. RC holes generally not downhole surveyed. If surveyed, then done by Digital electronic multishot (DEMS) EGL and Swan; Collar locations were surveyed by DGPS and downhole surveys were collected using electronic multishot by the drillers. Subsequent to drilling holes were open hole gyro surveyed by ABIMS where possible. The gird system used is GDA1994 MGA Zone 51. Ora Banda Mining Limited (RC, DD) MGA94, zone 51. Holes are picked up using RTK GPS the mine surveyors. Drill-hole downhole surveys are recorded using an Axis digital tool. Grade control holes are all surveyed by the mine surveyors by RTKGPS. Grade control holes are all downhole surveyed with north seeking gyro. At close of mining in 2008, Monarch Gold surveyed the Missouri pit area. Topographical control is considered adequate for resource modelling
Data spacing and distribution	<ul style="list-style-type: none"> Data spacing for reporting of Exploration Results. Whether the data spacing and distribution is sufficient to establish the degree of geological and grade continuity appropriate for the Mineral Resource and Ore Reserve estimation procedure(s) 	<ul style="list-style-type: none"> Drilling is predominantly on a 20mE X 20mN grid. Grade control drilling was carried out on a nominal 5m X 5m grid At Sand King the data spacing and distribution is sufficient to establish geological and grade continuity to support the definition of Mineral Resource and classifications as defined under the JORC 2012 code. Samples are not composited for reporting. Samples are composited for resource calculations.

Criteria	JORC Code explanation	Commentary
	<ul style="list-style-type: none"> and classifications applied. Whether sample compositing has been applied. 	
Orientation of data in relation to geological structure	<ul style="list-style-type: none"> Whether the orientation of sampling achieves unbiased sampling of possible structures and the extent to which this is known, considering the deposit type. If the relationship between the drilling orientation and the orientation of key mineralised structures is considered to have introduced a sampling bias, this should be assessed and reported if material. 	<ul style="list-style-type: none"> At Sand King drilling is predominantly inclined to the south, optimal for the predominantly ENE (060o) striking, north dipping mineralisation. It is not known whether there is any introduced sample bias due to drill orientation.
Sample security	<ul style="list-style-type: none"> The measures taken to ensure sample security. 	<ul style="list-style-type: none"> Unknown for earlier operators. EGL – Samples are bagged, tied and in a secure yard on site. Once submitted to the laboratories they are stored in cages within a secure fenced compound. Samples are tracked through the laboratory via their LIMS. Monarch - Pre-numbered sample bags were put into numbered plastic bags. These numbers were written on the submission forms which were checked by the geologist. Plastic bags were then securely cable tied and placed in a secure location. Samples were then picked up by the Lab in Kalgoorlie or deliver to Perth via courier. A work order conformation was emailed to Monarch personnel for each sample submission once samples were received by the Laboratory. Ora Banda Mining Limited - Samples were collected on the day of drilling and bagged into cable tied polyweave bags. Polyweave bags are stored into bulka bags on pallets in a secure yard on-site. Once submitted to the laboratories they are stored in cages within a secure fenced compound. Samples are tracked through the laboratory via their LIMS.
Audits or reviews	<ul style="list-style-type: none"> The results of any audits or reviews of sampling techniques and data. 	<ul style="list-style-type: none"> Digital data from the SQL database has been reviewed by OBM and is consistent with hard copy and digital WAMEX data. Siberia Mining Corporation conducted a due diligence on the data and core in 2005 and were "comfortable with the quality and integrity of the data". Digital data has been reviewed and is consistent with hard copy data. Monarch Gold Mining Company Ltd; Monthly QAQC reports were produced to monitor accuracy and precision.

Section 2 Reporting of Exploration Results – Riverina

(Criteria listed in the preceding Missouri & Sand King section also apply to this section.)

Criteria	JORC Code explanation	Commentary						
Mineral tenement and land tenure status	<ul style="list-style-type: none"> Type, reference name/number, location and ownership including agreements or material issues with third parties such as joint ventures, partnerships, overriding royalties, native title interests, historical sites, wilderness or national park and environmental settings. 	<ul style="list-style-type: none"> All tenure pertaining to this report is listed below. <table border="1"> <thead> <tr> <th>TENEMENT</th> <th>HOLDER</th> <th>AGREEMENTS</th> </tr> </thead> <tbody> <tr> <td>M30/256</td> <td>CARNEGIE GOLD PTY LTD.</td> <td>JV between Davyston Exploration Pty Ltd (65%) and Carnegie Gold Pty Ltd (35%) for all minerals other than gold and silver Davyston Exploration Pty Ltd holds a consent caveat</td> </tr> </tbody> </table>	TENEMENT	HOLDER	AGREEMENTS	M30/256	CARNEGIE GOLD PTY LTD.	JV between Davyston Exploration Pty Ltd (65%) and Carnegie Gold Pty Ltd (35%) for all minerals other than gold and silver Davyston Exploration Pty Ltd holds a consent caveat
TENEMENT	HOLDER	AGREEMENTS						
M30/256	CARNEGIE GOLD PTY LTD.	JV between Davyston Exploration Pty Ltd (65%) and Carnegie Gold Pty Ltd (35%) for all minerals other than gold and silver Davyston Exploration Pty Ltd holds a consent caveat						

	<ul style="list-style-type: none"> The security of the tenure held at the time of reporting along with any known impediments to obtaining a licence to operate in the area. 	<table border="1" data-bbox="922 194 1417 336"> <tr> <td data-bbox="922 194 1144 336"></td> <td data-bbox="1144 194 1417 336"></td> </tr> </table> <p data-bbox="1417 194 2154 336">Greenstone Resources Ltd and Riverina Resources Pty Ltd holds nickel rights (portions of tenement only)</p> <p data-bbox="1417 264 2154 292">Austsino Resources Group Ltd holds royalty rights (portions of tenement only)</p> <p data-bbox="1417 312 2154 336">South32 Ltd holds royalty rights (portions of tenement only)</p> <ul style="list-style-type: none"> Carnegie Gold PTY LTD is a wholly owned subsidiary of OBM. There are no known heritage or native title issues. There are no known impediments to obtaining a licence to operate in the area. 		
<p>Exploration done by other parties</p>	<ul style="list-style-type: none"> Acknowledgment and appraisal of exploration by other parties. 	<ul style="list-style-type: none"> Drilling, sampling and assay procedures and methods as stated in the database and confirmed from Wamex reports and hard copy records are considered acceptable and to industry standards of the time. 		
<p>Geology</p>	<ul style="list-style-type: none"> Deposit type, geological setting and style of mineralisation. 	<ul style="list-style-type: none"> The geology of the Riverina area consists of an interlayered sequence of meta-basalts, meta-sediments and ultramafics, rarely cross-cut by narrow pegmatite dykes. The local stratigraphy strikes roughly N-S with primarily steep east to sub-vertical dips. The area has been affected by upper greenschist to lower amphibolite grade metamorphism with many minerals exhibiting strong preferred orientations. All rock units exhibit strain via zones of foliation, with strongly sheared zones more common in ultramafic lithologies. Contemporaneous strike faults and late stage thrust faults have dislocated the stratigraphy and hence, mineralisation. Gold mineralisation is hosted by quartz-sulphide and quartz-Fe oxide veining primarily in the metabasalts. Metasediments and ultramafics may also contain gold mineralised quartz veining, although much less abundant. Gold mineralisation is also seen in silica-biotite-sulphide and silica-sericite-sulphide alteration zones in the metabasalts. 		
<p>Drill hole Information</p>	<ul style="list-style-type: none"> A summary of all information material to the understanding of the exploration results including a tabulation of the following information for all Material drill holes: <ul style="list-style-type: none"> easting and northing of the drill hole collar elevation or RL (Reduced Level – elevation above sea level in metres) of the drill hole collar dip and azimuth of the hole down hole length and interception depth hole length. If the exclusion of this information is justified on the basis that the information is not Material and this exclusion does not detract from the understanding of the report, the Competent Person should clearly explain why this is the case. 	<ul style="list-style-type: none"> See list of drill intercepts. 		
<p>Data aggregation methods</p>	<ul style="list-style-type: none"> In reporting Exploration Results, weighting averaging techniques, maximum and/or minimum grade truncations (eg cutting of high grades) 	<ul style="list-style-type: none"> Original assays are length weighted. Grades are not top cut. Lower cut off is nominally 1.0g/t. Due to the narrow nature of mineralisation a minimum sample length of 0.2m was accepted when calculating intercepts. Maximum 2m internal dilution. Metal equivalents not reported. 		

	<p><i>and cut-off grades are usually Material and should be stated.</i></p> <ul style="list-style-type: none"> • <i>Where aggregate intercepts incorporate short lengths of high grade results and longer lengths of low grade results, the procedure used for such aggregation should be stated and some typical examples of such aggregations should be shown in detail.</i> • <i>The assumptions used for any reporting of metal equivalent values should be clearly stated.</i> 	
Relationship between mineralisation widths and intercept lengths	<ul style="list-style-type: none"> • <i>These relationships are particularly important in the reporting of Exploration Results.</i> • <i>If the geometry of the mineralisation with respect to the drill hole angle is known, its nature should be reported.</i> • <i>If it is not known and only the down hole lengths are reported, there should be a clear statement to this effect (eg 'down hole length, true width not known').</i> 	<ul style="list-style-type: none"> • Intercept widths are down hole lengths. True widths are not reported given the varying orientation of drilling and mineralisation at each deposit/prospect mentioned in the report. • The geometry of the mineralisation at Riverina South is approx. N-S and sub vertical. Surface drilling is oriented perpendicular the strike of the mineralisation. UG drilling from drill cuddy with hole radiating in fans. Holes testing strike extremities are at lower angles to the ore lode and therefore not true widths, while those perpendicular to the lode can approximate true widths.
Diagrams	<ul style="list-style-type: none"> • <i>Appropriate maps and sections (with scales) and tabulations of intercepts should be included for any significant discovery being reported These should include, but not be limited to a plan view of drill hole collar locations and appropriate sectional views.</i> 	<ul style="list-style-type: none"> • See plans, cross-sections and long sections.
Balanced reporting	<ul style="list-style-type: none"> • <i>Where comprehensive reporting of all Exploration Results is not practicable, representative reporting of both low and high grades and/or widths should be practiced to avoid misleading reporting of Exploration Results.</i> 	<ul style="list-style-type: none"> • The location of drill hole intersections is shown on the plans and 2D/3D diagrams and are coloured according to grade to provide context for the highlighted intercepts
Other substantive exploration data	<ul style="list-style-type: none"> • <i>Other exploration data, if meaningful and material, should be reported including (but not limited to): geological observations; geophysical survey results; geochemical survey results; bulk samples – size and method of treatment; metallurgical test results; bulk density, groundwater, geotechnical and rock characteristics; potential deleterious or contaminating substances.</i> 	<ul style="list-style-type: none"> • Riverina has no known reported metallurgical issues. • Results from previous processing have demonstrated that good gold recovery can be expected from conventional CIL processing methods. • Recent baseline metallurgical test work demonstrated the following gold recoveries: <ul style="list-style-type: none"> ○ Oxide – 90% ○ Transitional – 97% ○ Fresh – 94.3% • Additional variation test-work remains ongoing.
Further work	<ul style="list-style-type: none"> • <i>The nature and scale of planned further work (eg tests for lateral extensions or</i> 	<ul style="list-style-type: none"> • Further GC drilling at Riverina underground will continue as the access into the mine is deepened.

	<p><i>depth extensions or large-scale step-out drilling).</i></p> <ul style="list-style-type: none"> <i>Diagrams clearly highlighting the areas of possible extensions, including the main geological interpretations and future drilling areas, provided this information is not commercially sensitive.</i> 	<ul style="list-style-type: none"> Further resource definition drilling will be conducted from the surface, when beyond the reach of the underground drills, aimed and continued mineral resource growth and resource conversion.
--	--	--

Section 2 Reporting of Exploration Results – Sand King

(Criteria listed in the preceding Missouri & Sand King section also apply to this section.)

Criteria	JORC Code explanation	Commentary						
<p>Mineral tenement and land tenure status</p>	<ul style="list-style-type: none"> <i>Type, reference name/number, location and ownership including agreements or material issues with third parties such as joint ventures, partnerships, overriding royalties, native title interests, historical sites, wilderness or national park and environmental settings.</i> <i>The security of the tenure held at the time of reporting along with any known impediments to obtaining a licence to operate in the area.</i> 	<ul style="list-style-type: none"> Sand King deposit is on Tenement M24/960 held by Siberia Mining Corporation Pty. Ltd., a wholly owned subsidiary of Ora Banda Mining. The tenement is in good standing. <table border="1" data-bbox="929 726 2000 1077"> <thead> <tr> <th>TENEMENT</th> <th>HOLDER</th> <th>AGREEMENTS</th> </tr> </thead> <tbody> <tr> <td>M24/0960</td> <td>SIBERIA MINING CORPORATION PTY LTD</td> <td> SIBERIA GRANTED GARDNER THE RIGHT TO EXPLORE FOR NICKEL MINERALS (portion of the tenement only) ROB MITCHELL AND HANK SHRERS (SURFACE ALLUVIAL RIGHTS TO 2M DEPTH) (portion of the tenement only) STONEHORSE ENERGY LIMITED HAVE RIGHTS TO EXPLORE FOR NICKEL MINERALS JV BETWEEN DAVYSTON EXPLORATION PTY LTD (65%) AND SIBERIA MINING CORPORATION PTY LTD (35%) FOR ALL MINERALS OTHER THAN GOLD AND SILVER DAVYSTON EXPLORATION PTY LTD HOLDS A CONSENT CAVEAT </td> </tr> </tbody> </table> <ul style="list-style-type: none"> There are no known heritage issues There are no known impediments to operating in the area. 	TENEMENT	HOLDER	AGREEMENTS	M24/0960	SIBERIA MINING CORPORATION PTY LTD	SIBERIA GRANTED GARDNER THE RIGHT TO EXPLORE FOR NICKEL MINERALS (portion of the tenement only) ROB MITCHELL AND HANK SHRERS (SURFACE ALLUVIAL RIGHTS TO 2M DEPTH) (portion of the tenement only) STONEHORSE ENERGY LIMITED HAVE RIGHTS TO EXPLORE FOR NICKEL MINERALS JV BETWEEN DAVYSTON EXPLORATION PTY LTD (65%) AND SIBERIA MINING CORPORATION PTY LTD (35%) FOR ALL MINERALS OTHER THAN GOLD AND SILVER DAVYSTON EXPLORATION PTY LTD HOLDS A CONSENT CAVEAT
TENEMENT	HOLDER	AGREEMENTS						
M24/0960	SIBERIA MINING CORPORATION PTY LTD	SIBERIA GRANTED GARDNER THE RIGHT TO EXPLORE FOR NICKEL MINERALS (portion of the tenement only) ROB MITCHELL AND HANK SHRERS (SURFACE ALLUVIAL RIGHTS TO 2M DEPTH) (portion of the tenement only) STONEHORSE ENERGY LIMITED HAVE RIGHTS TO EXPLORE FOR NICKEL MINERALS JV BETWEEN DAVYSTON EXPLORATION PTY LTD (65%) AND SIBERIA MINING CORPORATION PTY LTD (35%) FOR ALL MINERALS OTHER THAN GOLD AND SILVER DAVYSTON EXPLORATION PTY LTD HOLDS A CONSENT CAVEAT						
<p>Exploration done by other parties</p>	<ul style="list-style-type: none"> <i>Acknowledgment and appraisal of exploration by other parties.</i> 	<ul style="list-style-type: none"> Drilling on the tenements was completed by numerous operators, but the majority of work was completed by WMC, Gilt Edged Mining, Siberia Mining Corporation, Monarch Gold, EGS and OBM. All work by these companies was to industry standards of the time. 						
<p>Geology</p>	<ul style="list-style-type: none"> <i>Deposit type, geological setting and style of mineralisation.</i> 	<ul style="list-style-type: none"> Sand King is an orogenic lode style deposit hosted by mafic rocks, predominantly basalt. Gold mineralisation at Sand King takes the form of stacked quartz-biotite-feldspar-sulphide shear lodes within the basalt. Widths vary from sub 1m to ~ 6m true width. Occasionally blow outs occur with >6m true width. Mineralised structures are NE-SW striking in the south and normally steeply dipping (~80 degrees) to the north-west while in the north-eastern end of the deposit most mineralisation is interpreted to strike E-W and dip steeply to the north (~80 degrees) 						

Criteria	JORC Code explanation	Commentary
Drill hole information	<ul style="list-style-type: none"> A summary of all information material to the understanding of the exploration results including a tabulation of the following information for all Material drill holes: <ul style="list-style-type: none"> easting and northing of the drill hole collar elevation or RL (Reduced Level – elevation above sea level in metres) of the drill hole collar dip and azimuth of the hole down hole length and interception depth hole length. If the exclusion of this information is justified on the basis that the information is not Material and this exclusion does not detract from the understanding of the report, the Competent Person should clearly explain why this is the case. 	<ul style="list-style-type: none"> See Significant Intercepts in document The significant intercept table provides details of drill holes with intercepts of ≥ 1 gram metres, In cases where drilling has intercepted a lode position with grades below this value, NSI (no significant intercept) is listed. This provides context to the number of holes in the project area with significant gold intercepts versus the number of holes with lesser or no significant intercepts. Widths reported in the Significant Intercepts table are all down hole lengths.
Data aggregation methods	<ul style="list-style-type: none"> In reporting Exploration Results, weighting averaging techniques, maximum and/or minimum grade truncations (eg cutting of high grades) and cut-off grades are usually Material and should be stated. Where aggregate intercepts incorporate short lengths of high grade results and longer lengths of low grade results, the procedure used for such aggregation should be stated and some typical examples of such aggregations should be shown in detail. The assumptions used for any reporting of metal equivalent values should be clearly stated. 	<ul style="list-style-type: none"> Original assays are length weighted. Grades are not top cut. Lower cut off grade is nominally 1.0g/t. Maximum 2m internal dilution and minimum width of 0.2m. No metal equivalents reported.
Relationship between mineralisation widths and intercept lengths	<ul style="list-style-type: none"> These relationships are particularly important in the reporting of Exploration Results. If the geometry of the mineralisation with respect to the drill hole angle is known, its nature should be reported. If it is not known and only the down hole lengths are reported, there should be a clear statement to this effect (eg 'down hole length, true width not known'). 	<ul style="list-style-type: none"> Drilling is predominantly angled at -60° to the south, optimally intersecting the steep north dipping mineralisation. This drill orientation does not intersect all lodes at optimal angles and as such some drill intercepts are longer than true widths. All intercept widths reported are down hole lengths. The geometry of mineralisation is known for the Sand King deposit. However, no attempt has been made to report true widths. Some drill programs required shallow angle ($\sim 30^\circ$) diamond drilling to hit specific targets within the constraints of existing mining infrastructure (existing pit and dumps)
Diagrams	<ul style="list-style-type: none"> Appropriate maps and sections (with scales) and tabulations of intercepts should be included for any significant discovery being reported These should include, but not be limited to a plan view of drill hole collar locations and appropriate sectional views. 	<ul style="list-style-type: none"> See plans and sections.
Balanced reporting	<ul style="list-style-type: none"> Where comprehensive reporting of all Exploration Results is not practicable, representative reporting of both low and high grades and/or widths should be practiced to avoid misleading reporting of Exploration Results. 	<ul style="list-style-type: none"> All drill intercepts from recent drilling are reported. Results reported include both low and high gram metre (g/t x down hole length) values.

Criteria	JORC Code explanation	Commentary
Other substantive exploration data	<ul style="list-style-type: none"> Other exploration data, if meaningful and material, should be reported including (but not limited to): geological observations; geophysical survey results; geochemical survey results; bulk samples – size and method of treatment; metallurgical test results; bulk density, groundwater, geotechnical and rock characteristics; potential deleterious or contaminating substances. 	<ul style="list-style-type: none"> Metallurgical and geotechnical work has been completed for Sand King deposit in the past. Additional metallurgical, geotechnical, environmental and engineering work has been or is in the process of being completed for Sand King deposit.
Further work	<ul style="list-style-type: none"> The nature and scale of planned further work (eg tests for lateral extensions or depth extensions or large-scale step-out drilling). Diagrams clearly highlighting the areas of possible extensions, including the main geological interpretations and future drilling areas, provided this information is not commercially sensitive. 	<ul style="list-style-type: none"> Additional drilling to grow the UG resource. UG mining studies. Statutory approvals for UG mining required.

Section 3 Estimation and Reporting of Mineral Resources – Riverina

(Criteria listed in section 1, and where relevant in section 2, also apply to this section.)

Criteria	JORC Code explanation	Commentary
Database integrity	<ul style="list-style-type: none"> Measures taken to ensure that data has not been corrupted by, for example, transcription or keying errors, between its initial collection and its use for Mineral Resource estimation purposes. Data validation procedures used. 	<ul style="list-style-type: none"> Data from EGL and early OBM drilling captured into Field Marshall logging software. More recent drilling capture in Geobank Mobile. Data sent from site and imported into SQL database via DBMS. Validation checks in SQL database ensure data integrity is not compromised. The data is verified by company geologists before being sent to the DBA for validation or passing Geobank Software validation protocols. Historic data has been verified by checking historical reports on the project. The Competent Person has undertaken a number of validation checks on the database, using Micromine software which include, but are not limited to, checks for overlapping intervals, checks for missing data/records, visual checks on drill hole locations and traces to identify any possible survey issues. No major issues were detected.
Site visits	<ul style="list-style-type: none"> Comment on any site visits undertaken by the Competent Person and the outcome of those visits. If no site visits have been undertaken indicate why this is the case. 	<ul style="list-style-type: none"> Numerous site visits completed to: <ul style="list-style-type: none"> View and map geology in existing open pit View and manage drilling operations View and log drill core
Geological interpretation	<ul style="list-style-type: none"> Confidence in (or conversely, the uncertainty of) the geological interpretation of the mineral deposit. Nature of the data used and of any assumptions made. The effect, if any, of alternative interpretations on Mineral Resource estimation. The use of geology in guiding and controlling Mineral 	<ul style="list-style-type: none"> Mineralised structures are roughly N-S striking, sub-vertical to steeply east dipping. The main lodes have been previously mined and are sub-vertical. Late stage south dipping thrust structures are mapped in the pit and underground workings and would extend east towards the Murchison and Reggie lodes. Minor sinistral offsets of up to 5m are noted in underground workings and are observed as offsets of mineralised drill intercepts. Three late structures have been modelled with offsets, two south dipping pegmatite filled thrusts and a pegmatite filled back thrust known as "The Slide". An additional thrust mapped in the north pit, usually gouge filled, has been modelled without offsetting mineralisation, though in reality minor offsets will occur. An additional

Criteria	JORC Code explanation	Commentary
	<p><i>Resource estimation.</i></p> <ul style="list-style-type: none"> <i>The factors affecting continuity both of grade and geology.</i> 	<p>lower thrust has been modelled from drill core observations, again without offsetting mineralisation. An increase in drill density will enable potential offsets to be better defined.</p> <ul style="list-style-type: none"> Structural data from OBM drilling was used to guide the orientation of mineralised lodes where possible. Inspection of core and ore shows the mineralisation to be associated with silica sericite alteration and quartz-carbonate veining. Resource interpretations are guided by presence and intensity of veining and/or alteration noted in logging. Geological continuity of N-S mineralised structures are well defined, although sometimes terminate abruptly, possibly due to the minor offsets caused by the E-W structures and/or structures entering pods of sediment/ultramafic which are poor hosts for gold mineralisation. The main lodes at Riverina are geologically continuous over 1km and limited only by drilling depth. Mineralisation is also locally stoped by intruding pegmatite dykes along late structured, the location of which are well understood.
Dimensions	<ul style="list-style-type: none"> <i>The extent and variability of the Mineral Resource expressed as length (along strike or otherwise), plan width, and depth below surface to the upper and lower limits of the Mineral Resource.</i> 	<ul style="list-style-type: none"> The main lodes at Riverina are geologically continuous over 1km in a N-S direction and defined to a depth of 320m below surface. A single deep diamond hole has confirmed main lode mineralisation at a depth of 470m below surface. The central Murchison and East (Reggie) lodes extend for a similar strike length but are not as depth extensive. The deposit extends for 320m in an E-W direction
Estimation and modelling techniques	<ul style="list-style-type: none"> <i>The nature and appropriateness of the estimation technique(s) applied and key assumptions, including treatment of extreme grade values, domaining, interpolation parameters and maximum distance of extrapolation from data points. If a computer assisted estimation method was chosen include a description of computer software and parameters used.</i> <i>The availability of check estimates, previous estimates and/or mine production records and whether the Mineral Resource estimate takes appropriate account of such data.</i> <i>The assumptions made regarding recovery of by-products.</i> <i>Estimation of deleterious elements or other non-grade variables of economic significance (eg sulphur for acid mine drainage characterisation).</i> <i>In the case of block model interpolation, the block size in relation to the average sample spacing and the search employed.</i> <i>Any assumptions behind modelling of selective mining units.</i> <i>Any assumptions about correlation between variables.</i> <i>Description of how the geological interpretation was used to control the resource estimates.</i> <i>Discussion of basis for using or not using grade cutting or capping.</i> <i>The process of validation, the checking process used, the comparison of model data to drill hole data, and use of reconciliation data if available.</i> 	<ul style="list-style-type: none"> A 2-dimensional estimation technique was adopted where the lodes are projected on to a nominal 2D northing-elevation plane for estimation. Accumulation and Horizontal Width variables are estimated into a 2-Dimensional block Model and the Au grade is back calculated (Au grade = Accumulation / True Width). Full width composite samples were digitised on-screen using LeapfrogTM software. Composites have different lengths and are therefore at different supports and said to be non-additive and unsuited for ordinary kriging. When grades are weighted by the sample widths they become additive, hence requirement to estimate Accumulation (Grade*Width) and the Width. Lode intervals based on representative geology seen in core/face photos and logging. Internal dilution included if bounded by samples with significant gold grade. True Width of each full width composite is calculated in LeapfrogTM software using its distance function between the composite mid-point and the footwall and hanging-wall wireframes. Ordinary Kriging (OK) using MicromineTM was used to estimate Accumulation and Horizontal Widths into a 2D block model (single block in the E-W direction). Locations of all composite data were transformed on to a single arbitrary Easting (Local Grid coordinate 10000mE) to define the 2D north-Elevation plane. Variography was completed in the 2D plane. Semi variogram parameters defined from the Accumulation variable were also applied to the Width as the two variables are related and correlated. Mineralisation boundaries were treated as hard boundaries. High grade cuts up to 85 gram metres were applied to the Accumulation variable data based on analysis of individual domains. Top-cuts applied on a domain basis. Horizontal Width variable did not require top cutting. The parent block dimensions used were 20m NS by 20m RL. There is only one block in the X (across strike) direction. Drill hole spacing is approximately 20m between section and 20m along section in well drilled areas. A parent block size of 1m x 20m x 20m was selected to account for areas of lower drill density and taking consideration of realistic underground mining selectivity. An orientated ellipsoid search was used to select data and was based on parameters derived from variography defined using SupervisorTM software. Estimation completed in 3 runs each with less restrictive search, and minimum sample parameters. The initial interpolation pass was used with a maximum range equal to the range of the principal direction of the modelled variograms. Maximum number of samples was 12, minimum was 2 (run 3). Search range increased progressively for each subsequent run. Estimates were transformed back to real space from the 2D plane. No estimation of deleterious elements was carried out. Only Au was interpolated into the block model. Previous resource estimates have been completed in 2020, 2021 and 2023 No assumptions have been made regarding recovery of by-products. Selective mining units were not modelled in the Mineral Resource. No assumptions have been made regarding correlation between variables

Criteria	JORC Code explanation	Commentary
		<ul style="list-style-type: none"> The validation was carried out by three methods: <ul style="list-style-type: none"> Visual comparison of long section block grades with nearby drill assay results. Statistical comparison of estimated grades and composite grades on a domain by domain basis. Trend analysis of estimated block model grades versus composite grades on 10m northing and 5m vertical intervals.
Moisture	<ul style="list-style-type: none"> Whether the tonnages are estimated on a dry basis or with natural moisture, and the method of determination of the moisture content. 	<ul style="list-style-type: none"> Tonnages and grades were estimated on a dry in situ basis. No moisture values were reviewed.
Cut-off parameters	<ul style="list-style-type: none"> The basis of the adopted cut-off grade(s) or quality parameters applied. 	<ul style="list-style-type: none"> The Mineral Resources have been reported at a diluted cut-off of 1.3g/t Au inside simulated Mineable Stope Optimiser (MSO) shapes of 10m x 10m with a minimum width of 1.6m.
Mining factors or assumptions	<ul style="list-style-type: none"> Assumptions made regarding possible mining methods, minimum mining dimensions and internal (or, if applicable, external) mining dilution. It is always necessary as part of the process of determining reasonable prospects for eventual economic extraction to consider potential mining methods, but the assumptions made regarding mining methods and parameters when estimating Mineral Resources may not always be rigorous. Where this is the case, this should be reported with an explanation of the basis of the mining assumptions made. 	<ul style="list-style-type: none"> Reasonable prospects for eventual economic extraction for the Riverina underground Resource was confirmed by applying a Mine Stope Optimiser (MSO) with dimensions of 10mN x 10mRL, a minimum width of 1.6m and a cut-off grade of 1.3g/t. Individual MSO blocks were assessed and removed if above the top of fresh DTM surface and if above the A\$2400 optimised pit shell from within which the Riverina open pit resources are reported.
Metallurgical factors or assumptions	<ul style="list-style-type: none"> The basis for assumptions or predictions regarding metallurgical amenability. It is always necessary as part of the process of determining reasonable prospects for eventual economic extraction to consider potential metallurgical methods, but the assumptions regarding metallurgical treatment processes and parameters made when reporting Mineral Resources may not always be rigorous. Where this is the case, this should be reported with an explanation of the basis of the metallurgical assumptions made. 	<ul style="list-style-type: none"> Riverina has no known reported metallurgical issues. Results from previous processing have demonstrated that good gold recovery can be expected from conventional CIL processing methods. Recent baseline metallurgical test work demonstrated the following gold recoveries: <ul style="list-style-type: none"> Oxide – 90% Transitional – 97% Fresh – 94.3% Additional variation test-work remains ongoing.
Environmental factors or assumptions	<ul style="list-style-type: none"> Assumptions made regarding possible waste and process residue disposal options. It is always necessary as part of the process of determining reasonable prospects for eventual economic extraction to consider the potential environmental impacts of the mining and processing operation. While at this stage the determination of potential environmental impacts, particularly for a greenfields project, may not always be well advanced, the status of early consideration of these potential environmental impacts should be reported. Where these aspects have not been considered this should be reported with an explanation of the environmental assumptions made. 	<ul style="list-style-type: none"> Riverina Underground is currently being mined and all approvals are currently in place. All environmental impacts are accounted for in the current approvals
Bulk density	<ul style="list-style-type: none"> Whether assumed or determined. If assumed, the basis for the assumptions. If determined, the method used, whether wet or dry, the frequency of the measurements, the nature, size and representativeness of the samples. The bulk density for bulk material must have been 	<ul style="list-style-type: none"> Bulk density determinations were derived from 3459 measurements (immersion method) made on core samples drilled by OBM/EGS. Historic bulk densities for fresh basalt collected from underground in 1988 were analysed. The mean fresh rock density from recent drilling compared closely with the mean density of underground samples. Bulk density values used in the underground resource were 2.82t/m³ (Main Lodes), 2.89t/m³ (Main Lode bounding shear) and

Criteria	JORC Code explanation	Commentary
	<p><i>measured by methods that adequately account for void spaces (vugs, porosity, etc), moisture and differences between rock and alteration zones within the deposit.</i></p> <ul style="list-style-type: none"> Discuss assumptions for bulk density estimates used in the evaluation process of the different materials. 	<p>2.85t/m³ (Murchison and Reggie Lodes).</p> <ul style="list-style-type: none"> It is assumed there are minimal void spaces in the rocks within the Riverina deposit. Values applied in the Riverina block model are similar to other known bulk densities from similar geological terrains.
Classification	<ul style="list-style-type: none"> The basis for the classification of the Mineral Resources into varying confidence categories. Whether appropriate account has been taken of all relevant factors (ie relative confidence in tonnage/grade estimations, reliability of input data, confidence in continuity of geology and metal values, quality, quantity and distribution of the data). Whether the result appropriately reflects the Competent Person's view of the deposit. 	<p>Mineral Resources were classified in accordance with the Australasian Code for the Reporting of Exploration Results, Mineral Resources and Ore Reserves (JORC, 2012). The classification takes account of confidence in the geological interpretation, sample density and assay QAQC.</p> <p>Underground - wireframe solids were constructed to encompass areas considered to adequately fulfil the requirement to be classified as either, measured, indicated or inferred:</p> <ul style="list-style-type: none"> Measured – Near surface areas defined by close spaced RC grade control drilling Indicated – Areas with: <ul style="list-style-type: none"> drill spacing in long section of approximately 40mN x 40mRL where there is reasonable confidence in the geological interpretation and grade continuity. reasonable estimation quality as defined by the conditional bias slope > 0.5 Inferred – Areas with: <ul style="list-style-type: none"> drill spacing in long section in excess of 30mN x 30mRL and where grade continuity is poorer as defined by a lower sample density, even though geological continuity may be apparent. poorer estimation quality as defined by the conditional bias slope > 0.2 and < 0.5 <ul style="list-style-type: none"> The input data is comprehensive and of sufficient quality for use in the MRE's. Significant recent drilling, covering the entire deposit, has confirmed the location and tenor of many historic drill-holes. Assay QAQC is of sufficient quality for the assays to be used in the MRE. There is sufficient understanding of the geology to support the current interpretation in terms of continuity. The Mineral Resource estimates appropriately reflects the view of the Competent Person.
Audits or reviews	<ul style="list-style-type: none"> The results of any audits or reviews of Mineral Resource estimates. 	<ul style="list-style-type: none"> The Underground MRE has not been reviewed or audited
Discussion of relative accuracy/ confidence	<ul style="list-style-type: none"> Where appropriate a statement of the relative accuracy and confidence level in the Mineral Resource estimate using an approach or procedure deemed appropriate by the Competent Person. For example, the application of statistical or geostatistical procedures to quantify the relative accuracy of the resource within stated confidence limits, or, if such an approach is not deemed appropriate, a qualitative discussion of the factors that could affect the relative accuracy and confidence of the estimate. The statement should specify whether it relates to global or local estimates, and, if local, state the relevant tonnages, which should be relevant to technical and economic evaluation. Documentation should include assumptions made and the procedures used. 	<ul style="list-style-type: none"> The Riverina Mineral Resource estimate is reported with a reasonable degree of confidence. The data quality is good and the drill holes from recent drilling have detailed logs produced by qualified geologists. Historic logging has been reviewed. The Mineral Resource statements relate to global estimates of tonnes and grade. Confidence in the estimate allows reasonable quantification of global metal content. The interpretation is considered globally robust but at a local scale, variations to ore geometry and grade could be expected. All Measured and Indicated resources are relevant to economic evaluation. The deposit is currently being mined – Underground. The only underground production data is from a single air leg stope mined in 1989. Production data from current mining will be used to calibrate future MRE's

Criteria	JORC Code explanation	Commentary
	<ul style="list-style-type: none"> These statements of relative accuracy and confidence of the estimate should be compared with production data, where available. 	

Section 3 Estimation and Reporting of Mineral Resources – Sand King

(Criteria listed in section 1, and where relevant in section 2, also apply to this section.)

Criteria	JORC Code explanation	Commentary
Database integrity	<ul style="list-style-type: none"> Measures taken to ensure that data has not been corrupted by, for example, transcription or keying errors, between its initial collection and its use for Mineral Resource estimation purposes. Data validation procedures used. 	<ul style="list-style-type: none"> Data from EGS/OBM drilling captured into Field Marshall or Geobank Mobile logging software. Data sent to site for import into SQL database via DBMS. Validation checks in SQL database ensure data integrity is not compromised. Data for use in resource estimation derived directly from SQL via queries (views) and a data warehouse database Data validation included: <ul style="list-style-type: none"> review of historic digital data versus original hardcopy records Inspection of mineralised intervals in historic core
Site visits	<ul style="list-style-type: none"> Comment on any site visits undertaken by the Competent Person and the outcome of those visits. If no site visits have been undertaken indicate why this is the case. 	<ul style="list-style-type: none"> Numerous site visits completed to: <ul style="list-style-type: none"> View and log historic core Map the Sand King pit Log recent drill core
Geological interpretation	<ul style="list-style-type: none"> Confidence in (or conversely, the uncertainty of) the geological interpretation of the mineral deposit. Nature of the data used and of any assumptions made. The effect, if any, of alternative interpretations on Mineral Resource estimation. The use of geology in guiding and controlling Mineral Resource estimation. The factors affecting continuity both of grade and geology. 	<ul style="list-style-type: none"> Sand King pit mapped by structural geological consultants (Model Earth Pty. LTD) Additional mapping completed by OBM geology team.. Current pit mapping identifies early O10 and 330 ductile shears and O60 and O90 (semi) steep north dipping brittle extension veins. Extension veins form the bulk of the mineralisation. An extensive relog program of historic diamond core was completed to provide consistency with 2016 (EGS) and 2020 (OBM) geological logging. Inspection of core and pit ore shows the mineralisation to be associated with quartz-carbonate veining and biotite-sulphide alteration either side of the veining. Resource interpretations guided by presence and intensity of veining and/or biotite noted in logging. Geological continuity of extension structures is well defined, although not strike extensive and can terminate abruptly. Quartz tension veins oriented 090°-100° form stacked lodes and the intersection of these with the shear-lodes and 060° lodes is the most likely control for high grade shoots and plunge steeply towards the N-NNE. Mineralising structures post date locally intruding aplite dykes and these can be (weakly) mineralised.
Dimensions	<ul style="list-style-type: none"> The extent and variability of the Mineral Resource expressed as length (along strike or otherwise), plan width, and depth below surface to the upper and lower limits of the Mineral Resource. 	<ul style="list-style-type: none"> The Sand King deposit extends for over 800m in NE-SW direction and approximately 300m in a SE-NW direction. The Resource extends for ~400m below the surface RL of 420m AHD.
Estimation and modelling techniques	<ul style="list-style-type: none"> The nature and appropriateness of the estimation technique(s) applied and key assumptions, including treatment of extreme grade values, domaining, interpolation parameters and maximum distance of extrapolation from data points. If a computer assisted estimation method was chosen include a description of computer software and parameters used. The availability of check estimates, previous estimates and/or mine production records and 	<ul style="list-style-type: none"> Interpolation was done using Ordinary Kriging (OK) estimation method. 1m composite samples coded to the mineralised domains were used as inputs to estimation. Only RC (including RC grade control) and diamond drilling samples were used for estimation. OK was used to estimate gold grades into a 3-dimensional block model. Estimation parameters were derived from modelled semi-variograms. Micromine™ software was used for the OK estimation. Grade capping was applied on a domain by domain basis due to the usually positively skewed grade populations. High grade cuts up to 50g/t were applied to 1m composite data based on analysis of individual domains. The parent block dimensions for OK estimates were 4m NS by 10m EW by 10m vertical. Sub-cells of 0.5m by 1m by 1m were applied to the OK model. Drill hole spacing is approximately 20m between section and 20m along section. The parent block size is approx. 50% of data

Criteria	JORC Code explanation	Commentary
	<p><i>whether the Mineral Resource estimate takes appropriate account of such data.</i></p> <ul style="list-style-type: none"> • <i>The assumptions made regarding recovery of by-products.</i> • <i>Estimation of deleterious elements or other non-grade variables of economic significance (eg sulphur for acid mine drainage characterisation).</i> • <i>In the case of block model interpolation, the block size in relation to the average sample spacing and the search employed.</i> • <i>Any assumptions behind modelling of selective mining units.</i> • <i>Any assumptions about correlation between variables.</i> • <i>Description of how the geological interpretation was used to control the resource estimates.</i> • <i>Discussion of basis for using or not using grade cutting or capping.</i> • <i>The process of validation, the checking process used, the comparison of model data to drill hole data, and use of reconciliation data if available.</i> 	<p>spacing.</p> <ul style="list-style-type: none"> • An orientated ellipsoid search was used to select data and was based on parameters derived from the variography defined using Supervisor™ software. • Estimation completed in 3 or 4 runs each with less restrictive search, and minimum sample parameters. The initial interpolation pass was used with a maximum range equal to the range of the principal direction of the modelled semi variograms. Maximum number of samples was 16, minimum was 6. Range increased progressively and number of samples required was reduced for each subsequent run. The fourth run had minimum samples set to 2. • No estimation of deleterious elements was carried out. Only Au was interpolated into the block model. • Previous OK resource estimates have been completed in 2017, 2020 2021 and 2022 all tailored for Open Pit MRE's. • No assumptions have been made regarding recovery of by-products. • No assumptions have been made with respect to modelling of selective mining units. • Only Au was estimated so correlation analysis was not possible. • The deposit mineralisation was constrained by wireframes constructed using an approx. 1 g/t Au cut-off grade (based on inflection point in log probability plot of raw assays) in association with logged geology, particularly the presence of quartz veining and biotite-sulphide alteration. Ore lode continuity is preserved reasonably well at the relatively high interpretation cut-off grade. The wireframes were applied as hard boundaries in the estimate. • The validation was carried out by three methods: <ul style="list-style-type: none"> ○ Visual comparison of block grades with nearby drill assay results on a section by section basis. ○ Comparison of estimated grades and composite grades on a domain by domain basis. ○ Trend analysis of estimated block model grades versus composite grades.
Moisture	<ul style="list-style-type: none"> • <i>Whether the tonnages are estimated on a dry basis or with natural moisture, and the method of determination of the moisture content.</i> 	<ul style="list-style-type: none"> • Tonnages and grades were estimated on a dry in situ basis. No moisture values were reviewed.
Cut-off parameters	<ul style="list-style-type: none"> • <i>The basis of the adopted cut-off grade(s) or quality parameters applied.</i> 	<ul style="list-style-type: none"> • The Underground Mineral Resource has been reported at a diluted 0.8 g/t Au cut-off from within Mine Stope Optimiser shapes (MSO) with 10mN x 10mRL dimensions and minimum 1.6m width. All fresh material above cut-off grade within MSO shapes below 350RL are included in the report.
Mining factors or assumptions	<ul style="list-style-type: none"> • <i>Assumptions made regarding possible mining methods, minimum mining dimensions and internal (or, if applicable, external) mining dilution. It is always necessary as part of the process of determining reasonable prospects for eventual economic extraction to consider potential mining methods, but the assumptions made regarding mining methods and parameters when estimating Mineral Resources may not always be rigorous. Where this is the case, this should be reported with an explanation of the basis of the mining assumptions made.</i> 	<ul style="list-style-type: none"> • Reasonable prospects for eventual economic extraction for the Sand King underground Resource was confirmed by applying a Mine Stope Optimiser (MSO) with dimensions of 10mN x 10mRL, a minimum width of 1.6m and a cut-off grade of 0.8 g/t.
Metallurgical factors or assumptions	<ul style="list-style-type: none"> • <i>The basis for assumptions or predictions regarding metallurgical amenability. It is always necessary as part of the process of determining reasonable prospects for eventual economic extraction to consider potential metallurgical methods, but the assumptions regarding metallurgical treatment processes and parameters made when reporting Mineral Resources may not always be rigorous. Where this is the case, this should be reported with</i> 	<ul style="list-style-type: none"> • Sand King deposit has been successfully mined in the past. • Metallurgical test-work was undertaken in 2019/2020 and again in 2023/2024 as part of mining studies. • Gold recovery adopted for the underground mine is 87% (Fresh)

Criteria	JORC Code explanation	Commentary
	<i>an explanation of the basis of the metallurgical assumptions made.</i>	
Environmental factors or assumptions	<ul style="list-style-type: none"> Assumptions made regarding possible waste and process residue disposal options. It is always necessary as part of the process of determining reasonable prospects for eventual economic extraction to consider the potential environmental impacts of the mining and processing operation. While at this stage the determination of potential environmental impacts, particularly for a greenfields project, may not always be well advanced, the status of early consideration of these potential environmental impacts should be reported. Where these aspects have not been considered this should be reported with an explanation of the environmental assumptions made. 	<ul style="list-style-type: none"> The previous mining operations included the development of waste dumps and tailings at the site. Waste rock from underground will be used to cap historic tailings. The area is not located in an environmentally sensitive area and all environmental approvals are in place
Bulk density	<ul style="list-style-type: none"> Whether assumed or determined. If assumed, the basis for the assumptions. If determined, the method used, whether wet or dry, the frequency of the measurements, the nature, size and representativeness of the samples. The bulk density for bulk material must have been measured by methods that adequately account for void spaces (vugs, porosity, etc), moisture and differences between rock and alteration zones within the deposit. Discuss assumptions for bulk density estimates used in the evaluation process of the different materials. 	<ul style="list-style-type: none"> 1682 density measurements (water immersion method) were taken from ore and waste material derived from older and recent OBM drilling. Bulk density values used in the resource were 1.5t/m³, 2.43t/m³ and 2.84t/m³ for oxide, transitional and fresh mineralisation respectively. Densities of 1.57t/m³, 2.61t/m³ and 3.0t/m³ for oxide, transitional and fresh waste were assigned. A fresh rock ore density of 2.88 g/cm³ was determined by Oretest laboratory on a bulk ore sample in 1998. These bulk density estimates are similar to values determined for comparable basalt hosted gold deposits, and in particular Missouri deposit 600m to the south.
Classification	<ul style="list-style-type: none"> The basis for the classification of the Mineral Resources into varying confidence categories. Whether appropriate account has been taken of all relevant factors (ie relative confidence in tonnage/grade estimations, reliability of input data, confidence in continuity of geology and metal values, quality, quantity and distribution of the data). Whether the result appropriately reflects the Competent Person's view of the deposit. 	<ul style="list-style-type: none"> Mineral Resources were classified in accordance with the Australasian Code for the Reporting of Exploration Results, Mineral Resources and Ore Reserves (JORC, 2012). The Mineral Resource was classified as Indicated and Inferred Mineral Resource on the basis of data quality, sample spacing, and lode continuity. The Indicated portion of the Mineral Resource was defined where: <ul style="list-style-type: none"> Good support from drilling, averaging a nominal 30mN x 30mE. Areas where the estimation quality is reasonable. The remaining portions of the deposit were classified as Inferred Mineral Resource where: <ul style="list-style-type: none"> Data support is poorer with drilling typically greater than 30m x 20m. Smaller lodes defined by three or less drill holes. The definition of mineralised zones is based on sound geological understanding of the controls on mineralisation. This is largely due to recent detailed pit mapping and has produced a robust model of mineralised domains. Inferred resources are typically at the periphery of mineralised domains and at depth where confidence is generally lower. The Mineral Resource estimate appropriately reflects the view of the Competent Person.
Audits or reviews	<ul style="list-style-type: none"> The results of any audits or reviews of Mineral Resource estimates. 	<ul style="list-style-type: none"> The current MRE has not been peer reviewed or audited

Criteria	JORC Code explanation	Commentary																																																					
Discussion of relative accuracy/confidence	<ul style="list-style-type: none"> Where appropriate a statement of the relative accuracy and confidence level in the Mineral Resource estimate using an approach or procedure deemed appropriate by the Competent Person. For example, the application of statistical or geostatistical procedures to quantify the relative accuracy of the resource within stated confidence limits, or, if such an approach is not deemed appropriate, a qualitative discussion of the factors that could affect the relative accuracy and confidence of the estimate. The statement should specify whether it relates to global or local estimates, and, if local, state the relevant tonnages, which should be relevant to technical and economic evaluation. Documentation should include assumptions made and the procedures used. These statements of relative accuracy and confidence of the estimate should be compared with production data, where available. 	<ul style="list-style-type: none"> The Sand King Mineral Resource estimate is reported with a reasonable degree of confidence. The data quality is good and the drill holes from recent drilling by EGS/OBM have detailed logs produced by qualified geologists. Historic logging has been reviewed. Confidence in the estimate allows reasonable quantification of global metal content. The interpretation is considered globally robust but at a local scale, variations to ore geometry and/or grade could be expected. All Measured and Indicated resources are relevant to economic evaluation. The deposit is not currently being mined. Historical production records are available for the deposit. <table border="1" style="margin: 10px auto;"> <thead> <tr> <th>Operator</th> <th>Period</th> <th>Tonnes Mined</th> <th>Head Grade</th> <th>Recovered Grade</th> <th>Recovery</th> <th>Ounces Produced</th> </tr> </thead> <tbody> <tr> <td rowspan="4">WMC</td> <td>1980 - 1986</td> <td>321,853</td> <td>5.2</td> <td>4.77</td> <td>0.92</td> <td>49,388</td> </tr> <tr> <td>1986 - 1987</td> <td colspan="5">Production Suspended</td> </tr> <tr> <td>1987 - 1991</td> <td>425,202</td> <td>3.11</td> <td>2.85</td> <td>0.91</td> <td>38,907</td> </tr> <tr> <td>Total Production</td> <td>747,055</td> <td>4.01</td> <td>3.68</td> <td>0.92</td> <td>88,295</td> </tr> <tr> <td>Monarch Gold</td> <td>2007/2008</td> <td>48,073</td> <td></td> <td>2.27</td> <td></td> <td>3,478</td> </tr> <tr> <td>EGS*</td> <td>2018</td> <td>118,400</td> <td></td> <td>1.12</td> <td></td> <td>4,233</td> </tr> <tr> <td>OBM</td> <td>2023 - 2024</td> <td>122,002</td> <td>1.97</td> <td></td> <td></td> <td>7,710</td> </tr> </tbody> </table> <p>* Includes Laterite and Low-Grade Stockpile</p>	Operator	Period	Tonnes Mined	Head Grade	Recovered Grade	Recovery	Ounces Produced	WMC	1980 - 1986	321,853	5.2	4.77	0.92	49,388	1986 - 1987	Production Suspended					1987 - 1991	425,202	3.11	2.85	0.91	38,907	Total Production	747,055	4.01	3.68	0.92	88,295	Monarch Gold	2007/2008	48,073		2.27		3,478	EGS*	2018	118,400		1.12		4,233	OBM	2023 - 2024	122,002	1.97			7,710
Operator	Period	Tonnes Mined	Head Grade	Recovered Grade	Recovery	Ounces Produced																																																	
WMC	1980 - 1986	321,853	5.2	4.77	0.92	49,388																																																	
	1986 - 1987	Production Suspended																																																					
	1987 - 1991	425,202	3.11	2.85	0.91	38,907																																																	
	Total Production	747,055	4.01	3.68	0.92	88,295																																																	
Monarch Gold	2007/2008	48,073		2.27		3,478																																																	
EGS*	2018	118,400		1.12		4,233																																																	
OBM	2023 - 2024	122,002	1.97			7,710																																																	

Section 4 Estimation and Reporting of Ore Reserves

Criteria	JORC Code explanation	Commentary
Mineral Resource estimate for conversion to Ore Reserves	<ul style="list-style-type: none"> Description of the Mineral Resource estimate used as a basis for the conversion to an Ore Reserve. Clear statement as to whether the Mineral Resources are reported additional to, or inclusive of, the Ore Reserves. 	<ul style="list-style-type: none"> All Mineral Resources were completed by Ora Band Mining (OBM) using Ordinary Kriging and formed the basis for re-estimation of the Ore Reserve. Mineral Resources are reported inclusive of the in situ Ore Reserves. The total Ore Reserve includes an estimated 600,000 t at 1.1 g/t of economic material in surface stockpiles. The Riverina Ore Reserve was estimated from a diluted Mineral Resource. The diluted Mineral Resource was created from the undiluted resource by constraining the model to a minimum width of 1.6 m at a cut-off grade of 1.3 g/t with each lode evaluated on a spacing of 10 mN x 10 mRL. The Sand King Ore Reserve was estimated from a diluted Mineral Resource. The diluted Mineral Resource was created from the undiluted resource by constraining the model to a minimum width of 1.6 m at a cut-off grade of 0.8 g/t with each lode evaluated on a spacing of 10 mN x 10 mRL.
Site visits	<ul style="list-style-type: none"> Comment on any site visits undertaken by the Competent Person and the outcome of those visits. If no site visits have been undertaken indicate why 	<ul style="list-style-type: none"> The site was initially visited by Mr Geoff Davidson on May 20th, 2020 and on several occasions subsequently. Mr Davidson is the Competent Person for portions of this Ore Reserve estimate relating to the open pit operations. During the site visit representative diamond drill core for each of the deposits was inspected for areas within the proposed mining envelopes. In addition, visits were made to each of the proposed mining locations and inspections

Criteria	JORC Code explanation	Commentary
	<i>this is the case.</i>	<p>were made of the existing plant site and associated infrastructure at Davyhurst. Mr Davidson is satisfied the conditions allowed for in this Ore Reserve estimate is consistent with the observations made during the site visit.</p> <ul style="list-style-type: none"> The site has been visited by Mr Leroy Savage on multiple occasions as he was formerly site based at the Siberia mining complex. He is currently part of Ora Banda Mining's corporate mining engineering team. Mr Savage is the Competent Person for Riverina and Sand King Underground Ore Reserve estimate. Mr Savage has inspected representative diamond drill core for the Sand King Underground for areas within the proposed mining envelope. In addition, inspections were made of the existing plant and associated infrastructure at Davyhurst. Mr Savage is satisfied the conditions allowed for Riverina and Sand King Underground Ore Reserve estimate are consistent with the observations made during various site visits. The Competent persons are satisfied the parameters and modifying factors used to determine their respective Ore Reserve are appropriate.
Study status	<ul style="list-style-type: none"> <i>The type and level of study undertaken to enable Mineral Resources to be converted to Ore Reserves.</i> <i>The Code requires that a study to at least Pre-Feasibility Study level has been undertaken to convert Mineral Resources to Ore Reserves. Such studies will have been carried out and will have determined a mine plan that is technically achievable and economically viable, and that material Modifying Factors have been considered.</i> 	<ul style="list-style-type: none"> This Ore Reserve estimate is an update for the DGP; the mining costs used to determine the economic mining envelopes and convert Mineral Resources into Ore Reserves are based on mining costs specific to the locations considered. The evaluation of the Ore Reserves is considered to be at a pre-feasibility level of confidence or better. Technically achievable mine plans were developed for each mining location and determined to be economically viable following the application of appropriate Modifying Factors and practical mining programs. The costs and parameters used are based on existing realised costs and current or recent hard dollar contracts implemented for the project.
Cut-off parameters	<ul style="list-style-type: none"> <i>The basis of the cut-off grade(s) or quality parameters applied.</i> 	<ul style="list-style-type: none"> Cut-off grade parameters were determined using realised costs from existing or recent project specific hard dollar contracts, as well as realised internal costs for OBM labour, plant and equipment. Ore haulage costs were based on contracts in place at the time. Processing costs were based on an assessment of realised costs to date and forward projections. Site general costs and administration overheads (G&A) were based on existing realised costs specific to the mining operations. Selling costs were based on standard State Royalties and existing third party royalty agreements. Metallurgical process recoveries were based on recent demonstrated process plant performance or the most recent metallurgical test work. Cut off grades for Sand King Underground reserves and the cut off grade for Riverina Underground reserves were based on a gold price of A\$2,250/oz. The cut off grade for Waihi supports a gold price of A\$2,600/oz. The inclusion of Low Grade and Surface Stockpiles were based on a cut off grade determined at A\$3,000/oz. The cut off grade allows for ore haulage, crusher loading, processing, site G&A and corporate overhead contributions. The total of these costs were estimated to range between A\$60 to A\$68 per tonne depending on mining location. The processing recovery applied to all open pits material was 92% and is based on recent plant performance. The processing recovery applied to Riverina Underground was 88% and was based on recent metallurgical test work. The processing recovery applied to Sand King Underground was 87% and was based on recent metallurgical work. Standard state royalties were included as well as an ad valorem third party royalty of 1%. The cut off grade for Waihi was estimated to be 1.2 g/t. The cut off grade for Low Grade and Surface stockpiles was estimated to be 0.8 g/t. The cut off grade for the Riverina Underground was estimated to be 2.5 g/t. A cut off grade of 1.4 g/t was applied to the underground development. The Riverina Underground reserve comprises approximately 148,550 t at 3.0 g/t of development ore and contemplates 80% to be via the split-firing method of extraction. The cut off grade for the Sand King Underground was estimated to be 2.5 g/t. A cut off grade of 1.2 g/t was applied to the underground development. The Sand King Underground reserve comprises approximately 137,180 t at 2.7 g/t of development ore and contemplates 35% to be via the split-firing method of extraction. The respective cut-off grades were applied to the diluted Mineral Resource for each project.
Mining factors or assumptions	<ul style="list-style-type: none"> <i>The method and assumptions used as reported in the Pre-Feasibility or Feasibility Study to convert the Mineral Resource to an Ore Reserve (i.e. either by</i> 	<p>Open Pit Mining Factors and Assumptions</p> <ul style="list-style-type: none"> A combination of approved and preliminary mine designs were used as the basis for the Ore Reserve estimate. Preliminary designs were derived from economic envelopes determined using Whittle pit optimisation, based on

Criteria	JORC Code explanation	Commentary
	<p><i>application of appropriate factors by optimisation or by preliminary or detailed design).</i></p> <ul style="list-style-type: none"> <i>The choice, nature and appropriateness of the selected mining method(s) and other mining parameters including associated design issues such as pre-strip, access, etc.</i> <i>The assumptions made regarding geotechnical parameters (eg pit slopes, stope sizes, etc), grade control and pre-production drilling.</i> <i>The major assumptions made and Mineral Resource model used for pit and stope optimisation (if appropriate).</i> <i>The mining dilution factors used.</i> <i>The mining recovery factors used.</i> <i>Any minimum mining widths used.</i> <i>The manner in which Inferred Mineral Resources are utilised in mining studies and the sensitivity of the outcome to their inclusion.</i> <i>The infrastructure requirements of the selected mining methods.</i> 	<p>costs from earlier studies, as well as slope parameters determined from geotechnical assessment and modified for ramps and minimum mining widths. Approved mine designs were validated in a cash flow model. The project average mining cost was estimated to be A\$10.20 per tonne of material mined, depending on location and maturity of the operation. These costs include provisions for grade control, drill, blast, load, haul, rehabilitation and OBM mine overheads.</p> <ul style="list-style-type: none"> Conventional mining methods are used at DGP. Open cut operations are primarily planned around using 120 t-class excavators and 90 t dump trucks. All material mined, excluding existing in-pit backfill, historical waste dumps and in-pit tailings, allow for drilling and blasting. The Competent Person considers the mining method to be appropriate for the style and nature of the mineralisation. Minimum mining widths of 20 m were allowed on all wall cutbacks adjacent to existing open pit workings. The mining methods proposed are well-known and widely used in the local mining industry, and productivity rates were based on historical performance. Suitable access exists to the mine. The mining method contemplates selectively separating waste from the ore to minimise dilution and ore loss. Ore faces will be exposed by removing waste to the identified contact prior to removing the ore. Independent consultants prepared a geotechnical analysis to an appropriate level of detail. This forms the basis of pit wall design criteria. Allowance was made for grade control activities, including in-pit reverse circulation drilling and face sampling. Only the Indicated and Measured portion of the Mineral Resource was used to estimate the Ore Reserve. All Inferred material was treated as waste. Background grades were estimated into the mineral resource model and subsequently included as diluting material. The average grade of dilution included in the reserve were 0.16 g/t for Waihi. Open pit mining blocks were diluted by applying a dilution skin to both footwall and hanging wall using Auto Stope Designer (ASD) functionality in Deswik™. The method also included internal and edge dilution resulting from forming practical mineable shapes using ASD. A skin thickness of 0.5 m was applied to Waihi to both hanging wall and footwall. A minimum mining width of 1.5 m was applied. The dilution parameters were determined from operational performance. Average dilution factors are 27% at Waihi. Ore loss was incurred in the ASD process due to the variation between mineralised lode geometry and dig block geometry. In addition, a nominal 5% loss was applied for further mining losses occurring through normal operations. Practical mine designs were completed for Waihi which formed the basis of scheduling and economic validation of the Ore Reserve. The strip ratio for Waihi was estimated to be 9.3. Most of the infrastructure required for the operations is already established at the DGP, including a processing plant and associated infrastructure, camp, airstrip, offices, power reticulation, borefields and coreyards. An accommodation camp has been constructed at the Riverina. Waihi is located approximately 3.5 km from the Davyhurst mill and administration and will be managed from there. Nominal provisions were made for site infrastructure. <p>Underground Mining Factors and Assumptions Riverina Underground</p> <ul style="list-style-type: none"> The mining method proposed for Riverina is narrow-vein long hole open stoping using up-hole-benching techniques. This method has been successfully and comprehensively implemented at similar styled deposits in the West Australian Goldfields region. The decline design parameters are nominally 5.5m wide x 5.7m high with an average design gradient of 1:7 down. Ore development has been planned at 4.5m wide x 4.5m high. The average floor to floor distance between levels will be 21 metres, with an average stope panel height of approximately 16.5 metres. OBM geotechnical engineer conducted a geotechnical analysis to an appropriate level of detail. This forms the basis of stoping parameters and development ground support requirements. Stopes will be approximately 40m

Criteria	JORC Code explanation	Commentary
		<p>long x 22m high within the stable envelope of the unsupported span determined from geotechnical analysis. Provision is made for full height rib pillars between stopes and sill pillars, which will be reevaluated upon stope performance. This provision equates to a recovery of 89%. An additional 5% ore loss was also provisioned for operating losses. The overall stope recovery is estimated to be 84%.</p> <ul style="list-style-type: none"> The reserve inventories will be mined in proximity to known historical underground workings. The design has been stood-off an appropriate distance from known voids. Probe drilling and resultant dewatering will be undertaken prior to developing near any known voids. Appropriate procedures will be implemented during the mining episode when mining around historical underground voids. Split firing methods will be undertaken in the planned 4.5m by 4.5m wide ore drives to minimize dilution. It is estimated for the style of mineralisation (narrow vein), the average dilution for development (for the 80% where it is used) will reduce to the equivalent to developing a 3.5m wide drive. Overall unit mining costs for the underground was estimated to be A\$190/t ore. Stopes were defined by applying a 2.5 g/t cut-off to the diluted Mineral Resource. The cut-off allows for ore drive development and stoping, as well as load and haul downstream processing and sales. A minimum stope mining width of 1.6m was applied in the dilution modelling process, with a dilution skin then applied. The dilution allows for a skin of 0.3 m on both hanging wall and footwall. In addition, a nominal allowance of 5% dilution was included to account for unidentified dilution sources. The global dilution of the diluted resource was estimated to be 59% of material. Dilution being all included material less than 0.9 g/t. A cut off grade of 1.2 g/t was applied to ore drive development on a cut by cut basis. This cut-off allows for ore haulage, processing and sales. Each stoping level was evaluated for waste development costs to ensure the combined production from the level was above economic hurdles. Grade control will be conducted primarily via face sampling and underground diamond drilling. Infrastructure required for the underground operations is already established at Riverina. This included a mining camp, offices, fuel farm, workshops, water storage, diesel generated power and conventional underground mine services. <p>Sand King Underground</p> <ul style="list-style-type: none"> The mining method proposed for Sand King is narrow-vein long hole open stoping using up-hole-benching techniques. This method has been successfully and comprehensively implemented at similar styled deposits in the West Australian Goldfields region. The decline design parameters are nominally 5.5m wide x 5.7m high with an average design gradient of 1:7 down. Ore development has been planned at 4.5m wide x 4.5m high. The average floor to floor distance between levels will be 22 metres, with an average stope panel height of approximately 17.5 metres. Internal Geotechnical Engineers conducted a geotechnical analysis to an appropriate level of detail. This forms the basis of stoping parameters and development ground support requirements. Stopes will be approximately 45m long x 22m high within the stable envelope of the unsupported span determined from geotechnical analysis. Provision is made for full height rib pillars between stopes, sill pillars will be evaluated upon stope performance. This provision equates to a recovery of 92%. An additional 5% ore loss was also provisioned for operating losses. The overall stope recovery is estimated to be 87%. Split firing methods will be undertaken in the planned 4.5m by 4.5m wide ore drives to minimize dilution. It is estimated for the style of mineralisation (narrow vein), the average dilution for development (for the 35% where it is used) will reduce to the equivalent to developing a 3.5m wide drive. Overall unit mining costs for the underground was estimated to be A\$166/t ore, inclusive of startup capital. Stopes were defined by applying a 2.5 g/t cut-off to the diluted Mineral Resource and spatially optimised to ensure all economic ounces are included. The cut-off allows for ore drive development and stoping, as well as load and haul downstream processing and sales. A minimum stope mining width of 1.5m was applied in the dilution modelling process, with a dilution skin then applied.

Criteria	JORC Code explanation	Commentary
		<ul style="list-style-type: none"> The dilution allows for a skin of 0.4m on the hanging wall and 0.3m on the footwall. In addition, a nominal allowance of 5% dilution was included to account for unidentified dilution sources. The global dilution of the diluted resource was estimated to be 29% of material. Dilution being all included material less than 0.9 g/t.. A cut off grade of 1.2g/t was applied to ore drive development on a cut by cut basis. This cut-off allows for ore haulage, processing and sales. Each stoping level was evaluated for waste development costs to ensure the combined production from the level was above economic hurdles. Grade control will be conducted primarily via face sampling and underground diamond drilling. Infrastructure required for the underground operations is already established at Sand King Underground following a recent phase of Open Pit mining. This included a mining camp, offices, fuel farm, workshops, water storage and airstrip. Diesel generated power and conventional underground mine services will be installed as required to commence underground operations.
Metallurgical factors or assumptions	<ul style="list-style-type: none"> <i>The metallurgical process proposed and the appropriateness of that process to the style of mineralisation.</i> <i>Whether the metallurgical process is well-tested technology or novel in nature.</i> <i>The nature, amount and representativeness of metallurgical test work undertaken, the nature of the metallurgical domaining applied and the corresponding metallurgical recovery factors applied.</i> <i>Any assumptions or allowances made for deleterious elements.</i> <i>The existence of any bulk sample or pilot scale test work and the degree to which such samples are considered representative of the orebody as a whole.</i> <i>For minerals that are defined by a specification, has the ore reserve estimation been based on the appropriate mineralogy to meet the specifications?</i> 	<ul style="list-style-type: none"> The process for treating ore is conventional CIL with some gold recovered via gravity circuit. This is a standard gold processing flowsheet used throughout the industry for this style of mineralisation. Based on mill performance for FY23 the global average process recovery for open pit operation was estimated to be 92%. A process recovery of 88% was applied to Riverina Underground based on recent metallurgical testing of samples taken from within the proposed mining envelope. A process recovery of 87% was applied to Sand King Underground based on recent metallurgical testing of samples taken from within the proposed mining envelope. The process plant has a nominal throughput rate of 1.2 Mtpa based on a grind size of 106 µm. The process plant has been successfully operated and further operational improvements are proposed.
Environmental	<ul style="list-style-type: none"> <i>The status of studies of potential environmental impacts of the mining and processing operation. Details of waste rock characterisation and the consideration of potential sites, status of design options considered and, where applicable, the status of approvals for process residue storage and waste dumps should be reported.</i> 	<ul style="list-style-type: none"> All flora and fauna baseline studies have been completed for areas that may potentially be influenced by mining operations contemplated in this Ore Reserve estimate. No conservation significant taxa were identified as being at risk. Searches of Indigenous and European State Heritage Registers have not identified any sites that require active management. Potential environmental impacts will be risk managed as part of the DMIRS Mining Proposal. Both historical and recent geochemical data indicate the majority of waste rock mass is non-acid forming. Sulphidic sedimentary units at Riverina will be intersected occasionally by underground development and will be classed as Potential Acid Forming (PAF). The storage of PAF waste is being managed through co-mingling with Acid Neutralising Capacity(ANC) waste in accordance with the approved Mine Closure plan. Test work on Waihi tails has reported that there is no PAF risk. Provisions for the management of PAF were allowed for in this estimate. Testing has commenced on Sand King Underground PAF potential. Tailings from ore processing will be stored within the existing Tailings Storage Facility (TSF). Allowance has been made for expansions to this facility as required by the mine plan.
Infrastructure	<ul style="list-style-type: none"> <i>The existence of appropriate infrastructure: availability of land for plant development, power, water, transportation (particularly for bulk commodities), labour, accommodation; or the ease with which the infrastructure can be provided, or</i> 	<ul style="list-style-type: none"> The majority of required infrastructure is established and commissioned. Small temporary satellite facilities for Waihi will be required. Preliminary provisions were made within the financial analysis for these facilities. Additional accommodation camp capacity has been constructed at both Davyhurst and Riverina. Communication is established at all operating locations. The operation is currently serviced by an existing airstrip adjacent to the Callion mine workings and from Kalgoorlie

Criteria	JORC Code explanation	Commentary
	<i>accessed.</i>	airport.
Costs	<ul style="list-style-type: none"> • <i>The derivation of, or assumptions made, regarding projected capital costs in the study.</i> • <i>The methodology used to estimate operating costs.</i> • <i>Allowances made for the content of deleterious elements.</i> • <i>The source of exchange rates used in the study.</i> • <i>Derivation of transportation charges.</i> • <i>The basis for forecasting or source of treatment and refining charges, penalties for failure to meet specification, etc.</i> • <i>The allowances made for royalties payable, both Government and private.</i> 	<ul style="list-style-type: none"> • Initial capital has been fully expensed. Sustaining capital was allowed for in the financial analysis. • Mining and ore haulage costs were estimated from hard dollar contracts for the project current at the date of the Ore Reserve. • Power, diesel and accommodation costs were based on current realised costs. Staff costs were based on current employment contracts in place. • Processing operating costs were based on current performance. • Unit costs for haulage, processing and site overheads were estimated based on scheduled utilisation of process capacity using material above the economic cut off grade. • Open Pit Mining operations specific overhead costs were included based on costs budget for FY25. • Riverina Underground overheads and fixed costs applied to the Ore Reserve were factored based on proportion of total contracted material movement over duration of the Ore Reserve case. The contracted material relies on the conversion to reserve of additional Mineral Resource. • Sand King Underground overheads and fixed costs applied to the reserve were factored based on proportion of total contracted material movement estimated month to month being on average 73% of contracted material movement over duration of the reserve case. The contracted material relies on the conversion to reserve of additional Mineral Resource. • Corporate overhead were assigned based on the estimated costs attributable to operations being 50%. • No deleterious elements have been identified or are expected. • All costs were quoted and compiled in Australian dollars. • The standard WA state government royalty for gold was allowed for. Third party royalties of 1% ad valorem were applied in the financial analysis.
Revenue factors	<ul style="list-style-type: none"> • <i>The derivation of, or assumptions made regarding revenue factors including head grade, metal or commodity price(s) exchange rates, transportation and treatment charges, penalties, net smelter returns, etc.</i> • <i>The derivation of assumptions made of metal or commodity price(s), for the principal metals, minerals and co-products.</i> 	<ul style="list-style-type: none"> • Revenue calculations were based on detailed mine plans and mining factors including provision for dilution and ore loss. • The metal price used for underground mine cut off grade estimate was A\$2,250. The Waihi Open Pit cut-off grade was based on A\$2,600/oz. Low Grade and Stockpile cut-off grades were based on A\$3,000/oz. • A financial analysis was completed on A\$3,000/oz before selling costs and is below the current spot price as of the date of this announcement. Price assumptions were based on consensus forecasting by recognised financial institutions.
Market assessment	<ul style="list-style-type: none"> • <i>The demand, supply and stock situation for the particular commodity, consumption trends and factors likely to affect supply and demand into the future.</i> • <i>A customer and competitor analysis along with the identification of likely market windows for the product.</i> • <i>Price and volume forecasts and the basis for these forecasts.</i> • <i>For industrial minerals the customer specification, testing and acceptance requirements prior to a supply contract.</i> 	<ul style="list-style-type: none"> • There are no known major gold producers expecting to influence the global supply of gold over the period of the project. • Demand for gold is expected to be subject to usual global factors.
Economic	<ul style="list-style-type: none"> • <i>The inputs to the economic analysis to produce the net present value (NPV) in the study, the source and confidence of these economic inputs including estimated inflation, discount rate, etc.</i> • <i>NPV ranges and sensitivity to variations in the</i> 	<ul style="list-style-type: none"> • The Ore Reserve estimate was validated using a financial model prepared to a budget level of accuracy for the purpose of project evaluation using realised costs to date and existing contract pricing. • All inputs from open pit and underground operations, processing, transportation and sustaining capital as well as contingencies have been scheduled and evaluated to generate a life of mine financial model. • Economic inputs have been sourced from operational budgets, contractors and DGP accounts for internal costs.

Criteria	JORC Code explanation	Commentary
	<i>significant assumptions and inputs.</i>	<ul style="list-style-type: none"> Unit costs for haulage, processing and site overheads were estimated based on full utilisation of process plant capacity using material above the economic cut off grade. A discount rate of 9%pa was applied. The NPV of the Project is positive at an assumed commodity price of A\$3000/oz and the Competent Persons are satisfied that the project economics retains a suitable margin of profitability based on the reserve assumptions
Social	<ul style="list-style-type: none"> <i>The status of agreements with key stakeholders and matters leading to social licence to operate.</i> 	<ul style="list-style-type: none"> To the best of the Competent Persons knowledge all agreements are in place and current with all key stakeholders including traditional owner claimants.
Other	<ul style="list-style-type: none"> <i>To the extent relevant, the impact of the following on the project and/or on the estimation and classification of the Ore Reserves:</i> <i>Any identified material naturally occurring risks.</i> <i>The status of material legal agreements and marketing arrangements.</i> <i>The status of governmental agreements and approvals critical to the viability of the project, such as mineral tenement status, and government and statutory approvals. There must be reasonable grounds to expect that all necessary Government approvals will be received within the timeframes anticipated in the Pre-Feasibility or Feasibility study. Highlight and discuss the materiality of any unresolved matter that is dependent on a third party on which extraction of the reserve is contingent.</i> 	<ul style="list-style-type: none"> A formal process to assess and mitigate naturally occurring risks will be undertaken prior to execution of each location. Currently, all naturally occurring risks are assumed to have adequate prospects for control and mitigation. All proposed mining operations are contained within granted mining leases 100% owned by Ora Banda Mining. All approvals are in place for Riverina Underground which is currently producing. Development of Waihi will require specific approvals. Based on the information provided, the Competent Person is unaware of any reason why these approvals will not be successfully granted within the anticipated timeframe. Sand King UG operations are fully permitted. Environmental management plans are still to be approved by the regulators; however, there is no know impediment to these being accepted.
Classification	<ul style="list-style-type: none"> <i>The basis for the classification of the Ore Reserves into varying confidence categories.</i> <i>Whether the result appropriately reflects the Competent Person's view of the deposit.</i> <i>The proportion of Probable Ore Reserves that have been derived from Measured Mineral Resources (if any).</i> 	<ul style="list-style-type: none"> The Proved and Probable Ore Reserves were based on that portion of the Measured and Indicated Mineral Resource respectively within the mine design that may be economically extracted and includes an allowance for dilution and ore loss. The result appropriately reflects the Competent Person's view of the deposit and how it will be exploited. The Ore Reserve is inclusive of surface stockpiles above the relevant cut off grade and total 600,000 t at 1.1 g/t . All surface stockpiles were classified as Proved. Measured Material has been classified as Probable reserves pending the acquisition of additional reconciliation data. Inferred material within the Riverina Underground Ore Reserve equates to 12,235t at a grade of 6.1g/t. This material is included at the edges of the mining envelope and equate to 2.7% of the Ore Reserve inventories. Inferred material within the Sand King Underground Ore Reserve equates to 12,014t at a grade of 2.8g/t. This material is included at the edges of the mining envelope and equate to 2.0% of the Ore Reserve inventories.
Audits or reviews	<ul style="list-style-type: none"> <i>The results of any audits or reviews of Ore Reserve estimates.</i> 	<ul style="list-style-type: none"> The Ore Reserve estimate, along with the mine design and life of mine plan, has been peer-reviewed internally by Ora Banda Mining Pty Ltd and associated independent consultants.
Discussion of relative accuracy/confidence	<ul style="list-style-type: none"> <i>Where appropriate a statement of the relative accuracy and confidence level in the Ore Reserve estimate using an approach or procedure deemed appropriate by the Competent Person. For example, the application of statistical or geostatistical procedures to quantify the relative accuracy of the reserve within stated confidence limits, or, if such an approach is not deemed appropriate, a qualitative discussion of the factors which could affect the relative accuracy and confidence of the estimate.</i> <i>The statement should specify whether it relates to</i> 	<ul style="list-style-type: none"> The design, schedule and financial model on which the Ore Reserve is based was completed to a feasibility level of accuracy for project evaluation purposes. Costs were taken from existing contracts, contractor budget quotations and internal realised costs reported from OBM accounts. The Ore Reserve is a global estimate. There is a degree of uncertainty associated with geological estimates. The Reserve classifications reflect the levels of geological confidence in the estimates. There is a degree of uncertainty regarding estimates of impacts of natural phenomena including geotechnical assumptions, hydrological assumptions and the modifying mining factors, commensurate with the current status of the project. The Competent Person is satisfied that the analysis used to generate the modifying factors is appropriate, and that a suitable margin exists under current market conditions to allow for the Reserve estimate to

Criteria	JORC Code explanation	Commentary
	<p><i>global or local estimates, and, if local, state the relevant tonnages, which should be relevant to technical and economic evaluation. Documentation should include assumptions made and the procedures used.</i></p> <ul style="list-style-type: none"> <i>Accuracy and confidence discussions should extend to specific discussions of any applied Modifying Factors that may have a material impact on Ore Reserve viability, or for which there are remaining areas of uncertainty at the current study stage.</i> <i>It is recognised that this may not be possible or appropriate in all circumstances. These statements of relative accuracy and confidence of the estimate should be compared with production data, where available.</i> 	<p>remain economically viable despite reasonably foreseeable negative modifying factor results.</p> <ul style="list-style-type: none"> Unit costs for haulage, processing and site overheads were estimated based on schedule utilisation of process plant capacity using material above the economic cut off grade. There is a degree of uncertainty regarding estimates of commodity prices and exchange rates, however the Competent Person is satisfied that the assumptions used to determine the economic viability of the Ore Reserves are reasonable based on their source. Where applicable parameters and modifying factors used were calibrated against actual operational data and reconciliations.