

## SUNNYSIDE COAL MINE – MONTHLY MONITORING SUMMARY

### Site Information

**EPL No:** 12957

**EPA Website Link:** <http://epa.nsw.gov.au/prpoeoapp/ViewPOEOLicence.aspx?DOCID=40292&SYSUID=1&LICID=12957>

**Licensee:** Namoi Mining Pty Ltd

**Licensee Address:** Sunnyside Coal Project, 259 Coocooboona Lane, GUNNEDAH NSW 2380

**EPL Monitoring Points:** See Figure 1 below

**Sampling Period:** January 2020

**Obtained Date:** 17 February 2020

**Publication Date:** 28 February 2020

**Table 1 - No Pollutant Limits Apply**

EPL ID	Pollutant	Units of Measure	Monitoring Frequency	No. of Samples for the Month	Date(s) Sampled	Date(s) Obtained	Min Value	Mean Value	Median Value	Max or Only Value
1	Particulates-Deposited Matter	g/m <sup>2</sup> /month	Continuous	1	17/01/2020	03/02/2020	-	-	-	3.2
2	Particulates-Deposited Matter	g/m <sup>2</sup> /month	Continuous	1	17/01/2020	03/02/2020	-	-	-	58.5
4	Particulates-Deposited Matter	g/m <sup>2</sup> /month	Continuous	1	17/01/2020	03/02/2020	-	-	-	2.5
5	Particulates-Deposited Matter	g/m <sup>2</sup> /month	Continuous	1	17/01/2020	03/02/2020	-	-	-	2.1
6	Particulates-Deposited Matter	g/m <sup>2</sup> /month	Continuous	1	17/01/2020	03/02/2020	-	-	-	4.9
7	PM <sub>10</sub>	µg/m <sup>3</sup>	Every 6 days	5	Various	17/02/2020	11.7	51.08	48.3	80.5
9	Conductivity	µS/cm	Special Frequency 1*	0	-	-	-	-	-	-
	Total organic carbon	mg/L					-	-	-	-
10	Conductivity	µS/cm		-	-	-	-	-	-	-

## SUNNYSIDE COAL MINE – MONTHLY MONITORING SUMMARY

EPL ID	Pollutant	Units of Measure	Monitoring Frequency	No. of Samples for the Month	Date(s) Sampled	Date(s) Obtained	Min Value	Mean Value	Median Value	Max or Only Value
	Total organic carbon	mg/L	Special Frequency 1*				-	-	-	-
11	TSS	mg/L	Special Frequency 2**	-			-	-	-	-
	Conductivity	µS/cm		-			-	-	-	
	Oil & Grease	mg/L		-			-	-	-	
	pH	pH		-			-	-	-	
	Total organic carbon	mg/L		-			-	-	-	
12	TSS	mg/L	Special Frequency 2**	-			-	-	-	-
	Conductivity	µS/cm		-			-	-	-	
	Oil & Grease	mg/L		-			-	-	-	
	pH	pH		-			-	-	-	
	Total organic carbon	mg/L		-			-	-	-	

**Table 2 - Pollutant Limits Apply**

EPL ID	Pollutant	Units of Measure	Monitoring Frequency	No. of Samples for the Month	Date Sampled	Date Obtained	Min Value	Max Value	100%ile Limit	Exceedance (Yes/No)	Comments
9	TSS	mg/L	Special Frequency 1*	0	-	-	-	-	50	-	No discharge
	Oil & Grease	mg/L		0			-	-	10	-	No discharge
	pH	pH		0			-	-	6.5-8.5	-	No discharge
10	TSS	mg/L	Special Frequency 1*	0	-	-	-	-	50	-	No discharge
	Oil & Grease	mg/L		0			-	-	10	-	No discharge
	pH	pH		0			-	-	6.5-8.5	-	No discharge

\* Special Frequency 1 means the collection of samples as soon as practicable after each discharge commences and in any case not more than 12 hours after each discharge commences.



## SUNNYSIDE COAL MINE – MONTHLY MONITORING SUMMARY

\*\* Special Frequency 2 means collection of samples quarterly (in the event of flow during the quarter) at a time when there is flow and as soon as practicable after each wet weather discharge from points 9 and 10 commences and in any case not more than 12 hours after each discharge commences.

**Table 3- Noise Monitoring (Noise limits apply)**

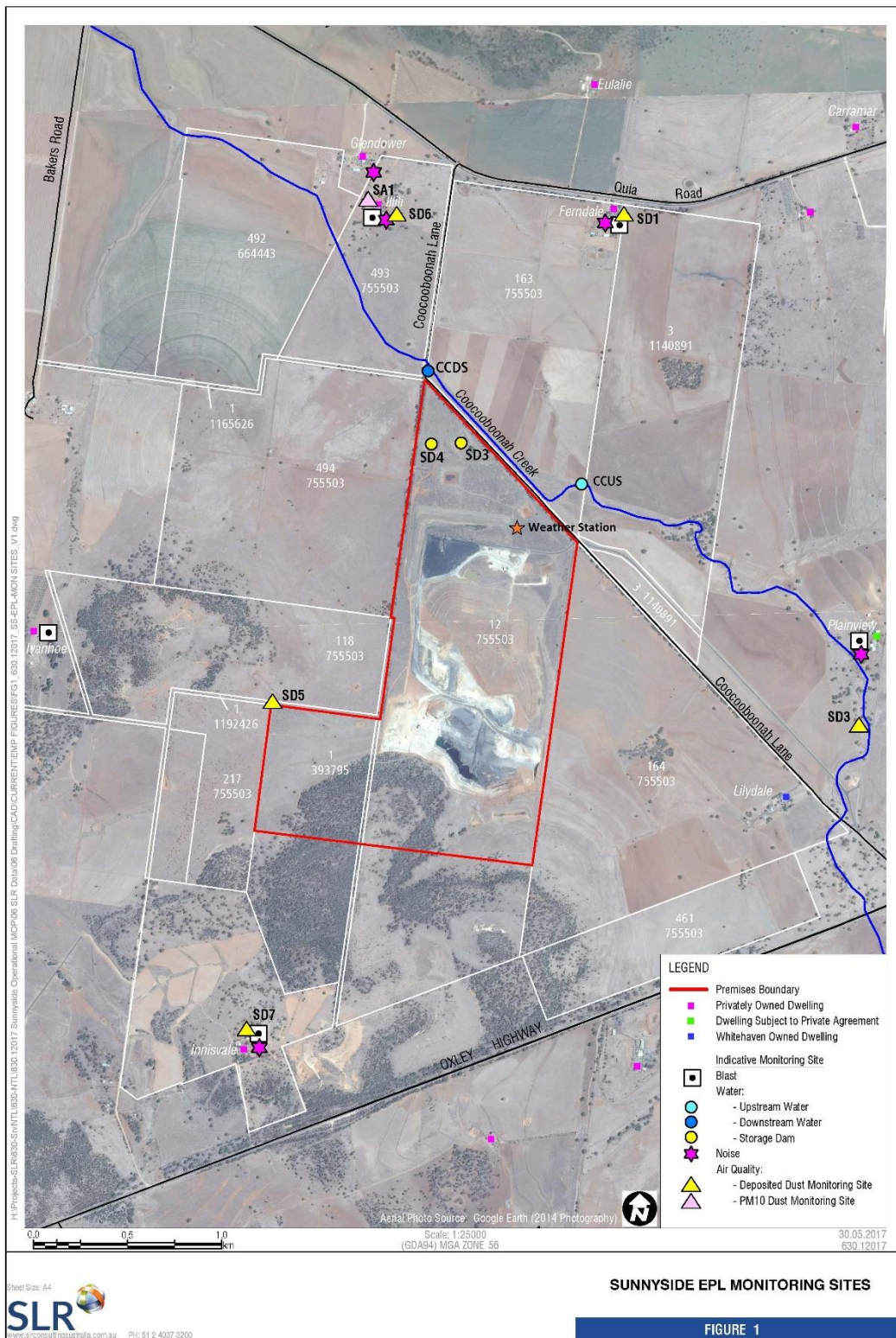
EPL ID	Date	Start Time	Measurement Period	Measured Levels – dB(A)	Measured Levels – dB(A)	Limit	Wind speed/ direction	Compliant (Yes/No)	Comments
				L <sub>eq</sub> 15min Day	L <sub>eq</sub> 15min Evening				
13									
14									
15									



**SUNNYSIDE COAL MINE – MONTHLY MONITORING SUMMARY**

17									

Figure 1 – EPL 12957 Monitoring Locations





C:\TempPath\zzzz\Spatial\Aerial\_Sat\Tarrawonga\LiDAR

## SUNNYSIDE COAL MINE – MONTHLY MONITORING SUMMARY

### Site Information

**EPL No:** 12957

**EPA Website Link:** <http://epa.nsw.gov.au/prpoeoapp/ViewPOEOLicence.aspx?DOCID=40292&SYSUID=1&LICID=12957>

**Licensee:** Namoi Mining Pty Ltd

**Licensee Address:** Sunnyside Coal Project, 259 Coccoo boonah Lane, GUNNEDAH NSW 2380

**EPL Monitoring Points:** See Figure 1 below

**Sampling Period:** February 2020

**Obtained Date:** 9<sup>th</sup> March 2020

**Publication Date:** 20 March 2020

**Table 1 - No Pollutant Limits Apply**

EPL ID	Pollutant	Units of Measure	Monitoring Frequency	No. of Samples for the Month	Date(s) Sampled	Date(s) Obtained	Min Value	Mean Value	Median Value	Max or Only Value
1	Particulates-Deposited Matter	g/m <sup>2</sup> /month	Continuous	1	18/02/20	28/02/20	-	-	-	1.0
2	Particulates-Deposited Matter	g/m <sup>2</sup> /month	Continuous	1	18/02/20	28/02/20	-	-	-	1.2
4	Particulates-Deposited Matter	g/m <sup>2</sup> /month	Continuous	1	18/02/20	28/02/20	-	-	-	0.5
5	Particulates-Deposited Matter	g/m <sup>2</sup> /month	Continuous	1	18/02/20	28/02/20	-	-	-	1.3
6	Particulates-Deposited Matter	g/m <sup>2</sup> /month	Continuous	1	18/02/20	28/02/20	-	-	-	0.9
7	PM <sub>10</sub>	µg/m <sup>3</sup>	Every 6 days	5	Various	9/03/20	1.6	18.9	12.2	50.4
9	Conductivity	µS/cm		-	-	-	-	-	-	-



**SUNNYSIDE COAL MINE – MONTHLY MONITORING SUMMARY**

EPL ID	Pollutant	Units of Measure	Monitoring Frequency	No. of Samples for the Month	Date(s) Sampled	Date(s) Obtained	Min Value	Mean Value	Median Value	Max or Only Value
	Total organic carbon	mg/L	Special Frequency 1*				-	-	-	-
10	Conductivity	µS/cm	Special Frequency 1*	-	-	-	-	-	-	-
	Total organic carbon	mg/L					-	-	-	-
11	TSS	mg/L	Special Frequency 2**	-	-	-	-	-	-	-
	Conductivity	µS/cm					-	-	-	-
	Oil & Grease	mg/L					-	-	-	-
	pH	pH					-	-	-	-
	Total organic carbon	mg/L					-	-	-	-
12	TSS	mg/L	Special Frequency 2**	-	-	-	-	-	-	-
	Conductivity	µS/cm					-	-	-	-
	Oil & Grease	mg/L					-	-	-	-
	pH	pH					-	-	-	-
	Total organic carbon	mg/L					-	-	-	-

**Table 2 - Pollutant Limits Apply**

EPL ID	Pollutant	Units of Measure	Monitoring Frequency	No. of Samples for the Month	Date Sampled	Date Obtained	Min Value	Max Value	100%ile Limit	Exceedance (Yes/No)	Comments
9	TSS	mg/L	Special Frequency 1*	0	-	-	-	-	50	-	No discharge
	Oil & Grease	mg/L		0			-	-	10	-	No discharge
	pH	pH		0			-	-	6.5-8.5	-	No discharge
10	TSS	mg/L	Special Frequency 1*	0	-	-	-	-	50	-	No discharge
	Oil & Grease	mg/L		0			-	-	10	-	No discharge
	pH	pH		0			-	-	6.5-8.5	-	No discharge



## SUNNYSIDE COAL MINE – MONTHLY MONITORING SUMMARY

\* Special Frequency 1 means the collection of samples as soon as practicable after each discharge commences and in any case not more than 12 hours after each discharge commences.

\*\* Special Frequency 2 means collection of samples quarterly (in the event of flow during the quarter) at a time when there is flow and as soon as practicable after each wet weather discharge from points 9 and 10 commences and in any case not more than 12 hours after each discharge commences.

**Table 3- Noise Monitoring (Noise limits apply)**

EPL ID	Date	Start Time	Measurement Period	Measured Levels – dB(A)	Measured Levels – dB(A)	Limit	Wind speed/ direction	Compliant (Yes/No)	Comments
				L <sub>eq</sub> 15min Day	L <sub>eq</sub> 15min Evening				
13	-	-	-			-	-	-	-
		-	-				-	-	-
	-	-	-				-	-	-
		-	-				-	-	-
	-	-	-				-	-	-
		-	-				-	-	-
14	-	-	-			-	-	-	-
		-	-				-	-	-
	-	-	-				-	-	-
		-	-				-	-	-
	-	-	-				-	-	-
		-	-				-	-	-
15	-	-	-			-	-	-	-
		-	-				-	-	-
	-	-	-				-	-	-
		-	-				-	-	-

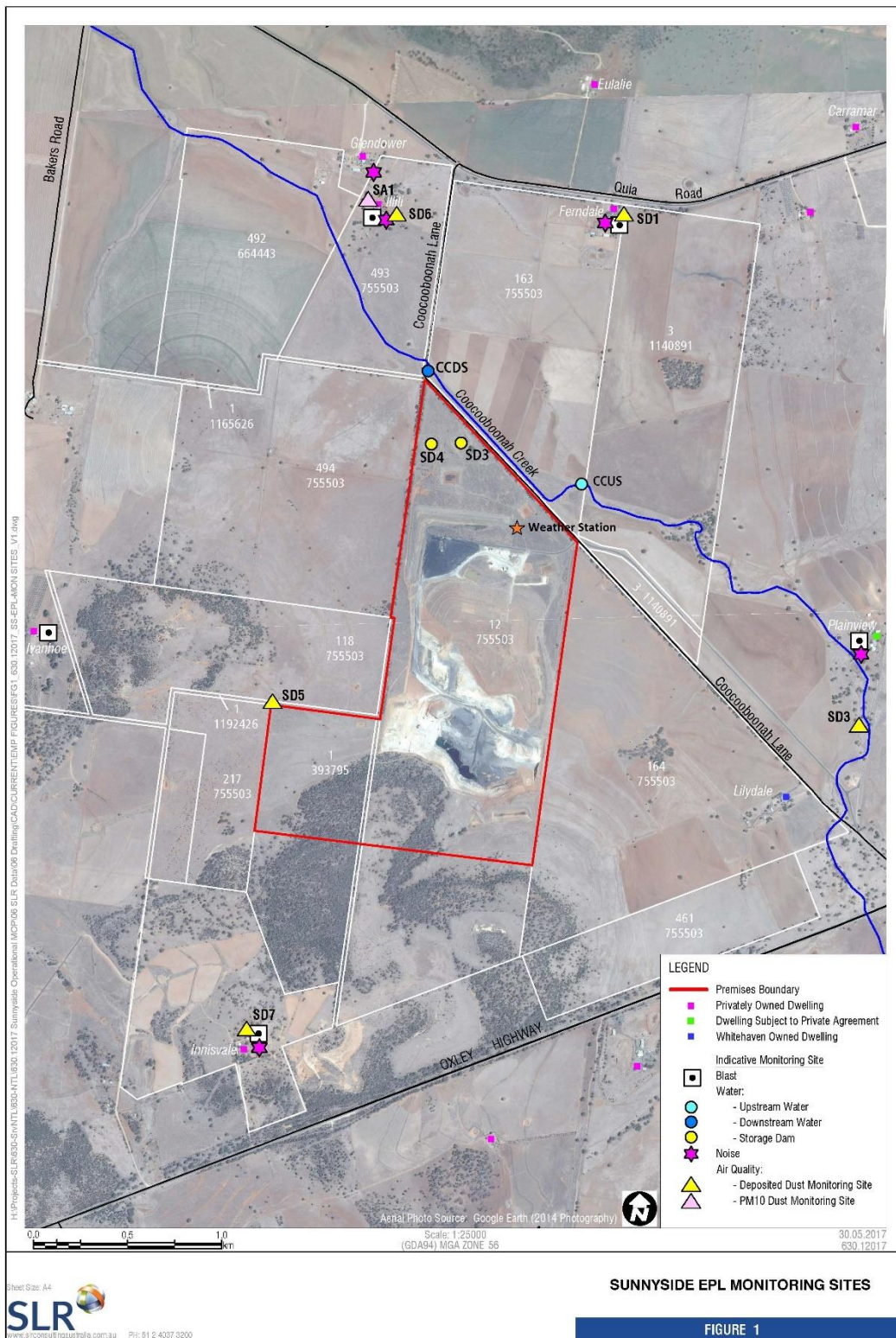




**SUNNYSIDE COAL MINE – MONTHLY MONITORING SUMMARY**

	-	-	-			-	-	-	-
		-	-				-	-	-
17	-	-	-			-	-	-	-
		-	-				-	-	-
	-	-	-				-	-	-
		-	-				-	-	-
	-	-	-				-	-	-
		-	-				-	-	-

**Figure 1 – EPL 12957 Monitoring Locations**



## SUNNYSIDE COAL MINE – MONTHLY MONITORING SUMMARY

### Site Information

**EPL No:** 12957

**EPA Website Link:** <http://epa.nsw.gov.au/prpoeoapp/ViewPOEOLicence.aspx?DOCID=40292&SYSUID=1&LICID=12957>

**Licensee:** Namoi Mining Pty Ltd

**Licensee Address:** Sunnyside Coal Project, 259 Coocooboona Lane, GUNNEDAH NSW 2380

**EPL Monitoring Points:** See Figure 1 below

**Sampling Period:** March 2020

**Obtained Date:** 8th April 2020

**Publication Date:** 20<sup>th</sup> April 2020

**Table 1 - No Pollutant Limits Apply**

EPL ID	Pollutant	Units of Measure	Monitoring Frequency	No. of Samples for the Month	Date(s) Sampled	Date(s) Obtained	Min Value	Mean Value	Median Value	Max or Only Value
1	Particulates-Deposited Matter	g/m <sup>2</sup> /month	Continuous	1	19/03/20	26/03/20	-	-	-	0.5
2	Particulates-Deposited Matter	g/m <sup>2</sup> /month	Continuous	1	19/03/20	26/03/20	-	-	-	0.4
4	Particulates-Deposited Matter	g/m <sup>2</sup> /month	Continuous	1	19/03/20	26/03/20	-	-	-	0.3
5	Particulates-Deposited Matter	g/m <sup>2</sup> /month	Continuous	1	19/03/20	26/03/20	-	-	-	0.7
6	Particulates-Deposited Matter	g/m <sup>2</sup> /month	Continuous	1	19/03/20	26/03/20	-	-	-	0.3
7	PM <sub>10</sub>	µg/m <sup>3</sup>	Every 6 days	5	Various	8/04/20	4.6	13.4	8.1	23.2
9	Conductivity	µS/cm	Special Frequency 1*	-	-	-	-	-	-	-
	Total organic carbon	mg/L					-	-	-	-
10	Conductivity	µS/cm		-	-	-	-	-	-	-

## SUNNYSIDE COAL MINE – MONTHLY MONITORING SUMMARY

EPL ID	Pollutant	Units of Measure	Monitoring Frequency	No. of Samples for the Month	Date(s) Sampled	Date(s) Obtained	Min Value	Mean Value	Median Value	Max or Only Value
	Total organic carbon	mg/L	Special Frequency 1*				-	-	-	-
11	TSS	mg/L	Special Frequency 2**	-			-	-	-	-
	Conductivity	µS/cm		-			-	-	-	
	Oil & Grease	mg/L		-			-	-	-	
	pH	pH		-			-	-	-	
	Total organic carbon	mg/L		-			-	-	-	
12	TSS	mg/L	Special Frequency 2**	-			-	-	-	-
	Conductivity	µS/cm		-			-	-	-	
	Oil & Grease	mg/L		-			-	-	-	
	pH	pH		-			-	-	-	
	Total organic carbon	mg/L		-			-	-	-	

**Table 2 - Pollutant Limits Apply**

EPL ID	Pollutant	Units of Measure	Monitoring Frequency	No. of Samples for the Month	Date Sampled	Date Obtained	Min Value	Max Value	100%ile Limit	Exceedance (Yes/No)	Comments
9	TSS	mg/L	Special Frequency 1*	0	-	-	-	-	50	-	No discharge
	Oil & Grease	mg/L		0			-	-	10	-	No discharge
	pH	pH		0			-	-	6.5-8.5	-	No discharge
10	TSS	mg/L	Special Frequency 1*	0	-	-	-	-	50	-	No discharge
	Oil & Grease	mg/L		0			-	-	10	-	No discharge
	pH	pH		0			-	-	6.5-8.5	-	No discharge

\* Special Frequency 1 means the collection of samples as soon as practicable after each discharge commences and in any case not more than 12 hours after each discharge commences.



## SUNNYSIDE COAL MINE – MONTHLY MONITORING SUMMARY

\*\* Special Frequency 2 means collection of samples quarterly (in the event of flow during the quarter) at a time when there is flow and as soon as practicable after each wet weather discharge from points 9 and 10 commences and in any case not more than 12 hours after each discharge commences.

Table 4-1, 4-2, 4-3- Noise Monitoring (Noise limits apply)

Table 4-1 Summary of noise assessment at Point 13

Date	Time	Noise Limits	Mine $L_{Aeq}$ Noise Level (dB)		
		$LA_{eq,15 min}$	Measured Mine Contribution	Additional LF Penalty	Exceedance
09/03/2020	15:00	35	<30	-	0
	15:15	35	<30	-	0
	15:30	35	<30	-	0
	15:45	35	<30	-	0
	16:00	35	<24 (I/A) <sup>1</sup>	-	0
	16:15	35	<27 (I/A) <sup>1</sup>	-	0
	18:47	35	<28 (I/A) <sup>1</sup>	-	0
	19:02	35	<31 (I/A) <sup>1</sup>	-	0
	10:25	35	<28 (I/A) <sup>1</sup>	-	0
10/03/2020	10:40	35	<29 (I/A) <sup>1</sup>	-	0
	10:55	35	<29 (I/A) <sup>1</sup>	-	0
	11:10	35	<29 (I/A) <sup>1</sup>	-	0
	11:25	35	<28 (I/A) <sup>1</sup>	-	0
	11:40	35	<28 (I/A) <sup>1</sup>	-	0
	19:10	35	<26 (I/A) <sup>1</sup>	-	0

<sup>1</sup> Where mine noise was inaudible throughout the entire measurement, it is assumed that the contribution is less than 10 dB below the measured  $L_{Aeq}$ .

Table 4-2 Summary of noise assessment at Point 14

Date	Time	Noise Limits	Mine $L_{Aeq}$ Noise Level (dB)		
		$LA_{eq,15 min}$	Measured Mine Contribution	Additional LF Penalty	Exceedance
09/03/2020	15:00	35	<30	-	0
	15:15	35	<30	-	0
	15:32	35	<30	-	0
	15:48	35	<27 (I/A) <sup>1</sup>	-	0
	16:04	35	<28 (I/A) <sup>1</sup>	-	0
	16:19	35	<30 (I/A) <sup>1</sup>	-	0
	18:45	35	<29 (I/A) <sup>1</sup>	-	0
	19:00	35	<29 (I/A) <sup>1</sup>	-	0
	10:21	35	<26 (I/A) <sup>1</sup>	-	0
10/03/2020	10:37	35	<31 (I/A) <sup>1</sup>	-	0
	10:53	35	<34 (I/A) <sup>1</sup>	-	0
	11:10	35	<35 (I/A) <sup>1</sup>	-	0
	11:27	35	<31 (I/A) <sup>1</sup>	-	0
	11:43	35	<33 (I/A) <sup>1</sup>	-	0

<sup>1</sup> Where mine noise was inaudible throughout the entire measurement, it is assumed that the contribution is less than 10 dB below the measured  $L_{Aeq}$ .



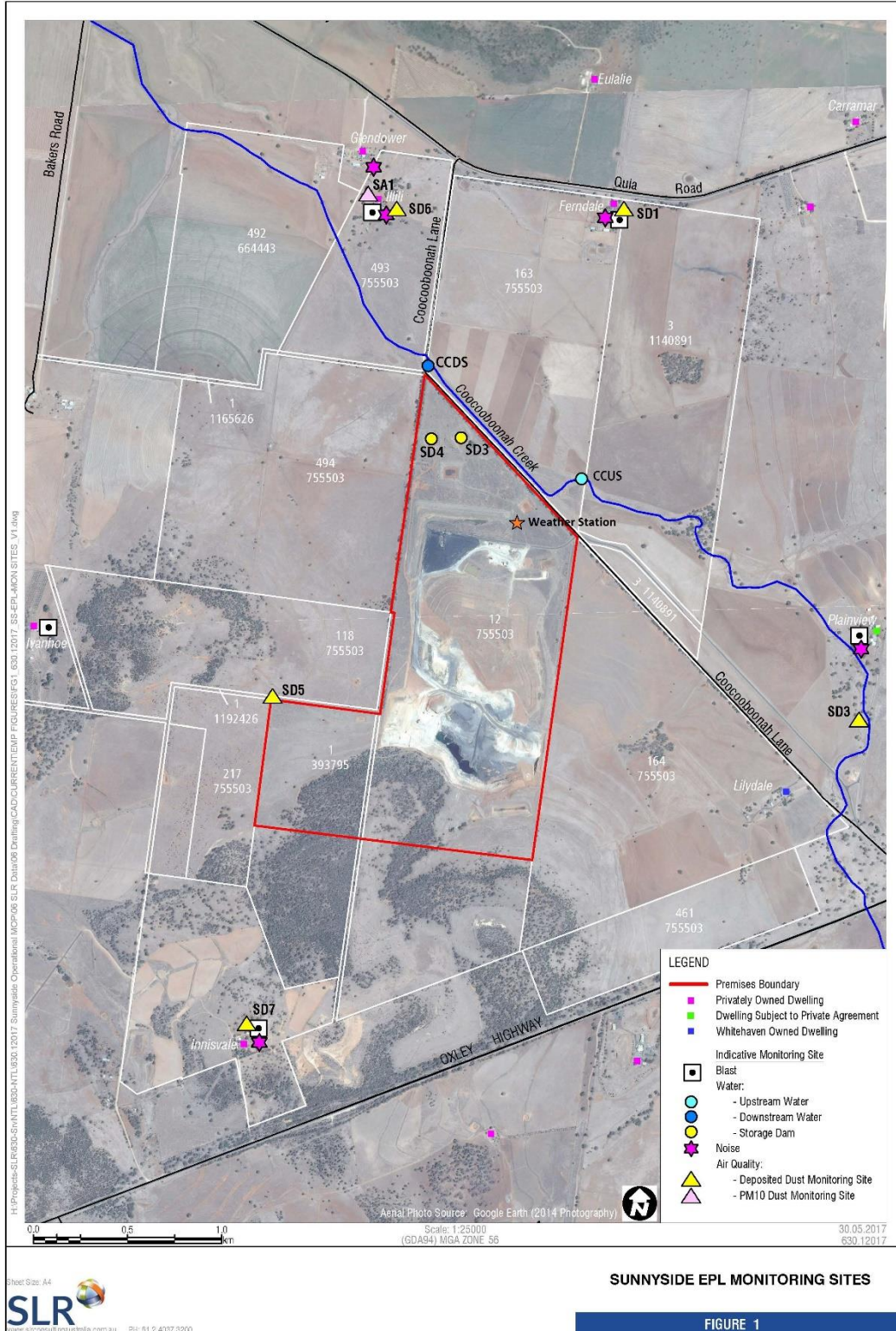
**Table 4-3 Summary of noise assessment at Point 15**

Date	Time	Noise Limits	Mine $L_{Aeq}$ Noise Level (dB)		
		$L_{Aeq,15 min}$	Measured Mine Contribution	Additional LF Penalty	Exceedance
09/03/2020	16:34	35	<23 (I/A) <sup>1</sup>	-	0
	16:49	35	<25 (I/A) <sup>1</sup>	-	0
	17:04	35	<26 (I/A) <sup>1</sup>	-	0
	17:20	35	<25 (I/A) <sup>1</sup>	-	0
	17:35	35	<24 (I/A) <sup>1</sup>	-	0
	17:50	35	<30	-	0
	18:05	35	<30 (I/A) <sup>1</sup>	-	0
	18:20	35	<26 (I/A) <sup>1</sup>	-	0

<sup>1</sup> Where mine noise was inaudible throughout the entire measurement, it is assumed that the contribution is less than 10 dB below the measured  $L_{Aeq}$ .

## SUNNYSIDE COAL MINE – MONTHLY MONITORING SUMMARY

Figure 1 – EPL 12957 Monitoring Locations



## SUNNYSIDE COAL MINE – MONTHLY MONITORING SUMMARY

### Site Information

EPL No: 12957

EPA Website Link: <http://epa.nsw.gov.au/prpoeoapp/ViewPOEOLicence.aspx?DOCID=40292&SYSUID=1&LICID=12957>

Licensee: Namoi Mining Pty Ltd

Licensee Address: Sunnyside Coal Project, 259 Coocooboona Lane, GUNNEDAH NSW 2380

EPL Monitoring Points: See Figure 1 below

Sampling Period: April 2020

Obtained Date: 14th May 2020

Publication Date: 20<sup>th</sup> May 2020

Table 1 - No Pollutant Limits Apply

EPL ID	Pollutant	Units of Measure	Monitoring Frequency	No. of Samples for the Month	Date(s) Sampled	Date(s) Obtained	Min Value	Mean Value	Median Value	Max or Only Value
1	Particulates-Deposited Matter	g/m <sup>2</sup> /month	Continuous	1	17/04/20	27/04/20	-	-	-	2.4
2	Particulates-Deposited Matter	g/m <sup>2</sup> /month	Continuous	1	17/04/20	27/04/20	-	-	-	0.9
4	Particulates-Deposited Matter	g/m <sup>2</sup> /month	Continuous	1	17/04/20	27/04/20	-	-	-	0.8
5	Particulates-Deposited Matter	g/m <sup>2</sup> /month	Continuous	1	17/04/20	27/04/20	-	-	-	1.7
6	Particulates-Deposited Matter	g/m <sup>2</sup> /month	Continuous	1	17/04/20	27/04/20	-	-	-	0.8
7	PM <sub>10</sub>	µg/m <sup>3</sup>	Every 6 days	5	Various	14/05/20	5.5	8.7	7.7	14.6
9	Conductivity	µS/cm	Special Frequency 1*	-	-	-	-	-	-	-
	Total organic carbon	mg/L					-	-	-	-
10	Conductivity	µS/cm	Special Frequency 1*	-	-	-	-	-	-	-
	Total organic carbon	mg/L					-	-	-	-
11	TSS	mg/L		-	-	-	-	-	-	-



## SUNNYSIDE COAL MINE – MONTHLY MONITORING SUMMARY

EPL ID	Pollutant	Units of Measure	Monitoring Frequency	No. of Samples for the Month	Date(s) Sampled	Date(s) Obtained	Min Value	Mean Value	Median Value	Max or Only Value
	Conductivity	µS/cm	Special Frequency 2**	-			-	-	-	-
	Oil & Grease	mg/L		-			-	-		
	pH	pH		-			-	-		
	Total organic carbon	mg/L		-			-	-		
12	TSS	mg/L	Special Frequency 2**	-			-	-	-	-
	Conductivity	µS/cm		-			-	-		
	Oil & Grease	mg/L		-			-	-		
	pH	pH		-			-	-		
	Total organic carbon	mg/L		-			-	-		

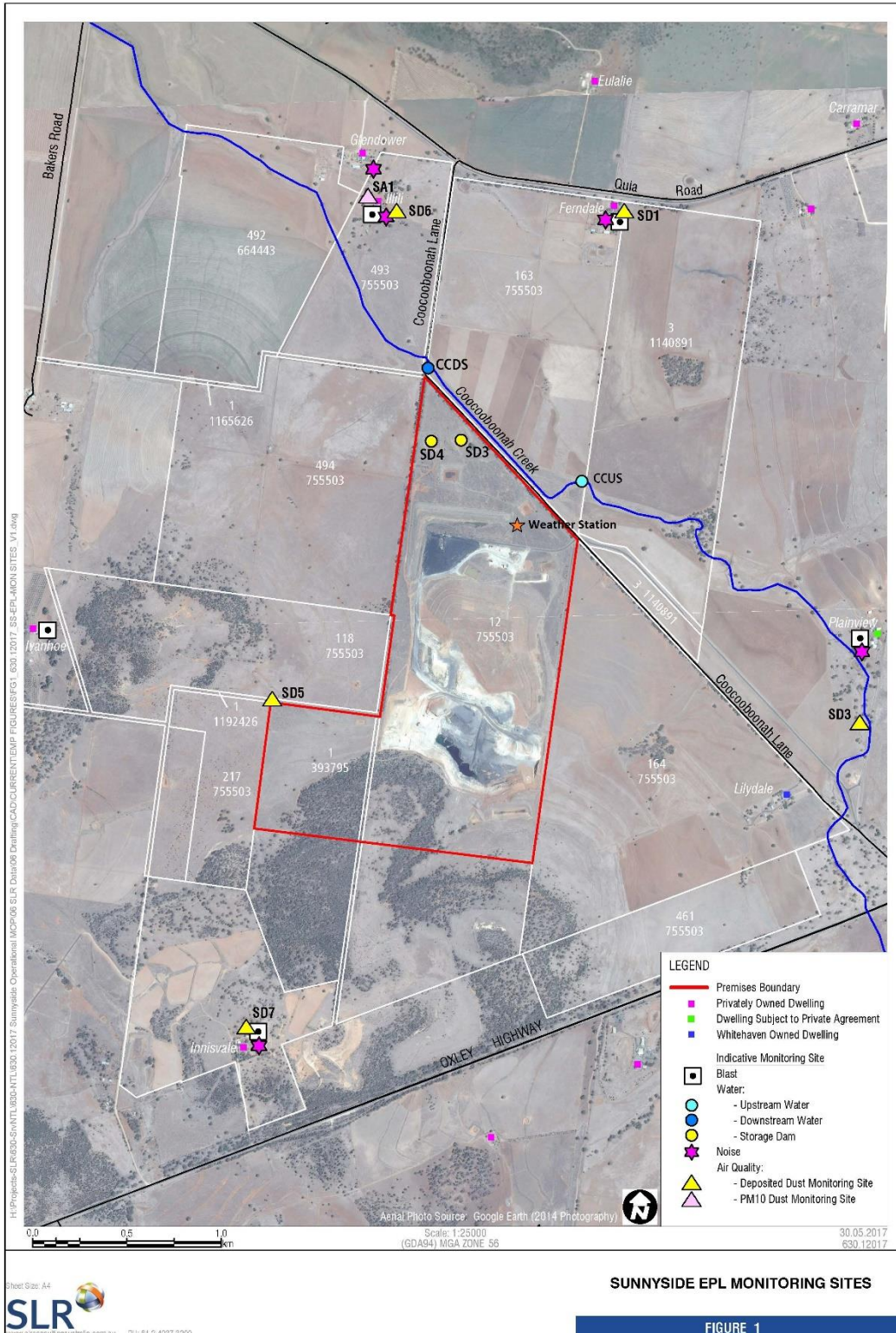
**Table 2 - Pollutant Limits Apply**

EPL ID	Pollutant	Units of Measure	Monitoring Frequency	No. of Samples for the Month	Date Sampled	Date Obtained	Min Value	Max Value	100%ile Limit	Exceedance (Yes/No)	Comments
9	TSS	mg/L	Special Frequency 1*	0	-	-	-	-	50	-	No discharge
	Oil & Grease	mg/L		0			-	-	10	-	No discharge
	pH	pH		0			-	-	6.5-8.5	-	No discharge
10	TSS	mg/L	Special Frequency 1*	0	-	-	-	-	50	-	No discharge
	Oil & Grease	mg/L		0			-	-	10	-	No discharge
	pH	pH		0			-	-	6.5-8.5	-	No discharge

\* Special Frequency 1 means the collection of samples as soon as practicable after each discharge commences and in any case not more than 12 hours after each discharge commences.

\*\* Special Frequency 2 means collection of samples quarterly (in the event of flow during the quarter) at a time when there is flow and as soon as practicable after each wet weather discharge from points 9 and 10 commences and in any case not more than 12 hours after each discharge commences.

Figure 1 – EPL 12957 Monitoring Locations





## SUNNYSIDE COAL MINE – MONTHLY MONITORING SUMMARY

### Site Information

**EPL No:** 12957

**EPA Website Link:** <http://epa.nsw.gov.au/prpoeoapp/ViewPOEOLicence.aspx?DOCID=40292&SYSUID=1&LICID=12957>

**Licensee:** Namoi Mining Pty Ltd

**Licensee Address:** Sunnyside Coal Project, 259 Coocooboona Lane, GUNNEDAH NSW 2380

**EPL Monitoring Points:** See Figure 1 below

**Sampling Period:** May 2020

**Obtained Date:** 14<sup>th</sup> June 2020

**Publication Date:** 20<sup>th</sup> June 2020

**Table 1 - No Pollutant Limits Apply**

EPL ID	Pollutant	Units of Measure	Monitoring Frequency	No. of Samples for the Month	Date(s) Sampled	Date(s) Obtained	Min Value	Mean Value	Median Value	Max or Only Value
1	Particulates-Deposited Matter	g/m <sup>2</sup> /month	Continuous	1	19/05/2020	27/05/20	-	-	-	2.4
2	Particulates-Deposited Matter	g/m <sup>2</sup> /month	Continuous	1	19/05/2020	27/05/20	-	-	-	0.9
4	Particulates-Deposited Matter	g/m <sup>2</sup> /month	Continuous	1	19/05/2020	27/05/20	-	-	-	0.8
5	Particulates-Deposited Matter	g/m <sup>2</sup> /month	Continuous	1	19/05/2020	27/05/20	-	-	-	1.7
6	Particulates-Deposited Matter	g/m <sup>2</sup> /month	Continuous	1	19/05/2020	27/05/20	-	-	-	0.8
7	PM <sub>10</sub>	µg/m <sup>3</sup>	Every 6 days	5	Various	14/06/20	0.1	3.82	3.1	7.4
9	Conductivity	µS/cm	Special Frequency 1*	-	-	-	-	-	-	-
	Total organic carbon	mg/L					-	-	-	-
10	Conductivity	µS/cm	Special Frequency 1*	-	-	-	-	-	-	-
	Total organic carbon	mg/L					-	-	-	-
11	TSS	mg/L		-	-	-	-	-	-	-

## SUNNYSIDE COAL MINE – MONTHLY MONITORING SUMMARY

EPL ID	Pollutant	Units of Measure	Monitoring Frequency	No. of Samples for the Month	Date(s) Sampled	Date(s) Obtained	Min Value	Mean Value	Median Value	Max or Only Value
	Conductivity	µS/cm	Special Frequency 2**	-			-	-	-	-
	Oil & Grease	mg/L		-			-	-		
	pH	pH		-			-	-		
	Total organic carbon	mg/L		-			-	-		
12	TSS	mg/L	Special Frequency 2**	-	-	-	-	-	-	-
	Conductivity	µS/cm		-			-	-		
	Oil & Grease	mg/L		-			-	-		
	pH	pH		-			-	-		
	Total organic carbon	mg/L		-			-	-		

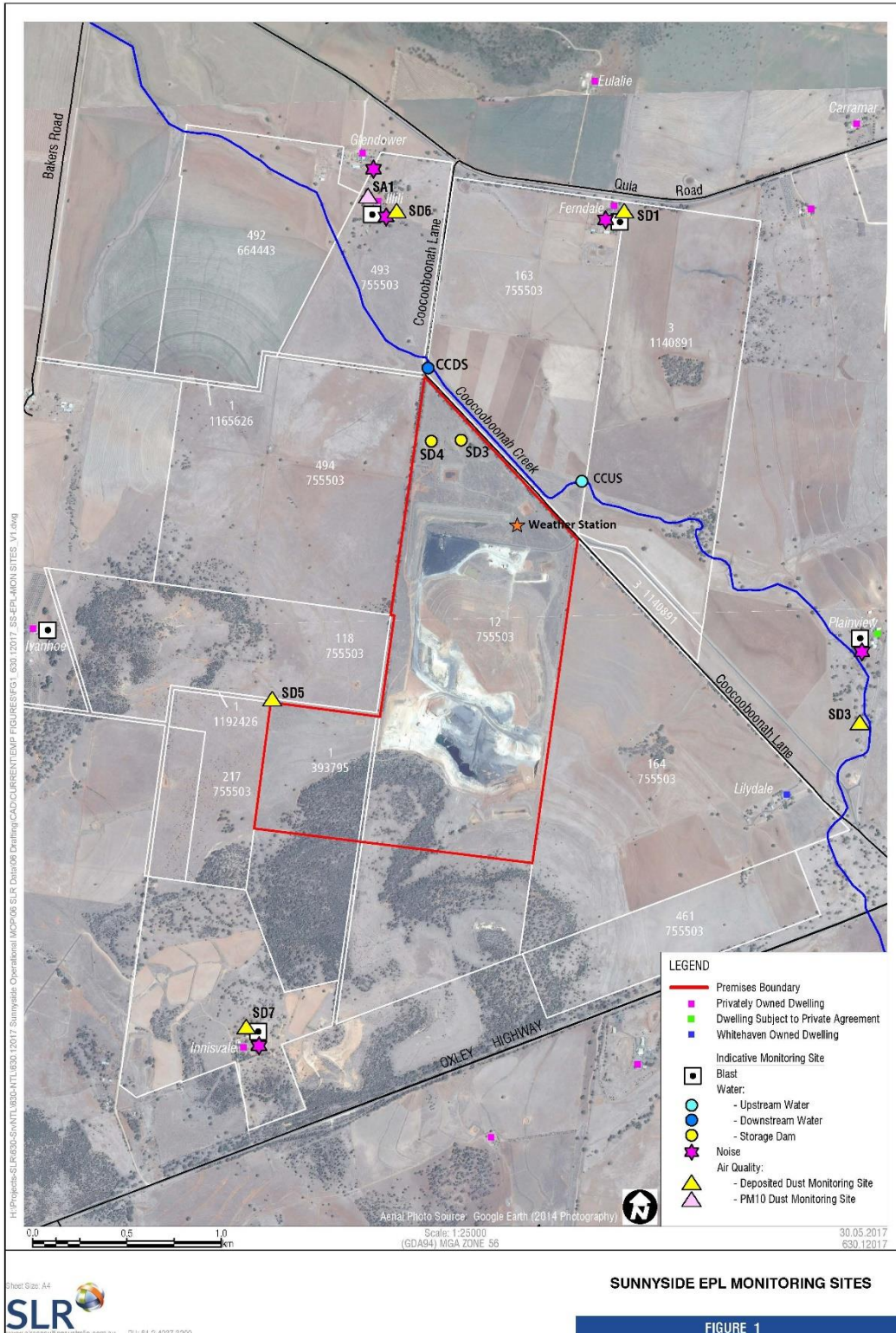
**Table 2 - Pollutant Limits Apply**

EPL ID	Pollutant	Units of Measure	Monitoring Frequency	No. of Samples for the Month	Date Sampled	Date Obtained	Min Value	Max Value	100%ile Limit	Exceedance (Yes/No)	Comments
9	TSS	mg/L	Special Frequency 1*	0	-	-	-	-	50	-	No discharge
	Oil & Grease	mg/L		0			-	-	10	-	No discharge
	pH	pH		0			-	-	6.5-8.5	-	No discharge
10	TSS	mg/L	Special Frequency 1*	0	-	-	-	-	50	-	No discharge
	Oil & Grease	mg/L		0			-	-	10	-	No discharge
	pH	pH		0			-	-	6.5-8.5	-	No discharge

\* Special Frequency 1 means the collection of samples as soon as practicable after each discharge commences and in any case not more than 12 hours after each discharge commences.

\*\* Special Frequency 2 means collection of samples quarterly (in the event of flow during the quarter) at a time when there is flow and as soon as practicable after each wet weather discharge from points 9 and 10 commences and in any case not more than 12 hours after each discharge commences.

Figure 1 – EPL 12957 Monitoring Locations



## SUNNYSIDE COAL MINE – MONTHLY MONITORING SUMMARY

### Site Information

**EPL No:** 12957

**EPA Website Link:** <http://epa.nsw.gov.au/prpoeoapp/ViewPOEOLicence.aspx?DOCID=40292&SYSUID=1&LICID=12957>

**Licensee:** Namoi Mining Pty Ltd

**Licensee Address:** Sunnyside Coal Project, 259 Coocooboona Lane, GUNNEDAH NSW 2380

**EPL Monitoring Points:** See Figure 1 below

**Sampling Period:** June 2020

**Obtained Date:** 16<sup>th</sup> July 2020

**Publication Date:** 17<sup>th</sup> July 2020

**Table 1 - No Pollutant Limits Apply**

EPL ID	Pollutant	Units of Measure	Monitoring Frequency	No. of Samples for the Month	Date(s) Sampled	Date(s) Obtained	Min Value	Mean Value	Median Value	Max or Only Value
1	Particulates-Deposited Matter	g/m <sup>2</sup> /month	Continuous	1	18/06/20	27/06/20	-	-	-	0.6
2	Particulates-Deposited Matter	g/m <sup>2</sup> /month	Continuous	1	18/06/20	27/06/20	-	-	-	2.7
4	Particulates-Deposited Matter	g/m <sup>2</sup> /month	Continuous	1	18/06/20	27/06/20	-	-	-	0.3
5	Particulates-Deposited Matter	g/m <sup>2</sup> /month	Continuous	1	18/06/20	27/06/20	-	-	-	0.4
6	Particulates-Deposited Matter	g/m <sup>2</sup> /month	Continuous	1	17/06/20	27/06/20	-	-	-	0.4
7	PM <sub>10</sub>	µg/m <sup>3</sup>	Every 6 days	5	Various	14/07/20	0.7	4.76	6.0	6.5
9	Conductivity	µS/cm	Special Frequency 1*	-	-	-	-	-	-	-
	Total organic carbon	mg/L					-	-	-	-
10	Conductivity	µS/cm	Special Frequency 1*	-	-	-	-	-	-	-
	Total organic carbon	mg/L					-	-	-	-
11	TSS	mg/L		-	-	-	-	-	-	-

## SUNNYSIDE COAL MINE – MONTHLY MONITORING SUMMARY

EPL ID	Pollutant	Units of Measure	Monitoring Frequency	No. of Samples for the Month	Date(s) Sampled	Date(s) Obtained	Min Value	Mean Value	Median Value	Max or Only Value
	Conductivity	µS/cm	Special Frequency 2**	-			-	-	-	-
	Oil & Grease	mg/L		-			-	-		
	pH	pH		-			-	-		
	Total organic carbon	mg/L		-			-	-		
12	TSS	mg/L	Special Frequency 2**	-	-	-	-	-	-	-
	Conductivity	µS/cm		-			-	-		
	Oil & Grease	mg/L		-			-	-		
	pH	pH		-			-	-		
	Total organic carbon	mg/L		-			-	-		

**Table 2 - Pollutant Limits Apply**

EPL ID	Pollutant	Units of Measure	Monitoring Frequency	No. of Samples for the Month	Date Sampled	Date Obtained	Min Value	Max Value	100%ile Limit	Exceedance (Yes/No)	Comments
9	TSS	mg/L	Special Frequency 1*	0	-	-	-	-	50	-	No discharge
	Oil & Grease	mg/L		0			-	10	-	No discharge	
	pH	pH		0			-	6.5-8.5	-	No discharge	
10	TSS	mg/L	Special Frequency 1*	0	-	-	-	-	50	-	No discharge
	Oil & Grease	mg/L		0			-	10	-	No discharge	
	pH	pH		0			-	6.5-8.5	-	No discharge	

\* Special Frequency 1 means the collection of samples as soon as practicable after each discharge commences and in any case not more than 12 hours after each discharge commences.

\*\* Special Frequency 2 means collection of samples quarterly (in the event of flow during the quarter) at a time when there is flow and as soon as practicable after each wet weather discharge from points 9 and 10 commences and in any case not more than 12 hours after each discharge commences.



Attended noise monitoring – Noise levels were compliant at all locations,

**Table 4-1 Summary of noise assessment at Point 13**

Date	Time	Noise Limits	Mine $L_{Aeq}$ Noise Level (dB)		
		$LA_{eq,15\ min}$	Measured Mine Contribution	Additional LF Penalty	Exceedance
23/06/2020	19:10	35	<7 (I/A) <sup>1</sup>	-	0
	19:26	35	<8 (I/A) <sup>1</sup>	-	0
24/06/2020	20:02	35	<11 (I/A) <sup>1</sup>	-	0
	20:19	35	<11 (I/A) <sup>1</sup>	-	0
	15:16	35	<11 (I/A) <sup>1</sup>	-	0
25/06/2020	15:32	35	<12 (I/A) <sup>1</sup>	-	0
	15:48	35	<11 (I/A) <sup>1</sup>	-	0
	16:03	35	<13 (I/A) <sup>1</sup>	-	0
	16:18	35	<14 (I/A) <sup>1</sup>	-	0
	20:16	35	<8 (I/A) <sup>1</sup>	-	0
	20:32	35	<8 (I/A) <sup>1</sup>	-	0

<sup>1</sup> Where mine noise was inaudible throughout the entire measurement, it is assumed that the contribution is less than 10 dB below the measured  $L_{A90}$ .

**Table 4-2 Summary of noise assessment at Point 14**

Date	Time	Noise Limits	Mine $L_{Aeq}$ Noise Level (dB)		
		$LA_{eq,15\ min}$	Measured Mine Contribution	Additional LF Penalty	Exceedance
23/06/2020	17:22	35	<13 (I/A) <sup>1</sup>	-	0
	18:00	35	<20 (I/A) <sup>1</sup>	-	0
24/06/2020	13:44	35	<15 (I/A) <sup>1</sup>	-	0
	14:00	35	<25	-	0
	14:18	35	<25	-	0
	18:52	35	<13 (I/A) <sup>1</sup>	-	0
	19:08	35	<11 (I/A) <sup>1</sup>	-	0
25/06/2020	11:33	35	<25	-	0
	11:50	35	<25	-	0
	12:05	35	<15 (I/A) <sup>1</sup>	-	0
	12:20	35	<17 (I/A) <sup>1</sup>	-	0
	12:36	35	<11 (I/A) <sup>1</sup>	-	0
	12:51	35	<25	-	0
	19:19	35	<9 (I/A) <sup>1</sup>	-	0

<sup>1</sup> Where mine noise was inaudible throughout the entire measurement, it is assumed that the contribution is less than 10 dB below the measured  $L_{A90}$ .





## SUNNYSIDE COAL MINE – MONTHLY MONITORING SUMMARY

**Table 4-3 Summary of noise assessment at Point 15**

Date	Time	Noise Limits	Mine L <sub>Aeq</sub> Noise Level (dB)		
		L <sub>Aeq,15 min</sub>	Measured Mine Contribution	Additional LF Penalty	Exceedance
23/06/2020	18:39	35	<8 (I/A) <sup>1</sup>	-	0
	18:55	35	<7 (I/A) <sup>1</sup>	-	0
24/06/2020	19:46	35	<10 (I/A) <sup>1</sup>	-	0
	13:16	35	<11 (I/A) <sup>1</sup>	-	0
	13:31	35	<11 (I/A) <sup>1</sup>	-	0
25/06/2020	13:47	35	<20	-	0
	14:03	35	<15 (I/A) <sup>1</sup>	-	0
	14:18	35	<15 (I/A) <sup>1</sup>	-	0
	14:34	35	<13 (I/A) <sup>1</sup>	-	0
	19:34	35	<7 (I/A) <sup>1</sup>	-	0
	19:50	35	<7 (I/A) <sup>1</sup>	-	0

<sup>1</sup> Where mine noise was inaudible throughout the entire measurement, it is assumed that the contribution is less than 10 dB below the measured L<sub>A90</sub>.

**Table 4-4 Summary of noise assessment at Point 16**

Date	Time	Noise Limits	Mine L <sub>Aeq</sub> Noise Level (dB)		
		L <sub>Aeq,15 min</sub>	Measured Mine Contribution	Additional LF Penalty	Exceedance
23/06/2020	18:40	35	<13 (I/A) <sup>1</sup>	-	0
	18:55	35	<13 (I/A) <sup>1</sup>	-	0
24/06/2020	13:00	35	<21 (I/A) <sup>1</sup>	-	0
	18:59	35	<23 (I/A) <sup>1</sup>	-	0
	19:14	35	<13 (I/A) <sup>1</sup>	-	0
25/06/2020	11:47	35	<23 (I/A) <sup>1</sup>	-	0
	12:02	35	<22 (I/A) <sup>1</sup>	-	0
	12:17	35	<17 (I/A) <sup>1</sup>	-	0
	12:32	35	<17 (I/A) <sup>1</sup>	-	0
	12:47	35	<23 (I/A) <sup>1</sup>	-	0
	13:02	35	<19 (I/A) <sup>1</sup>	-	0
	19:11	35	<13 (I/A) <sup>1</sup>	-	0
19:26	35	<13 (I/A) <sup>1</sup>	-	0	

<sup>1</sup> Where mine noise was inaudible throughout the entire measurement, it is assumed that the contribution is less than 10 dB below the measured L<sub>A90</sub>.

## SUNNYSIDE COAL MINE – MONTHLY MONITORING SUMMARY

**Table 4-5 Summary of noise assessment at Point 17**

Date	Time	Noise Limits	Mine $L_{Aeq}$ Noise Level (dB)		
		$L_{Aeq,15\ min}$	Measured Mine Contribution	Additional LF Penalty	Exceedance
23/06/2020	17:15	35	<14 (I/A) <sup>1</sup>	-	0
	17:30	35	<12 (I/A) <sup>1</sup>	-	0
	17:45	35	<15 (I/A) <sup>1</sup>	-	0
	18:00	35	<16 (I/A) <sup>1</sup>	-	0
	18:15	35	<11 (I/A) <sup>1</sup>	-	0
24/06/2020	20:13	35	<17 (I/A) <sup>1</sup>	-	0
	20:28	35	<16 (I/A) <sup>1</sup>	-	0
25/06/2020	15:08	35	<16 (I/A) <sup>1</sup>	-	0
	15:23	35	<16 (I/A) <sup>1</sup>	-	0
	15:38	35	<15 (I/A) <sup>1</sup>	-	0
	15:53	35	<14 (I/A) <sup>1</sup>	-	0
	16:08	35	<16 (I/A) <sup>1</sup>	-	0
	16:23	35	<17 (I/A) <sup>1</sup>	-	0
	20:23	35	<9 (I/A) <sup>1</sup>	-	0
20:38	35	<10 (I/A) <sup>1</sup>	-	0	

<sup>1</sup> Where mine noise was inaudible throughout the entire measurement, it is assumed that the contribution is less than 10 dB below the measured  $L_{A90}$ .

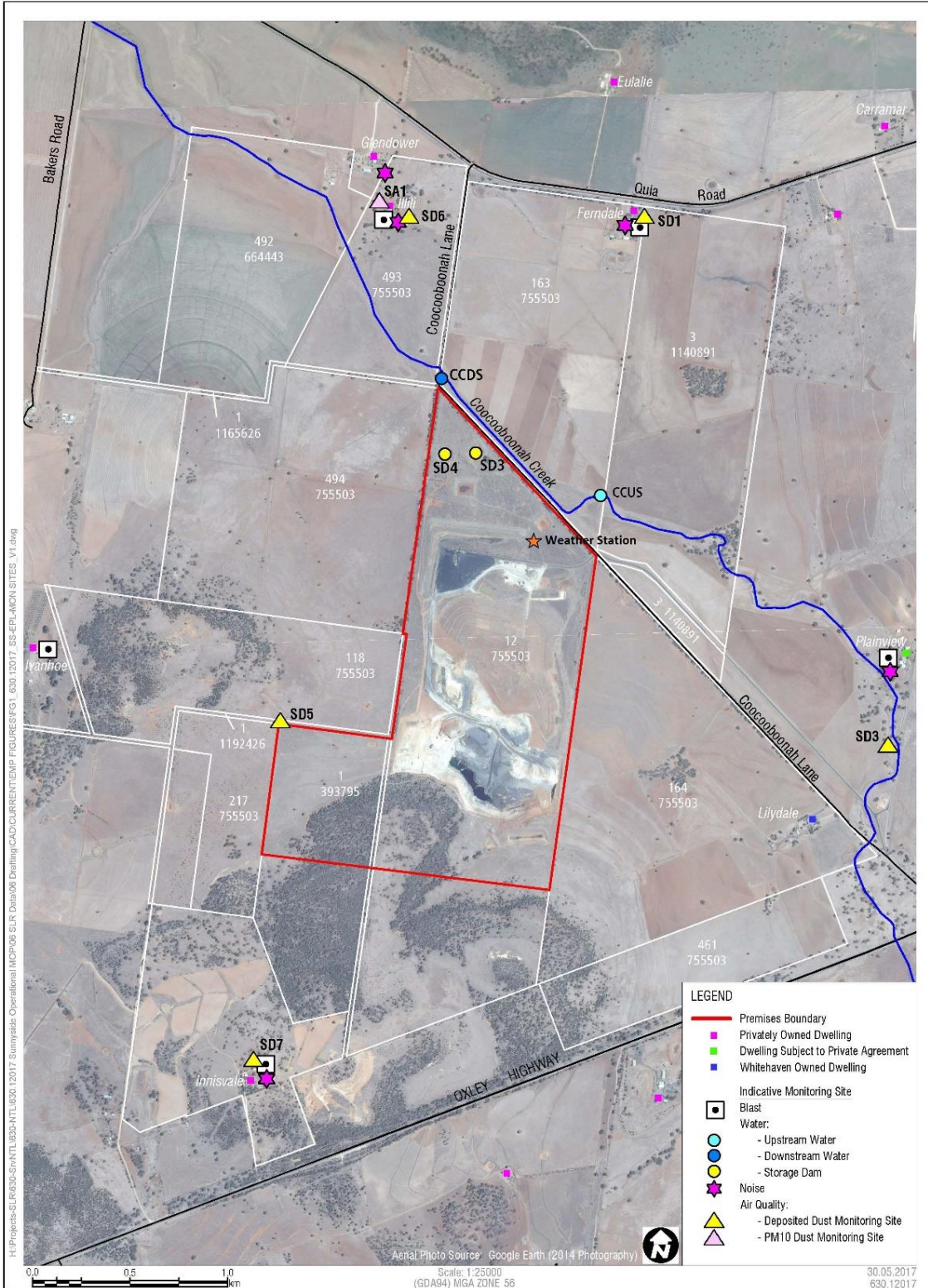
**Table 4-6 Summary of noise assessment at Woodlawn**

Date	Time	Noise Limits	Mine $L_{Aeq}$ Noise Level (dB)		
		$L_{Aeq,15\ min}$	Measured Mine Contribution	Additional LF Penalty	Exceedance
23/06/2020	19:19	35	<8 (I/A) <sup>1</sup>	-	0
	19:34	35	<10 (I/A) <sup>1</sup>	-	0
24/06/2020	13:41	35	<19 (I/A) <sup>1</sup>	-	0
	13:57	35	<21 (I/A) <sup>1</sup>	-	0
	14:12	35	<18 (I/A) <sup>1</sup>	-	0
	19:51	35	<14 (I/A) <sup>1</sup>	-	0
25/06/2020	13:28	35	<18 (I/A) <sup>1</sup>	-	0
	13:43	35	<19 (I/A) <sup>1</sup>	-	0
	13:58	35	<15 (I/A) <sup>1</sup>	-	0
	14:13	35	<22 (I/A) <sup>1</sup>	-	0
	14:28	35	<13 (I/A) <sup>1</sup>	-	0
	14:43	35	<15 (I/A) <sup>1</sup>	-	0
	19:48	35	<10 (I/A) <sup>1</sup>	-	0
20:03	35	<11 (I/A) <sup>1</sup>	-	0	

<sup>1</sup> Where mine noise was inaudible throughout the entire measurement, it is assumed that the contribution is less than 10 dB below the measured  $L_{A90}$ .

## SUNNYSIDE COAL MINE – MONTHLY MONITORING SUMMARY

Figure 1 – EPL 12957 Monitoring Locations



**SUNNYSIDE COAL MINE – MONTHLY MONITORING SUMMARY**
**Site Information**
**EPL No:** 12957

**EPA Website Link:** <http://epa.nsw.gov.au/prpoeoapp/ViewPOEOLicence.aspx?DOCID=40292&SYSUID=1&LICID=12957>
**Licensee:** Namoi Mining Pty Ltd

**Licensee Address:** Sunnyside Coal Project, 259 Coocooboona Lane, GUNNEDAH NSW 2380

**EPL Monitoring Points:** See Figure 1 below

**Sampling Period:** July 2020

**Obtained Date:** 18<sup>th</sup> August 2020

**Publication Date:** 20<sup>th</sup> August 2020

**Table 1 - No Pollutant Limits Apply**

EPL ID	Pollutant	Units of Measure	Monitoring Frequency	No. of Samples for the Month	Date(s) Sampled	Date(s) Obtained	Min Value	Mean Value	Median Value	Max or Only Value
1	Particulates-Deposited Matter	g/m <sup>2</sup> /month	Continuous	1	17/07/20	29/07/20	-	-	-	0.3
2	Particulates-Deposited Matter	g/m <sup>2</sup> /month	Continuous	1	17/07/20	29/07/20	-	-	-	2.1
4	Particulates-Deposited Matter	g/m <sup>2</sup> /month	Continuous	1	17/07/20	29/07/20	-	-	-	0.3
5	Particulates-Deposited Matter	g/m <sup>2</sup> /month	Continuous	1	17/07/20	29/07/20	-	-	-	0.4
6	Particulates-Deposited Matter	g/m <sup>2</sup> /month	Continuous	1	17/07/20	29/07/20	-	-	-	0.5
7	PM <sub>10</sub>	µg/m <sup>3</sup>	Every 6 days	6	Various	18/08/20	0.05	2.81	3.2	5.4
9	Conductivity	µS/cm	Special Frequency 1*	-	-	-	-	-	-	-
	Total organic carbon	mg/L					-	-	-	-
10	Conductivity	µS/cm	Special Frequency 1*	-	-	-	-	-	-	-
	Total organic carbon	mg/L					-	-	-	-
11	TSS	mg/L		-	-	-	-	-	-	-

## SUNNYSIDE COAL MINE – MONTHLY MONITORING SUMMARY

EPL ID	Pollutant	Units of Measure	Monitoring Frequency	No. of Samples for the Month	Date(s) Sampled	Date(s) Obtained	Min Value	Mean Value	Median Value	Max or Only Value
	Conductivity	µS/cm	Special Frequency 2**	-			-	-	-	-
	Oil & Grease	mg/L		-			-	-	-	
	pH	pH		-			-	-	-	
	Total organic carbon	mg/L		-			-	-	-	
12	TSS	mg/L	Special Frequency 2**	-	-	-	-	-	-	-
	Conductivity	µS/cm		-			-	-	-	
	Oil & Grease	mg/L		-			-	-	-	
	pH	pH		-			-	-	-	
	Total organic carbon	mg/L		-			-	-	-	

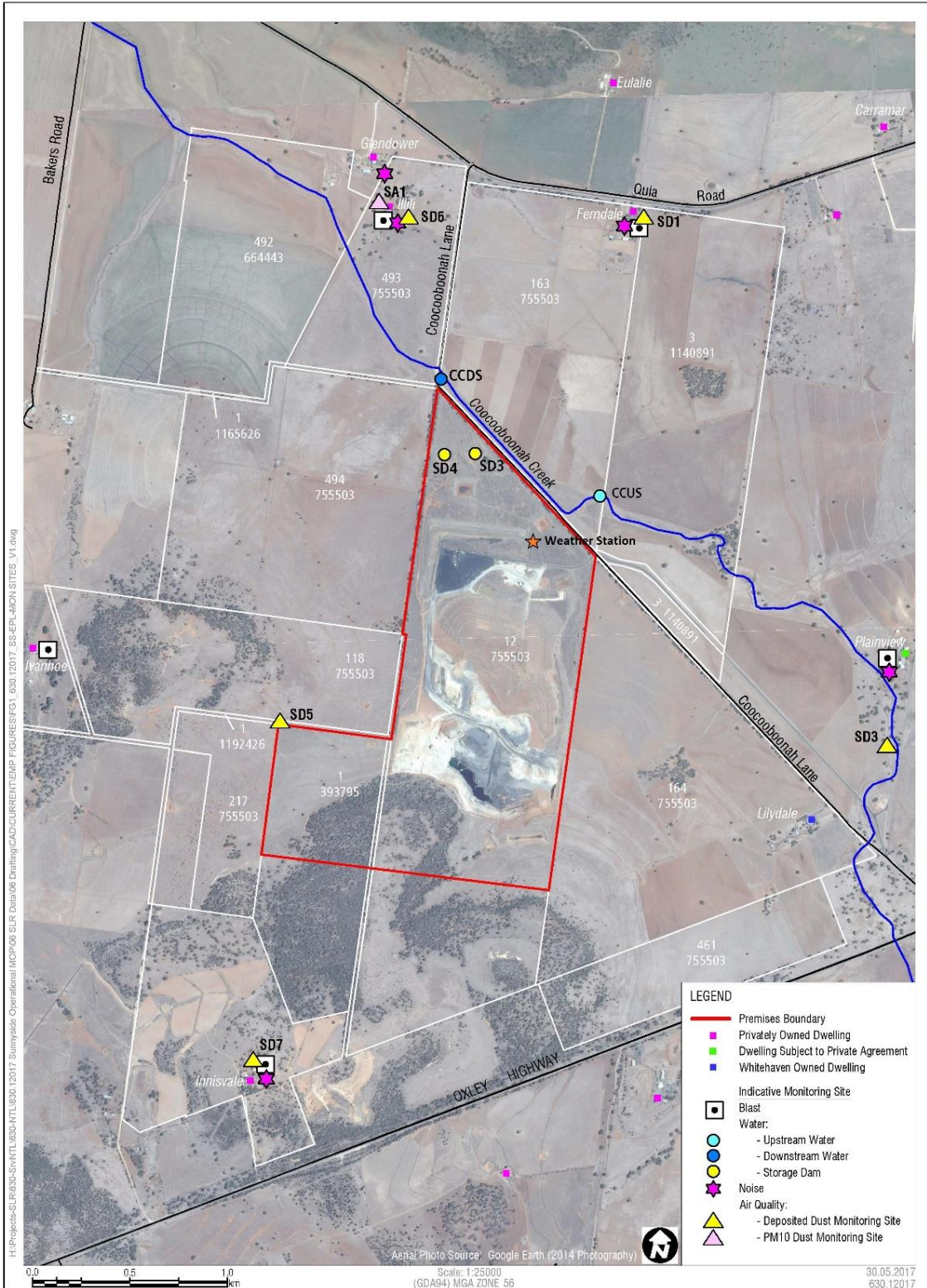
**Table 2 - Pollutant Limits Apply**

EPL ID	Pollutant	Units of Measure	Monitoring Frequency	No. of Samples for the Month	Date Sampled	Date Obtained	Min Value	Max Value	100%ile Limit	Exceedance (Yes/No)	Comments
9	TSS	mg/L	Special Frequency 1*	0	-	-	-	-	50	-	No discharge
	Oil & Grease	mg/L		0			-	-	10	-	No discharge
	pH	pH		0			-	-	6.5-8.5	-	No discharge
10	TSS	mg/L	Special Frequency 1*	0	-	-	-	-	50	-	No discharge
	Oil & Grease	mg/L		0			-	-	10	-	No discharge
	pH	pH		0			-	-	6.5-8.5	-	No discharge

\* Special Frequency 1 means the collection of samples as soon as practicable after each discharge commences and in any case not more than 12 hours after each discharge commences.

\*\* Special Frequency 2 means collection of samples quarterly (in the event of flow during the quarter) at a time when there is flow and as soon as practicable after each wet weather discharge from points 9 and 10 commences and in any case not more than 12 hours after each discharge commences.

Figure 1 – EPL 12957 Monitoring Locations



**SUNNYSIDE COAL MINE – MONTHLY MONITORING SUMMARY**
**Site Information**
**EPL No:** 12957

**EPA Website Link:** <http://epa.nsw.gov.au/prpoeoapp/ViewPOEOLicence.aspx?DOCID=40292&SYSUID=1&LICID=12957>
**Licensee:** Namoi Mining Pty Ltd

**Licensee Address:** Sunnyside Coal Project, 259 Coocooboona Lane, GUNNEDAH NSW 2380

**EPL Monitoring Points:** See Figure 1 below

**Sampling Period:** August 2020

**Obtained Date:** 14th September 2020

**Publication Date:** 18<sup>th</sup> September 2020

**Table 1 - No Pollutant Limits Apply**

EPL ID	Pollutant	Units of Measure	Monitoring Frequency	No. of Samples for the Month	Date(s) Sampled	Date(s) Obtained	Min Value	Mean Value	Median Value	Max or Only Value
1	Particulates-Deposited Matter	g/m <sup>2</sup> /month	Continuous	1	18/08/20	24/08/20	-	-	-	0.9
2	Particulates-Deposited Matter	g/m <sup>2</sup> /month	Continuous	1	18/08/20	24/08/20	-	-	-	1.2
4	Particulates-Deposited Matter	g/m <sup>2</sup> /month	Continuous	1	18/08/20	24/08/20	-	-	-	0.3
5	Particulates-Deposited Matter	g/m <sup>2</sup> /month	Continuous	1	18/08/20	24/08/20	-	-	-	0.4
6	Particulates-Deposited Matter	g/m <sup>2</sup> /month	Continuous	1	18/08/20	24/08/20	-	-	-	0.5
7	PM <sub>10</sub>	µg/m <sup>3</sup>	Every 6 days	5	Various	14/09/20	4.1	6.06	4.3	11.5
9	Conductivity	µS/cm	Special Frequency 1*	-	-	-	-	-	-	-
	Total organic carbon	mg/L					-	-	-	-
10	Conductivity	µS/cm	Special Frequency 1*	-	-	-	-	-	-	-
	Total organic carbon	mg/L					-	-	-	-
11	TSS	mg/L		-	-	-	-	-	-	-

## SUNNYSIDE COAL MINE – MONTHLY MONITORING SUMMARY

EPL ID	Pollutant	Units of Measure	Monitoring Frequency	No. of Samples for the Month	Date(s) Sampled	Date(s) Obtained	Min Value	Mean Value	Median Value	Max or Only Value
	Conductivity	µS/cm	Special Frequency 2**	-			-	-	-	-
	Oil & Grease	mg/L		-			-	-		
	pH	pH		-			-	-		
	Total organic carbon	mg/L		-			-	-		
12	TSS	mg/L	Special Frequency 2**	-	-	-	-	-	-	-
	Conductivity	µS/cm		-			-	-		
	Oil & Grease	mg/L		-			-	-		
	pH	pH		-			-	-		
	Total organic carbon	mg/L		-			-	-		

**Table 2 - Pollutant Limits Apply**

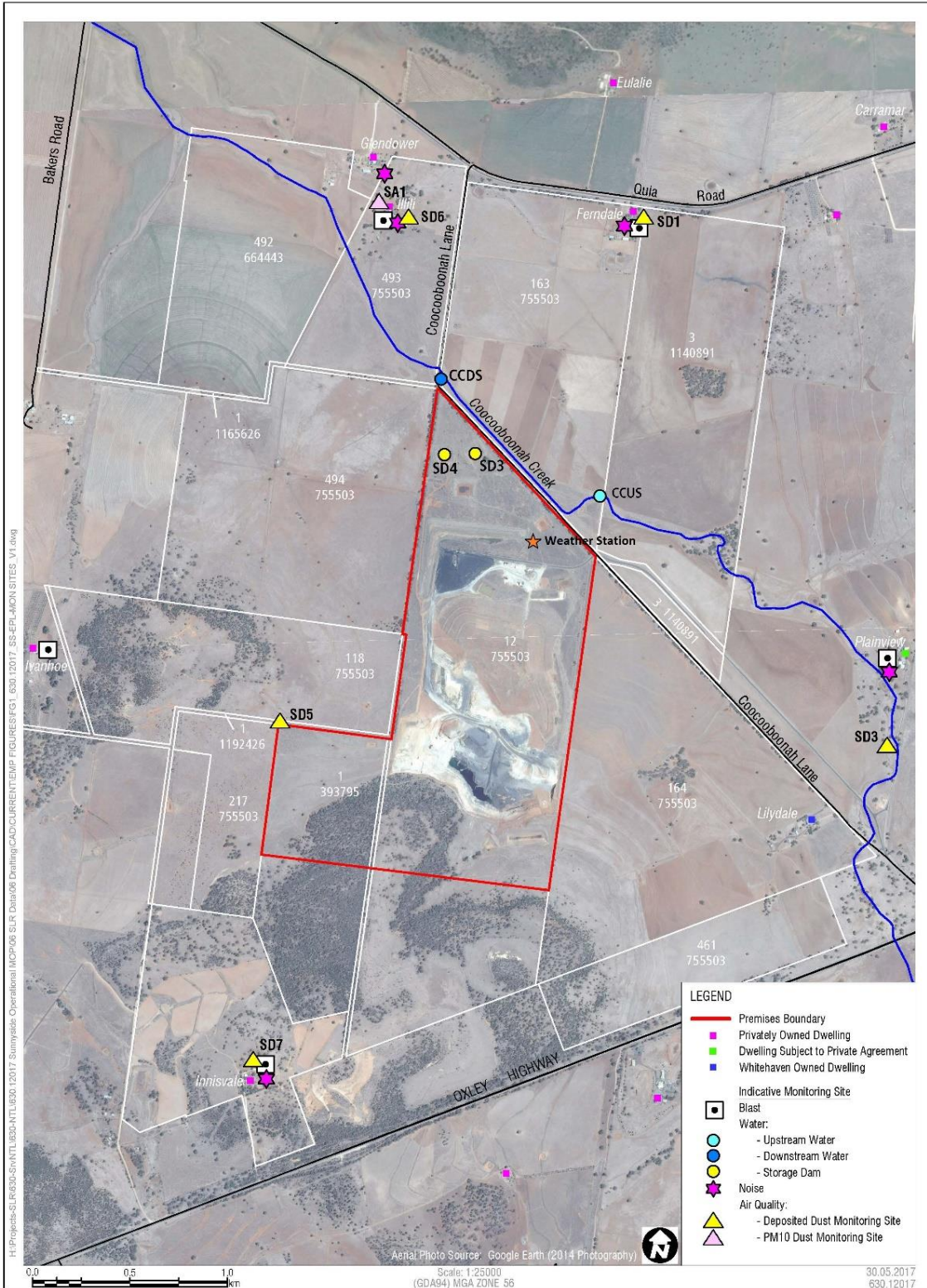
EPL ID	Pollutant	Units of Measure	Monitoring Frequency	No. of Samples for the Month	Date Sampled	Date Obtained	Min Value	Max Value	100%ile Limit	Exceedance (Yes/No)	Comments
9	TSS	mg/L	Special Frequency 1*	0	-	-	-	-	50	-	No discharge
	Oil & Grease	mg/L		0			-	-	10	-	No discharge
	pH	pH		0			-	-	6.5-8.5	-	No discharge
10	TSS	mg/L	Special Frequency 1*	0	-	-	-	-	50	-	No discharge
	Oil & Grease	mg/L		0			-	-	10	-	No discharge
	pH	pH		0			-	-	6.5-8.5	-	No discharge

\* Special Frequency 1 means the collection of samples as soon as practicable after each discharge commences and in any case not more than 12 hours after each discharge commences.

\*\* Special Frequency 2 means collection of samples quarterly (in the event of flow during the quarter) at a time when there is flow and as soon as practicable after each wet weather discharge from points 9 and 10 commences and in any case not more than 12 hours after each discharge commences.



Figure 1 – EPL 12957 Monitoring Locations



## SUNNYSIDE COAL MINE – MONTHLY MONITORING SUMMARY

### Site Information

**EPL No:** 12957

**EPA Website Link:** <http://epa.nsw.gov.au/prpoeoapp/ViewPOEOLicence.aspx?DOCID=40292&SYSUID=1&LICID=12957>

**Licensee:** Namoi Mining Pty Ltd

**Licensee Address:** Sunnyside Coal Project, 259 Coocooboona Lane, GUNNEDAH NSW 2380

**EPL Monitoring Points:** See Figure 1 below

**Sampling Period:** October 2020

**Obtained Date:** 03 November 2020

**Publication Date:** 20<sup>th</sup> November 2020

**Table 1 - No Pollutant Limits Apply**

EPL ID	Pollutant	Units of Measure	Monitoring Frequency	No. of Samples for the Month	Date(s) Sampled	Date(s) Obtained	Min Value	Mean Value	Median Value	Max or Only Value
1	Particulates-Deposited Matter	g/m <sup>2</sup> /month	Continuous	1	15/10/20	21/10/20	-	-	-	0.6
2	Particulates-Deposited Matter	g/m <sup>2</sup> /month	Continuous	1	15/10/20	21/10/20	-	-	-	0.9
4	Particulates-Deposited Matter	g/m <sup>2</sup> /month	Continuous	1	15/10/20	21/10/20	-	-	-	1.2
5	Particulates-Deposited Matter	g/m <sup>2</sup> /month	Continuous	1	15/10/20	21/10/20	-	-	-	0.9
6	Particulates-Deposited Matter	g/m <sup>2</sup> /month	Continuous	1	15/10/20	21/10/20	-	-	-	0.4
7	PM <sub>10</sub>	µg/m <sup>3</sup>	Every 6 days	5	Various	03/11/20	6.8	14.54	10	33.4
9	Conductivity	µS/cm	Special Frequency 1*	-	-	-	-	-	-	-
	Total organic carbon	mg/L					-	-	-	-
10	Conductivity	µS/cm	Special Frequency 1*	-	-	-	-	-	-	-
	Total organic carbon	mg/L					-	-	-	-
11	TSS	mg/L		-	-	-	-	-	-	-

## SUNNYSIDE COAL MINE – MONTHLY MONITORING SUMMARY

EPL ID	Pollutant	Units of Measure	Monitoring Frequency	No. of Samples for the Month	Date(s) Sampled	Date(s) Obtained	Min Value	Mean Value	Median Value	Max or Only Value
	Conductivity	µS/cm	Special Frequency 2**	-			-	-	-	-
	Oil & Grease	mg/L		-			-	-		
	pH	pH		-			-	-		
	Total organic carbon	mg/L		-			-	-		
12	TSS	mg/L	Special Frequency 2**	-			-	-	-	-
	Conductivity	µS/cm		-			-	-		
	Oil & Grease	mg/L		-			-	-		
	pH	pH		-			-	-		
	Total organic carbon	mg/L		-			-	-		

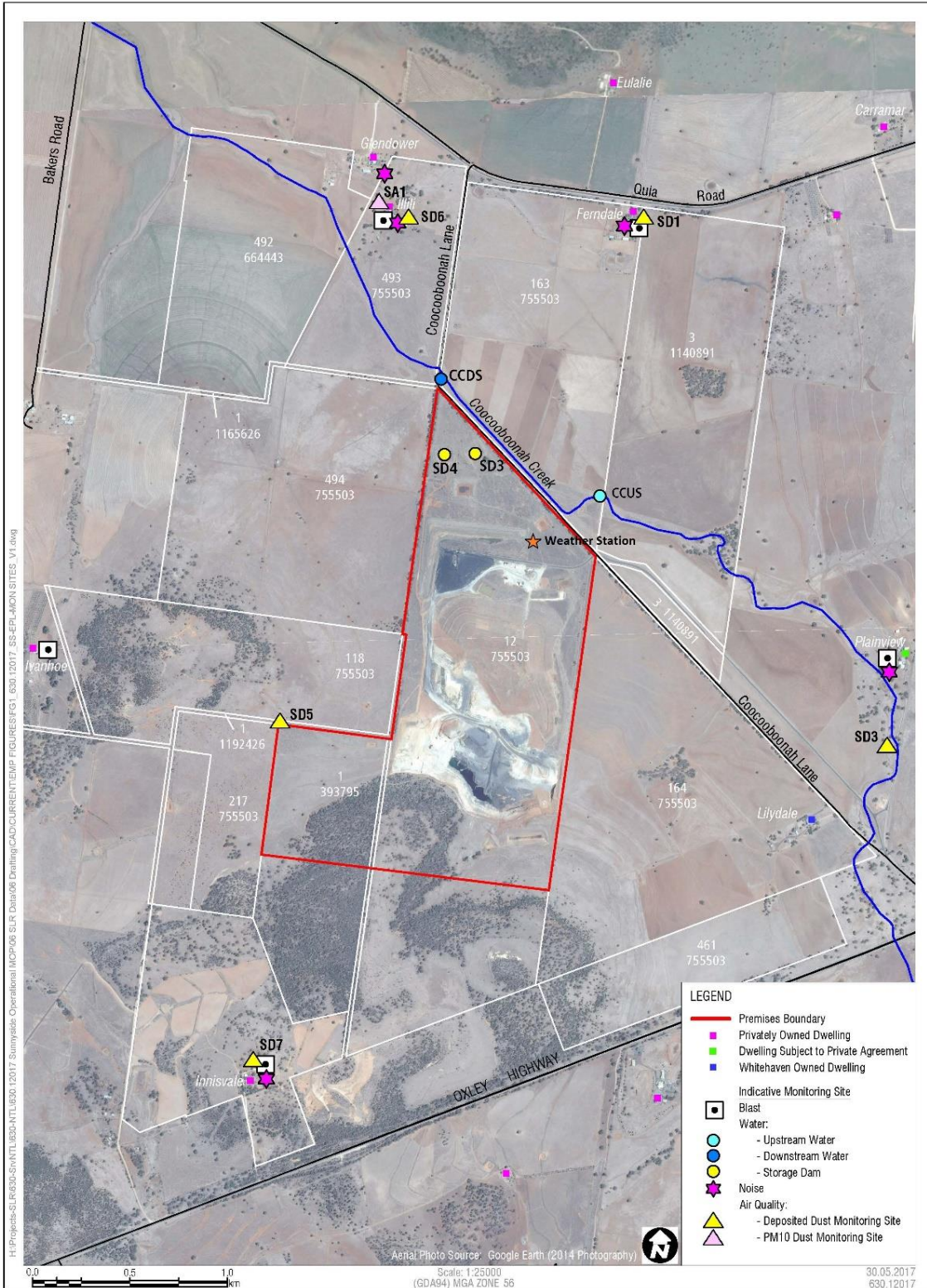
**Table 2 - Pollutant Limits Apply**

EPL ID	Pollutant	Units of Measure	Monitoring Frequency	No. of Samples for the Month	Date Sampled	Date Obtained	Min Value	Max Value	100%ile Limit	Exceedance (Yes/No)	Comments
9	TSS	mg/L	Special Frequency 1*	0			-	-	50	-	No discharge
	Oil & Grease	mg/L		0			-	-	10	-	No discharge
	pH	pH		0			-	-	6.5-8.5	-	No discharge
10	TSS	mg/L	Special Frequency 1*	0			-	-	50	-	No discharge
	Oil & Grease	mg/L		0			-	-	10	-	No discharge
	pH	pH		0			-	-	6.5-8.5	-	No discharge

\* Special Frequency 1 means the collection of samples as soon as practicable after each discharge commences and in any case not more than 12 hours after each discharge commences.

\*\* Special Frequency 2 means collection of samples quarterly (in the event of flow during the quarter) at a time when there is flow and as soon as practicable after each wet weather discharge from points 9 and 10 commences and in any case not more than 12 hours after each discharge commences.

**Figure 1 – EPL 12957 Monitoring Locations**





## SUNNYSIDE COAL MINE – MONTHLY MONITORING SUMMARY

### Site Information

**EPL No:** 12957

**EPA Website Link:** <http://epa.nsw.gov.au/prpoeoapp/ViewPOEOLicence.aspx?DOCID=40292&SYSUID=1&LICID=12957>

**Licensee:** Namoi Mining Pty Ltd

**Licensee Address:** Sunnyside Coal Project, 259 Coocooboona Lane, GUNNEDAH NSW 2380

**EPL Monitoring Points:** See Figure 1 below

**Sampling Period:** September 2020

**Obtained Date:** 19th October 2020

**Publication Date:** 23<sup>th</sup> October 2020

**Table 1 - No Pollutant Limits Apply**

EPL ID	Pollutant	Units of Measure	Monitoring Frequency	No. of Samples for the Month	Date(s) Sampled	Date(s) Obtained	Min Value	Mean Value	Median Value	Max or Only Value
1	Particulates-Deposited Matter	g/m <sup>2</sup> /month	Continuous	1	17/09/20	09/10/20	-	-	-	0.4
2	Particulates-Deposited Matter	g/m <sup>2</sup> /month	Continuous	1	17/09/20	09/10/20	-	-	-	0.9
4	Particulates-Deposited Matter	g/m <sup>2</sup> /month	Continuous	1	17/09/20	09/10/20	-	-	-	1.0
5	Particulates-Deposited Matter	g/m <sup>2</sup> /month	Continuous	1	17/09/20	09/10/20	-	-	-	5.2
6	Particulates-Deposited Matter	g/m <sup>2</sup> /month	Continuous	1	17/09/20	09/10/20	-	-	-	0.5
7	PM <sub>10</sub>	µg/m <sup>3</sup>	Every 6 days	5	Various	15/10/20	2.6	9.3	10.7	15.6
9	Conductivity	µS/cm	Special Frequency 1*	-	-	-	-	-	-	-
	Total organic carbon	mg/L					-	-	-	-
10	Conductivity	µS/cm	Special Frequency 1*	-	-	-	-	-	-	-
	Total organic carbon	mg/L					-	-	-	-
11	TSS	mg/L		-	-	-	-	-	-	-

## SUNNYSIDE COAL MINE – MONTHLY MONITORING SUMMARY

EPL ID	Pollutant	Units of Measure	Monitoring Frequency	No. of Samples for the Month	Date(s) Sampled	Date(s) Obtained	Min Value	Mean Value	Median Value	Max or Only Value
	Conductivity	µS/cm	Special Frequency 2**	-			-	-	-	-
	Oil & Grease	mg/L		-			-	-		
	pH	pH		-			-	-		
	Total organic carbon	mg/L		-			-	-		
12	TSS	mg/L	Special Frequency 2**	-	-	-	-	-	-	-
	Conductivity	µS/cm		-			-	-		
	Oil & Grease	mg/L		-			-	-		
	pH	pH		-			-	-		
	Total organic carbon	mg/L		-			-	-		

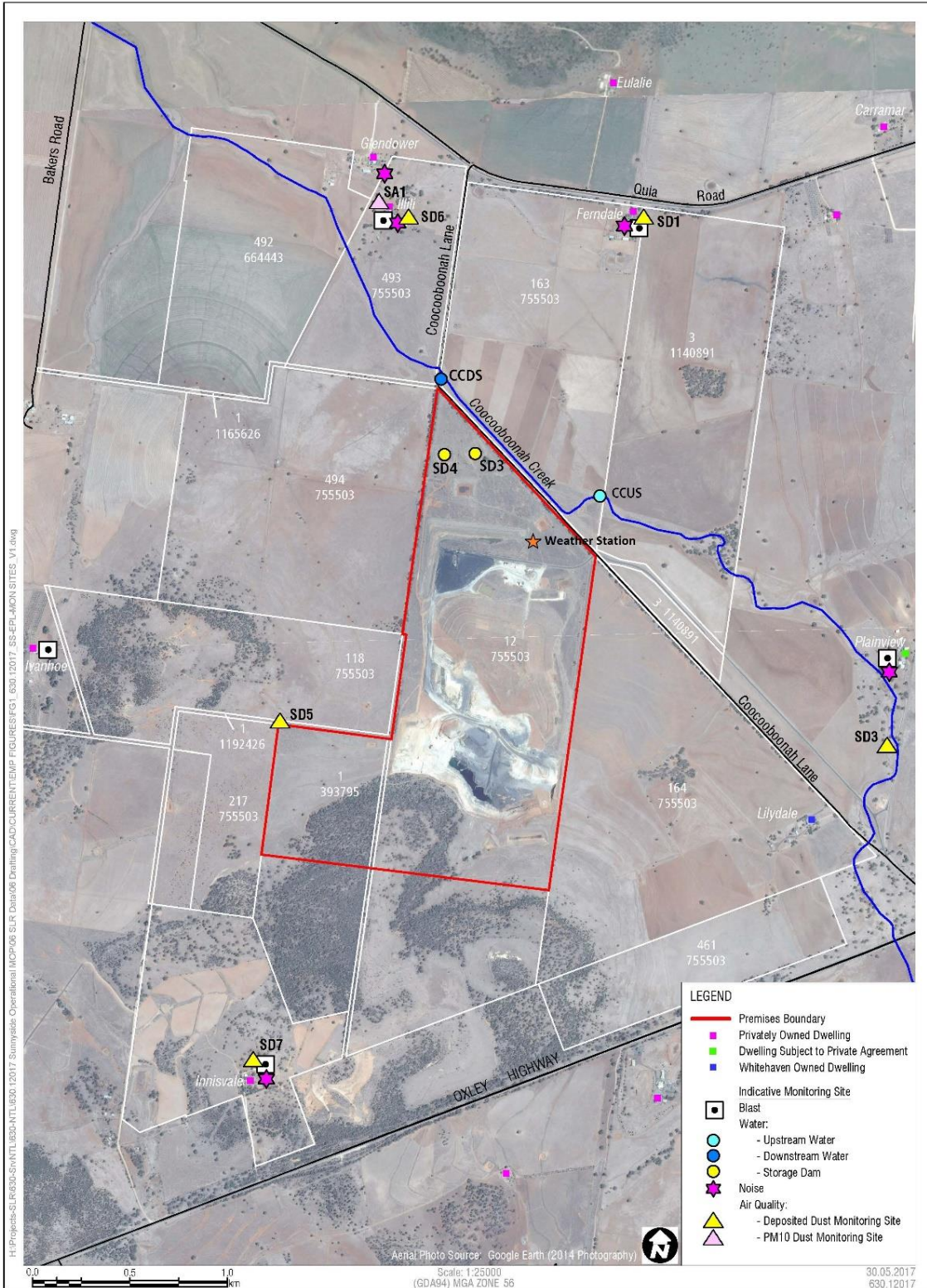
**Table 2 - Pollutant Limits Apply**

EPL ID	Pollutant	Units of Measure	Monitoring Frequency	No. of Samples for the Month	Date Sampled	Date Obtained	Min Value	Max Value	100%ile Limit	Exceedance (Yes/No)	Comments
9	TSS	mg/L	Special Frequency 1*	0	-	-	-	-	50	-	No discharge
	Oil & Grease	mg/L		0			-	-	10	-	No discharge
	pH	pH		0			-	-	6.5-8.5	-	No discharge
10	TSS	mg/L	Special Frequency 1*	0	-	-	-	-	50	-	No discharge
	Oil & Grease	mg/L		0			-	-	10	-	No discharge
	pH	pH		0			-	-	6.5-8.5	-	No discharge

\* Special Frequency 1 means the collection of samples as soon as practicable after each discharge commences and in any case not more than 12 hours after each discharge commences.

\*\* Special Frequency 2 means collection of samples quarterly (in the event of flow during the quarter) at a time when there is flow and as soon as practicable after each wet weather discharge from points 9 and 10 commences and in any case not more than 12 hours after each discharge commences.

**Figure 1 – EPL 12957 Monitoring Locations**



## SUNNYSIDE COAL MINE – MONTHLY MONITORING SUMMARY

### Site Information

**EPL No:** 12957

**EPA Website Link:** <http://epa.nsw.gov.au/prpoeoapp/ViewPOEOLicence.aspx?DOCID=40292&SYSUID=1&LICID=12957>

**Licensee:** Namoi Mining Pty Ltd

**Licensee Address:** Sunnyside Coal Project, 259 Coocooboona Lane, GUNNEDAH NSW 2380

**EPL Monitoring Points:** See Figure 1 below

**Sampling Period:** November 2020

**Obtained Date:** 11 December 2020

**Publication Date:** 15<sup>th</sup> November 2020

**Table 1 - No Pollutant Limits Apply**

EPL ID	Pollutant	Units of Measure	Monitoring Frequency	No. of Samples for the Month	Date(s) Sampled	Date(s) Obtained	Min Value	Mean Value	Median Value	Max or Only Value
1	Particulates-Deposited Matter	g/m <sup>2</sup> /month	Continuous	1	18/11/20	30/11/20	-	-	-	1.6
2	Particulates-Deposited Matter	g/m <sup>2</sup> /month	Continuous	1	18/11/20	30/11/20	-	-	-	1.8
4	Particulates-Deposited Matter	g/m <sup>2</sup> /month	Continuous	1	18/11/20	30/11/20	-	-	-	1.3
5	Particulates-Deposited Matter	g/m <sup>2</sup> /month	Continuous	1	18/11/20	30/11/20	-	-	-	1.8
6	Particulates-Deposited Matter	g/m <sup>2</sup> /month	Continuous	1	18/11/20	30/11/20	-	-	-	1.6
7	PM <sub>10</sub>	µg/m <sup>3</sup>	Every 6 days	5	Various	11/12/20	10.3	19.5	19.9	25.5
9	Conductivity	µS/cm	Special Frequency 1*	-	-	-	-	-	-	-
	Total organic carbon	mg/L					-	-	-	-
10	Conductivity	µS/cm	Special Frequency 1*	-	-	-	-	-	-	-
	Total organic carbon	mg/L					-	-	-	-
11	TSS	mg/L		-	-	-	-	-	-	-





## SUNNYSIDE COAL MINE – MONTHLY MONITORING SUMMARY

EPL ID	Pollutant	Units of Measure	Monitoring Frequency	No. of Samples for the Month	Date(s) Sampled	Date(s) Obtained	Min Value	Mean Value	Median Value	Max or Only Value
	Conductivity	µS/cm	Special Frequency 2**	-			-	-	-	-
	Oil & Grease	mg/L		-			-	-	-	
	pH	pH		-			-	-	-	
	Total organic carbon	mg/L		-			-	-	-	
12	TSS	mg/L	Special Frequency 2**	-			-	-	-	-
	Conductivity	µS/cm		-			-	-	-	
	Oil & Grease	mg/L		-			-	-	-	
	pH	pH		-			-	-	-	
	Total organic carbon	mg/L		-			-	-	-	

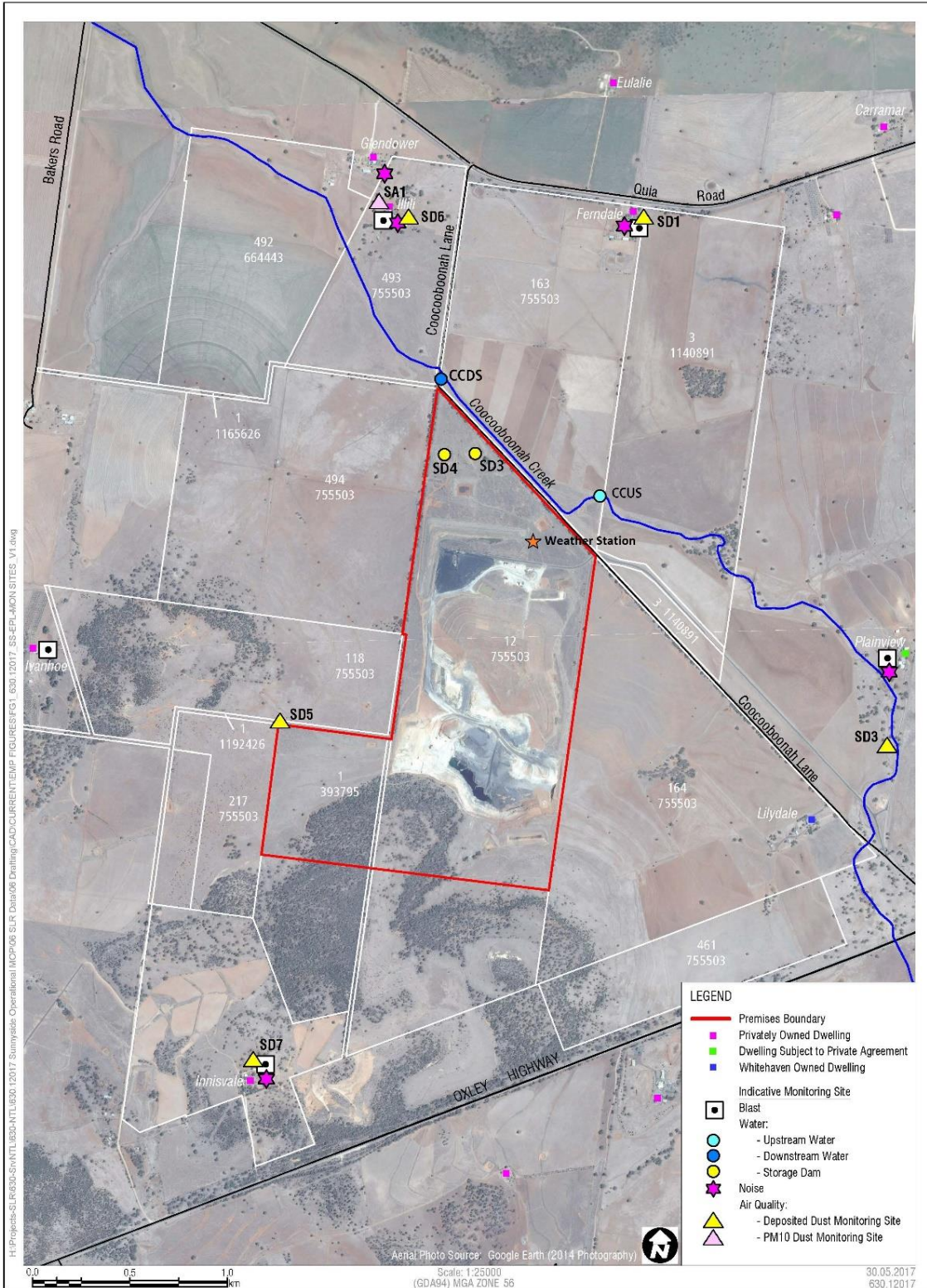
**Table 2 - Pollutant Limits Apply**

EPL ID	Pollutant	Units of Measure	Monitoring Frequency	No. of Samples for the Month	Date Sampled	Date Obtained	Min Value	Max Value	100%ile Limit	Exceedance (Yes/No)	Comments
9	TSS	mg/L	Special Frequency 1*	0			-	-	50	-	No discharge
	Oil & Grease	mg/L		0			-	-	10	-	No discharge
	pH	pH		0			-	-	6.5-8.5	-	No discharge
10	TSS	mg/L	Special Frequency 1*	0			-	-	50	-	No discharge
	Oil & Grease	mg/L		0			-	-	10	-	No discharge
	pH	pH		0			-	-	6.5-8.5	-	No discharge

\* Special Frequency 1 means the collection of samples as soon as practicable after each discharge commences and in any case not more than 12 hours after each discharge commences.

\*\* Special Frequency 2 means collection of samples quarterly (in the event of flow during the quarter) at a time when there is flow and as soon as practicable after each wet weather discharge from points 9 and 10 commences and in any case not more than 12 hours after each discharge commences.

**Figure 1 – EPL 12957 Monitoring Locations**



## SUNNYSIDE COAL MINE – MONTHLY MONITORING SUMMARY

### Site Information

EPL No: 12957

EPA Website Link: <http://epa.nsw.gov.au/prpoeoapp/ViewPOEOLicence.aspx?DOCID=40292&SYSUID=1&LICID=12957>

Licensee: Namoi Mining Pty Ltd

Licensee Address: Sunnyside Coal Project, 259 Coocooboona Lane, GUNNEDAH NSW 2380

EPL Monitoring Points: See Figure 1 below

Sampling Period: December 2020

Obtained Date: 05 January 2021

Publication Date: 20<sup>th</sup> January 2021

Table 1 - No Pollutant Limits Apply

EPL ID	Pollutant	Units of Measure	Monitoring Frequency	No. of Samples for the Month	Date(s) Sampled	Date(s) Obtained	Min Value	Mean Value	Median Value	Max or Only Value
1	Particulates-Deposited Matter	g/m <sup>2</sup> /month	Continuous	1	17/12/20	05/01/21	-	-	-	1.38
2	Particulates-Deposited Matter	g/m <sup>2</sup> /month	Continuous	1	17/12/20	05/01/21	-	-	-	2.47
4	Particulates-Deposited Matter	g/m <sup>2</sup> /month	Continuous	1	17/12/20	05/01/21	-	-	-	8.17
5	Particulates-Deposited Matter	g/m <sup>2</sup> /month	Continuous	1	17/12/20	05/01/21	-	-	-	0.88
6	Particulates-Deposited Matter	g/m <sup>2</sup> /month	Continuous	1	17/12/20	05/01/21	-	-	-	1.61
7	PM <sub>10</sub>	µg/m <sup>3</sup>	Every 6 days	5	Various	05/01/21	1.9	9.6	7.4	21.5
9	Conductivity	µS/cm	Special Frequency 1*	-	-	-	-	-	-	-
	Total organic carbon	mg/L					-	-	-	-
10	Conductivity	µS/cm	Special Frequency 1*	-	-	-	-	-	-	-
	Total organic carbon	mg/L					-	-	-	-
11	TSS	mg/L		-	-	-	-	-	-	-

## SUNNYSIDE COAL MINE – MONTHLY MONITORING SUMMARY

EPL ID	Pollutant	Units of Measure	Monitoring Frequency	No. of Samples for the Month	Date(s) Sampled	Date(s) Obtained	Min Value	Mean Value	Median Value	Max or Only Value
	Conductivity	µS/cm	Special Frequency 2**	-			-	-	-	-
	Oil & Grease	mg/L		-			-	-	-	
	pH	pH		-			-	-	-	
	Total organic carbon	mg/L		-			-	-	-	
12	TSS	mg/L	Special Frequency 2**	-	-	-	-	-	-	-
	Conductivity	µS/cm		-			-	-	-	
	Oil & Grease	mg/L		-			-	-	-	
	pH	pH		-			-	-	-	
	Total organic carbon	mg/L		-			-	-	-	

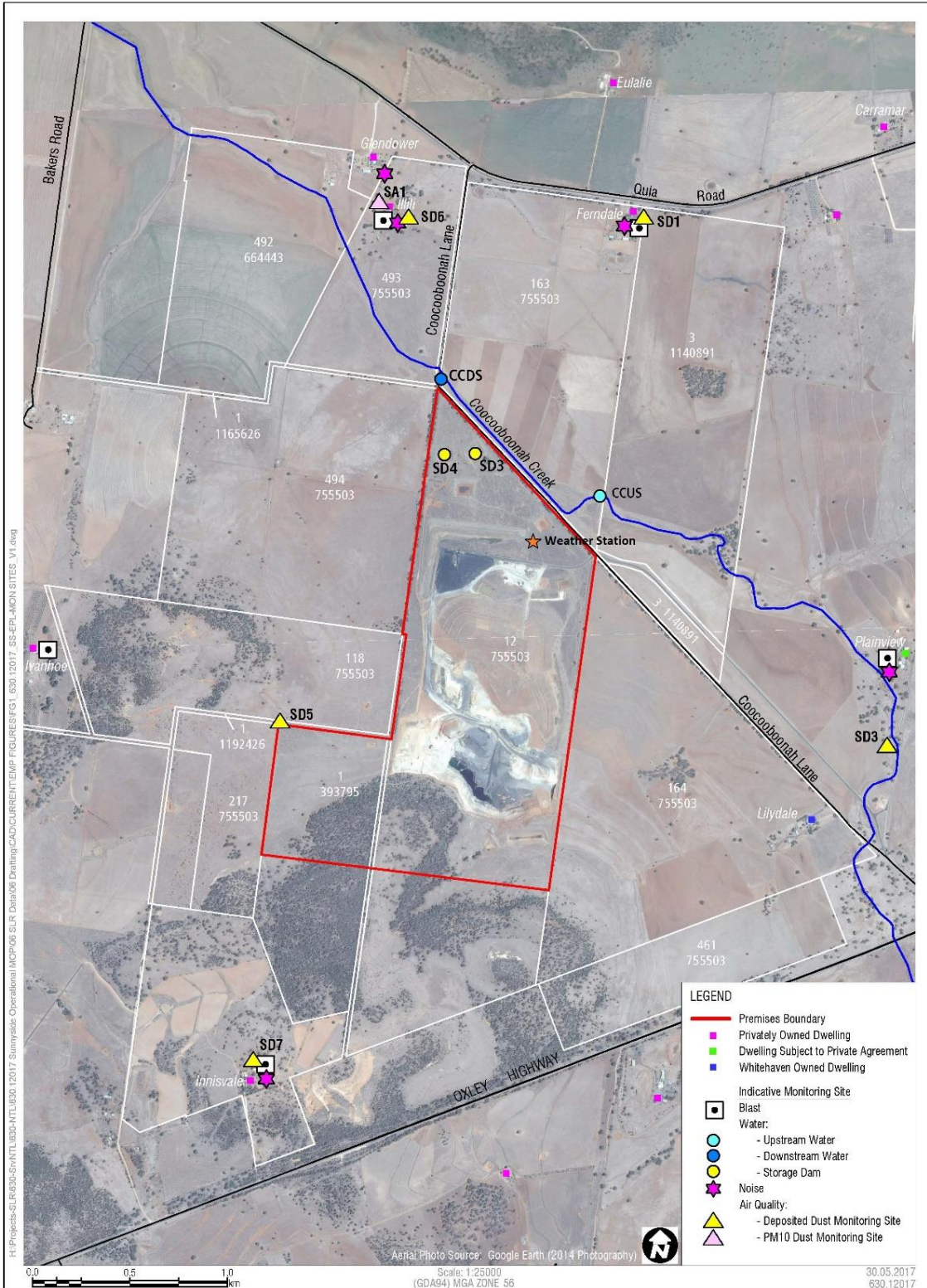
**Table 2 - Pollutant Limits Apply**

EPL ID	Pollutant	Units of Measure	Monitoring Frequency	No. of Samples for the Month	Date Sampled	Date Obtained	Min Value	Max Value	100%ile Limit	Exceedance (Yes/No)	Comments
9	TSS	mg/L	Special Frequency 1*	0	-	-	-	-	50	-	No discharge
	Oil & Grease	mg/L		0			-	-	10	-	No discharge
	pH	pH		0			-	-	6.5-8.5	-	No discharge
10	TSS	mg/L	Special Frequency 1*	0	-	-	-	-	50	-	No discharge
	Oil & Grease	mg/L		0			-	-	10	-	No discharge
	pH	pH		0			-	-	6.5-8.5	-	No discharge

\* Special Frequency 1 means the collection of samples as soon as practicable after each discharge commences and in any case not more than 12 hours after each discharge commences.

\*\* Special Frequency 2 means collection of samples quarterly (in the event of flow during the quarter) at a time when there is flow and as soon as practicable after each wet weather discharge from points 9 and 10 commences and in any case not more than 12 hours after each discharge commences.

Figure 1 – EPL 12957 Monitoring Locations





EPL MONTHLY MONITORING REPORTS  
2020 CORRECTION LOG

Month of EPL Report	Date of Original Publishing	Date of Correction	Date of Republishing	Correction/s made
January 2020	28/02/2020	1/09/2022	1/09/2022	<ul style="list-style-type: none"> <li>• Changed No. of Samples for the Month value in Table 1 for EPL ID 9 (original data: 1 corrected data: 0)</li> <li>• Changed Max or Only Value in Table 1 for EPL ID 6 (original data: 2.3 corrected data: 4.9).</li> </ul>
May 2020	20/06/2020	1/09/2022	1/09/2022	<ul style="list-style-type: none"> <li>• Changed date(s) sampled value in Table 1 for EPL ID 1,2,4,5 and 6 (original data: 17/04/20 corrected data: 19/05/2020)</li> <li>• Changed date(s) obtained value in Table 1 for EPL ID 1,2,4,5 and 6 (original data: 27/04/20 corrected data: 27/05/2020)</li> <li>• Changed date(s) obtained value in Table 1 for EPL ID 7 (original data: 14/05/20 corrected data: 14/06/2020)</li> <li>• Changed Max or only value in Table 1 for EPL ID 1 (original data: 2.2 corrected data: 2.4)</li> </ul>
June 2020	17/07/2020	2/09/2022	2/09/2022	<ul style="list-style-type: none"> <li>• Changed date(s) sampled value in Table 1 for EPL ID 1,2,4 and 5 (original data: 17/04/20 corrected data: 18/06/2020)</li> <li>• Changed date(s) sampled value in Table 1 for EPL ID 6 (original data: 17/04/20 corrected data: 17/06/2020)</li> <li>• Changed date(s) obtained value in Table 1 for EPL ID 1,2,4,5 and 6 (original data: 27/04/20 corrected data: 27/06/2020)</li> <li>• Changed date(s) obtained value in Table 1 for EPL ID 7 (original data: 14/05/2020 corrected data: 14/07/2020)</li> </ul>
July 2020	20/08/2020	2/09/2022	2/09/2022	<ul style="list-style-type: none"> <li>• Changed Obtained Date (original data: 18<sup>th</sup> July 2020, corrected data: 18<sup>th</sup> August 2020)</li> <li>• Changed Publication Date (original data: 20<sup>th</sup> July 2020, corrected data: 20<sup>th</sup> August 2020)</li> <li>• Changed date(s) sampled value in Table 1 for EPL ID 1,2,4,5 and 6 (original data: 17/06/20 corrected data: 17/07/2020)</li> </ul>



EPL MONTHLY MONITORING REPORTS  
**2020 CORRECTION LOG**

				<ul style="list-style-type: none"><li>• Changed date(s) obtained value in Table 1 for EPL ID 1,2,4,5 and 6 (original data: 22/07/20 corrected data: 29/07/2020)</li><li>• Changed Max or Only Value in Table 1 for EPL ID 5 (original data: 0.3, corrected data: 0.4)</li><li>• Changed No. of samples for the month in Table 1 for EPL ID 7 (original data: 5, corrected data: 6)</li><li>• Changed min value in Table 1 for EPL ID 7 (original data: 0.1, corrected data: 0.05)</li><li>• Changed max value in Table 1 for EPL ID 7 (original data: 6.5, corrected data: 5.4)</li></ul>
--	--	--	--	---