

**)Whitehaven Vickery Extension Project
Community Consultative Committee**

Date: 9 November 2023, 12 pm – 12:45pm

Location: Whitehaven Gunnedah Office Boardroom and Zoom

Attendees	
Community Members Grant McIlveen (GM) Community Representative Cr Colleen Fuller (CF) - Gunnedah Shire Council	Whitehaven Coal Megan Martin (MM) - Whitehaven Coal Jabin De Keizer (JDK) - Whitehaven Coal Darren Swain (DSw) - Whitehaven Coal Tony Dwyer (TD) - Whitehaven Coal Matt Sparkes (MS) - Whitehaven Coal Dean Scott (DS) -Whitehaven Coal
Gunnedah Shire Council Wade Hudson (WH) - Gunnedah Shire Council Cr Rob Hooke (RH) – Gunnedah Shire Council Zac Thompkin (ZT) – Gunnedah Shire Council	Independent Chairperson Professor Roberta Ryan (RR) Minute taker Isa Crossland Stone (ICS)
Apologies Donna Ausling (DA) - Narrabri Shire Council Michelle Henry (MH) - Narrabri Shire Council Cr Cathy Redding (CR) - Narrabri Shire Council Cr Darrell Tiemens (DT) - Narrabri Shire Council Ron Fuller (RF) Community Representative Barry Thompson (BT) – Community Representative Keith Blanch (KB) - Community Representative	

Item	Description	Action
1	Welcome and introductions	
	<p>RR introduces herself and welcomes the attendees to the last Whitehaven Vickery CCC meeting of 2023.</p> <p>RR notes that all representatives from Narrabri Shire Council are apologies today.</p>	
2	Confirmation of previous minutes	
	CF and GM endorse the previous minutes.	
3	Declaration of Interests - RR	
	There are no declarations to be made today.	
4	Introductions to the new Vickery team	
	<p>DS says that as the Vickery Project is now entering the operations phase, Whitehaven presence at these meetings will shift accordingly.</p> <p>He introduces MS, TD and DS to the group.</p> <p>TD will only attend periodically to provide further detail on Approvals.</p> <p>DS is General Manager Open Cuts including Vickery.</p> <p>MS is Operations Manager for Vickery.</p>	
4	Actions arising from previous minutes - RR	
	<p>1. DS to report to the CCC on Whitehaven's plans to develop an alternative route on Braymont Road</p> <p>TD says that the company made an application to close this section of Braymont Road. The application was exhibited by the council, and Whitehaven has responded to community submissions on the application.</p> <p>TD says that there is an outstanding objection from Local Land Services, who would like some more detail on the TSLR route being proposed by the company to replace the current road alignment.</p> <p>At this stage, the TSR road is yet to be determined. DSw will update on this project at future meetings.</p>	<p>DSw to provide an update on the TSR at Braymont Road at future meetings.</p>

	<p>2. DA to present the Narrabri Council zoning plans</p> <p>Since DA is an apology along with the other Narrabri Shire Council members, this item will be carried forward to a future meeting.</p> <p>3. MM to give a brief overview of the Whitehaven management plan:</p> <p>MM says that the Whitehaven Vickery bushfire management plan was written in a broad way, so they have now started to refine the plan, including deciding on asset protection zones on their block. They have cleared a fire break on the ML boundary.</p> <p>4. RR to follow up with Narrabri council about funds of \$800k previously committed to the Glentarkie aged care facility.</p> <p>RR did contact Narrabri Council and has shared the correspondence with this CCC.</p> <p>GM says that he heard from the Council the week following last meeting and missed that call, but since following up again he has not been able to reach the appropriate people at Narrabri.</p> <p>GM says that the Council representatives guaranteed that that \$800k would be contributed to the building Unit 1 at Glentarkie facility on May 11, 2022. The Glentarkie management was very happy with this agreement.</p> <p>GM says that the DPE made the Narrabri take back the \$3.2 million VPA funds that were planned to be contributed. Because they did not take up the money within the first 6 months of being offered, the funds went to the Council and seem to have been redirected.</p> <p>WH explains that then the timing was exhausted by Gunnedah Council, a different condition of approval came into play. The DPE gave the opportunity for both Councils to have discussions with Whitehaven within a 6 month time frame. When this period expired, it became a condition of consent rather than an agreement between the Vickery Project and the councils.</p> <p>GM says this is correct, however, the people of Boggabri decided that they wanted to direct the funds to the Glentarkie facility, yet the Council has not followed through.</p>	<p>RR to follow up again with Narrabri Council regarding their previous commitment of \$800,000 to the Glentarkie aged care home.</p> <p>RR to follow up with Narrabri</p>
--	--	--

	<p>GM adds that it is disappointing that the Narrabri Council has been absent at this meeting others. They are not representing their community in the way that they should.</p> <p>RR thanks GM and says that she will take this up with the Narrabri Shire Council.</p> <p>WH asks whether this allocation of funds was stated as a formal resolution in the condition of consent?</p> <p>GM says no, it was just discussed in the EIS and guaranteed in these meetings.</p> <p>RR says not really, she can just write etc.</p> <p>GM asks what the CCC can do to press the DPE.</p> <p>RR says that she can simply write and ask questions, but not do anything more active.</p> <p>GM asks what Whitehaven can do, given they contributed the money initially.</p> <p>RR says that it is unlikely they can do anything, given the Council has followed a process and the matter has fallen to a new clause following the 6-month timeframe.</p> <p>DS agrees. He says Whitehaven's hands are likely tied here, as are likely Narrabri Council's, by the DPE's process for this fund allocation.</p>	Shire Council regarding their presence at these meetings.
5	Canyon and Vickery Environmental Report – MM and TD	
	<p>MM and TD present the Environmental report, which is attached to these minutes.</p> <p>MM clarifies the following terminology:</p> <ul style="list-style-type: none"> - 'EPL' means environmental protection license. - 'MLA' means mining lease application - 'TEOM' means tapered element oscillating microbalance. <p>RH asks where the three blast monitoring stations are located.</p> <p>MM that there is one between the mine and the Kurrumbede, another between the mine and the grinding grooves heritage site, and a third is at Lanreef on the Kamilaroi Highway</p> <p>DS asks if notifications have gone out to the community regarding the blast monitoring.</p> <p>MM says 4-5 notifications have gone out, as well as 2 emails.</p>	

	<p>CF says that it would be helpful for the Gunnedah Council to be on the blast notification register.</p> <p>GM asks why the rail MLA (submitted in July) was not part of the initial Vickery train line plans.</p> <p>TD says that MLA covers the rail corridor. The process that Whitehaven went through with the DPE was under the Environmental Planning and Assessment Act, which granted primary approval. Beyond this, there are secondary approvals including the MLA which Whitehaven is working through this currently.</p> <p>WH asks about the road realignment. Is there more vegetation removal required due to the new realignment position?</p> <p>TD says that there will be less removal required at this location. The distance of the diversion will be less.</p> <p>GM asks if this mean that they will not be mining as far.</p> <p>TD says no, the extent of mining will not be different.</p>	
--	--	--

6	Operations Update - MS	
	<p>MS presents an operations update on behalf of Whitehaven. DSw's presentation slides are attached to these minutes.</p> <p>RH asks about the average depth of the topsoil being removed.</p> <p>MS says it is generally approximately 100mm deep, depending on the quality and the plants specific to that area.</p> <p>MM says that there is quite a range. A lot of the topsoil that has been removed is only about 10-15cm, and it is a tricky job to ensure that is not contaminated with the layers underneath.</p> <p>DS clarifies that the incident (noted in the slides) was actually not on-site, but adjacent to the site.</p> <p>An LV turned on its side while driving through a paddock near (but NOT on) Vickery's active mine site area. No injuries were sustained.</p> <p>A drover came off his horse and sustained injuries and</p>	

	first aid was administered by Whitehaven personnel on site at Vickery. This incident occurred near the TSR and also happened outside of any active mining area.	
7	Community Update - DSw	
	<p>DSw's community update, including a summary of complaints, is included in the attached presentation by Vickery.</p> <p>RH asks how long the Little Wings project (discussed in DSw's presentation) has been running.</p> <p>DSw says it was established in 2012. All vehicles (cars, planes, etc) are sponsored, and all pilots, drivers and doctors are volunteers.</p>	
	Next Steps – DS	
	<p>DS discusses the next steps of the operation phase of the Whitehaven Vickery.</p> <p>On 27 November, there is scheduled to be a desktop audit on emergency responses. On 11 December, there will be further engagement with emergency services.</p> <p>DS says that next week, a new excavator will be in operation. Shortly afterward in the first week December, another larger excavator will begin operating.</p> <p>DS adds that there are lots on new staff onboarding in the coming months, and there is a strong focus on safety (particularly road safety).</p> <p>DS says that the priority hiring local people. 87 of the 108 new employees are local residents.</p> <p>GM asks if the roster is roster 7x7? DS says that the majority of staff will be 5x2 but all of Production workforce will be 7x7.</p> <p>GM says that In May and June of 2024, there will be scheduled coal mining.</p> <p>DS says that there are stringent fatigue guidelines and fatigue monitoring, as the safety both of the workers and the surrounding community (particularly road safety) is a key priority.</p> <p>Those employees who live within a 50km radius are allowed to remain at their residences, and those living outside of 50km radius, are required to move to Whitehaven's CIVEO camp accommodation.</p>	

	<p>There will be a cultural expectations event every week, and the fatigue monitoring app, mentioned by DS w in his earlier presentation, includes an Operating alert system (OAS) to monitor eye movement as a measure of fatigue. The OAS will alert the team pf any workers who are unfit to work on this basis, and those workers will be driven home to rest.</p> <p>DS adds that there is good feedback on these strict standards across Vickery.</p> <p>RH asks about the housing projects at Whitehaven.</p> <p>DS w says that the project at George Street (which is 16 blocks) is close to completion. There was a hold-up with one of the electricity suppliers in that area.</p> <p>DS w adds that they are planning to establish a couple of houses next year and will likely start to sell some of the Whitehaven blocks to employees first and then to the community.</p> <p>RH asks about the works at Forest Lane, but DS w does not know about this area.</p> <p>RH asks DS w to organise a briefing on the Whitehaven housing development plans for the next CCC meeting.</p> <p>WH adds that the Gunnedah Council has been discussing 3 other sites with Whitehaven that may be able to house a number of new residential developments.</p> <p>RR would like to hear more on this at the next CCC meeting.</p>	<p>Whitehaven is to present to the CCC on housing development plans including and surrounding the George Street properties.</p>
	General Business - RR	
	<p>RR invites attendees to ask any questions or share comments.</p> <p>CF thanks Whitehaven for its provision of grant funding. She says that it has benefitted many specific organisations across the region that would otherwise not have received such support. As a result, she says that it has benefitted the community broadly.</p>	
	Next Meeting - RR	
	RR asked the group for suggestions about meeting timing.	RR to be in contact with the Narrabri Council representatives

	<p>The group suggests early February. Thursdays remain a good day of the week for everyone present, and RR will follow up with the Narrabri Council to ensure confirm that Thursdays are suitable for them, too.</p> <p>ICS will send a calendar hold.</p> <p>RR thanks the attendees for their presence at the meeting. She wishes them well.</p>	<p>regarding the suitability of Thursday meetings.</p> <p>ICS to schedule the next CCC meeting for Thursday, November 9 at 12pm.</p>
--	--	--

Vickery CCC Q4 2023

Megan Martin- Environmental
Superintendent
9th November 2023

Agenda

Overview and Update

Monitoring Results

Complaints

Approvals

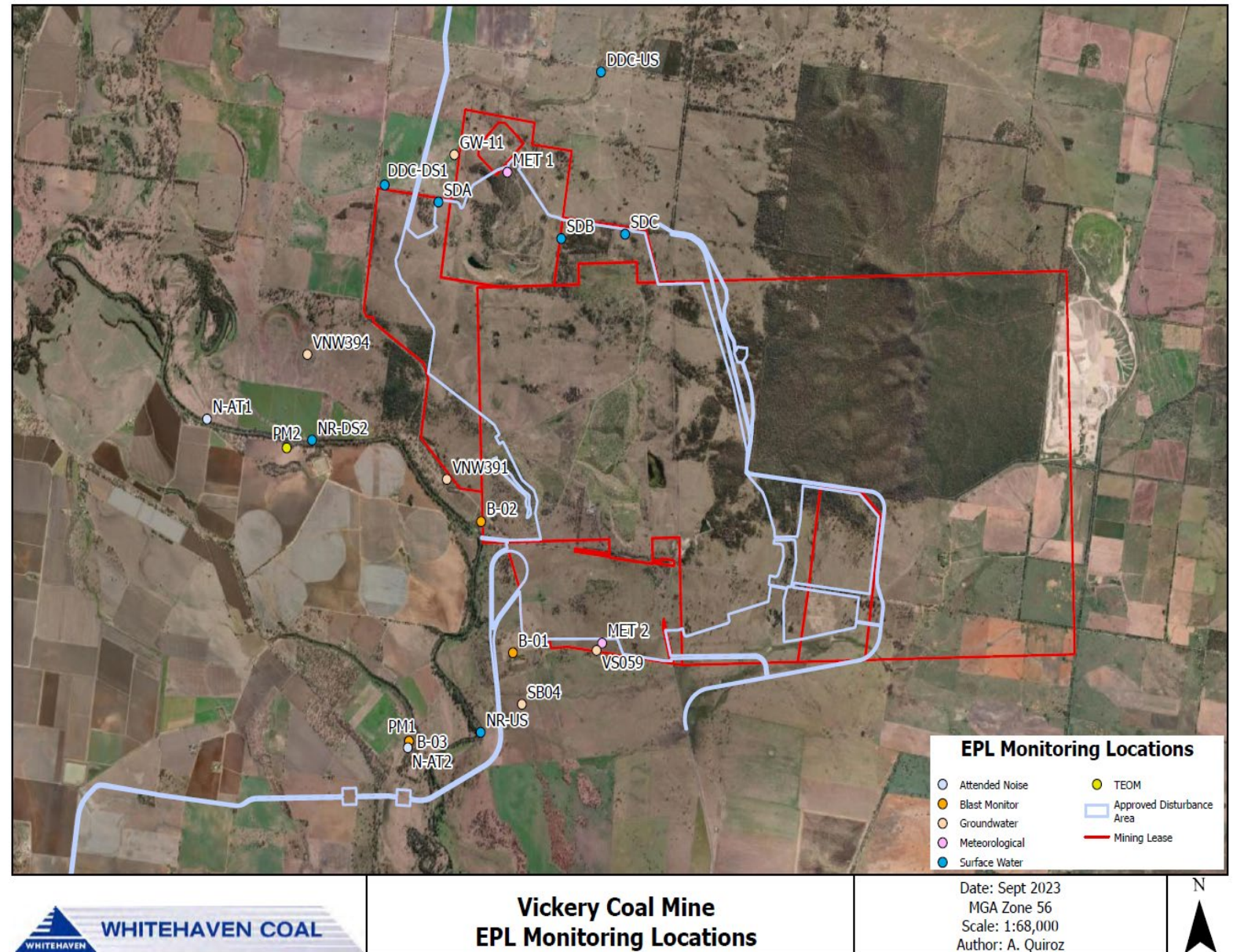
Management Plans

Noise Monitoring

Attended Noise Monitoring

Attended noise monitoring was conducted at “Lanreef” (N-AT2) and “Broadwater” (N-AT1) properties once a month during this reporting period. Noise criteria for the mine is 40dB(A) Leq (15 min) during day time and 35dB(A) Leq (15 min) during evening/night time.

Results below show that noise emissions from the mine did not exceed operational criteria at “Lanreef” or “Broadwater” monitoring locations during the monitoring period.



Dust Monitoring

Real time monitoring- TEOMs

- Tapered Element Oscillating Microbalance (TEOM)
- Measure PM_{2.5} and PM₁₀ sized dust particles
- A real time air quality unit, PM1 is located at the “Lanreef” property and PM2 at the “Mirrabinda” property to monitor PM2.5 and PM10 levels in ambient air, as per the current Air Quality and Greenhouse gas Management Plan (AQGMP)
- This is an operational management tool and dust levels nearing or reaching the nominated criteria will trigger actions onsite to assess the source of dust and modify operations if it is determined to be related to Vickery operations. We call this our ‘Dust TARP’ and it is enacted by the Supervisor of mining operations in response to a text or email alert received well in advance of any significant dust impacts



TEOM installed at ‘Lanreef’-
PM1

Water Monitoring

Groundwater Monitoring

Routine groundwater monitoring has been conducted 6 monthly since 2021

The Water MP was approved in August and has triggered quarterly groundwater monitoring to begin

In October 2023, Hydra-sleeve monitoring was introduced to Vickery's groundwater bores. Results will be shared in the next quarterly report

Surfacewater Monitoring

Water storage onsite is expected to be sufficient for at least 12 months. VCM has not undertaken any discharges during the period.

Results are shown in the accompanying monitoring summary report.

Surface water quality in the Namoi is stable and does not differ between upstream and downstream monitoring sites.

Rainfall Total

Rainfall	May	June	July	August	September	October
Monthly total (mm)	3.4	24.4	11	1.6	6.6	25
Cumulative total (mm)	3.4	27.8	38.8	40.4	47	72

Blast Monitoring

Blasting Notification Register

Blasting will begin at Vickery towards the end of December/beginning of 2024

Monitoring equipment has been installed and there are three blast monitors measuring vibrations and overpressure

As part of pre-blast preparations the blasts will be registered on our website to allow community notification.

In addition an SMS or email can be sent to residents that wish to be notified of upcoming blast events.



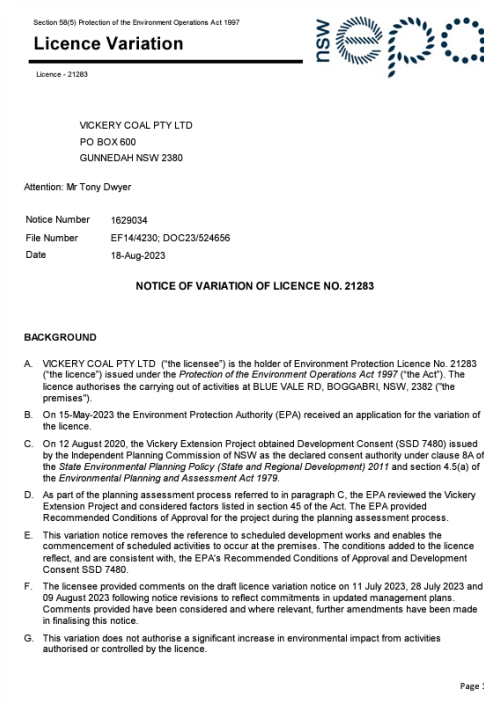
Complaints/Approvals/Management Plans

Complaints

- One complaint received during the reporting period.
- A noise monitoring contractor entered the wrong property in August while investigating our attended noise monitoring sites. A follow up call was made to the landholder.
- Attended noise monitoring sites have been established (note no infrastructure is required) at Broadwater (NAT1) and Lanreef (NAT2) and EPL monitoring was conducted in September and October. A third monitoring site (NAT3) will not be required until construction for the rail line begins.

Approvals

- The Environmental Protection Licence (EPL) Variation was received on the 18th August.



Environmental Management Plans

- The Water Management Plan was updated and approved by the DPE.
- The Social Impact Management Plan was approved by the DPE.
- The Blast Management Plan will be updated to include a Road Closure Protocol.
- The Noise Management Plan will be updated to reflect the amended monitoring locations
- The Traffic Management Plan will be updated to include amended haulage hours following Tarrawonga Coal Mine's approval of MOD8 to MP11_0047.
- Other management plans may be updated with administrative amendments to reflect the early mining project scope

Thank you

www.whitehavencoal.com.au