

21 July 2021

MEREENIE DEVELOPMENT WELL WM28 COMMENCES

Central Petroleum Limited (**ASX:CTP**) (“**Central**” or “**Company**”) advises that WM28, the second Development well in the Mereenie Development Programme, was spudded on 21 July 2021 at 03:30hrs.

Prior to spudding WM28, WM27 was successfully drilled and cased across the upper reservoir (Pacoota-1) with the shoe at 1,286 metres. The well was then drilled ahead with air to 1,367m to the lower reservoir (Pacoota-3). The well has been temporarily suspended pending the procurement of equipment to execute a mud-drilled sidetrack from the existing wellbore to better assess the Pacoota-3 potential. The rig is intended to return to WM27 for further drilling and completion of the Pacoota-3 sidetrack following completion of WM28.

WM28 is also being drilled at a crestal location targeting increased gas production, with the drilling program adjusted to capture learnings from WM27. This well, along with the WM27 development well and the four recompletions (WM14, WM15, WM19 and WM20), are intended to increase field capacity to support marketing gas into what is anticipated to be an increasingly tight east coast gas market.

Further updates will be provided as the programme progresses.

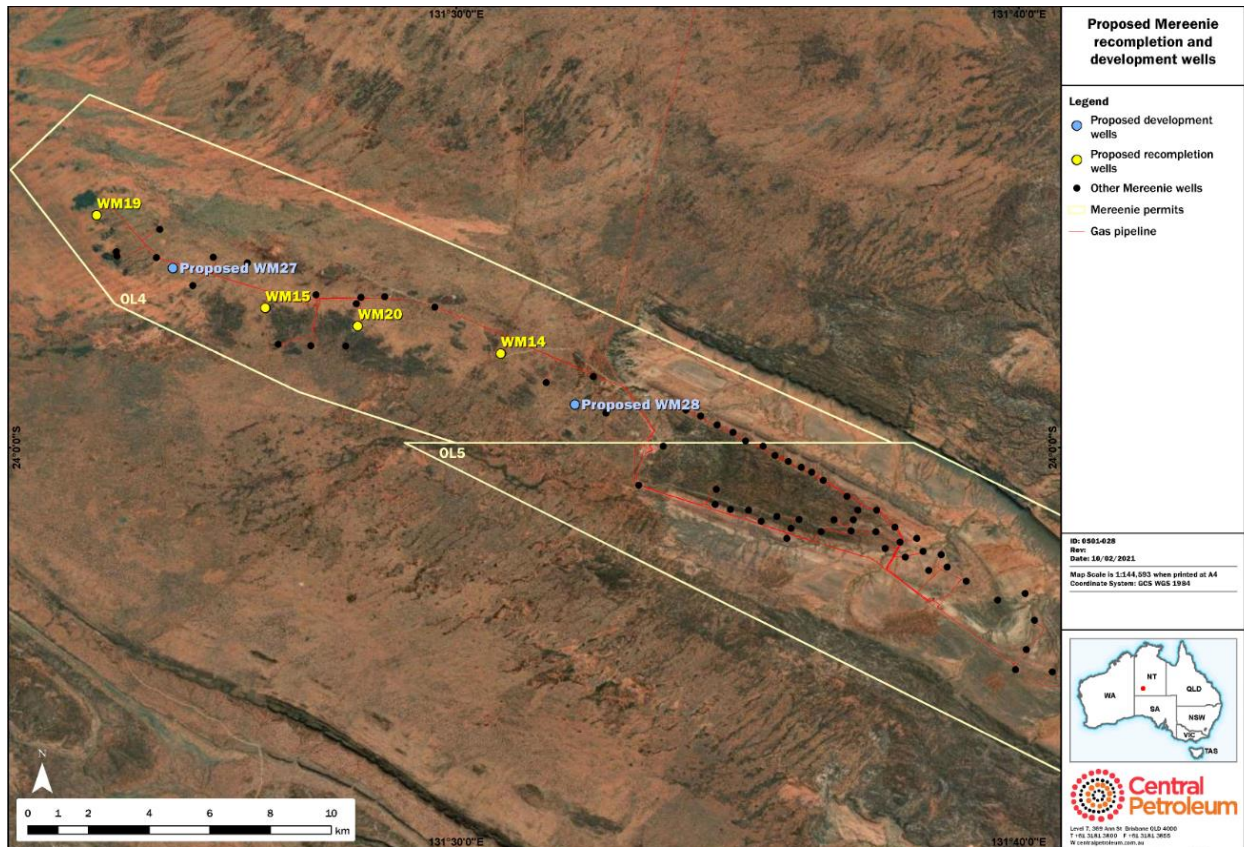


Figure 1: Location of Mereenie recompletion and new development wells

For personal use only

-ends-

This ASX announcement was approved and authorised for release by Leon Devaney, Managing Director and Chief Executive Officer.

About Central Petroleum

Central Petroleum Limited (Central) is a well-established, and emerging ASX-listed Australian oil and gas producer (ASX: CTP). In our short history, Central has grown to become the largest onshore gas producer in the Northern Territory (NT), supplying industrial customers and senior gas distributors in NT and the wider Australian east coast market.

Central is positioned to become a significant domestic energy supplier, with exploration and development plans across 180,000 km² of tenements in Queensland and the Northern Territory, including some of Australia's largest known onshore conventional gas prospects. Central has also completed an MoU with Australian Gas Infrastructure Group (AGIG) to progress the proposed Amadeus to Moomba Gas Pipeline to a Final Investment Decision.

We are also seeking to develop the Range gas project, a new gas field located among proven CSG fields in the Surat Basin, Queensland with 135 PJ (net to Central) of development-pending 2C contingent resource.

General Legal Disclaimer and Explanation of Terms:

This document is for information purposes only and is not investment or financial product advice nor intended for prospective investors and does not purport to provide all of the information an interested party may require in order to investigate the affairs of Central Petroleum Limited ("Company"). This document has been prepared without taking into account the investment objectives, financial situation or particular needs of any particular person. The data, information, opinions and conclusions ("Information") herein are subject to change without notice.

No representation or warranty, express or implied, is made as to the fairness, accuracy, completeness, correctness, likelihood of achievement or reasonableness of the Information contained in this document. To the maximum extent permitted by law, none of the Company or its agents, directors, officers, employees, advisors and consultants, nor any other person, accepts any liability, including, without limitation, any liability arising out of fault or negligence for any loss arising from the use of the Information contained in this document.

This document may contain forward-looking statements which include (but are not limited to) forecasts, prospects or returns. Forward looking statements are only predictions and are subject to risks, uncertainties and assumptions which may be outside the control of the Company and could cause actual results to differ from these statements. These risks, uncertainties and assumptions include (but are not limited to) funding, exploration, commodity prices, currency fluctuations, economic and financial market conditions, environmental risks, legislative or fiscal developments, political risks, project delay, approvals, cost estimates and other risk factors described from time-to-time in the Company's filings with the ASX. Actual facts, matters or circumstances may be different to those expressed or implied in this document. Given these uncertainties, readers are cautioned not to place reliance on forward looking statements. Subject to any continuing obligations under applicable law and the ASX Listing Rules, the Company and its agents, directors, officers, employees, advisors and consultants, nor any other person, do not undertake any obligation to update or revise any Information or any of the forward looking statements in this document. Sentences and phrases are forward looking statements when they include any tense from present to future or similar inflection words, such as (but not limited to) "believe", "understand", "estimate", "anticipate", "plan", "predict", "target", "may", "hope", "can", "will", "should", "expect", "intend", "projects", "is designed to", "with the intent", "potential", the negative of these words or such other variations thereon or comparable terminology or similar expressions of the future which may indicate a forward looking statement or conditional verbs such as "will", "should", "would", "may", "can" and "could" are generally forward-looking in nature and not historical facts.

No right of the Company or its subsidiaries shall be waived arising out of this document. All rights are reserved.

For personal use only