



KEMENTERIAN EKONOMI
JABATAN PERANGKAAN MALAYSIA

INDEKS PERDAGANGAN LUAR NEGERI

EXTERNAL TRADE INDICES

MEI
MAY 2024



JABATAN PERANGKAAN MALAYSIA
DEPARTMENT OF STATISTICS MALAYSIA



KEMENTERIAN EKONOMI
JABATAN PERANGKAAN MALAYSIA

INDEKS PERDAGANGAN LUAR NEGERI *EXTERNAL TRADE INDICES* (2010=100)

MEI 2024
MAY 2024

Pemakluman

Jabatan Perangkaan Malaysia (DOSM) telah melancarkan OpenDOSM NextGen sebagai medium yang menyediakan katalog data dan visualisasi bagi memudahkan pengguna menganalisis pelbagai data dan boleh diakses melalui portal <https://open.dosm.gov.my>.

DOSM akan menjalankan Banci Pertanian pada tahun 2024. Sila layari <https://www.myagricensus.gov.my/> untuk maklumat lanjut. Tema adalah "Banci Pertanian, Kunci Kemajuan Pertanian."

Kerajaan Malaysia telah mengisytiharkan Hari Statistik Negara (MyStats Day) pada 20 Oktober setiap tahun. Tema sambutan MyStats Day adalah "Statistik Nadi Kehidupan". DOSM menyambut ulang tahun ke 75 Jubli Intan pada tahun 2024.

Announcement

The Department of Statistics Malaysia (DOSM) has launched OpenDOSM NextGen as a medium that provides a catalog of data and visualisations to facilitate users' analysis of various data and can be accessed through <https://open.dosm.gov.my>.

DOSM will conduct the Agricultural Census in 2024. Please visit <https://www.myagricensus.gov.my/> for more information. The theme is "Agriculture Census, Key to Agricultural Development."

The Government of Malaysia has declared National Statistics Day (MyStats Day) on October 20th each year. MyStats Day theme is "Statistics is the Essence of Life". DOSM commemorates its 75th Diamond Jubilee in 2024.

JABATAN PERANGKAAN MALAYSIA
DEPARTMENT OF STATISTICS MALAYSIA

Diterbitkan dan dicetak oleh / *Published and printed by:*

Jabatan Perangkaan Malaysia
Department of Statistics, Malaysia

Blok C6, Kompleks C,
Pusat Pentadbiran Kerajaan Persekutuan
62514 Putrajaya,

MALAYSIA

Tel. : 03-8885 7000
Faks : 03-8888 9248
Portal : <https://www.dosm.gov.my>
Facebook / X / Instagram: StatsMalaysia
E-mel / *E-mail* : info@dosm.gov.my (pertanyaan umum / *general enquiries*)
data@dosm.gov.my (pertanyaan & permintaan data / *data request & enquiries*)

Harga / *Price* : RM5.00

Diterbitkan pada Jun 2024 / *Published on June 2024*

Hakcipta terpelihara / *All rights reserved.*

Tiada bahagian daripada terbitan ini boleh diterbitkan semula, disimpan untuk pengeluaran atau ditukar dalam apa-apa bentuk atau alat apa jua pun kecuali setelah mendapat kebenaran daripada Jabatan Perangkaan Malaysia.

Pengguna yang mengeluarkan sebarang maklumat dari terbitan ini sama ada yang asal atau diolah semula hendaklah meletakkan kenyataan berikut:

“Sumber: Jabatan Perangkaan Malaysia”.

No part of this publication may be reproduced or distributed in any form or by any means or stored in data base without the prior written permission from Department of Statistics, Malaysia.

Users reproducing content of this publication with or without adaptation should quote the following:

“Source: Department of Statistics, Malaysia.”

ISSN 1675 - 4344

KANDUNGAN

Contents

| | <i>Muka Surat</i> <i>Page</i> |
|--|----------------------------------|
| Kata Pengantar <i>Preface</i> | i - ii |
| Ringkasan Penemuan <i>Summary of Findings</i> | iii - xv |
| Carta & Jadual Statistik <i>Statistical Tables & Charts</i> | |
| 1.1 Carta Indeks Nilai Seunit Eksport dan Import <i>Export and Import Unit Value Indices Charts</i> | 1 |
| 1.2 Carta Peratus Perubahan Bulan ke Bulan Indeks Nilai Seunit Eksport dan Import <i>Month-on-month Percentage Change in Export and Import Unit Value Indices Charts</i> | 1 |
| 1.3 Carta Peratus Perubahan Tahun ke Tahun Indeks Nilai Seunit Eksport dan Import <i>Year-on-year Percentage Change in Export and Import Unit Value Indices Charts</i> | 2 |
| 2.1 Carta Indeks Volum Eksport dan Import <i>Export and Import Volume Indices Charts</i> | 2 |
| 2.2 Carta Peratus Perubahan Bulan ke Bulan Indeks Volum Eksport dan Import <i>Month-on-month Percentage Change in Export and Import Volume Indices Charts</i> | 3 |
| 2.3 Carta Peratus Perubahan Tahun ke Tahun Indeks Volum Eksport dan Import <i>Year-on-year Percentage Change in Export and Import Volume Indices Charts</i> | 3 |
| 3.1 Carta Indeks Terma Perdagangan <i>Terms of Trade Index Charts</i> | 4 |
| 3.2 Carta Peratus Perubahan Bulan ke Bulan Indeks Terma Perdagangan <i>Month-on-month Percentage Change in Terms of Trade Index Charts</i> | 4 |
| 3.3 Carta Peratus Perubahan Tahun ke Tahun Indeks Terma Perdagangan <i>Year-on-year Percentage Change in Terms of Trade Index Charts</i> | 5 |
| 1A Jadual Indeks Nilai Seunit bagi Eksport (2010=100) Mengikut Seksyen Barangan (S.I.T.C.) <i>Export Unit Value Index (2010=100) by Commodity Sections (S.I.T.C.) Tables</i> | 6 |
| 1B Jadual Peratus Perubahan Bulan ke Bulan Indeks Nilai Seunit bagi Eksport (2010=100) Mengikut Seksyen Barangan (S.I.T.C.) <i>Month-on-month Percentage Change Export Unit Value Index (2010=100) by Commodity Sections (S.I.T.C.) Tables</i> | 7 |
| 1C Jadual Peratus Perubahan Tahun ke Tahun Indeks Nilai Seunit bagi Eksport (2010=100) Mengikut Seksyen Barangan (S.I.T.C.) <i>Year-on-year Percentage Change Export Unit Value Index (2010=100) by Commodity Sections (S.I.T.C.) Tables</i> | 8 |
| 2A Jadual Indeks Volum bagi Eksport (2010=100) Mengikut Seksyen Barangan (S.I.T.C.) <i>Export Volume Index (2010=100) by Commodity Sections (S.I.T.C.) Tables</i> | 9 |
| 2B Jadual Peratus Perubahan Bulan ke Bulan Indeks Volum bagi Eksport (2010=100) Mengikut Seksyen Barangan (S.I.T.C.) <i>Month-on-month Percentage Change Export Volume Index (2010=100) by Commodity Sections (S.I.T.C.) Tables</i> | 10 |

| | | |
|--|--|-------|
| 2C | Jadual Peratus Perubahan Tahun ke Tahun Indeks Volum bagi Eksport (2010=100) Mengikut Seksyen Barangan (S.I.T.C.) <i>Year-on-year Percentage Change Export Volume Index (2010=100) by Commodity Sections (S.I.T.C.) Tables</i> | 11 |
| 3A | Jadual Indeks Nilai Seunit bagi Import (2010=100) Mengikut Seksyen Barangan (S.I.T.C.) <i>Import Unit Value Index (2010=100) by Commodity Sections (S.I.T.C.) Tables</i> | 12 |
| 3B | Jadual Peratus Perubahan Bulan ke Bulan Indeks Nilai Seunit bagi Import (2010=100) Mengikut Seksyen Barangan (S.I.T.C.) <i>Month-on-month Percentage Change Import Unit Value Index (2010=100) by Commodity Sections (S.I.T.C.) Tables</i> | 13 |
| 3C | Jadual Peratus Perubahan Tahun ke Tahun Indeks Nilai Seunit bagi Import (2010=100) Mengikut Seksyen Barangan (S.I.T.C.) <i>Year-on-year Percentage Change Import Unit Value Index (2010=100) by Commodity Sections (S.I.T.C.) Tables</i> | 14 |
| 4A | Jadual Indeks Volum bagi Import (2010=100) Mengikut Seksyen Barangan (S.I.T.C.) <i>Import Volume Index (2010=100) by Commodity Sections (S.I.T.C.) Tables</i> | 15 |
| 4B | Jadual Peratus Perubahan Bulan ke Bulan Indeks Volum bagi Import (2010=100) Mengikut Seksyen Barangan (S.I.T.C.) <i>Month-on-month Percentage Change Import Volume Index (2010=100) by Commodity Sections (S.I.T.C.) Tables</i> | 16 |
| 4C | Jadual Peratus Perubahan Tahun ke Tahun Indeks Volum bagi Import (2010=100) Mengikut Seksyen Barangan (S.I.T.C.) <i>Year-on-year Percentage Change Import Volume Index (2010=100) by Commodity Sections (S.I.T.C.) Tables</i> | 17 |
| 5A | Jadual Terma Perdagangan (2010=100) Mengikut Seksyen Barangan (S.I.T.C.) <i>Terms of Trade (2010=100) by Commodity Sections (S.I.T.C.) Tables</i> | 18 |
| 5B | Jadual Peratus Perubahan Bulan ke Bulan Terma Perdagangan (2010=100) Mengikut Seksyen Barangan (S.I.T.C.) <i>Month-on-month Percentage Change Terms of Trade (2010=100) by Commodity Sections (S.I.T.C.) Tables</i> | 19 |
| 5C | Jadual Peratus Perubahan Tahun ke Tahun Terma Perdagangan (2010=100) Mengikut Seksyen Barangan (S.I.T.C.) <i>Year-on-year Percentage Change Terms of Trade (2010=100) by Commodity Sections (S.I.T.C.) Tables</i> | 20 |
| 6 | Jadual Indeks Volum Eksport – Asal & Pelarasan Musim (2010=100) <i>Export unit Volume Index – Actual & Seasonally Adjusted (2010=100) Tables</i> | 21 |
| 7 | Jadual Indeks Volum Import – Asal & Pelarasan Musim (2010=100) <i>Import unit Volume Index – Actual & Seasonally Adjusted (2010=100) Tables</i> | 22 |
| Nota Teknikal <i>Technical Notes</i> | | 23-31 |
| Lampiran <i>Appendix</i> | | 32-33 |

KATA PENGANTAR

Penerbitan Indeks Perdagangan Luar Negeri (IPLN) Malaysia merupakan penerbitan bulanan yang memaparkan Indeks Nilai Seunit, Indeks Volum dan Terma Perdagangan meliputi 10 seksyen utama barangan selaras dengan klasifikasi *United Nations "Standard International Trade Classification, Revision 4 (S.I.T.C. Rev 4)"*. IPLN disusun berdasarkan data perdagangan luar negeri Malaysia yang sebahagian besarnya diproses daripada borang pengiklanan kastam.

IPLN telah disusun buat pertama kalinya dengan menggunakan tahun 1970 sebagai tahun asas (1970=100), seterusnya diasaskan semula kepada tahun 1999, 2005 dan 2010. Bermula bulan rujukan Januari 2018, penyusunan IPLN masih mengekalkan 2010 sebagai "tempoh rujukan indeks" dengan 2013 sebagai "tempoh rujukan wajaran". Bermula bulan rujukan Januari 2019, IPLN dikemaskini sekali lagi menggunakan tahun 2015 sebagai "tempoh rujukan wajaran" dan masih mengekalkan tahun asas yang sama 2010=100.

Objektif utama IPLN adalah untuk mengukur perubahan paras nilai seunit serta volum eksport dan import Malaysia.

Ringkasan penemuan utama dan jadual terperinci indeks di peringkat seksyen (S.I.T.C. 1 digit) dipaparkan pada bahagian pertama dan kedua penerbitan. Seterusnya, nota teknikal berkaitan dengan objektif, skop dan liputan, konsep dan definisi serta kaedah pengiraan yang digunakan dimuatkan pada bahagian terakhir penerbitan bagi meningkatkan kefahaman berkenaan dengan IPLN.

Jabatan Perangkaan Malaysia merakamkan setinggi-tinggi penghargaan kepada semua pihak yang telah menyumbang secara langsung dan tidak langsung dalam merealisasikan penerbitan ini. Setiap maklum balas dan cadangan daripada semua pihak untuk penambahbaikan penerbitan ini pada masa hadapan amat dihargai.

Dato' Sri Dr. Mohd Uzir Mahidin

Ketua Perangkawan Malaysia

Jun 2024

PREFACE

The publication of External Trade Indices (ETI), Malaysia is a monthly publication which presents Unit Value Index, Volume Index and Terms of Trade covering 10 main sections of goods in line with classification of the United Nations "Standard International Trade Classification, Revision 4 (S.I.T.C. Rev 4)". ETI is compiled based on Malaysia external trade data which is in turn mainly processed from custom declaration forms.

The ETI was compiled for the first time using 1970 as the base year (1970=100), subsequently it has been rebased to 1999, 2005 and 2010. Commencing in reference month of January 2018, the compilation of ETI maintained 2010 as the "index reference period" with 2013 as "weight reference period". Effective with release of publication for January 2019, the ETI again updated using year 2015 as "weight reference period" while maintaining the same base year 2010=100.

The main objective of ETI is to measure the changes in the levels of unit values and volumes of Malaysia's merchandise imports and exports.

The summary of the main findings and the detailed index tables at sections (1-digit S.I.T.C) level are presented in the first and second part of this publication. Meanwhile, the technical notes on objectives, scope and coverage, concepts and definitions and the calculation techniques used are included in the final part of this publication to enhance understanding of the ETI.

The Department of Statistics Malaysia (DOSM) gratefully acknowledges the cooperation rendered by all parties who have contributed directly and indirectly in realising this publication. Every feedback and suggestions towards improving the future publication is highly appreciated.

Dato' Sri Dr. Mohd Uzir Mahidin
Chief Statistician Malaysia
June 2024



La ENVIPE 2013 permite conocer que entre los motivos que llevan a denunciar a un delito a no denunciar, están los costos atribuidos a la autoridad, como considerar la denuncia con el tiempo y la desconfianza en la autoridad.

ESTADOS UNIDOS MEXICANOS

12.2
87.1

37.7
61.9

Del total de las denuncias refiere que en el 53.2% de las denuncias de 2011, esta cifra fue...

1. RINGKASAN PENEMUAN *SUMMARY OF FINDINGS*



INDEKS PERDAGANGAN LUAR NEGERI, MEI 2024

External Trade Indices, May 2024

EKSPORT Exports

Nilai (RM Billion)
Value (RM Billion)
▲ 11.8%

114.7
APR '24
Apr '24

128.2
MEI '24
May '24

Alat Jentera & Kelengkapan Pengangkutan
Machinery & Transport Equipment
▲ 0.3%

Pelbagai Barang Keluaran Kilang
Miscellaneous Manufactured Articles
▲ 21.2%

Alat Jentera & Kelengkapan Pengangkutan
Machinery & Transport Equipment
▲ 11.9%

Minyak Galian
Mineral Fuels
▲ 1.5%

Bahan Kimia
Chemicals
▲ 0.5%



Minyak Galian
Mineral Fuels
▲ 7.5%



IMPORT Imports

Nilai (RM Billion)
Value (RM Billion)
▲ 10.4%

107.0
APR '24
Apr '24

118.1
MEI '24
May '24

Indeks Nilai Seunit
Unit Value Index
▲ 0.1%

Indeks Volum
Volume Index
▲ 10.3%

Minyak Galian
Mineral Fuels
▲ 3.3%



Minyak & Lemak Binatang & Sayur-sayuran
Animal & Vegetable Oils & Fats
▲ 2.3%



Bahan Mentah Tidak Boleh Dimakan
Inedible Crude Materials
▲ 0.3%



Minyak Galian
Mineral Fuels
▲ 26.0%



Alat Jentera & Kelengkapan Pengangkutan
Machinery & Transport Equipment
▲ 10.9%



Barang-barang Keluaran Kilang
Manufactured Goods
▲ 6.0%



TERMA PERDAGANGAN Terms of Trade

▲ 0.7%

Alat Jentera & Kelengkapan Pengangkutan
Machinery & Transport Equipment
▲ 1.6%



Bahan Mentah Tidak Boleh Dimakan
Inedible Crude Materials
▲ 1.2%



Makanan
Food
▲ 1.0%



INDEKS PERDAGANGAN LUAR NEGERI MEI 2024

PRESTASI PERDAGANGAN MALAYSIA

Prestasi Perdagangan Malaysia mengekalkan pertumbuhan positif pada Mei 2024. Jumlah perdagangan menunjukkan peningkatan 10.3 peratus atau RM23.0 bilion untuk mencecah nilai RM246.3 bilion berbanding RM223.3 bilion pada tahun sebelumnya. Import menunjukkan trend positif dengan peningkatan 13.8 peratus atau RM14.3 bilion kepada RM118.1 bilion. Pada masa yang sama eksport bertambah 7.3 peratus atau RM8.7 bilion kepada RM128.2 bilion. Imbangan perdagangan mencatatkan lebih RM10.1 bilion, turun 35.4 peratus daripada RM15.7 bilion pada Mei 2023.

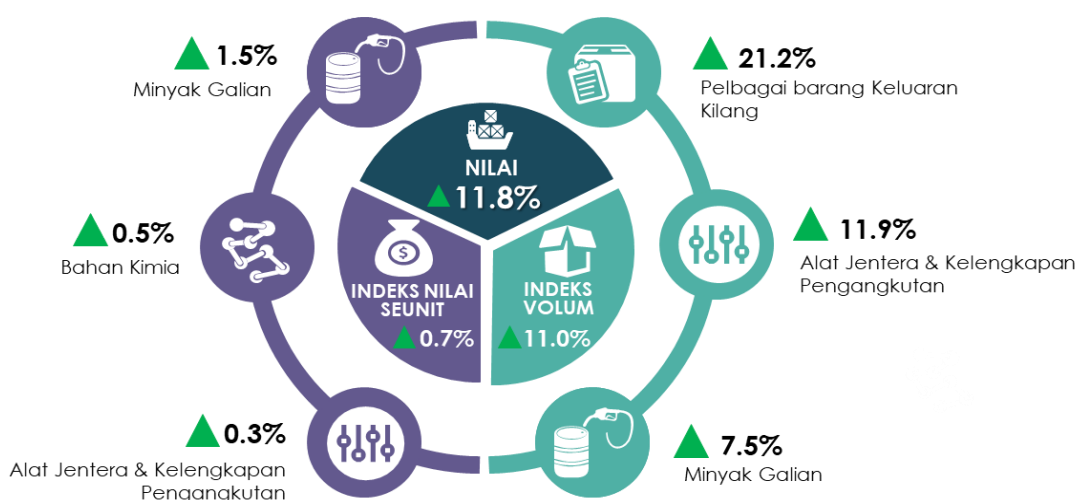
Berbanding April 2024, eksport, import, jumlah dagangan dan imbangan perdagangan masing-masing mencatatkan pertumbuhan positif 11.8 peratus, 10.4 peratus, 11.1 peratus dan 30.9 peratus. Eksport, import dan jumlah dagangan bagi tempoh Januari hingga Mei 2024 masing-masing meningkat 4.5 peratus, 13.7 peratus dan 8.7 peratus berbanding tempoh yang sama tahun sebelumnya. Sementara itu, lebih dagangan menyusut 43.9 peratus.

PERBANDINGAN BULAN KE BULAN

EKSPORT

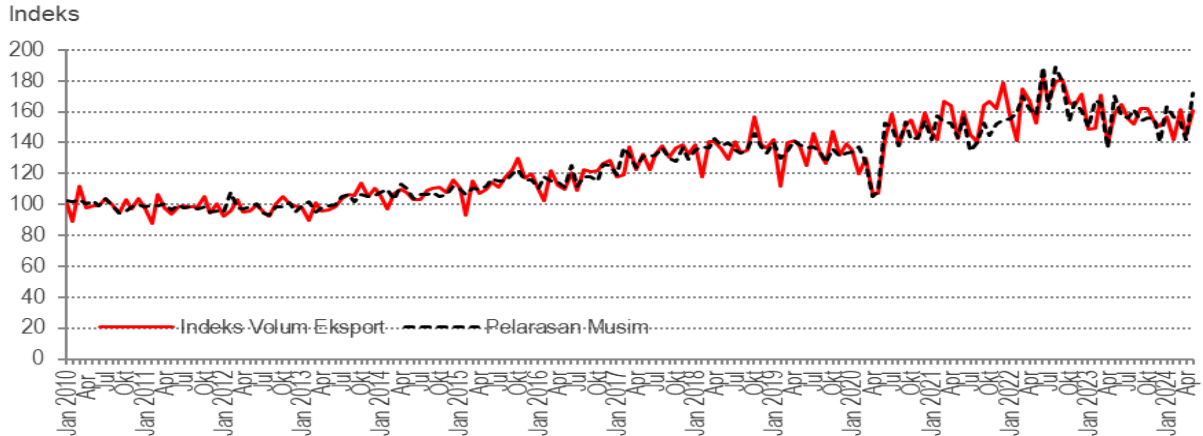
Perbandingan bulan ke bulan menunjukkan **indeks nilai seunit eksport** meningkat 0.7 peratus pada Mei 2024. Peningkatan ini disumbangkan oleh indeks minyak galian (+1.5%), bahan kimia (+0.5%) dan alat jentera & kelengkapan pengangkutan (+0.3%).

Begitu juga, **indeks volum eksport** naik 11.0 peratus selaras dengan kenaikan indeks pelbagai barang keluaran kilang (+21.2%), alat jentera & kelengkapan pengangkutan (+11.9%) dan minyak galian (+7.5%). **Indeks volum eksport pelarasan bermusim** turut bertambah 21.7 peratus daripada 141.7 mata kepada 172.5 mata (**Carta 1**).



Paparan 1: Prestasi Nilai Eksport, Indeks Nilai Seunit dan Indeks Volum serta Penyumbang Utama Indeks Nilai Seunit dan Indeks Volum Eksport

PERBANDINGAN BULAN KE BULAN

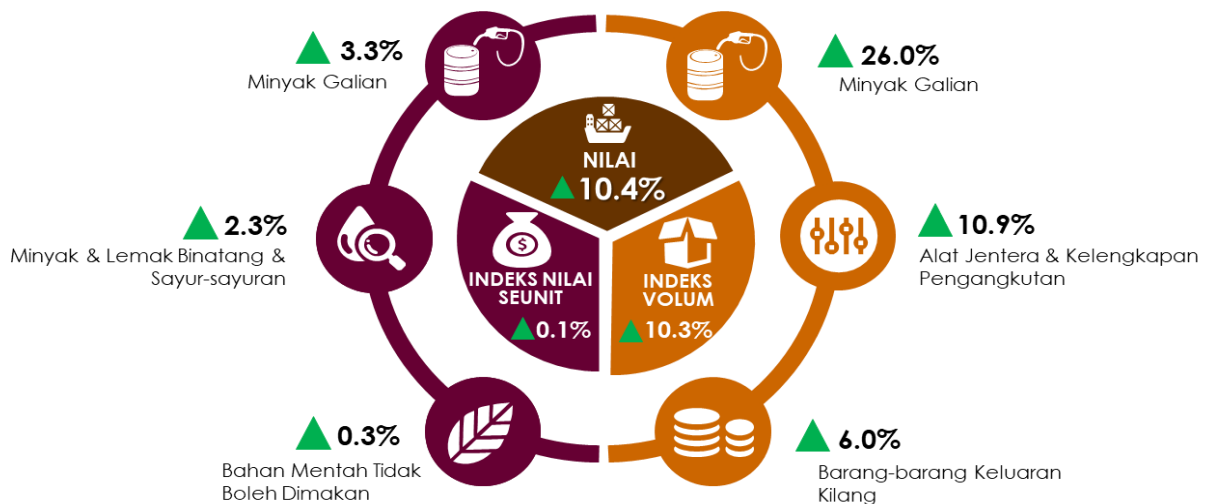


Carta 1: Indeks Volum Eksport - Asal & Pelarasan Musim

IMPORT

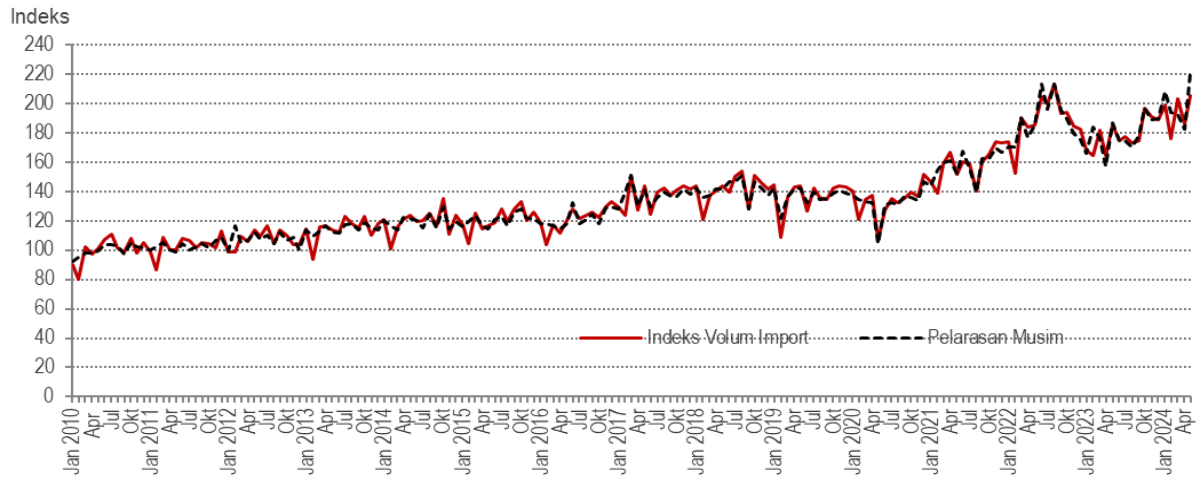
Indeks nilai seunit import menokok 0.1 peratus pada Mei 2024, disumbangkan oleh kenaikan indeks minyak galian (+3.3%), minyak & lemak binatang & sayur-sayuran (+2.3%) dan bahan mentah tidak boleh dimakan (+0.3%).

Sementara itu, **indeks volum import** turut melonjak 10.3 peratus pada Mei 2024 berbanding April 2024, disumbangkan oleh peningkatan indeks minyak galian (+26.0%), alat jentera & kelengkapan pengangkutan (+10.9%) dan barang-barang keluaran kilang (+6.0%). **Indeks volum import pelarasan bermusim** bertambah 20.9 peratus daripada 182.6 mata kepada 220.9 mata (**Carta 2**).



Paparan 2: Prestasi Nilai Import, Indeks Nilai Seunit dan Indeks Volum serta Penyumbang Utama Indeks Nilai Seunit dan Indeks Volum Import

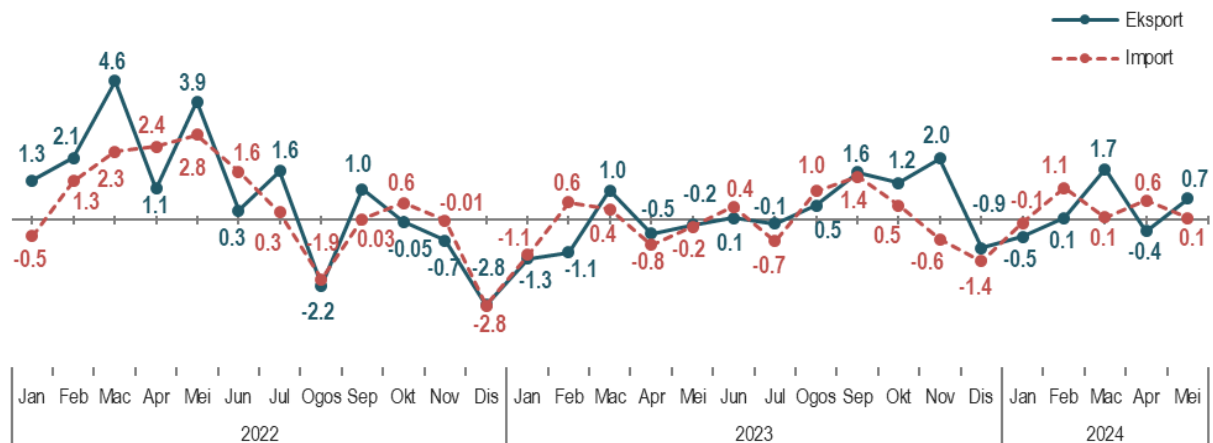
PERBANDINGAN BULAN KE BULAN



Carta 2: Indeks Volum Import - Asal & Pelarasan Musim

SIRI MASA INDEKS NILAI SEUNIT EKSPORT & IMPORT

Perbandingan bulan ke bulan, **indeks nilai seunit eksport** kembali menunjukkan kenaikan pada Mei 2024 manakala **indeks nilai seunit import** merekodkan peningkatan yang lebih perlahan. Prestasi yang tidak menentu dapat dilihat sejak Oktober 2022.



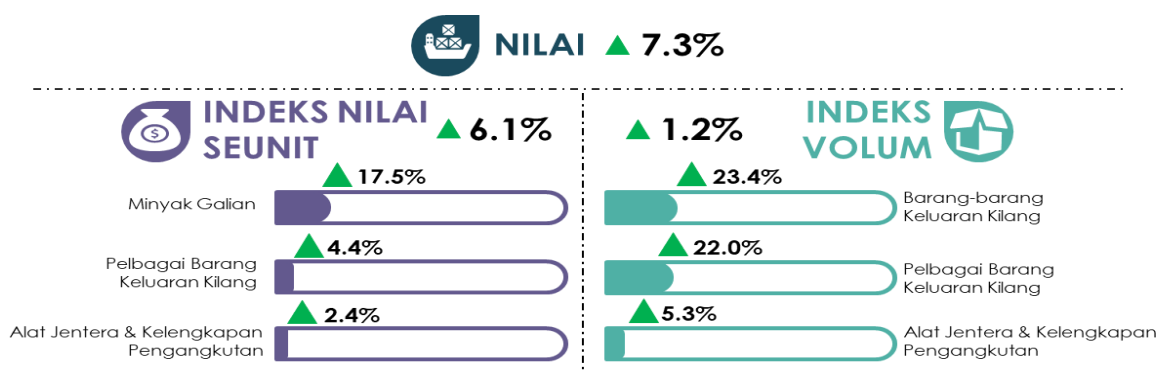
Carta 3: Peratus Perubahan Bulan ke Bulan bagi Indeks Nilai Seunit Eksport & Import Januari 2022 – Mei 2024

PERBANDINGAN TAHUN KE TAHUN

EKSPORT

Indeks nilai seunit eksport bertambah 6.1 peratus tahun ke tahun pada Mei 2024. Peningkatan ini disumbangkan oleh indeks minyak galian (+17.5%), pelbagai barang keluaran kilang (+4.4%) dan alat jentera & kelengkapan pengangkutan (+2.4%).

Indeks volum eksport juga menokok 1.2 peratus pada Mei 2024. Pertambahan ini disumbangkan oleh indeks barang-barang keluaran kilang (+23.4%), pelbagai barang keluaran kilang (+22.0%) dan alat jentera & kelengkapan pengangkutan (+5.3%).

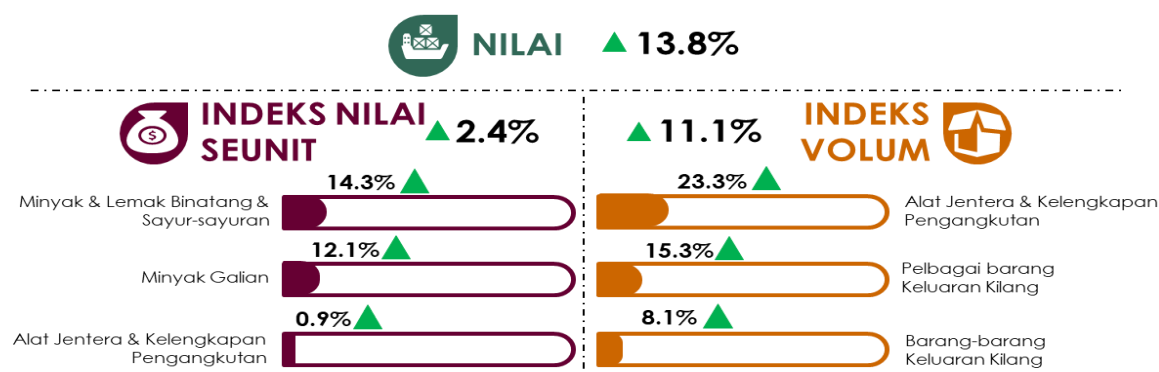


Paparan 3: Prestasi Nilai Eksport, Indeks Nilai Seunit dan Indeks Volum serta Penyumbang Utama Indeks Nilai Seunit dan Indeks Volum Eksport

IMPORT

Indeks volum import naik 11.1 peratus pada Mei 2024 berbanding bulan yang sama tahun lalu. Pertumbuhan positif indeks volum import didorong oleh kenaikan indeks alat jentera & kelengkapan pengangkutan (+23.3%), pelbagai barang keluaran kilang (+15.3%) dan barang-barang keluaran kilang (+8.1%).

Sementara itu, **indeks nilai seunit import** turut naik 2.4 peratus pada Mei 2024 berbanding bulan yang sama tahun sebelumnya. Peningkatan ini disumbangkan oleh indeks minyak & lemak binatang & sayur-sayuran (+14.3%), minyak galian (+12.1%) dan alat jentera & kelengkapan pengangkutan (+0.9%).

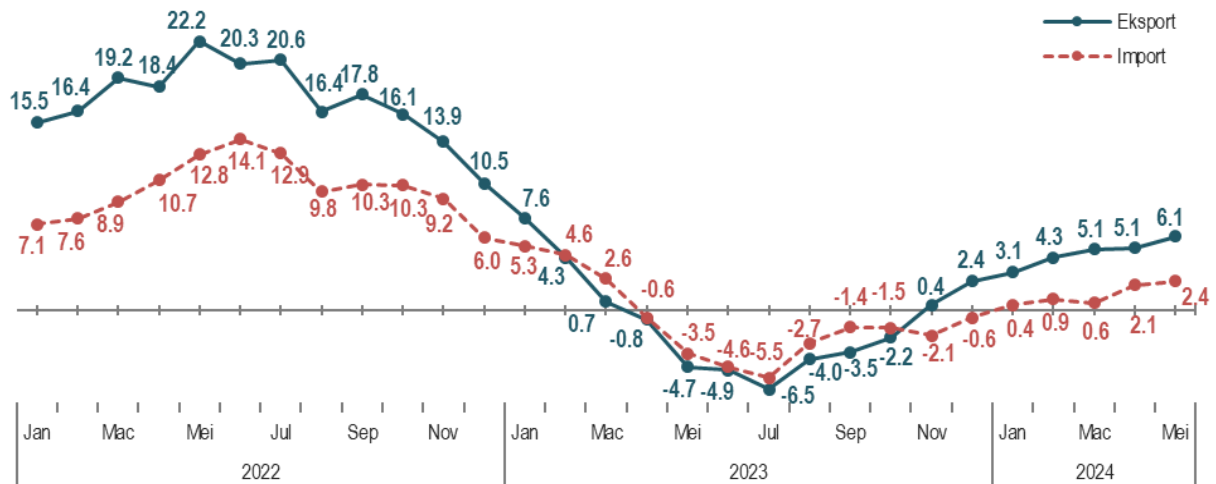


Paparan 4: Prestasi Nilai Import, Indeks Nilai Seunit dan Indeks Volum serta Penyumbang Utama Indeks Nilai Seunit dan Indeks Volum Import

PERBANDINGAN TAHUN KE TAHUN

SIRI MASA INDEKS NILAI SEUNIT EKSPORT & IMPORT

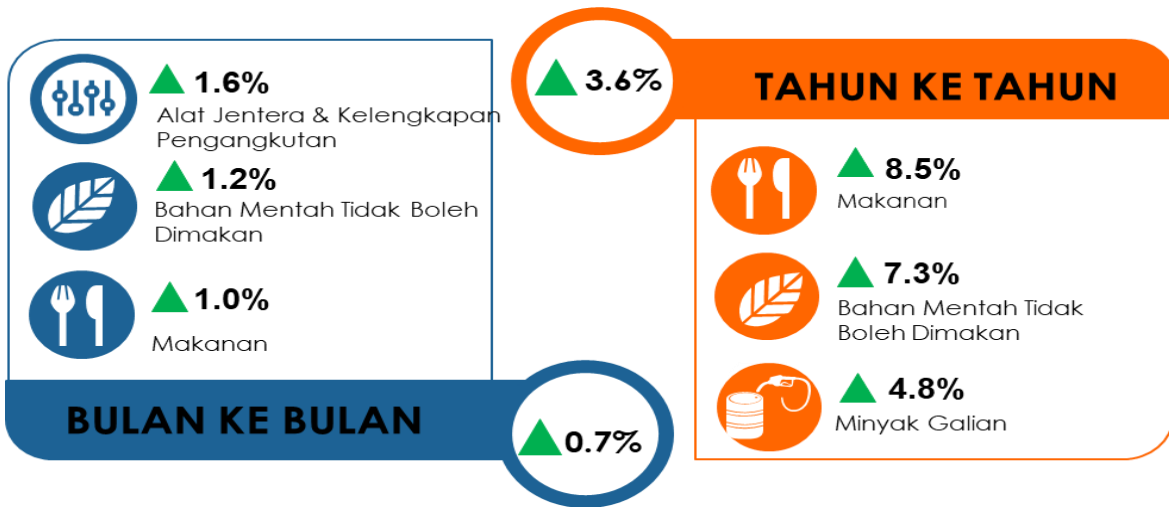
Kedua-dua **indeks nilai seunit eksport dan import** mengekalkan pertumbuhan tahunan positif pada Mei 2024. Trend peningkatan dilihat bagi kedua-dua indeks pada tahun ini berbanding pertumbuhan negatif yang direkodkan di kebanyakan bulan pada tahun lepas.



Carta 4: Peratus Perubahan Tahun ke Tahun bagi Indeks Nilai Seunit Eksport & Import Januari 2022 – Mei 2024

TERMA PERDAGANGAN

Terma perdagangan Malaysia berkembang 0.7 peratus kepada 114.8 mata pada Mei 2024 berbanding April 2024, didorong oleh pertambahan indeks alat jentera & kelengkapan pengangkutan (+1.6%), bahan mentah tidak boleh dimakan (+1.2%) dan makanan (+1.0%).

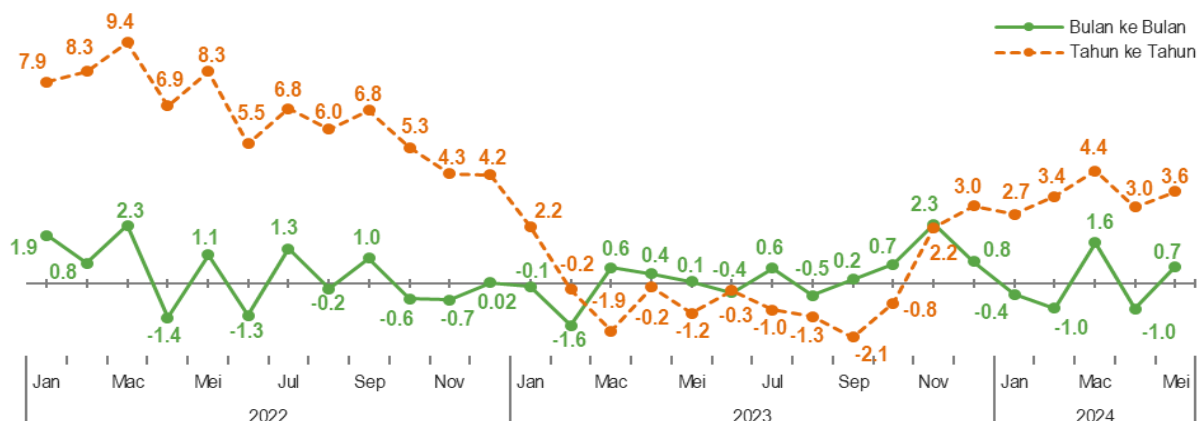


Paparan 5: Penyumbang Utama Terma Perdagangan Mengikut Bulan ke Bulan dan Tahun ke Tahun

Berasaskan tahun ke tahun, **terma perdagangan Malaysia** menokok 3.6 peratus daripada 110.8 mata pada Mei tahun lalu. Kenaikan ini disumbangkan oleh peningkatan indeks makanan (+8.5%), bahan mentah tidak boleh dimakan (+7.3%) dan minyak galian (+4.8%).

SIRI MASA TERMA PERDAGANGAN

Prestasi tahunan **terma perdagangan Malaysia** pada Mei 2024 mengekalkan pertumbuhan positif sejak November 2023. Di sebalik prestasi bulanan yang tidak menentu, terma perdagangan kekal pada paras melebihi 100.0 mata sejak Januari 2022.



Carta 5: Terma Perdagangan, Januari 2022 – Mei 2024

MALAYSIA'S TRADE PERFORMANCE

Malaysia's trade performance maintained positive growth in May 2024. Total trade recorded an increase of 10.3 per cent or RM23.0 billion to reach a value of RM246.3 billion as compared to RM223.3 billion in the previous year. Imports showed a positive trend with an increase of 13.8 per cent or RM14.3 billion to RM118.1 billion. Concurrently, exports rose by 7.3 per cent or RM8.7 billion to RM128.2 billion. The trade balance recorded a surplus of RM10.1 billion, down by 35.4 per cent from RM15.7 billion in May 2023.

As compared to April 2024, exports, imports, total trade and trade balance recorded a positive growth of 11.8 per cent, 10.4 per cent, 11.1 per cent and 30.9 per cent, respectively. Exports, imports and total trade for the period of January to May 2024 rose by 4.5 per cent, 13.7 per cent, and 8.7 per cent, respectively, as compared to the same period of preceding year. Meanwhile, trade surplus declined by 43.9 per cent.

MONTH-ON-MONTH COMPARISON

EXPORTS

The export unit value index went up by 0.7 per cent in May 2024 as compared to the previous month, led by the increase in the index of mineral fuels (+1.5%), chemicals (+0.5%) and machinery & transport equipment (+0.3%).

Likewise, the export volume index rose by 11.0 per cent in line with the increase in the index of miscellaneous manufactured articles (+21.2%), machinery & transport equipment (+11.9%) and mineral fuels (+7.5%). The seasonally adjusted export volume index also ascending by 21.7 per cent from 141.7 points to 172.5 points (Chart 1).

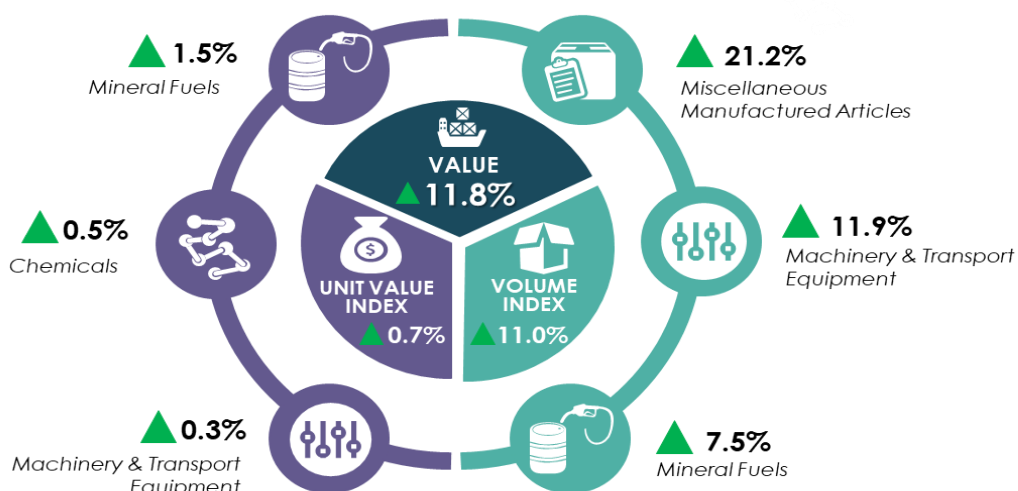


Exhibit 1: Export Value, Unit Value Index and Volume Index Performances and Main Contributors of Export Unit Value and Volume Indices

MONTH-ON-MONTH COMPARISON

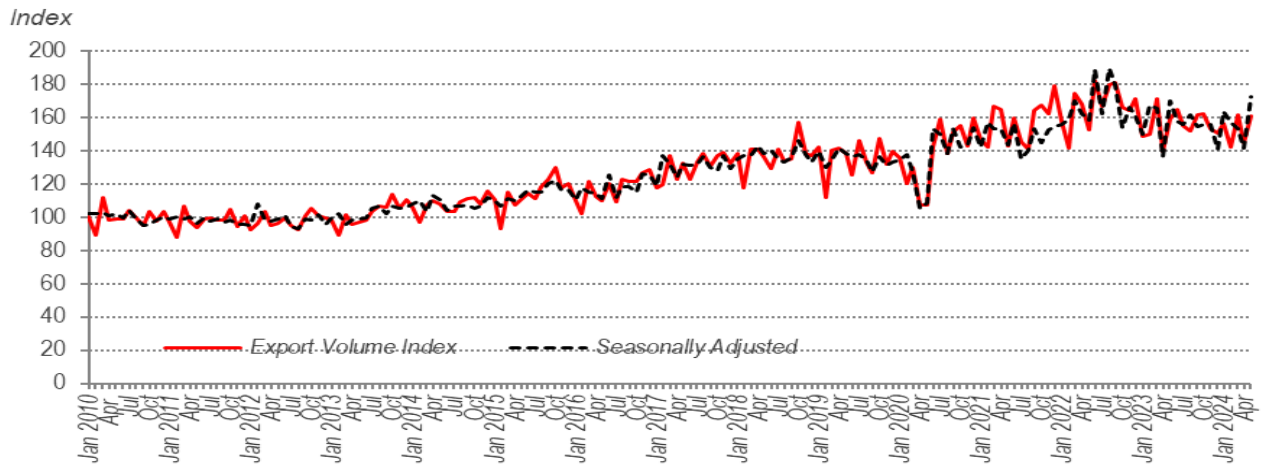


Chart 1: Export Volume Indices - Actual & Seasonally Adjusted

IMPORTS

The import unit value index edged up by 0.1 per cent in May 2024, contributed from the increase in the index of mineral fuels (+3.3%), animal & vegetable oils & fats (+2.3%) and inedible crude material (+0.3%).

Meanwhile, **the import volume index** also surged by 10.3 per cent in May 2024 as compared to April 2024, attributed from the increment in the index of mineral fuels (+26.0%), machinery & transport equipment (+10.9%) and manufactured goods (+6.0%). **The seasonally adjusted import volume index** went up by 20.9 per cent from 182.6 points to 220.9 points (**Chart 2**).

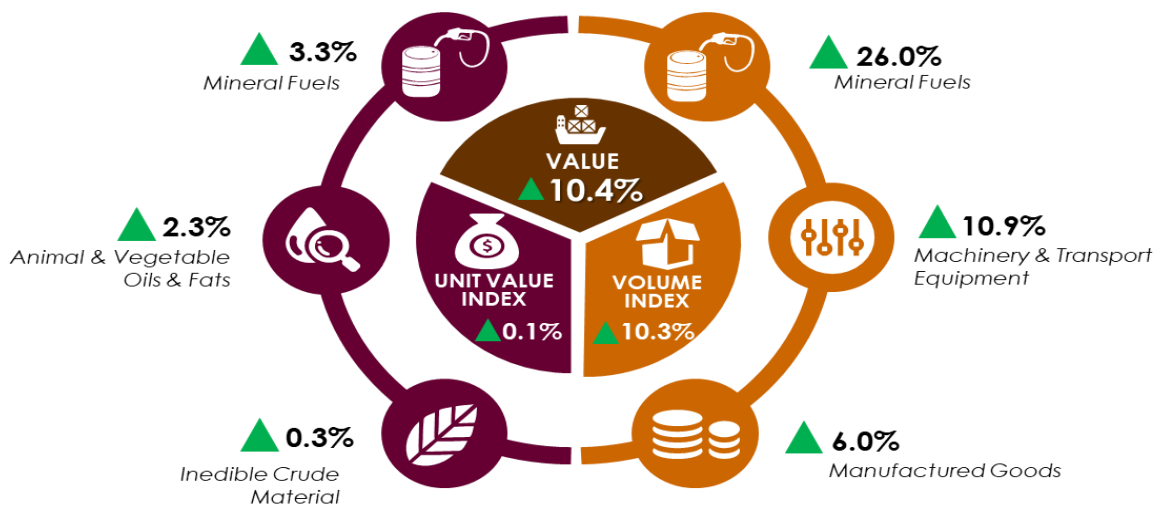


Exhibit 2: Import Value, Unit Value Index and Volume Index Performances and Main Contributors of Import Unit Value and Volume Indices

MONTH-ON-MONTH COMPARISON

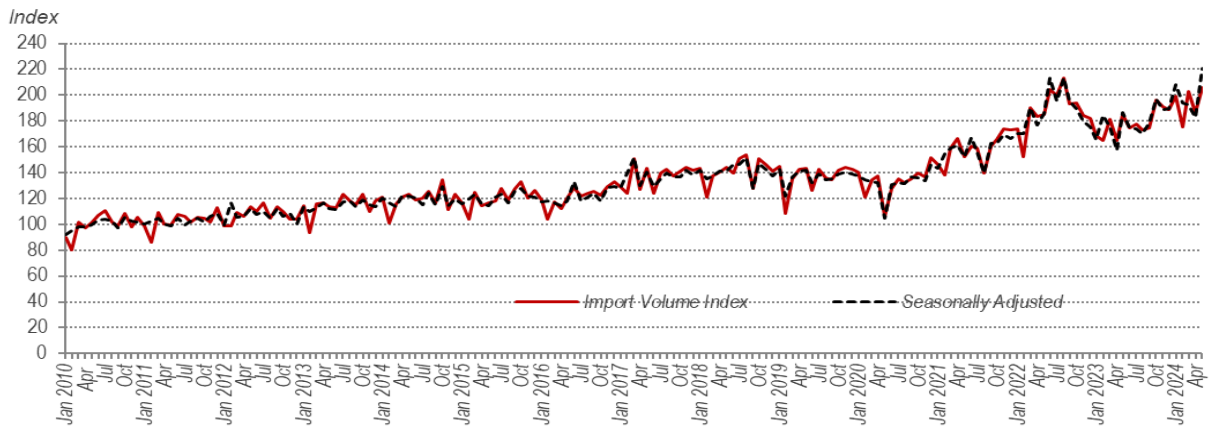
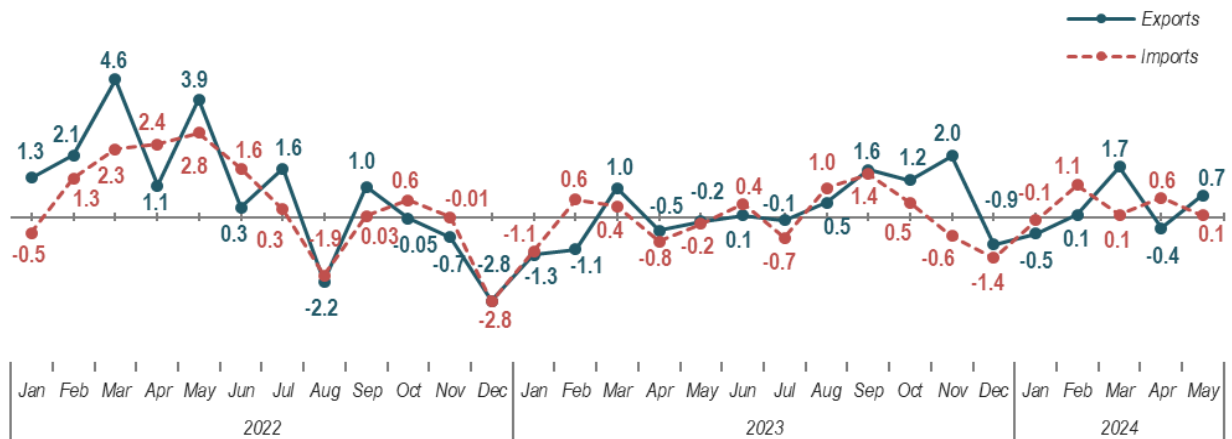


Chart 2: Import Volume Indices - Actual & Seasonally Adjusted

TIME-SERIES OF EXPORT & IMPORT UNIT VALUE INDICES

Month-to-month comparison, **the export unit value index** turned around to show an increase in May 2024, while **the import unit value index** recorded a slower increase. Up-and-down performance has been evident since October 2022.



**Chart 3: Month-on-Month Percentage Change of Export & Import Unit Value Indices
January 2022 – May 2024**

YEAR-ON-YEAR COMPARISON

EXPORTS

The export unit value index went up by 6.1 per cent y-o-y in May 2024. The increment was led by the increase in the index of mineral fuels (+17.5%), miscellaneous manufactured articles (+4.4%) and machinery & transport equipment (+2.4%).

The export volume index also increased by 1.2 per cent in May 2024. The increment was attributed from the index of manufactured goods (+23.4%), miscellaneous manufactured articles (+22.0%) and machinery & transport equipment (+5.3%).

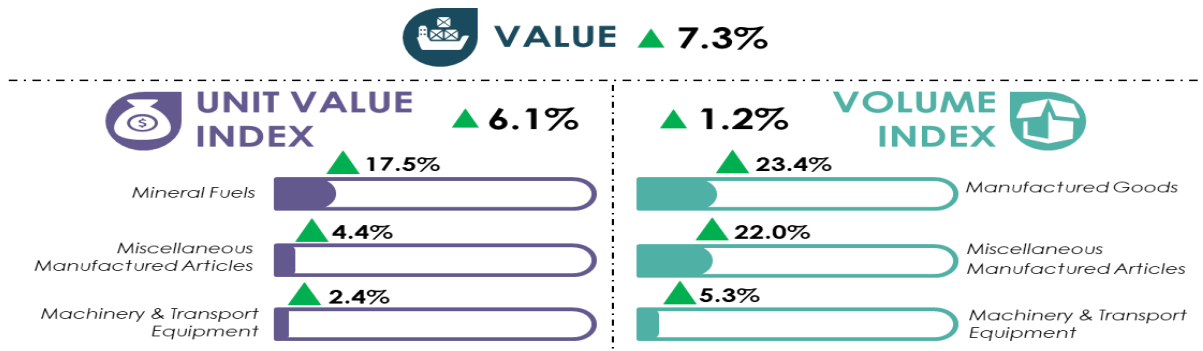


Exhibit 3: Export Value, Unit Value Index and Volume Index Performances and Main Contributors of Export Unit Value and Volume Indices

IMPORTS

The import volume index increased by 11.1 per cent in May 2024 as compared to the same month of the previous year. The positive growth in the import volume index was driven by the increase in the index of machinery & transport equipment (+23.3%), miscellaneous manufactured articles (+15.3%) and manufactured goods (+8.1%).

Meanwhile, import unit value index also went up by 2.4 per cent in May 2024 as compared to the same month of the previous year. The increment was contributed by the index of animal & vegetable oils & fats (+14.3%), mineral fuels (+12.1%) and machinery & transport equipment (+0.9%).

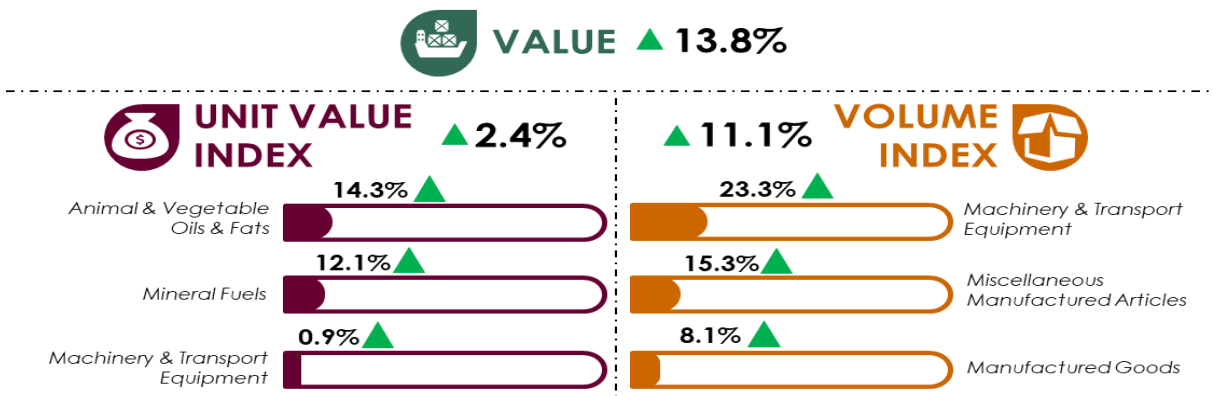
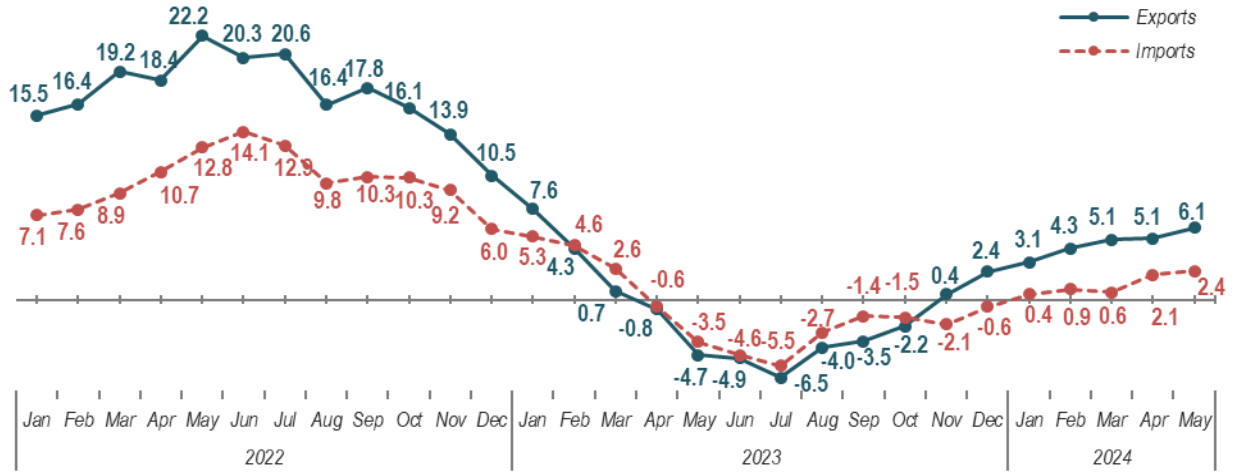


Exhibit 4: Import Value, Unit Value Index and Volume Index Performances and Main Contributors of Import Unit Value and Volume Indices

YEAR-ON-YEAR COMPARISON

TIME-SERIES OF EXPORT & IMPORT UNIT VALUE INDICES

Both **export and import unit value indices** maintained positive annual growth in May 2024. An upward trend is seen for both indices this year as compared to the negative growth recorded in most months last year.



**Chart 4: Year-on-Year Percentage Change of Export & Import Unit Value Indices
January 2022 – May 2024**

TERMS OF TRADE

Malaysia's terms of trade grew by 0.7 per cent month-on-month to 114.8 points in May 2024 as compared to April 2024, driven by the increment in the index of machinery & transport equipment (+1.6%), inedible crude materials (+1.2%) and food (+1.0%).

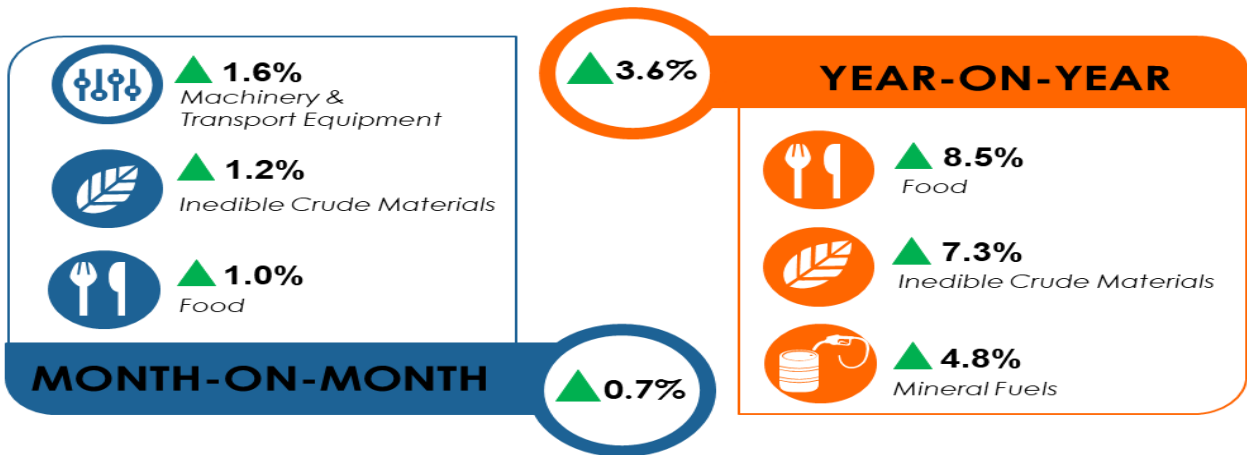


Exhibit 5: Main Contributors of Terms of Trade based Month-on-Month and Year-on-Year

For y-o-y comparison, **Malaysia's terms of trade** rose by 3.6 per cent from 110.8 points in May of previous year. This was driven by the increase in the index of food (+8.5%), inedible crude materials (+7.3%) and mineral fuels (+4.8%).

TIME-SERIES OF TERMS OF TRADE

The annual performance of **Malaysia's terms of trade** in May 2024 maintained positive growth since November 2023. Despite the volatile monthly performance, the terms of trade have remained above 100 points since January 2022.

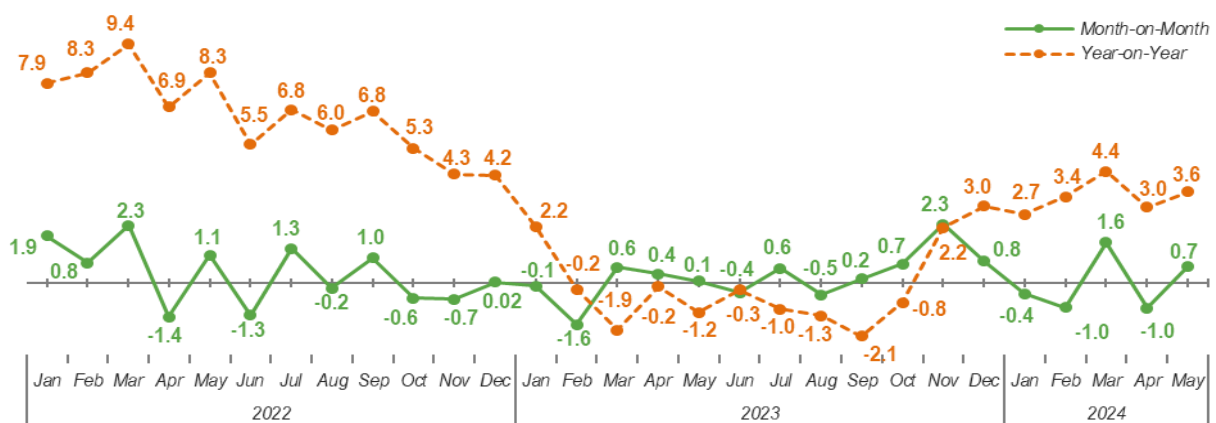


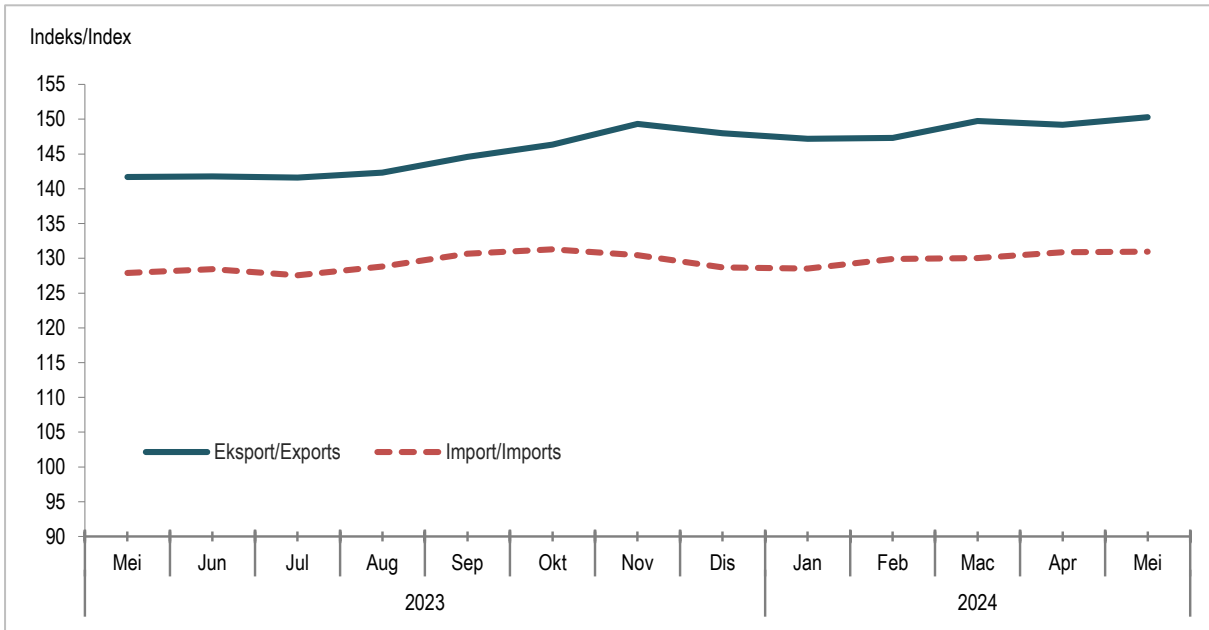
Chart 5: Terms of Trade, January 2022 – May 2024



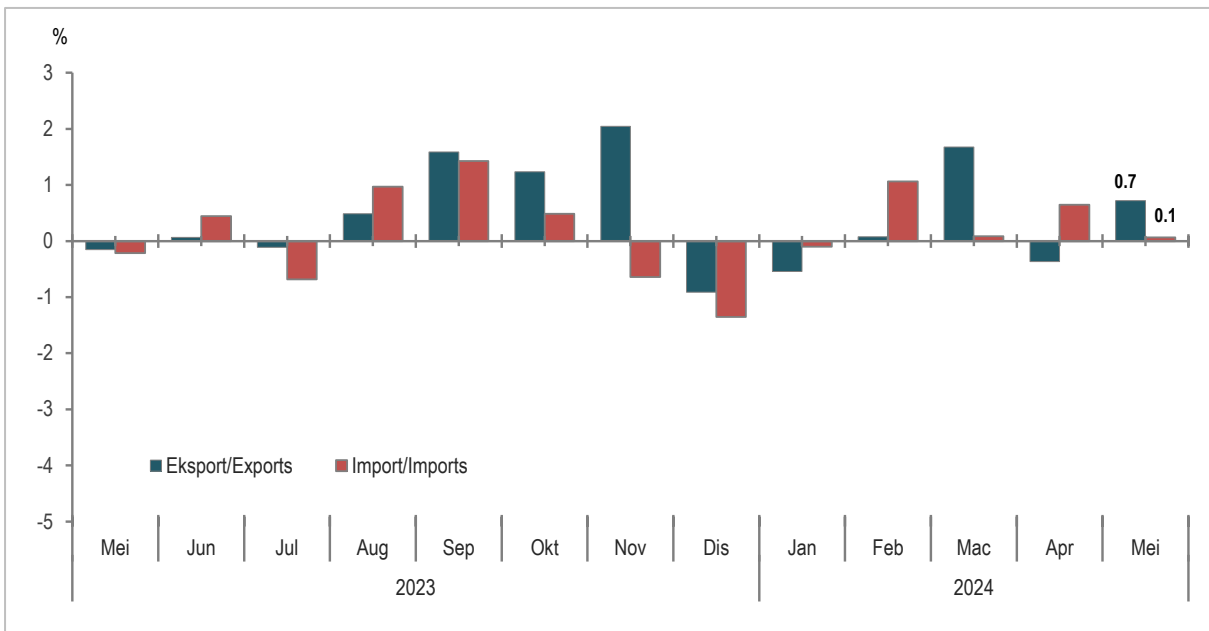
2. CARTA & JADUAL STATISTIK

*STATISTICAL TABLES
& CHARTS*

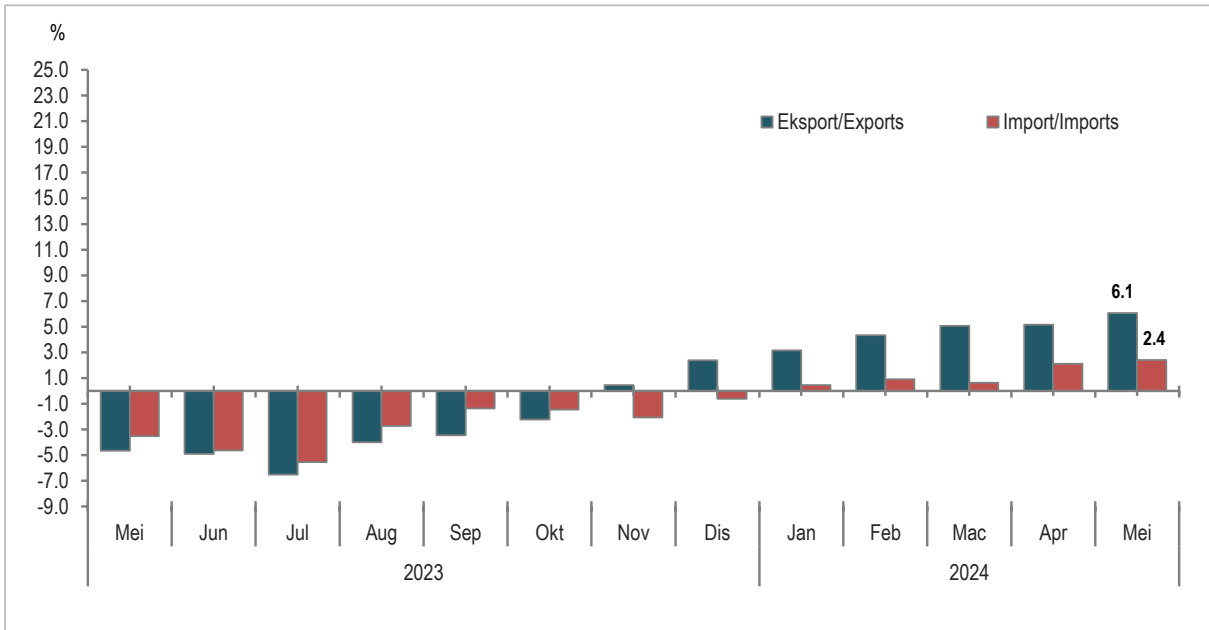
Carta 1.1: Indeks Nilai Seunit Eksport dan Import
 Chart 1.1: Export and Import Unit Value Index



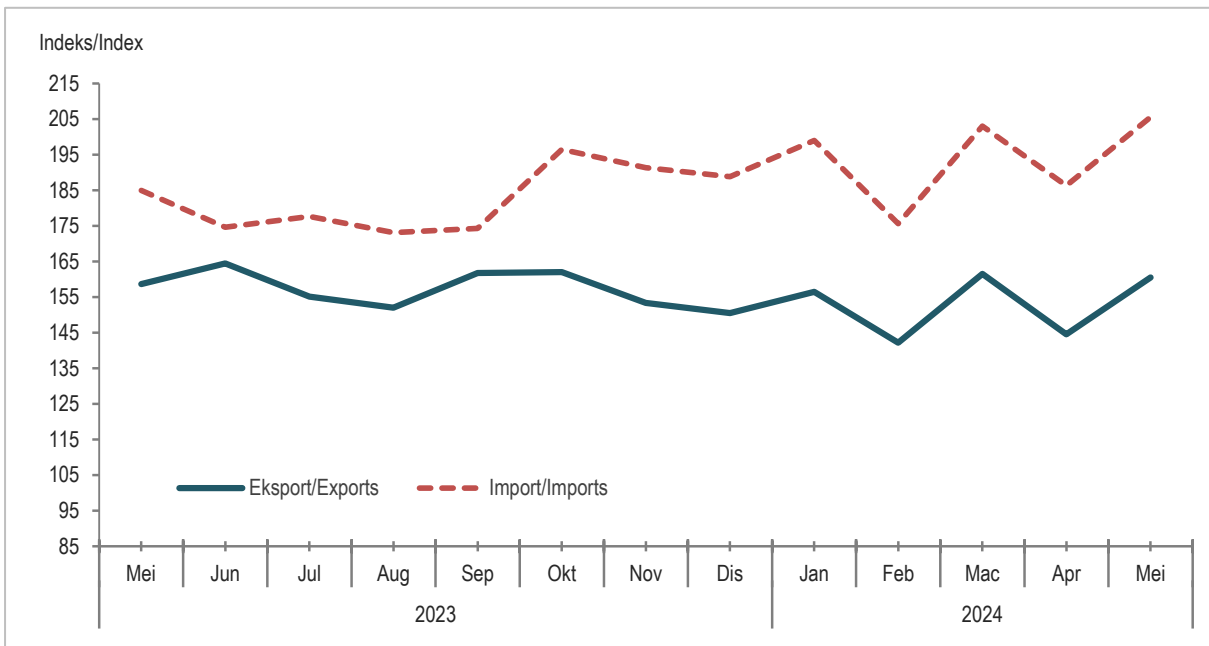
Carta 1.2: Peratus Perubahan Bulan ke Bulan Eksport dan Import Indeks Nilai seunit
 Chart 1.2: Month-on-Month Percentage Change in Export and Import Unit Value Index



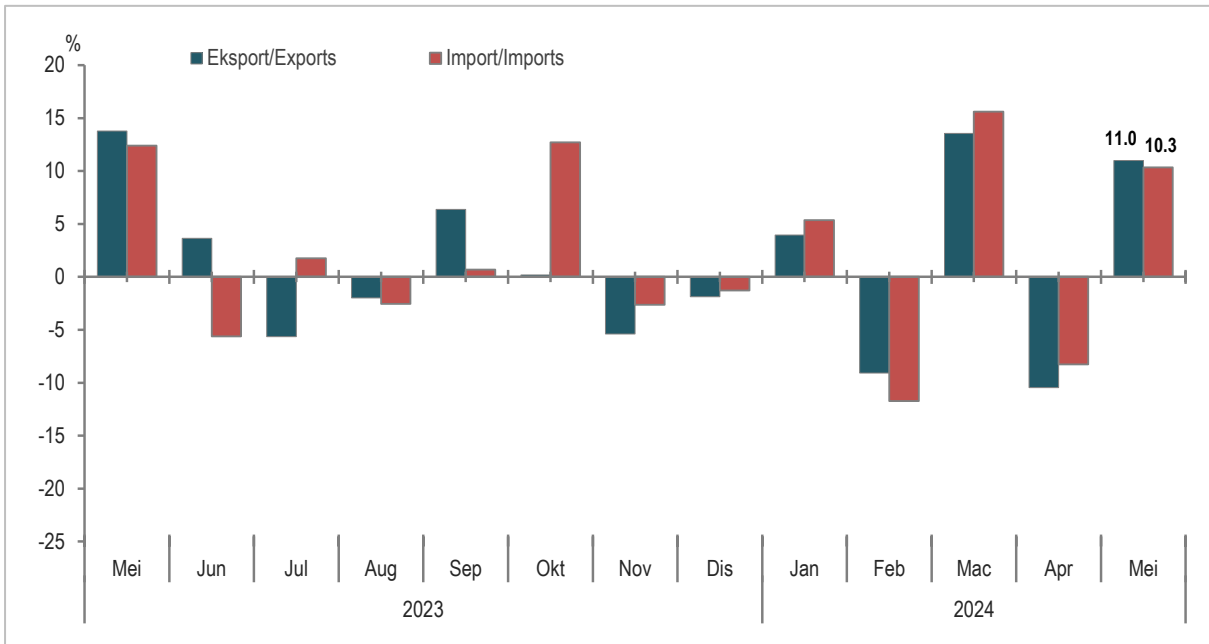
Carta 1.3: Peratus Perubahan Tahun Ke Tahun Indeks Nilai Seunit Eksport dan Import
 Chart 1.3: Year-on-Year Percentage Change in Export and Import Unit Value Index



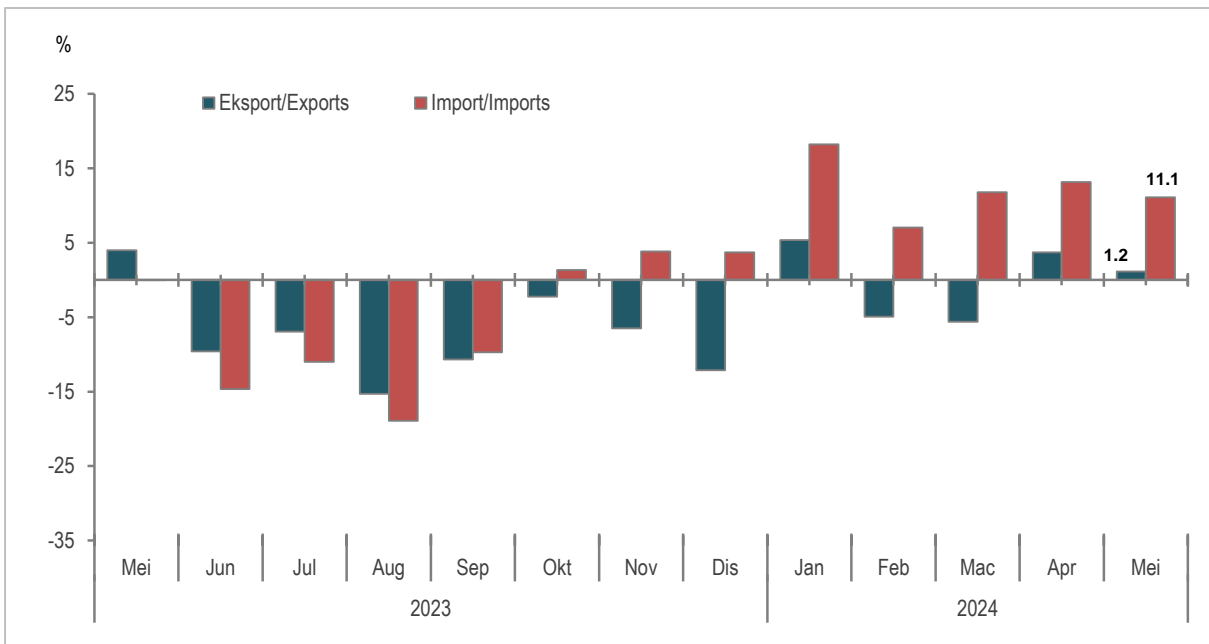
Carta 2.1: Indeks Volum Eksport dan Import
 Chart 2.1: Export and Import Volume Indices



Carta 2.2: Peratus Perubahan Bulan ke Bulan Indeks Volum Eksport dan Import
 Chart 2.2: Month-on-Month Percentage Change Export and Import Volume Index



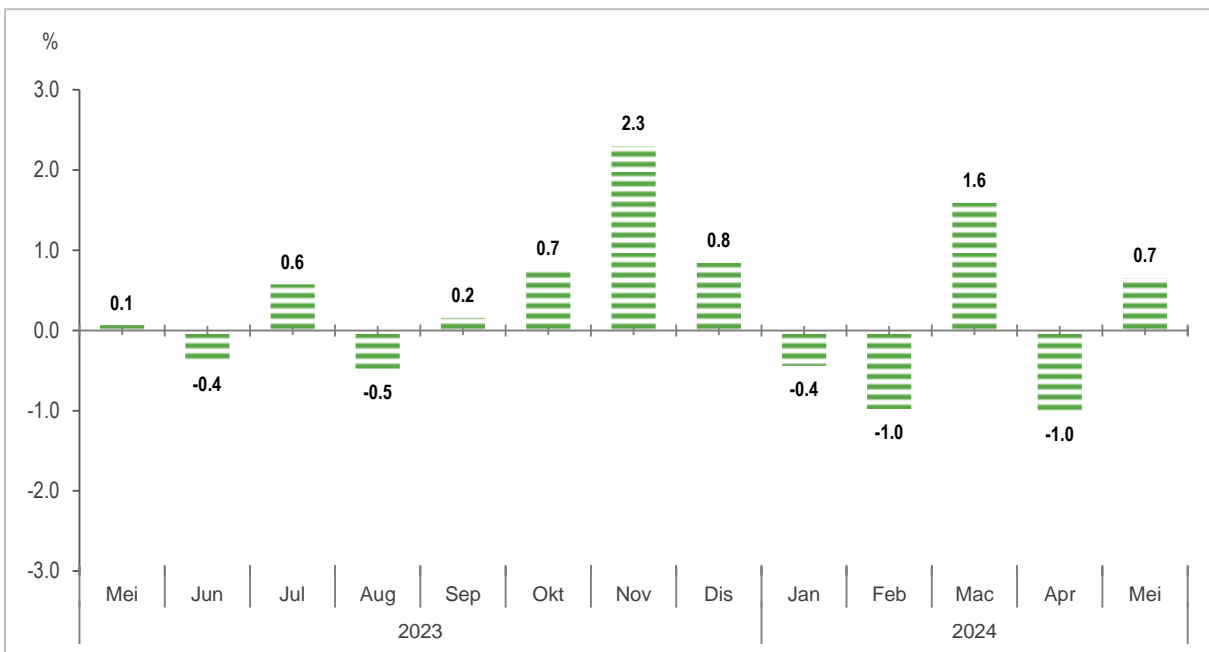
Carta 2.3: Peratus Perubahan Tahun ke Tahun Indeks Volum Eksport dan Import
 Chart 2.3: Year-on-Year Percentage Change in Export and Import Volume Index



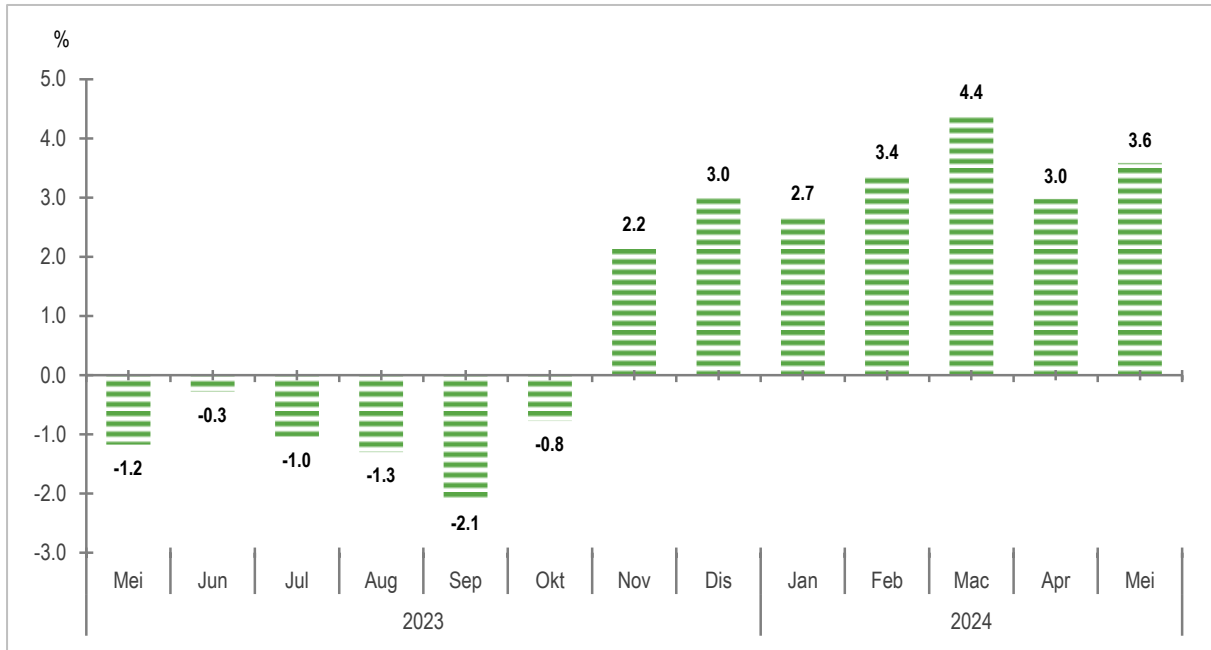
Carta 3.1: Indeks Terma Perdagangan
 Chart 3.1: Terms of Trade Index



Carta 3.2: Peratus Perubahan Bulan Ke Bulan Indeks Terma Perdagangan
 Chart 3.2: Month-on-Month Percentage Change in Terms of Trade Index



Carta 3.3: Peratus Perubahan Tahun ke Tahun Indeks Terma Perdagangan
Chart 3.3: Year-on-Year Percentage Change in Terms of Trade Index



MALAYSIA
JADUAL 1A : INDEKS NILAI SEUNIT EKSPORT (2010=100) MENGIKUT SEKSYEN BARANGAN (S.I.T.C.)
TABLE 1A : EXPORT UNIT VALUE INDICES (2010=100) BY COMMODITY SECTION (S.I.T.C.)

| TEMPOH PERIOD | JUMLAH TOTAL | 0 MAKANAN FOOD | 1 MINUMAN DAN TEBAKAU BEVERAGES AND TOBACCO | 2 BAHAN-BAHAN MENTAH TIDAK BOLEH DIMAKAN CRUDE MATERIALS, INEDIBLE | 3 BAHAN API GALIAN, PELINCIR, DLL. MINERAL FUELS, LUBRICANTS, ETC. | 4 MINYAK DAN LEMAK BINATANG DAN SAYURAN ANIMAL AND VEGETABLE OILS AND FATS | 5 BAHAN KIMIA CHEMICALS | 6 BARANG- BARANG KELUARAN KILANG MANUFACTURED GOODS | 7 JENTERA & KELENGKAPAN PENGANGKUTAN MACHINERY & TRANSPORT EQUIPMENT | 8 PELBAGAI BARANG KELUARAN KILANG MISCELLANEOUS MANUFACTURED ARTICLES | 9 PELBAGAI URUS NIAGA DAN BARANGAN MISCELLANEOUS TRANSACTIONS AND COMMODITIES |
|-------------------|------------------|----------------------|---|---|--|---|-------------------------------|---|--|--|---|
| WAJARAN / WEIGHTS | 100.0 | 3.5 | 0.6 | 2.7 | 16.1 | 6.0 | 7.8 | 9.7 | 42.3 | 10.9 | 0.4 |
| 2010 | 100.0 | 100.0 | 100.0 | 100.0 | 100.0 | 100.0 | 100.0 | 100.0 | 100.0 | 100.0 | 100.0 |
| 2011 | 111.3 | 110.7 | 100.8 | 125.1 | 130.1 | 127.8 | 112.7 | 107.9 | 102.0 | 106.0 | 117.7 |
| 2012 | 112.4 | 112.6 | 101.5 | 108.5 | 141.7 | 113.8 | 110.8 | 98.9 | 105.1 | 107.7 | 147.8 |
| 2013 | 110.5 | 114.0 | 102.1 | 94.7 | 140.0 | 96.3 | 109.8 | 96.1 | 105.7 | 109.8 | 149.0 |
| 2014 | 111.7 | 117.1 | 103.7 | 84.7 | 142.1 | 101.9 | 116.3 | 96.7 | 105.7 | 111.7 | 151.8 |
| 2015 | 107.1 | 122.9 | 108.7 | 82.0 | 99.9 | 93.2 | 126.7 | 100.1 | 109.1 | 116.5 | 147.6 |
| 2016 | 104.9 | 129.7 | 115.7 | 79.9 | 75.2 | 100.4 | 133.7 | 99.7 | 109.7 | 120.4 | 172.4 |
| 2017 | 112.5 | 138.6 | 124.5 | 91.2 | 96.1 | 113.8 | 149.0 | 104.5 | 111.0 | 124.3 | 193.5 |
| 2018 | 114.4 | 143.1 | 132.7 | 84.9 | 111.9 | 97.1 | 154.8 | 106.0 | 110.1 | 126.2 | 197.7 |
| 2019 | 115.3 | 146.7 | 142.7 | 84.4 | 112.1 | 87.7 | 153.7 | 103.0 | 112.8 | 129.0 | 187.6 |
| 2020 | 112.4 | 151.6 | 147.7 | 83.8 | 84.1 | 107.5 | 154.5 | 101.9 | 114.0 | 129.9 | 172.3 |
| 2021 | 123.9 | 157.3 | 152.9 | 89.9 | 112.9 | 159.2 | 164.2 | 107.0 | 116.1 | 132.2 | 191.8 |
| 2022 | 145.2 | 164.0 | 159.6 | 92.5 | 180.6 | 188.8 | 176.8 | 111.9 | 128.1 | 133.6 | 342.2 |
| 2023 ^P | 143.7 | 174.2 | 166.3 | 93.1 | 164.7 | 133.0 | 177.8 | 111.6 | 137.6 | 135.0 | 547.6 |
| 2022 | | | | | | | | | | | |
| MEI | MAY | 148.6 | 162.8 | 157.8 | 93.1 | 184.4 | 232.4 | 178.0 | 113.1 | 126.9 | 348.6 |
| JUN | JUN | 149.1 | 163.7 | 158.0 | 92.9 | 184.0 | 226.6 | 178.5 | 112.9 | 128.7 | 382.5 |
| JUL | JUL | 151.5 | 164.7 | 159.8 | 93.4 | 196.7 | 223.4 | 178.5 | 112.6 | 129.8 | 333.6 |
| OGOS | AUG | 148.3 | 166.0 | 159.8 | 93.6 | 193.7 | 182.2 | 178.0 | 112.0 | 129.9 | 378.9 |
| SEP | SEP | 149.8 | 166.2 | 161.9 | 93.5 | 206.4 | 162.7 | 178.3 | 111.7 | 131.4 | 361.4 |
| OKT | OCT | 149.7 | 167.0 | 162.3 | 92.9 | 199.4 | 154.1 | 178.7 | 112.1 | 135.2 | 422.2 |
| NOV | NOV | 148.7 | 168.2 | 163.0 | 91.6 | 198.3 | 143.6 | 178.8 | 112.3 | 135.1 | 398.7 |
| DIS | DEC | 144.5 | 168.5 | 163.1 | 91.2 | 181.3 | 140.9 | 177.7 | 111.4 | 133.3 | 439.5 |
| 2023 | | | | | | | | | | | |
| JAN | JAN | 142.7 | 168.6 | 163.9 | 91.3 | 170.8 | 141.3 | 177.1 | 111.6 | 133.8 | 372.4 |
| FEB | FEB | 141.2 | 168.8 | 164.4 | 90.5 | 164.6 | 137.4 | 176.7 | 111.1 | 133.3 | 437.1 |
| MAC | MAR | 142.6 | 170.6 | 164.6 | 91.3 | 161.7 | 141.8 | 178.5 | 111.4 | 135.2 | 583.5 |
| APR | APR | 141.9 | 171.6 | 164.9 | 92.1 | 154.7 | 141.3 | 178.3 | 111.0 | 136.9 | 540.1 |
| MEI | MAY | 141.7 | 172.6 | 165.8 | 92.7 | 154.6 | 138.6 | 178.4 | 111.8 | 137.1 | 462.4 |
| JUN | JUN | 141.8 | 175.1 | 166.2 | 93.9 | 150.0 | 133.2 | 178.3 | 112.3 | 138.8 | 577.1 |
| JUL | JUL | 141.6 | 175.2 | 166.8 | 94.7 | 149.7 | 127.5 | 177.3 | 112.2 | 139.7 | 496.9 |
| OGOS | AUG | 142.3 | 175.6 | 166.9 | 94.1 | 157.2 | 127.0 | 176.2 | 111.6 | 138.6 | 548.3 |
| SEP | SEP | 144.6 | 176.4 | 167.3 | 93.4 | 162.8 | 130.2 | 178.1 | 111.4 | 140.0 | 614.9 |
| OKT | OCT | 146.4 | 177.3 | 167.7 | 93.4 | 172.4 | 128.6 | 178.7 | 111.9 | 139.9 | 666.7 |
| NOV | NOV | 149.3 | 178.2 | 167.9 | 94.4 | 191.3 | 126.7 | 178.7 | 111.4 | 139.3 | 668.3 |
| DIS | DEC | 148.0 | 179.9 | 168.7 | 94.7 | 186.7 | 122.2 | 177.9 | 110.9 | 139.2 | 603.0 |
| 2024 | | | | | | | | | | | |
| JAN | JAN | 147.2 | 181.8 | 169.4 | 95.2 | 181.5 | 123.9 | 178.6 | 110.7 | 139.0 | 572.0 |
| FEB | FEB | 147.3 | 184.9 | 170.8 | 95.9 | 175.7 | 124.4 | 180.4 | 111.4 | 139.9 | 665.0 |
| MAC | MAR | 149.8 | 186.4 | 171.4 | 96.6 | 184.0 | 128.8 | 181.3 | 111.4 | 140.7 | 719.2 |
| APR | APR | 149.2 | 188.3 | 174.1 | 97.3 | 178.9 | 133.3 | 181.2 | 111.5 | 140.1 | 770.6 |
| MEI ^P | MAY ^P | 150.3 | 190.1 | 176.3 | 98.7 | 181.6 | 133.4 | 182.1 | 111.2 | 140.5 | 843.3 |

MALAYSIA

JADUAL 1B : PERATUS PERUBAHAN BULAN KE BULAN INDEKS NILAI SEUNIT BAGI EKSPORT (2010=100) MENGIKUT SEKSYEN BARANGAN (S.I.T.C.)

TABLE 1B : MONTH-ON-MONTH PERCENTAGE CHANGE EXPORT UNIT VALUE INDICES (2010=100) BY COMMODITY SECTIONS (S.I.T.C.)

| TEMPOH PERIOD | JUMLAH TOTAL | 0 MAKANAN FOOD | 1 MINUMAN DAN TEBAKAU BEVERAGES AND TOBACCO | 2 BAHAN-BAHAN MENTAH TIDAK BOLEH DIMAKAN CRUDE MATERIALS, INEDIBLE | 3 BAHAN API GALIAN, PELINCIR, DLL. MINERAL FUELS, LUBRICANTS, ETC. | 4 MINYAK DAN LEMAK BINATANG DAN SAYUR- SAYURAN ANIMAL AND VEGETABLE OILS AND FATS | 5 BAHAN KIMIA CHEMICALS | 6 BARANG- BARANG KELUARAN KILANG MANUFACTURED GOODS | 7 JENTERA & KELENGKAPAN PENGANGKUTAN MACHINERY & TRANSPORT EQUIPMENT | 8 PELBAGAI BARANG KELUARAN KILANG MISCELLANEOUS MANUFACTURED ARTICLES | 9 PELBAGAI URUS NIAGA DAN BARANGAN MISCELLANEOUS TRANSACTIONS AND COMMODITIES | |
|-------------------|------------------|----------------------|--|---|--|---|-------------------------------|---|--|--|---|-------|
| WAJARAN / WEIGHTS | 100.0 | 3.5 | 0.6 | 2.7 | 16.1 | 6.0 | 7.8 | 9.7 | 42.3 | 10.9 | 0.4 | |
| 2022 | | | | | | | | | | | | |
| MEI | MAY | 3.9 | 1.1 | 0.0 | 0.9 | 9.6 | 6.0 | 0.8 | 0.6 | 2.4 | 0.8 | 23.2 |
| JUN | JUN | 0.3 | 0.5 | 0.2 | -0.2 | -0.2 | -2.5 | 0.3 | -0.2 | 1.4 | 0.4 | 9.7 |
| JUL | JUL | 1.6 | 0.6 | 1.1 | 0.4 | 6.9 | -1.4 | 0.0 | -0.2 | 0.8 | 0.4 | -12.8 |
| OGOS | AUG | -2.2 | 0.8 | 0.0 | 0.2 | -1.5 | -18.4 | -0.3 | -0.6 | 0.1 | 0.0 | 13.6 |
| SEP | SEP | 1.0 | 0.1 | 1.3 | -0.1 | 6.6 | -10.7 | 0.2 | -0.3 | 1.1 | 0.2 | -4.6 |
| OKT | OCT | 0.0 | 0.5 | 0.2 | -0.6 | -3.4 | -5.3 | 0.2 | 0.3 | 2.9 | -0.4 | 16.8 |
| NOV | NOV | -0.7 | 0.7 | 0.4 | -1.5 | -0.6 | -6.8 | 0.1 | 0.2 | -0.1 | 0.2 | -5.6 |
| DIS | DEC | -2.8 | 0.2 | 0.1 | -0.4 | -8.6 | -1.9 | -0.6 | -0.8 | -1.3 | -1.1 | 10.2 |
| 2023 | | | | | | | | | | | | |
| JAN | JAN | -1.3 | 0.1 | 0.5 | 0.1 | -5.8 | 0.3 | -0.3 | 0.2 | 0.4 | -0.2 | -15.3 |
| FEB | FEB | -1.1 | 0.1 | 0.3 | -0.8 | -3.6 | -2.7 | -0.2 | -0.5 | -0.4 | -0.2 | 17.4 |
| MAC | MAR | 1.0 | 1.1 | 0.1 | 0.8 | -1.8 | 3.2 | 1.1 | 0.3 | 1.5 | 0.8 | 33.5 |
| APR | APR | -0.5 | 0.6 | 0.2 | 0.9 | -4.3 | -0.3 | -0.1 | -0.3 | 1.2 | 0.4 | -7.4 |
| MEI | MAY | -0.2 | 0.6 | 0.6 | 0.7 | -0.1 | -1.9 | 0.1 | 0.7 | 0.2 | -0.1 | -14.4 |
| JUN | JUN | 0.1 | 1.4 | 0.3 | 1.3 | -3.0 | -3.9 | -0.1 | 0.4 | 1.2 | 0.7 | 24.8 |
| JUL | JUL | -0.1 | 0.0 | 0.4 | 0.9 | -0.2 | -4.2 | -0.6 | 0.0 | 0.7 | 1.4 | -13.9 |
| OGOS | AUG | 0.5 | 0.3 | 0.1 | -0.7 | 5.0 | -0.4 | -0.6 | -0.6 | -0.8 | -1.2 | 10.3 |
| SEP | SEP | 1.6 | 0.4 | 0.2 | -0.8 | 3.6 | 2.6 | 1.1 | -0.2 | 1.0 | 1.1 | 12.2 |
| OKT | OCT | 1.2 | 0.6 | 0.3 | 0.0 | 5.9 | -1.2 | 0.3 | 0.4 | -0.1 | -0.4 | 8.4 |
| NOV | NOV | 2.0 | 0.5 | 0.1 | 1.1 | 11.0 | -1.5 | 0.0 | -0.4 | -0.4 | -0.1 | 0.2 |
| DIS | DEC | -0.9 | 1.0 | 0.5 | 0.3 | -2.4 | -3.6 | -0.4 | -0.5 | -0.1 | 0.4 | -9.8 |
| 2024 | | | | | | | | | | | | |
| JAN | JAN | -0.5 | 1.0 | 0.4 | 0.5 | -2.8 | 1.4 | 0.4 | -0.2 | -0.2 | 0.7 | -5.2 |
| FEB | FEB | 0.1 | 1.7 | 0.8 | 0.7 | -3.2 | 0.4 | 1.0 | 0.7 | 0.7 | 0.7 | 16.3 |
| MAC | MAR | 1.7 | 0.8 | 0.4 | 0.8 | 4.7 | 3.5 | 0.5 | 0.0 | 0.6 | 0.4 | 8.2 |
| APR | APR | -0.4 | 1.0 | 1.6 | 0.7 | -2.8 | 3.5 | -0.1 | 0.1 | -0.5 | 0.4 | 7.1 |
| MEI ^P | MAY ^P | 0.7 | 1.0 | 1.2 | 1.5 | 1.5 | 0.1 | 0.5 | -0.2 | 0.3 | 0.3 | 9.4 |

MALAYSIA

JADUAL 1C : PERATUS PERUBAHAN TAHUN KE TAHUN INDEKS NILAI SEUNIT BAGI EKSPORT (2010=100) MENGIKUT SEKSYEN BARANGAN (S.I.T.C.)

TABLE 1C : YEAR-ON-YEAR PERCENTAGE CHANGE EXPORT UNIT VALUE INDICES (2010=100) BY COMMODITY SECTION (S.I.T.C.)

| TEMPOH PERIOD | JUMLAH TOTAL | 0 MAKANAN FOOD | 1 MINUMAN DAN TEBAKAU BEVERAGES AND TOBACCO | 2 BAHAN-BAHAN MENTAH TIDAK BOLEH DIMAKAN CRUDE MATERIALS, INEDIBLE | 3 BAHAN API GALIAN, PELINCIR, DLL. MINERAL FUELS, LUBRICANTS, ETC. | 4 MINYAK DAN LEMAK BINATANG DAN SAYUR- SAYURAN ANIMAL AND VEGETABLE OILS AND FATS | 5 BAHAN KIMIA CHEMICALS | 6 BARANG- BARANG KELUARAN KILANG MANUFACTURED GOODS | 7 JENTERA & KELENGKAPAN PENGANGKUTA N MACHINERY & TRANSPORT EQUIPMENT | 8 PELBAGAI BARANG KELUARAN KILANG MISCELLANEOUS MANUFACTURED ARTICLES | 9 PELBAGAI URUS NIAGA DAN BARANGAN MISCELLANEOUS TRANSACTIONS AND COMMODITIES | |
|-------------------|------------------|----------------------|--|---|--|---|-------------------------------|---|--|--|---|-------|
| WAJARAN / WEIGHTS | 100.0 | 3.5 | 0.6 | 2.7 | 16.1 | 6.0 | 7.8 | 9.7 | 42.3 | 10.9 | 0.4 | |
| 2011 | 11.3 | 10.7 | 0.8 | 25.1 | 30.1 | 27.8 | 12.7 | 7.9 | 2.0 | 6.0 | 17.7 | |
| 2012 | 1.0 | 1.7 | 0.7 | -13.2 | 8.9 | -11.0 | -1.6 | -8.3 | 3.0 | 1.6 | 25.6 | |
| 2013 | -1.7 | 1.3 | 0.6 | -12.7 | -1.2 | -15.4 | -0.9 | -2.9 | 0.6 | 1.9 | 0.8 | |
| 2014 | 1.2 | 2.7 | 1.6 | -10.6 | 1.5 | 5.8 | 5.9 | 0.7 | 0.0 | 1.8 | 1.9 | |
| 2015 | -4.2 | 4.9 | 4.8 | -3.1 | -29.7 | -8.5 | 8.9 | 3.5 | 3.2 | 4.3 | -2.7 | |
| 2016 | -2.0 | 5.6 | 6.5 | -2.6 | -24.7 | 7.7 | 5.5 | -0.5 | 0.6 | 3.3 | 16.7 | |
| 2017 | 7.2 | 6.9 | 7.6 | 14.2 | 27.8 | 13.3 | 11.5 | 4.8 | 1.2 | 3.2 | 12.3 | |
| 2018 | 1.6 | 3.2 | 6.6 | -6.9 | 16.4 | -14.6 | 3.9 | 1.4 | -0.8 | 1.6 | 2.2 | |
| 2019 | 0.8 | 2.5 | 7.5 | -0.7 | 0.1 | -9.7 | -0.7 | -2.8 | 2.5 | 2.2 | -5.1 | |
| 2020 | -2.5 | 3.4 | 3.5 | -0.6 | -24.9 | 22.5 | 0.5 | -1.1 | 1.1 | 0.7 | -8.2 | |
| 2021 | 10.2 | 3.8 | 3.5 | 7.2 | 34.2 | 48.1 | 6.3 | 5.1 | 1.8 | 1.8 | 11.4 | |
| 2022 | 17.2 | 4.3 | 4.4 | 2.9 | 60.0 | 18.6 | 7.7 | 4.5 | 10.3 | 1.0 | 78.4 | |
| 2023 ^P | -1.1 | 6.2 | 4.2 | 0.6 | -8.8 | -29.6 | 0.6 | -0.3 | 7.5 | 1.0 | 60.0 | |
| 2022 | | | | | | | | | | | | |
| MEI | MAY | 22.2 | 3.6 | 3.8 | 3.5 | 79.0 | 46.6 | 9.2 | 6.2 | 10.1 | 0.7 | 89.4 |
| JUN | JUN | 20.3 | 3.8 | 3.7 | 2.9 | 66.5 | 38.1 | 9.1 | 5.1 | 10.8 | 1.1 | 103.9 |
| JUL | JUL | 20.6 | 4.2 | 4.8 | 3.0 | 66.8 | 39.9 | 8.8 | 4.4 | 10.4 | 1.4 | 76.2 |
| OGOS | AUG | 16.4 | 4.9 | 4.1 | 2.8 | 56.0 | 12.6 | 7.5 | 3.0 | 9.9 | 1.1 | 93.6 |
| SEP | SEP | 17.8 | 5.0 | 5.0 | 2.6 | 68.2 | -2.6 | 7.3 | 2.9 | 12.0 | 1.5 | 85.0 |
| OKT | OCT | 16.1 | 5.4 | 5.0 | 2.1 | 53.0 | -10.7 | 6.5 | 3.1 | 15.5 | 1.4 | 107.6 |
| NOV | NOV | 13.9 | 6.0 | 4.7 | 0.5 | 44.3 | -17.7 | 5.7 | 3.5 | 14.9 | 1.6 | 91.5 |
| DIS | DEC | 10.5 | 5.7 | 4.1 | -0.5 | 36.2 | -21.9 | 4.2 | 2.1 | 12.5 | 0.4 | 89.9 |
| 2023 | | | | | | | | | | | | |
| JAN | JAN | 7.6 | 5.7 | 4.5 | -0.4 | 25.7 | -24.3 | 3.1 | 1.4 | 11.5 | 0.3 | 62.1 |
| FEB | FEB | 4.3 | 5.4 | 4.7 | -1.3 | 12.2 | -27.9 | 2.3 | 0.3 | 10.3 | 0.4 | 80.3 |
| MAC | MAR | 0.7 | 6.4 | 4.5 | -0.9 | -5.9 | -30.4 | 2.3 | 0.0 | 10.7 | 1.3 | 104.5 |
| APR | APR | -0.8 | 6.6 | 4.5 | -0.2 | -8.0 | -35.5 | 1.0 | -1.3 | 10.5 | 1.3 | 90.9 |
| MEI | MAY | -4.7 | 6.0 | 5.1 | -0.4 | -16.2 | -40.4 | 0.2 | -1.1 | 8.0 | 0.3 | 32.6 |
| JUN | JUN | -4.9 | 7.0 | 5.2 | 1.1 | -18.5 | -41.2 | -0.1 | -0.5 | 7.8 | 0.6 | 50.9 |
| JUL | JUL | -6.5 | 6.4 | 4.4 | 1.5 | -23.9 | -42.9 | -0.7 | -0.4 | 7.6 | 1.6 | 49.0 |
| OGOS | AUG | -4.0 | 5.8 | 4.4 | 0.6 | -18.9 | -30.3 | -1.0 | -0.4 | 6.7 | 0.4 | 44.7 |
| SEP | SEP | -3.5 | 6.1 | 3.3 | -0.1 | -21.2 | -20.0 | -0.1 | -0.3 | 6.6 | 1.3 | 70.1 |
| OKT | OCT | -2.2 | 6.2 | 3.4 | 0.5 | -13.6 | -16.5 | 0.0 | -0.2 | 3.5 | 1.3 | 57.9 |
| NOV | NOV | 0.4 | 5.9 | 3.0 | 3.1 | -3.5 | -11.8 | -0.1 | -0.8 | 3.1 | 1.0 | 67.6 |
| DIS | DEC | 2.4 | 6.8 | 3.4 | 3.9 | 3.0 | -13.3 | 0.1 | -0.4 | 4.5 | 2.5 | 37.2 |
| 2024 | | | | | | | | | | | | |
| JAN | JAN | 3.1 | 7.8 | 3.4 | 4.3 | 6.3 | -12.3 | 0.9 | -0.9 | 3.8 | 3.5 | 53.6 |
| FEB | FEB | 4.3 | 9.6 | 3.9 | 5.9 | 6.7 | -9.5 | 2.1 | 0.3 | 5.0 | 4.4 | 52.1 |
| MAC | MAR | 5.1 | 9.3 | 4.1 | 5.9 | 13.8 | -9.2 | 1.6 | 0.0 | 4.1 | 4.0 | 23.3 |
| APR | APR | 5.1 | 9.7 | 5.6 | 5.7 | 15.6 | -5.7 | 1.6 | 0.4 | 2.3 | 4.1 | 42.7 |
| MEI ^P | MAY ^P | 6.1 | 10.1 | 6.3 | 6.4 | 17.5 | -3.7 | 2.1 | -0.5 | 2.4 | 4.4 | 82.4 |

MALAYSIA
JADUAL 2A : INDEKS VOLUM BAGI EKSPORT (2010=100) MENGIKUT SEKSYEN BARANGAN (S.I.T.C.)
TABLE 2A : EXPORT VOLUME INDICES (2010=100) BY COMMODITY SECTION (S.I.T.C.)

| TEPOH PERIOD | JUMLAH TOTAL | 0 MAKANAN FOOD | 1 MINUMAN DAN TEBAKAU BEVERAGES AND TOBACCO | 2 BAHAN-BAHAN MENTAH TIDAK BOLEH DIMAKAN CRUDE MATERIALS, INEDIBLE | 3 BAHAN API GALIAN, PELINCIR, DLL. MINERAL FUELS, LUBRICANTS, ETC. | 4 MINYAK DAN LEMAK BINATANG DAN SAYUR- SAYURAN ANIMAL AND VEGETABLE OILS AND FATS | 5 BAHAN KIMIA CHEMICALS | 6 BARANG- BARANG KELUARAN KILANG MANUFACTURED GOODS | 7 JENTERA & KELENGKAPAN PENGANGKUTAN MACHINERY & TRANSPORT EQUIPMENT | 8 PELBAGAI BARANG KELUARAN KILANG MISCELLANEOUS MANUFACTURED ARTICLES | 9 PELBAGAI URUS NIAGA DAN BARANGAN MISCELLANEOUS TRANSACTIONS AND COMMODITIES | | |
|-------------------|------------------|----------------------|--|---|--|---|-------------------------------|---|--|--|---|-------|------|
| 2010 | 100.0 | 100.0 | 100.0 | 100.0 | 100.0 | 100.0 | 100.0 | 100.0 | 100.0 | 100.0 | 100.0 | | |
| 2011 | 98.1 | 102.1 | 110.4 | 104.6 | 95.4 | 106.2 | 101.1 | 107.4 | 94.3 | 99.4 | 97.5 | | |
| 2012 | 97.9 | 101.2 | 130.4 | 99.6 | 99.7 | 103.9 | 102.5 | 114.0 | 90.5 | 103.9 | 114.8 | | |
| 2013 | 102.0 | 106.7 | 135.0 | 107.7 | 112.1 | 94.0 | 116.1 | 125.0 | 92.3 | 99.9 | 90.3 | | |
| 2014 | 107.4 | 120.5 | 139.7 | 106.1 | 116.9 | 92.1 | 119.9 | 124.3 | 100.1 | 107.4 | 87.5 | | |
| 2015 | 114.2 | 122.4 | 150.2 | 135.4 | 126.0 | 95.5 | 117.9 | 132.8 | 106.6 | 117.4 | 75.7 | | |
| 2016 | 117.2 | 128.1 | 150.6 | 147.2 | 143.4 | 93.0 | 118.9 | 124.6 | 110.2 | 120.4 | 84.4 | | |
| 2017 | 130.2 | 126.4 | 126.4 | 163.8 | 145.8 | 91.8 | 124.2 | 141.1 | 128.7 | 137.1 | 133.4 | | |
| 2018 | 137.4 | 101.8 | 95.5 | 157.1 | 137.8 | 89.5 | 134.9 | 155.1 | 142.5 | 144.6 | 107.0 | | |
| 2019 | 135.2 | 103.9 | 86.0 | 167.6 | 125.8 | 98.7 | 136.1 | 165.1 | 137.1 | 150.5 | 96.3 | | |
| 2020 | 137.2 | 99.3 | 62.4 | 154.3 | 130.7 | 94.6 | 119.4 | 154.0 | 138.9 | 181.3 | 52.2 | | |
| 2021 | 156.7 | 109.6 | 58.0 | 168.2 | 134.8 | 90.7 | 160.9 | 210.8 | 160.2 | 216.9 | 58.8 | | |
| 2022 | 167.0 | 121.2 | 61.3 | 176.7 | 141.5 | 100.4 | 175.0 | 219.9 | 187.0 | 198.3 | 57.8 | | |
| 2023 ^P | 155.5 | 118.8 | 66.5 | 166.6 | 140.5 | 103.5 | 147.8 | 202.8 | 168.4 | 173.4 | 52.4 | | |
| 2022 | MEI | MAY | 152.5 | 108.6 | 52.2 | 138.8 | 131.7 | 88.1 | 168.0 | 203.6 | 173.7 | 178.0 | 53.6 |
| | JUN | JUN | 181.9 | 125.3 | 50.7 | 172.1 | 174.8 | 108.5 | 182.9 | 230.1 | 197.4 | 234.3 | 52.5 |
| | JUL | JUL | 166.7 | 123.5 | 56.9 | 200.5 | 169.7 | 87.7 | 174.2 | 220.2 | 177.6 | 198.1 | 46.2 |
| | OGOS | AUG | 179.5 | 128.2 | 65.8 | 186.2 | 182.8 | 103.8 | 172.1 | 219.5 | 192.3 | 218.6 | 52.2 |
| | SEP | SEP | 181.1 | 122.4 | 58.5 | 175.3 | 155.3 | 118.4 | 176.1 | 214.5 | 209.8 | 215.5 | 47.8 |
| | OKT | OCT | 165.8 | 123.2 | 62.9 | 150.1 | 168.3 | 99.9 | 165.8 | 201.2 | 179.9 | 177.1 | 50.2 |
| | NOV | NOV | 164.0 | 128.3 | 77.4 | 168.0 | 128.5 | 110.5 | 170.8 | 194.9 | 189.1 | 191.2 | 59.3 |
| | DIS | DEC | 171.2 | 128.4 | 75.7 | 172.6 | 130.0 | 147.5 | 166.3 | 207.5 | 193.4 | 199.9 | 54.5 |
| 2023 | JAN | JAN | 148.5 | 97.7 | 62.0 | 164.9 | 144.1 | 87.8 | 141.4 | 166.0 | 167.1 | 153.1 | 62.6 |
| | FEB | FEB | 149.6 | 112.2 | 57.5 | 162.6 | 145.3 | 90.8 | 151.1 | 193.2 | 160.1 | 158.8 | 43.0 |
| | MAC | MAR | 171.1 | 126.8 | 84.4 | 186.7 | 156.0 | 119.5 | 164.7 | 219.0 | 183.0 | 195.9 | 60.8 |
| | APR | APR | 139.4 | 101.4 | 59.4 | 132.6 | 129.2 | 91.4 | 125.7 | 195.4 | 153.2 | 138.7 | 48.9 |
| | MEI | MAY | 158.6 | 120.8 | 69.5 | 166.0 | 167.2 | 92.3 | 152.6 | 198.4 | 165.4 | 172.8 | 58.8 |
| | JUN | JUN | 164.4 | 117.7 | 62.0 | 175.6 | 143.2 | 94.8 | 138.0 | 219.4 | 186.2 | 177.3 | 54.4 |
| | JUL | JUL | 155.1 | 117.4 | 63.0 | 182.1 | 123.4 | 101.5 | 144.3 | 203.9 | 172.2 | 176.7 | 37.3 |
| | OGOS | AUG | 152.0 | 121.4 | 66.9 | 160.3 | 148.7 | 101.5 | 149.9 | 210.2 | 153.5 | 178.9 | 49.6 |
| | SEP | SEP | 161.7 | 124.1 | 66.3 | 150.4 | 128.2 | 108.6 | 149.2 | 197.2 | 185.7 | 183.7 | 47.0 |
| | OKT | OCT | 162.1 | 129.7 | 64.6 | 171.3 | 146.5 | 122.2 | 156.0 | 205.9 | 172.3 | 185.9 | 56.1 |
| | NOV | NOV | 153.3 | 133.6 | 69.9 | 180.6 | 137.1 | 114.6 | 153.2 | 212.6 | 159.5 | 176.7 | 51.1 |
| | DIS | DEC | 150.5 | 122.8 | 72.6 | 166.3 | 116.7 | 117.1 | 147.1 | 212.7 | 162.8 | 182.0 | 59.0 |
| 2024 | JAN | JAN | 156.4 | 119.0 | 74.8 | 159.3 | 152.2 | 117.1 | 151.1 | 233.0 | 156.8 | 180.5 | 54.0 |
| | FEB | FEB | 142.2 | 112.7 | 59.0 | 145.8 | 137.7 | 91.3 | 145.1 | 216.5 | 142.4 | 168.1 | 40.3 |
| | MAC | MAR | 161.5 | 125.9 | 66.5 | 191.4 | 129.2 | 101.4 | 152.0 | 235.4 | 177.2 | 200.1 | 41.4 |
| | APR | APR | 144.6 | 108.6 | 54.0 | 168.4 | 108.3 | 107.3 | 148.1 | 223.8 | 155.7 | 174.0 | 50.1 |
| | MEI ^P | MAY ^P | 160.5 | 128.5 | 60.6 | 170.8 | 116.4 | 117.2 | 158.6 | 244.8 | 174.1 | 210.9 | 42.2 |

6

MALAYSIA
JADUAL 2B : PERATUS PERUBAHAN BULAN KE BULAN INDEKS VOLUM BAGI EKSPORT (2010=100) MENGIKUT SEKSYEN BARANGAN (S.I.T.C.)
TABLE 2B : MONTH-ON-MONTH PERCENTAGE CHANGE EXPORT VOLUME INDICES (2010=100) BY COMMODITY SECTION (S.I.T.C.)

| TEMPOH PERIOD | JUMLAH TOTAL | 0 MAKANAN FOOD | 1 MINUMAN DAN TEBKAU BEVERAGES AND TOBACCO | 2 BAHAN-BAHAN MENTAH TIDAK BOLEH DIMAKAN CRUDE MATERIALS, INEDIBLE | 3 BAHAN API GALIAN, PELINCIR, DLL. MINERAL FUELS, LUBRICANTS, ETC. | 4 MINYAK DAN LEMAK BINATANG DAN SAYUR- SAYURAN ANIMAL AND VEGETABLE OILS AND FATS | 5 BAHAN KIMIA CHEMICALS | 6 BARANG-BARANG KELUARAN KILANG MANUFACTURED GOODS | 7 JENTERA & KELENGKAPAN PENGANGKUTAN MACHINERY & TRANSPORT EQUIPMENT | 8 PELBAGAI BARANG KELUARAN KILANG MISCELLANEOUS MANUFACTURED ARTICLES | 9 PELBAGAI URUS NIAGA DAN BARANGAN MISCELLANEOUS TRANSACTIONS AND COMMODITIES | | |
|------------------|------------------------|----------------------|---|---|--|---|-------------------------------|---|--|--|---|-------|-------|
| 2022 | MEI | MAY | -9.0 | -14.4 | -21.9 | -36.1 | 10.3 | 4.6 | -15.0 | -25.6 | -6.7 | -14.4 | -17.9 |
| | JUN | JUN | 19.3 | 15.3 | -3.0 | 23.9 | 32.8 | 23.1 | 8.9 | 13.0 | 13.6 | 31.6 | -2.0 |
| | JUL | JUL | -8.4 | -1.4 | 12.3 | 16.5 | -2.9 | -19.2 | -4.7 | -4.3 | -10.1 | -15.5 | -12.0 |
| | OGOS | AUG | 7.7 | 3.8 | 15.7 | -7.1 | 7.7 | 18.4 | -1.2 | -0.3 | 8.3 | 10.3 | 12.9 |
| | SEP | SEP | 0.9 | -4.5 | -11.2 | -5.8 | -15.0 | 14.0 | 2.3 | -2.3 | 9.1 | -1.4 | -8.4 |
| | OKT | OCT | -8.5 | 0.6 | 7.6 | -14.4 | 8.4 | -15.6 | -5.8 | -6.2 | -14.3 | -17.8 | 5.1 |
| | NOV | NOV | -1.1 | 4.2 | 23.0 | 12.0 | -23.7 | 10.6 | 3.0 | -3.1 | 5.1 | 7.9 | 18.1 |
| | DIS | DEC | 4.4 | 0.1 | -2.1 | 2.7 | 1.1 | 33.5 | -2.6 | 6.5 | 2.3 | 4.6 | -8.2 |
| 2023 | JAN | JAN | -13.3 | -23.9 | -18.1 | -4.4 | 10.9 | -40.4 | -15.0 | -20.0 | -13.6 | -23.4 | 14.9 |
| | FEB | FEB | 0.7 | 14.8 | -7.3 | -1.4 | 0.8 | 3.4 | 6.9 | 16.4 | -4.2 | 3.7 | -31.3 |
| | MAC | MAR | 14.4 | 13.0 | 46.9 | 14.8 | 7.4 | 31.7 | 9.0 | 13.4 | 14.3 | 23.3 | 41.6 |
| | APR | APR | -18.5 | -20.1 | -29.6 | -29.0 | -17.2 | -23.5 | -23.7 | -10.8 | -16.3 | -29.2 | -19.7 |
| | MEI | MAY | 13.8 | 19.2 | 17.0 | 25.2 | 29.5 | 0.9 | 21.4 | 1.5 | 7.9 | 24.6 | 20.4 |
| | JUN | JUN | 3.7 | -2.5 | -10.9 | 5.8 | -14.4 | 2.7 | -9.5 | 10.6 | 12.6 | 2.6 | -7.5 |
| | JUL | JUL | -5.7 | -0.3 | 1.7 | 3.7 | -13.9 | 7.0 | 4.6 | -7.0 | -7.5 | -0.4 | -31.4 |
| | OGOS | AUG | -2.0 | 3.4 | 6.2 | -12.0 | 20.6 | 0.0 | 3.9 | 3.1 | -10.9 | 1.3 | 33.0 |
| | SEP | SEP | 6.4 | 2.2 | -0.9 | -6.2 | -13.8 | 7.0 | -0.5 | -6.2 | 21.0 | 2.7 | -5.4 |
| | OKT | OCT | 0.2 | 4.5 | -2.6 | 13.9 | 14.3 | 12.6 | 4.5 | 4.4 | -7.2 | 1.2 | 19.5 |
| | NOV | NOV | -5.4 | 3.0 | 8.3 | 5.4 | -6.4 | -6.2 | -1.8 | 3.3 | -7.4 | -5.0 | -8.9 |
| | DIS | DEC | -1.9 | -8.1 | 3.8 | -7.9 | -14.9 | 2.1 | -4.0 | 0.0 | 2.1 | 3.0 | 15.4 |
| 2024 | JAN | JAN | 4.0 | -3.1 | 3.1 | -4.2 | 30.4 | 0.0 | 2.7 | 9.6 | -3.7 | -0.8 | -8.6 |
| | FEB | FEB | -9.1 | -5.3 | -21.2 | -8.5 | -9.6 | -22.1 | -4.0 | -7.1 | -9.2 | -6.9 | -25.3 |
| | MAC | MAR | 13.5 | 11.7 | 12.8 | 31.3 | -6.2 | 11.0 | 4.8 | 8.7 | 24.4 | 19.0 | 2.7 |
| | APR | APR | -10.5 | -13.8 | -18.9 | -12.0 | -16.2 | 5.9 | -2.6 | -4.9 | -12.1 | -13.1 | 20.9 |
| | MEI^P | MAY ^P | 11.0 | 18.3 | 12.3 | 1.4 | 7.5 | 9.2 | 7.1 | 9.4 | 11.9 | 21.2 | -15.6 |

MALAYSIA
JADUAL 2C : PERATUS PERUBAHAN TAHUN KE TAHUN INDEKS VOLUM BAGI EKSPORT (2010=100) MENGIKUT SEKSYEN BARANGAN (S.I.T.C.)
TABLE 2C : YEAR-ON-YEAR PERCENTAGE CHANGE EXPORT VOLUME INDICES (2010=100) BY COMMODITY SECTION (S.I.T.C.)

| TEMPOH PERIOD | JUMLAH TOTAL | 0 MAKANAN FOOD | 1 MINUMAN DAN TEBAKAU BEVERAGES AND TOBACCO | 2 BAHAN-BAHAN MENTAH TIDAK BOLEH DIMAKAN CRUDE MATERIALS, INEDIBLE | 3 BAHAN API GALIAN, PELINCIR, DLL. MINERAL FUELS, LUBRICANTS, ETC. | 4 MINYAK DAN LEMAK BINATANG DAN SAYUR- SAYURAN ANIMAL AND VEGETABLE OILS AND FATS | 5 BAHAN KIMIA CHEMICALS | 6 BARANG-BARANG KELUARAN KILANG MANUFACTURED GOODS | 7 JENTERA & KELENGKAPAN PENGANGKUTAN MACHINERY & TRANSPORT EQUIPMENT | 8 PELBAGAI BARANG KELUARAN KILANG MISCELLANEOUS TRANSPORT MANUFACTURED ARTICLES | 9 PELBAGAI URUS NIAGA DAN BARANGAN MISCELLANEOUS TRANSACTIONS AND COMMODITIES | | |
|-------------------|------------------|----------------------|--|---|--|---|-------------------------------|--|--|---|---|-------|-------|
| 2011 | -1.9 | 2.1 | 10.4 | 4.6 | -4.6 | 6.2 | 1.1 | 7.4 | -5.7 | -0.6 | -2.5 | | |
| 2012 | -0.2 | -0.9 | 18.2 | -4.7 | 4.5 | -2.2 | 1.3 | 6.1 | -4.0 | 4.5 | 17.8 | | |
| 2013 | 4.2 | 5.5 | 3.5 | 8.1 | 12.5 | -9.5 | 13.3 | 9.6 | 2.0 | -3.9 | -21.3 | | |
| 2014 | 5.3 | 13.0 | 3.5 | -1.5 | 4.3 | -2.0 | 3.3 | -0.5 | 8.5 | 7.5 | -3.1 | | |
| 2015 | 6.3 | 1.6 | 7.5 | 27.6 | 7.8 | 3.7 | -1.6 | 6.8 | 6.4 | 9.3 | -13.5 | | |
| 2016 | 2.6 | 4.6 | 0.3 | 8.7 | 13.8 | -2.6 | 0.8 | -6.2 | 3.4 | 2.5 | 11.6 | | |
| 2017 | 11.1 | -1.3 | -16.1 | 11.3 | 1.7 | -1.3 | 4.5 | 13.2 | 16.8 | 13.9 | 58.0 | | |
| 2018 | 5.5 | -19.5 | -24.5 | -4.1 | -5.4 | -2.6 | 8.6 | 10.0 | 10.8 | 5.4 | -19.8 | | |
| 2019 | -1.6 | 2.1 | -9.9 | 6.6 | -8.8 | 10.4 | 0.9 | 6.4 | -3.8 | 4.1 | -10.0 | | |
| 2020 | 1.5 | -4.4 | -27.5 | -7.9 | 3.9 | -4.2 | -12.3 | -6.7 | 1.3 | 20.5 | -45.8 | | |
| 2021 | 14.2 | 10.4 | -7.0 | 9.0 | 3.2 | -4.1 | 34.7 | 36.9 | 15.3 | 19.6 | 12.8 | | |
| 2022 | 6.6 | 10.5 | 5.6 | 5.0 | 5.0 | 10.7 | 8.8 | 4.3 | 16.8 | -8.6 | -1.8 | | |
| 2023 ^P | -6.8 | -2.0 | 8.5 | -5.7 | -0.8 | 3.1 | -15.6 | -7.8 | -10.0 | -12.6 | -9.3 | | |
| 2022 | MEI | MAY | 6.9 | 12.6 | 5.5 | -2.7 | -0.6 | 3.9 | 18.8 | 2.0 | 28.0 | -19.3 | -1.3 |
| | JUN | JUN | 13.9 | 18.0 | 22.1 | 33.6 | 17.8 | 8.9 | -0.3 | 18.3 | 27.0 | -2.4 | -18.0 |
| | JUL | JUL | 14.6 | 16.1 | 50.8 | 53.2 | 10.9 | -9.3 | 11.4 | 28.9 | 23.7 | 6.9 | -15.4 |
| | OGOS | AUG | 27.5 | 16.8 | 16.7 | 3.3 | 51.9 | 30.1 | 9.6 | 12.1 | 35.2 | 20.1 | -1.7 |
| | SEP | SEP | 10.5 | 11.6 | 12.7 | -9.4 | 16.2 | 11.6 | 7.4 | -15.2 | 23.8 | 6.2 | -10.7 |
| | OKT | OCT | -0.7 | 4.9 | 7.0 | -17.1 | 25.5 | 2.8 | -5.5 | -26.5 | 2.0 | -8.8 | -21.6 |
| | NOV | NOV | 1.1 | 5.5 | 22.3 | -3.4 | -1.5 | 5.8 | -1.6 | -19.2 | 11.9 | -6.4 | -8.8 |
| | DIS | DEC | -4.2 | 0.1 | -3.6 | -1.7 | 9.3 | 28.9 | -12.3 | -13.0 | -5.3 | -8.9 | -6.2 |
| 2023 | JAN | JAN | -5.7 | -12.6 | 8.0 | -4.9 | 36.1 | 3.6 | -15.2 | -31.9 | -6.8 | -17.6 | -3.1 |
| | FEB | FEB | 5.8 | 9.8 | 15.7 | 3.0 | 37.7 | 19.8 | -13.1 | -3.1 | 1.8 | -4.0 | -20.6 |
| | MAC | MAR | -2.0 | 1.3 | 37.7 | -10.4 | 23.2 | 24.9 | -11.0 | -4.8 | -12.2 | -5.7 | -34.6 |
| | APR | APR | -16.8 | -20.2 | -11.1 | -39.0 | 8.2 | 8.5 | -36.5 | -28.6 | -17.7 | -33.3 | -25.1 |
| | MEI | MAY | 4.0 | 11.2 | 33.1 | 19.6 | 27.0 | 4.7 | -9.2 | -2.6 | -4.8 | -2.9 | 9.8 |
| | JUN | JUN | -9.6 | -6.0 | 22.3 | 2.0 | -18.1 | -12.6 | -24.5 | -4.7 | -5.7 | -24.3 | 3.6 |
| | JUL | JUL | -6.9 | -4.9 | 10.7 | -9.1 | -27.3 | 15.7 | -17.1 | -7.4 | -3.0 | -10.8 | -19.3 |
| | OGOS | AUG | -15.3 | -5.3 | 1.6 | -13.9 | -18.7 | -2.2 | -12.9 | -4.2 | -20.2 | -18.1 | -4.9 |
| | SEP | SEP | -10.7 | 1.4 | 13.4 | -14.2 | -17.5 | -8.3 | -15.3 | -8.1 | -11.5 | -14.7 | -1.7 |
| | OKT | OCT | -2.2 | 5.3 | 2.6 | 14.2 | -13.0 | 22.3 | -5.9 | 2.3 | -4.2 | 5.0 | 11.8 |
| | NOV | NOV | -6.5 | 4.1 | -9.6 | 7.5 | 6.7 | 3.7 | -10.3 | 9.1 | -15.6 | -7.6 | -13.8 |
| | DIS | DEC | -12.1 | -4.4 | -4.1 | -3.7 | -10.2 | -20.6 | -11.6 | 2.5 | -15.8 | -9.0 | 8.4 |
| 2024 | JAN | JAN | 5.4 | 21.8 | 20.7 | -3.4 | 5.7 | 33.3 | 6.9 | 40.4 | -6.2 | 17.8 | -13.8 |
| | FEB | FEB | -4.9 | 0.5 | 2.6 | -10.4 | -5.2 | 0.5 | -4.0 | 12.1 | -11.0 | 5.8 | -6.2 |
| | MAC | MAR | -5.6 | -0.7 | -21.2 | 2.5 | -17.2 | -15.2 | -7.7 | 7.5 | -3.2 | 2.1 | -31.9 |
| | APR | APR | 3.7 | 7.1 | -9.2 | 27.0 | -16.2 | 17.4 | 17.9 | 14.5 | 1.6 | 25.4 | 2.5 |
| | MEI ^P | MAY ^P | 1.2 | 6.4 | -12.8 | 2.9 | -30.4 | 27.0 | 4.0 | 23.4 | 5.3 | 22.0 | -28.2 |

MALAYSIA
JADUAL 3A : INDEKS NILAI SEUNIT BAGI IMPORT (2010=100) MENGIKUT SEKSYEN BARANGAN (S.I.T.C.)
TABLE 3A : IMPORT UNIT VALUE INDICES (2010=100) BY COMMODITY SECTION (S.I.T.C.)

| TEMPOH PERIOD | JUMLAH TOTAL | 0 MAKANAN FOOD | 1 MINUMAN DAN TEBAKAU BEVERAGES AND TOBACCO | 2 BAHAN-BAHAN MENTAH TIDAK BOLEH DIMAKAN CRUDE MATERIALS, INEDIBLE | 3 BAHAN API GALIAN, PELINCIR, DLL. MINERAL FUELS, LUBRICANTS, ETC. | 4 MINYAK DAN LEMAK BINATANG DAN SAYUR- SAYURAN ANIMAL AND VEGETABLE OILS AND FATS | 5 BAHAN KIMIA CHEMICALS | 6 BARANG- BARANG KELUARAN KILANG MANUFACTURED GOODS | 7 JENTERA & KELENGKAPAN PENGANGKUTAN MACHINERY & TRANSPORT EQUIPMENT | 8 PELBAGAI BARANG KELUARAN KILANG MISCELLANEOUS MANUFACTURED ARTICLES | 9 PELBAGAI URUS NIAGA DAN BARANGAN MISCELLANEOUS TRANSACTIONS AND COMMODITIES | |
|-------------------------|------------------|----------------------|---|---|---|---|-------------------------------|---|--|--|---|-------|
| WAJARAN / WEIGHTS | 100.0 | 6.8 | 0.6 | 3.3 | 12.9 | 1.1 | 10.5 | 13.4 | 41.8 | 7.6 | 2.0 | |
| 2010 | 100.0 | 100.0 | 100.0 | 100.0 | 100.0 | 100.0 | 100.0 | 100.0 | 100.0 | 100.0 | 100.0 | |
| 2011 | 105.5 | 106.7 | 101.5 | 105.4 | 125.6 | 135.4 | 101.8 | 102.1 | 101.8 | 101.5 | 125.7 | |
| 2012 | 106.9 | 109.1 | 100.9 | 102.0 | 130.8 | 110.7 | 102.2 | 102.0 | 103.7 | 102.6 | 138.5 | |
| 2013 | 107.2 | 111.8 | 102.4 | 100.3 | 128.7 | 88.9 | 100.8 | 102.1 | 105.5 | 104.0 | 131.0 | |
| 2014 | 108.3 | 116.0 | 103.3 | 99.4 | 127.0 | 103.7 | 101.1 | 102.0 | 107.3 | 105.1 | 121.0 | |
| 2015 | 107.4 | 119.8 | 103.5 | 100.9 | 93.5 | 97.6 | 103.0 | 102.4 | 111.0 | 106.5 | 136.1 | |
| 2016 | 108.9 | 120.9 | 105.5 | 97.6 | 75.2 | 116.0 | 103.1 | 100.9 | 116.6 | 110.7 | 159.2 | |
| 2017 | 115.5 | 131.7 | 109.3 | 114.0 | 99.6 | 145.8 | 107.3 | 106.0 | 119.0 | 113.2 | 166.7 | |
| 2018 | 117.8 | 135.1 | 112.1 | 107.1 | 121.3 | 125.5 | 110.0 | 107.9 | 118.1 | 112.1 | 156.3 | |
| 2019 | 117.4 | 138.4 | 115.1 | 106.7 | 109.0 | 110.4 | 110.4 | 108.3 | 120.1 | 112.6 | 172.2 | |
| 2020 | 113.9 | 141.6 | 117.0 | 107.2 | 79.6 | 127.1 | 109.7 | 107.9 | 119.0 | 112.5 | 212.7 | |
| 2021 | 118.4 | 144.9 | 118.9 | 118.7 | 100.2 | 188.7 | 112.5 | 112.9 | 117.5 | 112.7 | 218.3 | |
| 2022 | 130.2 | 148.9 | 120.2 | 120.2 | 156.5 | 272.8 | 113.1 | 115.0 | 123.2 | 115.5 | 228.9 | |
| 2023^P | 129.0 | 153.3 | 121.7 | 117.5 | 145.5 | 258.1 | 110.2 | 113.7 | 124.5 | 117.6 | 237.2 | |
| 2022 | | | | | | | | | | | | |
| MEI | MAY | 132.6 | 148.8 | 120.0 | 120.7 | 170.4 | 317.0 | 113.5 | 115.5 | 122.5 | 114.9 | 244.1 |
| JUN | JUN | 134.7 | 148.9 | 120.0 | 121.0 | 183.0 | 297.1 | 113.7 | 115.5 | 124.0 | 115.6 | 240.6 |
| JUL | JUL | 135.1 | 149.4 | 120.2 | 121.1 | 186.4 | 284.9 | 113.1 | 115.3 | 124.8 | 116.1 | 224.8 |
| OGOS | AUG | 132.4 | 149.7 | 120.5 | 121.5 | 167.6 | 273.0 | 112.7 | 115.2 | 124.9 | 115.2 | 221.6 |
| SEP | SEP | 132.5 | 149.7 | 120.7 | 121.3 | 166.1 | 268.0 | 112.5 | 114.8 | 126.1 | 116.5 | 213.1 |
| OKT | OCT | 133.2 | 150.0 | 120.8 | 121.3 | 160.8 | 265.4 | 112.6 | 114.8 | 129.3 | 117.0 | 219.7 |
| NOV | NOV | 133.2 | 150.4 | 120.9 | 120.7 | 165.2 | 264.7 | 112.5 | 114.6 | 127.6 | 117.1 | 228.8 |
| DIS | DEC | 129.5 | 150.8 | 119.8 | 119.4 | 153.8 | 238.2 | 111.6 | 114.2 | 123.9 | 116.6 | 216.6 |
| 2023 | | | | | | | | | | | | |
| JAN | JAN | 128.0 | 151.1 | 119.7 | 118.9 | 143.4 | 239.0 | 111.1 | 114.0 | 123.4 | 116.3 | 232.4 |
| FEB | FEB | 128.7 | 151.2 | 119.8 | 117.7 | 144.9 | 242.1 | 110.4 | 114.1 | 125.0 | 116.6 | 226.0 |
| MAC | MAR | 129.2 | 152.0 | 120.0 | 118.1 | 144.1 | 249.4 | 110.7 | 114.1 | 125.7 | 116.8 | 234.0 |
| APR | APR | 128.2 | 152.4 | 120.2 | 117.7 | 144.3 | 252.9 | 110.3 | 114.0 | 122.5 | 117.3 | 247.0 |
| MEI | MAY | 127.9 | 153.0 | 120.4 | 117.6 | 137.8 | 248.4 | 110.1 | 113.8 | 124.1 | 117.5 | 245.9 |
| JUN | JUN | 128.5 | 153.1 | 120.5 | 117.5 | 135.5 | 252.6 | 110.3 | 113.9 | 126.0 | 117.7 | 246.7 |
| JUL | JUL | 127.6 | 153.6 | 122.9 | 117.6 | 136.9 | 250.8 | 110.1 | 113.9 | 123.4 | 118.0 | 242.6 |
| OGOS | AUG | 128.8 | 154.1 | 123.3 | 116.9 | 146.5 | 274.8 | 109.5 | 113.6 | 123.3 | 117.6 | 235.5 |
| SEP | SEP | 130.6 | 154.4 | 123.4 | 117.0 | 155.0 | 281.6 | 109.8 | 113.5 | 124.8 | 118.0 | 230.2 |
| OKT | OCT | 131.3 | 154.6 | 123.5 | 117.2 | 158.1 | 276.8 | 110.2 | 113.5 | 125.3 | 118.4 | 228.2 |
| NOV | NOV | 130.4 | 154.8 | 123.7 | 117.1 | 153.5 | 268.1 | 110.0 | 113.4 | 126.0 | 118.4 | 237.4 |
| DIS | DEC | 128.7 | 155.0 | 123.5 | 116.6 | 146.6 | 261.3 | 109.4 | 113.2 | 124.2 | 118.4 | 240.2 |
| 2024 | | | | | | | | | | | | |
| JAN | JAN | 128.5 | 155.0 | 123.4 | 116.2 | 142.7 | 268.4 | 109.4 | 113.0 | 124.6 | 118.5 | 254.8 |
| FEB | FEB | 129.9 | 155.1 | 122.8 | 116.5 | 145.6 | 271.8 | 109.1 | 113.1 | 126.6 | 118.8 | 260.0 |
| MAC | MAR | 130.0 | 155.2 | 122.8 | 116.3 | 147.9 | 273.7 | 108.8 | 113.2 | 125.9 | 118.8 | 266.6 |
| APR | APR | 130.9 | 155.2 | 121.9 | 116.4 | 149.5 | 277.5 | 108.5 | 113.2 | 126.8 | 118.4 | 279.5 |
| MEI^P | MAY ^P | 130.9 | 155.3 | 122.4 | 116.7 | 154.5 | 283.9 | 108.3 | 113.2 | 125.2 | 119.4 | 280.6 |

MALAYSIA
JADUAL 3B : PERATUS PERUBAHAN BULAN KE BULAN INDEKS NILAI SEUNIT BAGI IMPORT (2010=100) MENGIKUT SEKSYEN BARANGAN (S.I.T.C.)
TABLE 3B : MONTH-ON-MONTH PERCENTAGE CHANGE IMPORT UNIT VALUE INDICES (2010=100) BY COMMODITY SECTION (S.I.T.C.)

| TEMPOH PERIOD | | JUMLAH TOTAL | 0 MAKANAN FOOD | 1 MINUMAN DAN TEMBAKAU BEVERAGES AND TOBACCO | 2 BAHAN-BAHAN MENTAH TIDAK BOLEH DIMAKAN CRUDE MATERIALS, INEDIBLE | 3 BAHAN API GALIAN, PELINCIR, DLL. MINERAL FUELS, LUBRICANTS, ETC. | 4 MINYAK DAN LEMAK BINATANG DAN SAYUR-SAYURAN ANIMAL AND VEGETABLE OILS AND FATS | 5 BAHAN KIMIA CHEMICALS | 6 BARANG-BARANG KELUARAN KILANG MANUFACTURED GOODS | 7 JENTERA & KELENGKAPAN PENGANGKUTAN MACHINERY & TRANSPORT EQUIPMENT | 8 PELBAGAI BARANG KELUARAN KILANG MISCELLANEOUS MANUFACTURED ARTICLES | 9 PELBAGAI URUS NIAGA DAN BARANGAN MISCELLANEOUS TRANSACTIONS AND COMMODITIES |
|-------------------|-----------------------------------|--------------|----------------|--|--|--|--|-------------------------|--|--|---|---|
| WAJARAN / WEIGHTS | | 100.0 | 6.8 | 0.6 | 3.3 | 12.9 | 1.1 | 10.5 | 13.4 | 41.8 | 7.6 | 2.0 |
| 2022 | MEI MAY | 2.8 | 0.7 | 0.1 | 1.0 | 11.0 | 11.7 | -0.3 | 0.2 | 1.9 | 0.3 | 0.7 |
| | JUN JUN | 1.6 | 0.1 | 0.1 | 0.3 | 7.4 | -6.3 | 0.2 | 0.0 | 1.2 | 0.6 | -1.4 |
| | JUL JUL | 0.3 | 0.3 | 0.1 | 0.0 | 1.9 | -4.1 | -0.5 | -0.2 | 0.6 | 0.4 | -6.6 |
| | OGOS AUG | -1.9 | 0.2 | 0.3 | 0.3 | -10.1 | -4.2 | -0.4 | -0.1 | 0.1 | 0.1 | -1.4 |
| | SEP SEP | 0.0 | 0.0 | 0.1 | -0.2 | -0.9 | -1.8 | -0.2 | -0.4 | 1.0 | 0.3 | -3.8 |
| | OKT OCT | 0.6 | 0.2 | 0.1 | 0.1 | -3.2 | -1.0 | 0.1 | 0.0 | 2.5 | 0.5 | 3.1 |
| | NOV NOV | 0.0 | 0.2 | 0.1 | -0.6 | 2.7 | -0.3 | -0.1 | -0.2 | -1.3 | 0.1 | 4.2 |
| | DIS DEC | -2.8 | 0.2 | -0.9 | -1.0 | -6.9 | -10.0 | -0.8 | -0.3 | -2.9 | -0.4 | -5.3 |
| 2023 | JAN JAN | -1.1 | 0.2 | -0.1 | -0.5 | -6.8 | 0.3 | -0.4 | -0.2 | -0.4 | -0.3 | 7.3 |
| | FEB FEB | 0.6 | 0.1 | 0.0 | -1.0 | 1.1 | 1.3 | -0.6 | 0.1 | 1.4 | 0.3 | -2.7 |
| | MAC MAR | 0.4 | 0.5 | 0.2 | 0.3 | -0.5 | 3.0 | 0.3 | 0.0 | 0.5 | 0.2 | 3.5 |
| | APR APR | -0.8 | 0.3 | 0.2 | -0.4 | 0.2 | 1.4 | -0.3 | -0.1 | -2.5 | 0.4 | 5.6 |
| | MEI MAY | -0.2 | 0.4 | 0.1 | -0.1 | -4.5 | -1.8 | -0.2 | -0.2 | 1.3 | 0.2 | -0.5 |
| | JUN JUN | 0.4 | 0.1 | 0.1 | -0.1 | -1.6 | 1.7 | 0.2 | 0.1 | 1.5 | 0.2 | 0.3 |
| | JUL JUL | -0.7 | 0.3 | 2.0 | 0.1 | 1.0 | -0.7 | -0.3 | 0.0 | -2.0 | 0.3 | -1.6 |
| | OGOS AUG | 1.0 | 0.3 | 0.3 | -0.6 | 7.0 | 9.6 | -0.5 | -0.3 | -0.1 | -0.3 | -2.9 |
| | SEP SEP | 1.4 | 0.2 | 0.1 | 0.1 | 5.8 | 2.4 | 0.3 | -0.1 | 1.3 | 0.3 | -2.3 |
| | OKT OCT | 0.5 | 0.1 | 0.1 | 0.2 | 2.0 | -1.7 | 0.4 | 0.0 | 0.4 | 0.4 | -0.9 |
| | NOV NOV | -0.6 | 0.1 | 0.1 | -0.1 | -2.9 | -3.1 | -0.2 | -0.1 | 0.5 | 0.0 | 4.1 |
| | DIS DEC | -1.4 | 0.1 | -0.1 | -0.5 | -4.5 | -2.5 | -0.5 | -0.2 | -1.4 | -0.1 | 1.2 |
| 2024 | JAN JAN | -0.1 | 0.0 | -0.1 | -0.3 | -2.6 | 2.7 | 0.0 | -0.2 | 0.3 | 0.1 | 6.1 |
| | FEB FEB | 1.1 | 0.1 | -0.5 | 0.3 | 2.0 | 1.3 | -0.3 | 0.1 | 1.7 | 0.3 | 2.1 |
| | MAC MAR | 0.1 | 0.1 | 0.0 | -0.2 | 1.6 | 0.7 | -0.2 | 0.1 | -0.6 | 0.0 | 2.5 |
| | APR APR | 0.6 | 0.0 | -0.7 | 0.1 | 1.1 | 1.4 | -0.2 | 0.0 | 0.7 | 0.5 | 4.8 |
| | MEI ^p MAY ^p | 0.1 | 0.1 | 0.4 | 0.3 | 3.3 | 2.3 | -0.3 | -0.02 | -1.3 | 0.02 | 0.4 |

MALAYSIA
JADUAL 3C : PERATUS PERUBAHAN TAHUN KE TAHUN INDEKS NILAI SEUNIT BAGI IMPORT (2010=100) MENGIKUT SEKSYEN BARANGAN (S.I.T.C.)
TABLE 3C : YEAR-ON-YEAR PERCENTAGE CHANGE IMPORT UNIT VALUE INDICES (2010=100) BY COMMODITY SECTION (S.I.T.C.)

| TEMPOH PERIOD | JUMLAH TOTAL | 0 MAKANAN FOOD | 1 MINUMAN DAN TEBKAU BEVERAGES AND TOBACCO | 2 BAHAN-BAHAN MENTAH TIDAK BOLEH DIMAKAN CRUDE MATERIALS, INEDIBLE | 3 BAHAN API GALIAN, PELINCIR, DLL. MINERAL FUELS, LUBRICANTS, ETC. | 4 MINYAK DAN LEMAK BINATANG DAN SAYUR-SAYURAN ANIMAL AND VEGETABLE OILS AND FATS | 5 BAHAN KIMIA CHEMICALS | 6 BARANG- BARANG KELUARAN KILANG MANUFACTURED GOODS | 7 JENTERA & KELENGKAPAN PENGANGKUTAN MACHINERY & TRANSPORT EQUIPMENT | 8 PELBAGAI BARANG KELUARAN KILANG MISCELLANEOUS MANUFACTURED ARTICLES | 9 PELBAGAI URUS NIAGA DAN BARANGAN MISCELLANEOUS TRANSACTIONS AND COMMODITIES | | |
|--------------------------|------------------|----------------------|--|---|--|---|-------------------------------|---|--|--|---|------|------|
| WAJARAN / WEIGHTS | 100.0 | 6.8 | 0.6 | 3.3 | 12.9 | 1.1 | 10.5 | 13.4 | 41.8 | 7.6 | 2.0 | | |
| 2011 | 5.5 | 6.7 | 1.5 | 5.4 | 25.6 | 35.4 | 1.8 | 2.1 | 1.8 | 1.5 | 25.7 | | |
| 2012 | 1.3 | 2.3 | -0.6 | -3.2 | 4.1 | -18.2 | 0.4 | -0.1 | 1.8 | 1.1 | 10.1 | | |
| 2013 | 0.3 | 2.5 | 1.5 | -1.6 | -1.5 | -19.7 | -1.4 | 0.1 | 1.8 | 1.4 | -5.4 | | |
| 2014 | 1.0 | 3.7 | 0.9 | -0.9 | -1.4 | 16.6 | 0.3 | -0.1 | 1.7 | 1.1 | -7.6 | | |
| 2015 | -0.8 | 3.3 | 0.2 | 1.5 | -26.4 | -5.9 | 1.9 | 0.4 | 3.5 | 1.3 | 12.4 | | |
| 2016 | 1.4 | 0.9 | 1.9 | -3.3 | -19.6 | 18.9 | 0.2 | -1.4 | 5.0 | 4.0 | 17.0 | | |
| 2017 | 6.1 | 8.9 | 3.6 | 16.8 | 32.5 | 25.8 | 4.1 | 5.0 | 2.0 | 2.2 | 4.7 | | |
| 2018 | 2.0 | 2.6 | 2.6 | -6.0 | 21.7 | -13.9 | 2.4 | 1.8 | -0.7 | -1.0 | -6.3 | | |
| 2019 | -0.3 | 2.5 | 2.7 | -0.3 | -10.1 | -12.0 | 0.3 | 0.4 | 1.7 | 0.4 | 10.2 | | |
| 2020 | -3.0 | 2.3 | 1.7 | 0.4 | -27.0 | 15.1 | -0.6 | -0.3 | -0.9 | -0.1 | 23.6 | | |
| 2021 | 3.9 | 2.3 | 1.6 | 10.7 | 25.8 | 48.5 | 2.6 | 4.6 | -1.3 | 0.2 | 2.6 | | |
| 2022 | 10.0 | 2.8 | 1.1 | 1.3 | 56.3 | 44.6 | 0.5 | 1.9 | 4.8 | 2.4 | 4.8 | | |
| 2023^P | -0.9 | 3.0 | 1.3 | -2.3 | -7.0 | -5.4 | -2.6 | -1.1 | 1.0 | 1.8 | 3.6 | | |
| 14 | 2022 | | | | | | | | | | | | |
| | MEI | MAY | 12.8 | 2.8 | 1.0 | 0.6 | 80.2 | 74.5 | 0.9 | 2.5 | 4.3 | 2.1 | 11.9 |
| | JUN | JUN | 14.1 | 2.4 | 0.8 | 0.0 | 90.5 | 56.6 | 0.8 | 1.8 | 5.5 | 2.7 | 10.8 |
| | JUL | JUL | 12.9 | 2.5 | 0.7 | 0.7 | 79.6 | 51.8 | -0.1 | 1.2 | 5.4 | 2.8 | 2.8 |
| | OGOS | AUG | 9.8 | 2.6 | 0.9 | 1.2 | 50.6 | 43.3 | -0.4 | 0.9 | 5.8 | 2.7 | -1.8 |
| | SEP | SEP | 10.3 | 2.7 | 1.0 | 1.0 | 50.9 | 37.3 | -0.3 | 0.4 | 7.7 | 3.0 | -3.5 |
| | OKT | OCT | 10.3 | 2.9 | 1.5 | 1.3 | 39.5 | 34.1 | -0.2 | 0.4 | 10.4 | 3.3 | -0.1 |
| | NOV | NOV | 9.2 | 3.0 | 1.5 | 1.1 | 37.2 | 21.2 | -0.5 | 0.2 | 8.6 | 3.3 | 2.8 |
| | DIS | DEC | 6.0 | 2.8 | 0.4 | 0.3 | 31.1 | 1.9 | -1.8 | -0.6 | 4.8 | 2.8 | -4.9 |
| | 2023 | | | | | | | | | | | | |
| JAN | JAN | 5.3 | 3.0 | 0.1 | 0.1 | 28.1 | -6.5 | -2.0 | -0.9 | 4.7 | 2.4 | 2.0 | |
| FEB | FEB | 4.6 | 3.0 | 0.1 | -1.1 | 18.8 | -6.3 | -3.0 | -0.9 | 6.0 | 2.6 | -2.0 | |
| MAC | MAR | 2.6 | 3.3 | 0.0 | -0.5 | 4.5 | -7.0 | -2.8 | -0.9 | 5.6 | 2.4 | -1.1 | |
| APR | APR | -0.6 | 3.1 | 0.3 | -1.5 | -6.0 | -10.9 | -3.1 | -1.1 | 1.8 | 2.4 | 2.0 | |
| MEI | MAY | -3.5 | 2.8 | 0.4 | -2.5 | -19.2 | -21.6 | -3.0 | -1.4 | 1.3 | 2.3 | 0.7 | |
| JUN | JUN | -4.6 | 2.8 | 0.4 | -2.9 | -25.9 | -15.0 | -3.0 | -1.4 | 1.6 | 1.9 | 2.5 | |
| JUL | JUL | -5.5 | 2.8 | 2.3 | -2.8 | -26.5 | -12.0 | -2.7 | -1.2 | -1.1 | 1.7 | 7.9 | |
| OGOS | AUG | -2.7 | 2.9 | 2.3 | -3.8 | -12.6 | 0.7 | -2.9 | -1.4 | -1.3 | 1.3 | 6.3 | |
| SEP | SEP | -1.4 | 3.1 | 2.2 | -3.5 | -6.7 | 5.1 | -2.4 | -1.1 | -1.0 | 1.3 | 8.0 | |
| OKT | OCT | -1.5 | 3.1 | 2.2 | -3.4 | -1.7 | 4.3 | -2.1 | -1.1 | -3.1 | 1.2 | 3.9 | |
| NOV | NOV | -2.1 | 2.9 | 2.3 | -2.9 | -7.1 | 1.3 | -2.3 | -1.0 | -1.3 | 1.1 | 3.8 | |
| DIS | DEC | -0.6 | 2.8 | 3.1 | -2.4 | -4.7 | 9.7 | -1.9 | -0.9 | 0.3 | 1.5 | 10.9 | |
| 2024 | | | | | | | | | | | | | |
| JAN | JAN | 0.4 | 2.6 | 3.1 | -2.2 | -0.4 | 12.3 | -1.5 | -0.9 | 1.0 | 1.9 | 9.6 | |
| FEB | FEB | 0.9 | 2.6 | 2.5 | -1.0 | 0.5 | 12.3 | -1.2 | -0.9 | 1.3 | 1.9 | 15.0 | |
| MAC | MAR | 0.6 | 2.1 | 2.3 | -1.6 | 2.6 | 9.8 | -1.7 | -0.8 | 0.2 | 1.7 | 13.9 | |
| APR | APR | 2.1 | 1.8 | 1.4 | -1.1 | 3.6 | 9.7 | -1.6 | -0.7 | 3.6 | 1.8 | 13.1 | |
| MEI^P | MAY ^P | 2.4 | 1.5 | 1.6 | -0.8 | 12.1 | 14.3 | -1.6 | -0.6 | 0.9 | 1.6 | 14.1 | |

MALAYSIA
JADUAL 4A : INDEKS VOLUM BAGI IMPORT (2010=100) MENGIKUT SEKSYEN BARANGAN (S.I.T.C.)
TABLE 4A : IMPORT VOLUME INDICES (2010=100) BY COMMODITY SECTION (S.I.T.C.)

| TEMPOH PERIOD | JUMLAH TOTAL | 0 MAKANAN FOOD | 1 MINUMAN DAN TEBAKAU BEVERAGES AND TOBACCO | 2 BAHAN-BAHAN MENTAH TIDAK BOLEH DIMAKAN CRUDE MATERIALS, INEDIBLE | 3 BAHAN API GALIAN, PELINCIR, DLL. MINERAL FUELS, LUBRICANTS, ETC. | 4 MINYAK DAN LEMAK BINATANG DAN SAYUR- SAYURAN ANIMAL AND VEGETABLE OILS AND FATS | 5 BAHAN KIMIA CHEMICALS | 6 BARANG- BARANG KELUARAN KILANG MANUFACTURED GOODS | 7 JENTERA & KELENGKAPAN PENGANGKUTAN MACHINERY & TRANSPORT EQUIPMENT | 8 PELBAGAI BARANG KELUARAN KILANG MISCELLANEOUS MANUFACTURED ARTICLES | 9 PELBAGAI URUS NIAGA DAN BARANGAN MISCELLANEOUS TRANSACTIONS AND COMMODITIES | | |
|-------------------|------------------|----------------------|---|---|--|---|-------------------------------|---|--|--|---|-------|-------|
| 2010 | 100.0 | 100.0 | 100.0 | 100.0 | 100.0 | 100.0 | 100.0 | 100.0 | 100.0 | 100.0 | 100.0 | | |
| 2011 | 102.8 | 106.7 | 129.4 | 120.8 | 102.3 | 119.1 | 110.6 | 112.1 | 95.8 | 110.6 | 103.5 | | |
| 2012 | 107.4 | 109.3 | 159.2 | 125.5 | 125.1 | 120.9 | 111.5 | 112.5 | 98.3 | 113.7 | 98.9 | | |
| 2013 | 114.5 | 114.8 | 168.5 | 122.5 | 154.8 | 65.6 | 123.2 | 127.6 | 100.1 | 111.1 | 130.2 | | |
| 2014 | 119.4 | 121.6 | 166.4 | 113.7 | 171.6 | 61.7 | 136.4 | 130.8 | 101.7 | 123.8 | 133.3 | | |
| 2015 | 120.8 | 125.1 | 186.6 | 114.7 | 171.7 | 98.8 | 141.5 | 133.5 | 102.2 | 147.6 | 120.9 | | |
| 2016 | 121.4 | 127.8 | 182.5 | 130.8 | 181.1 | 65.3 | 149.1 | 132.9 | 103.6 | 153.5 | 89.2 | | |
| 2017 | 137.2 | 128.8 | 143.1 | 152.3 | 203.8 | 64.2 | 167.8 | 141.1 | 119.8 | 165.0 | 119.1 | | |
| 2018 | 141.4 | 122.8 | 144.4 | 175.7 | 197.8 | 74.5 | 181.1 | 145.7 | 123.5 | 166.2 | 118.7 | | |
| 2019 | 137.0 | 122.9 | 137.4 | 201.3 | 214.6 | 82.1 | 176.5 | 139.5 | 113.3 | 164.3 | 97.6 | | |
| 2020 | 133.1 | 129.5 | 95.3 | 196.9 | 224.1 | 95.3 | 163.0 | 128.6 | 112.3 | 154.9 | 80.4 | | |
| 2021 | 157.9 | 145.2 | 93.9 | 254.4 | 235.3 | 108.2 | 207.3 | 143.8 | 135.6 | 180.5 | 134.7 | | |
| 2022 | 188.0 | 167.9 | 128.7 | 227.7 | 288.2 | 93.0 | 248.1 | 168.2 | 165.4 | 223.4 | 126.0 | | |
| 2023 ^P | 178.3 | 169.9 | 126.0 | 191.4 | 302.5 | 60.7 | 229.5 | 168.3 | 153.9 | 207.6 | 94.6 | | |
| 2022 | MEI | MAY | 185.0 | 172.8 | 103.6 | 230.5 | 243.3 | 74.3 | 242.8 | 169.1 | 171.1 | 215.3 | 183.7 |
| | JUN | JUN | 204.6 | 168.8 | 124.0 | 241.4 | 310.2 | 83.9 | 279.0 | 206.7 | 176.2 | 232.7 | 173.1 |
| | JUL | JUL | 199.6 | 167.7 | 151.6 | 199.7 | 331.6 | 111.0 | 258.9 | 177.6 | 169.9 | 233.1 | 168.3 |
| | OGOS | AUG | 213.5 | 184.4 | 154.6 | 226.7 | 421.9 | 104.1 | 264.3 | 168.7 | 173.5 | 254.5 | 134.2 |
| | SEP | SEP | 193.1 | 167.7 | 130.3 | 211.7 | 296.1 | 111.0 | 246.8 | 164.3 | 173.5 | 217.0 | 166.2 |
| | OKT | OCT | 193.9 | 175.6 | 133.2 | 191.4 | 349.3 | 58.6 | 230.2 | 145.5 | 174.6 | 215.7 | 116.2 |
| | NOV | NOV | 184.3 | 171.9 | 146.5 | 227.8 | 249.2 | 70.4 | 234.1 | 160.1 | 169.7 | 250.6 | 113.5 |
| | DIS | DEC | 182.1 | 165.2 | 151.6 | 193.1 | 279.4 | 81.9 | 231.1 | 167.2 | 160.5 | 247.7 | 91.8 |
| 2023 | JAN | JAN | 168.3 | 161.9 | 126.9 | 178.4 | 261.9 | 93.5 | 220.3 | 156.9 | 148.0 | 205.7 | 73.2 |
| | FEB | FEB | 164.1 | 150.3 | 121.4 | 154.6 | 329.2 | 72.5 | 218.0 | 138.8 | 133.7 | 172.0 | 118.0 |
| | MAC | MAR | 181.6 | 185.3 | 94.0 | 232.6 | 286.3 | 53.5 | 242.6 | 174.8 | 155.7 | 218.9 | 80.8 |
| | APR | APR | 164.6 | 167.0 | 118.4 | 176.9 | 278.2 | 51.3 | 212.9 | 158.0 | 143.2 | 176.2 | 72.4 |
| | MEI | MAY | 185.0 | 173.3 | 120.3 | 198.9 | 346.2 | 61.0 | 253.5 | 180.4 | 151.6 | 199.3 | 103.0 |
| | JUN | JUN | 174.6 | 159.8 | 134.5 | 177.0 | 358.6 | 72.3 | 222.0 | 160.2 | 140.2 | 197.3 | 108.1 |
| | JUL | JUL | 177.7 | 166.1 | 137.0 | 180.0 | 315.4 | 74.0 | 228.6 | 168.6 | 151.2 | 211.8 | 86.1 |
| | OGOS | AUG | 173.1 | 160.9 | 133.4 | 181.5 | 261.4 | 73.0 | 221.8 | 163.8 | 156.2 | 205.7 | 102.8 |
| | SEP | SEP | 174.3 | 169.6 | 132.2 | 196.3 | 245.9 | 38.8 | 223.7 | 176.1 | 158.7 | 210.2 | 94.7 |
| | OKT | OCT | 196.5 | 184.2 | 146.7 | 215.7 | 349.7 | 48.2 | 243.9 | 177.6 | 168.3 | 218.3 | 129.8 |
| | NOV | NOV | 191.3 | 178.1 | 123.0 | 199.4 | 296.2 | 39.6 | 240.8 | 179.5 | 172.2 | 239.7 | 88.1 |
| | DIS | DEC | 188.9 | 181.8 | 124.3 | 204.9 | 300.5 | 50.5 | 225.6 | 185.3 | 167.1 | 236.2 | 78.2 |
| 2024 | JAN | JAN | 199.0 | 219.6 | 129.2 | 216.7 | 318.4 | 39.3 | 234.1 | 210.3 | 169.2 | 241.3 | 120.0 |
| | FEB | FEB | 175.6 | 160.7 | 120.3 | 229.4 | 312.1 | 36.9 | 209.6 | 169.5 | 149.2 | 196.8 | 100.6 |
| | MAC | MAR | 203.1 | 199.1 | 118.1 | 211.8 | 366.4 | 43.8 | 233.9 | 180.7 | 179.8 | 206.7 | 122.1 |
| | APR | APR | 186.3 | 190.1 | 103.2 | 223.1 | 250.0 | 46.8 | 241.8 | 183.9 | 168.5 | 224.7 | 129.7 |
| | MEI ^P | MAY ^P | 205.5 | 196.0 | 102.8 | 201.3 | 315.0 | 61.9 | 242.6 | 194.9 | 186.9 | 229.8 | 141.7 |

MALAYSIA

JADUAL 4B : PERATUS PERUBAHAN BULAN KE BULAN INDEKS VOLUM BAGI IMPORT (2010=100) MENGIKUT SEKSYEN BARANGAN (S.I.T.C.)

TABLE 4B : MONTH-ON-MONTH PERCENTAGE CHANGE IMPORT VOLUME INDICES (2010=100) BY COMMODITY SECTION (S.I.T.C.)

| TEMPOH PERIOD | JUMLAH TOTAL | 0 MAKANAN FOOD | 1 MINUMAN DAN TEBAKAU BEVERAGES AND TOBACCO | 2 BAHAN-BAHAN MENTAH TIDAK BOLEH DIMAKAN CRUDE MATERIALS, INEDIBLE | 3 BAHAN API GALIAN, PELINCIR, DLL. MINERAL FUELS, LUBRICANTS, ETC. | 4 MINYAK DAN LEMAK BINATANG DAN SAYUR-SAYURAN ANIMAL AND VEGETABLE OILS AND FATS | 5 BAHAN KIMIA CHEMICALS | 6 BARANG-BARANG KELUARAN KILANG MANUFACTURED GOODS | 7 JENTERA & KELENGKAPAN PENGANGKUTAN MACHINERY & TRANSPORT EQUIPMENT | 8 PELBAGAI BARANG KELUARAN KILANG MISCELLANEOUS MANUFACTURED ARTICLES | 9 PELBAGAI URUS NIAGA DAN BARANGAN MISCELLANEOUS TRANSACTIONS AND COMMODITIES | | |
|------------------|------------------------|------------------------|---|---|---|--|-------------------------------|--|--|--|---|-------|-------|
| 2022 | MEI | <i>MAY</i> | 0.7 | 9.4 | 0.7 | -24.4 | -6.0 | -19.7 | -6.3 | -4.7 | 6.4 | 3.8 | 97.6 |
| | JUN | <i>JUN</i> | 10.6 | -2.3 | 19.6 | 4.7 | 27.5 | 12.8 | 14.9 | 22.2 | 3.0 | 8.1 | -5.8 |
| | JUL | <i>JUL</i> | -2.4 | -0.7 | 22.3 | -17.3 | 6.9 | 32.4 | -7.2 | -14.1 | -3.6 | 0.2 | -2.8 |
| | OGOS | <i>AUG</i> | 6.9 | 10.0 | 2.0 | 13.5 | 27.2 | -6.2 | 2.1 | -5.0 | 2.1 | 9.2 | -20.3 |
| | SEP | <i>SEP</i> | -9.6 | -9.1 | -15.8 | -6.6 | -29.8 | 6.6 | -6.6 | -2.6 | 0.0 | -14.7 | 23.9 |
| | OKT | <i>OCT</i> | 0.4 | 4.7 | 2.2 | -9.6 | 18.0 | -47.2 | -6.7 | -11.4 | 0.6 | -0.6 | -30.1 |
| | NOV | <i>NOV</i> | -5.0 | -2.1 | 10.0 | 19.0 | -28.7 | 20.1 | 1.7 | 10.0 | -2.8 | 16.2 | -2.3 |
| | DIS | <i>DEC</i> | -1.2 | -3.9 | 3.5 | -15.2 | 12.1 | 16.3 | -1.3 | 4.4 | -5.4 | -1.2 | -19.1 |
| 2023 | JAN | <i>JAN</i> | -7.6 | -2.0 | -16.3 | -7.6 | -6.3 | 14.2 | -4.7 | -6.1 | -7.8 | -17.0 | -20.2 |
| | FEB | <i>FEB</i> | -2.5 | -7.1 | -4.4 | -13.3 | 25.7 | -22.5 | -1.0 | -11.5 | -9.7 | -16.4 | 61.0 |
| | MAC | <i>MAR</i> | 10.7 | 23.2 | -22.5 | 50.4 | -13.0 | -26.2 | 11.3 | 25.9 | 16.5 | 27.3 | -31.5 |
| | APR | <i>APR</i> | -9.4 | -9.9 | 25.9 | -23.9 | -2.8 | -4.2 | -12.2 | -9.6 | -8.1 | -19.5 | -10.3 |
| | MEI | <i>MAY</i> | 12.4 | 3.8 | 1.6 | 12.4 | 24.5 | 18.9 | 19.1 | 14.1 | 5.9 | 13.1 | 42.2 |
| | JUN | <i>JUN</i> | -5.6 | -7.8 | 11.8 | -11.0 | 3.6 | 18.5 | -12.5 | -11.2 | -7.5 | -1.0 | 5.0 |
| | JUL | <i>JUL</i> | 1.8 | 3.9 | 1.9 | 1.7 | -12.0 | 2.4 | 3.0 | 5.2 | 7.8 | 7.4 | -20.4 |
| | OGOS | <i>AUG</i> | -2.6 | -3.1 | -2.6 | 0.8 | -17.1 | -1.3 | -3.0 | -2.8 | 3.3 | -2.9 | 19.4 |
| | SEP | <i>SEP</i> | 0.7 | 5.5 | -0.9 | 8.2 | -6.0 | -46.9 | 0.9 | 7.5 | 1.6 | 2.2 | -7.9 |
| | OKT | <i>OCT</i> | 12.7 | 8.6 | 11.0 | 9.9 | 42.2 | 24.2 | 9.0 | 0.9 | 6.1 | 3.8 | 37.0 |
| | NOV | <i>NOV</i> | -2.6 | -3.3 | -16.2 | -7.6 | -15.3 | -17.7 | -1.3 | 1.1 | 2.3 | 9.8 | -32.1 |
| | DIS | <i>DEC</i> | -1.3 | 2.1 | 1.0 | 2.7 | 1.5 | 27.6 | -6.3 | 3.2 | -2.9 | -1.5 | -11.1 |
| 2024 | JAN | <i>JAN</i> | 5.4 | 20.8 | 4.0 | 5.8 | 5.9 | -22.3 | 3.8 | 13.5 | 1.2 | 2.1 | 53.3 |
| | FEB | <i>FEB</i> | -11.7 | -26.8 | -6.9 | 5.9 | -2.0 | -6.0 | -10.5 | -19.4 | -11.8 | -18.4 | -16.1 |
| | MAC | <i>MAR</i> | 15.6 | 23.8 | -1.9 | -7.7 | 17.4 | 18.7 | 11.6 | 6.6 | 20.5 | 5.1 | 21.3 |
| | APR | <i>APR</i> | -8.3 | -4.5 | -12.6 | 5.4 | -31.8 | 6.9 | 3.3 | 1.8 | -6.3 | 8.7 | 6.3 |
| | MEI^P | <i>MAY^P</i> | 10.3 | 3.1 | -0.4 | -9.8 | 26.0 | 32.2 | 0.3 | 6.0 | 10.9 | 2.2 | 9.2 |

MALAYSIA
JADUAL 4C : PERATUS PERUBAHAN TAHUN KE TAHUN INDEKS VOLUM BAGI IMPORT (2010=100) MENGIKUT SEKSYEN BARANGAN (S.I.T.C.)
TABLE 4C : YEAR-ON-YEAR PERCENTAGE CHANGE IMPORT VOLUME INDICES (2010=100) BY COMMODITY SECTION (S.I.T.C.)

| TEMPOH PERIOD | JUMLAH TOTAL | 0 MAKANAN FOOD | 1 MINUMAN DAN TEBBAKAU BEVERAGES AND TOBACCO | 2 BAHAN-BAHAN MENTAH TIDAK BOLEH DIMAKAN CRUDE MATERIALS, INEDIBLE | 3 BAHAN API GALIAN, PELINCIR, DLL. MINERAL FUELS, LUBRICANTS, ETC. | 4 MINYAK DAN LEMAK BINATANG DAN SAYUR- SAYURAN ANIMAL AND VEGETABLE OILS AND FATS | 5 BAHAN KIMIA CHEMICALS | 6 BARANG-BARANG KELUARAN KILANG MANUFACTURED GOODS | 7 JENTERA & KELENGKAPAN PENGANGKUTAN MACHINERY & TRANSPORT EQUIPMENT | 8 PELBAGAI BARANG KELUARAN KILANG MISCELLANEOUS MANUFACTURED ARTICLES | 9 PELBAGAI URUS NIAGA DAN BARANGAN MISCELLANEOUS TRANSACTIONS AND COMMODITIES | | |
|-------------------|------------------|----------------------|--|---|--|---|-------------------------------|---|--|--|---|-------|-------|
| 2011 | 2.8 | 6.7 | 29.4 | 20.9 | 2.3 | 19.1 | 10.6 | 12.1 | -4.2 | 10.6 | 3.5 | | |
| 2012 | 4.4 | 2.4 | 23.0 | 3.8 | 22.3 | 1.5 | 0.8 | 0.3 | 2.5 | 2.8 | -4.5 | | |
| 2013 | 6.6 | 5.0 | 5.9 | -2.4 | 23.8 | -45.7 | 10.5 | 13.4 | 1.8 | -2.2 | 31.7 | | |
| 2014 | 4.3 | 5.9 | -1.2 | -7.2 | 10.9 | -6.0 | 10.8 | 2.5 | 1.6 | 11.4 | 2.4 | | |
| 2015 | 1.1 | 2.9 | 12.1 | 0.8 | 0.0 | 60.2 | 3.7 | 2.1 | 0.5 | 19.2 | -9.3 | | |
| 2016 | 0.6 | 2.1 | -2.2 | 14.1 | 5.5 | -33.9 | 5.4 | -0.5 | 1.4 | 4.0 | -26.2 | | |
| 2017 | 12.9 | 0.8 | -21.6 | 16.5 | 12.6 | -1.6 | 12.5 | 6.2 | 15.7 | 7.5 | 33.5 | | |
| 2018 | 3.1 | -4.7 | 0.9 | 15.4 | -3.0 | 16.0 | 8.0 | 3.3 | 3.0 | 0.7 | -0.3 | | |
| 2019 | -3.1 | 0.1 | -4.8 | 14.6 | 8.5 | 10.2 | -2.5 | -4.3 | -8.2 | -1.2 | -17.8 | | |
| 2020 | -2.8 | 5.3 | -30.6 | -2.2 | 4.4 | 16.0 | -7.7 | -7.8 | -0.9 | -5.7 | -17.7 | | |
| 2021 | 18.6 | 12.1 | -1.4 | 29.2 | 5.0 | 13.6 | 27.2 | 11.8 | 20.7 | 16.5 | 67.6 | | |
| 2022 | 19.1 | 15.6 | 37.0 | -10.5 | 22.5 | -14.1 | 19.7 | 16.9 | 22.0 | 23.7 | -6.5 | | |
| 2023 ^P | -5.2 | 1.2 | -2.1 | -16.0 | 5.0 | -34.7 | -7.5 | 0.1 | -7.0 | -7.1 | -24.9 | | |
| 17 | | | | | | | | | | | | | |
| 2022 | MEI | MAY | 21.7 | 27.4 | 7.0 | -8.8 | 11.4 | -23.8 | 18.0 | 13.6 | 34.1 | 14.1 | 77.3 |
| | JUN | JUN | 27.6 | 10.2 | 12.3 | -5.5 | 17.6 | -39.9 | 25.3 | 34.4 | 34.2 | 29.0 | 182.1 |
| | JUL | JUL | 25.6 | 13.9 | 68.9 | -40.4 | 26.4 | -1.7 | 29.0 | 33.6 | 26.3 | 32.9 | 237.5 |
| | OGOS | AUG | 52.5 | 36.8 | 66.2 | 11.6 | 150.2 | 2.4 | 32.7 | 31.1 | 37.3 | 52.9 | 90.8 |
| | SEP | SEP | 20.4 | 11.2 | 58.0 | -16.2 | 28.3 | 18.0 | 17.2 | 24.7 | 21.6 | 22.3 | 10.0 |
| | OKT | OCT | 17.1 | 20.2 | 72.1 | -20.0 | 39.9 | -40.7 | 10.9 | 6.6 | 16.8 | 21.1 | -30.4 |
| | NOV | NOV | 5.8 | 12.5 | 47.0 | -11.7 | 0.0 | -34.2 | 0.4 | 3.7 | 8.6 | 26.2 | 1.7 |
| | DIS | DEC | 5.2 | 0.6 | 21.6 | -24.3 | 47.4 | 3.4 | -2.6 | -0.7 | 0.2 | 18.8 | -22.5 |
| 2023 | JAN | JAN | -3.1 | -11.0 | 16.0 | -30.0 | 28.5 | 8.4 | -10.9 | -6.8 | -5.1 | 2.3 | -31.4 |
| | FEB | FEB | 7.5 | 13.3 | 41.7 | -21.5 | 58.7 | -44.7 | -1.7 | -0.8 | -1.5 | -2.1 | 36.8 |
| | MAC | MAR | -4.5 | 10.3 | -38.0 | -8.3 | -6.8 | -51.5 | -7.1 | 0.9 | -4.5 | -4.7 | 2.8 |
| | APR | APR | -10.4 | 5.7 | 15.1 | -41.9 | 7.5 | -44.6 | -17.8 | -10.9 | -11.0 | -15.0 | -22.1 |
| | MEI | MAY | 0.0 | 0.3 | 16.1 | -13.7 | 42.3 | -18.0 | 4.4 | 6.6 | -11.4 | -7.4 | -43.9 |
| | JUN | JUN | -14.7 | -5.3 | 8.5 | -26.7 | 15.6 | -13.8 | -20.4 | -22.5 | -20.4 | -15.2 | -37.5 |
| | JUL | JUL | -11.0 | -1.0 | -9.6 | -9.9 | -4.9 | -33.3 | -11.7 | -5.1 | -11.0 | -9.1 | -48.8 |
| | OGOS | AUG | -18.9 | -12.8 | -13.7 | -19.9 | -38.0 | -29.8 | -16.1 | -2.9 | -10.0 | -19.2 | -23.4 |
| | SEP | SEP | -9.7 | 1.2 | 1.5 | -7.3 | -17.0 | -65.1 | -9.4 | 7.2 | -8.5 | -3.1 | -43.0 |
| | OKT | OCT | 1.3 | 4.9 | 10.2 | 12.7 | 0.1 | -17.9 | 6.0 | 22.1 | -3.6 | 1.2 | 11.7 |
| | NOV | NOV | 3.8 | 3.6 | -16.0 | -12.5 | 18.9 | -43.7 | 2.9 | 12.1 | 1.5 | -4.3 | -22.4 |
| | DIS | DEC | 3.7 | 10.1 | -18.0 | 6.1 | 7.6 | -38.3 | -2.4 | 10.8 | 4.1 | -4.7 | -14.8 |
| 2024 | JAN | JAN | 18.2 | 35.7 | 1.8 | 21.4 | 21.6 | -58.0 | 6.3 | 34.0 | 14.3 | 17.3 | 63.8 |
| | FEB | FEB | 7.0 | 6.9 | -0.9 | 48.3 | -5.2 | -49.0 | -3.9 | 22.1 | 11.5 | 14.4 | -14.7 |
| | MAC | MAR | 11.8 | 7.4 | 25.6 | -8.9 | 28.0 | -18.1 | -3.6 | 3.3 | 15.4 | -5.6 | 51.1 |
| | APR | APR | 13.2 | 13.8 | -12.8 | 26.1 | -10.1 | -8.6 | 13.5 | 16.4 | 17.7 | 27.5 | 79.1 |
| | MEI ^P | MAY ^P | 11.1 | 13.1 | -14.5 | 1.2 | -9.0 | 1.5 | -4.3 | 8.1 | 23.3 | 15.3 | 37.6 |

MALAYSIA
JADUAL 5A : TERMA PERDAGANGAN (2010=100) MENGIKUT SEKSYEN BARANGAN (S.I.T.C)
TABLE 5A: TERMS OF TRADE (2010=100) BY COMMODITY SECTION (S.I.T.C.)

| TEMPOH PERIOD | JUMLAH TOTAL | 0 MAKANAN FOOD | 1 MINUMAN DAN TEBKAU BEVERAGES AND TOBACCO | 2 BAHAN-BAHAN BOLEH DIMAKAN MENTAH TIDAK CRUDE MATERIALS, INEDIBLE | 3 BAHAN API GALIAN, PELINCIR, DLL. MINERAL FUELS, LUBRICANTS, ETC. | 4 MINYAK DAN LEMAK BINATANG DAN SAYUR-SAYURAN ANIMAL AND VEGETABLE OILS AND FATS | 5 BAHAN KIMIA CHEMICALS | 6 BARANG- BARANG KELUARAN KILANG MANUFACTURED GOODS | 7 JENTERA & KELENGKAPAN PENGANGKUTAN MACHINERY & TRANSPORT EQUIPMENT | 8 PELBAGAI BARANG KELUARAN KILANG MISCELLANEOUS MANUFACTURED ARTICLES | 9 PELBAGAI URUS NIAGA DAN BARANGAN MISCELLANEOUS TRANSACTIONS AND COMMODITIES | | | |
|-------------------|------------------|----------------------|--|---|---|--|-------------------------------|---|--|--|---|-------|-------|-------|
| 2010 | 100.0 | 100.0 | 100.0 | 100.0 | 100.0 | 100.0 | 100.0 | 100.0 | 100.0 | 100.0 | 100.0 | | | |
| 2011 | 105.5 | 103.8 | 99.4 | 118.7 | 103.5 | 95.1 | 110.7 | 105.7 | 100.2 | 104.4 | 93.6 | | | |
| 2012 | 105.1 | 103.2 | 100.7 | 106.3 | 108.6 | 103.3 | 108.4 | 97.0 | 101.3 | 105.0 | 106.8 | | | |
| 2013 | 103.0 | 102.0 | 99.7 | 94.4 | 108.7 | 108.8 | 109.0 | 94.1 | 100.2 | 105.5 | 114.1 | | | |
| 2014 | 103.2 | 101.0 | 100.4 | 85.1 | 112.1 | 98.8 | 115.1 | 94.8 | 98.5 | 106.3 | 125.4 | | | |
| 2015 | 99.7 | 102.6 | 105.0 | 81.2 | 107.2 | 95.6 | 123.0 | 97.8 | 98.2 | 109.4 | 108.5 | | | |
| 2016 | 96.4 | 107.4 | 109.7 | 81.9 | 100.3 | 86.8 | 129.6 | 98.8 | 94.0 | 108.7 | 108.2 | | | |
| 2017 | 97.4 | 105.3 | 113.9 | 80.0 | 96.6 | 78.0 | 138.8 | 98.6 | 93.3 | 109.8 | 116.1 | | | |
| 2018 | 97.1 | 105.9 | 118.4 | 79.3 | 92.5 | 77.5 | 140.8 | 98.2 | 93.2 | 112.6 | 126.5 | | | |
| 2019 | 98.2 | 106.0 | 124.0 | 78.9 | 103.0 | 79.4 | 139.3 | 95.0 | 93.9 | 114.6 | 109.4 | | | |
| 2020 | 98.7 | 107.0 | 126.2 | 78.2 | 105.4 | 84.6 | 140.8 | 94.4 | 95.8 | 115.3 | 81.6 | | | |
| 2021 | 104.6 | 108.6 | 128.6 | 75.7 | 112.6 | 84.6 | 145.9 | 94.8 | 98.8 | 117.3 | 87.8 | | | |
| 2022 | 111.5 | 110.2 | 132.8 | 76.9 | 116.0 | 68.9 | 156.4 | 97.3 | 104.0 | 115.7 | 150.3 | | | |
| 2023 ^P | 111.4 | 113.6 | 136.6 | 79.2 | 113.1 | 51.7 | 161.4 | 98.1 | 110.6 | 114.8 | 231.1 | | | |
| 18 | 2022 | MEI | MAY | 112.1 | 109.4 | 131.5 | 77.1 | 108.2 | 73.3 | 156.8 | 97.9 | 103.6 | 116.3 | 142.8 |
| | | JUN | JUN | 110.7 | 109.9 | 131.7 | 76.8 | 100.5 | 76.3 | 157.0 | 97.7 | 103.8 | 116.1 | 159.0 |
| | | JUL | JUL | 112.2 | 110.2 | 133.0 | 77.1 | 105.6 | 78.4 | 157.8 | 97.7 | 104.0 | 116.1 | 148.4 |
| | | OGOS | AUG | 111.9 | 110.9 | 132.6 | 77.0 | 115.6 | 66.7 | 157.9 | 97.2 | 104.0 | 115.9 | 171.0 |
| | | SEP | SEP | 113.0 | 111.0 | 134.1 | 77.1 | 124.3 | 60.7 | 158.5 | 97.3 | 104.2 | 115.8 | 169.6 |
| | | OKT | OCT | 112.4 | 111.3 | 134.4 | 76.6 | 124.0 | 58.1 | 158.7 | 97.7 | 104.5 | 114.8 | 192.2 |
| | | NOV | NOV | 111.6 | 111.8 | 134.8 | 75.9 | 120.0 | 54.3 | 159.0 | 98.0 | 105.8 | 114.9 | 174.3 |
| | | DIS | DEC | 111.6 | 111.8 | 136.2 | 76.3 | 117.9 | 59.2 | 159.3 | 97.5 | 107.6 | 114.2 | 202.9 |
| | 2023 | JAN | JAN | 111.5 | 111.6 | 136.9 | 76.8 | 119.1 | 59.1 | 159.4 | 97.9 | 108.5 | 114.3 | 160.2 |
| | | FEB | FEB | 109.7 | 111.6 | 137.2 | 76.9 | 113.6 | 56.8 | 160.0 | 97.4 | 106.6 | 113.8 | 193.4 |
| | | MAC | MAR | 110.3 | 112.3 | 137.1 | 77.3 | 112.2 | 56.9 | 161.3 | 97.6 | 107.6 | 114.4 | 249.3 |
| | | APR | APR | 110.7 | 112.6 | 137.1 | 78.2 | 107.2 | 55.9 | 161.6 | 97.4 | 111.8 | 114.4 | 218.6 |
| | | MEI | MAY | 110.8 | 112.8 | 137.7 | 78.9 | 112.2 | 55.8 | 162.1 | 98.2 | 110.5 | 114.1 | 188.0 |
| | JUN | JUN | 110.4 | 114.4 | 138.0 | 79.9 | 110.7 | 52.7 | 161.6 | 98.6 | 110.2 | 114.7 | 233.9 | |
| | JUL | JUL | 111.0 | 114.0 | 135.7 | 80.5 | 109.3 | 50.9 | 161.1 | 98.6 | 113.1 | 116.0 | 204.8 | |
| | OGOS | AUG | 110.5 | 114.0 | 135.4 | 80.5 | 107.3 | 46.2 | 161.0 | 98.3 | 112.4 | 114.9 | 232.8 | |
| | SEP | SEP | 110.7 | 114.2 | 135.6 | 79.8 | 105.0 | 46.3 | 162.2 | 98.2 | 112.1 | 115.8 | 267.2 | |
| | OKT | OCT | 111.5 | 114.7 | 135.8 | 79.7 | 109.0 | 46.5 | 162.1 | 98.6 | 111.6 | 114.9 | 292.2 | |
| | NOV | NOV | 114.5 | 115.1 | 135.8 | 80.6 | 124.6 | 47.3 | 162.5 | 98.3 | 110.6 | 114.8 | 281.5 | |
| | DIS | DEC | 115.0 | 116.1 | 136.6 | 81.3 | 127.3 | 46.8 | 162.5 | 98.0 | 112.0 | 115.3 | 251.0 | |
| 2024 | JAN | JAN | 114.5 | 117.3 | 137.2 | 81.9 | 127.1 | 46.2 | 163.3 | 98.0 | 111.6 | 116.1 | 224.5 | |
| | FEB | FEB | 113.4 | 119.3 | 139.1 | 82.3 | 120.7 | 45.8 | 165.4 | 98.5 | 110.5 | 116.5 | 255.8 | |
| | MAC | MAR | 115.2 | 120.1 | 139.6 | 83.1 | 124.4 | 47.0 | 166.7 | 98.4 | 111.8 | 117.0 | 269.8 | |
| | APR | APR | 114.0 | 121.3 | 142.9 | 83.6 | 119.7 | 48.0 | 166.9 | 98.5 | 110.4 | 117.0 | 275.7 | |
| | MEI ^P | MAY ^P | 114.8 | 122.4 | 144.1 | 84.6 | 117.6 | 47.0 | 168.2 | 98.3 | 112.2 | 117.3 | 300.6 | |

MALAYSIA
JADUAL 5B : PERATUS PERUBAHAN BULAN KE BULAN TERMA PERDAGANGAN (2010=100) MENGIKUT SEKSYEN BARANGAN (S.I.T.C.)
TABLE 5B: MONTH-ON-MONTH PERCENTAGE CHANGE OF TERMS OF TRADE (2010=100) BY COMMODITY SECTION (S.I.T.C.)

| TEMPOH PERIOD | JUMLAH TOTAL | 0 MAKANAN FOOD | 1 MINUMAN DAN TEBAKAU BEVERAGES AND TOBACCO | 2 BAHAN-BAHAN MENTAH TIDAK BOLEH DIMAKAN CRUDE MATERIALS, INEDIBLE | 3 BAHAN API GALIAN, PELINCIR, DLL. MINERAL FUELS, LUBRICANTS, ETC. | 4 MINYAK DAN LEMAK BINATANG DAN SAYUR-SAYURAN ANIMAL AND VEGETABLE OILS AND FATS | 5 BAHAN KIMIA CHEMICALS | 6 BARANG-BARANG KELUARAN KILANG MANUFACTURED GOODS | 7 JENTERA & KELENGKAPAN PENGANGKUTAN MACHINERY & TRANSPORT EQUIPMENT | 8 PELBAGAI BARANG KELUARAN KILANG MISCELLANEOUS MANUFACTURED ARTICLES | 9 PELBAGAI URUS NIAGA DAN BARANGAN MISCELLANEOUS TRANSACTIONS AND COMMODITIES | | |
|------------------|------------------|----------------------|---|---|---|---|-------------------------------|---|--|--|---|------|-------|
| 2022 | MEI | MAY | 1.1 | 0.4 | -0.1 | -0.1 | -1.2 | -5.0 | 1.5 | 0.4 | 0.6 | 0.6 | 22.3 |
| | JUN | JUN | -1.3 | 0.4 | 0.1 | -0.4 | -7.1 | 4.1 | 0.1 | -0.2 | 0.2 | -0.2 | 11.3 |
| | JUL | JUL | 1.3 | 0.3 | 1.0 | 0.4 | 5.0 | 2.8 | 0.5 | 0.0 | 0.2 | -0.1 | -6.7 |
| | OGOS | AUG | -0.2 | 0.6 | -0.3 | -0.1 | 9.5 | -14.8 | 0.1 | -0.5 | -0.1 | -0.1 | 15.2 |
| | SEP | SEP | 1.0 | 0.0 | 1.2 | 0.1 | 7.6 | -9.0 | 0.4 | 0.1 | 0.2 | -0.1 | -0.8 |
| | OKT | OCT | -0.6 | 0.3 | 0.2 | -0.7 | -0.2 | -4.4 | 0.1 | 0.4 | 0.3 | -0.9 | 13.3 |
| | NOV | NOV | -0.7 | 0.5 | 0.3 | -0.9 | -3.2 | -6.5 | 0.2 | 0.4 | 1.3 | 0.1 | -9.3 |
| | DIS | DEC | 0.0 | -0.1 | 1.0 | 0.6 | -1.8 | 9.0 | 0.2 | -0.5 | 1.6 | -0.7 | 16.4 |
| 2023 | JAN | JAN | -0.1 | -0.1 | 0.5 | 0.6 | 1.1 | -0.1 | 0.1 | 0.4 | 0.9 | 0.1 | -21.0 |
| | FEB | FEB | -1.6 | 0.0 | 0.3 | 0.2 | -4.6 | -4.0 | 0.3 | -0.6 | -1.8 | -0.4 | 20.7 |
| | MAC | MAR | 0.6 | 0.6 | -0.1 | 0.4 | -1.3 | 0.2 | 0.8 | 0.3 | 1.0 | 0.5 | 28.9 |
| | APR | APR | 0.4 | 0.3 | 0.0 | 1.3 | -4.5 | -1.7 | 0.2 | -0.2 | 3.9 | 0.0 | -12.3 |
| | MEI | MAY | 0.1 | 0.2 | 0.4 | 0.8 | 4.7 | -0.2 | 0.3 | 0.9 | -1.1 | -0.3 | -14.0 |
| | JUN | JUN | -0.4 | 1.4 | 0.2 | 1.4 | -1.3 | -5.5 | -0.3 | 0.3 | -0.3 | 0.5 | 24.4 |
| | JUL | JUL | 0.6 | -0.3 | -1.6 | 0.8 | -1.2 | -3.5 | -0.3 | 0.0 | 2.7 | 1.1 | -12.5 |
| | OGOS | AUG | -0.5 | 0.0 | -0.2 | -0.1 | -1.9 | -9.2 | -0.1 | -0.3 | -0.6 | -0.9 | 13.7 |
| | SEP | SEP | 0.2 | 0.2 | 0.1 | -0.8 | -2.1 | 0.1 | 0.8 | -0.1 | -0.3 | 0.8 | 14.8 |
| | OKT | OCT | 0.7 | 0.4 | 0.2 | -0.2 | 3.8 | 0.5 | -0.1 | 0.4 | -0.5 | -0.7 | 9.4 |
| | NOV | NOV | 2.7 | 0.4 | 0.0 | 1.2 | 14.3 | 1.7 | 0.3 | -0.3 | -0.9 | -0.1 | -3.7 |
| | DIS | DEC | 0.4 | 0.9 | 0.6 | 0.8 | 2.2 | -1.0 | 0.0 | -0.3 | 1.3 | 0.4 | -10.8 |
| 2024 | JAN | JAN | -0.4 | 1.0 | 0.4 | 0.8 | -0.2 | -1.3 | 0.5 | 0.0 | -0.4 | 0.7 | -10.6 |
| | FEB | FEB | -1.0 | 1.7 | 1.3 | 0.4 | -5.1 | -0.8 | 1.3 | 0.6 | -1.0 | 0.4 | 13.9 |
| | MAC | MAR | 1.6 | 0.7 | 0.4 | 1.0 | 3.1 | 2.8 | 0.8 | -0.1 | 1.2 | 0.4 | 5.5 |
| | APR | APR | -1.0 | 1.0 | 2.3 | 0.6 | -3.8 | 2.1 | 0.1 | 0.1 | -1.2 | -0.1 | 2.2 |
| | MEI ^P | MAY ^P | 0.7 | 1.0 | 0.8 | 1.2 | -1.8 | -2.1 | 0.8 | -0.2 | 1.6 | 0.3 | 9.0 |

MALAYSIA
JADUAL 5C : PERATUS PERUBAHAN TAHUN KE TAHUN TERMA PERDAGANGAN (2010=100) MENGIKUT SEKSYEN BARANGAN (S.I.T.C.)
TABLE 5C: YEAR-ON-YEAR PERCENTAGE CHANGE OF TERMS OF TRADE (2010=100) BY COMMODITY SECTION (S.I.T.C.)

| TEMPOH PERIOD | JUMLAH TOTAL | 0 MAKANAN FOOD | 1 MINUMAN DAN TEMBAKAU BEVERAGES AND TOBACCO | 2 BAHAN-BAHAN MENTAH TIDAK BOLEH DIMAKAN CRUDE MATERIALS, INEDIBLE | 3 BAHAN API GALIAN, PELINCIR, DLL. MINERAL FUELS, LUBRICANTS, ETC. | 4 MINYAK DAN LEMAK BINATANG DAN SAYUR-SAYURAN ANIMAL AND VEGETABLE OILS AND FATS | 5 BAHAN KIMIA CHEMICALS | 6 BARANG-BARANG KELUARAN KILANG MANUFACTURED GOODS | 7 JENTERA & KELENGKAPAN PENGANGKUTAN MACHINERY & TRANSPORT EQUIPMENT | 8 PELBAGAI BARANG KELUARAN KILANG MISCELLANEOUS MANUFACTURED ARTICLES | 9 PELBAGAI URUS NIAGA DAN BARANGAN MISCELLANEOUS TRANSACTIONS AND COMMODITIES | | |
|-------------------|------------------|------------------|--|--|--|--|-------------------------|--|--|---|---|------|-------|
| 2011 | 5.5 | 3.8 | -0.7 | 18.7 | 3.5 | -4.9 | 10.6 | 5.7 | 0.2 | 4.4 | -6.5 | | |
| 2012 | -0.3 | -0.6 | 1.3 | -10.4 | 4.8 | 8.6 | -2.0 | -8.2 | 1.2 | 0.5 | 14.2 | | |
| 2013 | -2.0 | -1.2 | -1.0 | -11.2 | 0.2 | 5.3 | 0.5 | -3.0 | -1.2 | 0.5 | 6.8 | | |
| 2014 | 0.2 | -0.9 | 0.7 | -9.8 | 3.1 | -9.2 | 5.6 | 0.8 | -1.7 | 0.7 | 9.9 | | |
| 2015 | -3.4 | 1.6 | 4.6 | -4.6 | -4.4 | -3.3 | 6.9 | 3.1 | -0.3 | 2.9 | -13.5 | | |
| 2016 | -3.3 | 4.7 | 4.5 | 0.8 | -6.4 | -9.2 | 5.4 | 1.0 | -4.3 | -0.6 | -0.2 | | |
| 2017 | 1.1 | -1.9 | 3.8 | -2.2 | -3.7 | -10.2 | 7.1 | -0.2 | -0.8 | 1.0 | 7.3 | | |
| 2018 | -0.4 | 0.6 | 4.0 | -0.9 | -4.2 | -0.7 | 1.4 | -0.3 | -0.1 | 2.5 | 9.0 | | |
| 2019 | 1.1 | 0.0 | 4.7 | -0.5 | 11.3 | 2.5 | -1.1 | -3.3 | 0.8 | 1.8 | -13.5 | | |
| 2020 | 0.5 | 1.0 | 1.8 | -0.9 | 2.4 | 6.5 | 1.1 | -0.7 | 2.0 | 0.6 | -25.4 | | |
| 2021 | 6.0 | 1.5 | 1.9 | -3.2 | 6.8 | -0.1 | 3.6 | 0.5 | 3.1 | 1.7 | 7.5 | | |
| 2022 | 6.6 | 1.5 | 3.3 | 1.6 | 3.0 | -18.5 | 7.1 | 2.6 | 5.2 | -1.4 | 71.2 | | |
| 2023 ^P | -0.1 | 3.1 | 2.9 | 3.0 | -2.5 | -24.9 | 3.3 | 0.8 | 6.4 | -0.8 | 53.8 | | |
| 2022 | MEI | MAY | 8.3 | 0.7 | 2.7 | 2.9 | -0.7 | -16.0 | 8.3 | 3.5 | 5.5 | -1.4 | 69.2 |
| | JUN | JUN | 5.5 | 1.3 | 2.9 | 2.9 | -12.6 | -11.9 | 8.2 | 3.2 | 4.9 | -1.5 | 83.9 |
| | JUL | JUL | 6.8 | 1.6 | 4.0 | 2.4 | -7.1 | -7.8 | 8.9 | 3.2 | 4.8 | -1.4 | 71.4 |
| | OGOS | AUG | 6.0 | 2.3 | 3.2 | 1.6 | 3.6 | -21.4 | 7.9 | 2.1 | 3.8 | -1.6 | 97.1 |
| | SEP | SEP | 6.8 | 2.2 | 3.9 | 1.6 | 11.5 | -29.1 | 7.7 | 2.4 | 4.0 | -1.4 | 91.7 |
| | OKT | OCT | 5.3 | 2.5 | 3.4 | 0.7 | 9.6 | -33.4 | 6.8 | 2.7 | 4.6 | -1.8 | 107.8 |
| | NOV | NOV | 4.3 | 2.9 | 3.2 | -0.5 | 5.1 | -32.1 | 6.3 | 3.4 | 5.9 | -1.6 | 86.2 |
| | DIS | DEC | 4.2 | 2.8 | 3.7 | -0.8 | 3.9 | -23.4 | 6.1 | 2.7 | 7.3 | -2.4 | 99.6 |
| 2023 | JAN | JAN | 2.2 | 2.6 | 4.4 | -0.5 | -1.9 | -19.0 | 5.2 | 2.4 | 6.5 | -2.0 | 58.9 |
| | FEB | FEB | -0.2 | 2.3 | 4.6 | -0.2 | -5.6 | -23.0 | 5.2 | 1.3 | 4.0 | -2.2 | 84.0 |
| | MAC | MAR | -1.9 | 3.1 | 4.5 | -0.4 | -10.0 | -25.2 | 5.2 | 0.9 | 4.8 | -1.1 | 106.8 |
| | APR | APR | -0.2 | 3.4 | 4.2 | 1.3 | -2.1 | -27.6 | 4.6 | -0.2 | 8.5 | -1.1 | 87.2 |
| | MEI | MAY | -1.2 | 3.1 | 4.7 | 2.2 | 3.7 | -23.9 | 3.3 | 0.3 | 6.6 | -1.9 | 31.7 |
| | JUN | JUN | -0.3 | 4.1 | 4.8 | 4.1 | 10.1 | -30.9 | 2.9 | 0.9 | 6.1 | -1.3 | 47.1 |
| | JUL | JUL | -1.0 | 3.5 | 2.1 | 4.4 | 3.6 | -35.1 | 2.1 | 0.9 | 8.8 | -0.1 | 38.0 |
| | OGOS | AUG | -1.3 | 2.8 | 2.1 | 4.5 | -7.2 | -30.8 | 2.0 | 1.0 | 8.1 | -0.9 | 36.1 |
| | SEP | SEP | -2.1 | 2.9 | 1.1 | 3.5 | -15.5 | -23.8 | 2.3 | 0.9 | 7.7 | 0.0 | 57.5 |
| | OKT | OCT | -0.8 | 3.0 | 1.1 | 4.1 | -12.1 | -19.9 | 2.2 | 0.9 | 6.8 | 0.1 | 52.0 |
| | NOV | NOV | 2.6 | 2.9 | 0.7 | 6.2 | 3.8 | -12.9 | 2.2 | 0.2 | 4.5 | -0.1 | 61.5 |
| | DIS | DEC | 3.0 | 3.9 | 0.3 | 6.5 | 8.0 | -20.9 | 2.1 | 0.5 | 4.2 | 1.0 | 23.7 |
| 2024 | JAN | JAN | 2.7 | 5.1 | 0.2 | 6.7 | 6.7 | -21.9 | 2.4 | 0.0 | 2.8 | 1.6 | 40.1 |
| | FEB | FEB | 3.4 | 6.8 | 1.3 | 7.0 | 6.2 | -19.3 | 3.4 | 1.2 | 3.7 | 2.4 | 32.3 |
| | MAC | MAR | 4.4 | 7.0 | 1.8 | 7.5 | 10.9 | -17.3 | 3.3 | 0.8 | 3.9 | 2.3 | 8.2 |
| | APR | APR | 3.0 | 7.7 | 4.2 | 6.9 | 11.6 | -14.1 | 3.3 | 1.1 | -1.2 | 2.2 | 26.1 |
| | MEI ^P | MAY ^P | 3.6 | 8.5 | 4.6 | 7.3 | 4.8 | -15.8 | 3.8 | 0.01 | 1.5 | 2.8 | 59.8 |

JADUAL 6 : INDEKS VOLUM EKSPORT - ASAL & PELARASAN MUSIM (2010=100)
TABLE 6 : EXPORT VOLUME INDICES - ACTUAL & SEASONALLY ADJUSTED (2010=100)

| TEMPOH PERIOD | | ASAL ACTUAL | % PERUBAHAN BULAN KE BULAN % CHANGE MONTH-ON-MONTH | PELARASAN MUSIM SEASONALLY ADJUSTED | % PERUBAHAN BULAN KE BULAN % CHANGE MONTH-ON-MONTH | |
|------------------|------------------|------------------|---|--|---|-------|
| 2021 | MEI | MAY | 142.7 | -13.2 | 143.1 | -6.4 |
| | JUN | JUN | 159.8 | 11.9 | 156.2 | 9.2 |
| | JUL | JUL | 145.4 | -9.0 | 134.9 | -13.6 |
| | OGOS | AUG | 140.7 | -3.2 | 139.9 | 3.7 |
| | SEP | SEP | 164.0 | 16.5 | 152.9 | 9.2 |
| | OKT | OCT | 167.0 | 1.9 | 144.7 | -5.3 |
| | NOV | NOV | 162.2 | -2.9 | 152.2 | 5.2 |
| | DIS | DEC | 178.8 | 10.2 | 154.4 | 1.4 |
| 2022 | JAN | JAN | 157.5 | -11.9 | 155.6 | 0.8 |
| | FEB | FEB | 141.3 | -10.2 | 159.1 | 2.3 |
| | MAC | MAR | 174.6 | 23.6 | 170.0 | 6.9 |
| | APR | APR | 167.6 | -4.1 | 162.1 | -4.7 |
| | MEI | MAY | 152.5 | -9.0 | 158.2 | -2.4 |
| | JUN | JUN | 181.9 | 19.3 | 188.6 | 19.2 |
| | JUL | JUL | 166.7 | -8.4 | 162.4 | -13.9 |
| | OGOS | AUG | 179.5 | 7.7 | 189.1 | 16.4 |
| | SEP | SEP | 181.1 | 0.9 | 179.4 | -5.1 |
| | OKT | OCT | 165.8 | -8.5 | 153.8 | -14.3 |
| | NOV | NOV | 164.0 | -1.1 | 166.1 | 8.0 |
| | DIS | DEC | 171.2 | 4.4 | 160.9 | -3.1 |
| 2023 | JAN | JAN | 148.5 | -13.3 | 149.8 | -6.9 |
| | FEB | FEB | 149.6 | 0.7 | 167.5 | 11.8 |
| | MAC | MAR | 171.1 | 14.4 | 165.1 | -1.4 |
| | APR | APR | 139.4 | -18.5 | 136.3 | -17.4 |
| | MEI | MAY | 158.6 | 13.8 | 170.1 | 24.8 |
| | JUN | JUN | 164.4 | 3.7 | 157.7 | -7.3 |
| | JUL | JUL | 155.1 | -5.7 | 155.8 | -1.2 |
| | OGOS | AUG | 152.0 | -2.0 | 161.1 | 3.4 |
| | SEP | SEP | 161.7 | 6.4 | 154.3 | -4.2 |
| | OKT | OCT | 162.1 | 0.2 | 155.8 | 0.9 |
| | NOV | NOV | 153.3 | -5.4 | 155.4 | -0.3 |
| | DIS | DEC | 150.5 | -1.9 | 140.8 | -9.4 |
| 2024 | JAN | JAN | 156.4 | 4.0 | 163.5 | 16.1 |
| | FEB | FEB | 142.2 | -9.1 | 156.8 | -4.1 |
| | MAC | MAR | 161.5 | 13.5 | 152.8 | -2.6 |
| | APR | APR | 144.6 | -10.5 | 141.7 | -7.2 |
| | MEI ^P | MAY ^P | 160.5 | 11.0 | 172.5 | 21.7 |

JADUAL 7 : INDEKS VOLUM IMPORT - ASAL & PELARASAN MUSIM (2010=100)
TABLE 7 : IMPORT VOLUME INDICES - ACTUAL & SEASONALLY ADJUSTED (2010=100)

| TEMPOH PERIOD | | ASAL ACTUAL | % PERUBAHAN BULAN KE BULAN % CHANGE MONTH-ON-MONTH | PELARASAN MUSIM SEASONALLY ADJUSTED | % PERUBAHAN BULAN KE BULAN % CHANGE MONTH-ON-MONTH | |
|------------------|------------------|------------------|---|--|---|-------|
| 2021 | MEI | MAY | 152.0 | -8.8 | 152.2 | -5.4 |
| | JUN | JUN | 160.3 | 5.5 | 167.4 | 10.0 |
| | JUL | JUL | 159.0 | -0.9 | 155.9 | -6.9 |
| | OGOS | AUG | 140.0 | -11.9 | 139.5 | -10.5 |
| | SEP | SEP | 160.4 | 14.6 | 162.4 | 16.4 |
| | OKT | OCT | 165.5 | 3.2 | 162.4 | 0.0 |
| | NOV | NOV | 174.2 | 5.2 | 169.5 | 4.4 |
| | DIS | DEC | 173.0 | -0.7 | 166.8 | -1.6 |
| 2022 | JAN | JAN | 173.7 | 0.4 | 170.2 | 2.1 |
| | FEB | FEB | 152.6 | -12.2 | 170.5 | 0.1 |
| | MAC | MAR | 190.2 | 24.6 | 190.5 | 11.7 |
| | APR | APR | 183.8 | -3.4 | 177.0 | -7.1 |
| | MEI | MAY | 185.0 | 0.7 | 185.6 | 4.8 |
| | JUN | JUN | 204.6 | 10.6 | 213.5 | 15.1 |
| | JUL | JUL | 199.6 | -2.4 | 195.8 | -8.3 |
| | OGOS | AUG | 213.5 | 6.9 | 213.4 | 9.0 |
| | SEP | SEP | 193.1 | -9.6 | 195.5 | -8.4 |
| | OKT | OCT | 193.9 | 0.4 | 189.6 | -3.0 |
| | NOV | NOV | 184.3 | -5.0 | 179.7 | -5.3 |
| | DIS | DEC | 182.1 | -1.2 | 175.3 | -2.4 |
| 2023 | JAN | JAN | 168.3 | -7.6 | 165.6 | -5.6 |
| | FEB | FEB | 164.6 | -2.2 | 184.2 | 11.2 |
| | MAC | MAR | 181.6 | 10.3 | 175.6 | -4.6 |
| | APR | APR | 164.6 | -9.4 | 157.6 | -10.3 |
| | MEI | MAY | 185.0 | 12.4 | 186.5 | 18.4 |
| | JUN | JUN | 174.6 | -5.6 | 174.8 | -6.3 |
| | JUL | JUL | 177.7 | 1.8 | 174.2 | -0.3 |
| | OGOS | AUG | 173.1 | -2.6 | 170.4 | -2.2 |
| | SEP | SEP | 174.3 | 0.7 | 178.4 | 4.7 |
| | OKT | OCT | 196.5 | 12.7 | 197.0 | 10.4 |
| | NOV | NOV | 191.3 | -2.6 | 188.8 | -4.1 |
| | DIS | DEC | 188.9 | -1.3 | 189.8 | 0.5 |
| 2024 | JAN | JAN | 199.0 | 5.4 | 208.0 | 9.6 |
| | FEB | FEB | 175.6 | -11.7 | 193.7 | -6.9 |
| | MAC | MAR | 203.1 | 15.6 | 192.2 | -0.8 |
| | APR | APR | 186.3 | -8.3 | 182.6 | -5.0 |
| | MEI ^P | MAY ^P | 205.5 | 10.3 | 220.9 | 20.9 |



3. NOTA TEKNIKAL
TECHNICAL NOTE

NOTA TEKNIKAL

1. PENGENALAN

- 1.1 Indeks Perdagangan Luar Negeri (IPLN) mengukur perubahan paras nilai seunit serta volum eksport dan import barangan Malaysia. Indeks ini mencerminkan peratusan kenaikan atau penurunan dalam paras nilai seunit dan volum.
- 1.2 IPLN telah disusun buat kali pertama dengan menggunakan tahun 1970 sebagai tahun asas (1970=100) dan seterusnya diikuti dengan 1999=100, 2005=100 dan 2010 =100 mulai penerbitan bagi bulan rujukan Januari 2016.
- 1.3 Mulai penerbitan keluaran bulan rujukan Januari 2018, IPLN telah dikemaskini menggunakan "bakul" barangan tahun 2013 dengan mengekalkan tahun asas yang sama, 2010=100. Seterusnya, IPLN (2010=100) dikemaskini sekali lagi menggunakan "bakul" barangan tahun 2015 bermula daripada penerbitan bulan rujukan Januari 2019.

2. OBJEKTIF

- 2.1 Indeks nilai seunit dan volum adalah penunjuk ekonomi utama yang mempunyai pelbagai kegunaan.
- 2.2 Berikut adalah kegunaan utama indeks ini:
 - 2.2.1 Ia mengukur setakat mana perubahan nilai eksport dan import adalah disebabkan oleh perubahan dalam nilai seunit dan perubahan volum.
 - 2.2.2 Ia membolehkan penggubal dasar menilai kesan harga eksport berbanding dengan harga import barangan (yang mana lebih dikenali sebagai terma perdagangan).
 - 2.2.3 Ia boleh digunakan untuk membuat unjuran untuk memastikan perubahan harga, output dan sebagainya yang mungkin berlaku pada masa depan. Perbandingan dan unjuran ini akan memudahkan keputusan dibuat di peringkat syarikat, industri dan kerajaan.
 - 2.2.4 Ia juga dapat mengukur perubahan nilai benar import dan eksport Malaysia mengikut masa dengan menggunakan kaedah "*deflation*".

3. SUMBER DATA

Data yang digunakan dalam pengiraan indeks nilai seunit dan volum diperoleh daripada data perdagangan luar negeri Malaysia yang sebahagian besarnya diproses daripada borang pengiklanan kastam.

4. PROSEDUR PENGIRAAN

- 4.1 Prosedur yang digunakan untuk menghasilkan Indeks Nilai Seunit adalah seperti berikut:
 - i. Mengira nilai seunit bagi setiap barangan SITC yang terpilih;
 - ii. Mengira nilai seunit relatif;
 - iii. Mengira wajaran nilai;
 - iv. Mendarab setiap relatif dengan wajaran yang berkaitan;
 - v. Menjumlahkan hasil darab;
 - vi. Membahagikan hasil darab dengan jumlah wajaran.

- 4.2 Indeks nilai seunit relatif purata aritmetik yang berwajarkan nilai tempoh asas adalah bersamaan dengan indeks nilai seunit Laspeyres.

$$p^L = \frac{\sum p_n (p_o q_o)}{\sum (p_o q_o)} \times 100$$

di mana

| | | |
|-----------|---|---|
| p^L | = | Indeks nilai seunit Laspeyres; |
| p_n | = | Nilai seunit barangan pada tempoh tertentu; |
| p_o | = | Nilai seunit barangan pada tempoh asas; |
| $p_o q_o$ | = | Wajaran tahun asas |

- 4.3 Indeks volum eksport dan import adalah dihasilkan secara tidak langsung daripada pembahagian indeks nilai eksport dan import dengan indeks nilai seunit eksport dan import yang berkaitan. Dalam kes ini, indeks volum yang dibentuk adalah indeks volum Paasche.

- 4.4 Berkuatkuasa mulai penerbitan bulan rujukan Januari 2019, kaedah indeks rantaian Laspeyres akan digunakan dalam pengiraan IPLN (2010=100) dengan menggunakan Disember 2018 sebagai bulan pautan.

IPLN dihitung sebagai indeks rantaian bakul tetap. Ini bermakna bahawa urutan indeks bakul tetap dirantai bersama untuk mewujudkan satu siri masa yang berterusan. Perkara ini perlu untuk mengelakkan perubahan yang tidak dijangka dalam indeks apabila pengemaskinian bakul dilakukan.

Indeks nilai seunit bulan rujukan dihitung berdasarkan perubahan indeks bulan tersebut kepada bulan pautan (bakul baru) didarabkan dengan indeks bulan pautan (bakul lama).

$$P_{t/10}^{ch} = P_{t/D18}^{baru} \times P_{D18/10}^{lama}$$

di mana,

| | | |
|---------------------|---|---|
| $P_{t/10}^{ch}$ | = | Indeks rantaian yang mengukur perubahan nilai seunit dari 2010 kepada sebarang tempoh t |
| $P_{t/D18}^{baru}$ | = | Indeks komposit siri baru yang membandingkan nilai seunit pada sebarang tempoh t kepada bulan pautan |
| $P_{D18/10}^{lama}$ | = | Indeks komposit siri lama yang membandingkan nilai seunit bagi Disember 2018 kepada nilai seunit 2010 |

- 4.5 Dalam pengiraan indeks, tarif individu telah dikelaskan mengikut *Standard International Trade Classification, Revision 4 (S.I.T.C. Rev 4)* daripada Pertubuhan Bangsa-Bangsa Bersatu.

- 4.6 Indeks import menggunakan nilai 'kos, insuran dan tambang' (*c.i.f.*), sementara indeks eksport dikira menggunakan nilai 'free on board' (*f.o.b.*).

- 4.7 Indeks ini disusun dengan menggunakan tahun 2010 sebagai asas. Siri indeks adalah seperti berikut:

| | |
|-----|-----------------------------|
| i | Indeks nilai seunit eksport |
| ii | Indeks volum eksport |
| iii | Indeks nilai seunit import |
| iv | Indeks volum import |
| v | Indeks terma perdagangan |

4.8 Indeks ini disusun setiap bulan manakala indeks tahunan dikira berdasarkan data siri bulanan.

4.9 Indeks ini akan disebarakan di peringkat SITC-1-digit dan Malaysia.

5. LIPUTAN

Sebanyak 786 barangan eksport yang mewakili kira-kira 84.4 peratus daripada jumlah nilai eksport yang dicatatkan pada tahun 2015 dan 1,583 barangan import yang meliputi kira-kira 83.0 peratus daripada jumlah nilai import tahun 2015 masing-masing digunakan dalam pengiraan indeks import dan eksport.

6. WAJARAN

Wajaran yang digunakan dalam jenis indeks ini adalah nilai. Data yang digunakan untuk menghasilkan wajaran ini adalah daripada nilai import dan eksport barang dagangan Malaysia tahun 2015. Wajaran yang diagihkan adalah mengikut nilai tersebut pada peringkat SITC-1-digit.

7. KONSEP DAN DEFINISI

7.1 Indeks Nilai Seunit

Perubahan harga dalam perdagangan barangan luar negeri ditunjukkan oleh perubahan indeks nilai seunit perdagangan barangan luar negeri yang disusun berdasarkan nilai seunit.

Jadual 1A, 1B dan 1C menyediakan ringkasan perubahan nilai seunit eksport dan Jadual 3A, 3B dan 3C pula, indeks nilai seunit import. Arah aliran komponen nilai seunit adalah ditunjukkan dalam indeks ini, yang mana menyatakan hubungan di antara nilai tempoh semasa dan tempoh asas bagi sesuatu bakul yang mengandungi volum barangan tertentu.

7.2 Indeks Volum

Perubahan volum perdagangan barangan luar negeri diperoleh daripada perubahan nilai perdagangan barangan luar negeri setelah dikeluarkan kesan perubahan harga.

Jadual 2A, 2B dan 2C menyediakan ringkasan perubahan indeks volum eksport dan Jadual 4A, 4B dan 4C, indeks volum import. Arah aliran komponen volum adalah ditunjukkan dalam indeks ini, yang mana menyatakan hubungan di antara nilai tempoh semasa dan tempoh asas bagi satu set nilai seunit tertentu.

7.3 Terma Perdagangan.

Indeks nilai seunit eksport dan import boleh digunakan untuk mengukur terma perdagangan Malaysia. Indeks terma perdagangan dikira berasaskan kepada nisbah indeks nilai seunit eksport kepada indeks nilai seunit import.

Jadual 5A, 5B dan 5C menyediakan ringkasan perubahan indeks terma perdagangan. Indeks ini dikira dengan mendapatkan nisbah indeks nilai seunit eksport kepada indeks nilai seunit import. Ia menggambarkan kos sesuatu volum yang diimport dari segi volum yang dieksport. Suatu kenaikan dalam terma perdagangan menunjukkan pergerakan yang lebih menguntungkan dan kejatuhan membawa kesan yang sebaliknya. Satu nilai indeks yang lebih atau kurang daripada 100 mencerminkan terma perdagangan yang lebih atau kurang menguntungkan berbanding dengan terma perdagangan tahun asasnya 2010.

8. METODOLOGI

- 8.1 Proses pemadanan kod dilaksanakan bagi menyelaraskan kod *Harmonization System* (HS) 2017 dengan HS2022 yang digunakan bermula Jun 2022.
- 8.2 *Lumpy import* (seperti import kapal terbang dan kapal) adalah tidak termasuk dalam penyusunan.
- 8.3 Kod produk yang mempunyai transaksi kurang dari 7 bulan dalam setahun juga tidak diambil kira.

9. PELARASAN MUSIM

Data siri masa adalah amat berguna untuk ahli ekonomi, pembuat dasar & polisi dan penganalisis siri masa untuk mengenal pasti ciri-ciri penting siri ekonomi seperti arah, *turning point* dan konsistensi antara penunjuk ekonomi yang lain. Kadangkala ciri ini sukar untuk diperhatikan kerana pergerakan bermusim. Oleh itu, sekiranya kesan bermusim boleh disingkirkan, perilaku data siri ini dapat dilihat dengan lebih baik. Anggaran dan penyingkiran kesan bermusim dipanggil **pelarasan bermusim**.

Pelarasan bermusim adalah satu proses untuk mengenal pasti dan menyingkirkan bentuk pola bermusim yang biasa berlaku dalam tempoh satu tahun, yang mungkin juga merangkumi pengaruh dari kesan cuti yang bergerak dan hari bekerja/ berdagang bagi suatu tempoh. Objektif utama proses ini adalah untuk menyerlahkan arah aliran dan pergerakan-pergerakan jangka pendek dalam siri ini.

Di Malaysia, kebanyakan data siri masa terjejas oleh kesan bermusim. Oleh itu, untuk menghapuskan kesan bermusim dan juga melaras musim data siri masa ekonomi Malaysia, X-12 ARIMA telah digunakan sebagai pakej pelarasan bermusim standard oleh Jabatan Perangkaan, Malaysia.

Data siri masa ekonomi Malaysia kerap dipengaruhi oleh perayaan agama utama seperti Aidil Fitri, Tahun Baru Cina dan Deepavali. Tarikh perayaan ini tetap mengikut tahun lunar tetapi berbeza-beza mengikut kalendar Gregorian. Oleh itu, untuk menganggar dan menyingkirkan kesan cuti yang bergerak dari data siri masa, satu prosedur telah dibangunkan iaitu Seasonal Adjustment For Malaysia (SEAM).

Kaedah SEAM digunakan untuk membuang kesan bermusim bagi data indeks perdagangan luar negeri Malaysia. Pelarasan musim hanya dibuat ke atas data bulanan bagi indeks volum eksport dan indeks volum import. Siri data pelarasan bermusim untuk tiga tahun sebelumnya akan disemak setiap tahun apabila data untuk 12 bulan lengkap.

10. DASAR PINDAAN

Dasar bulan semasa adalah provisional (p) dan tertakluk kepada pindaan sehingga ia dimuktamadkan. Pindaan dibuat sekiranya wujud maklumat tambahan. Data muktamad perangkaan Perdagangan Luar Negeri 2022 telah digunakan bermula penerbitan Jun 2023 bagi perubahan dalam indeks volum yang menggunakan kaedah Paasche.

TECHNICAL NOTES

1. INTRODUCTION

- 1.1 *External trade indices (ETI) measure changes in the levels of unit values and volumes of Malaysia's imports and exports. The index numbers, which reflect the percentage rise or fall of unit value and volume levels.*
- 1.2 *ETI were first constructed with 1970 as the base year (1970=100) and then base year 1999=100 and 2005=100 subsequently. Currently the indices are rebased to 2010=100, commencing from reference month January 2016.*
- 1.3 *Commencing in reference month of January 2018, ETI was updated using the "basket" of goods for year 2013 by maintaining the same base year, 2010 = 100. Subsequently, ETI (2010=100) has been updated again using the 2015 "basket" of goods starting from reference month January 2019.*

2. OBJECTIVE

- 2.1 *The external trade unit value and volume indices are key economic indicators which have a variety of applications and uses.*
- 2.2 *The following are the main uses of these indices:*
 - 2.2.1 *They provide a measure of the extent to which changes in the values of exports and imports are due to changes in price/unit value levels and the extent to which value changes are accounted for by volume changes.*
 - 2.2.2 *They enable policy makers to assess the effects of price change in exports with those in imports (which is referred to as terms of trade) for commodities.*
 - 2.2.3 *They can be utilized for making projections to ascertain likely future changes in prices, output and so on. These comparisons and projections facilitate decision making at company, industry and government level.*
 - 2.2.4 *They also measure the changes in the real value of Malaysian imports or exports over time using the deflation method.*

3. SOURCES OF DATA

Data used in calculating the export and import unit value and volume indices is derived from Malaysia external trade data which is in turn mainly processed from import and export custom declaration forms.

4. COMPUTATIONAL PROCEDURE

- 4.1 *The procedure used to derive Unit Value Index is as follows:*
 - I. *Compute unit values for each selected SITC commodity item;*
 - II. *Compute unit value relatives;*
 - III. *Compute value weights;*
 - IV. *Multiply each relative by the corresponding weight;*
 - V. *Total the product;*
 - VI. *Divide these totals by the sum of the weights.*

- 4.2 The weighted arithmetic mean of relative unit value index, in which the weights are equal to base-period values, is equivalent to Laspeyres unit value index:

$$p^L = \frac{\sum \frac{P_n}{P_o} (p_o q_o)}{\sum (p_o q_o)} \times 100$$

where

| | | |
|-----------|---|--|
| p^L | = | Laspeyres unit value index; |
| p_n | = | Commodity unit values in the given period; |
| p_o | = | Commodity unit values in the base period; |
| $p_o q_o$ | = | Base year weights |

- 4.3 Volume indices for exports and imports are derived indirectly by deflating indices of values of exports and imports with the corresponding export and import unit value indices. In this case, the resulting indirect volume index will be Paasche volume index.

- 4.4 Effective from the reference month for January 2019, Laspeyres chain index method will be used in the calculation of the ETI which employs December 2018 as the link month.

ETI are calculated as a chain of fixed-basket indices. This means that a sequence of fixed-basket indices have been chained together to create a continuous time series. This is necessary to avoid having breaks in an index when a basket update is performed.

Unit value indices for reference month are calculated based on changes of index for that month over the link month (new basket) multiplied by the link month index (old basket).

$$P_{t/10}^{ch} = P_{t/D18}^{new} \times P_{D18/10}^{old}$$

where,

| | | |
|--------------------|---|---|
| $P_{t/10}^{ch}$ | = | Chain index which measures the changes in unit value from 2010 to any period |
| $P_{t/D18}^{new}$ | = | A new series composite index that compares the unit value at any period t to the link month |
| $P_{D18/10}^{old}$ | = | the old series composite index which compares the unit value for December 2018 to the 2010 unit value |

- 4.5 Import indices use 'cost, insurance and freight' (c.i.f.) values, while export indices are calculated using 'free on board' (f.o.b.) values.

- 4.6 The indices are compiled using the year 2010 as the base. These series relate to:

- i Unit value indices of exports
- ii Volume indices of exports
- iii Unit value indices of imports
- iv Volume indices of imports
- v Terms of trade indices

- 4.7 These indices are compiled for each calendar month while the annual indices are computed from the monthly series.

- 4.8 The indices will be disseminated at the 1-digit SITC section.

5. **COVERAGE**

Approximately 786 export items representing about 84.4 percent of the total value of exports recorded in 2015 and 1,583 import items accounting for about 83.0 percent of the total value of imports in 2015 are used in the calculation of the index of imports and exports, respectively.

6. **WEIGHT**

The weights used in this type of index are values. The data used to derive the weights are the values of Malaysia imports and exports of merchandise during 2015. Weights are allocated in accordance with these values at 1-digit SITC level.

7. **CONCEPT AND DEFINITIONS**

7.1 *Unit Value Indices*

Price changes in external merchandise trade are reflected by changes in unit value indices of external merchandise trade which are compiled based on unit value.

Table 1A, 1B and 1C provides a summary of changes in the export unit value indices and Table 3A, 3B and 3C, of the import unit value indices. Trends in unit value component are illustrated by these indices, which expresses the relationship between value in the current period and the value in the base period of a given basket containing specific quantities of goods.

7.2 *Volume Indices*

Changes in volume of external merchandise trade are derived from changes in external merchandise trade value with the effect of price changes that has been discounted.

Table 2A, 2B and 2C provides a summary of the export volume indices and Table 4A, 4B and 4C, of the import volume indices. Trends in the quantity component are illustrated by this index, which expresses the relationship between the value of a given set of unit values for the current period and the value for the base period.

7.3 *Terms of Trade*

The export and import unit value indices can be used to measure the Malaysia's terms of trade. The terms of trade index is calculated based on the ratio of unit value index of exports to the unit value index of imports.

Table 5A, 5B and 5C provides a summary of changes in the terms of trade indices. The index is calculated as the ratio of the export unit value index to the import unit value index. It represents the cost of a given volume of imports in terms of exports. A rise in the terms of trade indicates a favourable movement and a fall, an adverse movement. An index value above or below 100 indicates the terms of trade are either more or less favorable than the 2010 base period.

8. **METHODOLOGY**

8.1 *The process of mapping the code has been implemented to streamline the code Harmonization System (HS) 2017 to HS2022 which was in use from June 2022.*

8.2 *Lumpy imports (such as import of aircraft and vessel) are excluded from the compilation.*

8.3 *The product codes which have less than seven transactions in a year are also excluded.*

9. SEASONAL ADJUSTMENT

Time-series data are very useful for economists, policy & decision makers and time-series analysts to identify the important features of economic series such as direction, turning point and consistency between other economic indicators. Sometimes this feature is difficult to observe because of seasonal movements. Thus, if the seasonal effect can be removed, the behaviour of the series would be better viewed. The estimation and removal of the seasonal effects is called seasonal adjustment.

Seasonal adjustment is a process to identify and to remove the regular within-a-year seasonal pattern, which may also include the influences of moving holidays and working/trading days effect in each period. The ultimate objective of the process is to highlight the underlying trends and short-term movements in the series.

In Malaysia, most of the time series data are affected by seasonal effects. Hence, to eliminate the seasonal effect as well as to seasonally adjust the Malaysian economic time series data, X-12 ARIMA was used as a standard seasonal adjustment package by Department of Statistics, Malaysia.

Malaysian economic time series data are often affected by major religious festivals such as Eid-ul Fitr, Chinese New Year and Deepavali. These festivals' dates are fixed according to the lunar year but vary according to the Gregorian calendar. Therefore, to estimate and remove moving holiday effect from time-series data, a procedure was developed, namely Seasonal Adjustment for Malaysia (SEAM).

The SEAM method is used to remove seasonal effect for Malaysia's external trade indices data. The seasonal adjustment is only carried out on monthly export and import volume indices. The seasonally adjusted series data for the preceding three years are revised each year when the figures for complete 12 months become available.

10. REVISION POLICY

Data for the current month is provisional(p) and subject to revision until it is finalized. Revisions are made if there are additional information. Final data external trade statistics 2022 has been used starting from the June 2023 publication for the change in volume index using Paasche index method.

The background features a light brown world map on a white surface. The map is partially obscured by several overlapping, semi-transparent green rectangular bars of varying shades and orientations, creating a modern, layered effect. The text is centered over the map.

4. LAMPIRAN

APPENDIX

**PERBANDINGAN WAJARAN MENGIKUT SEKSYEN ANTARA BAKUL 2013 DAN 2015 YANG DIGUNAKAN DALAM
INDEKS PERDAGANGAN LUAR NEGERI, IPLN (2010=100)**

*COMPARISON OF WEIGHTS BY SECTIONS BETWEEN 2013 AND 2015 BASKETS USED IN THE EXTERNAL TRADE INDEX,
ETI (2010=100)*

| SEKSYEN SECTIONS | WAJARAN WEIGHTS | | | |
|---|--------------------|--------------|-------------------|--------------|
| | EKSPORT EXPORTS | | IMPORT IMPORTS | |
| | 2013 | 2015 | 2013 | 2015 |
| 0 Makanan <i>Food</i> | 3.0 | 3.520 | 6.2 | 6.839 |
| 1 Minuman & Tembakau <i>Beverages and Tobacco</i> | 0.5 | 0.600 | 0.6 | 0.662 |
| 2 Bahan Mentah Tidak Boleh Dimakan <i>Inedible Crude Materials</i> | 2.6 | 2.725 | 3.8 | 3.351 |
| 3 Minyak Galian <i>Mineral Fuels</i> | 22.7 | 16.097 | 17.3 | 12.865 |
| 4 Minyak & Lemak Binatang & Sayur-sayuran <i>Animal & Vegetable Oils & Fats</i> | 6.9 | 6.016 | 0.7 | 1.070 |
| 5 Bahan Kimia <i>Chemicals</i> | 7.2 | 7.781 | 9.6 | 10.513 |
| 6 Barang-barang Keluaran Kilang <i>Manufactured Goods</i> | 9.3 | 9.647 | 13.7 | 13.371 |
| 7 Alat Jentera & Kelengkapan Pengangkutan <i>Machinery & Transport Equipment</i> | 37.9 | 42.255 | 40.1 | 41.794 |
| 8 Pelbagai Barang Keluaran Kilang <i>Miscellaneous Manufactured Articles</i> | 9.3 | 10.929 | 6.0 | 7.572 |
| 9 Pelbagai Urusniaga & Barangan <i>Miscellaneous Transactions & Commodities</i> | 0.6 | 0.430 | 2.0 | 1.963 |
| JUMLAH <i>Total</i> | 100.0 | 100.0 | 100.0 | 100.0 |

JADUAL: JADUAL TARIKH PENGELUARAN INDEKS PERDAGANGAN LUAR NEGERI (2010=100), JANUARI - DISEMBER 2024

TABLE: SCHEDULE OF RELEASE DATES FOR EXTERNAL TRADE INDICES (2010=100), JANUARY - DECEMBER 2024

| BULAN RUJUKAN REFERENCE MONTH | | TARIKH PENGELUARAN PENERBITAN RELEASE DATES OF PUBLICATION | |
|---|----|--|-------------|
| JANUARI JANUARY | 28 | FEBRUARI FEBRUARY | 2024 |
| FEBRUARI FEBRUARY | 27 | MAC MARCH | 2024 |
| MAC MARCH | 26 | APRIL APRIL | 2024 |
| APRIL APRIL | 28 | MEI MAY | 2024 |
| MEI MAY | 28 | JUN JUNE | 2024 |
| JUN JUNE | 26 | JULAI JULY | 2024 |
| JULAI JULY | 28 | OGOS AUGUST | 2024 |
| OGOS AUGUST | 27 | SEPTEMBER SEPTEMBER | 2024 |
| SEPTEMBER SEPTEMBER | 28 | OKTOBER OCTOBER | 2024 |
| OKTOBER OCTOBER | 28 | NOVEMBER NOVEMBER | 2024 |
| NOVEMBER NOVEMBER | 27 | DISEMBER DECEMBER | 2024 |
| DISEMBER DECEMBER | 28 | JANUARI JANUARY | 2024 |

PENERBITAN INI AKAN DITERBITKAN DI LAMAN WEB JABATAN PERANGKAAN MALAYSIA
(<http://www.statistics.gov.my>) PADA TARIKH PENGELUARAN SELEPAS MASA EMBARGO (12.00 PM)

THIS PUBLICATION WILL BE POSTED ON THE WEBSITE OF THE DEPARTMENT OF STATISTICS MALAYSIA
(<http://www.statistics.gov.my>) ON THE RELEASE DATE AFTER THE EMBARGO TIME (12.00 PM)

ISSN 1675-4344



9 771675 434001



www.dosm.gov.my



@StatsMalaysia