



ISSN: 1949-1557

Released September 20, 2024, by the National Agricultural Statistics Service (NASS), Agricultural Statistics Board, United States Department of Agriculture (USDA).

August Milk Production up 0.1 Percent

Milk production in the 24 major States during August totaled 18.1 billion pounds, up 0.1 percent from August 2023. July revised production, at 18.2 billion pounds, was down 0.3 percent from July 2023. The July revision represented a decrease of 1 million pounds or less than 0.1 percent from last month's preliminary production estimate.

Production per cow in the 24 major States averaged 2,036 pounds for August, 8 pounds above August 2023.

The number of milk cows on farms in the 24 major States was 8.88 million head, 28,000 head less than August 2023, but unchanged from July 2024.

August Milk Production in the United States down 0.1 Percent

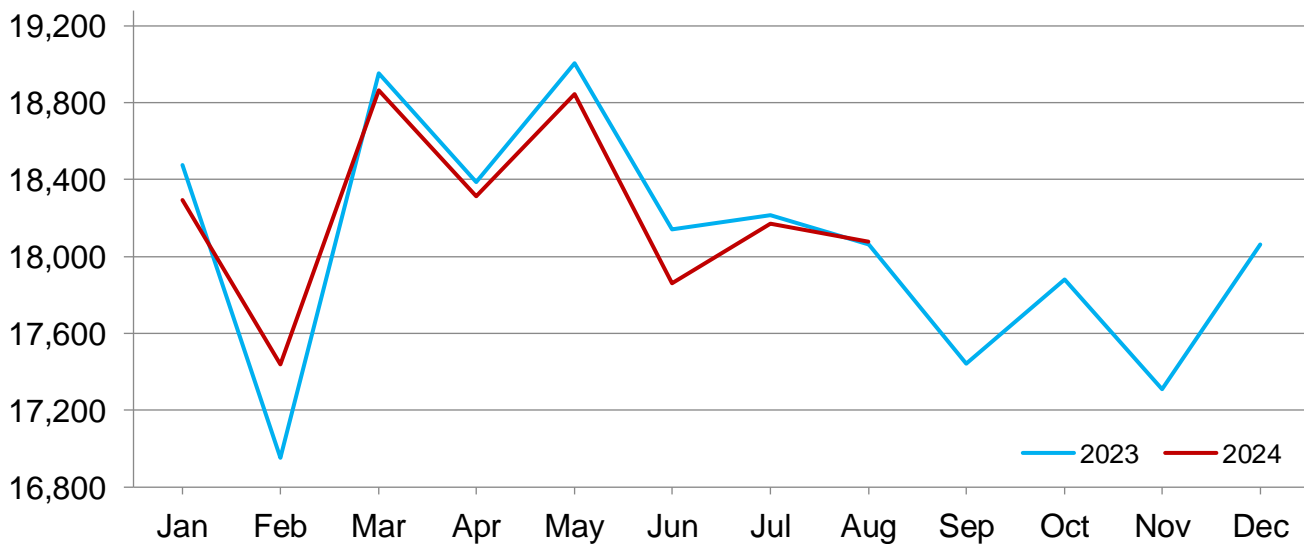
Milk production in the United States during August totaled 18.8 billion pounds, down 0.1 percent from August 2023.

Production per cow in the United States averaged 2,018 pounds for August, 8 pounds above August 2023.

The number of milk cows on farms in the United States was 9.33 million head, 40,000 head less than August 2023, but unchanged from July 2024.

Monthly Milk Production - 24 Selected States

Million pounds



Milk Cows and Production by Quarter – United States: 2023-2024

[May not add due to rounding. Blank data cells indicate estimation period has not yet begun]

Quarter	Milk cows ¹		Milk per cow ²		Milk production ²		Change from 2023
	2023	2024	2023	2024	2023	2024	
	(1,000 head)	(1,000 head)	(pounds)	(pounds)	(million pounds)	(million pounds)	(percent)
January-March	9,418	9,337	6,035	6,100	56,837	56,959	0.2
April-June	9,410	9,329	6,164	6,151	58,004	57,380	-1.1
July-September	9,366		5,978		55,994		
October-December	9,349		5,940		55,529		
Annual	9,386		24,117		226,364		

¹ Includes dry cows. Excludes heifers not yet fresh.

² Excludes milk sucked by calves.

Milk Cows and Production by Month – 24 Selected States: 2023-2024

[May not add due to rounding. Blank data cells indicate estimation period has not yet begun]

Month	Milk cows ¹		Milk per cow ²		Milk production ²		Change from 2023
	2023	2024	2023	2024	2023	2024	
	(1,000 head)	(1,000 head)	(pounds)	(pounds)	(million pounds)	(million pounds)	(percent)
January	8,922	8,870	2,071	2,062	18,474	18,294	-1.0
February	8,939	8,888	1,897	1,962	16,953	17,439	2.9
March	8,952	8,892	2,118	2,122	18,956	18,865	-0.5
April	8,941	8,888	2,056	2,061	18,386	18,314	-0.4
May	8,945	8,886	2,125	2,121	19,006	18,845	-0.8
June	8,925	8,875	2,033	2,013	18,141	17,863	-1.5
July	8,909	8,878	2,045	2,047	18,216	18,170	-0.3
August	8,906	8,878	2,028	2,036	18,065	18,076	0.1
September	8,907		1,958		17,444		
October	8,900		2,009		17,880		
November	8,891		1,947		17,311		
December	8,894		2,031		18,061		
Annual	8,919		24,318		216,893		

¹ Includes dry cows. Excludes heifers not yet fresh.

² Excludes milk sucked by calves.

Estimated Milk Cows and Production by Month – United States: 2023-2024

[May not add due to rounding. Blank data cells indicate estimation period has not yet begun]

Month	Milk cows ¹		Milk per cow ²		Milk production ²		Change from 2023
	2023	2024	2023	2024	2023	2024	
	(1,000 head)	(1,000 head)	(pounds)	(pounds)	(million pounds)	(million pounds)	(percent)
January	9,401	9,323	2,054	2,047	19,308	19,083	-1.2
February	9,419	9,343	1,881	1,947	17,718	18,195	2.7
March	9,433	9,346	2,100	2,106	19,811	19,681	-0.7
April	9,414	9,335	2,040	2,046	19,204	19,098	-0.6
May	9,418	9,333	2,108	2,106	19,852	19,652	-1.0
June	9,397	9,320	2,016	1,999	18,948	18,630	-1.7
July	9,368	9,325	2,027	2,028	18,985	18,915	-0.4
August	9,365	9,325	2,010	2,018	18,828	18,815	-0.1
September	9,366		1,941		18,181		
October	9,355		1,993		18,645		
November	9,345		1,932		18,051		
December	9,348		2,015		18,833		
Annual	9,386		24,117		226,364		

¹ Includes dry cows. Excludes heifers not yet fresh.

² Excludes milk sucked by calves.

Milk Cows and Production – 24 Selected States: August 2023 and 2024

[May not add due to rounding]

State	Milk cows ¹		Milk per cow ²		Milk production ²		Change from 2023
	2023	2024	2023	2024	2023	2024	
	(1,000 head)	(1,000 head)	(pounds)	(pounds)	(million pounds)	(million pounds)	(percent)
Arizona	201	189	1,850	1,840	372	348	-6.5
California	1,713	1,708	1,930	1,975	3,306	3,373	2.0
Colorado	198	200	2,200	2,180	436	436	-
Florida	99	99	1,605	1,620	159	160	0.6
Georgia	90	85	1,735	1,830	156	156	-
Idaho	666	667	2,175	2,180	1,449	1,454	0.3
Illinois	79	77	1,720	1,700	136	131	-3.7
Indiana	190	189	1,970	1,985	374	375	0.3
Iowa	240	241	2,065	2,060	496	496	-
Kansas	169	178	1,970	1,995	333	355	6.6
Michigan	439	436	2,335	2,345	1,025	1,022	-0.3
Minnesota	450	442	1,970	1,950	887	862	-2.8
New Mexico	270	239	2,005	2,010	541	480	-11.3
New York	630	630	2,195	2,170	1,383	1,367	-1.2
Ohio	253	252	1,890	1,910	478	481	0.6
Oregon	120	118	1,775	1,780	213	210	-1.4
Pennsylvania	466	465	1,755	1,725	818	802	-2.0
South Dakota	197	213	1,975	1,980	389	422	8.5
Texas	635	655	2,110	2,205	1,340	1,444	7.8
Utah	90	90	1,980	1,985	178	179	0.6
Vermont	117	113	1,845	1,815	216	205	-5.1
Virginia	68	66	1,730	1,715	118	113	-4.2
Washington	257	260	2,050	2,055	527	534	1.3
Wisconsin	1,269	1,266	2,155	2,110	2,735	2,671	-2.3
24-State Total	8,906	8,878	2,028	2,036	18,065	18,076	0.1

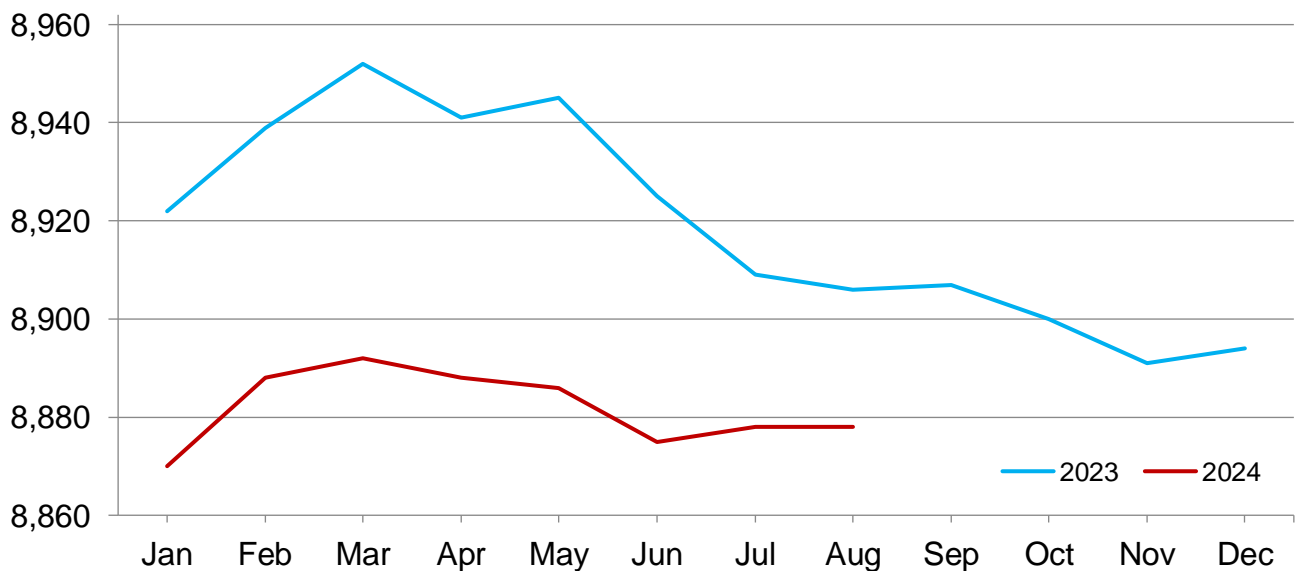
- Represents zero.

¹ Includes dry cows. Excludes heifers not yet fresh.

² Excludes milk sucked by calves.

Monthly Milk Cows - 24 Selected States

Thousand head



Milk Cows and Production – 24 Selected States: July 2023 and 2024

[May not add due to rounding]

State	Milk cows ¹		Milk per cow ²		Milk production ²		Change from 2023
	2023	2024	2023	2024	2023	2024	
	(1,000 head)	(1,000 head)	(pounds)	(pounds)	(million pounds)	(million pounds)	(percent)
Arizona	198	189	1,910	1,915	378	362	-4.2
California	1,714	1,708	1,940	1,940	3,325	3,314	-0.3
Colorado	200	200	2,205	2,155	441	431	-2.3
Florida	98	99	1,690	1,680	166	166	-
Georgia	90	85	1,780	1,845	160	157	-1.9
Idaho	666	667	2,195	2,200	1,462	1,467	0.3
Illinois	79	78	1,810	1,800	143	140	-2.1
Indiana	190	189	2,005	2,015	381	381	-
Iowa	242	241	2,100	2,085	508	502	-1.2
Kansas	169	177	1,985	2,000	335	354	5.7
Michigan	439	436	2,360	2,355	1,036	1,027	-0.9
Minnesota	451	442	2,000	1,980	902	875	-3.0
New Mexico	270	239	1,995	2,055	539	491	-8.9
New York	630	630	2,200	2,180	1,386	1,373	-0.9
Ohio	253	252	1,900	1,920	481	484	0.6
Oregon	120	117	1,800	1,805	216	211	-2.3
Pennsylvania	466	465	1,755	1,755	818	816	-0.2
South Dakota	197	213	1,985	1,980	391	422	7.9
Texas	635	653	2,110	2,175	1,340	1,420	6.0
Utah	91	90	2,000	2,010	182	181	-0.5
Vermont	117	114	1,840	1,820	215	207	-3.7
Virginia	68	66	1,740	1,730	118	114	-3.4
Washington	257	260	2,050	2,040	527	530	0.6
Wisconsin	1,269	1,268	2,180	2,165	2,766	2,745	-0.8
24-State Total	8,909	8,878	2,045	2,047	18,216	18,170	-0.3

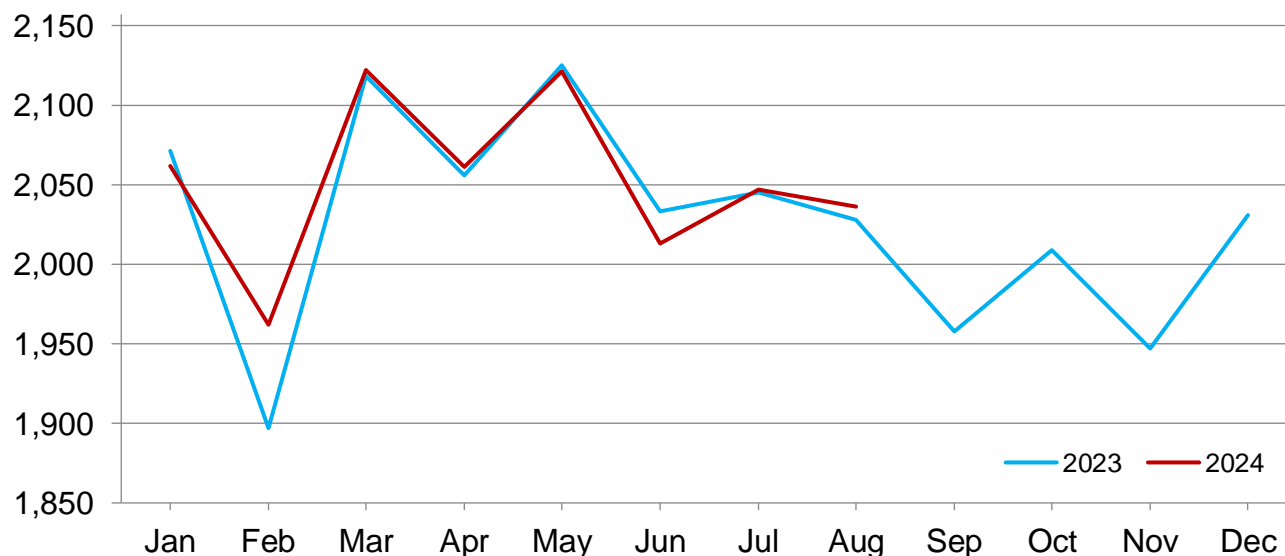
- Represents zero.

¹ Includes dry cows. Excludes heifers not yet fresh.

² Excludes milk sucked by calves.

Monthly Milk Per Cow - 24 Selected States

Pounds



Statistical Methodology

Survey Procedures: Primary data used to determine these estimates were obtained from a sample of producers. Individual States maintain a list of all known milk producers and information on the size of their herd. States use all known sources of producers to ensure that their lists are as complete as possible. Generally, all large producers and a sample of small producers are included in the survey. Questionnaires are mailed to producers near the end of the month to obtain data for the first day of the month. Additional reports are obtained by telephone, as needed, to supplement the mail response. Where feasible, States utilize state and federal administrative data to estimate milk production. This eliminates duplication of data gathering by different government agencies such as Agricultural Marketing Service (AMS) Dairy Market News. Indications of milk cow inventory are also obtained in the January Cattle Survey.

Estimation Procedures: Regional Field Offices prepare these estimates by using a combination of survey indications, historic trends, and any available administrative data. Individual State estimates are reviewed by the Agricultural Statistics Board for reasonableness.

Revision Policy: Milk production, milk per cow, and number of milk cows are subject to revision the following month after initial publication for monthly States or the following quarter for the quarterly States. Normally, administrative data from Federal Market Orders, State Departments of Agriculture, or other sources are the main basis for revisions. However, administrative data for all States may not be available in time for these revisions. Estimates are again subject to revisions in February each year based on additional administrative data. In the event that additional changes are necessary, a third revision is possible in February the following year. Estimates are again reviewed after data from the five-year Census of Agriculture are available. No revisions are made after that date.

Reliability: Since all operations with dairy animals are not included in the sample, survey estimates are subject to sampling variability. Survey results are also subject to non-sampling errors such as omissions, duplications, and mistakes in reporting, recording, and processing the data. The effects of these errors cannot be measured directly. They are minimized through rigid quality controls in the data collection process and through a careful review of all reported data for consistency and reasonableness.

To assist users in evaluating the reliability of the estimates in this report, the "Root Mean Square Error" is shown for selected items in the table below. The "Root Mean Square Error" is a statistical measure based on past performance and is computed using the differences between first and final estimates. The "Root Mean Square Error" for the 24 State milk production estimates over the past 24 months is 0.3 percent. This means that chances are 2 out of 3 that the final estimate will not be above or below the current estimate of 18.1 billion pounds by more than 0.3 percent. Chances are 9 out of 10 that the difference will not exceed 0.5 percent.

Reliability of Monthly Milk Production Estimates

[Based on data for the past 24 months]

Item	Root mean square error	90 percent confidence level	Difference between first and latest estimate				
			Average	Smallest	Largest	Months	
						Below latest	Above latest
	(percent)	(percent)	(1,000)	(1,000)	(1,000)	(number)	(number)
Milk production	0.3	0.5	39	1	137	7	17
All Milk cows	0.1	0.1	6	0	13	4	16

Information Contacts

Listed below are the commodity specialists in the Livestock Branch of the National Agricultural Statistics Service to contact for additional information. E-mail inquiries may be sent to nass@usda.gov.

Travis Averill, Chief, Livestock Branch	(202) 692-0069
Scott Hollis, Head, Livestock Section	(202) 690-2424
Sherry Bertramsen – Livestock Slaughter	(202) 690-8632
Ryan Cowen – Cattle, Cattle on Feed	(202) 720-3040
Kim DaPra – Milk Production and Milk Cows	(512) 501-3266
Donnie Fike – Dairy Products	(202) 690-3347
Ralph Mondesir – Hogs and Pigs	(202) 720-3106
Suzanne Richards – Sheep and Goats	(202) 720-4448

Access to NASS Reports

For your convenience, you may access NASS reports and products the following ways:

- All reports are available electronically, at no cost, on the NASS web site: www.nass.usda.gov.
- Both national and state specific reports are available via a free e-mail subscription. To set-up this free subscription, visit www.nass.usda.gov and click on “National” or “State” in upper right corner above “search” box to create an account and select the reports you would like to receive.
- Cornell’s Mann Library has launched a new website housing NASS’s and other agency’s archived reports. The new website, <https://usda.library.cornell.edu>. All email subscriptions containing reports will be sent from the new website, <https://usda.library.cornell.edu>. To continue receiving the reports via e-mail, you will have to go to the new website, create a new account and re-subscribe to the reports. If you need instructions to set up an account or subscribe, they are located at: <https://usda.library.cornell.edu/help>. You should whitelist notifications@usda-esmis.library.cornell.edu in your email client to avoid the emails going into spam/junk folders.

For more information on NASS surveys and reports, call the NASS Agricultural Statistics Hotline at (800) 727-9540, 7:30 a.m. to 4:00 p.m. ET, or e-mail: nass@usda.gov.

The U.S. Department of Agriculture (USDA) prohibits discrimination against its customers, employees, and applicants for employment on the basis of race, color, national origin, age, disability, sex, gender identity, religion, reprisal, and where applicable, political beliefs, marital status, familial or parental status, sexual orientation, or all or part of an individual's income is derived from any public assistance program, or protected genetic information in employment or in any program or activity conducted or funded by the Department. (Not all prohibited bases will apply to all programs and/or employment activities.)

If you wish to file a Civil Rights program complaint of discrimination, complete the [USDA Program Discrimination Complaint Form](#) (PDF), found online at www.ascr.usda.gov/filing-program-discrimination-complaint-usda-customer, or at any USDA office, or call (866) 632-9992 to request the form. You may also write a letter containing all of the information requested in the form. Send your completed complaint form or letter to us by mail at U.S. Department of Agriculture, Director, Office of Adjudication, 1400 Independence Avenue, S.W., Washington, D.C. 20250-9410, by fax (202) 690-7442 or email at program.intake@usda.gov.



USDA Fall Data Users' Meeting

**Virtual Meeting
October 15 & 16, 2024
Starting at 12:00 pm ET**

USDA's National Agricultural Statistics Service (NASS) will hold a virtual meeting for users of U.S. domestic and international agriculture data. NASS is organizing the 2024 Fall Data Users' Meeting in cooperation with five other USDA agencies – Agricultural Marketing Service, Economic Research Service, Farm Service Agency, Foreign Agricultural Service, and World Agricultural Outlook Board – and the Census Bureau's Foreign Trade Division. Representatives will provide agency updates, answer questions, and listen to concerns from data users. Registration details will be coming soon.