



ISSN: 1949-1964

Released December 13, 2024, by the National Agricultural Statistics Service (NASS), Agricultural Statistics Board, United States Department of Agriculture (USDA).

Eggs in Incubators on December 1 Down 3 Percent from Last Year

Turkey eggs in incubators on December 1, 2024 in the United States totaled 24.7 million, down 3 percent from December 1, 2023. Eggs in incubators were down 1 percent from the November 1, 2024 total of 24.9 million eggs.

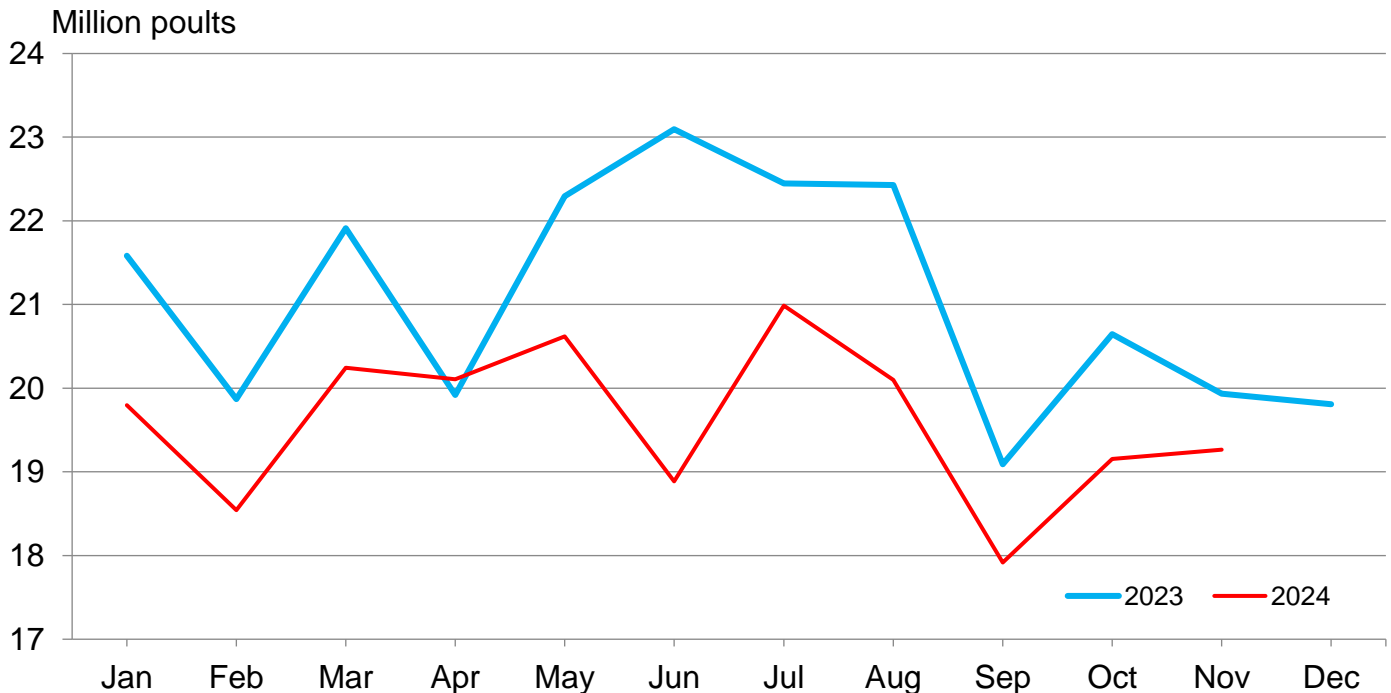
Poults Hatched During November Down 3 Percent from Last Year

Turkey poults hatched during November 2024 in the United States totaled 21.0 million, down 3 percent from November 2023. Poults hatched were down slightly from the October 2024 total of 21.0 million poults.

Net Poults Placed During November Down 3 Percent from Last Year

The 19.3 million net poults placed during November 2024 in the United States were down 3 percent from the number placed during the same month a year earlier. Net poult placements were up 1 percent from the October 2024 total of 19.2 million.

Net Poult Placements – United States



Eggs in Incubators and Poults Hatched by Month – United States: 2023-2025

[Blank data cells indicate estimation period has not yet begun]

Month	Eggs in incubators first of month		Percent of previous year	Poults hatched entire month		Percent of previous year
	2023-2024	2024-2025		2023-2024	2024-2025	
	(1,000 eggs)	(1,000 eggs)	(percent)	(1,000 poults)	(1,000 poults)	(percent)
September	26,636	24,993	94	21,571	20,230	94
October	27,010	24,947	92	22,665	21,021	93
November	25,537	24,862	97	21,668	21,017	97
December	25,346	24,663	97	21,671		
January	24,945			21,527		
February	25,422			20,274		
March	24,689			21,676		
April	26,341			21,366		
May	25,003			21,706		
June	22,806			19,739		
July	23,906			21,115		
August	24,860			20,691		

Net Poults Placements by Month – United States: 2023-2025

[Includes imports and excludes exports. Blank data cells indicate estimation period has not yet begun]

Month	Total all breeds		Percent of previous year	Cumulative total		Percent of previous year
	2023-2024	2024-2025		2023-2024	2024-2025	
	(1,000 poults)	(1,000 poults)	(percent)	(1,000 poults)	(1,000 poults)	(percent)
September	19,091	17,917	94	19,091	17,917	94
October	20,645	19,156	93	39,736	37,073	93
November	19,934	19,266	97	59,670	56,339	94
December	19,807			79,477		
January	19,795			99,272		
February	18,542			117,814		
March	20,246			138,060		
April	20,105			158,165		
May	20,619			178,784		
June	18,886			197,670		
July	20,987			218,657		
August	20,098			238,755		

Statistical Methodology

Survey Procedures: Data for turkey hatchery estimates are collected from all known turkey hatcheries. Individual NASS regional field offices maintain a list of all known turkey hatcheries and use known sources of hatcheries to update their lists. Approximately 40 hatcheries in 20 states are contacted each month. All known turkey hatcheries hatching 15,000 or more poults annually are mailed a questionnaire as close to the first of the month as possible. Adequate time is given to respond via mail, fax, or electronic data reporting. Those that do not respond are contacted by phone. Care is exercised to ensure that all hatcheries are accounted for in the estimate.

Estimating Procedures: Sound statistical methodology is employed to derive the estimates from reported data. All data are analyzed for unusual values. Data from each operation are compared to their own past operating profile and to trends from similar operations. Data for missing operations were estimated based on similar operations or historical data. NASS regional field offices prepare these estimates by using a combination of survey indications and historic trends. Individual State estimates are reviewed by the Agricultural Statistics Board for reasonableness. Individual hatchery data are summed to State, regional, and United States totals. Only United States level estimates are published due to the limited number of hatcheries involved. The Net Poult Placement data include imported poults and exclude exported poults.

Cumulative net poult placements beginning on September 1 and ending on August 31 are shown in the monthly *Turkey Hatchery* report. This time period corresponds with the placements of poults which will reach maturity and be available for slaughter during the calendar year.

Revision Policy: Revisions are generally the result of late or corrected data. Revisions to the previous month are published in the monthly *Turkey Hatchery* report, while annual revisions are published in the *Hatchery Production - Annual Summary* report in April.

Reliability: Turkey hatchery estimates are based on a census of all known operating hatcheries and therefore, have no sampling error. However, estimates are subject to errors such as omission, duplication, and mistakes in reporting, recording, and processing the data. While these errors cannot be measured directly, they are minimized through strict quality controls in the data collection process and through a careful review of all reported data for consistency and reasonableness.

To assist in evaluating the reliability of the estimates in this report, the “Root Mean Square Error” is shown for selected items in the following table. The “Root Mean Square Error” is a statistical measure based on past performance and is computed using the differences between first and final estimates. The “Root Mean Square Error” for turkey eggs in incubators on the first day of the month over the past 24 months is 2.3 percent. This means that chances are 2 out of 3 that the final estimate will not be above or below the current estimate of 24.7 million eggs by more than 2.3 percent. Chances are 9 out of 10 that the difference will not exceed 3.9 percent.

Reliability of December Turkey Hatchery Estimates

[Based on data for the past 24 months]

Item	Root mean square error	90 percent confidence level	Difference between first and latest estimate				
			Average	Smallest	Largest	Months	
						Below latest	Above latest
	(percent)	(percent)	(1,000)	(1,000)	(1,000)	(number)	(number)
Eggs in incubators	2.3	3.9	392	10	2,202	13	11
Poults hatched	1.1	1.9	157	6	833	14	10
Net poult placements	1.3	2.2	184	6	826	13	11

Information Contacts

Listed below are the commodity specialists in the Livestock Branch of the National Agricultural Statistics Service to contact for additional information. E-mail inquiries may be sent to nass@usda.gov

Travis Averill, Chief, Livestock Branch	(202) 692-0069
Ryan Cowen, Acting Head, Poultry and Specialty Commodities Section	(202) 720-3040
Holly Brenize – Poultry Slaughter.....	(202) 720-0585
Liana Cuffman – Catfish and Trout, Mink, Census of Aquaculture	(202) 720-8784
Fatema Haque – Turkey Hatchery, Turkeys Raised	(202) 720-3244
Derron Martin – Chicken Hatchery, Egg Products.....	(202) 690-3237
Seth Riggins – Honey, Honey Bee Colonies	(202) 690-4870
Shulonda Shaw – Cold Storage, Capacity of Refrigerated Warehouses	(202) 720-3240
Autumn Stone – Layers, Eggs	(202) 690-3676
Takiyah Walker – Broiler Hatchery.....	(202) 720-6147

Access to NASS Reports

For your convenience, you may access NASS reports and products the following ways:

- All reports are available electronically, at no cost, on the NASS web site: www.nass.usda.gov.
- Both national and state specific reports are available via a free e-mail subscription. To set-up this free subscription, visit www.nass.usda.gov and click on “National” or “State” in upper right corner above “search” box to create an account and select the reports you would like to receive.
- Cornell’s Mann Library has launched a new website housing NASS’s and other agency’s archived reports. The new website, <https://usda.library.cornell.edu>. All email subscriptions containing reports will be sent from the new website, <https://usda.library.cornell.edu>. To continue receiving the reports via e-mail, you will have to go to the new website, create a new account and re-subscribe to the reports. If you need instructions to set up an account or subscribe, they are located at: <https://usda.library.cornell.edu/help>. You should whitelist notifications@usda-esmis.library.cornell.edu in your email client to avoid the emails going into spam/junk folders.

For more information on NASS surveys and reports, call the NASS Agricultural Statistics Hotline at (800) 727-9540, 7:30 a.m. to 4:00 p.m. ET, or e-mail: nass@usda.gov.

The U.S. Department of Agriculture (USDA) prohibits discrimination against its customers, employees, and applicants for employment on the basis of race, color, national origin, age, disability, sex, gender identity, religion, reprisal, and where applicable, political beliefs, marital status, familial or parental status, sexual orientation, or all or part of an individual's income is derived from any public assistance program, or protected genetic information in employment or in any program or activity conducted or funded by the Department. (Not all prohibited bases will apply to all programs and/or employment activities.)

If you wish to file a Civil Rights program complaint of discrimination, complete the [USDA Program Discrimination Complaint Form](#) (PDF), found online at www.ascr.usda.gov/filing-program-discrimination-complaint-usda-customer, or at any USDA office, or call (866) 632-9992 to request the form. You may also write a letter containing all of the information requested in the form. Send your completed complaint form or letter to us by mail at U.S. Department of Agriculture, Director, Office of Adjudication, 1400 Independence Avenue, S.W., Washington, D.C. 20250-9410, by fax (202) 690-7442 or email at program.intake@usda.gov.