



---

# September Crop Production

## Agricultural Statistics Board Briefing

**Patrick Boyle, Chief  
Crops Branch**

September 12, 2024



# Data Sources



<b>Operator Reported Survey</b>	<b>Ag Yield</b>	<b>Sample Size = 6,879</b>	<b>August 30 - September 9</b>
<b>Field Survey</b>	<b>Objective Yield Corn, Soybeans</b>	<b>Sample Size = 3,090</b>	<b>August 24 - September 1</b>
<b>Remotely Sensed (Satellite)</b>	<b>Time Series 250 Meter MODIS Satellite Data</b>	<b>Focus Area Corn Belt</b>	<b>Imagery Through September 4</b>
<b>FSA Certified Acres</b>	<b>Farm Service Agency policy requires that producers participating in several programs submit an annual report regarding all cropland use on their farms.</b>		

**United States Department of Agriculture**  
National Agricultural Statistics Service

September 12, 2024

## Ag Yield

- Usable Report Rate = 76.9%; compared to 75.1% LY

## Objective Yield (Corn, Soybeans)

- Cotton OY Discontinued
- All samples in all states completed this month
  - Corn=1,560; Soybeans=1,530

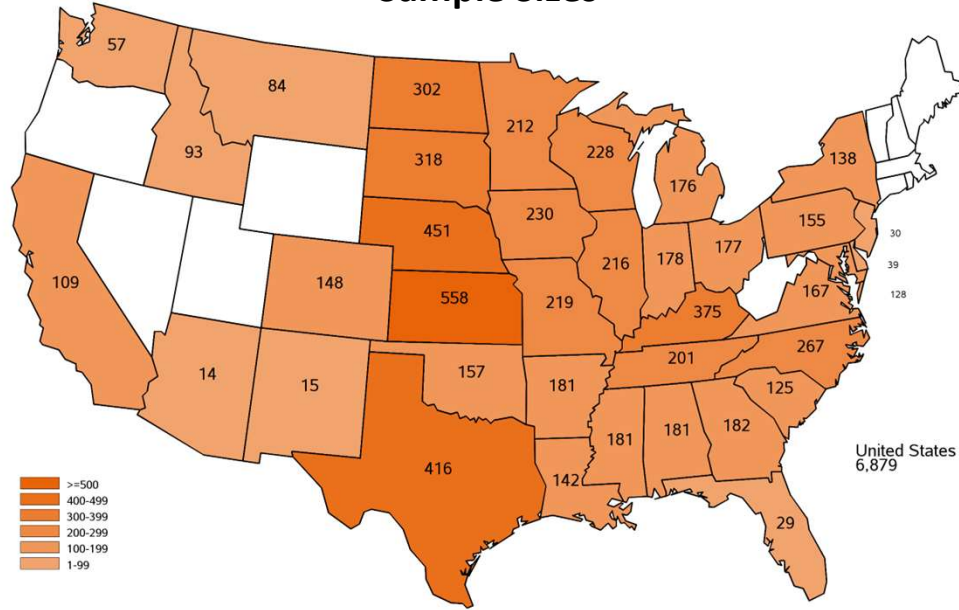
## Remotely Sensed (Satellite)

- NVDI



# September 2024 Ag Yield Survey

## Sample Sizes



United States Department of Agriculture  
National Agricultural Statistics Service

September 12, 2024

### AY Samples by State



# Special Note



Each September, NASS has the opportunity to revise planted and harvested acreage estimates for chickpeas, corn, cotton, dry edible peas, lentils, peanuts, rice, sorghum, soybeans, and sugarbeets. Revisions are based on all available data, including the latest certified acreage data from the Farm Service Agency (FSA). All States in the estimating program for these crops were subject to review and updating.

**United States Department of Agriculture**  
National Agricultural Statistics Service

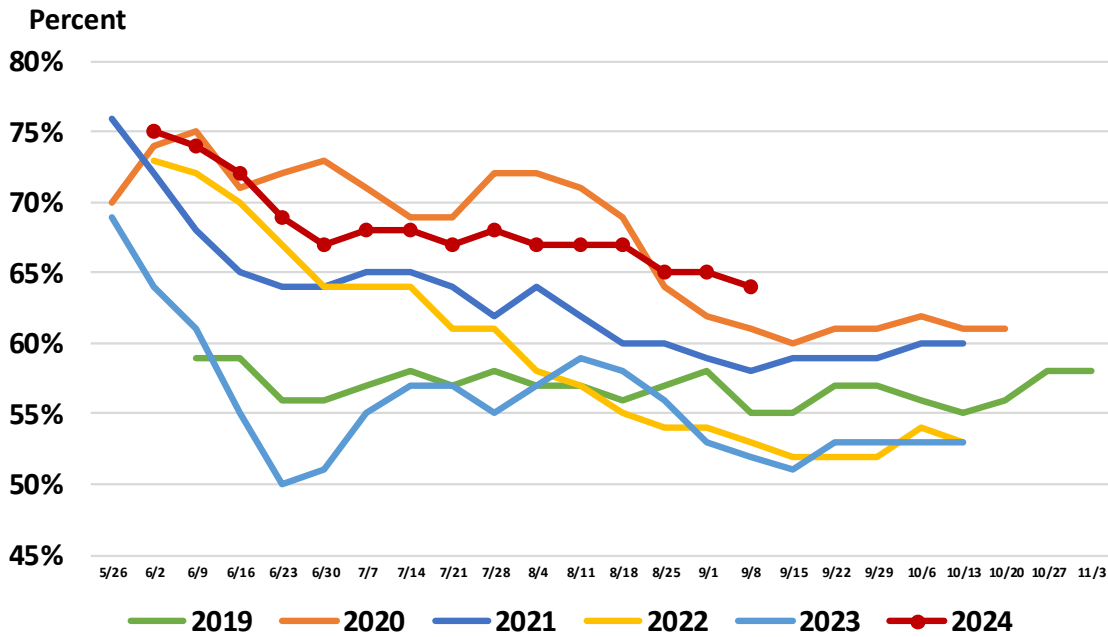
September 12, 2024

**Special Note**



# United States Corn Condition

## Percent Rated Good to Excellent



United States Department of Agriculture  
National Agricultural Statistics Service

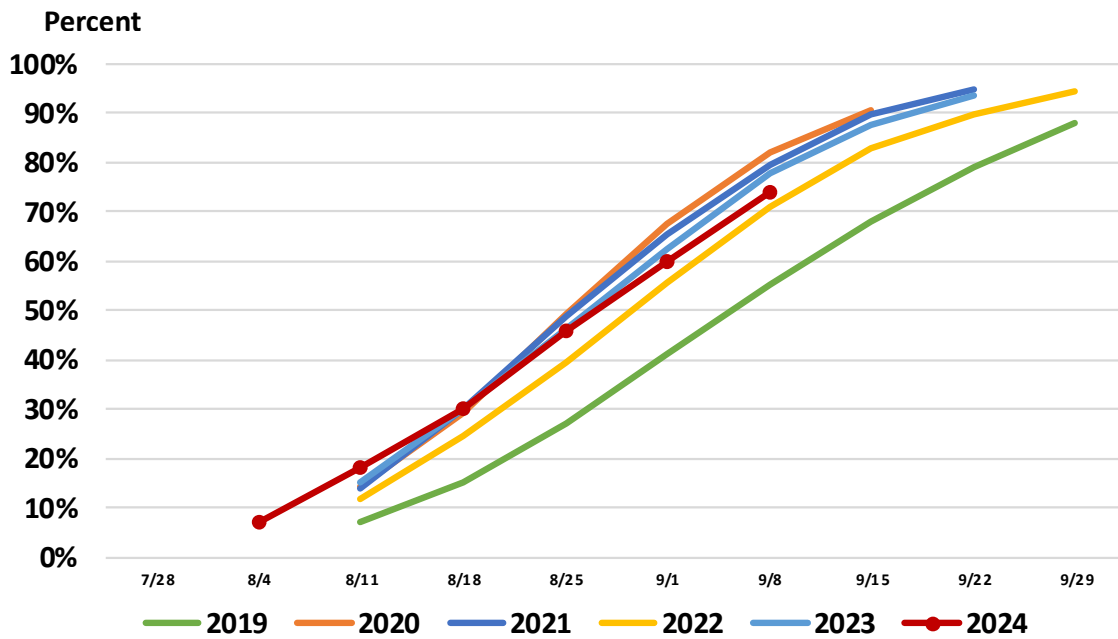
September 12, 2024

### Corn Condition

- Aug 4: 65% G to E; 56% PY
- Sep 1: 65% G to E; 53% PY



# United States Corn Progress Percent Dented



United States Department of Agriculture  
National Agricultural Statistics Service

September 12, 2024

## Corn Progress - Dented

- Sep 1: 60%; 62% LY; 58% avg



# September 2024 Corn Acreage, Yield, and Production

	Planted (1,000 Acres)	Harvested (1,000 Acres)	Yield (Bushels/Acre)	Production (1,000 Bushels)
<b>United States</b>	<b>90,748</b>	<b>82,710</b>	<b>183.6</b>	<b>15,185,510</b>
% Change from Previous Estimate	NC	NC	↑ 0.3	↑ 0.3
% Change from Previous Season	↓ 4.1	↓ 4.4	↑ 3.6	↓ 1.0

	Top 5 States - By Production							
	Planted (1,000 Acres)		Harvested (1,000 Acres)		Yield (Bushels/Acre)		Production (1,000 Bushels)	
		% Δ PY		% Δ PY		% Δ PY		% Δ PY
Iowa	12,900	↓ 1.5	12,350	↓ 1.6	212	↑ 5.5	2,618,200	↑ 3.8
Illinois	10,800	↓ 3.6	10,650	↓ 3.6	222	↑ 7.8	2,364,300	↑ 3.9
Nebraska	10,100	↑ 1.5	9,700	↑ 2.1	195	↑ 7.1	1,891,500	↑ 9.4
Minnesota	8,200	↓ 4.7	7,650	↓ 6.5	183	↓ 1.1	1,399,950	↓ 7.5
Indiana	5,200	↓ 4.6	5,060	↓ 4.7	210	↑ 3.4	1,062,600	↓ 1.4

United States Department of Agriculture  
National Agricultural Statistics Service

September 12, 2024

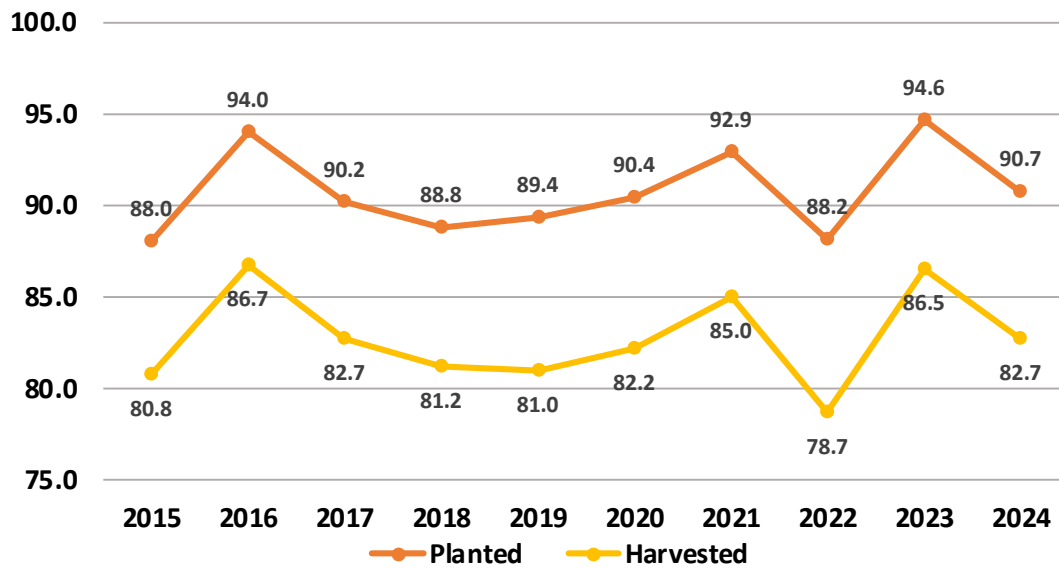
## Corn

- Planted acres down 3.89 million acres from PY
- Planted acres unchanged from PE
- Harvested acres down 3.8 million acres from PY
- Harvested acres unchanged from PE
- Yield up 6.3 bushels from PY
- Yield up 0.5 bushel from PE
- Production down 156 million bushels from PY
- Production up 38.9 million bushels from PE



# Corn Acres United States

Million Acres



United States Department of Agriculture  
National Agricultural Statistics Service

September 12, 2024

## Corn Acres

- Planted acres in 2024 decreased 4 percent or 3.89 million acres from last year.
- Harvested acres are forecasted down 4 percent or 3.80 million acres from last year.

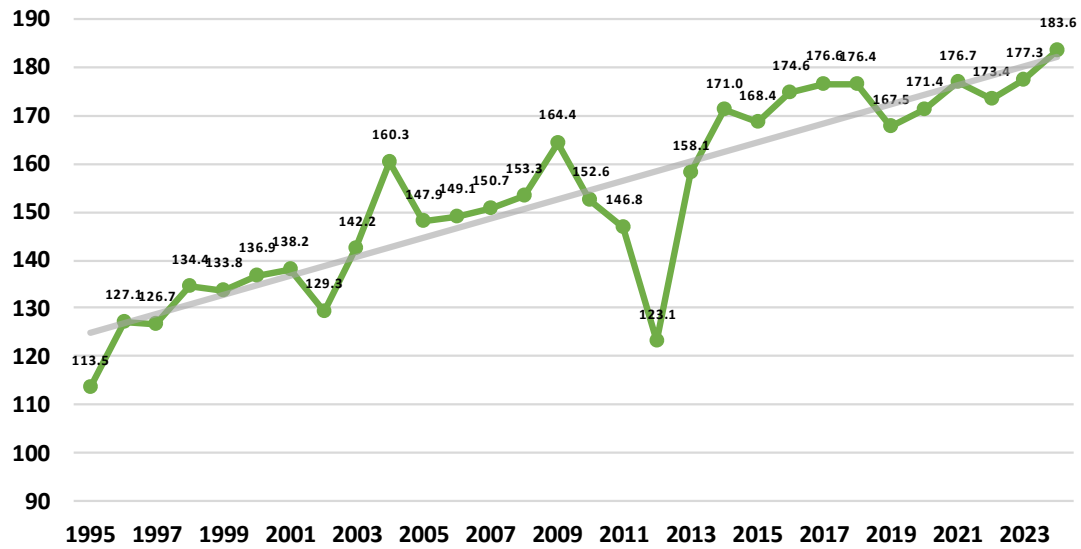




# Corn Yield United States



Bushels per Acre



United States Department of Agriculture  
National Agricultural Statistics Service

September 12, 2024

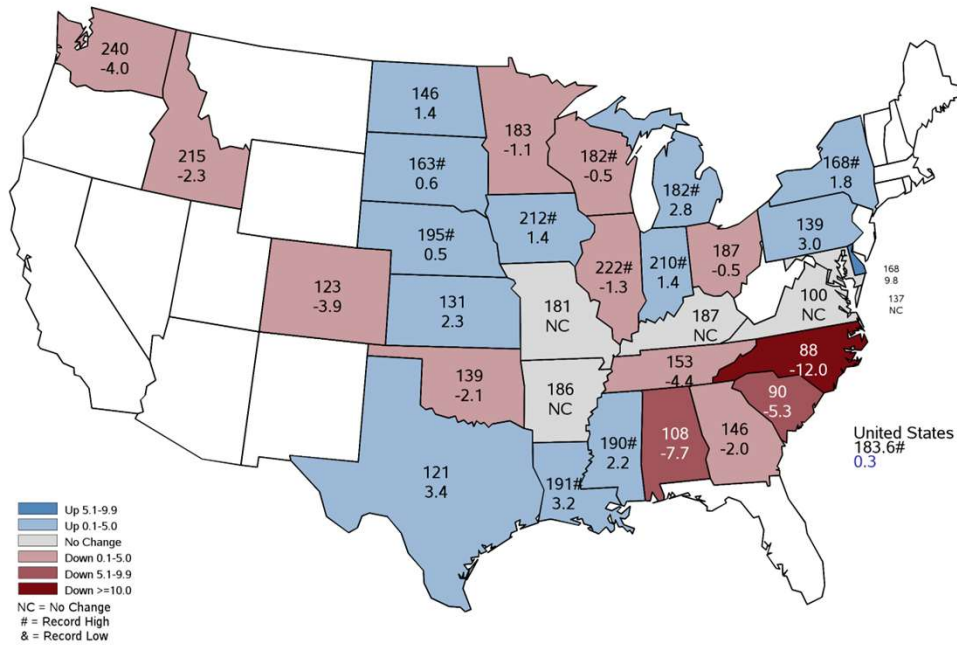
## Corn Yield

- Record high US yield forecasted in 2024, up 6.3 bu from previous record in 2023.



# September 2024 Corn Yield

## Bushels and Percent Change from Previous Month



United States Department of Agriculture  
National Agricultural Statistics Service

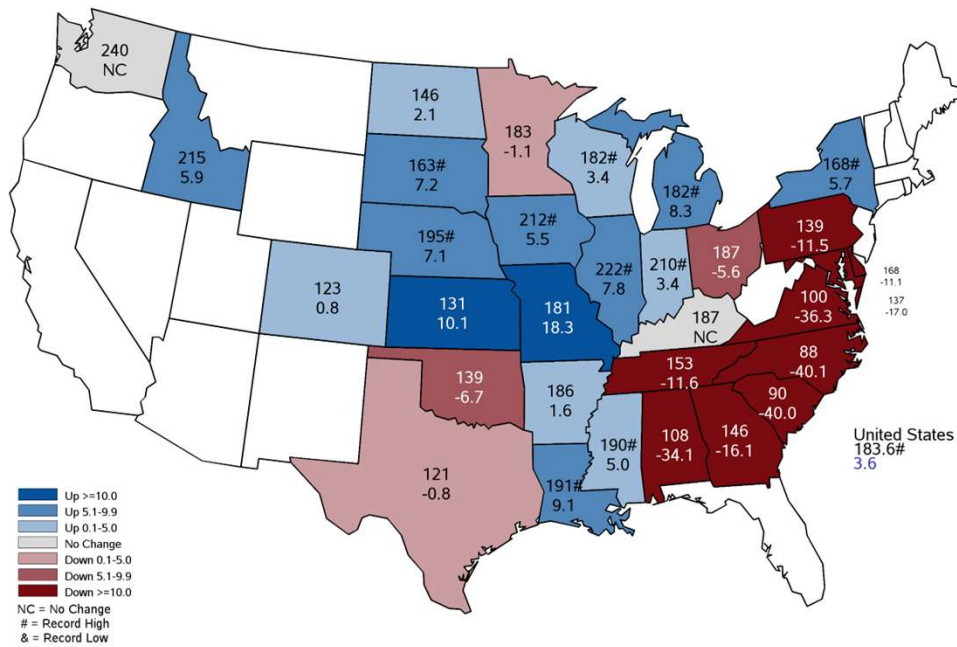
September 12, 2024

### Corn Yield

- Record high yields in Illinois, Indiana, Iowa, Louisiana, Michigan, Mississippi, Nebraska, New York, South Dakota, Wisconsin.

# September 2024 Corn Yield

## Bushels and Percent Change from Previous Year



United States Department of Agriculture  
National Agricultural Statistics Service

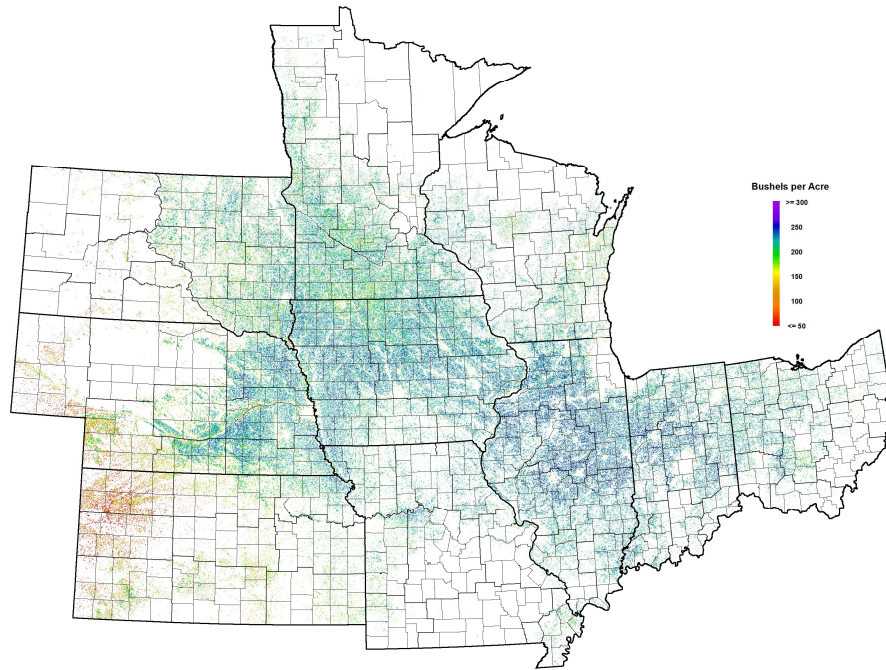
September 12, 2024

### Corn Yield

- Record high yields in Illinois, Indiana, Iowa, Louisiana, Michigan, Mississippi, Nebraska, New York, South Dakota, Wisconsin.



# September 2024 Corn NASA Terra MODIS Modeled Yield



United States Department of Agriculture  
National Agricultural Statistics Service

September 12, 2024

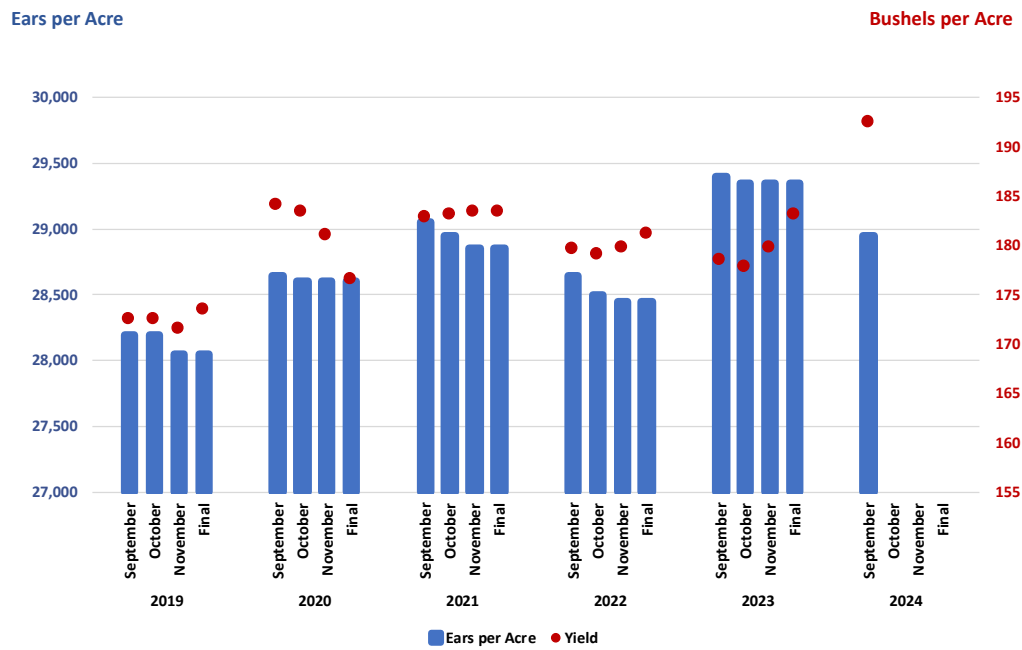
## Corn Remote Sensing

- Based on Remote Sensing Modeling
- NDVI = Normalized Difference Vegetation Index



# September 2024 Corn Objective Yield

## Ears per Acre and Yield for 10 State Region



United States Department of Agriculture  
National Agricultural Statistics Service

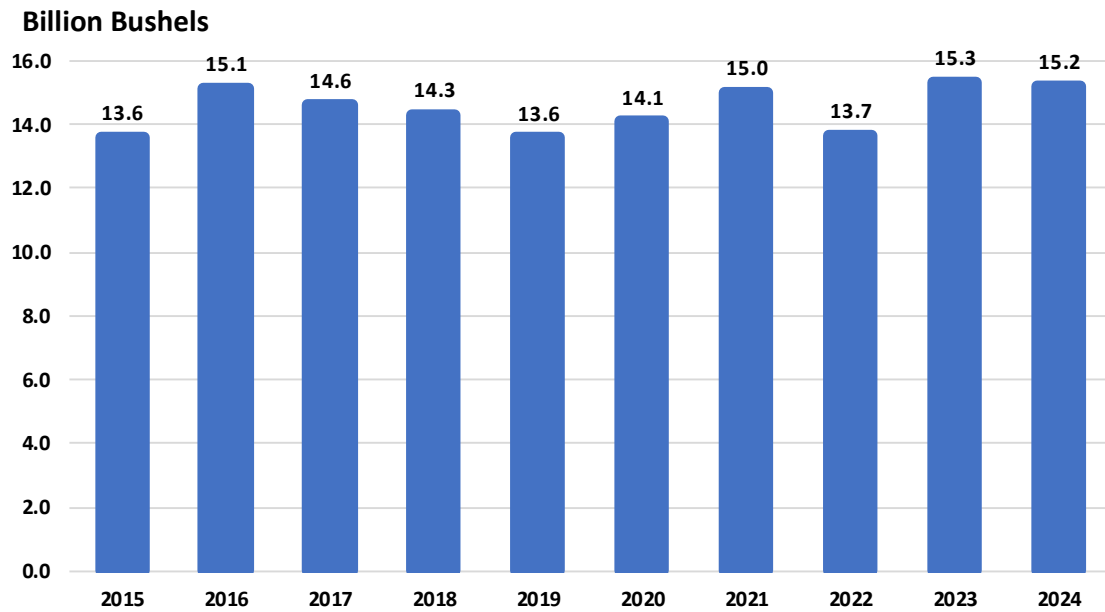
September 12, 2024

### Corn Objective Yield

- Ears/Acre for 10-State Region = 28,950
- Yield for 10-State Region = 192.5



# Corn Production United States



United States Department of Agriculture  
National Agricultural Statistics Service

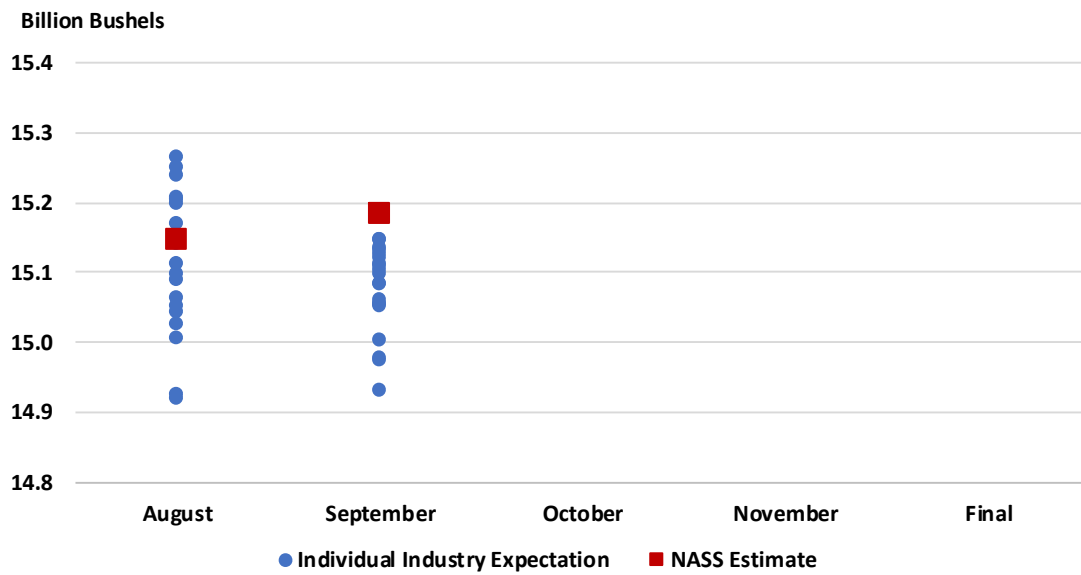
September 12, 2024

## Corn Production



# 2024 U.S. Corn Production

## Industry Expectations vs NASS



United States Department of Agriculture  
National Agricultural Statistics Service

September 12, 2024

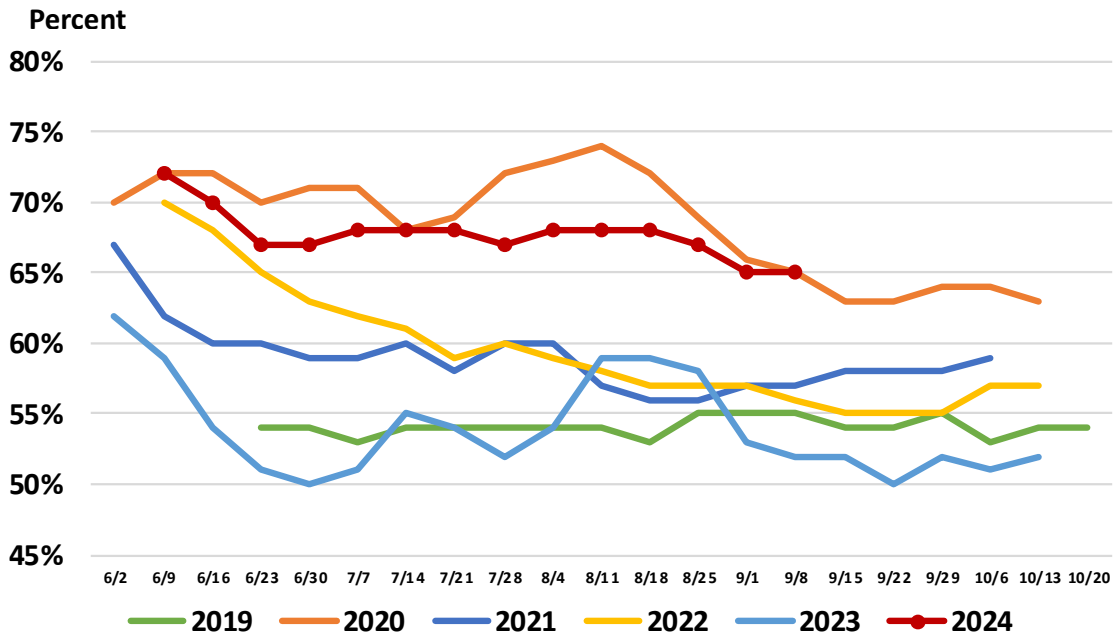
### Corn Production

- August: 15.1 bil bu
- September: 15.2 bil bu
- October:
- November:
- Final:



# United States Soybean Condition

## Percent Rated Good to Excellent



United States Department of Agriculture  
National Agricultural Statistics Service

September 12, 2024

### Soybean Condition

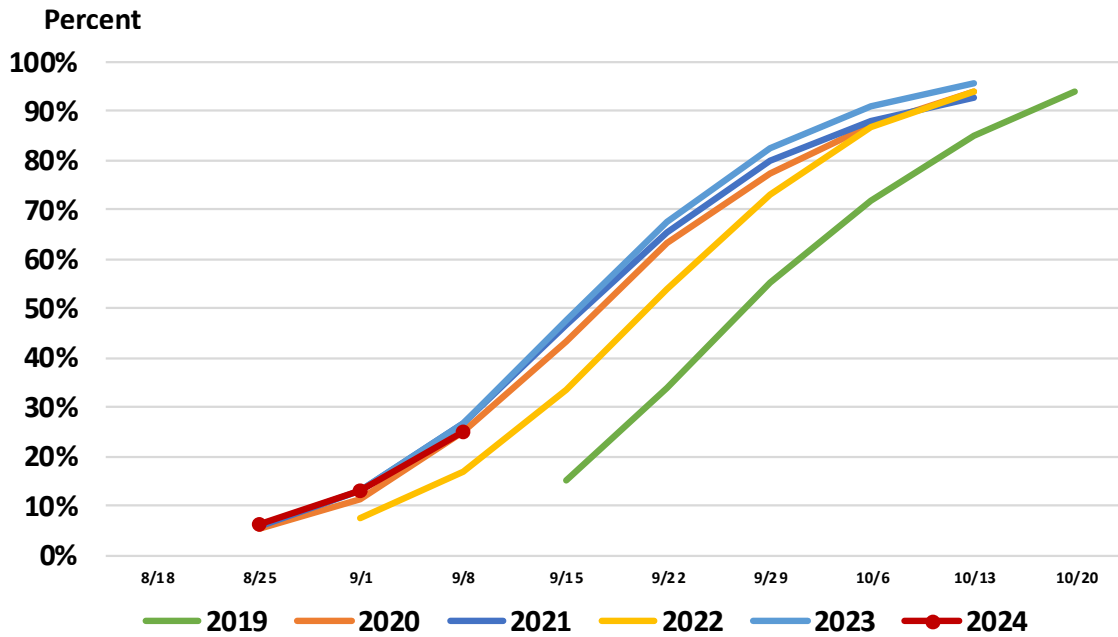
- Aug 4: 67% G to E; 68% LY
- Sep 1: 65% G to E; 53% LY





# United States Soybean Progress

## Percent Dropping Leaves



United States Department of Agriculture  
National Agricultural Statistics Service

September 12, 2024

### Soybean Progress

- Sep 1: 13%; 13% LY; 10% avg



# September 2024 Soybeans

## Acres, Yield, and Production

	Planted (1,000 Acres)	Harvested (1,000 Acres)	Yield (Bushels/Acre)	Production (1,000 Bushels)
<b>United States</b>	<b>87,100</b>	<b>86,271</b>	<b>53.2</b>	<b>4,585,889</b>
% Change from Previous Estimate	NC	NC	NC	↓ 0.1
% Change from Previous Season	↑ 4.2	↑ 4.8	↑ 5.1	↑ 10.1

	Top 5 States - By Production							
	Planted (1,000 Acres)		Harvested (1,000 Acres)		Yield (Bushels/Acre)		Production (1,000 Bushels)	
		% Δ PY		% Δ PY		% Δ PY		% Δ PY
Illinois	10,800	↑ 4.3	10,750	↑ 4.4	65.0	↑ 3.2	698,750	↑ 7.7
Iowa	10,050	↑ 1.0	9,970	↑ 0.9	63.0	↑ 8.6	628,110	↑ 9.6
Indiana	5,800	↑ 5.5	5,780	↑ 5.5	63.0	↑ 3.3	364,140	↑ 8.9
Minnesota	7,400	↑ 0.7	7,330	↑ 0.7	49.0	↑ 2.1	359,170	↑ 2.8
Nebraska	5,300	↑ 1.0	5,250	↑ 1.4	59.0	↑ 14.6	309,750	↑ 16.1

United States Department of Agriculture  
National Agricultural Statistics Service

September 12, 2024

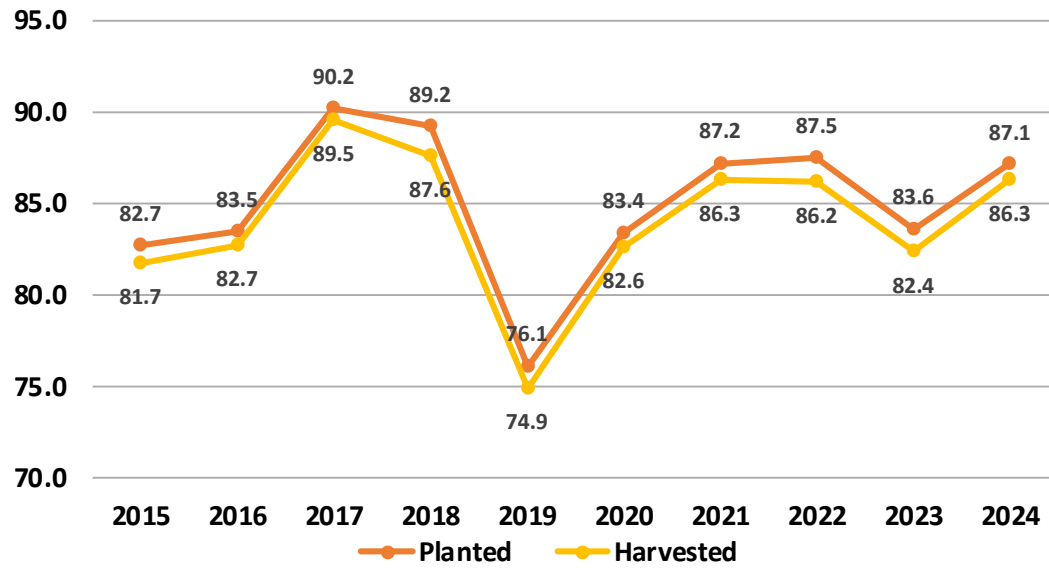
### Soybeans

- Planted acres up 3.5 million acres from PY
- Planted acres unchanged from PE
- Harvested acres up 3.92 million acres from PY
- Harvested acres unchanged from PE
- Yield up 2.6 bushels from PY
- Yield unchanged from PE
- Production up 421 million bushels from PY
- Production down 3.3 million bushels from PE
- US level yield is calculated as the sum of the States' production divided by the sum of the States' harvested acreage rounded to the nearest tenth. Since several States had changes to their yields from the previous estimate, the total production changed. However, this was not enough to change the US yield by 0.1 bushels.
- The current yield estimate rounded to the nearest hundredth is 53.16 compared to the previous 53.20 last month
- Record high yield and production



# Soybean Acres United States

Million Acres



United States Department of Agriculture  
National Agricultural Statistics Service

September 12, 2024

## Soybean Acres

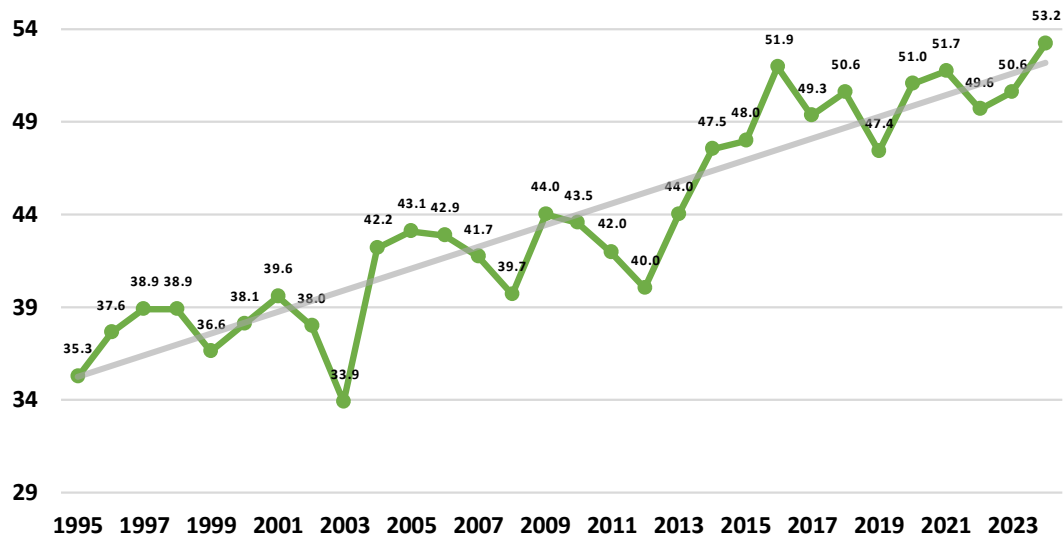
- Acreage unchanged from last month
- Record high planted and harvested in IL, KY, NY



# Soybean Yield United States



Bushels per Acre



United States Department of Agriculture  
National Agricultural Statistics Service

September 12, 2024

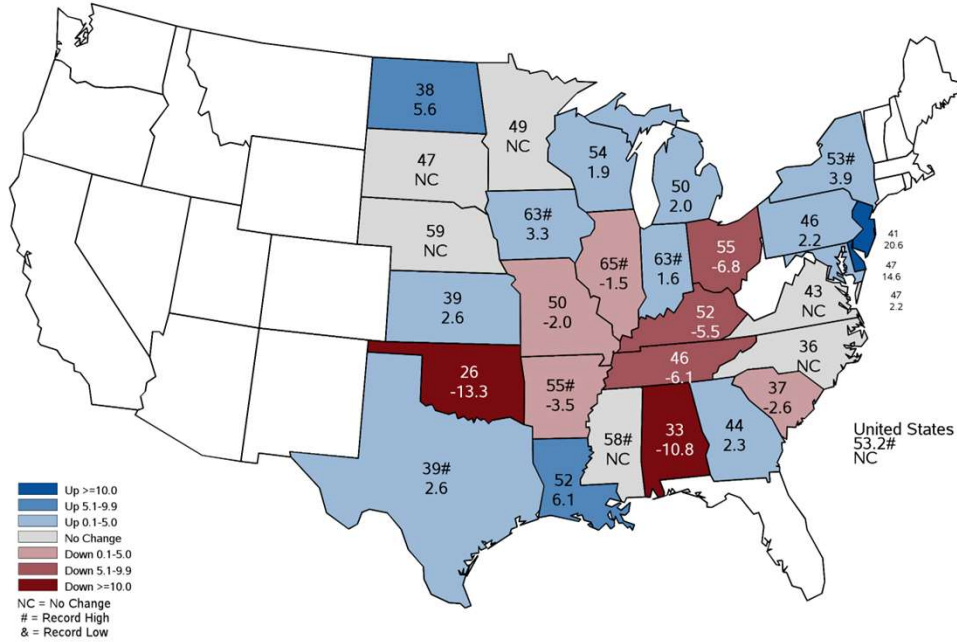
## Soybean Yield

- Record high US yield



# September 2024 Soybean Yield

## Bushels and Percent Change from Previous Month



United States Department of Agriculture  
National Agricultural Statistics Service

September 12, 2024

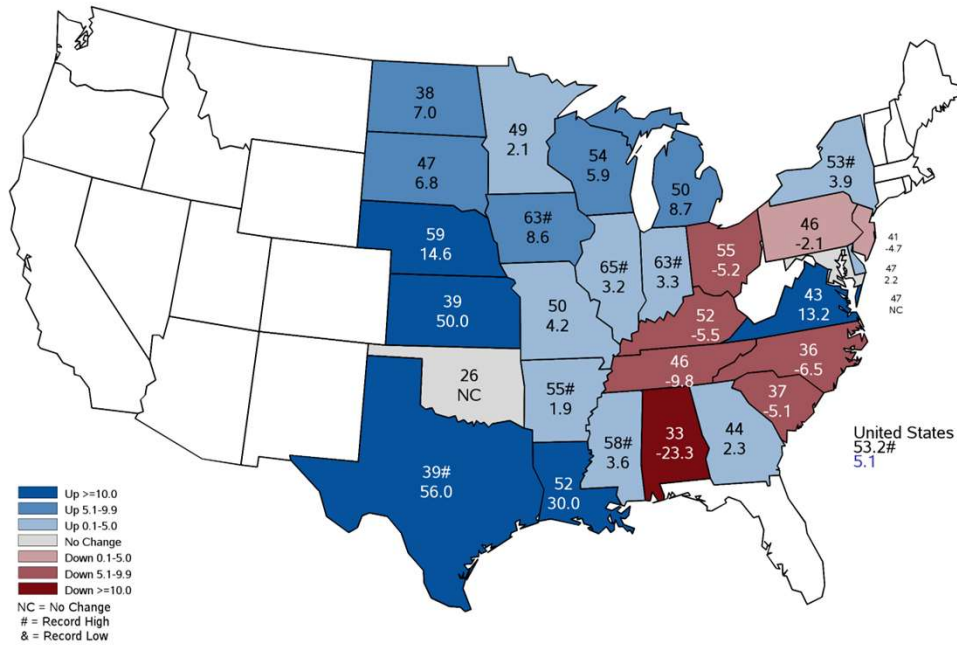
### Soybean Yield

- Record high yields in AR, IL, IN, IA, MS, NY, TX, US
- Same US yield as last month, but different mix of States



# September 2024 Soybean Yield

## Bushels and Percent Change from Previous Year



United States Department of Agriculture  
National Agricultural Statistics Service

September 12, 2024

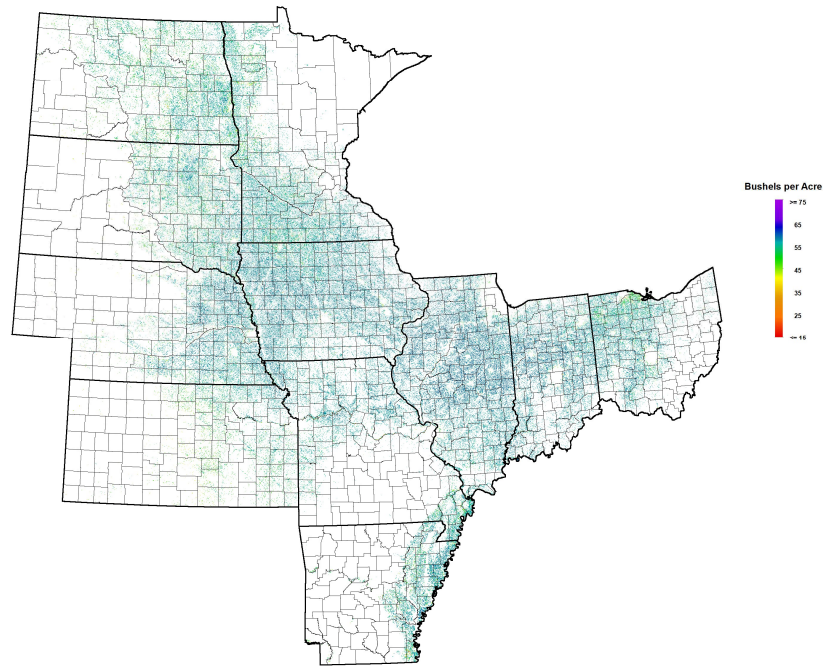
### Soybean Yield

- Record high yields in AR, IL, IN, IA, MS, NY, TX, US
- Drought in AL contributed to low yields compared to surrounding states



# September 2024 Soybeans

## NASA Terra MODIS Modeled Yield



United States Department of Agriculture  
National Agricultural Statistics Service

September 12, 2024

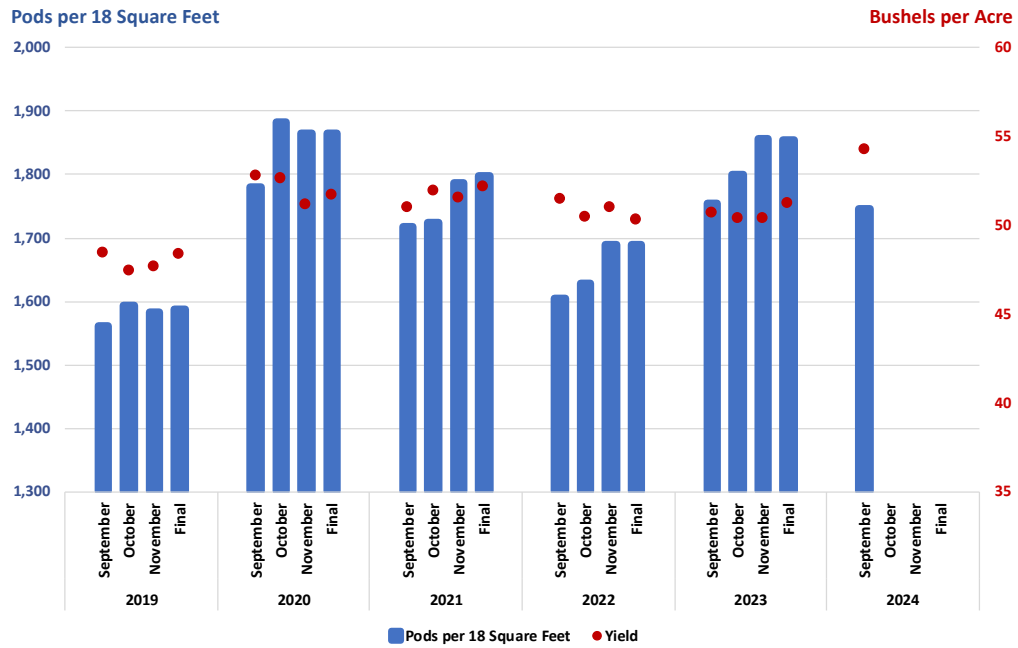
### Soybean Remote Sensing

- Based on Remote Sensing Modeling
- NDVI = Normalized Difference Vegetation Index



# September 2024 Soybean Objective Yield

## Pods per 18 Square Feet and Yield for 11 State Region



United States Department of Agriculture  
National Agricultural Statistics Service

September 12, 2024

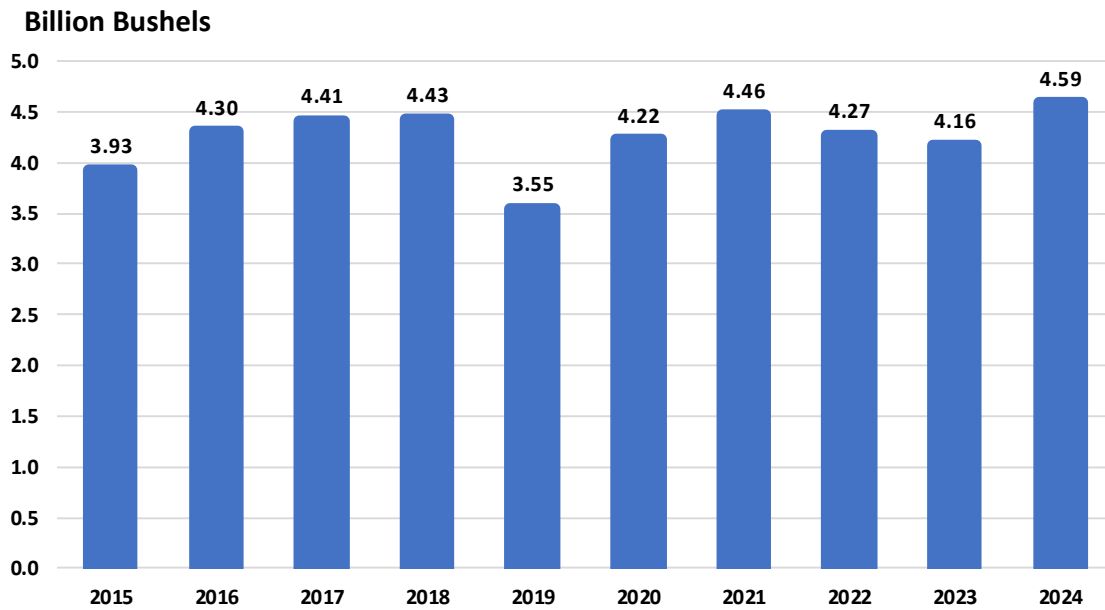
### Soybean Objective Yield

- Pods/18 Square Feet for 11-State Region = 1,746
- Yield for 11-State Region = 54.3





# Soybean Production United States



United States Department of Agriculture  
National Agricultural Statistics Service

September 12, 2024

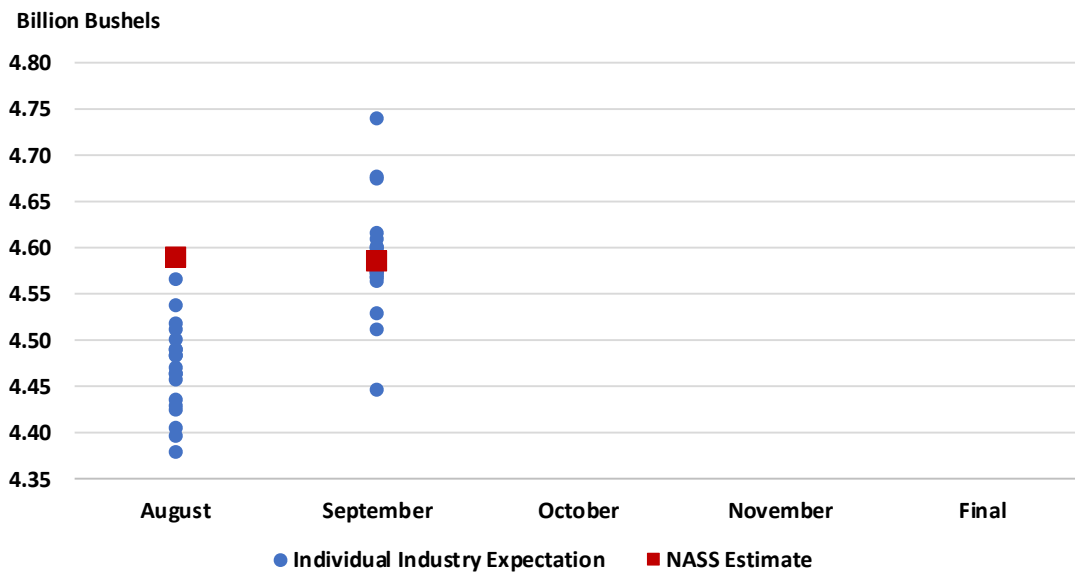
## Soybean Production

- Record high production in IL, IN, KY, MS, ND, NY, US



# 2024 U.S. Soybean Production

## Industry Expectations vs NASS

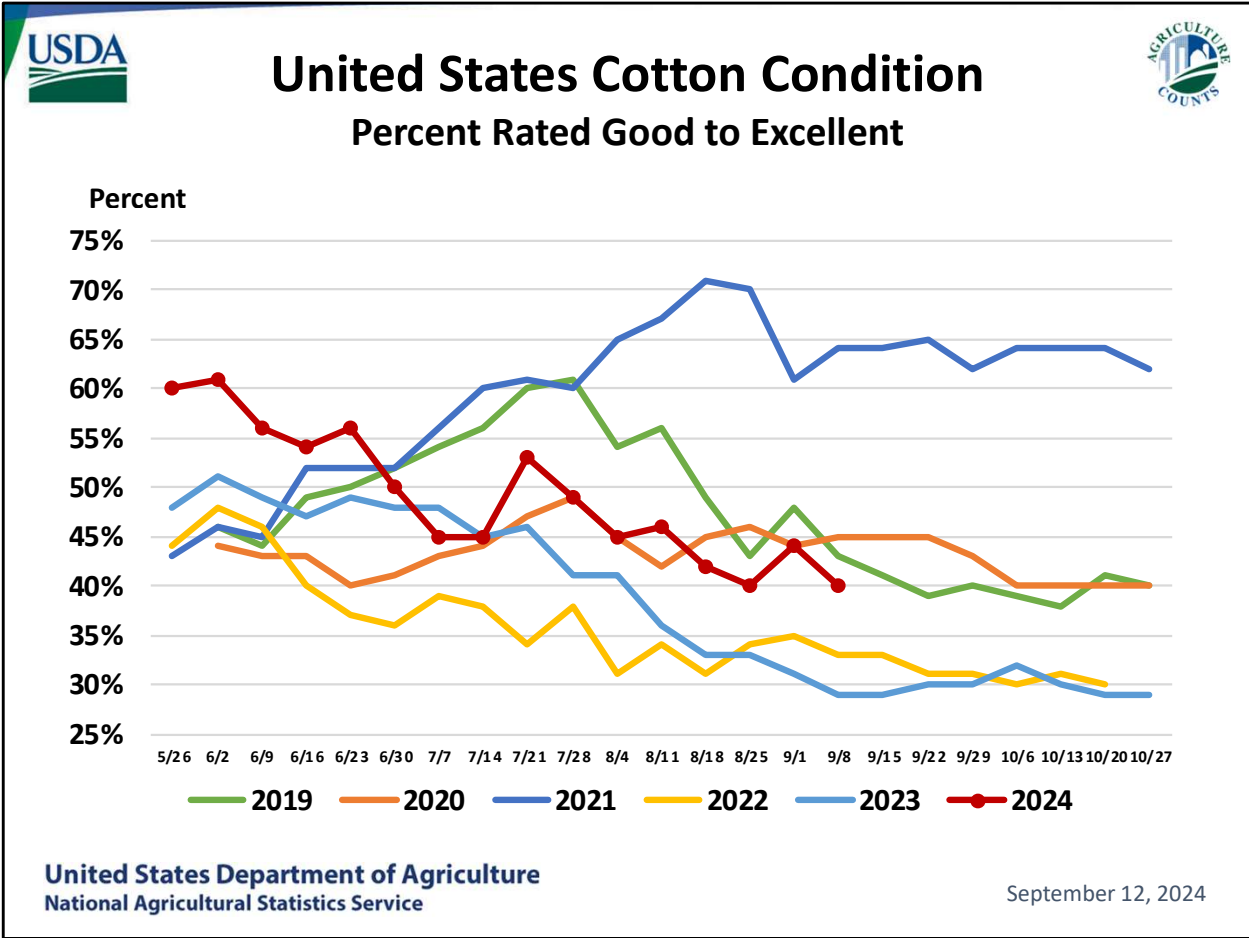


United States Department of Agriculture  
National Agricultural Statistics Service

September 12, 2024

### Soybean Production

- August: 4.59 bil bu
- September: 4.59 bil bu
- October:
- November:
- Final:



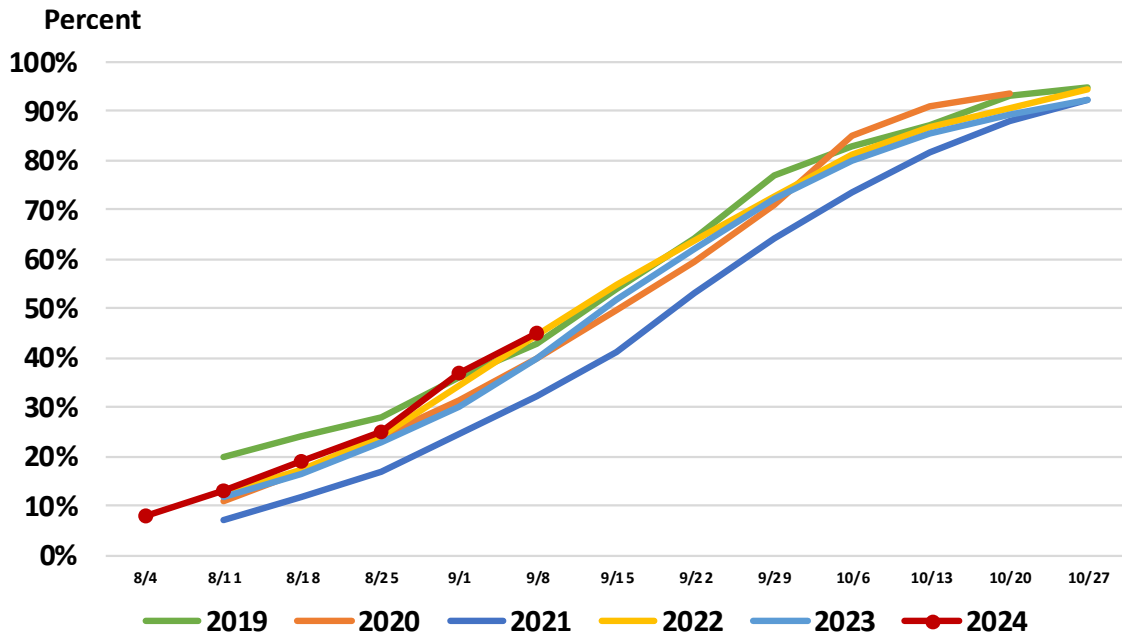
**Cotton Condition**

- Jul 28: 40% G to E; 33% LY
- Sep 1: 44% G to E; 31% LY
- TX- 36%, GA – 56% good to excellent



# United States Cotton Progress

## Percent Bolls Opening



United States Department of Agriculture  
National Agricultural Statistics Service

September 12, 2024

### Cotton Progress

- Sep 1: 37% bolls opening; 31% avg
- TX- 37%, 5% ahead of PY, GA- 28%, 6 % ahead of PY bolls opening



# September 2024 Cotton Acreage, Yield, and Production

	Planted (1,000 Acres)	Harvested (1,000 Acres)	Yield (Pounds/Acre)	Production (1,000 Bales)
<b>United States</b>	<b>11,174</b>	<b>8,635</b>	<b>807</b>	<b>14,512</b>
% Change from Previous Estimate	↑ <0.1	↑ <0.1	↓ 3.9	↓ 3.9
% Change from Previous Season	↑ 9.2	↑ 34.1	↓ 10.2	↑ 20.3

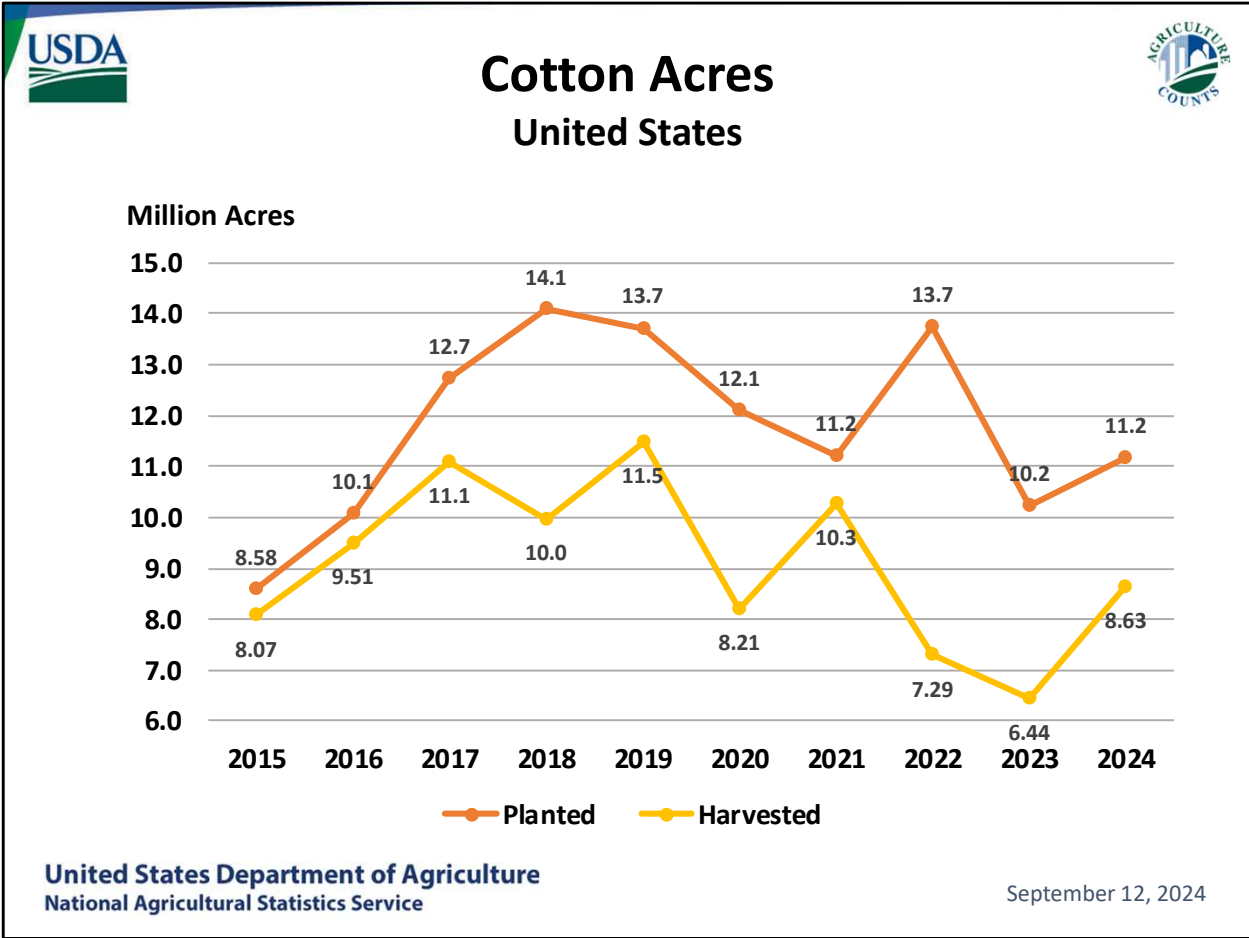
	Top 5 States - By Production							
	Planted (1,000 Acres)		Harvested (1,000 Acres)		Yield (Pounds/Acre)		Production (1,000 Bales)	
		% Δ PY		% Δ PY		% Δ PY		% Δ PY
Texas	5,983	↑ 7.2	3,679	↑ 73.3	542.0	↓ 12.3	4,156	↑ 52.1
Georgia	1,100	↓ 0.9	1,090	↓ 0.9	903.0	↓ 4.8	2,050	↓ 5.7
Arkansas	650	↑ 27.5	640	↑ 26.7	1,238.0	↓ 4.4	1,650	↑ 21.1
Mississippi	520	↑ 30.0	515	↑ 30.4	1,118.0	↑ 3.2	1,200	↑ 34.7
Missouri	400	↑ 19.4	380	↑ 15.2	1,238.0	↓ 9.0	980	↑ 4.7

United States Department of Agriculture  
National Agricultural Statistics Service

September 12, 2024

## All Cotton

- Planted acres up 944 thousand acres from PY
- Planted acres up 1 thousand acres from PE
- Harvested acres up 2.195 million acres from PY
- Harvested acres up 1 thousand acres from PE
- Yield down 92 pounds from PY
- Yield down 33 pounds from PE
- Production up 2.446 million bales from PY
- Production down 596 thousand bales from PE



**Cotton Acres**

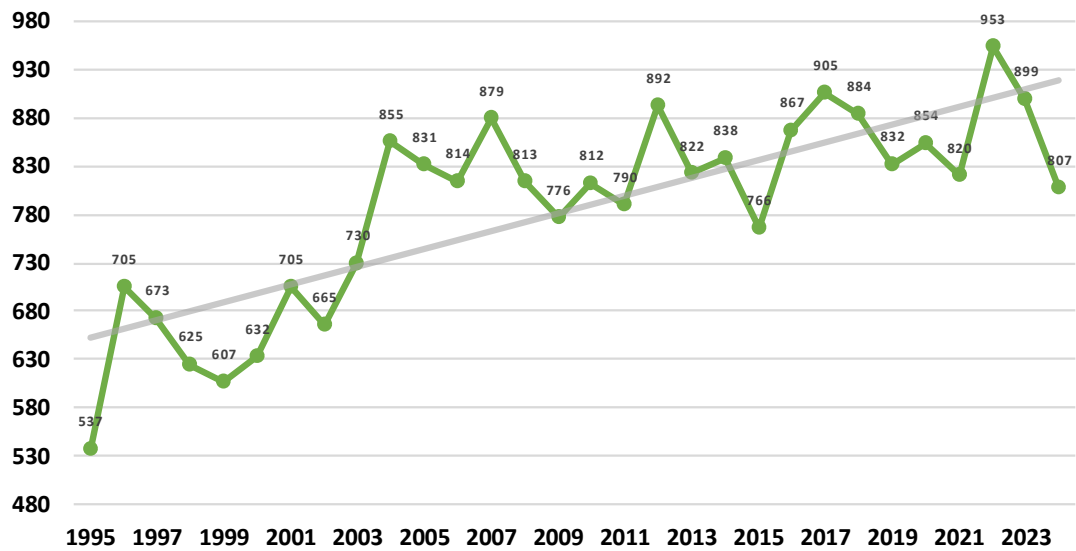
- No records at this time



# Cotton Yield United States



Pounds per Acre



United States Department of Agriculture  
National Agricultural Statistics Service

September 12, 2024

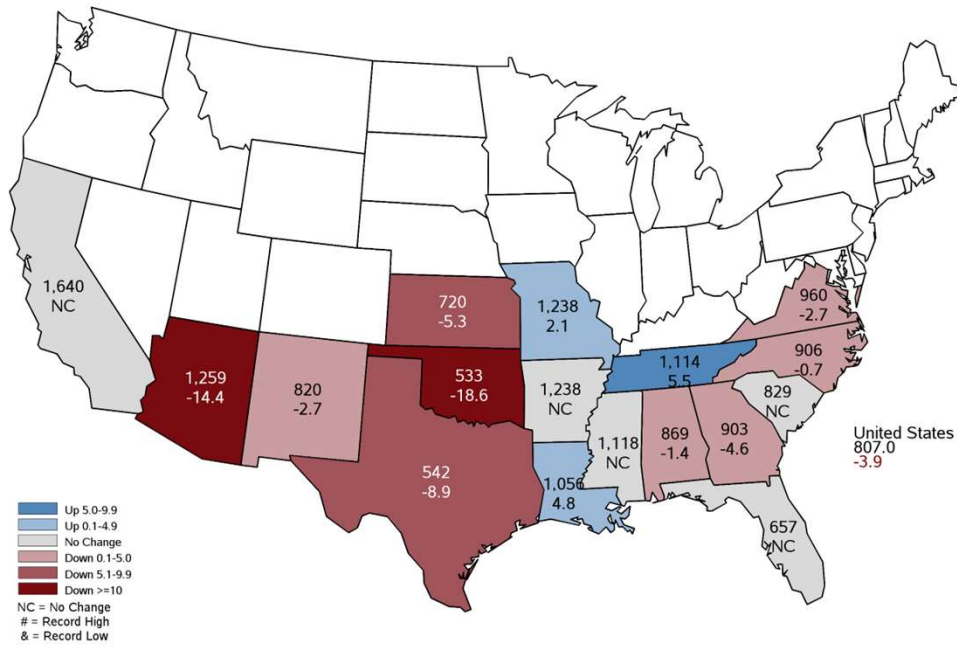
## Cotton Yield

- Lowest yield since 2015



# September 2024 Cotton Yield

## Pounds and Percent Change from Previous Month



United States Department of Agriculture  
National Agricultural Statistics Service

September 12, 2024

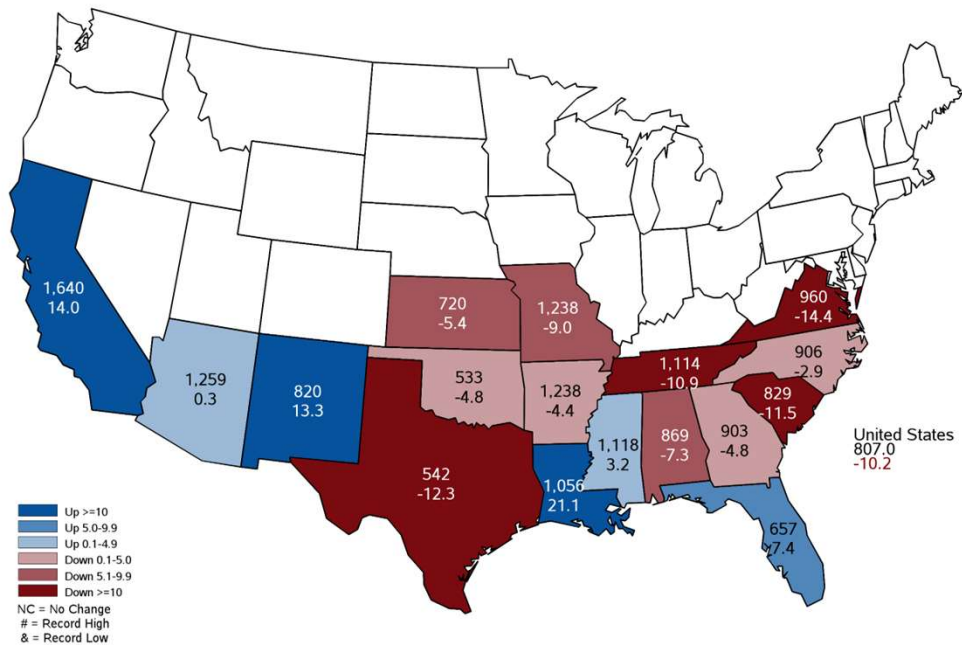
### Cotton Yield

- Largest decrease in yields were in the Arizona, Oklahoma, and Texas





## September 2024 Cotton Yield Pounds and Percent Change from Previous Year



United States Department of Agriculture  
National Agricultural Statistics Service

September 12, 2024

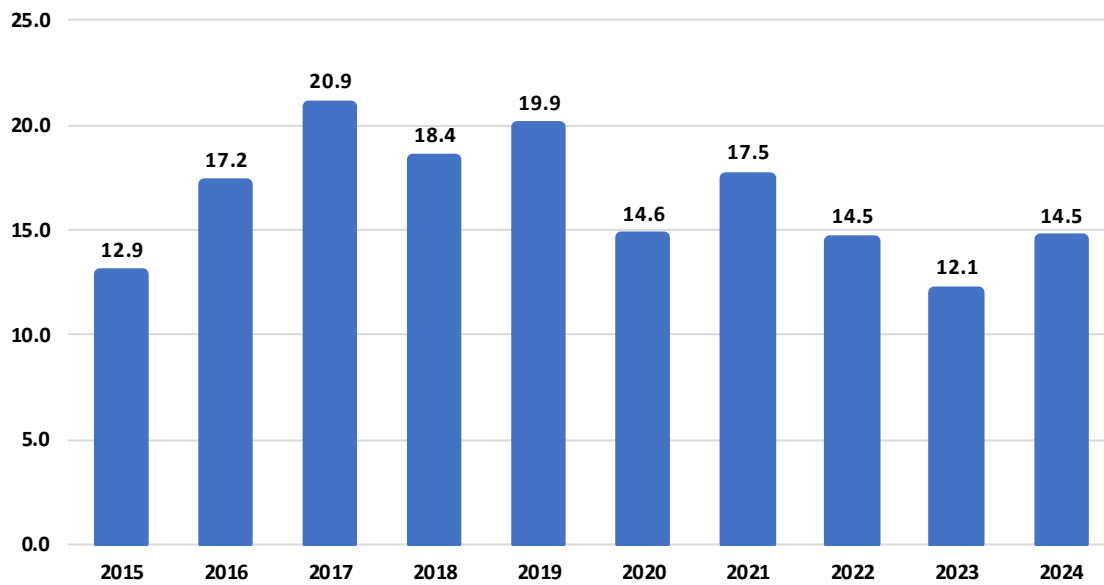
### Cotton Yield

- 11 states are estimating lower yields from last year, largest decreases are in the Eastern Mountain Region
- 6 states are forecasting higher yields from LY, largest increases are in California and Louisiana



# Cotton Production United States

Million Bales



United States Department of Agriculture  
National Agricultural Statistics Service

September 12, 2024

## Cotton Production

- Highest production since 2021



# September 2024 Field Crops

## Acres, Yield, and Production

	Planted (1,000 Acres)	Harvested (1,000 Acres)	Yield (Units per Acre)	Unit	Production (1,000 Units)	Unit
<b>Chickpeas</b>	<b>504</b>	<b>497</b>	<b>1,234</b>	<b>Lb</b>	<b>6,132</b>	<b>Cwt</b>
% Change from Previous Estimate	↑ 0.4	↑ 2.3	N/A		N/A	
% Change from Previous Season	↑ 35.3	↑ 38.3	↓ 6.2		↑ 29.9	
<b>Dry Edible Peas</b>	<b>988</b>	<b>947</b>	<b>2,036</b>	<b>Lb</b>	<b>19,278</b>	<b>Cwt</b>
% Change from Previous Estimate	↓ 4.4	↓ 4.1	N/A		N/A	
% Change from Previous Season	↑ 2.3	↑ 0.6	↑ 5.9		↑ 6.6	
<b>Lentils</b>	<b>936</b>	<b>900</b>	<b>1,060</b>	<b>Lb</b>	<b>9,538</b>	<b>Cwt</b>
% Change from Previous Estimate	↑ 12.0	↑ 13.9	N/A		N/A	
% Change from Previous Season	↑ 71.4	↑ 72.1	↓ 3.5		↑ 66.1	
<b>Peanuts</b>	<b>1,805</b>	<b>1,749</b>	<b>3,836</b>	<b>Lb</b>	<b>6,709,800</b>	<b>Lb</b>
% Change from Previous Estimate	↑ 0.3	↑ 0.3	↓ 1.4		↓ 1.1	
% Change from Previous Season	↑ 9.7	↑ 11.1	↑ 2.5		↑ 13.9	
<b>Rice</b>	<b>2,940</b>	<b>2,896</b>	<b>7,588</b>	<b>Lb</b>	<b>219,749</b>	<b>Cwt</b>
% Change from Previous Estimate	NC	NC	↓ 0.5		↓ 0.5	
% Change from Previous Season	↑ 1.6	↑ 1.5	↓ 0.8		↑ 0.7	

United States Department of Agriculture  
National Agricultural Statistics Service

September 12, 2024

### Chickpeas

- Planted and Harvested acres highest since 2018
- Yield is down 81 pounds from PY
- Production is highest since 2019

### Dry Edible Peas

- Yields in MT, & ND are driving Total Production, highest since 2021 & 1,444 (1,000 cwt) increase over 2023.
- MT - Yield (highest since 2020) and Production (highest since 2019).
- ND - Yield (highest on record) and Production (highest since 2019).

### Lentils

- Harvested acres in MT and ND are driving Total Production (highest since 2016).
- MT – Harvested (highest since record keeping began in 1986 & 307,000 harvested acre increase YOY) and Production (highest 2016).
- ND – Harvested (highest since 2018 & 71,000 acres increase YOY) and Production (highest since 2018).

### Peanuts

- US yield forecast to show first increase since 2021
- Highest peanut production since 2017

### Rice

- Yield has decreased from last month in Texas due to Hurricane Beryl



# September 2024 Field Crops

## Acres, Yield, and Production

	Planted (1,000 Acres)	Harvested (1,000 Acres)	Yield (Units per Acre)	Unit	Production (1,000 Units)	Unit
<b>Sorghum</b>	<b>6,300</b>	<b>5,275</b>	<b>57.3</b>	<b>Bu</b>	<b>301,995</b>	<b>Bu</b>
% Change from Previous Estimate	NC	NC	↑ 8.3		↑ 8.3	
% Change from Previous Season	↓ 12.4	↓ 13.7	↑ 10.2		↓ 5.0	
<b>Sugarbeets</b>	<b>1,101</b>	<b>1,075</b>	<b>32.9</b>	<b>Ton</b>	<b>35,388</b>	<b>Ton</b>
% Change from Previous Estimate	↓ 0.6	↓ 1.0	NC		↓ 0.9	
% Change from Previous Season	↓ 3.2	↓ 4.6	↑ 5.4		↑ 0.5	
<b>Sugarcane</b>	<b>N/A</b>	<b>924</b>	<b>38.2</b>	<b>Ton</b>	<b>35,316</b>	<b>Ton</b>
% Change from Previous Estimate	N/A	↑ 0.3	↑ 3.2		↑ 3.6	
% Change from Previous Season	N/A	↓ 0.6	↑ 5.2		↑ 4.6	
<b>Tobacco</b>	<b>N/A</b>	<b>172</b>	<b>2,040</b>	<b>Lb</b>	<b>351,260</b>	<b>Lb</b>
% Change from Previous Estimate	N/A	↑ 0.6	↓ 6.7		↓ 6.1	
% Change from Previous Season	N/A	↓ 8.2	↓ 11.5		↓ 18.8	

United States Department of Agriculture  
National Agricultural Statistics Service

September 12, 2024

### Sorghum

- Planted and harvested unchanged from PE
- Yield is up 4.4 bushel from PE and 5.3 bushel from PY
- Production is down 15.750 million bushels from PY

### Sugarbeets

- Nebraska highest production since 1994

### Sugarcane

- Florida highest prod since 2020, second highest on record

### Tobacco

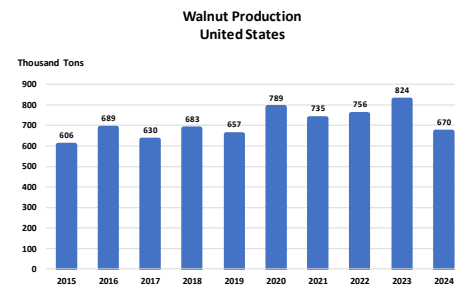
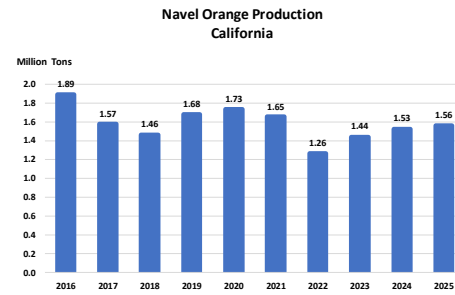
- All tobacco harvested acres are up 1,100 from the PM and down 15,430 from PY.
- Lowest harvested acres on record.
  - North Carolina harvested acres account for 69% of the US total, up 1,000 from PM and 4,880 from PY.
- Yield is down 147 pounds from PM and 265 pounds from PY.
  - All types (flue-cured, fire-cured, and burley) yields are down from PY except for dark air-cured.
  - North Carolina, the largest producing State, yield is down 200 pounds from PM and 299 pounds from PY.
- Production down 81.2 mill pounds from PY



# September 2024 Fruits and Nuts Production



	Production (1,000 Units)	Unit
<b>Navel Oranges (CA)</b>	<b>1,560</b>	<b>Ton</b>
% Change from Previous Estimate	N/A	
% Change from Previous Season	↑ 2.1	
<b>Walnuts (CA)</b>	<b>670</b>	<b>Ton</b>
% Change from Previous Estimate	N/A	
% Change from Previous Season	↓ 18.7	



United States Department of Agriculture  
National Agricultural Statistics Service

September 12, 2024

## Navel Oranges (CA)

- CA navel forecast production at 39 mil boxes is up 800,000 boxes from last season.
- This month’s forecast is based on an objective measurement survey conducted from mid-June to the beginning of September.
- The objective measurement survey indicated that fruit set was up 24 percent from last year but the average fruit size was down 5 percent from last year.
- Harvest is expected to begin in October.

## Walnuts (CA)

- Walnut production lowest since 2019.



# Selected Upcoming Reports



September 20	Cattle on Feed
September 26	Hogs and Pigs
September 27	Agricultural Prices
September 30	Grain Stocks Small Grains Summary
October 1	Cotton System Fats & Oils Grain Crushings
October 11	Cotton Ginnings Crop Production

<https://www.nass.usda.gov/Publications/index.php>

**United States Department of Agriculture**  
National Agricultural Statistics Service

September 12, 2024



# Data Users' Meeting



## USDA Fall Data Users' Meeting

October 15 & 16, 2024

Starting at 12:00pm ET

Registration information coming soon.

United States Department of Agriculture  
National Agricultural Statistics Service

September 12, 2024



# #StatChat



Join @usda\_nass on X using #StatChat to discuss the **Crop Production** report with NASS Agricultural Statistics Board Chair Lance Honig.



@usda\_nass  
#STATCHAT

**THURSDAY,  
SEPT. 12  
1 PM ET**



United States Department of Agriculture  
National Agricultural Statistics Service

September 12, 2024





**All Reports Available At**

**[www.nass.usda.gov](http://www.nass.usda.gov)**

**For Questions**

**(202) 720-2127**

**(800) 727-9540**

**[nass@usda.gov](mailto:nass@usda.gov)**