



ISSN: 1949-1964

Released September 13, 2024, by the National Agricultural Statistics Service (NASS), Agricultural Statistics Board, United States Department of Agriculture (USDA).

Eggs in Incubators on September 1 Down 6 Percent from Last Year

Turkey eggs in incubators on September 1, 2024 in the United States totaled 25.0 million, down 6 percent from September 1, 2023. Eggs in incubators were up slightly from the August 1, 2024 total of 24.9 million eggs.

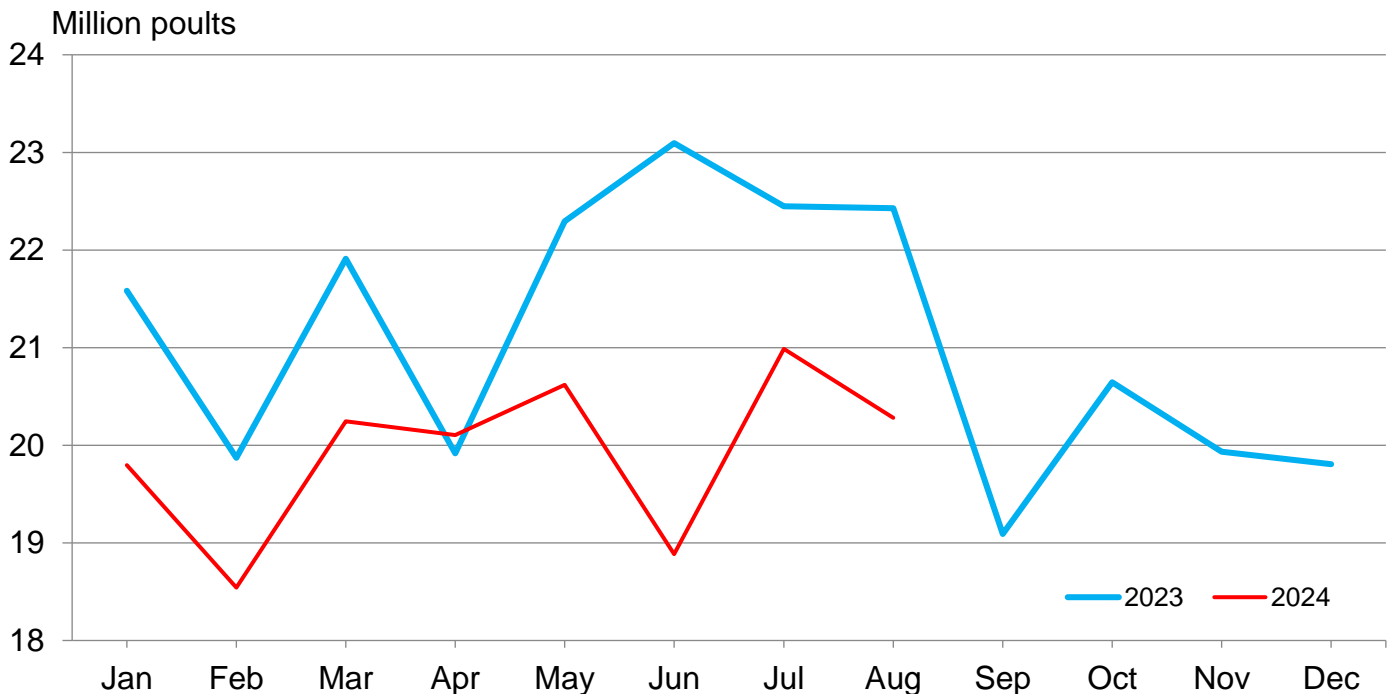
Poults Hatched During August Down 10 Percent from Last Year

Turkey poults hatched during August 2024 in the United States totaled 21.0 million, down 10 percent from August 2023. Poults hatched were down 1 percent from the July 2024 total of 21.1 million poults.

Net Poults Placed During August Down 10 Percent from Last Year

The 20.3 million net poults placed during August 2024 in the United States were down 10 percent from the number placed during the same month a year earlier. Net poult placements were down 3 percent from the July 2024 total of 21.0 million.

Net Poult Placements – United States



Eggs in Incubators and Poults Hatched by Month – United States: 2022-2025

[Blank data cells indicate estimation period has not yet begun]

Month	Eggs in incubators first of month		Percent of previous year	Poults hatched entire month		Percent of previous year
	2023-2024	2024-2025		2022-2023	2023-2024	
	(1,000 eggs)	(1,000 eggs)	(percent)	(1,000 poults)	(1,000 poults)	(percent)
September	26,636	24,983	94	22,254	21,571	97
October	27,010			22,454	22,665	101
November	25,537			22,615	21,668	96
December	25,346			22,853	21,671	95
January	24,945			23,399	21,527	92
February	25,422			21,700	20,274	93
March	24,689			23,619	21,676	92
April	26,341			21,115	21,366	101
May	25,003			23,576	21,706	92
June	22,806			23,976	19,739	82
July	23,906			22,627	21,115	93
August	24,860			23,451	21,009	90

Net Poults Placements by Month – United States: 2022-2024

[Includes imports and excludes exports.]

Month	Total all breeds		Percent of previous year	Cumulative total		Percent of previous year
	2022-2023	2023-2024		2022-2023	2023-2024	
	(1,000 poults)	(1,000 poults)	(percent)	(1,000 poults)	(1,000 poults)	(percent)
September	19,763	19,091	97	19,763	19,091	97
October	20,472	20,645	101	40,235	39,736	99
November	20,802	19,934	96	61,037	59,670	98
December	20,955	19,807	95	81,992	79,477	97
January	21,582	19,795	92	103,574	99,272	96
February	19,871	18,542	93	123,445	117,814	95
March	21,912	20,246	92	145,357	138,060	95
April	19,919	20,105	101	165,276	158,165	96
May	22,295	20,619	92	187,571	178,784	95
June	23,095	18,886	82	210,666	197,670	94
July	22,447	20,987	93	233,113	218,657	94
August	22,429	20,281	90	255,542	238,938	94

Statistical Methodology

Survey Procedures: Data for turkey hatchery estimates are collected from all known turkey hatcheries. Individual NASS regional field offices maintain a list of all known turkey hatcheries and use known sources of hatcheries to update their lists. Approximately 40 hatcheries in 20 states are contacted each month. All known turkey hatcheries hatching 15,000 or more poult annually are mailed a questionnaire as close to the first of the month as possible. Adequate time is given to respond via mail, fax, or electronic data reporting. Those that do not respond are contacted by phone. Care is exercised to ensure that all hatcheries are accounted for in the estimate.

Estimating Procedures: Sound statistical methodology is employed to derive the estimates from reported data. All data are analyzed for unusual values. Data from each operation are compared to their own past operating profile and to trends from similar operations. Data for missing operations were estimated based on similar operations or historical data. NASS regional field offices prepare these estimates by using a combination of survey indications and historic trends. Individual State estimates are reviewed by the Agricultural Statistics Board for reasonableness. Individual hatchery data are summed to State, regional, and United States totals. Only United States level estimates are published due to the limited number of hatcheries involved. The Net Poult Placement data include imported poult and exclude exported poult.

Cumulative net poult placements beginning on September 1 and ending on August 31 are shown in the monthly *Turkey Hatchery* report. This time period corresponds with the placements of poult which will reach maturity and be available for slaughter during the calendar year.

Revision Policy: Revisions are generally the result of late or corrected data. Revisions to the previous month are published in the monthly *Turkey Hatchery* report, while annual revisions are published in the *Hatchery Production - Annual Summary* report in April.

Reliability: Turkey hatchery estimates are based on a census of all known operating hatcheries and therefore, have no sampling error. However, estimates are subject to errors such as omission, duplication, and mistakes in reporting, recording, and processing the data. While these errors cannot be measured directly, they are minimized through strict quality controls in the data collection process and through a careful review of all reported data for consistency and reasonableness.

To assist in evaluating the reliability of the estimates in this report, the “Root Mean Square Error” is shown for selected items in the following table. The “Root Mean Square Error” is a statistical measure based on past performance and is computed using the differences between first and final estimates. The “Root Mean Square Error” for turkey eggs in incubators on the first day of the month over the past 24 months is 2.3 percent. This means that chances are 2 out of 3 that the final estimate will not be above or below the current estimate of 25.0 million eggs by more than 2.3 percent. Chances are 9 out of 10 that the difference will not exceed 4.0 percent.

Reliability of September Turkey Hatchery Estimates

[Based on data for the past 24 months]

Item	Root mean square error	90 percent confidence level	Difference between first and latest estimate				
			Average	Smallest	Largest	Months	
						Below latest	Above latest
	(percent)	(percent)	(1,000)	(1,000)	(1,000)	(number)	(number)
Eggs in incubators	2.3	4.0	413	13	2,202	12	12
Poult hatched	1.1	1.8	145	2	833	14	10
Net poult placements	1.2	2.1	169	2	826	13	11

Information Contacts

Listed below are the commodity specialists in the Livestock Branch of the National Agricultural Statistics Service to contact for additional information. E-mail inquiries may be sent to nass@usda.gov

Travis Averill, Chief, Livestock Branch	(202) 692-0069
Greg Lemmons, Acting Head, Poultry and Specialty Commodities Section.....	(202) 720-9526
Holly Brenize – Poultry Slaughter.....	(202) 720-0585
Liana Cuffman – Catfish and Trout, Mink, Census of Aquaculture	(202) 720-8784
Fatema Haque – Turkey Hatchery, Turkeys Raised	(202) 720-3244
Derron Martin – Chicken Hatchery, Egg Products.....	(202) 690-3237
Seth Riggins – Honey, Honey Bee Colonies	(202) 690-4870
Shulonda Shaw – Cold Storage, Capacity of Refrigerated Warehouses	(202) 720-3240
Autumn Stone – Layers, Eggs	(202) 690-3676
Takiyah Walker – Broiler Hatchery.....	(202) 720-6147

Access to NASS Reports

For your convenience, you may access NASS reports and products the following ways:

- All reports are available electronically, at no cost, on the NASS web site: www.nass.usda.gov.
- Both national and state specific reports are available via a free e-mail subscription. To set-up this free subscription, visit www.nass.usda.gov and click on “National” or “State” in upper right corner above “search” box to create an account and select the reports you would like to receive.
- Cornell’s Mann Library has launched a new website housing NASS’s and other agency’s archived reports. The new website, <https://usda.library.cornell.edu>. All email subscriptions containing reports will be sent from the new website, <https://usda.library.cornell.edu>. To continue receiving the reports via e-mail, you will have to go to the new website, create a new account and re-subscribe to the reports. If you need instructions to set up an account or subscribe, they are located at: <https://usda.library.cornell.edu/help>. You should whitelist notifications@usda-esmis.library.cornell.edu in your email client to avoid the emails going into spam/junk folders.

For more information on NASS surveys and reports, call the NASS Agricultural Statistics Hotline at (800) 727-9540, 7:30 a.m. to 4:00 p.m. ET, or e-mail: nass@usda.gov.

The U.S. Department of Agriculture (USDA) prohibits discrimination against its customers, employees, and applicants for employment on the basis of race, color, national origin, age, disability, sex, gender identity, religion, reprisal, and where applicable, political beliefs, marital status, familial or parental status, sexual orientation, or all or part of an individual's income is derived from any public assistance program, or protected genetic information in employment or in any program or activity conducted or funded by the Department. (Not all prohibited bases will apply to all programs and/or employment activities.)

If you wish to file a Civil Rights program complaint of discrimination, complete the [USDA Program Discrimination Complaint Form](#) (PDF), found online at www.ascr.usda.gov/filing-program-discrimination-complaint-usda-customer, or at any USDA office, or call (866) 632-9992 to request the form. You may also write a letter containing all of the information requested in the form. Send your completed complaint form or letter to us by mail at U.S. Department of Agriculture, Director, Office of Adjudication, 1400 Independence Avenue, S.W., Washington, D.C. 20250-9410, by fax (202) 690-7442 or email at program.intake@usda.gov.