



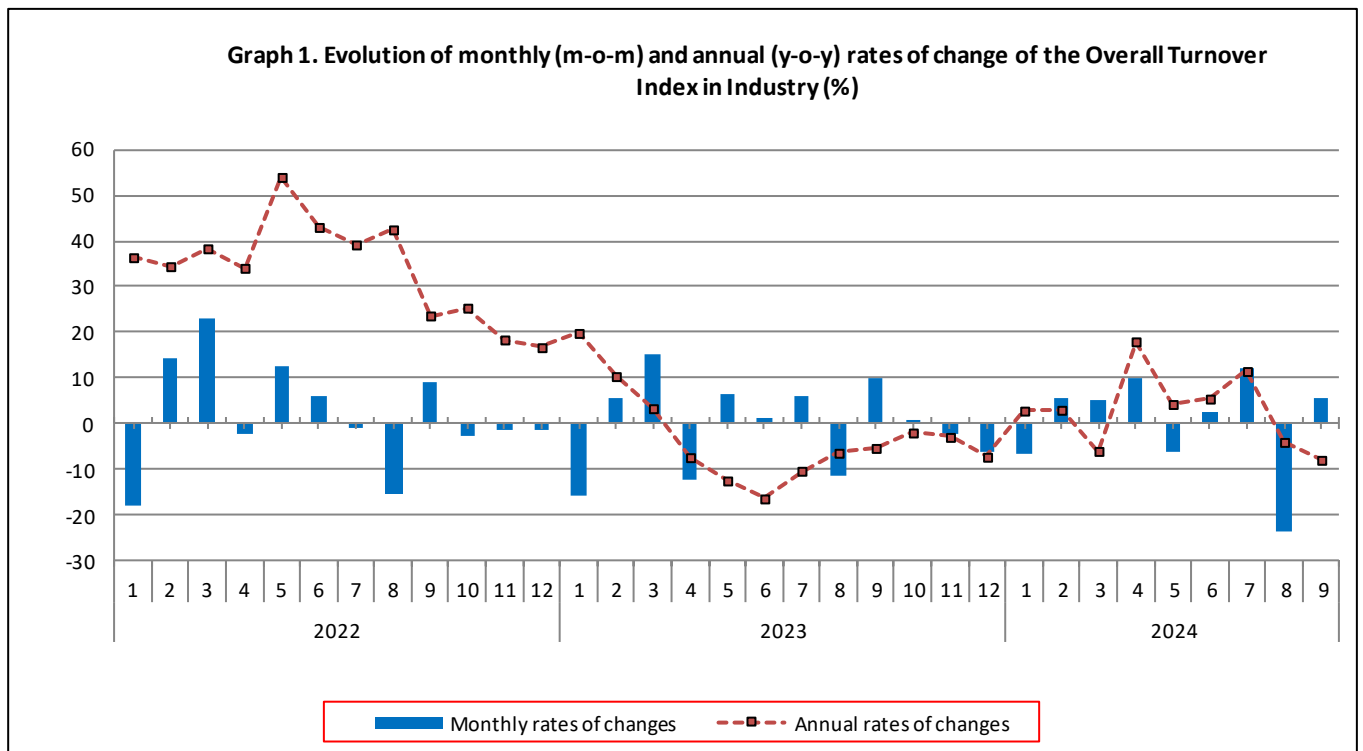
## TURNOVER INDEX IN INDUSTRY: September 2024, y-o-y decrease of 7.9%

The Hellenic Statistical Authority announces the Turnover Index in Industry with base year 2015=100.0 for September 2024, the evolution of which on the basis of provisional data, is as follows:

The Overall Turnover Index in Industry (both Domestic and Non-Domestic Market) in September 2024 recorded a decrease of 7.9% compared with the corresponding index of September 2023. The Overall Turnover Index in Industry in September 2023 decreased by 5.3% compared with the corresponding index in September 2022 (Table 1).

The Overall Turnover Index in Industry in September 2024, compared with August 2024, recorded an increase of 5.6% (Table 6).

The average Overall Turnover Index in Industry for the 12-month period from October 2023 to September 2024 increased by 1.1%, compared with the corresponding index of the 12-month period from October 2022 to September 2023. The average Overall Turnover Index in Industry for the 12-month period from October 2022 to September 2023 increased by 1.2% compared with the corresponding index of the 12-month period from October 2021 to September 2022 (Table 13).



### Information on methodological issues:

Division of Business Statistics  
Section of Manufacture-Construction Indices and Industrial Products  
Head of the Section : Diamantaki Aikaterini  
Tel: +30 213 135 2056  
E-mail: [a.diamantaki@statistics.gr](mailto:a.diamantaki@statistics.gr)

### Information on data provision:

Tel: +30 213 135 2022, 2308, 2310  
E-mail: [data.dissem@statistics.gr](mailto:data.dissem@statistics.gr)

## Evolution of the Overall Turnover Index in Industry in September 2024

### I. Annual changes of the Overall Turnover Index in Industry: September 2024 / September 2023

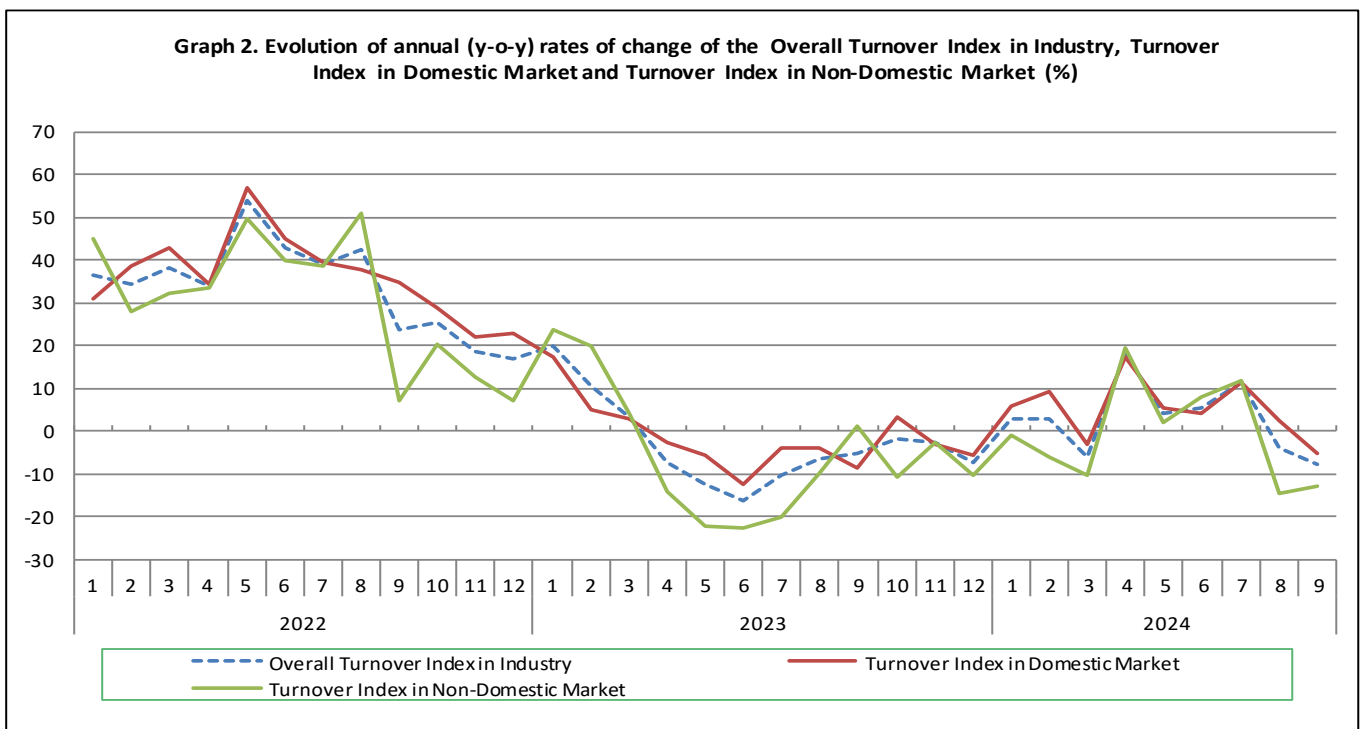
The 7.9% decrease in the Overall Turnover Index in Industry in September 2024, compared with the corresponding index in September 2023, was due to the following:

#### 1. Changes in the sub-indices of the industrial sections (Table 1):

- The Turnover Index in Manufacturing decreased by 8.1%. The decrease was mainly the result of the annual changes of the sub-indices in the following 2-digit divisions: coke and refined petroleum products, motor vehicles, trailers and semi-trailers, wearing apparel.
- The Turnover Index in Mining and quarrying increased by 10.0%. The increase was the result of the annual changes of the sub-indices in the following 2-digit divisions: mining of metal ores, other mining and quarrying products.

#### 2. Changes in the sub-indices in Domestic and Non-Domestic Markets:

- The Turnover Index in Industry in Non-Domestic Market decreased by 12.8% (Table 3).
- The Turnover Index in Industry in Domestic Market decreased by 5.1% (Table 2).



### II. Annual changes of the Turnover Index in Industry in Domestic Market: September 2024 / September 2023

The 5.1% decrease of the Turnover Index in Industry in Domestic Market in September 2024, compared with September 2023, is due to the annual changes in the sub-indices of the following industrial sections (Table 2):

- The Turnover Index in Manufacturing decreased by 5.4%. The decrease was mainly the result of the annual changes of the sub-indices in the following 2-digit divisions: coke and refined petroleum products, motor vehicles, trailers and semi-trailers, leather and related products, wearing apparel.
- The Turnover Index in Mining and quarrying increased by 31.9%. The increase was the result of the annual changes of the sub-indices in the following 2-digit divisions: mining of metal ores, other mining and quarrying products.

### III. Annual changes of the Turnover Index in Industry in Non-Domestic Market: September 2024 / September 2023

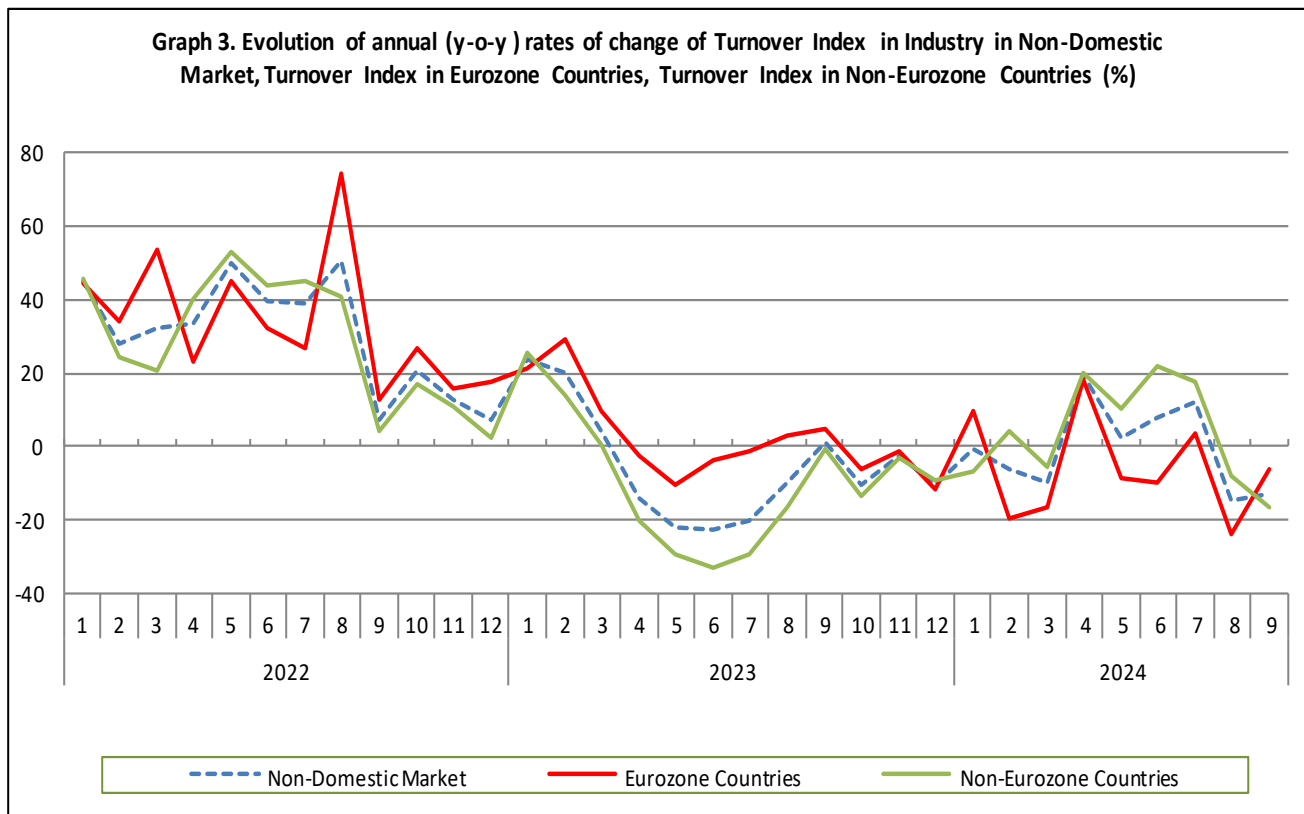
The 12.8% decrease of the Turnover Index in Industry in Non-Domestic Market in September 2024, compared with September 2023, was due to the following:

#### 1. Changes in the sub-indices of the industrial sections (Table 3):

- The Turnover Index in Manufacturing decreased by 12.8%. The decrease was mainly the result of the annual changes of the sub-indices in the following 2-digit divisions: coke and refined petroleum products, repair and installation of machinery and equipment, furniture, fabricated metal products, except machinery and equipment.
- The Turnover Index in Mining and quarrying decreased by 7.4%. The decrease was the result of the annual change of the sub-index in the following 2-digit division: other mining and quarrying products.

#### 2. Changes in the sub-indices in Eurozone and Non-Eurozone countries:

- The Turnover Index in Industry in Non-Eurozone countries decreased by 16.5% (Table 5).
- The Turnover Index in Industry in Eurozone countries decreased by 6.1% (Table 4).



### IV. Monthly changes of the Overall Turnover Index in Industry: September 2024 / August 2024

The 5.6% increase of the Overall Turnover Index in Industry in September 2024, compared with the corresponding index in August 2024, was due to the following:

#### 1. Changes in the sub-indices of industrial sections (Table 6):

- The Turnover Index in Manufacturing increased by 5.7%.
- The Turnover Index in Mining and quarrying decreased by 4.6%.

#### 2. Changes in the sub-indices in Domestic and Non-Domestic Market:

- The Turnover Index in Industry in Non-Domestic Market increased by 12.5% (Table 8).
- The Turnover Index in Industry in Domestic Market increased by 2.3% (Table 7).

**Table 1. Annual rates of change of the Turnover Index in Industry: Total Market**

Base year: 2015=100.0

| Code                             | Division   | Weights       | September     |               |               | Rate of change (%) |              |
|----------------------------------|--|---------------|---------------|---------------|---------------|--------------------|--------------|
|                                  |  |               | 2024*         | 2023          | 2022          | 2024/2023          | 2023/2022    |
| <b>OVERALL INDEX</b>             |  |               | <b>156.03</b> | <b>169.47</b> | <b>179.01</b> | <b>-7.9</b>        | <b>-5.3</b>  |
| <b>B</b>                         | <b>MINING AND QUARRYING</b>  | <b>100.00</b> | <b>122.24</b> | <b>111.08</b> | <b>134.61</b> | <b>10.0</b>        | <b>-17.5</b> |
| 05-06-09                         | Mining of coal and lignite - Extraction of crude petroleum and natural gas - Mining support service activities | 21.19         | 8.44          | 17.52         | 33.50         | -51.8              | -47.7        |
| 07                               | Mining of metal ores   | 17.56         | 252.31        | 191.61        | 260.67        | 31.7               | -26.5        |
| 08                               | Other mining and quarrying products  | 61.25         | 124.31        | 120.35        | 133.44        | 3.3                | -9.8         |
| <b>C MANUFACTURING</b>           |  |               | <b>156.48</b> | <b>170.26</b> | <b>179.61</b> | <b>-8.1</b>        | <b>-5.2</b>  |
| 10                               | Food   | 23.39         | 153.26        | 147.60        | 147.70        | 3.8                | -0.1         |
| 11                               | Beverages  | 3.57          | 186.48        | 165.92        | 157.94        | 12.4               | 5.1          |
| 12                               | Tobacco products   | 1.19          | 252.07        | 205.88        | 230.00        | 22.4               | -10.5        |
| 13                               | Textiles   | 1.28          | 116.85        | 119.46        | 134.19        | -2.2               | -11.0        |
| 14                               | Wearing apparel  | 1.80          | 88.98         | 99.72         | 111.05        | -10.8              | -10.2        |
| 15                               | Leather and related products   | 0.34          | 112.21        | 101.01        | 94.25         | 11.1               | 7.2          |
| 16                               | Wood and products of wood and cork, except furniture   | 0.72          | 141.44        | 128.12        | 167.05        | 10.4               | -23.3        |
| 17                               | Paper and paper products   | 2.44          | 148.49        | 147.89        | 174.83        | 0.4                | -15.4        |
| 18                               | Printing and reproduction of recorded products   | 1.17          | 139.16        | 112.42        | 120.52        | 23.8               | -6.7         |
| 19                               | Coke and refined petroleum products  | 28.73         | 129.34        | 201.55        | 199.76        | -35.8              | 0.9          |
| 20                               | Chemicals and chemical products  | 4.43          | 167.48        | 169.84        | 230.86        | -1.4               | -26.4        |
| 21                               | Basic pharmaceutical products and pharmaceutical preparations  | 3.67          | 259.03        | 238.67        | 216.68        | 8.5                | 10.2         |
| 22                               | Rubber and plastic products  | 3.47          | 150.31        | 145.79        | 160.58        | 3.1                | -9.2         |
| 23                               | Other non-metallic mineral products  | 3.31          | 186.40        | 168.40        | 157.12        | 10.7               | 7.2          |
| 24                               | Basic metals   | 7.19          | 190.20        | 169.28        | 233.91        | 12.4               | -27.6        |
| 25                               | Fabricated metal products, except machinery and equipment  | 4.51          | 143.38        | 137.25        | 152.60        | 4.5                | -10.1        |
| 26                               | Computers, electronic and optical products   | 0.78          | 289.81        | 268.33        | 277.66        | 8.0                | -3.4         |
| 27                               | Electrical equipment   | 2.65          | 235.69        | 206.42        | 247.82        | 14.2               | -16.7        |
| 28                               | Machinery and equipment n.e.c.   | 1.56          | 130.52        | 125.12        | 132.93        | 4.3                | -5.9         |
| 29                               | Motor vehicles, trailers and semi-trailers   | 0.23          | 147.33        | 196.24        | 140.40        | -24.9              | 39.8         |
| 30                               | Other transport equipment  | 0.52          | 80.56         | 80.55         | 94.99         | 0.02               | -15.2        |
| 31                               | Furniture  | 0.97          | 151.38        | 150.36        | 150.79        | 0.7                | -0.3         |
| 32                               | Other manufacturing  | 0.66          | 145.59        | 145.06        | 143.83        | 0.4                | 0.9          |
| 33                               | Repair and installation of machinery and equipment   | 1.42          | 133.52        | 131.81        | 119.83        | 1.3                | 10.0         |
| <b>MAIN INDUSTRIAL GROUPINGS</b> |  |               |               |               |               |                    |              |
| 1                                | Energy   | 28.57         | 128.39        | 200.14        | 198.53        | -35.8              | 0.8          |
| 2                                | Intermediate goods   | 28.29         | 170.53        | 159.67        | 197.12        | 6.8                | -19.0        |
| 3                                | Capital goods  | 7.00          | 141.57        | 139.04        | 148.65        | 1.8                | -6.5         |
| 4                                | Consumer Durables  | 1.86          | 177.30        | 186.92        | 162.40        | -5.1               | 15.1         |
| 5                                | Consumer Non-Durables  | 34.28         | 168.89        | 157.27        | 154.91        | 7.4                | 1.5          |

\* Provisional data

Note: The indices and the percentage changes are rounded up to two and one decimal digits, respectively, when published.

**Table 2. Annual rates of change of the Turnover Index in Industry: Domestic Market**

Base year: 2015=100.0

| Code                             | Division   | Weights       | September     |               |               | Rate of change (%) |              |
|----------------------------------|--|---------------|---------------|---------------|---------------|--------------------|--------------|
|                                  |  |               | 2024*         | 2023          | 2022          | 2024/2023          | 2023/2022    |
| <b>OVERALL INDEX</b>             |  |               | <b>153.52</b> | <b>161.84</b> | <b>177.26</b> | <b>-5.1</b>        | <b>-8.7</b>  |
| <b>B</b>                         | <b>MINING AND QUARRYING</b>  | <b>100.00</b> | <b>114.88</b> | <b>87.09</b>  | <b>99.66</b>  | <b>31.9</b>        | <b>-12.6</b> |
| 05-06-09                         | Mining of coal and lignite - Extraction of crude petroleum and natural gas - Mining support service activities | 31.66         | 8.63          | 20.37         | 39.60         | -57.6              | -48.6        |
| 07                               | Mining of metal ores   | 12.83         | 171.98        | 88.88         | 115.52        | 93.5               | -23.1        |
| 08                               | Other mining and quarrying products  | 55.50         | 162.29        | 124.73        | 130.26        | 30.1               | -4.2         |
| <b>C</b>                         | <b>MANUFACTURING</b>   | <b>100.00</b> | <b>153.96</b> | <b>162.70</b> | <b>178.16</b> | <b>-5.4</b>        | <b>-8.7</b>  |
| 10                               | Food   | 28.50         | 138.94        | 138.82        | 137.05        | 0.1                | 1.3          |
| 11                               | Beverages  | 4.86          | 184.91        | 167.55        | 155.51        | 10.4               | 7.7          |
| 12                               | Tobacco products   | 0.51          | 363.69        | 295.52        | 259.77        | 23.1               | 13.8         |
| 13                               | Textiles   | 1.11          | 109.07        | 113.34        | 123.99        | -3.8               | -8.6         |
| 14                               | Wearing apparel  | 1.77          | 98.40         | 105.34        | 107.14        | -6.6               | -1.7         |
| 15                               | Leather and related products   | 0.41          | 89.40         | 104.16        | 93.68         | -14.2              | 11.2         |
| 16                               | Wood and products of wood and cork, except furniture   | 0.96          | 132.63        | 121.79        | 161.84        | 8.9                | -24.7        |
| 17                               | Paper and paper products   | 3.12          | 142.24        | 141.99        | 168.63        | 0.2                | -15.8        |
| 18                               | Printing and reproduction of recorded products   | 1.63          | 106.99        | 92.46         | 101.47        | 15.7               | -8.9         |
| 19                               | Coke and refined petroleum products  | 24.90         | 130.51        | 190.30        | 223.38        | -31.4              | -14.8        |
| 20                               | Chemicals and chemical products  | 4.90          | 163.22        | 163.14        | 232.76        | 0.1                | -29.9        |
| 21                               | Basic pharmaceutical products and pharmaceutical preparations  | 3.85          | 249.80        | 222.28        | 202.20        | 12.4               | 9.9          |
| 22                               | Rubber and plastic products  | 3.31          | 149.71        | 150.08        | 156.68        | -0.2               | -4.2         |
| 23                               | Other non-metallic mineral products  | 3.31          | 215.97        | 186.31        | 173.80        | 15.9               | 7.2          |
| 24                               | Basic metals   | 3.49          | 224.83        | 202.60        | 270.77        | 11.0               | -25.2        |
| 25                               | Fabricated metal products, except machinery and equipment  | 4.25          | 179.43        | 155.67        | 178.02        | 15.3               | -12.6        |
| 26                               | Computers, electronic and optical products   | 0.40          | 177.87        | 98.65         | 222.30        | 80.3               | -55.6        |
| 27                               | Electrical equipment   | 2.24          | 245.34        | 219.90        | 271.91        | 11.6               | -19.1        |
| 28                               | Machinery and equipment n.e.c.   | 1.46          | 140.29        | 134.14        | 130.50        | 4.6                | 2.8          |
| 29                               | Motor vehicles, trailers and semi-trailers   | 0.27          | 152.30        | 212.71        | 144.60        | -28.4              | 47.1         |
| 30                               | Other transport equipment  | 0.58          | 63.28         | 65.48         | 77.93         | -3.4               | -16.0        |
| 31                               | Furniture  | 1.35          | 148.73        | 142.67        | 139.06        | 4.2                | 2.6          |
| 32                               | Other manufacturing  | 0.88          | 143.36        | 142.87        | 141.45        | 0.3                | 1.0          |
| 33                               | Repair and installation of machinery and equipment   | 1.92          | 141.07        | 136.25        | 126.83        | 3.5                | 7.4          |
| <b>MAIN INDUSTRIAL GROUPINGS</b> |  |               |               |               |               |                    |              |
| 1                                | Energy   | 24.89         | 129.19        | 188.50        | 221.53        | -31.5              | -14.9        |
| 2                                | Intermediate goods   | 25.73         | 173.18        | 162.87        | 198.96        | 6.3                | -18.1        |
| 3                                | Capital goods  | 7.19          | 155.67        | 143.50        | 149.14        | 8.5                | -3.8         |
| 4                                | Consumer Durables  | 2.31          | 138.39        | 150.69        | 149.19        | -8.2               | 1.0          |
| 5                                | Consumer Non-Durables  | 39.88         | 156.50        | 148.50        | 142.34        | 5.4                | 4.3          |

\* Provisional data

Note: The indices and the percentage changes are rounded up to two and one decimal digits, respectively, when published.

**Table 3. Annual rates of change of the Turnover Index in Industry: Non-Domestic Market**

Base year: 2015=100.0

| Code                             | Division   | Weights       | September     |               |               | Rate of change (%) |              |
|----------------------------------|--|---------------|---------------|---------------|---------------|--------------------|--------------|
|                                  |  |               | 2024*         | 2023          | 2022          | 2024/2023          | 2023/2022    |
| <b>OVERALL INDEX</b>             |  |               | <b>160.97</b> | <b>184.50</b> | <b>182.46</b> | <b>-12.8</b>       | <b>1.1</b>   |
| <b>B</b>                         | <b>MINING AND QUARRYING</b>  | <b>100.00</b> | <b>131.83</b> | <b>142.38</b> | <b>180.21</b> | <b>-7.4</b>        | <b>-21.0</b> |
| 05-06-09                         | Mining of coal and lignite - Extraction of crude petroleum and natural gas - Mining support service activities | 7.53          | 7.35          | 1.84          | 0.00          | 298.9              | -            |
| 07                               | Mining of metal ores   | 23.74         | 308.99        | 264.10        | 363.10        | 17.0               | -27.3        |
| 08                               | Other mining and quarrying products  | 68.74         | 84.29         | 115.74        | 136.79        | -27.2              | -15.4        |
| <b>C MANUFACTURING</b>           |  | <b>100.00</b> | <b>161.48</b> | <b>185.23</b> | <b>182.50</b> | <b>-12.8</b>       | <b>1.5</b>   |
| 10                               | Food   | 13.27         | 214.23        | 184.94        | 193.06        | 15.8               | -4.2         |
| 11                               | Beverages  | 1.01          | 201.41        | 150.39        | 181.14        | 33.9               | -17.0        |
| 12                               | Tobacco products   | 2.53          | 207.07        | 169.73        | 218.00        | 22.0               | -22.1        |
| 13                               | Textiles   | 1.61          | 127.52        | 127.85        | 148.18        | -0.3               | -13.7        |
| 14                               | Wearing apparel  | 1.86          | 71.21         | 89.14         | 118.41        | -20.1              | -24.7        |
| 15                               | Leather and related products   | 0.19          | 210.23        | 87.44         | 96.70         | 140.4              | -9.6         |
| 16                               | Wood and products of wood and cork, except furniture   | 0.24          | 211.38        | 178.32        | 208.42        | 18.5               | -14.4        |
| 17                               | Paper and paper products   | 1.11          | 183.25        | 180.70        | 209.27        | 1.4                | -13.7        |
| 18                               | Printing and reproduction of recorded products   | 0.26          | 539.84        | 361.09        | 357.89        | 49.5               | 0.9          |
| 19                               | Coke and refined petroleum products  | 36.32         | 127.74        | 216.84        | 167.65        | -41.1              | 29.3         |
| 20                               | Chemicals and chemical products  | 3.50          | 179.29        | 188.41        | 225.59        | -4.8               | -16.5        |
| 21                               | Basic pharmaceutical products and pharmaceutical preparations  | 3.30          | 280.35        | 276.54        | 250.11        | 1.4                | 10.6         |
| 22                               | Rubber and plastic products  | 3.79          | 151.34        | 138.37        | 167.33        | 9.4                | -17.3        |
| 23                               | Other non-metallic mineral products  | 3.31          | 127.75        | 132.88        | 124.05        | -3.9               | 7.1          |
| 24                               | Basic metals   | 14.54         | 173.73        | 153.43        | 216.38        | 13.2               | -29.1        |
| 25                               | Fabricated metal products, except machinery and equipment  | 5.03          | 82.99         | 106.41        | 110.01        | -22.0              | -3.3         |
| 26                               | Computers, electronic and optical products   | 1.52          | 348.05        | 356.62        | 306.46        | -2.4               | 16.4         |
| 27                               | Electrical equipment   | 3.44          | 223.21        | 189.02        | 216.69        | 18.1               | -12.8        |
| 28                               | Machinery and equipment n.e.c.   | 1.76          | 114.47        | 110.31        | 136.93        | 3.8                | -19.4        |
| 29                               | Motor vehicles, trailers and semi-trailers   | 0.14          | 127.95        | 132.11        | 124.08        | -3.1               | 6.5          |
| 30                               | Other transport equipment  | 0.40          | 129.82        | 123.47        | 143.62        | 5.1                | -14.0        |
| 31                               | Furniture  | 0.21          | 185.09        | 248.34        | 300.20        | -25.5              | -17.3        |
| 32                               | Other manufacturing  | 0.22          | 162.81        | 162.04        | 162.26        | 0.5                | -0.1         |
| 33                               | Repair and installation of machinery and equipment   | 0.43          | 67.20         | 92.78         | 58.31         | -27.6              | 59.1         |
| <b>MAIN INDUSTRIAL GROUPINGS</b> |  |               |               |               |               |                    |              |
| 1                                | Energy   | 35.82         | 127.30        | 216.07        | 167.04        | -41.1              | 29.3         |
| 2                                | Intermediate goods   | 33.33         | 166.50        | 154.79        | 194.33        | 7.6                | -20.3        |
| 3                                | Capital goods  | 6.62          | 111.43        | 129.49        | 147.59        | -13.9              | -12.3        |
| 4                                | Consumer Durables  | 0.98          | 358.41        | 355.58        | 223.90        | 0.8                | 58.8         |
| 5                                | Consumer Non-Durables  | 23.25         | 210.74        | 186.90        | 197.39        | 12.8               | -5.3         |

\* Provisional data

Note: The indices and the percentage changes are rounded up to two and one decimal digits, respectively, when published.

**Table 4. Annual rates of change of the Turnover Index in Industry: Eurozone Countries**

Base year: 2015=100.0

| Code                             | Sections and main groupings | September     |               |               | Rate of change (%) |            |
|----------------------------------|-----------------------------|---------------|---------------|---------------|--------------------|------------|
|                                  |                             | 2024*         | 2023          | 2022          | 2024/2023          | 2023/2022  |
| <b>OVERALL INDEX</b>             |                             | <b>180.70</b> | <b>192.43</b> | <b>183.71</b> | <b>-6.1</b>        | <b>4.7</b> |
| <b>INDUSTRIAL SECTIONS</b>       |                             |               |               |               |                    |            |
| <b>B</b>                         | MINING AND QUARRYING        | 60.53         | 96.67         | 188.45        | -37.4              | -48.7      |
| <b>C</b>                         | MANUFACTURING               | 183.11        | 194.35        | 183.62        | -5.8               | 5.8        |
| <b>MAIN INDUSTRIAL GROUPINGS</b> |                             |               |               |               |                    |            |
| <b>1</b>                         | Energy                      | 99.36         | 200.84        | 133.40        | -50.5              | 50.6       |
| <b>2</b>                         | Intermediate goods          | 181.50        | 165.66        | 207.02        | 9.6                | -20.0      |
| <b>3</b>                         | Capital goods               | 169.92        | 199.38        | 163.19        | -14.8              | 22.2       |
| <b>4</b>                         | Consumer Durables           | 582.91        | 524.53        | 275.50        | 11.1               | 90.4       |
| <b>5</b>                         | Consumer Non-Durables       | 224.18        | 204.67        | 191.93        | 9.5                | 6.6        |

\* Provisional data

**Table 5. Annual rates of change of the Turnover Index in Industry: Non-Eurozone Countries**

Base year: 2015=100.0

| Code                             | Sections and main groupings | September     |               |               | Rate of change (%) |             |
|----------------------------------|-----------------------------|---------------|---------------|---------------|--------------------|-------------|
|                                  |                             | 2024*         | 2023          | 2022          | 2024/2023          | 2023/2022   |
| <b>OVERALL INDEX</b>             |                             | <b>150.49</b> | <b>180.28</b> | <b>181.79</b> | <b>-16.5</b>       | <b>-0.8</b> |
| <b>INDUSTRIAL SECTIONS</b>       |                             |               |               |               |                    |             |
| <b>B</b>                         | MINING AND QUARRYING        | 178.64        | 172.39        | 174.80        | 3.6                | -1.4        |
| <b>C</b>                         | MANUFACTURING               | 150.03        | 180.41        | 181.91        | -16.8              | -0.8        |
| <b>MAIN INDUSTRIAL GROUPINGS</b> |                             |               |               |               |                    |             |
| <b>1</b>                         | Energy                      | 135.35        | 220.45        | 176.73        | -38.6              | 24.7        |
| <b>2</b>                         | Intermediate goods          | 156.71        | 147.71        | 186.06        | 6.1                | -20.6       |
| <b>3</b>                         | Capital goods               | 91.61         | 105.80        | 142.30        | -13.4              | -25.7       |
| <b>4</b>                         | Consumer Durables           | 203.38        | 238.92        | 188.26        | -14.9              | 26.9        |
| <b>5</b>                         | Consumer Non-Durables       | 197.67        | 169.61        | 202.71        | 16.5               | -16.3       |

\* Provisional data

Note: The indices and the percentage changes are rounded up to two and one decimal digits, respectively, when published.

**Table 6. Monthly rate of change of the Turnover Index in Industry: Total Market**

Base year: 2015=100.0

| Code                             | Sections and main groupings | September<br>2024* | August<br>2024** | Rate of change (%)<br>Sep. 2024 / Aug. 2024 |
|----------------------------------|-----------------------------|--------------------|------------------|---|
| <b>OVERALL INDEX</b>             |                             | <b>156.03</b>      | <b>147.76</b>    | <b>5.6</b>                                  |
| <b>INDUSTRIAL SECTIONS</b>       |                             |                    |                  |   |
| B                                | MINING AND QUARRYING        | 122.24             | 128.18           | -4.6  |
| C                                | MANUFACTURING               | 156.48             | 148.03           | 5.7   |
| <b>MAIN INDUSTRIAL GROUPINGS</b> |                             |                    |                  |   |
| 1                                | Energy                      | 128.39             | 168.25           | -23.7                                       |
| 2                                | Intermediate goods          | 170.53             | 134.10           | 27.2  |
| 3                                | Capital goods               | 141.57             | 102.92           | 37.6  |
| 4                                | Consumer Durables           | 177.30             | 102.00           | 73.8  |
| 5                                | Consumer Non-Durables       | 168.89             | 153.60           | 10.0  |

**Table 7. Monthly rate of change of the Turnover Index in Industry: Domestic Market**

Base year: 2015=100.0

| Code                             | Sections and main groupings | September<br>2024* | August<br>2024** | Rate of change (%)<br>Sep. 2024 / Aug. 2024 |
|----------------------------------|-----------------------------|--------------------|------------------|---|
| <b>OVERALL INDEX</b>             |                             | <b>153.52</b>      | <b>150.12</b>    | <b>2.3</b>                                  |
| <b>INDUSTRIAL SECTIONS</b>       |                             |                    |                  |   |
| B                                | MINING AND QUARRYING        | 114.88             | 79.64            | 44.2  |
| C                                | MANUFACTURING               | 153.96             | 150.93           | 2.0   |
| <b>MAIN INDUSTRIAL GROUPINGS</b> |                             |                    |                  |   |
| 1                                | Energy                      | 129.19             | 188.88           | -31.6                                       |
| 2                                | Intermediate goods          | 173.18             | 131.49           | 31.7  |
| 3                                | Capital goods               | 155.67             | 112.65           | 38.2  |
| 4                                | Consumer Durables           | 138.39             | 94.71            | 46.1  |
| 5                                | Consumer Non-Durables       | 156.50             | 147.92           | 5.8   |

**Table 8. Monthly rate of change of the Turnover Index in Industry: Non-Domestic Market**

Base year: 2015=100.0

| Code                             | Sections and main groupings | September<br>2024* | August<br>2024** | Rate of change (%)<br>Sep. 2024 / Aug. 2024 |
|----------------------------------|-----------------------------|--------------------|------------------|---|
| <b>OVERALL INDEX</b>             |                             | <b>160.97</b>      | <b>143.12</b>    | <b>12.5</b>                                 |
| <b>INDUSTRIAL SECTIONS</b>       |                             |                    |                  |   |
| B                                | MINING AND QUARRYING        | 131.83             | 191.52           | -31.2                                       |
| C                                | MANUFACTURING               | 161.48             | 142.27           | 13.5  |
| <b>MAIN INDUSTRIAL GROUPINGS</b> |                             |                    |                  |   |
| 1                                | Energy                      | 127.30             | 140.02           | -9.1  |
| 2                                | Intermediate goods          | 166.50             | 138.05           | 20.6  |
| 3                                | Capital goods               | 111.43             | 82.12            | 35.7  |
| 4                                | Consumer Durables           | 358.41             | 135.96           | 163.6                                       |
| 5                                | Consumer Non-Durables       | 210.74             | 172.82           | 21.9  |

\* Provisional data \*\* Revised data

Note: The indices and the percentage changes are rounded up to two and one decimal digits, respectively, when published.



**Table 9. Monthly rate of change of the Turnover Index in Industry: Eurozone Countries**

Base year: 2015=100.0

| Code                             | Sections and main groupings | September<br>2024* | August<br>2024** | Rate of change (%)<br>Sep. 2024/Aug. 2024 |
|----------------------------------|-----------------------------|--------------------|------------------|---|
| <b>OVERALL INDEX</b>             |                             | <b>180.70</b>      | <b>146.15</b>    | <b>23.6</b>                               |
| <b>INDUSTRIAL SECTIONS</b>       |                             |                    |                  |   |
| <b>B</b>                         | MINING AND QUARRYING        | 60.53              | 260.05           | -76.7                                     |
| <b>C</b>                         | MANUFACTURING               | 183.11             | 143.87           | 27.3                                      |
| <b>MAIN INDUSTRIAL GROUPINGS</b> |                             |                    |                  |   |
| <b>1</b>                         | Energy                      | 99.36              | 84.44            | 17.7                                      |
| <b>2</b>                         | Intermediate goods          | 181.50             | 141.21           | 28.5                                      |
| <b>3</b>                         | Capital goods               | 169.92             | 112.76           | 50.7                                      |
| <b>4</b>                         | Consumer Durables           | 582.91             | 222.53           | 161.9                                     |
| <b>5</b>                         | Consumer Non-Durables       | 224.18             | 197.15           | 13.7                                      |

\* Provisional data \*\* Revised data

**Table 10. Monthly rate of change of the Turnover Index in Industry: Non-Eurozone Countries**

Base year: 2015=100.0

| Code                             | Sections and main groupings | September<br>2024* | August<br>2024** | Rate of change (%)<br>Sep. 2024/Aug. 2024 |
|----------------------------------|-----------------------------|--------------------|------------------|---|
| <b>OVERALL INDEX</b>             |                             | <b>150.49</b>      | <b>141.51</b>    | <b>6.3</b>                                |
| <b>INDUSTRIAL SECTIONS</b>       |                             |                    |                  |   |
| <b>B</b>                         | MINING AND QUARRYING        | 178.64             | 146.54           | 21.9                                      |
| <b>C</b>                         | MANUFACTURING               | 150.03             | 141.42           | 6.1                                       |
| <b>MAIN INDUSTRIAL GROUPINGS</b> |                             |                    |                  |   |
| <b>1</b>                         | Energy                      | 135.35             | 156.03           | -13.3                                     |
| <b>2</b>                         | Intermediate goods          | 156.71             | 136.00           | 15.2                                      |
| <b>3</b>                         | Capital goods               | 91.61              | 71.73            | 27.7                                      |
| <b>4</b>                         | Consumer Durables           | 203.38             | 76.18            | 167.0                                     |
| <b>5</b>                         | Consumer Non-Durables       | 197.67             | 149.15           | 32.5                                      |

\* Provisional data \*\* Revised data

Note: The indices and the percentage changes are rounded up to two and one decimal digits, respectively, when published.

**Table 11. Evolution of the Turnover Index in Industry (y-o-y changes): Total Market**

Base year: 2015=100.0

| Year and month | Overall Index (Total Market) |                           | Turnover Index in Industry in Domestic Market |                           | Turnover Index in Industry in Non-Domestic Market |                           |
|----------------|------------------------------|---------------------------|---|---------------------------|---|---------------------------|
|                | Index                        | Annual rate of change (%) | Index   | Annual rate of change (%) | Index   | Annual rate of change (%) |
| <b>2023:</b>   |                              |                           |   |                           |   |                           |
| 9              | 169.47                       | -5.3                      | 161.84  | -8.7                      | 184.50  | 1.1                       |
| 10             | 170.86                       | -2.0                      | 167.84  | 3.4                       | 176.81  | -10.7                     |
| 11             | 166.81                       | -2.9                      | 157.61  | -3.0                      | 184.91  | -2.7                      |
| 12             | 156.82                       | -7.3                      | 154.55  | -5.6                      | 161.30  | -10.3                     |
| <b>2024*:</b>  |                              |                           |   |                           |   |                           |
| 1              | 146.42                       | 2.8                       | 130.75  | 5.6                       | 177.29  | -0.9                      |
| 2              | 154.67                       | 3.0                       | 147.18  | 9.2                       | 169.43  | -6.1                      |
| 3              | 162.41                       | -6.0                      | 151.93  | -3.2                      | 183.07  | -10.2                     |
| 4              | 178.77                       | 18.0                      | 170.35  | 17.3                      | 195.37  | 19.3                      |
| 5              | 168.06                       | 4.3                       | 165.28  | 5.5                       | 173.54  | 2.1                       |
| 6              | 172.31                       | 5.5                       | 169.07  | 4.3                       | 178.71  | 7.7                       |
| 7              | 193.46                       | 11.5                      | 191.38  | 11.3                      | 197.58  | 12.0                      |
| 8              | 147.76                       | -4.0                      | 150.12  | 2.2                       | 143.12  | -14.7                     |
| 9              | 156.03                       | -7.9                      | 153.52  | -5.1                      | 160.97  | -12.8                     |

\*Provisional data

**Table 12. Evolution of the Turnover Index in Industry (y-o-y changes): Non-Domestic Market**

Base year: 2015=100.0

| Year and month | Overall Index (Non-Domestic Market) |                           | Turnover Index in Industry in Eurozone Countries |                           | Turnover Index in Industry in Non-Eurozone Countries |                           |
|----------------|-------------------------------------|---------------------------|--|---------------------------|--|---------------------------|
|                | Index                               | Annual rate of change (%) | Index  | Annual rate of change (%) | Index  | Annual rate of change (%) |
| <b>2023:</b>   |                                     |                           |  |                           |  |                           |
| 9              | 184.50                              | 1.1                       | 192.43   | 4.7                       | 180.28   | -0.8                      |
| 10             | 176.81                              | -10.7                     | 202.80   | -6.3                      | 163.00   | -13.4                     |
| 11             | 184.91                              | -2.7                      | 195.82   | -1.6                      | 179.11   | -3.3                      |
| 12             | 161.30                              | -10.3                     | 150.02   | -11.9                     | 167.30   | -9.5                      |
| <b>2024*:</b>  |                                     |                           |  |                           |  |                           |
| 1              | 177.29                              | -0.9                      | 208.06   | 9.4                       | 160.94   | -7.0                      |
| 2              | 169.43                              | -6.1                      | 179.20   | -20.1                     | 164.24   | 4.4                       |
| 3              | 183.07                              | -10.2                     | 206.65   | -16.8                     | 170.53   | -5.4                      |
| 4              | 195.37                              | 19.3                      | 220.68   | 18.4                      | 181.91   | 19.8                      |
| 5              | 173.54                              | 2.1                       | 191.95   | -8.8                      | 163.76   | 10.2                      |
| 6              | 178.71                              | 7.7                       | 190.14   | -9.8                      | 172.63   | 21.6                      |
| 7              | 197.58                              | 12.0                      | 213.10   | 3.5                       | 189.33   | 17.7                      |
| 8              | 143.12                              | -14.7                     | 146.15   | -24.1                     | 141.51   | -8.4                      |
| 9              | 160.97                              | -12.8                     | 180.70   | -6.1                      | 150.49   | -16.5                     |

\*Provisional data

Note: The indices and the percentage changes are rounded up to two and one decimal digits, respectively, when published.

**Table 13. Average indices and rates of change (%) of the 12-month periods of Turnover Index in Industry: Total Market**  
**Base year: 2015=100.0**

| Code                             | Division   | Average Indices of 12-month periods |                         |                         | Rate of change (%) |            |
|----------------------------------|--|-------------------------------------|-------------------------|-------------------------|--------------------|------------|
|                                  |  | Oct. 2023-<br>Sep. 2024*            | Oct. 2022-<br>Sep. 2023 | Oct. 2021-<br>Sep. 2022 | 2024/2023          | 2023/2022  |
| <b>OVERALL INDEX</b>             |  | <b>164.53</b>                       | <b>162.79</b>           | <b>160.91</b>           | <b>1.1</b>         | <b>1.2</b> |
| <b>B</b>                         | <b>MINING AND QUARRYING</b>  | <b>129.95</b>                       | <b>113.08</b>           | <b>106.25</b>           | <b>14.9</b>        | <b>6.4</b> |
| <b>05-06-09</b>                  | Mining of coal and lignite - Extraction of crude petroleum and natural gas - Mining support service activities | 39.44                               | 37.37                   | 19.45                   | 5.5                | 92.1       |
| <b>07</b>                        | Mining of metal ores   | 228.35                              | 172.86                  | 175.99                  | 32.1               | -1.8       |
| <b>08</b>                        | Other mining and quarrying products  | 133.05                              | 122.13                  | 116.28                  | 8.9                | 5.0        |
| <b>C</b>                         | <b>MANUFACTURING</b>   | <b>165.00</b>                       | <b>163.46</b>           | <b>161.65</b>           | <b>0.9</b>         | <b>1.1</b> |
| <b>10</b>                        | Food   | 149.79                              | 144.33                  | 131.30                  | 3.8                | 9.9        |
| <b>11</b>                        | Beverages  | 168.17                              | 152.63                  | 134.13                  | 10.2               | 13.8       |
| <b>12</b>                        | Tobacco products   | 245.04                              | 219.07                  | 163.89                  | 11.9               | 33.7       |
| <b>13</b>                        | Textiles   | 119.98                              | 127.30                  | 128.93                  | -5.8               | -1.3       |
| <b>14</b>                        | Wearing apparel  | 84.32                               | 91.27                   | 92.43                   | -7.6               | -1.3       |
| <b>15</b>                        | Leather and related products   | 87.59                               | 88.20                   | 79.33                   | -0.7               | 11.2       |
| <b>16</b>                        | Wood and products of wood and cork, except furniture   | 140.83                              | 138.23                  | 139.91                  | 1.9                | -1.2       |
| <b>17</b>                        | Paper and paper products   | 145.00                              | 153.37                  | 146.74                  | -5.5               | 4.5        |
| <b>18</b>                        | Printing and reproduction of recorded products   | 124.42                              | 114.58                  | 115.49                  | 8.6                | -0.8       |
| <b>19</b>                        | Coke and refined petroleum products  | 167.65                              | 175.45                  | 186.55                  | -4.4               | -6.0       |
| <b>20</b>                        | Chemicals and chemical products  | 163.76                              | 167.83                  | 177.87                  | -2.4               | -5.6       |
| <b>21</b>                        | Basic pharmaceutical products and pharmaceutical preparations  | 260.69                              | 242.07                  | 202.81                  | 7.7                | 19.4       |
| <b>22</b>                        | Rubber and plastic products  | 146.69                              | 144.20                  | 152.27                  | 1.7                | -5.3       |
| <b>23</b>                        | Other non-metallic mineral products  | 178.84                              | 160.82                  | 140.45                  | 11.2               | 14.5       |
| <b>24</b>                        | Basic metals   | 183.51                              | 190.41                  | 216.28                  | -3.6               | -12.0      |
| <b>25</b>                        | Fabricated metal products, except machinery and equipment  | 144.06                              | 136.86                  | 136.56                  | 5.3                | 0.2        |
| <b>26</b>                        | Computers, electronic and optical products   | 268.36                              | 250.86                  | 219.71                  | 7.0                | 14.2       |
| <b>27</b>                        | Electrical equipment   | 238.60                              | 220.09                  | 210.19                  | 8.4                | 4.7        |
| <b>28</b>                        | Machinery and equipment n.e.c.   | 140.35                              | 140.11                  | 136.47                  | 0.2                | 2.7        |
| <b>29</b>                        | Motor vehicles, trailers and semi-trailers   | 178.08                              | 179.19                  | 170.59                  | -0.6               | 5.0        |
| <b>30</b>                        | Other transport equipment  | 96.35                               | 89.60                   | 91.07                   | 7.5                | -1.6       |
| <b>31</b>                        | Furniture  | 162.10                              | 156.99                  | 146.41                  | 3.3                | 7.2        |
| <b>32</b>                        | Other manufacturing  | 138.60                              | 136.58                  | 128.30                  | 1.5                | 6.5        |
| <b>33</b>                        | Repair and installation of machinery and equipment   | 140.91                              | 127.24                  | 110.65                  | 10.7               | 15.0       |
| <b>MAIN INDUSTRIAL GROUPINGS</b> |  |                                     |                         |                         |                    |            |
| <b>1</b>                         | Energy   | 166.73                              | 174.46                  | 185.30                  | -4.4               | -5.9       |
| <b>2</b>                         | Intermediate goods   | 167.46                              | 166.97                  | 172.69                  | 0.3                | -3.3       |
| <b>3</b>                         | Capital goods  | 149.13                              | 143.32                  | 135.71                  | 4.0                | 5.6        |
| <b>4</b>                         | Consumer Durables  | 173.83                              | 162.14                  | 140.36                  | 7.2                | 15.5       |
| <b>5</b>                         | Consumer Non-Durables  | 162.92                              | 153.61                  | 137.12                  | 6.1                | 12.0       |

\*Provisional data

Note: The indices and the percentage changes are rounded up to two and one decimal digits, respectively, when published.

## METHODOLOGICAL NOTES

|  |  |
|--|--|
| <b>Generally</b>                       | The Industrial Turnover Index is an indicator of an enterprise's business cycle showing the monthly evolution of the market of goods and services in industry. The first compilation of the Turnover Index was completed by the Hellenic Statistical Authority in 2006, with base year 2000=100.0 and is compiled from 2000 onwards.   |
| <b>Purpose of the index</b>            | The purpose of this index is to measure the monthly activity of the industrial sector in terms of value. Turnover comprises the totals invoiced by the observation units during the reference period and corresponds to the market sales of goods or services supplied to third parties. The purposes and the characteristics of the Turnover Index apply, as well, to the indices for the distinction between domestic and non-domestic turnover.   |
| <b>Legal Framework</b>                 | The compilation and publication of the Turnover Index is based on the framework of the implementation of Council Regulation (EC) No 1165/1998 concerning short-term statistics (STS-R), as well as Regulation (EC) No 1158/2005 of the European Parliament and of the Council amending Council Regulation (EC) No 1165/1998. Furthermore, this index is governed by Regulation (EC) No 1893/2006 of the European Parliament and of the Council, by Commission Regulation (EC) No 656/2007, by Regulation (EC) No 451/2008 of the Council, by Regulation (EU) No 2019/2152 of the European Parliament and of the Council on European business statistics, as well as Commission Implementing Regulation (EU) No 2020/1197 laying down technical specifications and arrangements pursuant to Regulation (EU) No 2019/2152. |
| <b>Reference period</b>                | Month.   |
| <b>Base year</b>                       | 2015=100.0.  |
| <b>Revision</b>                        | The latest revision of the Turnover Index in Industry (base year 2015=100.0) took place in the framework of Council Regulation (EC) No 1165/1998 concerning short-term statistics. In accordance with this regulation the index is revised every five years, in years ending in 0 or 5.  |
| <b>Statistical classifications</b>     | At the level of classes of economic activities, the statistical classification of economic activities NACE Rev. 2 of EU was used (Regulation No 1893/2006), while at the level of main industrial groupings, the allocation of two-digit and three-digit NACE Rev. 2 headings to categories of aggregate classification was used, in accordance with Commission Regulation No 656/2007.  |
| <b>Geographical coverage</b>           | The index covers the whole Country.  |
| <b>Coverage of economic activities</b> | The Turnover Index in Industry is compiled for all activities listed in Sections B (mining and quarrying) and C (manufacturing) of the NACE Rev. 2 statistical classification.   |
| <b>Computation of the Index</b>        | The Turnover Index in Industry is a fixed base index. This index is calculated at a first stage at the four-digit level of economic activity and subsequently, with the implementation of appropriate weighting coefficients, the index is calculated at higher levels (three-level and two-level of economic activity) as well as at the level of Main Industrial Groupings (MIGs).   |
| <b>Publication of data</b>             | The Turnover Index in Industry (2015=100.0) is released since August 2019 with June 2019 as first reference month. Data with base year 2015=100.0 are available from January 2000 onwards.   |
| <b>References</b>                      | More information about the methodology concerning the compilation and calculation of the index and for the time series is available on the website of the Hellenic Statistical Authority (ELSTAT) ( <a href="http://www.statistics.gr/en/statistics/-/publication/DKT24/">http://www.statistics.gr/en/statistics/-/publication/DKT24/</a> ).   |