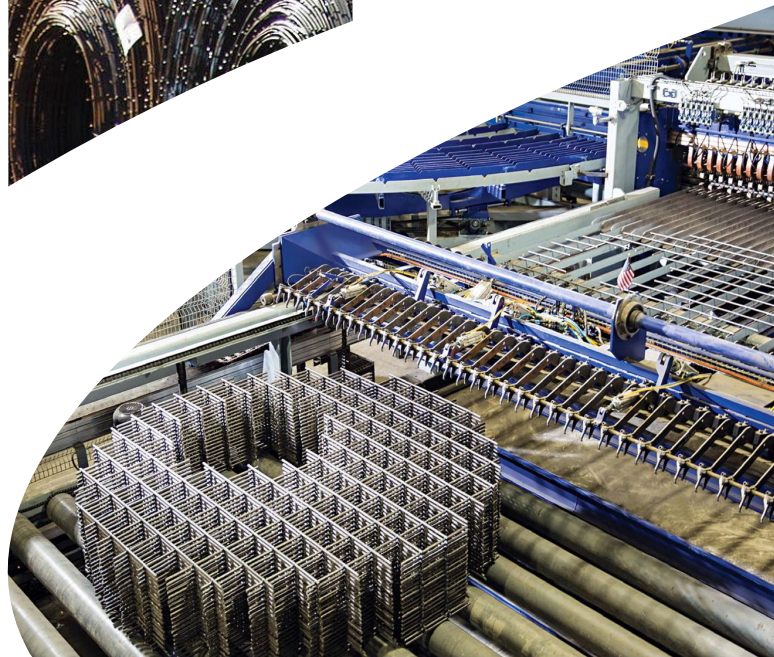




INVESTOR PRESENTATION

October 21, 2024



FORWARD -LOOKING STATEMENTS

This presentation contains forward-looking statements within the meaning of the safe harbor provisions of the Private Securities Litigation Reform Act of 1995. When used in this presentation, the words “believes,” “anticipates,” “expects,” “estimates,” “appears,” “plans,” “intends,” “may,” “should,” “could” and similar expressions are intended to identify forward-looking statements. Although we believe that our plans, intentions and expectations reflected in or suggested by such forward-looking statements are reasonable, they are subject to a number of risks and uncertainties, and we can provide no assurances that such plans, intentions or expectations will be implemented or achieved. All forward-looking statements are based on information that is current as of the date of this presentation. Many of these risks and uncertainties are discussed in detail in our filings with the U.S. Securities and Exchange Commission, in particular, our Annual Report on Form 10-K for the year ended September 30, 2023.

All forward-looking statements attributable to us or persons acting on our behalf are expressly qualified in their entirety by these cautionary statements. All forward-looking statements speak only to the respective dates on which such statements are made and we do not undertake any obligation to publicly release the results of any revisions to these forward-looking statements that may be made to reflect any future events or circumstances after the date of such statements or to reflect the occurrence of anticipated or unanticipated events, except as may be required by law.



FOUNDED IN
1953

HEADQUARTERED
IN MOUNT AIRY, NC

NATION'S LARGEST
MANUFACTURER OF STEEL WIRE
REINFORCING PRODUCTS

929
EMPLOYEES

12
FACILITIES

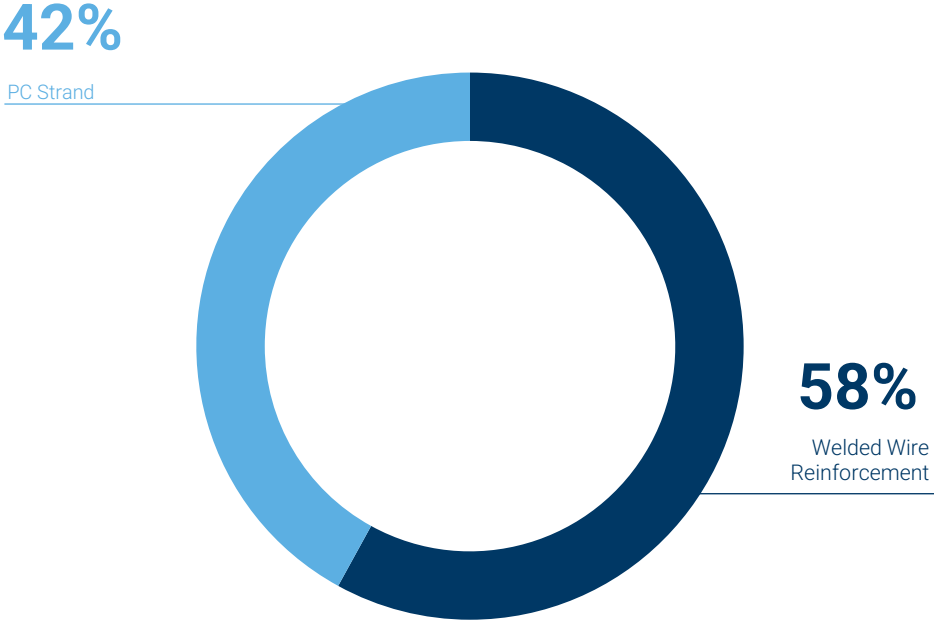
NYSE: IIN



BUSINESS OVERVIEW

- Our operations are entirely focused on the manufacturing and marketing of steel wire reinforcing products for concrete construction applications.
- Our concrete reinforcing products consist of two lines: Welded Wire Reinforcement (“WWR”) and Prestressed Concrete Strand (“PC Strand”).
- Headquartered in Mount Airy, North Carolina, we operate twelve manufacturing facilities located in the United States (nine WWR plants and three PC strand plants).

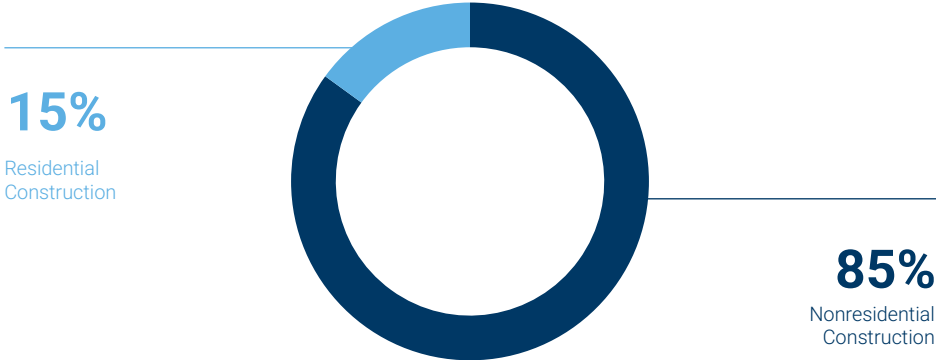
2024 Sales by Product Line



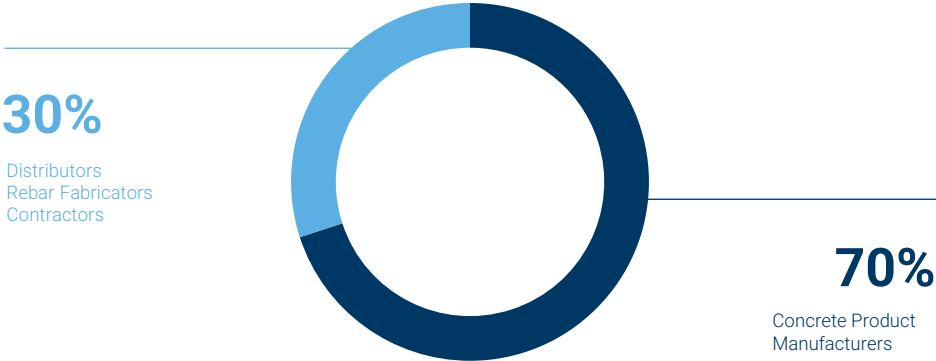
BUSINESS OVERVIEW

- Our products are sold primarily to manufacturers of concrete products that are used in nonresidential construction.
- Virtually all sales are in the U.S. (< 1% foreign in 2024).
- Demand is both cyclical and seasonal. Shipments are usually higher in the third and fourth quarters of the fiscal year (*April to September*) when weather conditions are more conducive to construction activity, and lower in the first and second quarters.
- Our customer base is diverse with minimal concentration.

Sales by End Use



Sales by Customer Category



OUR BUSINESS STRATEGY IS FOCUSED ON

ACHIEVING

Leadership positions
in our markets



OPERATING

As the lowest cost producer
in our industry



PURSUING

Growth opportunities in our core
businesses that further our penetration
of the markets we currently serve
or expand our footprint





PRODUCT OVERVIEW

Welded Wire Reinforcement (“WWR”)

Produced as both standard and specially engineered reinforcing products for use in nonresidential and residential construction. Broad offering of WWR products includes:

- **Engineered Structural Mesh (“ESM”)** - Engineered made-to-order reinforcing products that are used as the primary reinforcement in concrete elements or structures, frequently serving as a substitute for hot-rolled rebar.
- **Concrete Pipe Reinforcement (“CPR”)** - Engineered made-to-order reinforcing products that are used as the primary reinforcement in concrete pipe and box culverts for drainage and sewage systems, water treatment facilities and other related applications.
- **Standard Welded Wire Reinforcement (“SWWR”)** - Secondary reinforcing products made-to-stock in standard styles for crack control applications in residential and light nonresidential construction, including driveways, sidewalks and a wide range of slab-on-grade applications.



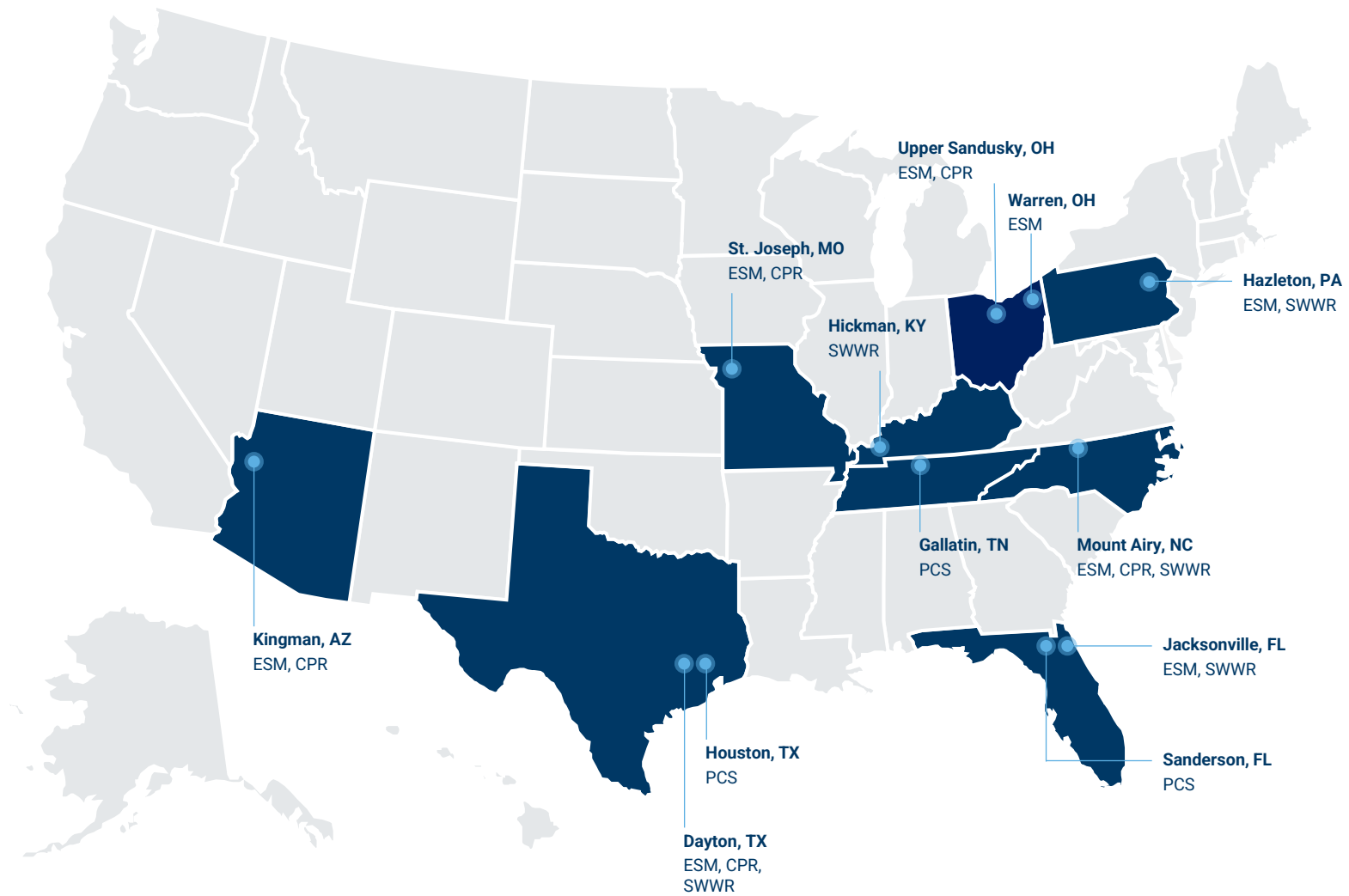
PRODUCT OVERVIEW

Prestressed Concrete Strand (“PC Strand” or “PCS”)

Seven-wire strand used to impart compression forces into precast concrete elements and structures, providing reinforcement for bridges, parking decks, buildings and other concrete structures.

- High tensile strength makes it possible to cast longer spans and thinner sections.
- PC strand is used for both pretensioned and posttensioned reinforcing applications.
 - **Pretensioned** – Strands are tensioned and anchored at the ends of a form. Anchors are released after the concrete has been placed and cured, creating compression forces within the element.
 - **Posttensioned** – Strands are tensioned after the concrete has been placed and cured.

MANUFACTURING LOCATIONS





COMPETITIVE POSITION

Primary Competitors

Welded Wire Reinforcement

- Wire Mesh Corp.
- Concrete Reinforcements Inc.
- National Wire Products
- Davis Wire
- Oklahoma/Iowa Steel and Wire

PC Strand

- Sumiden Wire Products
- Wire Mesh Corp.
- Imports

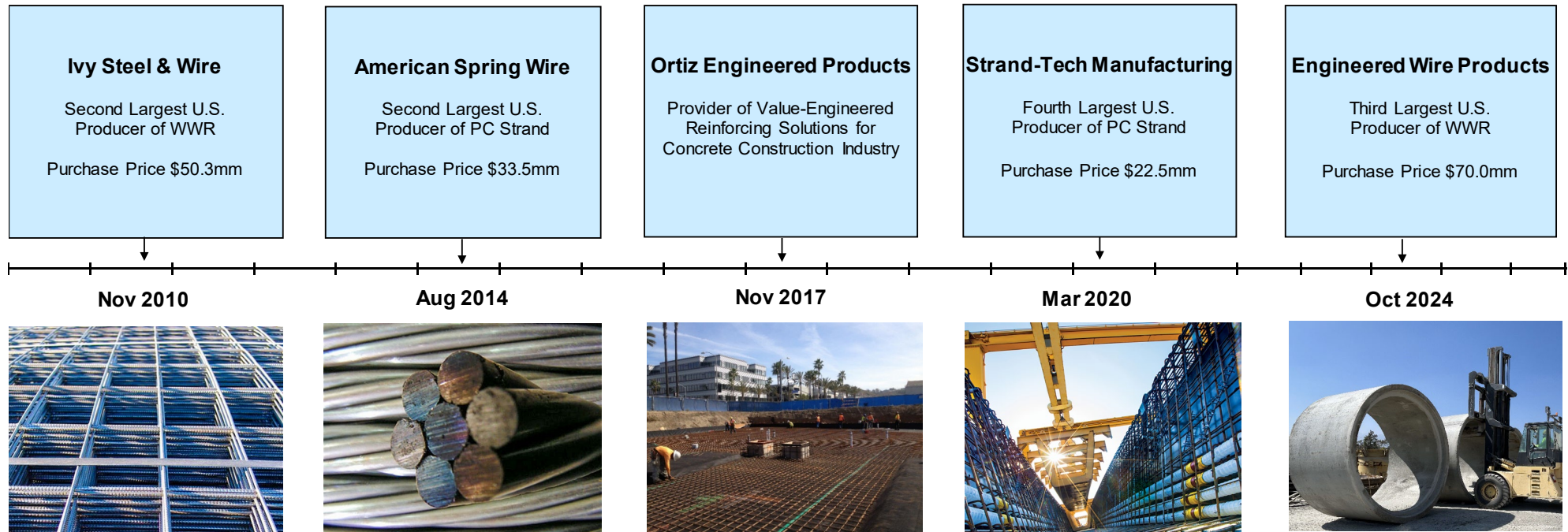
- Largest domestic producer of WWR and PC strand and only producer with a national market presence.
- Strong market leadership positions extend across all product lines/families.
- Ability to bundle WWR and PC strand products, which are used in combination for many concrete reinforcing applications.

GROWTH STRATEGY - ORGANIC



- Continued conversion of rebar users to ESM for cast-in-place applications represents a substantial growth opportunity that leverages our manufacturing and engineering capabilities.
- Eliminates labor intensive process of placing and hand-tying required for rebar, yielding significant cost savings and accelerating the construction process.
- Fewer tons of steel are generally required when ESM is specified due to its higher yield strength (80,000 PSI for ESM versus 60,000 PSI for rebar).

GROWTH STRATEGY - ACQUISITIONS



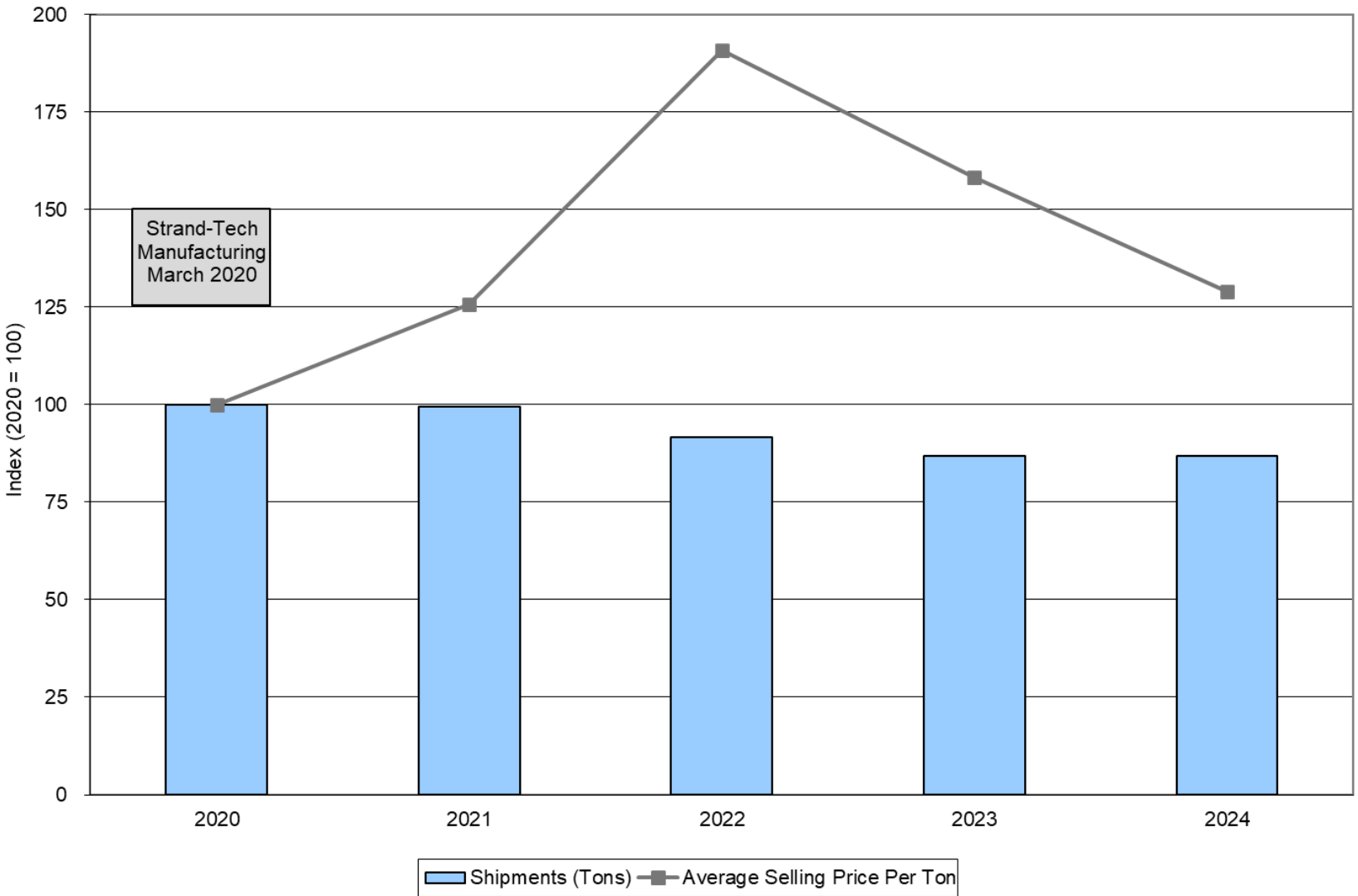
- Focused on pursuing additional strategic opportunities in existing core businesses or related products sold into same markets that offer substantial synergy potential.

FINANCIALS – NET SALES

(\$ Millions)

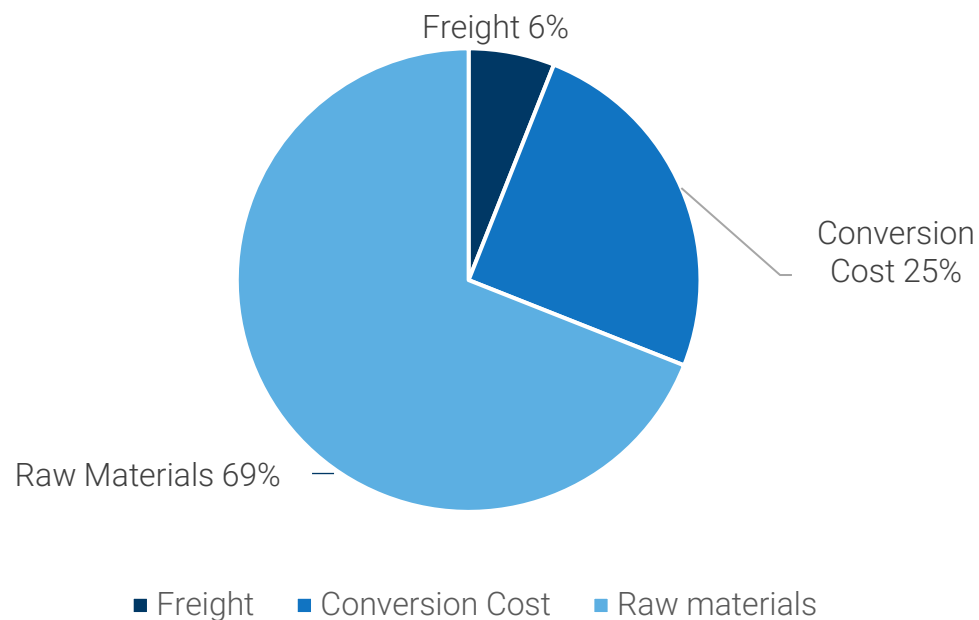


FINANCIALS – SHIPMENTS AND AVERAGE SELLING PRICES (ANNUAL)



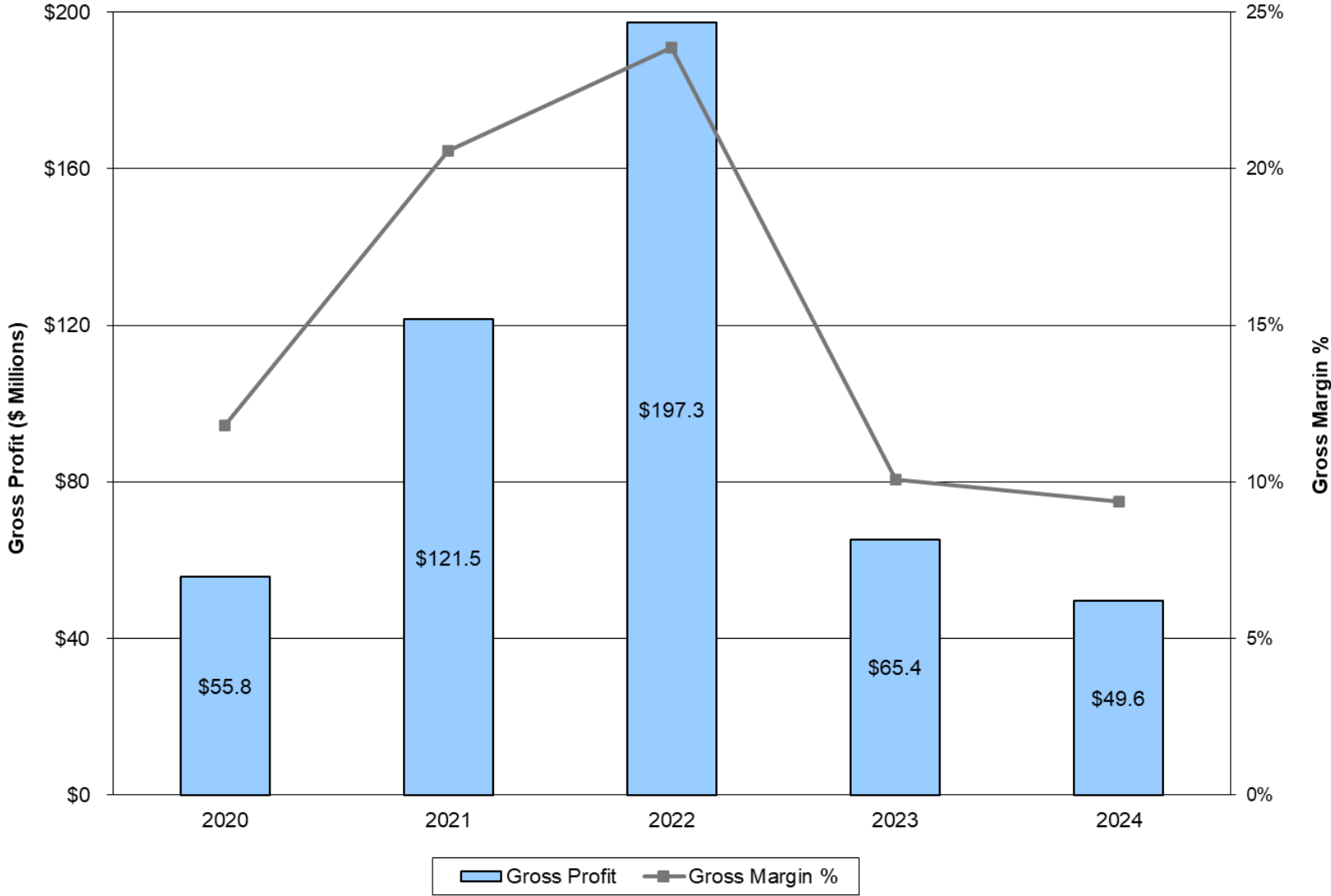
FINANCIALS – GROSS PROFIT DRIVERS (ANNUAL)

% of 2024 Cost of Sales

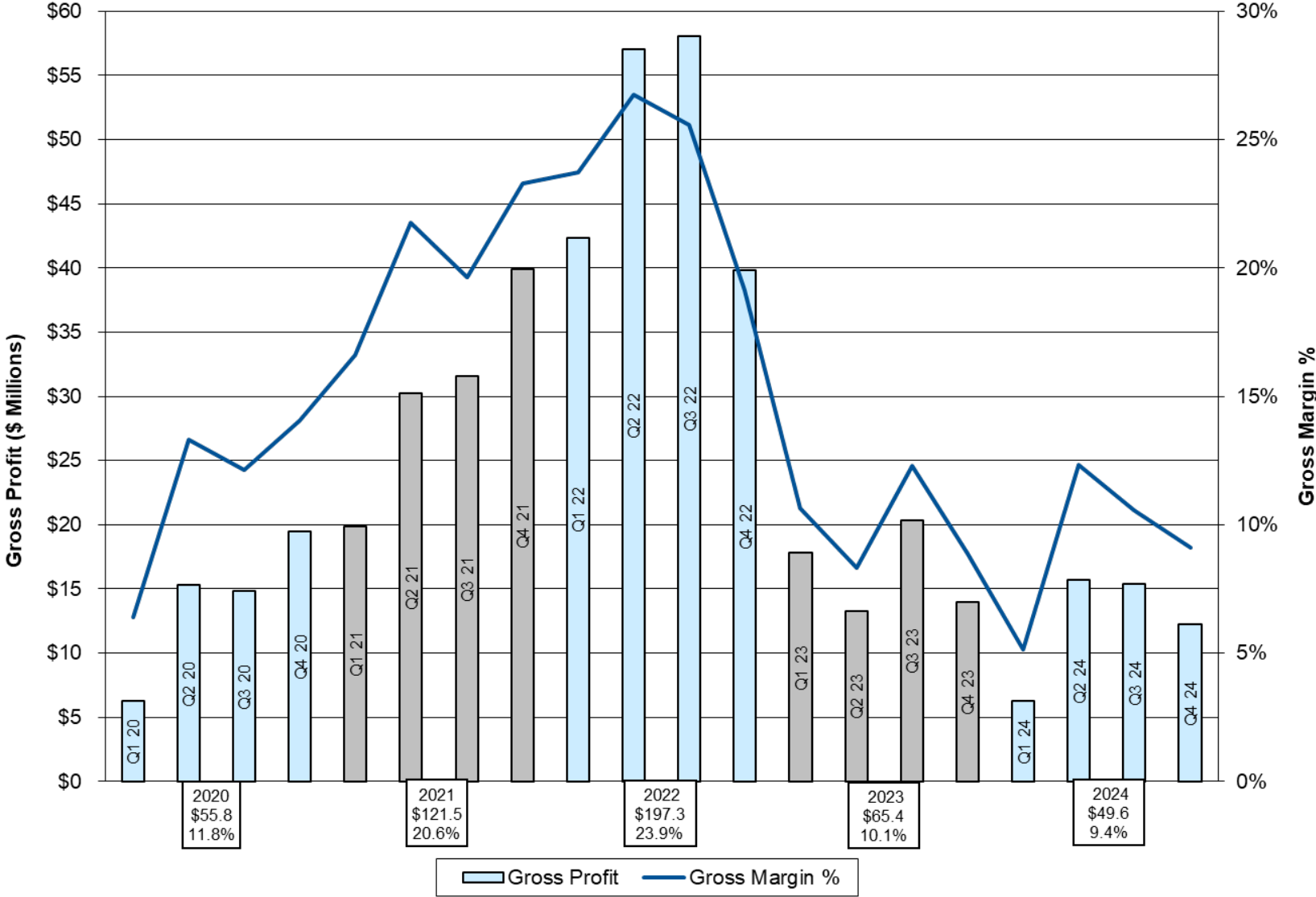


- **Shipments and operating volumes**
- **Spreads**
Difference between selling price and raw material cost (hot-rolled steel wire rod)
- **Unit manufacturing costs**
Impacted by operating volumes and cost management.

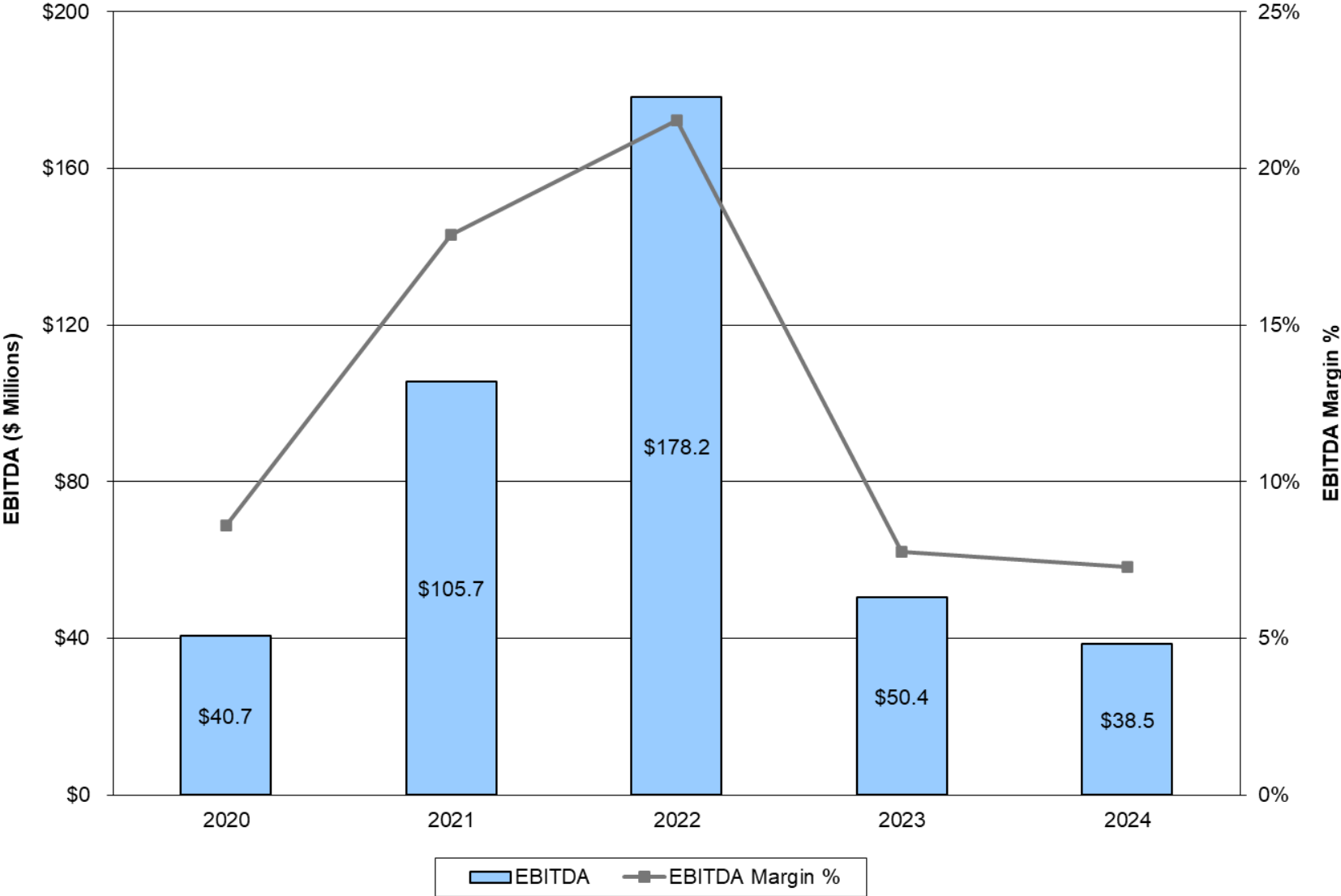
FINANCIALS – GROSS PROFIT (ANNUAL)



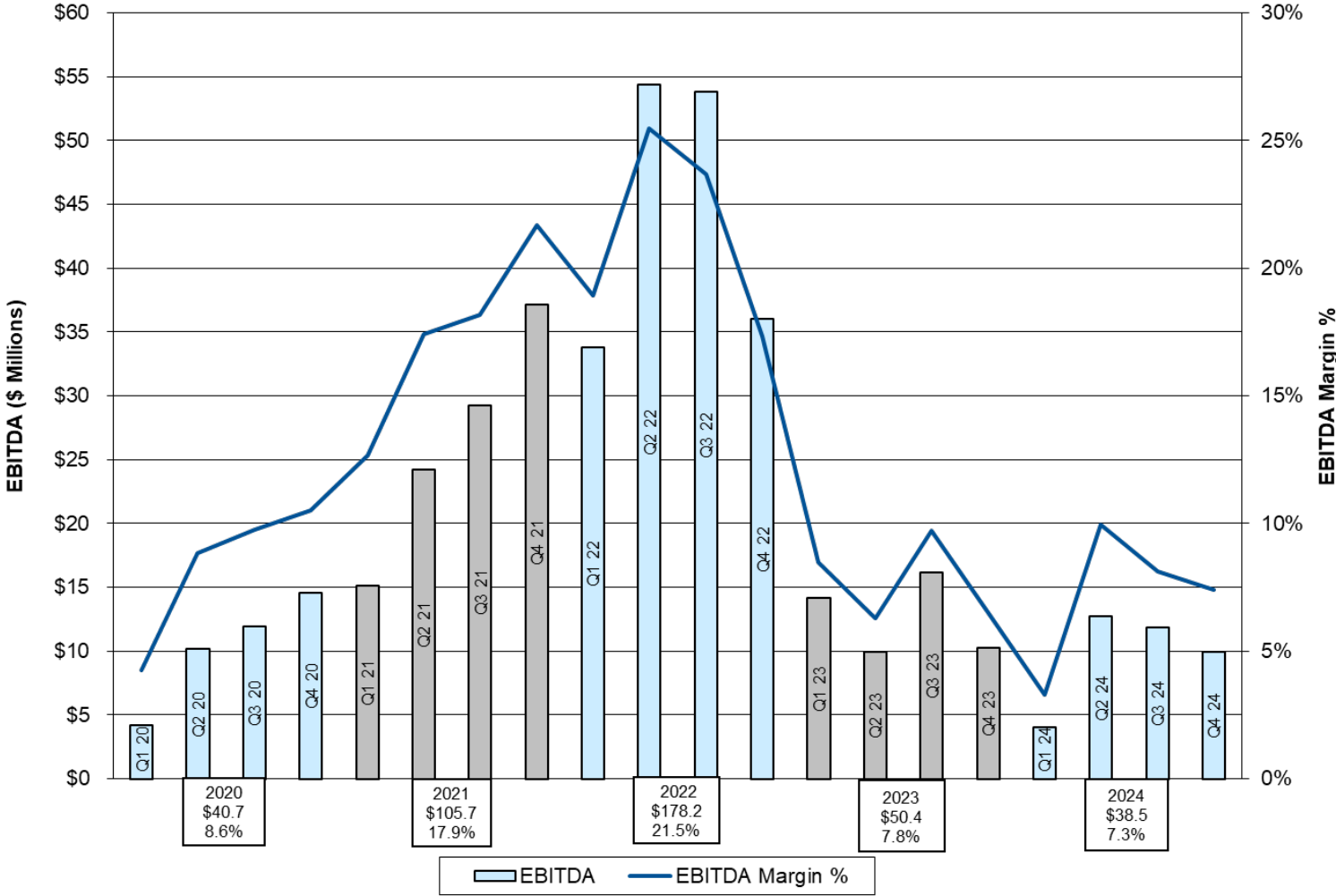
FINANCIALS – GROSS PROFIT (QUARTERLY)



FINANCIALS – EBITDA (ANNUAL)



FINANCIALS – EBITDA (QUARTERLY)

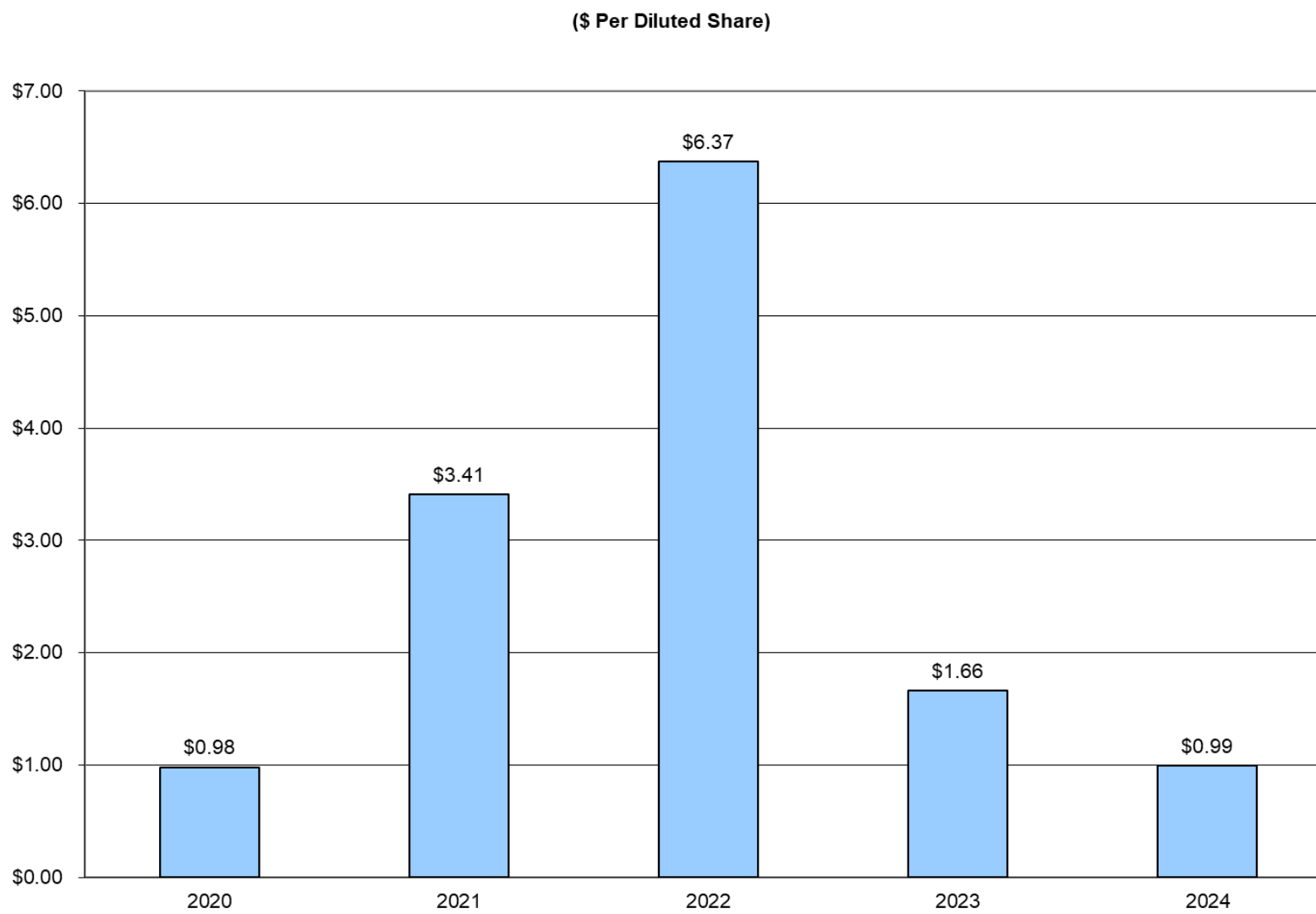


FINANCIALS – EBITDA RECONCILIATION

- Earnings before interest, taxes, depreciation and amortization (“EBITDA”) calculated as earnings from continuing operations before interest expense and income, other income, depreciation and amortization, stock-based compensation expense and income taxes, and excludes inventory write-downs, restructuring charges, acquisition costs, bargain purchase gain, gain on early extinguishment of debt, legal settlement and pension plan settlement loss.
- EBITDA (i) should not be considered as an alternative to net earnings (determined in accordance with GAAP) as an indicator of our financial performance, (ii) is not an alternative to cash flow from operating activities (determined in accordance with GAAP) as a measure of our liquidity, and (iii) is not indicative of funds available to fund our cash needs because of needed capital replacement or expansion, debt service obligations or other cash commitments and uncertainties.
- We have included EBITDA in the presentation because management believes that it provides investors with a supplemental measure of cash flow and the ability to assess our operating performance for the periods presented on a comparable basis excluding changes in our capital structure and effective tax rates.

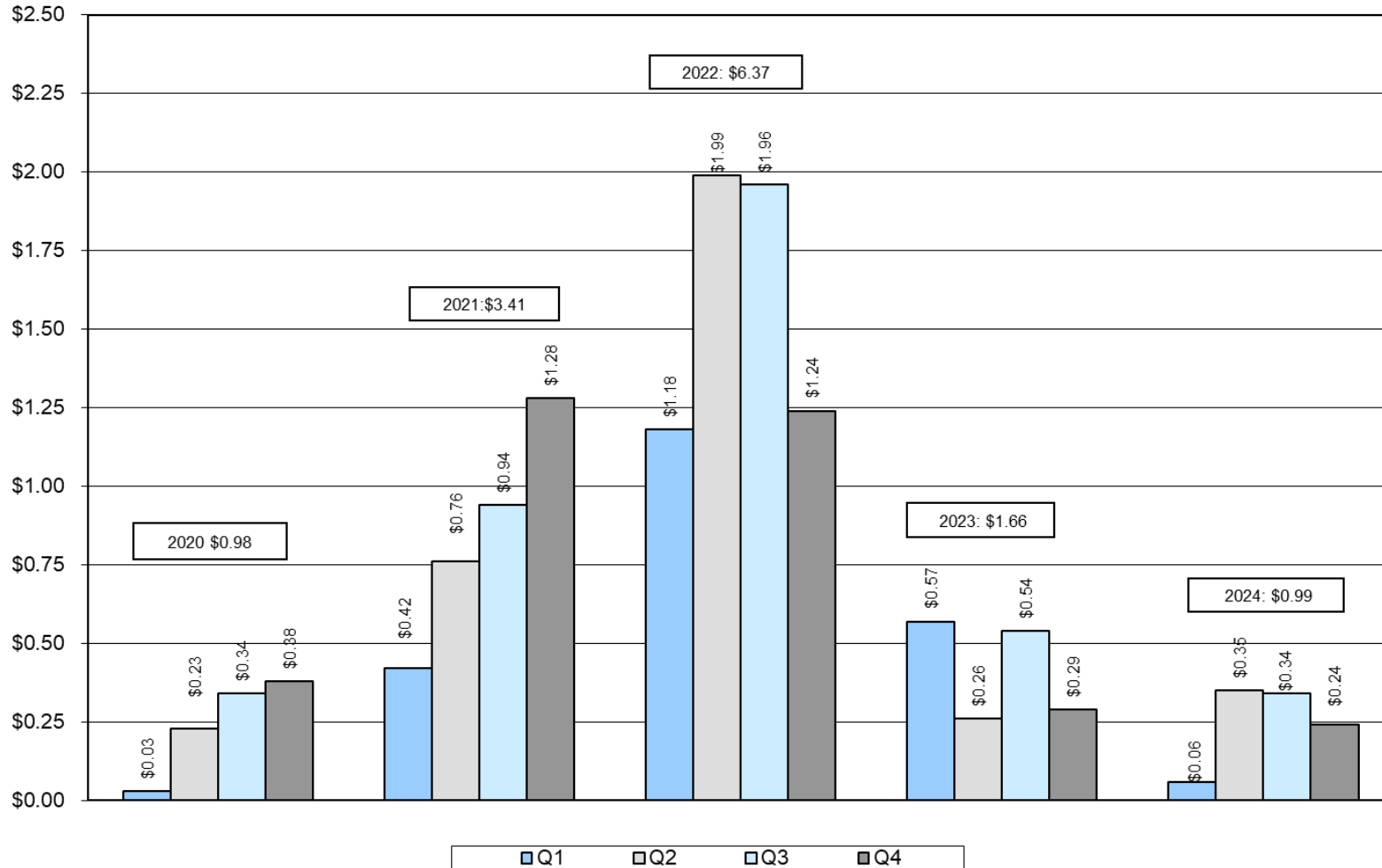
	(52 weeks) September 28, 2024	(52 weeks) September 30, 2023	(52 weeks) October 1, 2022	(52 weeks) October 2, 2021	(53 weeks) October 3, 2020
<i>(\$ in 000s)</i>					
Net Earnings	\$19,305	\$32,415	\$125,011	\$66,610	\$19,009
Interest Expense	89	87	91	96	106
Interest Income	(5,433)	(3,706)	(326)	(21)	(473)
Other Expense (Income), Net	37	(3,423)	88	114	(1,254)
Acquisition Costs	61	-	-	-	195
Restructuring Charges	-	-	(318)	2,868	1,695
Depreciation and Amortization	15,413	13,304	14,486	14,521	14,255
Stock-Based Comp Expense	3,072	2,425	2,429	1,988	2,028
Income Taxes	5,982	9,340	36,716	19,493	5,161
EBITDA	\$38,526	\$50,442	\$178,177	\$105,669	\$40,722

FINANCIALS – EARNINGS PER SHARE (ANNUAL)



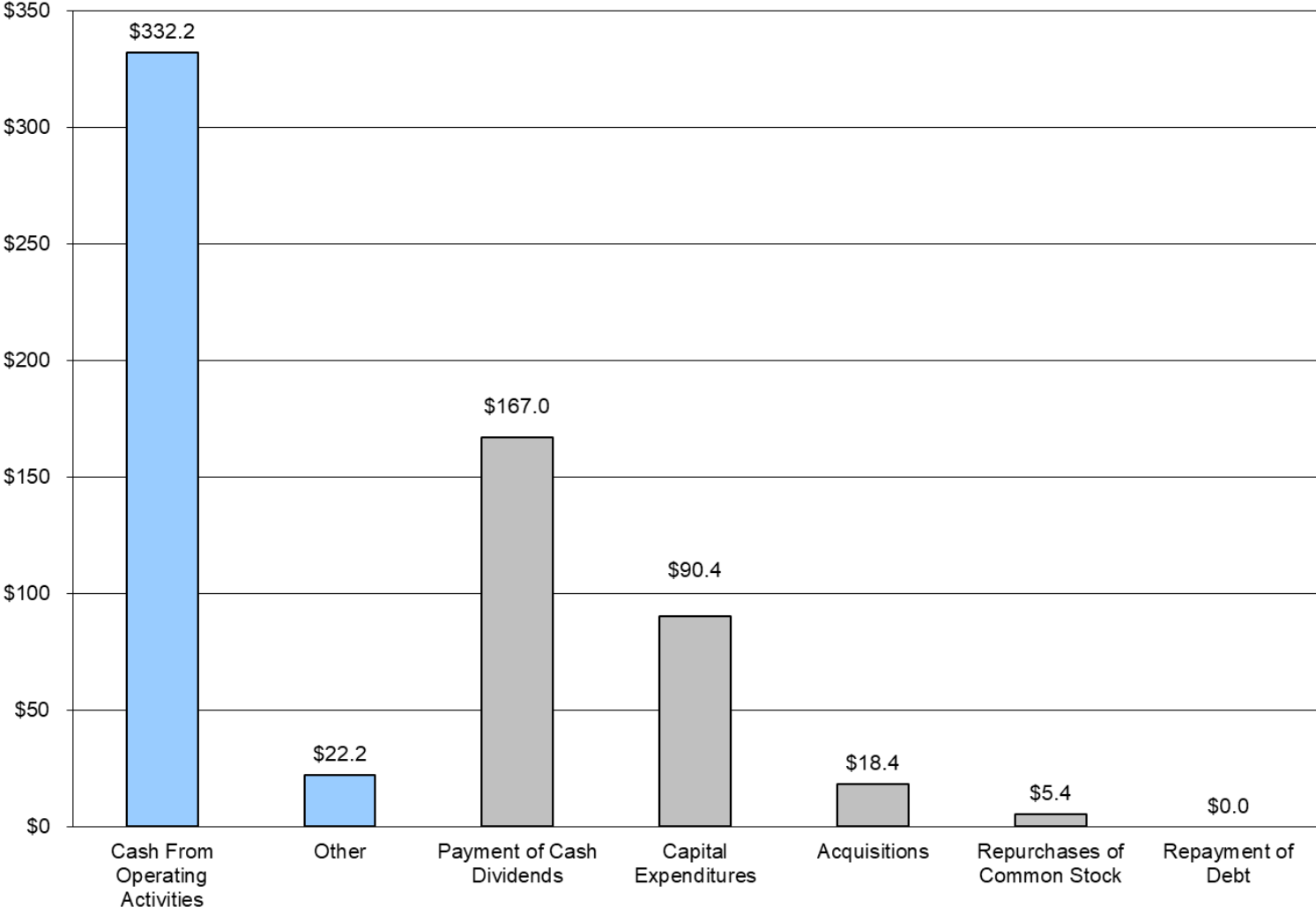
FINANCIALS – EARNINGS PER SHARE (QUARTERLY)

(\$ Per Diluted Share)

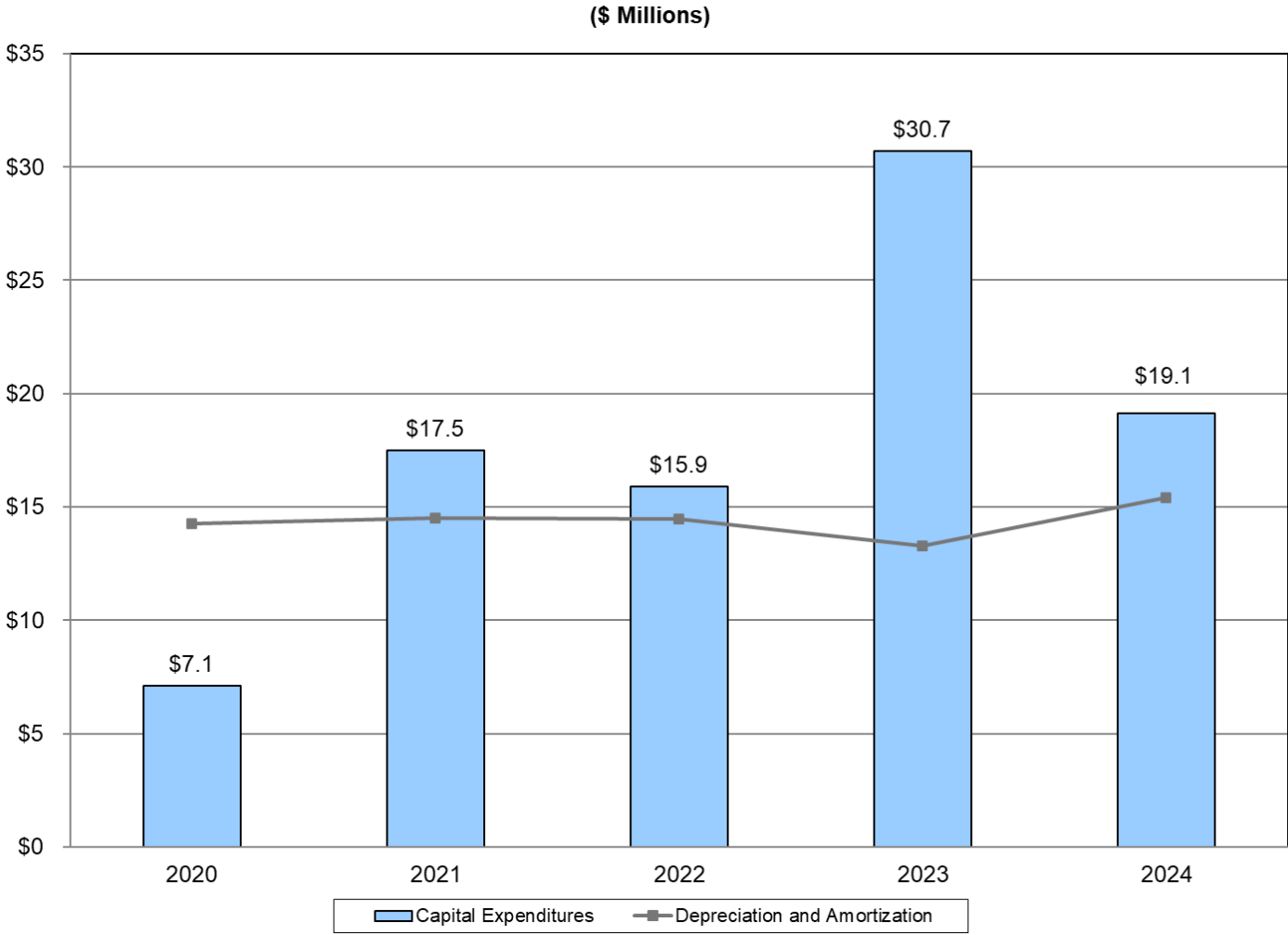


FINANCIALS – CASH FLOW

2020 – 2024
Sources (Uses) (\$ Millions)

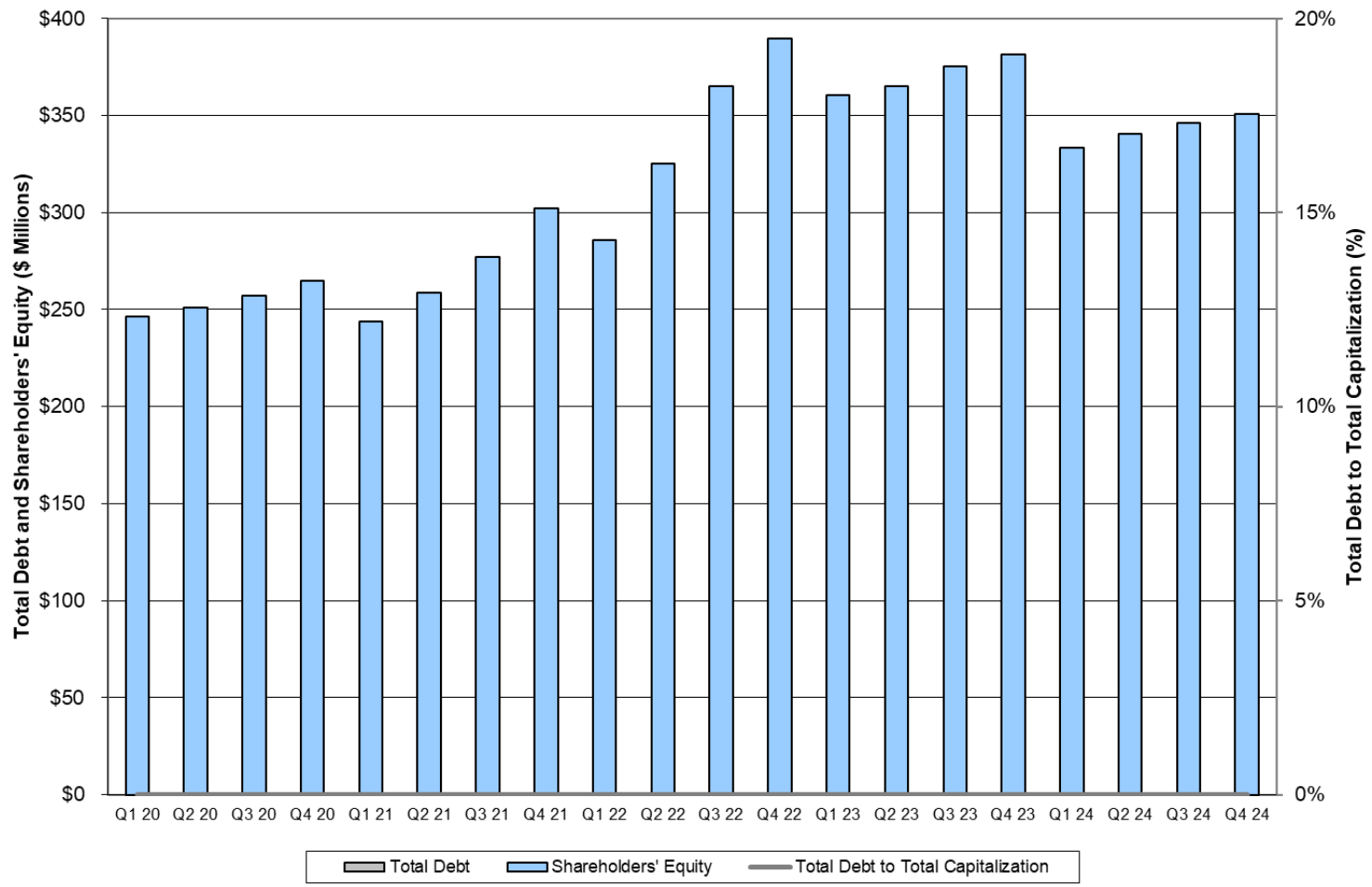


FINANCIALS – CAPITAL EXPENDITURES (ANNUAL)



- Capital expenditures expected to total up to approximately \$22.0 million in fiscal 2025, which include expenditures to support costs and productivity initiatives and to fund recurring maintenance requirements.

FINANCIALS – CAPITAL STRUCTURE



- As of September 28, 2024, we were debt-free with \$111.5 million of cash and no borrowings outstanding on our \$100.0 million revolving credit facility.

DIVIDEND AND SHARE REPURCHASE PROGRAMS

Regular Quarterly Cash Dividend

- Currently paying regular quarterly cash dividend of \$0.03 per share.

Special Cash Dividends

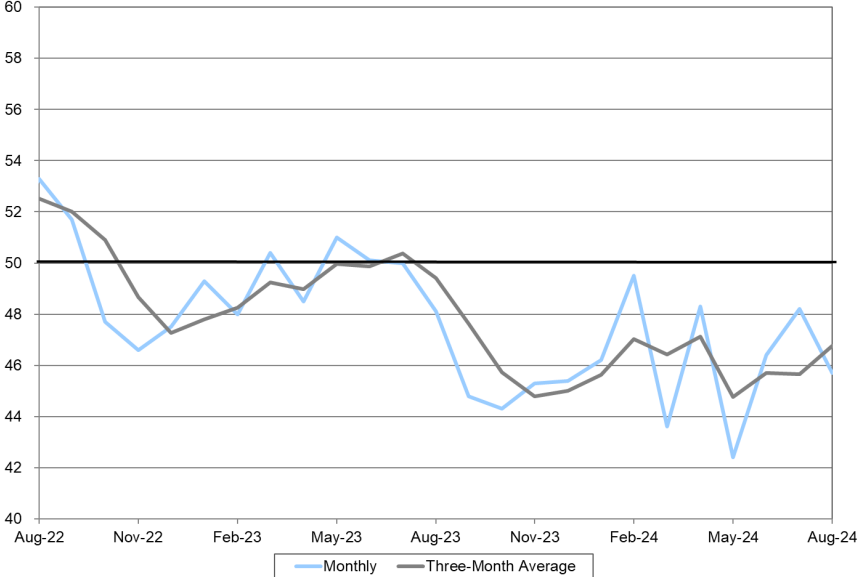
- Paid \$2.50 per share special cash dividend in December 2023, \$2.00 in December 2022 and December 2021, \$1.50 in December 2020, \$1.00 in January 2018, \$1.25 in January 2017, \$1.00 in January 2016, \$0.25 in December 2012 and \$0.50 in October 2008.

Share Repurchase Program

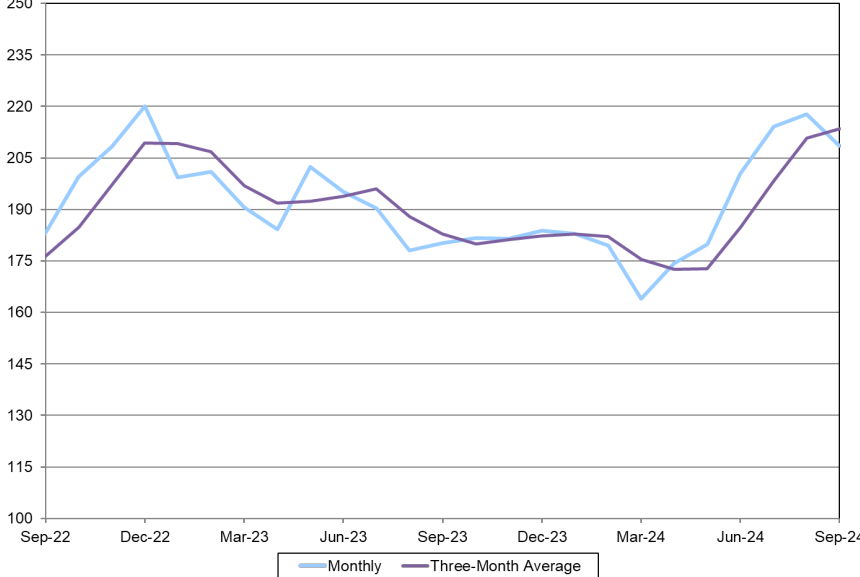
- Current \$25.0 million share repurchase program was authorized in November 2008 with \$19.8 million remaining available.
 - Repurchased \$1.8 million in FY 2024 and \$2.3 million in FY 2023.

LEADING INDICATORS – ABI AND DMI

Architectural Billings Index



Dodge Momentum Index



- Architecture Billings Index (“ABI”) and Dodge Momentum Index (“DMI”) are leading indicators for nonresidential building construction activity.
- In August, the ABI continued to remain in negative territory, with a score of 45.7. Despite the low score, there was a positive sign as firms noted an increase in inquiries for future projects.
- DMI decreased 4.2% in September to 208.6. On a year-over-year basis, the overall index was higher by 21.0%. The decline in September was driven by a drop within the commercial segment driven largely by a moderation of data center activity.

OUTLOOK

Looking ahead to fiscal 2025, we expect our financial results will be favorably impacted by improving business conditions in our construction end markets. Although recent key indicators and industry forecasts for nonresidential construction spending have been somewhat mixed, customer sentiment is generally positive, and easing inflation concerns and the downward trajectory of interest rates will likely stimulate demand going forward. Furthermore, the outlook for public nonresidential construction is also favorable, as federal spending associated with the Infrastructure Investment and Jobs Act is expected to boost infrastructure-related project activity and lay a stronger foundation for future growth. We also expect our financial performance in the coming year to benefit from the recent acquisition of Engineered Wire Products, Inc., with synergies anticipated as integration activities are completed.

Regardless of the market dynamics, we continue to focus on those factors we control: closely managing and controlling our expenses; aligning our production schedules with demand in a proactive manner as there are changes in market conditions to minimize our operating costs; pursuing further improvements in the productivity and effectiveness of all our manufacturing, selling and administrative activities; and furthering our human capital strategy. We also expect gradually increasing contributions from the substantial investments we have made in our facilities in the form of reduced operating costs and additional capacity to support future growth. Finally, we will continue to pursue acquisitions opportunistically in our existing businesses that expand our penetration of markets we currently serve or expand our footprint.

INVESTMENT CONSIDERATIONS

Strong cash flow generation and disciplined capital allocation strategy

National footprint of facilities and markets served

Financial strength and flexibility

Raw material purchasing leverage – volume and mix

Highly variable cost structure advantageous in all economic environments

Multiple avenues for growth through organic and strategic initiatives

Strong positions in attractive fragmented markets

Experienced management team

Significant growth potential of existing facilities through increased capacity utilization

Modern manufacturing facilities and a highly competitive cost structure

Diversified customer base

Lack of legacy issues – environmental, post-retirement, or defined benefit plan obligations



REINFORCING AMERICA

**SUPPORTING OUR NATION'S INFRASTRUCTURE IS
THE FOUNDATION OF EVERYTHING WE DO**