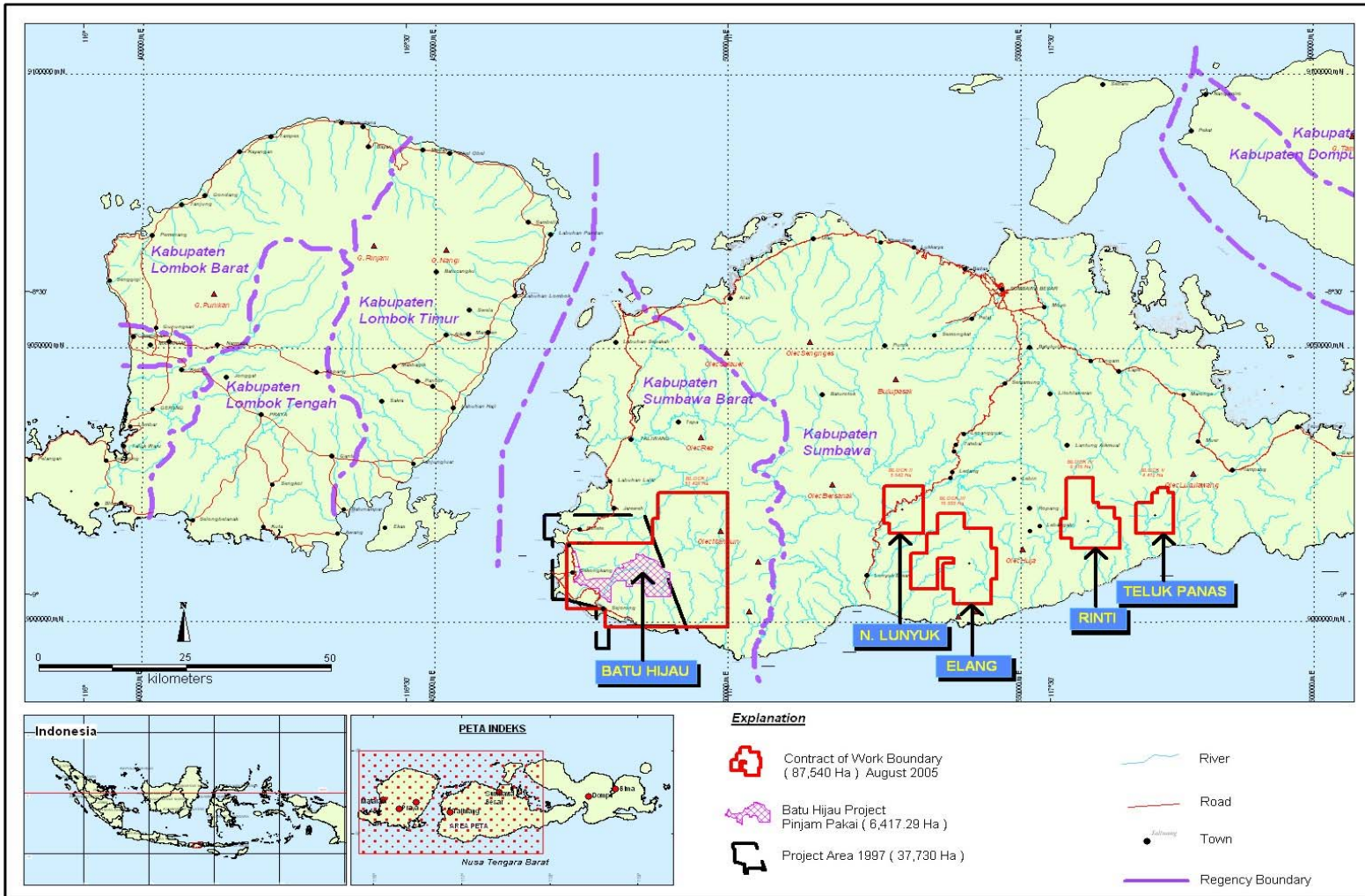




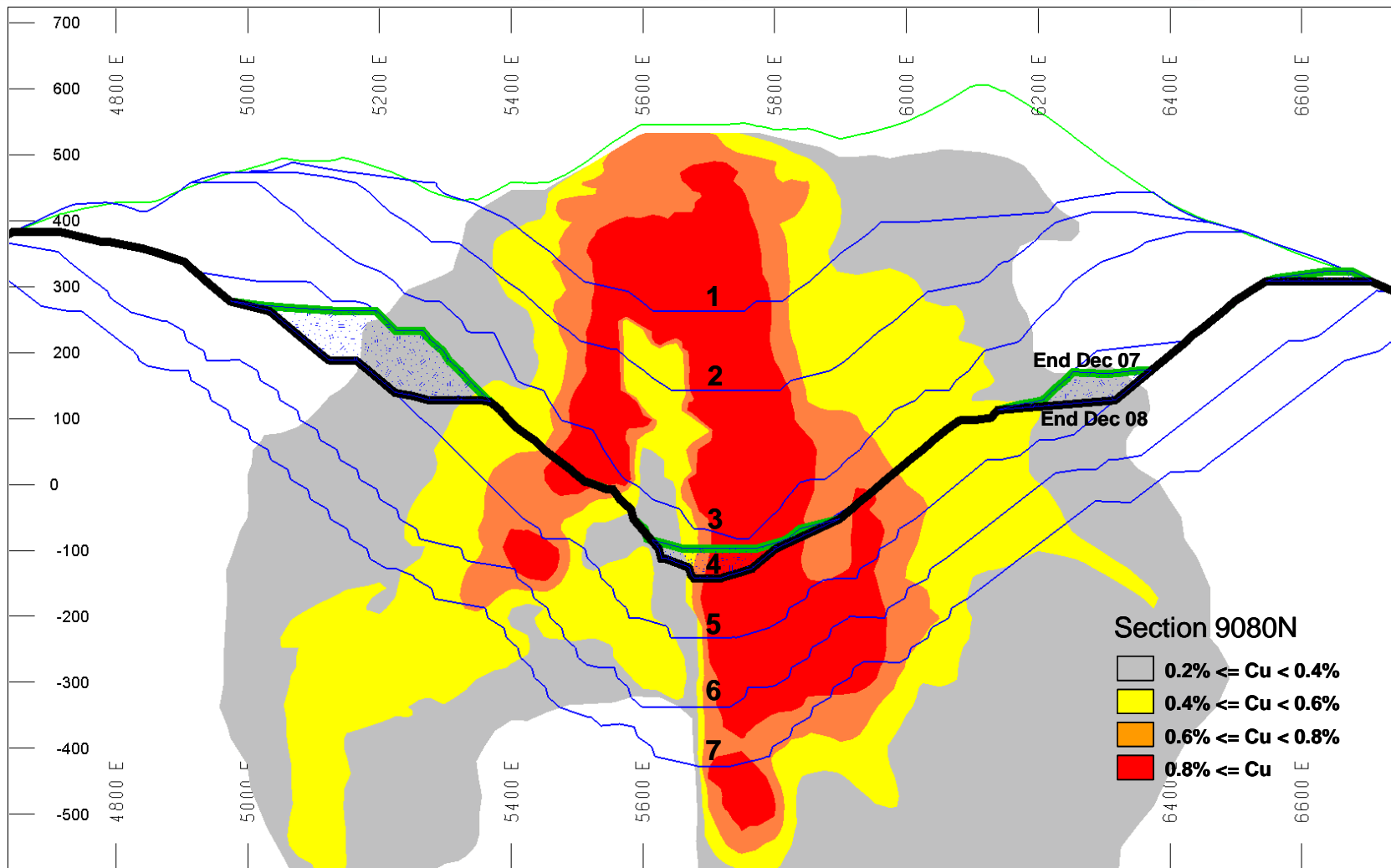
Indonesia Overview

Patrick Hickey, Group Executive Operations, Indonesia

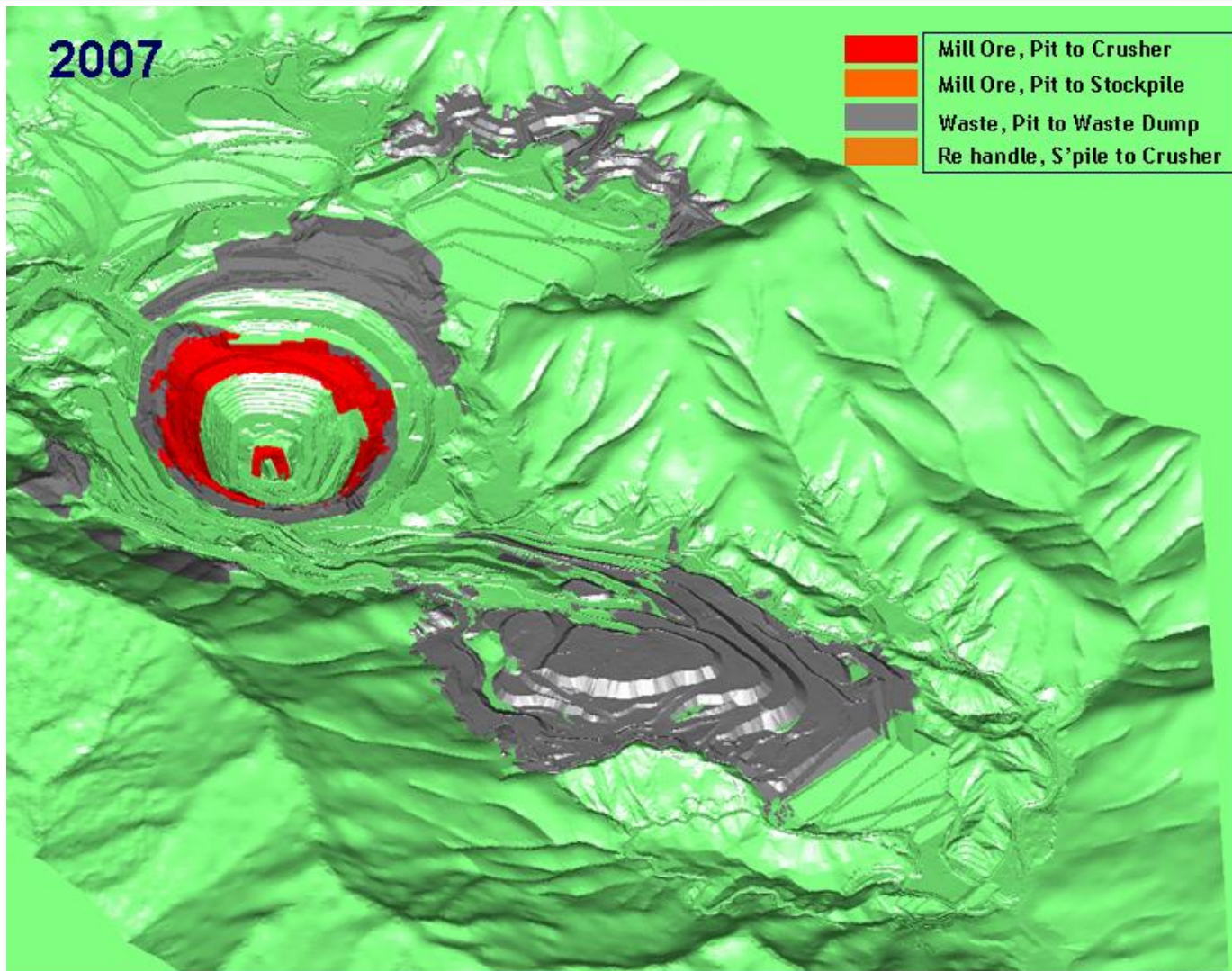
Newmont Indonesia



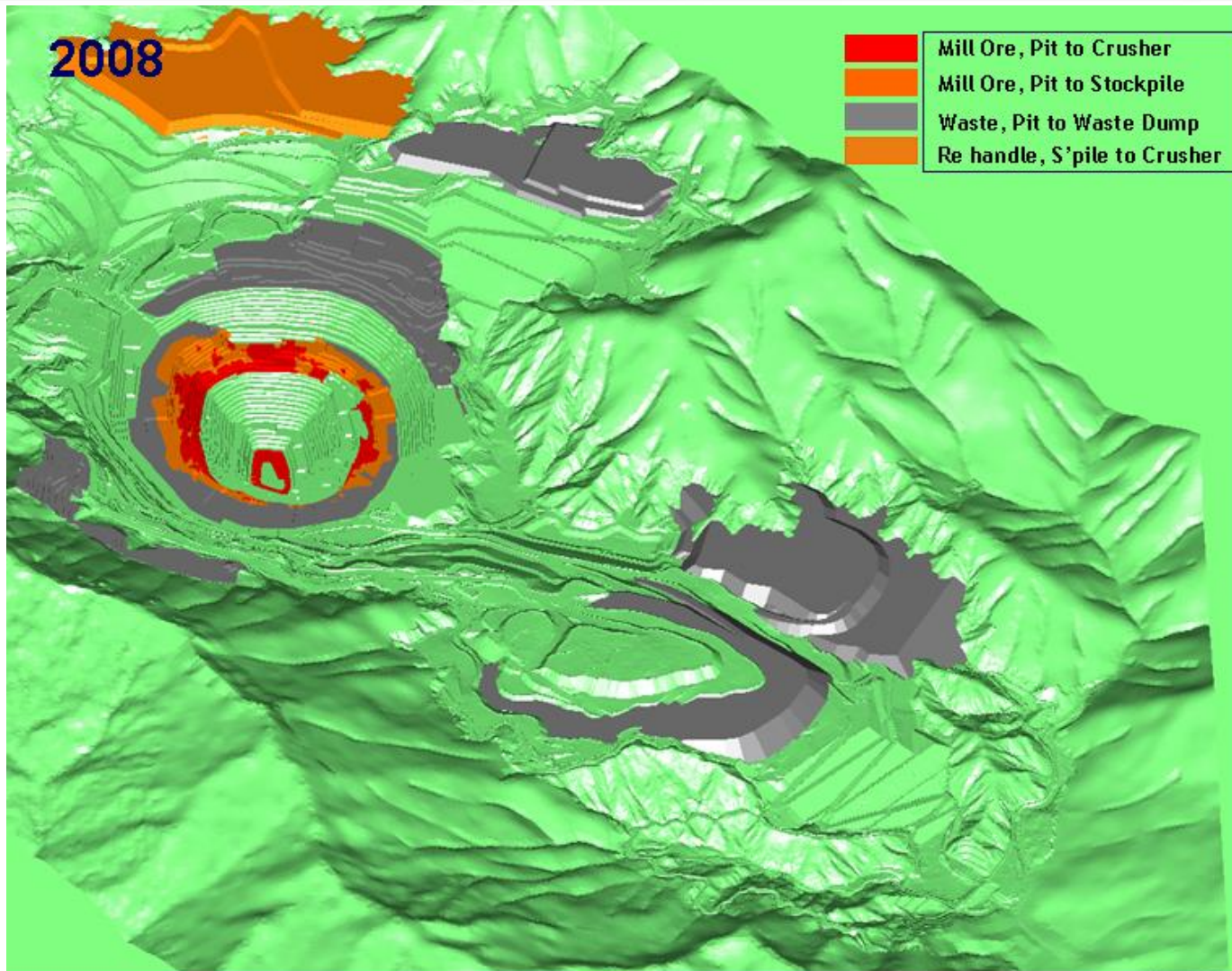
Mine Sequencing Plan - Pit Ore Grades



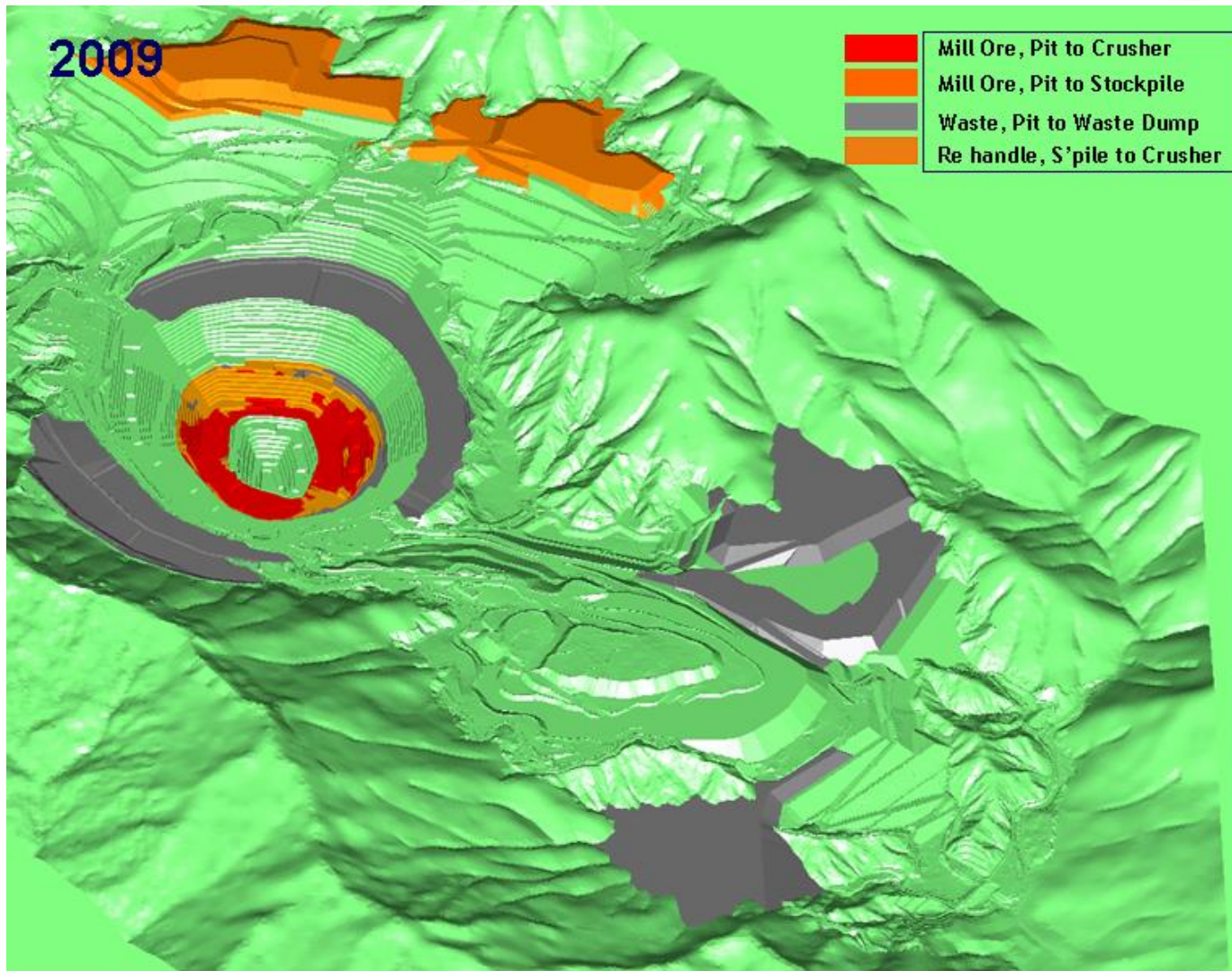
Mine Sequencing Plan - Timing of Mining Activities



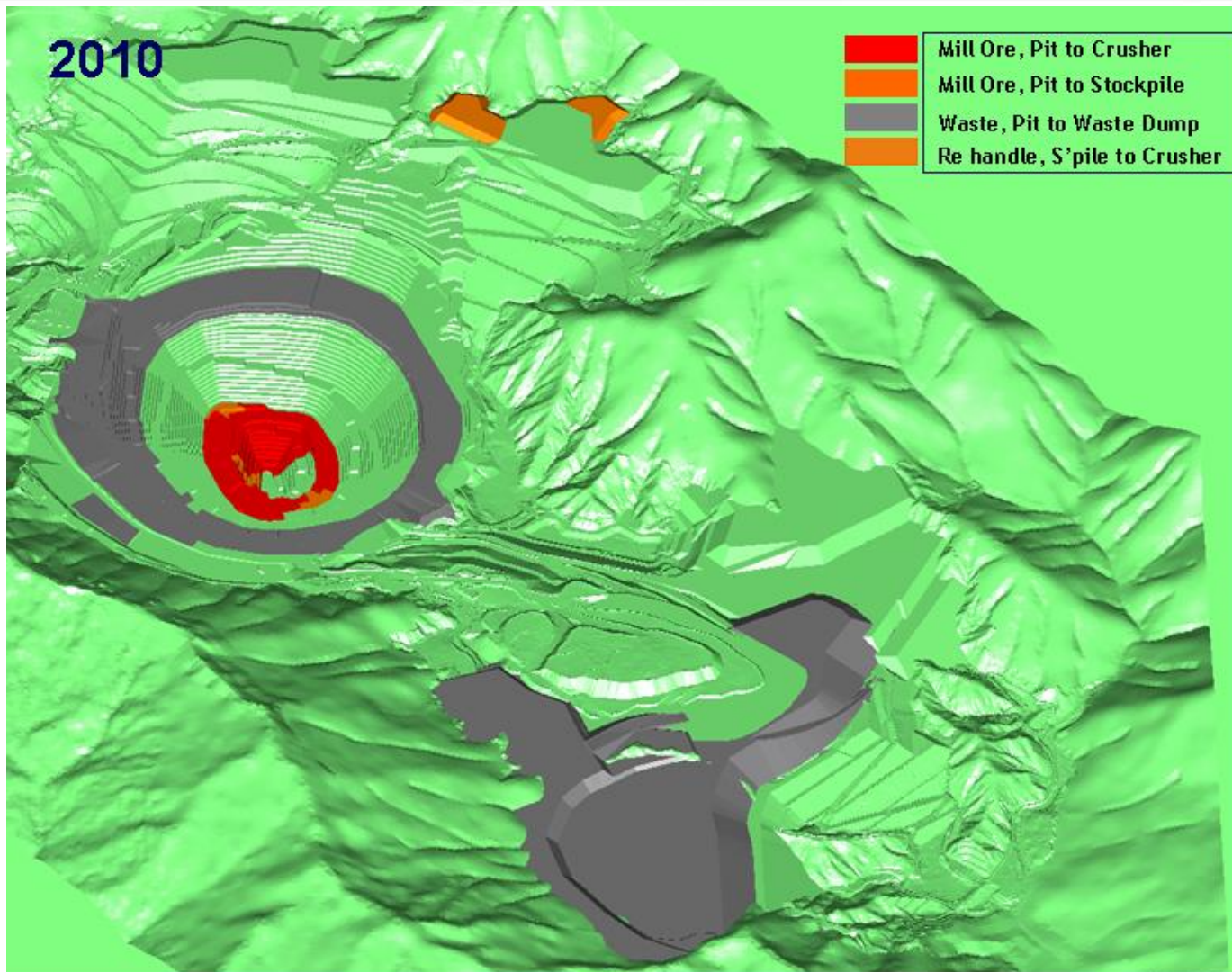
Mine Sequencing Plan - Timing of Mining Activities



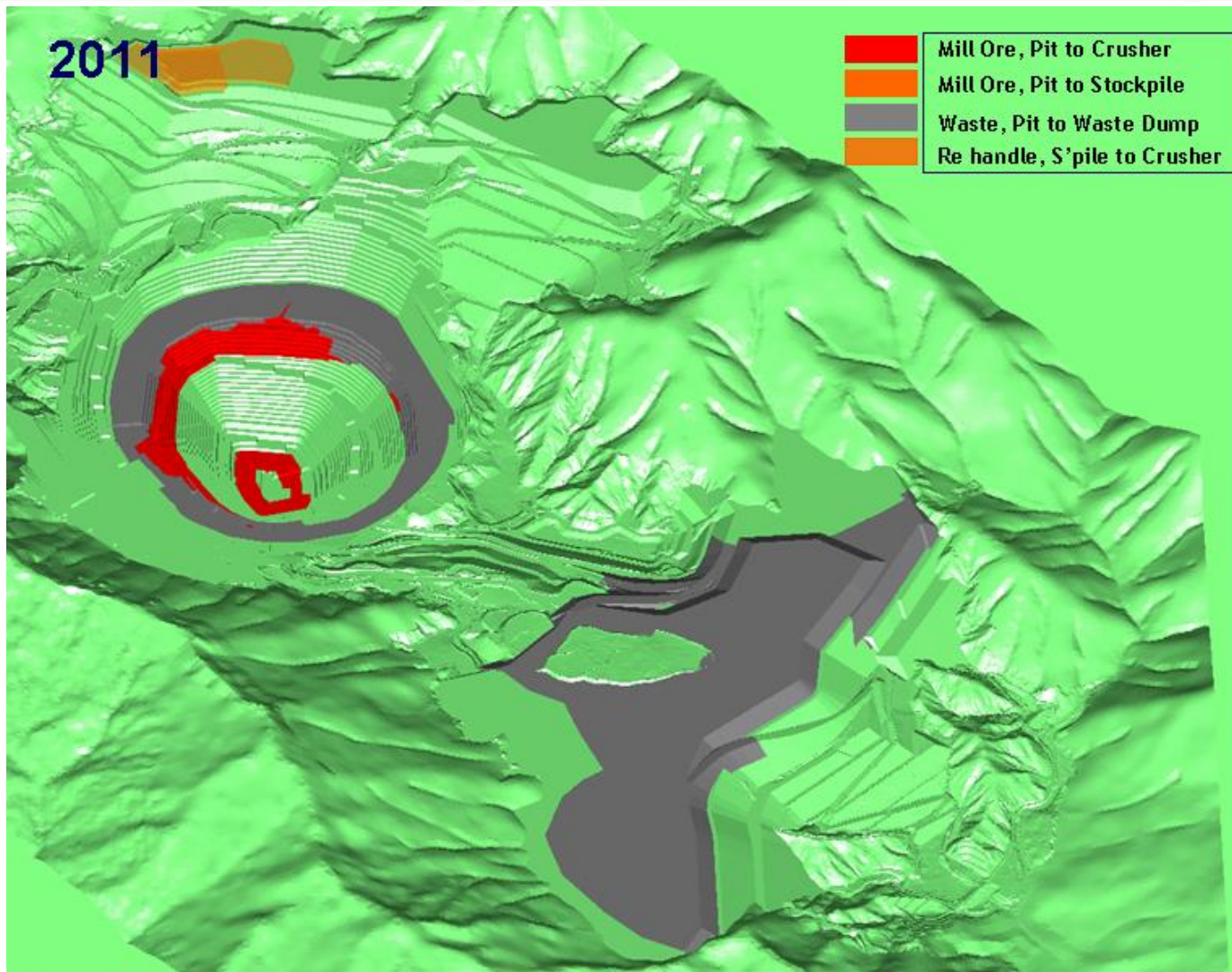
Mine Sequencing Plan - Timing of Mining Activities



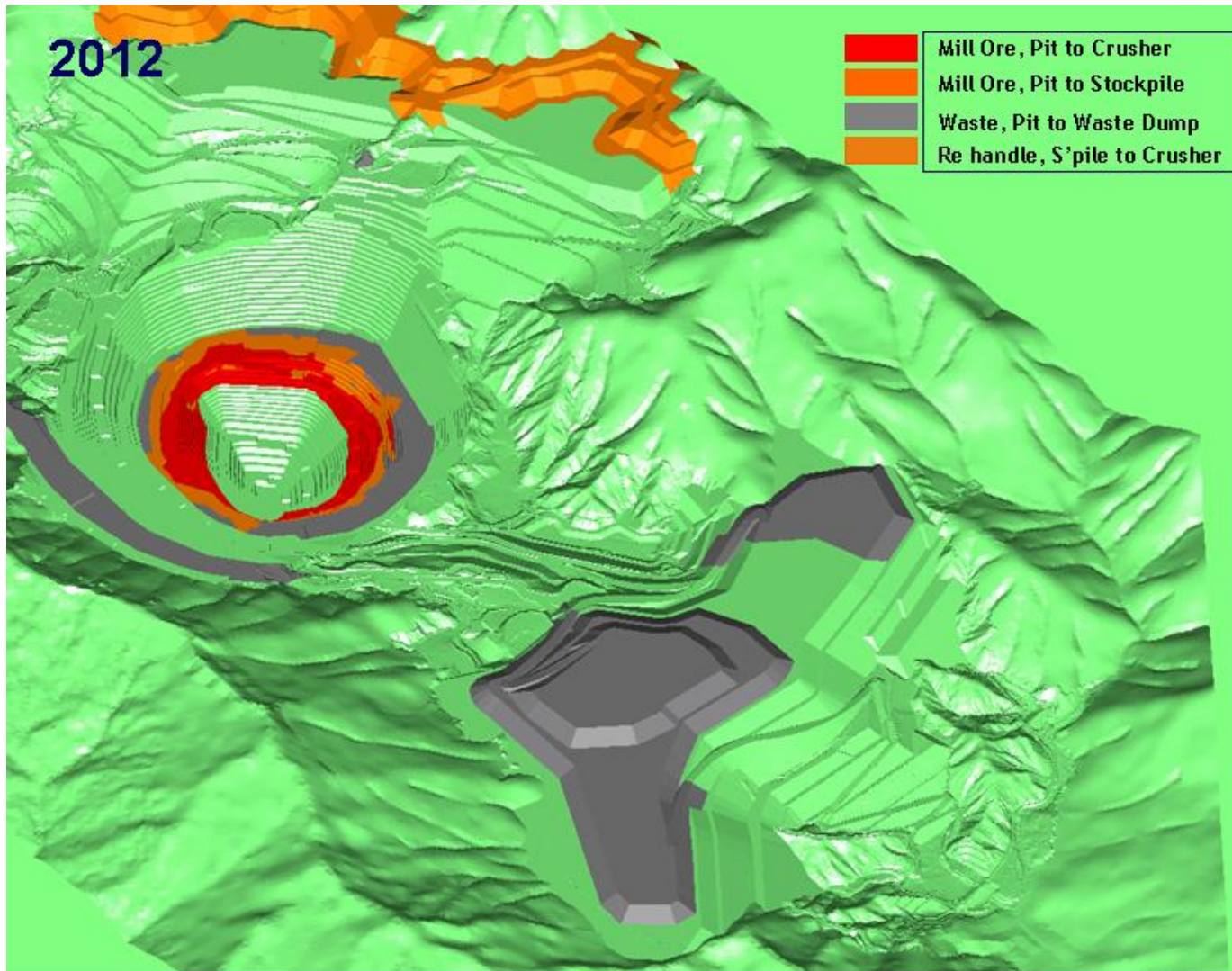
Mine Sequencing Plan - Timing of Mining Activities



Mine Sequencing Plan - Timing of Mining Activities



Mine Sequencing Plan - Timing of Mining Activities



Regional Alignment with Strategic Foundation



□ Operational Execution:

- World class ESR & safety standards
- Executing against planned mine sequence
- Continuous Improvement and sharing of best practices

□ Project Execution:

- Ongoing evaluation of 3rd SAG mill and Pit Water Shaft

□ Leverage, Scope and Scale:

- Development of strong Indonesian talent pool
- Inexpensive coal fired power (\$0.048/kwh)
- No copper hedge commitments

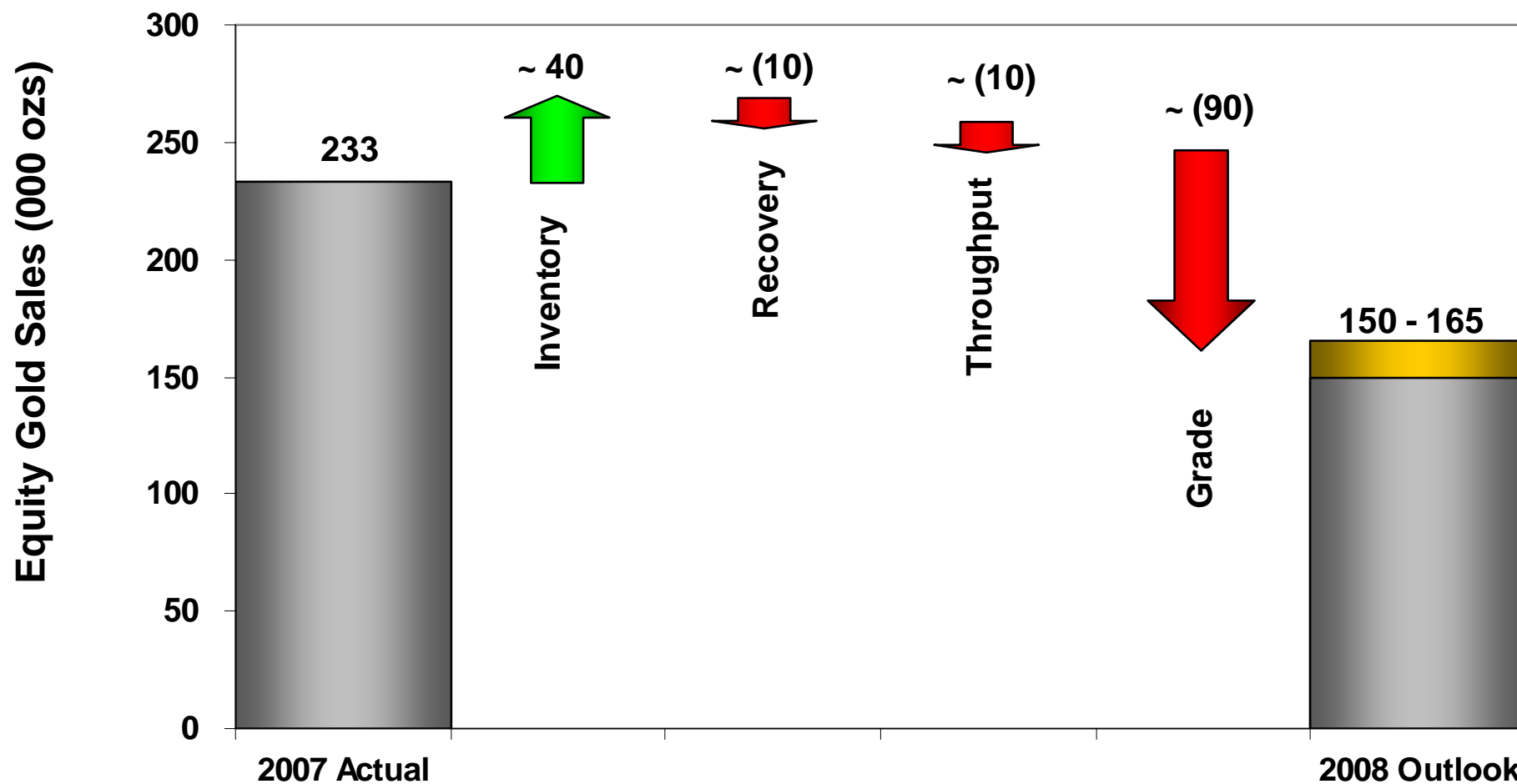
2008 Outlook Summary



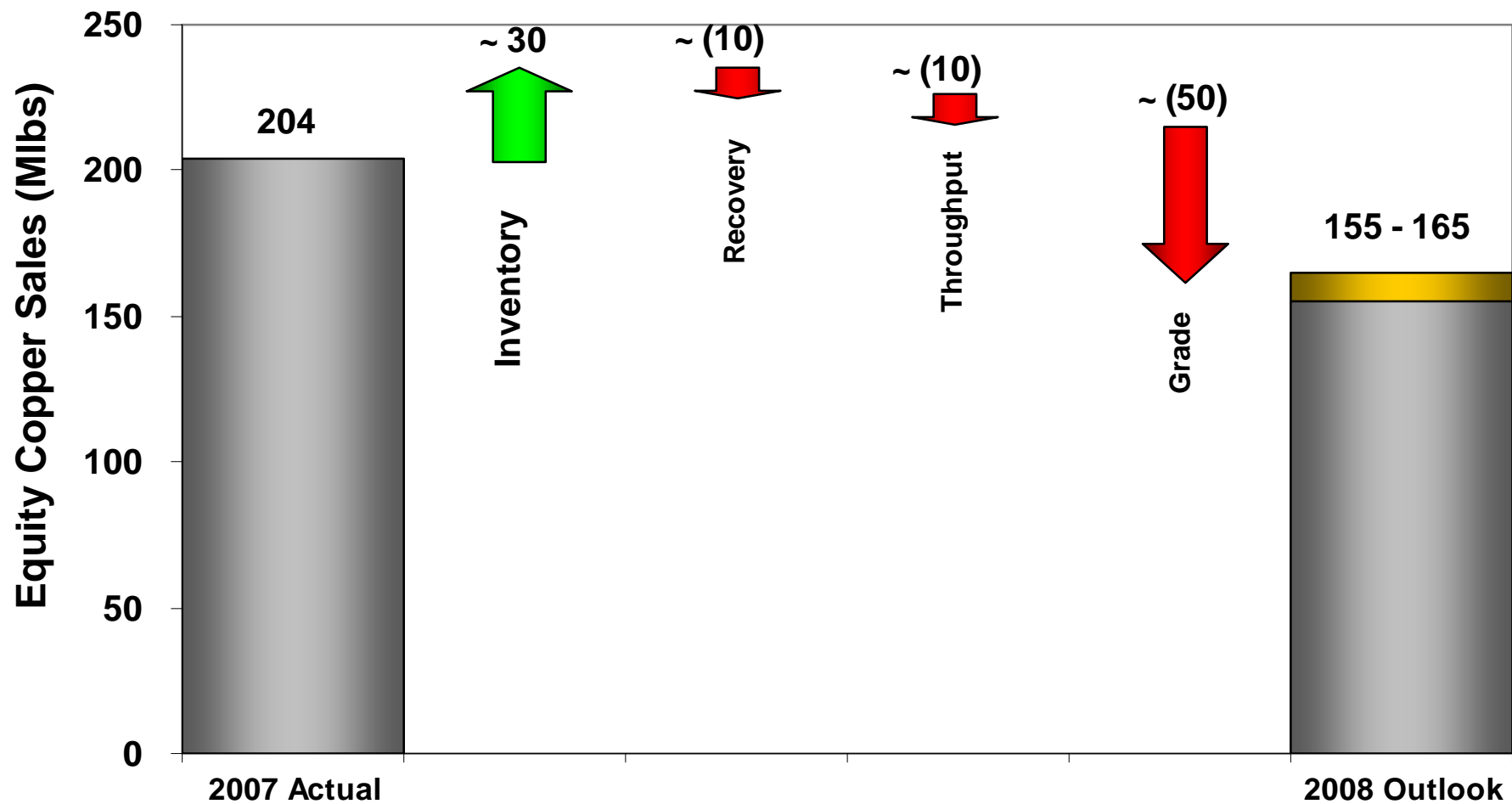
	Q4 2007	YTD 2007	Outlook 2008
Equity gold sales (000 ozs)	54	233	150 - 165
Costs applicable to sales – Gold (\$/oz)	\$354	\$243	\$285 - \$305
Equity copper sales (Mlbs)	34	204	155 - 165
Costs applicable to sales – Copper (\$/lb)	\$1.29	\$1.10	\$1.30 - \$1.40
Consolidated capital expenditures (\$m)	\$31	\$74	\$145 - \$195

- ❑ Lower Production as a Result of Mine Sequencing
- ❑ Equity Production Subject to Divestiture Results

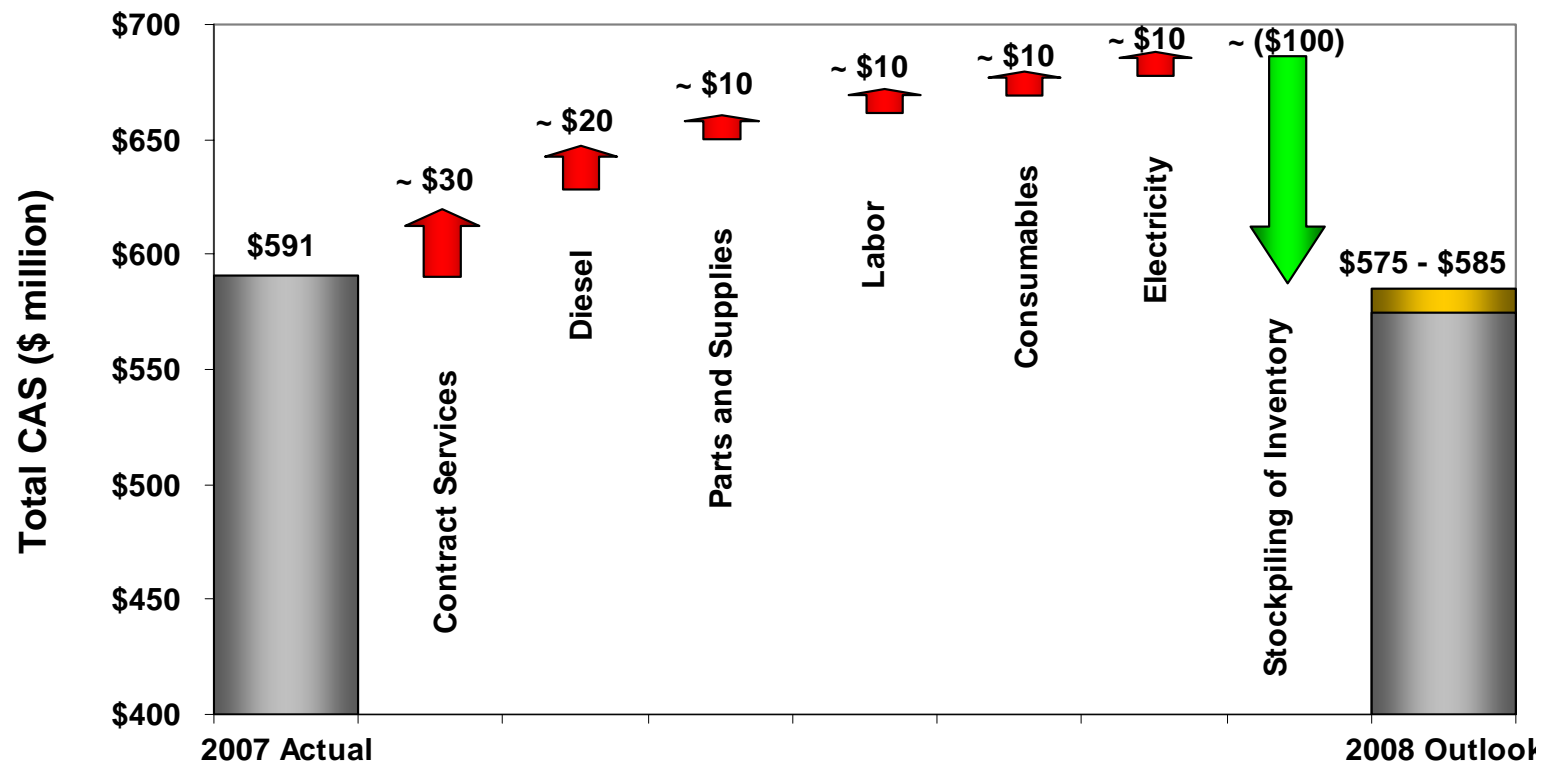
2008 Equity Gold Sales



2008 Equity Copper Sales



2008 Total Costs Applicable to Sales



- Stockpiling of Inventory – Primarily related to build in stockpile inventories in 2008 from lower grade Phase 5 ore compared to net utilization of high grade stockpiles during 2007.
- 2008 Outlook range based on production and per unit CAS outlook

Beyond 2008



□ Consistent Operating Performance:

- Investments in protecting mill assets (corrosion control)
- First class ground control management plans
- Scope for expansion at Elang

□ Reducing operating cost per unit:

- Opportunity to optimize production through 3rd SAG Mill
- Opportunity to reduce costs with Pit Water Shaft
- Regional synergies with Australia/New Zealand

□ Continued focus on Safety & ESR performance:

- Occupational Health and Safety Assessment Series by Q4 2008 (OHSAS:18001)
- International environmental standard Q4 2008 (ISO 14001)



Questions & Answers