

Population pharmacokinetics of ADG20, an extended-half-life monoclonal antibody being developed for the treatment and prevention of COVID-19

Christopher M. Rubino,¹ Paul G. Ambrose,^{1,2} Lynn E. Connolly,² Xia Pu²

¹Institute for Clinical Pharmacodynamics, Schenectady, NY, USA

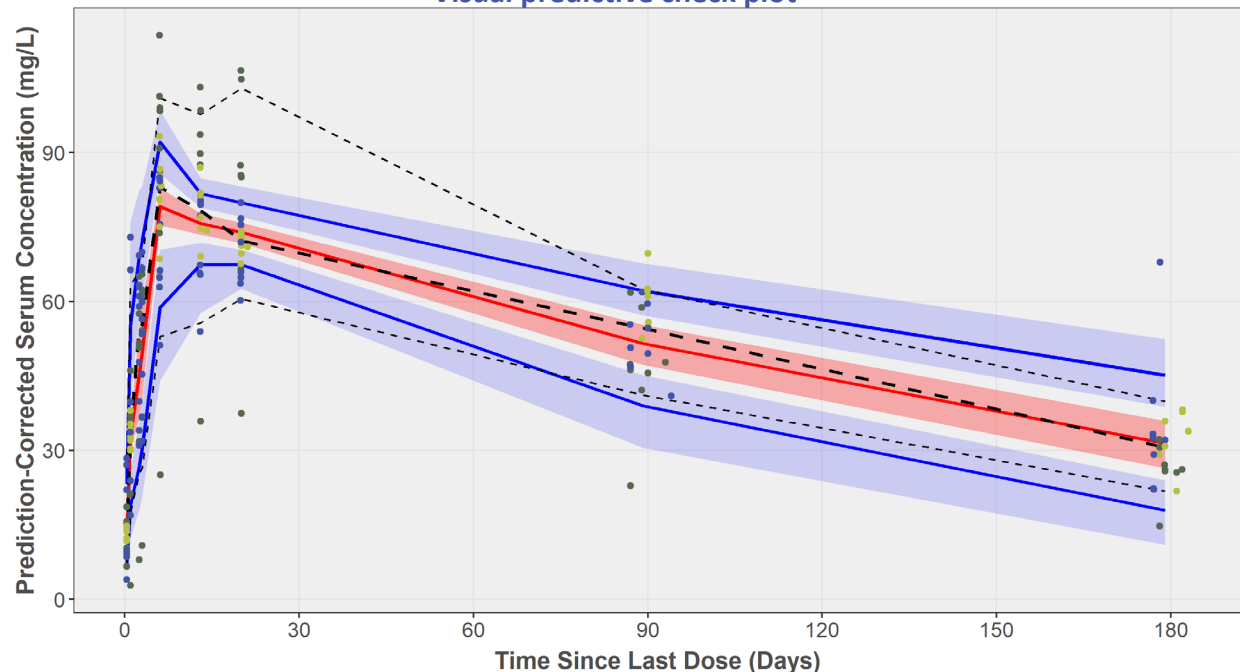
²Adagio Therapeutics, Inc., Waltham, MA, USA

Transparency declarations: Christopher M. Rubino received funding from Adagio Therapeutics, Inc., for the conduct of this work. Paul G. Ambrose, Lynn E. Connolly, and Xia Pu are employees of Adagio Therapeutics, Inc., and may own stocks or shares. Writing support was provided by Russell Craddock, PhD, of Parexel International, Inc., Uxbridge, UK. This study was funded by Adagio Therapeutics Inc.



Population PK model provides a robust fit to observed ADG20 prediction-corrected observed concentrations in healthy adults in a phase 1 study¹

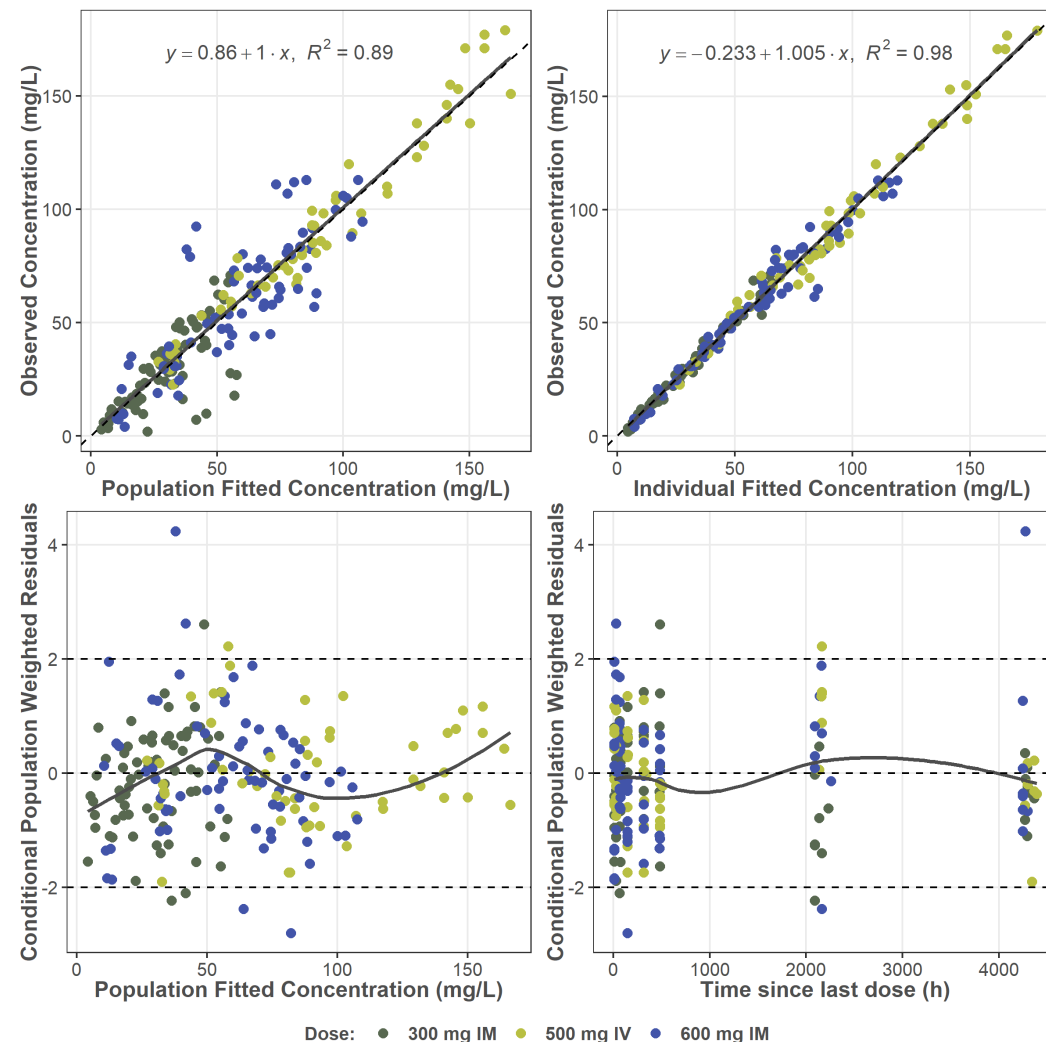
Visual predictive check plot



Dose: • 300 mg IM • 500 mg IV • 600 mg IM

- ● Circles represent the prediction-corrected observed ADG20 concentrations
- Long dashed and short dashed black lines represent the **median and 5th/95th percentiles of the prediction-corrected observed data**, respectively
- Red line and shaded region represent the **median and 90% prediction interval for the median simulated prediction-corrected concentrations**
- Blue lines and shaded regions represent the **medians and 90% prediction interval for the 5th and 95th percentiles of the prediction-corrected simulated data**

Goodness-of-fit plot



IM, intramuscular; IV, intravenous; PK, pharmacokinetic.

1. Paguntalan H, et al. Presented at IDWeek; September 29–October 3, 2021; Virtual. Poster 633.

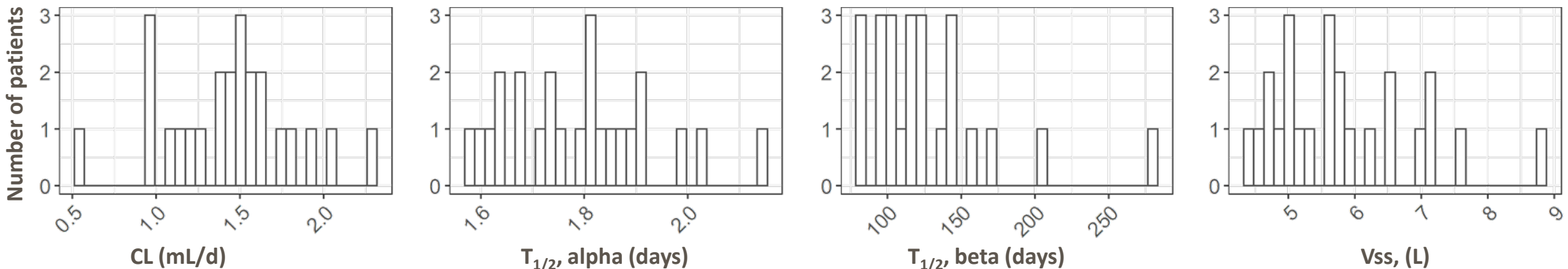


Population PK model results are consistent with the intended PK characteristics of ADG20: prolonged half-life

- The median population prediction of elimination half-life was 123 days

Parameter, median (range)	ADG20 300 mg IM (n=8)	ADG20 500 mg IV (n=8)	ADG20 600 mg IM (n=8)
AUC _{0-6 months} , g*h/L	123 (79.6–133)	249 (205–309)	247 (202–375)
C _{max} , mg/L	44.8 (30.8–56.4)	158 (118–187)	85.5 (66.5–131)
CL, mL/d	1.69 (1.49–2.28)	1.24 (0.954–1.59)	1.39 (0.530–1.95)
Vss, L	5.46 (4.48–8.88)	5.35 (4.71–7.11)	5.97 (4.72–7.55)
T _{1/2, alpha} , days	1.84 (1.64–2.14)	1.75 (1.65–1.90)	1.81 (1.58–1.99)
T _{1/2, beta} , days	99.4 (79.3–114)	130 (96.9–173)	134 (97.9–277)

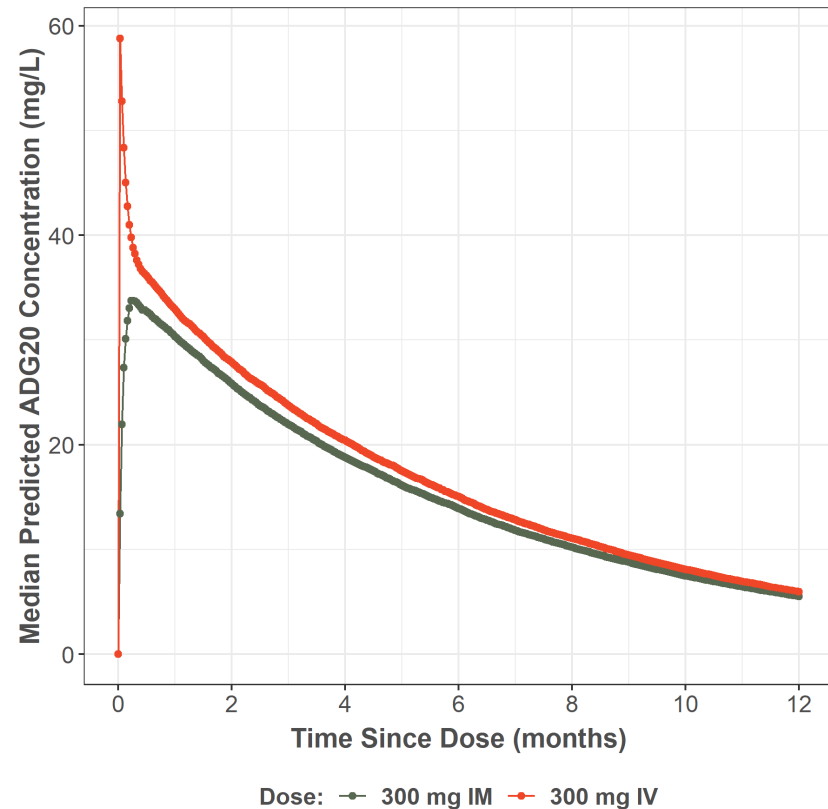
Key ADG20 PK parameter distributions across all doses



AUC, area under the curve; CL, clearance; C_{max}, maximum serum concentration; T_{1/2}, half-life; Vss, steady state volume of distribution.



Population PK model results are consistent with the intended PK characteristics of ADG20: high IM bioavailability and absorption



- Plot shows the population mean predicted concentrations over time with IV and IM administration
- At a dose of 300 mg, ADG20 has robust IM bioavailability (92.2%)
- Absorption from the IM depot results in lower peak concentrations than the IV depot, but profiles are similar after ~two months

CONCLUSIONS

- A 2-compartment population pharmacokinetic model with linear elimination and first-order IM absorption provided a precise and unbiased fit to the observed ADG20 concentration-time data
- The results are consistent with the intended pharmacokinetic characteristics of ADG20 (ie, prolonged half-life and high IM bioavailability)
- This population pharmacokinetic model will be useful for future pharmacokinetic-pharmacodynamic analyses and simulations conducted to support phase 2/3 dose selection
- Analyses of clinical data for the prevention (EVADE)¹ and treatment (STAMP)² of COVID-19 to assess the preliminary safety and efficacy of ADG20 are ongoing