

# Forward Looking Statements

Certain information set forth in this presentation contains “forward-looking information”, including “future-oriented financial information” and “financial outlook”, under applicable securities laws (collectively referred to herein as forward-looking statements). Except for statements of historical fact, the information contained herein constitutes forward-looking statements and includes, but is not limited to, the (i) projected financial performance of the Company; (ii) completion of, and the use of proceeds from, the sale of the shares being offered hereunder; (iii) the expected development of the Company’s business, projects, and joint ventures; (iv) execution of the Company’s vision and growth strategy, including with respect to future M&A activity and global growth; (v) sources and availability of third-party financing for the Company’s projects; (vi) completion of the Company’s projects that are currently underway, in development or otherwise under consideration; (vi) renewal of the Company’s current customer, supplier and other material agreements; and (vii) future liquidity, working capital, and capital requirements. Forward-looking statements are provided to allow potential investors the opportunity to understand management’s beliefs and opinions in respect of the future so that they may use such beliefs and opinions as one factor in evaluating an investment. These statements are not guarantees of future performance and undue reliance should not be placed on them. Such forward-looking statements necessarily involve known and unknown risks and uncertainties, which may cause actual performance and financial results in future periods to differ materially from any projections of future performance or result expressed or implied by such forward-looking statements. Although forward-looking statements contained in this presentation are based upon what management of the Company believes are reasonable assumptions, there can be no assurance that forward looking statements will prove to be accurate, as actual results and future events could differ materially from those anticipated in such statements. The Company undertakes no obligation to update forward-looking statements if circumstances or management’s estimates or opinions should change except as required by applicable securities laws. The reader is cautioned not to place undue reliance on forward-looking statements

# *nDatalyze Corp.*

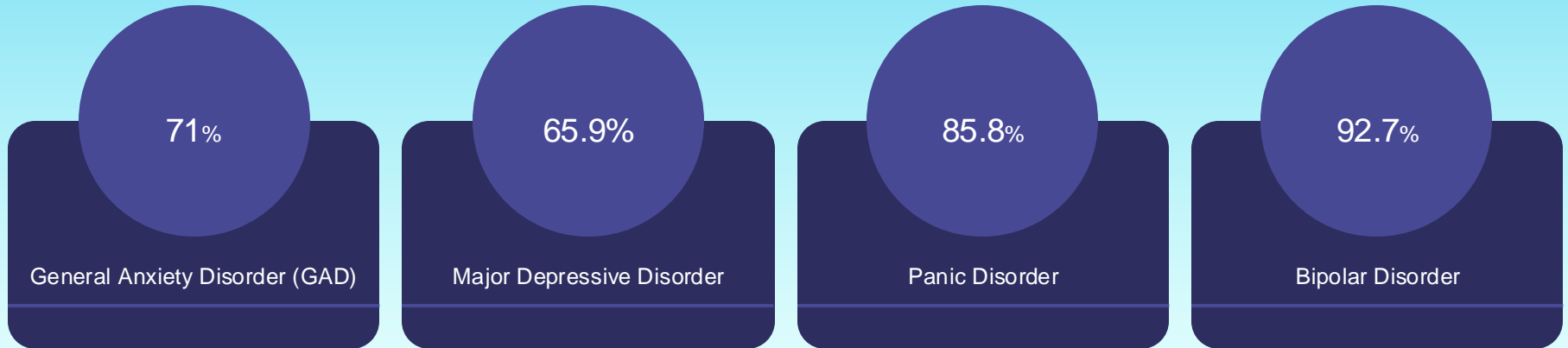
**Advanced, AI/machine-learning-based,  
Mental Condition assessments.**

CSE:NDAT OTCQB:NDATF

December 6, 2024

# The Problem

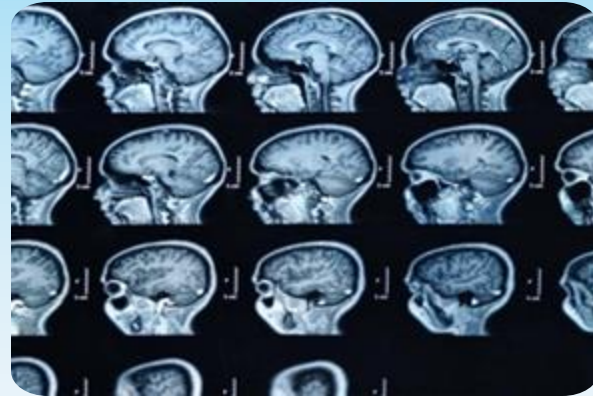
Under-informed, subjective mental condition misdiagnosis can result in misprescription leading to poor patient outcomes with the resultant feedback loop clogging the mental health system and lowering the overall quality of societal mental health. Here are example mis/overdiagnosis rates\*:



\* <https://www.ncbi.nlm.nih.gov/pmc/articles/PMC3184591/#:~:text=Misdiagnosis%20rates%20reached%2065.9%25%20for,97.8%25%20for%20social%20anxiety%20disorder>

# The Solution

**CMCP-5** is an advanced, machine-learning/evidence-based mental condition assessment that simultaneously quantifies a person's predisposition and probabilities toward Depression, Anxiety, PTSD, OCD and Alcoholism. **CMCP-5's** overarching objective is to produce better patient outcomes by helping improve diagnostic and prescription accuracy\*.



\* Johns Hopkins - <https://publichealth.jhu.edu/2013/mojtabai-depression-over-diagnosis-and-over-treatment#:~:text=Americans%20are%20over%2Ddiagnosed%20and,within%20a%2012%2Dmonth%20period>, and

National Library of Medicine - <https://pmc.ncbi.nlm.nih.gov/articles/PMC3184591/>

## Features & Benefits

- **uses *objective data*** – not based on subjective, error-prone patient self-reports;
- **low-bias** – assessments are guided by multiple psychiatric expert opinions rather than being based on a single opinion;
- **highly-informed** – involves extensive, objective, biometric variables including DNA expressions, childhood experiences, parenting styles, illnesses, traumas, diet, allergies, life events, lifestyle choices and more;
- **calibration/corroborated by EEG and DNA data** means CMCP-5 assessments do not require patient EEG or DNA data;
- **deep analysis and third-party validation** – machine-learning correlation and algorithmic corroboration validated by Clinical Study results.

# CMCP-5 combines:

with...

to predict...

01

## “Memories”

A proprietary Reference Database of:

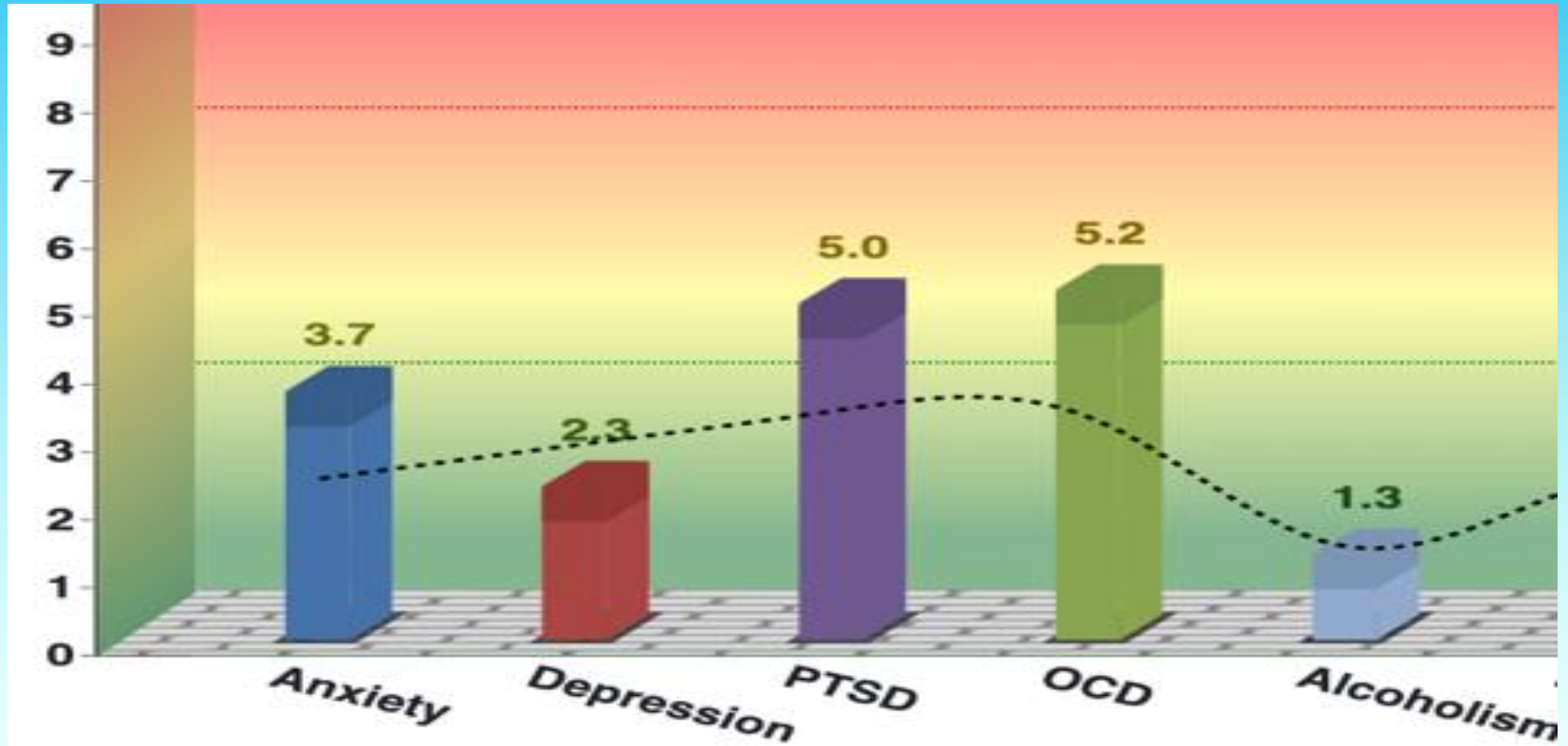
- Genetic expressions
- Brain wave (“EEG”) and DNA Snps/alleles correlations
- Childhood development/Parenting styles
- Traumas & Allergies
- Diagnosed mental conditions
- Physical conditions
- Lifestyle choices and life experiences

02

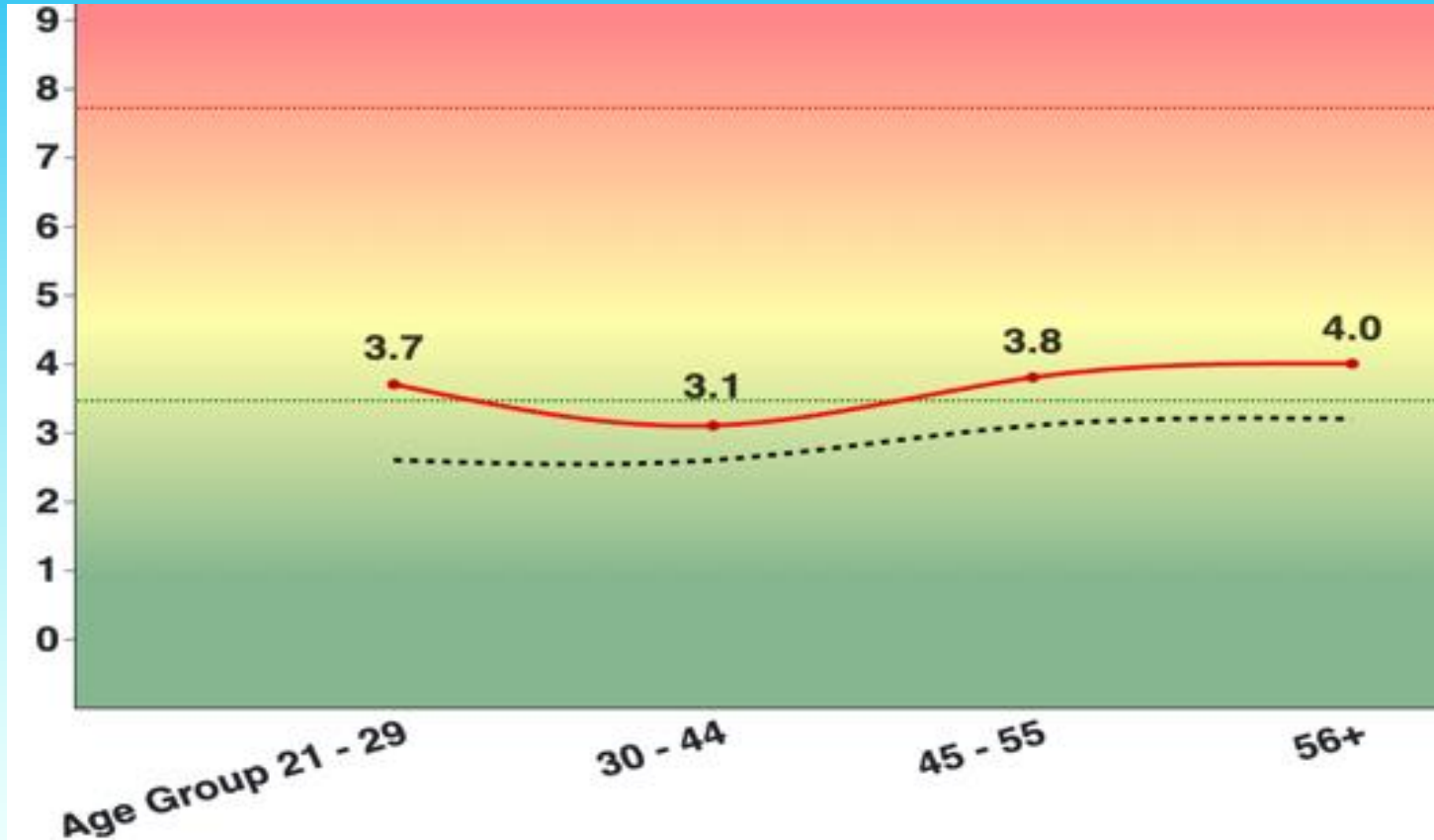
## an advanced, predictive mental condition assessment system

**Guided AI/machine-learning** by multiple highly-qualified Psychotherapists/data scientists and supported by supervised ML algorithms and Clinical Study comparisons. Objective, evidence-based data is used to simultaneously predict an individual’s current and future probabilities of multiple mental health conditions.

## Current Mental Condition Probabilities...



**...and predicted trajectories over time.**





## Expert Guidance

**DR. KEITH COURTNEY**



Chief Psychiatric Officer

Keith is a double board-certified psychiatrist and a Clinical Assistant Professor at the University of Calgary and was a faculty member at the University of Vermont, Dartmouth Medical School, and the University of Nevada.

**DR. CAROL MALEC**



Ph.D, MSc, BScN

Carol has 22 years of private practice counselling experience and is a Certified Counsellor with Canadian Counselling and Psychotherapy Association (CCPA). She's also a guest lecturer at the University of Calgary.

**DR. ANDREA PROTZNER**



PhD, EEG Specialist

Andrea is an EEG specialist, a member of the Hotchkiss Brain Institute, and an Associate Professor at the University of Calgary. As the head of the University's Brain Dynamics Lab, she's researching the link between neural dynamics and cognition.

**DR. KELTIE DUGGIN**



M.D.

Keltie is a clinical lecturer at the University of Calgary and a hospitalist physician leader in the neurorehabilitation units at the Foothills Medical Centre and Vernon Fanning Centre.

**JAMES DURWARD**



President, CEO,  
Chief Technical Officer

James' expertise lies in data science and technical product experience, including image analysis, pattern recognition, and specialized databases.

# Clinical Study Comparative Results

nDatalyze launched an independent clinical study with York University. The objective of this study is to examine the effect of using certain DNA Snps/alleles to enhance YMI's predictive accuracy, with results to date showing significant correlations and high accuracy rates.

Model	YMI Expert guided	ML supervised	ML & DNA supervised
<b>Statistical Significance (lower=better)</b>	0.021	0.050	0.045
<b>Accuracy</b>	84%	81%	84%
<b>Precision</b>	86%	85%	90%
<b>Recall</b>	98%	75%	77%
<b>F1 Score (best overall)</b>	91%	80%	82%

# Corporate Management

**James Durward**  
President/CEO/CTO  
Director

Jim is a data scientist with over a decade of experience in image analysis, pattern recognition, and database development. He is a patented, published inventor with extensive public company experience.

**Dusan Kuzma**  
MBA, MSc, Director

Experienced in product development and commercialization, Dusan has served on the advisory board for advanced manufacturing technologies in Canada at the Information and Communications Technology Council.

**Dwayne Vinck**  
CA, CFO

As a qualified auditor, Dwayne brings financial reporting, directorships, executive leadership, change management, and project leadership. He also has experience in mergers and acquisitions and public company experience.

**Steve Price**  
P.Eng, Director

With over 35 years of experience in engineering and management, including corporate operations, evaluations, and facilities design and operation, Steve brings valuable expertise. He also has public company experience.

**Gordon Crawford**  
P.Eng, Director

Gord has over 30 years of engineering experience, including management roles in prestigious engineering firms. He was also a Co-Founding Partner and Vice President of a well-established mid-sized EPC engineering firm.

# Share Metrics

(as of December 7, 2024)

**CSE: NDAT OTCQB: NDATF**

Market Cap	~C\$3.8M
Recent share Price	C\$0.09
52 Week Range	C\$0.085 - C\$0.17
Shares Outstanding	~41.3 M
Management Ownership	~27%

## Contact Us

---

Jim Durward, President, CEO/CTO

[jimd@ndatalyze.com](mailto:jimd@ndatalyze.com)

(403) 689-3901

