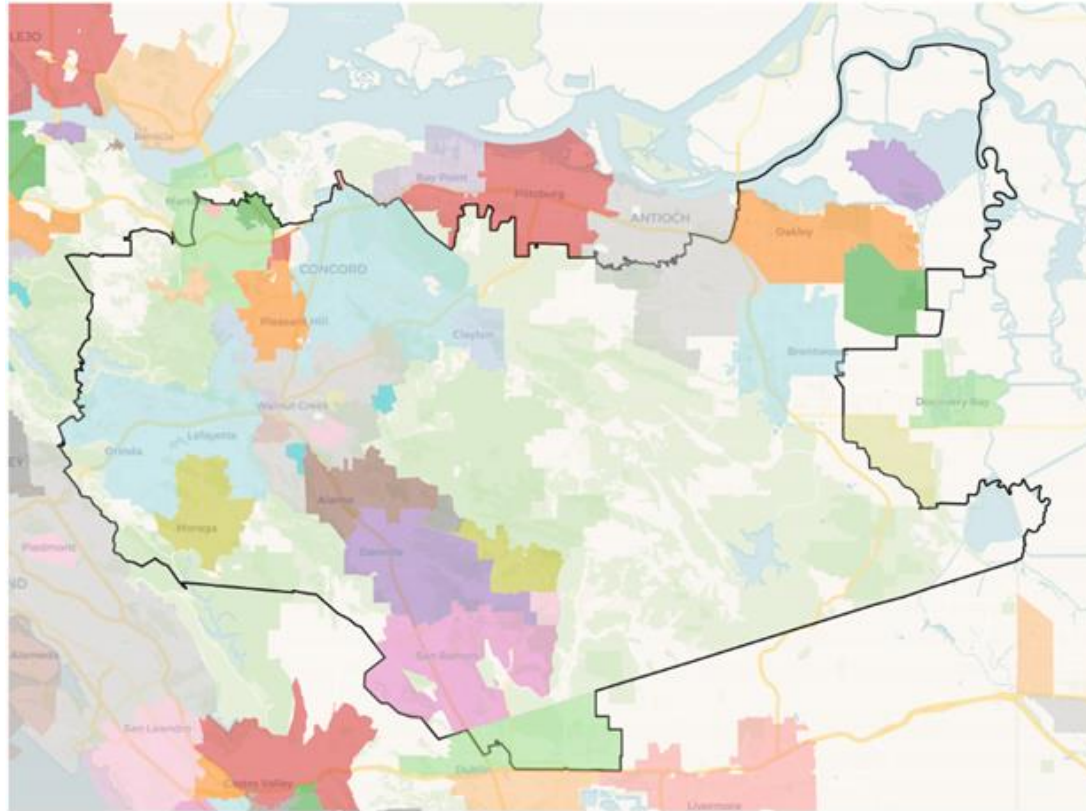




Transportation Town Hall

AUGUST 27, 2024

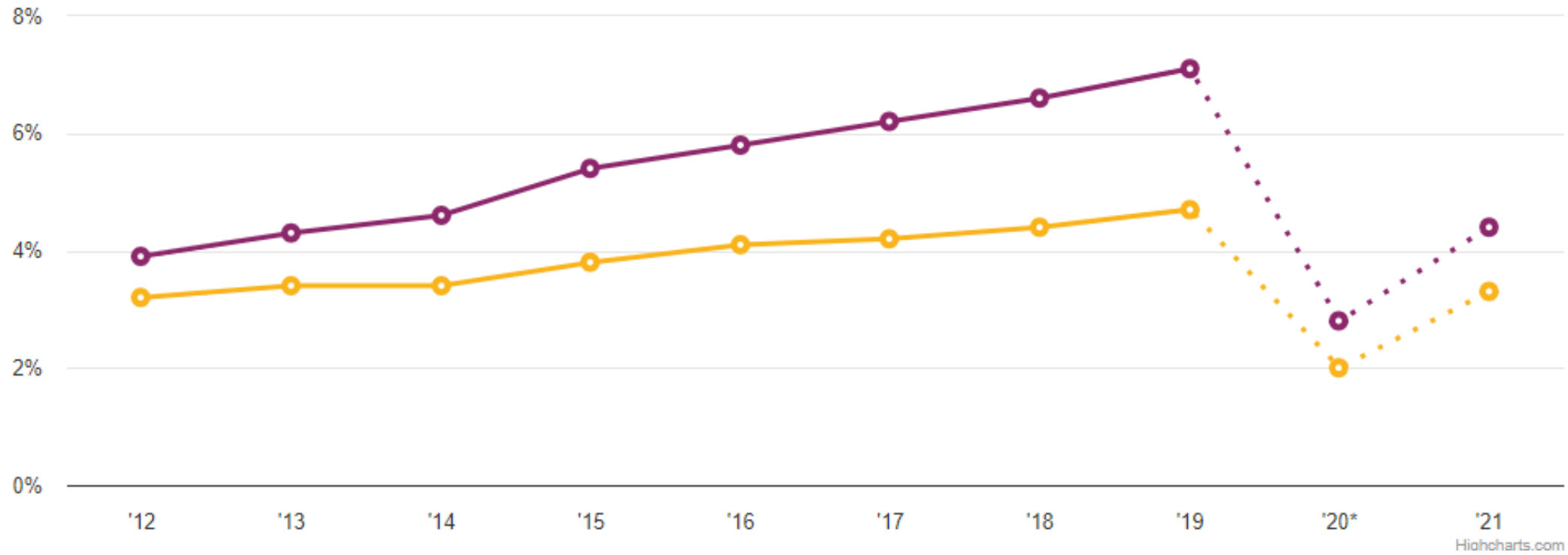
District 10



Commuting By The Numbers

- ▶ Megacommuters are defined as **commuters who travel 90 minutes or more one-way to work.**
- ▶ **In 2009, 3% of all commuters were megacommuters. In 2018, that figure had increased to 6.6%**
 - ▶ In real numbers, in 2018, there were 4.3 million workers with commutes of 90 minutes or more, up from 3.3 million in 2010.
- ▶ The COVID-19 pandemic heavily influenced commutes across the country.
- ▶ The average commute emits **3.2 tons of CO₂** per year per commuter.
- ▶ Commuting has been linked to higher cholesterol, higher blood pressure, decreased physical exercise, reduced socialization, less sleep, increased stress, and higher exposure to air pollutants.
- ▶ Long commutes can also take people away from social and family time, particularly impacting parents with children.

% Megacommute Bay Area & California

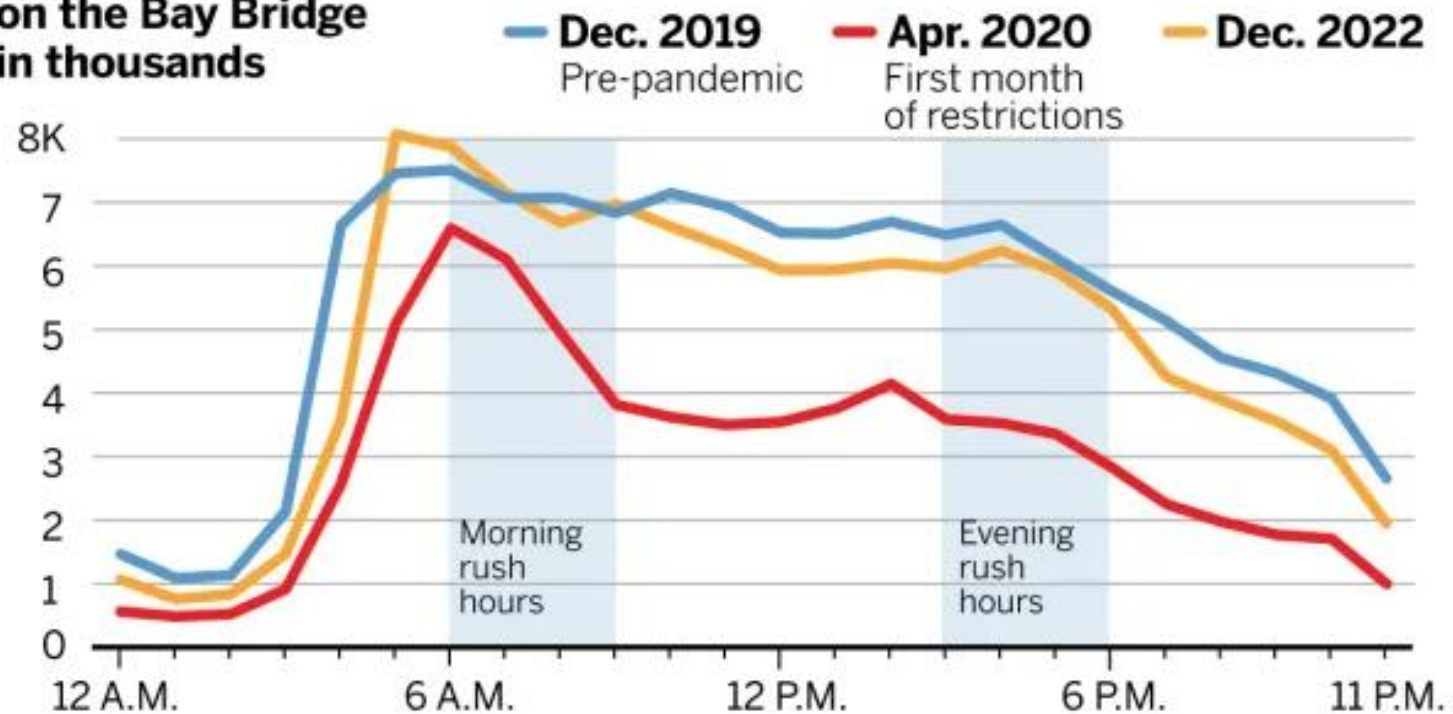


Bay Area —
California —

Traffic Congestion in the Bay

- ▶ The **Bay Area ranks 15th worldwide for traffic congestion**, with **drivers spending an average of 97 hours in traffic** in 2022.
- ▶ East Bay drivers that drive across the Bay Bridge and down the Peninsula have some of the worst commutes. Westbound I-80 speeds are down by 44% compared to 2019 as it approaches Highway 101.
- ▶ In 2018, **51% of all congested delays on Bay Area freeways occurred in Alameda and Contra Costa County**.
- ▶ 60% of all Bay Area commuters live 30 to 90 miles from their job sites.
- ▶ 9.1% of workers in Contra Costa County have 90 minute or more commute.
- ▶ In the Bay Area, in 2022, 54.8% of commuters drove to work, 5.5% relied on public transit, and 24.9% worked from home.

Average weekday crossings on the Bay Bridge in thousands



Source: Bay Area Toll Authority data, analysis
by the Bay Area Council Economic Institute

BAY AREA NEWS GROUP

Transportation Wins

- ▶ Senior member of the House Committee on Transportation and Infrastructure
- ▶ Led an effort to ensure residents don't face a **disproportionate and unfair raise in bridge tolls** before it is properly evaluated
- ▶ Led a letter to the Federal Highway Administration to ensure the **expansion of EV charging** along transit corridors and in communities is equitable and accessible for all
- ▶ Led an effort to **caution additional transit funding** from increased Bay Area taxes or tolls without **transformational and effective change in transit** in the Bay to refocus on the experience of the rider
- ▶ Supported **active transportation expansion**, including improving safety and accessibility of pedestrian and biking access
- ▶ Supported funding for **transportation projects** in CA-10 to reduce emissions, improve safety, and install and expand smart traffic signals

Bipartisan Infrastructure Law and Inflation Reduction Act

- ▶ The Bipartisan Infrastructure Law, CHIPS and Science Act, and Inflation Reduction Act provided **significant investments** into the transportation sector, including:
 - ▶ **Electric vehicle tax credits**
 - ▶ Extended tax credits for EV charging, including for bidirectional chargers
 - ▶ \$1 billion **for zero-emission heavy duty vehicles**
 - ▶ \$6.4 billion for carbon reduction program to **reduce transportation climate pollution**.
- ▶ **California** is expected to receive a total of over **\$30 billion for transportation investments** in roads, bridges, public transit, ports and airports; and \$7 billion in the EV and battery industry

Housing and Transit-Oriented Development

- ▶ Congressman DeSaulnier's bills would help create walkable, safe, affordable and less car-dependent communities by tying land use and transit together:
 - ▶ **Equitable Transit-Oriented Development Support Act:** Would help transit-oriented development (TOD) projects qualify for funding
 - ▶ **Incentivizing Value Capture for Greener Transportation Act:** Would support the use of value capture to promote mobility, public transportation, and affordable TOD
- ▶ TOD can improve transit access, increase **multimodal travel**, and **decrease transportation costs**. Over time, these neighborhoods also encourage more walking and transit use over driving.
- ▶ TOD can provide affordable housing options by reducing the need for parking if residents live close to viable transit options and in walkable communities
 - ▶ Each parking spot can add anywhere from **\$30,000 to \$90,000** to the cost of building homes.

Transit-Oriented Development



TOD example at Pleasant Hill BART Station

Other examples include:

- New York City
- Tokyo

Impact of Long Commutes on Families

- ▶ For many parents, more time spent commuting to and from work means less time with their children.
- ▶ This is particularly hard on new families, who risk missing out on a **critical period of cognitive development** where frequent parent-child interaction is especially important.
- ▶ Long commutes and their effects increase stress among parents, which has been shown to **decrease parenting effectiveness** and **increase behavior problems among children**.
- ▶ **Traffic congestion and long commutes are particularly harmful for children**, because they are more susceptible than adults to the negative health effects of air pollution.

Wins for Working Families & Democratic Proposals

- ▶ Senior member of the Education & the Workforce Committee, which has jurisdiction over childcare and early education.
- ▶ Supported efforts to secure robust funding for Family Resource Centers and the Social Services Block Grant in FY25.
- ▶ President Biden and Congressional Democrats' Build Back Better framework proposed:
 - ▶ **Capping the amount that each family spends on childcare** at 7% of their income
 - ▶ **Universal pre-k** for all 3- and 4-year-olds
 - ▶ Permanently extending the American Rescue Plan's expanded **Child Tax Credit**
 - ▶ **Expanding free school meals** to 8.7 million children during the school year and providing a benefit to help families with children purchase food during the summer

Contact Our Office

Walnut Creek

3100 Oak Road
Suite 110
Walnut Creek, CA
(925) 933-2660

Antioch

4703 Lone Tree Way
Antioch, CA
(925) 754-0716

Washington, DC

503 Cannon HOB
Washington, DC
(202) 225-2095



Facebook: /RepMarkDeSaulnier



Instagram: @RepDeSaulnier



Twitter: @RepDeSaulnier



Website: desaulnier.house.gov