



NEWS RELEASE

FOR IMMEDIATE RELEASE

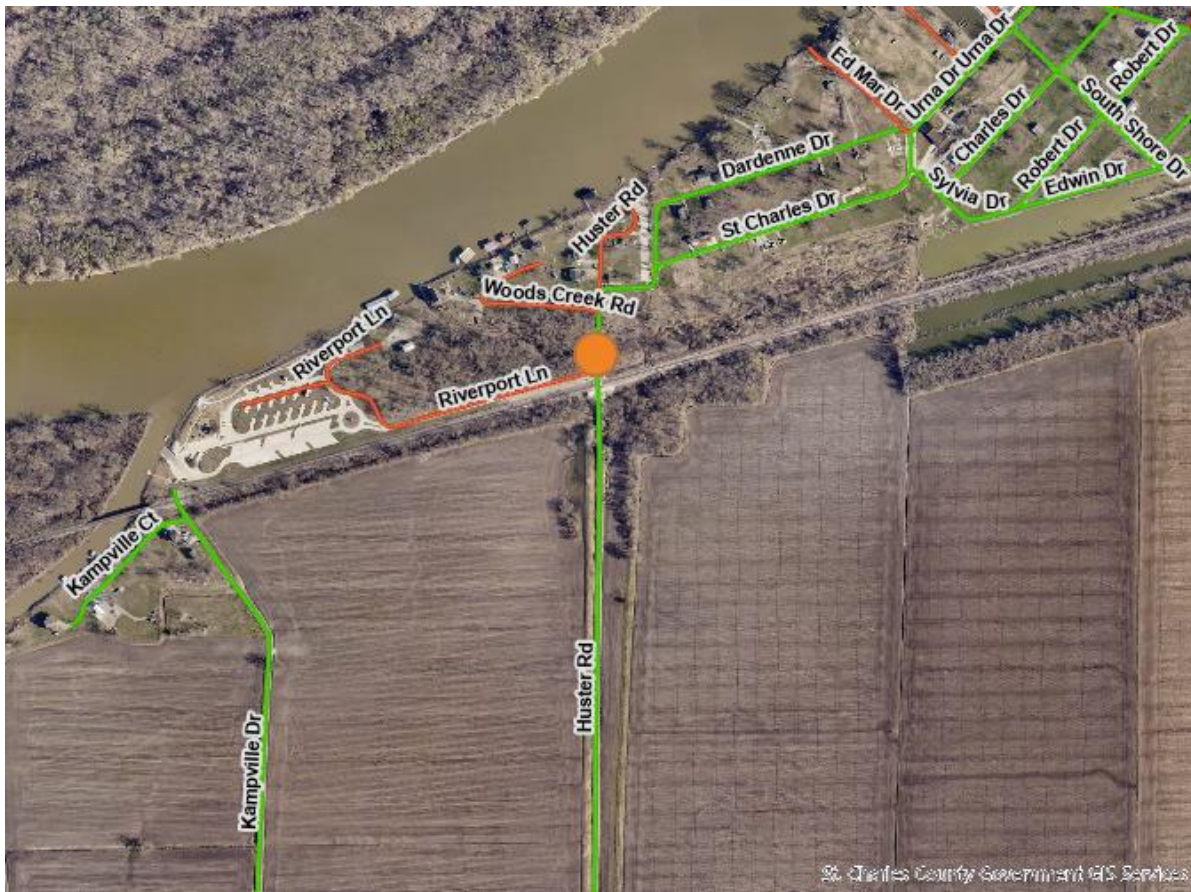
October 28, 2024

HUSTER ROAD TO CLOSE NOVEMBER 4TH

ST. CHARLES COUNTY, MO – The St. Charles County Highway Department will close Huster Road north of the Riverport Lane (weather permitting) Monday, November 4, to replace a pipe culvert. The closure is expected to last one week.

Traffic will be required to use an alternate route around the closure while the culvert is being replaced. Local traffic can access either side of the closure location, but no *through* traffic will be permitted. Signs will be posted telling motorists of the closure and detours.

This road project is part of a continuing effort by St. Charles County Government to improve the County's road system for the safety of the travelling public. For more information about road projects underway in unincorporated St. Charles County, please call the Highway Department at 636-949-7305 or visit [sccmo.org/RoadProjects](https://www.sccmo.org/RoadProjects).



-end-

Media Contact: Kevin Killeen, Communications Director, 636-949-7900 ext. 1856, kkilleen@sccmo.org

About St. Charles County:

St. Charles County, Missouri, founded in 1812, is one of the fastest growing counties in Missouri. With a population of 405,262, it is the state's third largest county. It is home to 21 scenic county parks of which four are in reserve, encompassing 4,151 acres.

With one of the largest economies in the state, St. Charles County is home to multinational companies including General Motors, Citi, MasterCard Worldwide and Boeing. It is ranked among the top 25 counties in the nation in high-tech job growth by the Progressive Policy Institute and consistently has the lowest unemployment rate in the Metropolitan St. Louis area.

St. Charles County Government has more than 1,170 employees in more than 30 departments and offices who work to make the county an excellent place to live, work and shop. For more information, please visit sccmo.org.