

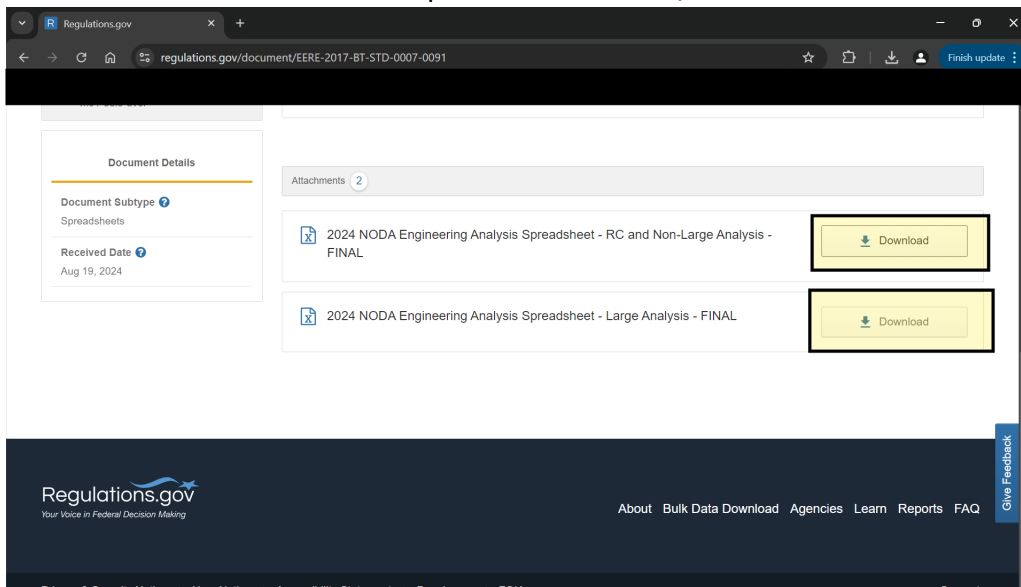
## Troubleshooting access to the CRE NODA Engineering Spreadsheets

Note: The Engineering spreadsheets are Microsoft Excel spreadsheets that present the inputs, assumptions, and calculations used in modeling the performance of baseline and higher-efficiency models of commercial refrigeration equipment under the conditions of the DOE test procedure. The workbook contains separate tabs showing the design specifications, design option inputs, engineering assumptions, performance and cost calculations, and results.

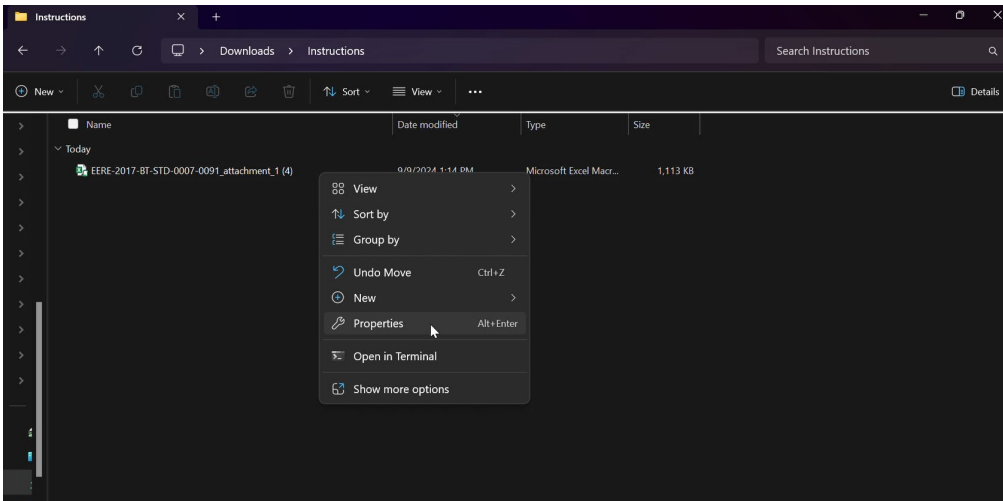
The design options, design specifications, and baseline cost-efficiency results can also be found in sections 2 and 3 of the NODA support document (<https://www.regulations.gov/document/EERE-2017-BT-STD-0007-0090>)

This document contains steps to help troubleshoot if you are unable to open the spreadsheet.

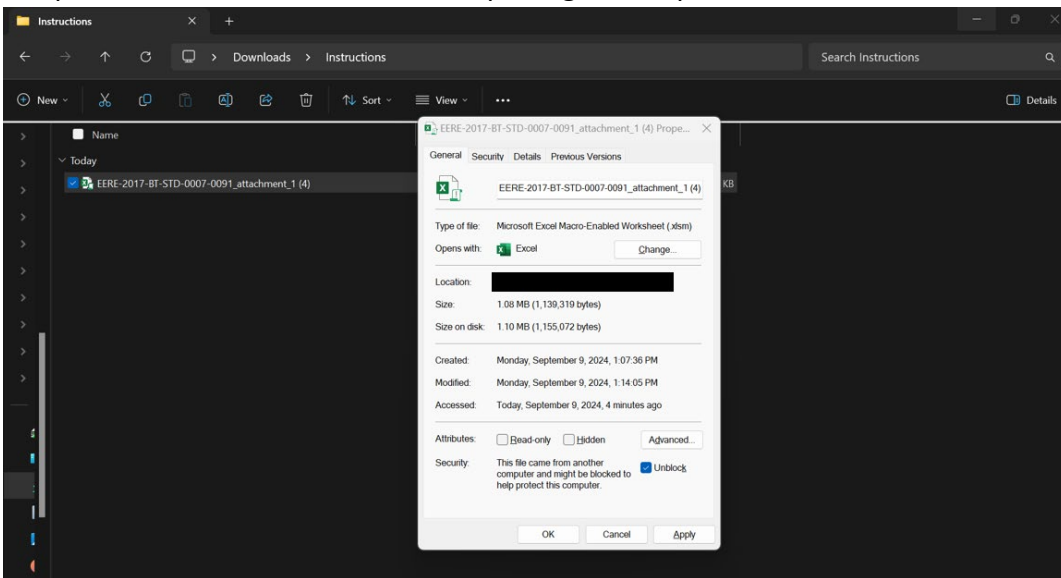
1. Open your preferred web browser and navigate to the engineering spreadsheets on the docket: <https://www.regulations.gov/document/EERE-2017-BT-STD-0007-0091>
  - a. There are two separate engineering spreadsheets: “RC and Non-Large” and “Large”. The troubleshooting steps apply to both spreadsheets.
2. Click “Download” to download the file to your computer – NOTE: This file contains macros and is therefore not compatible with mobile/tablet versions of Excel.



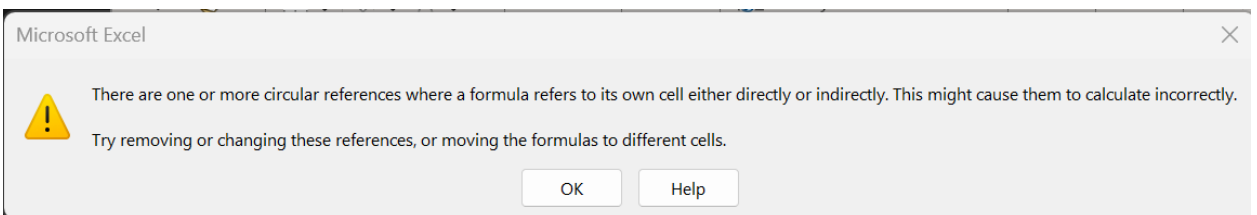
3. Go to your “Downloads” folder (or other location where you saved the file). Right click on the file and click on “Properties.”



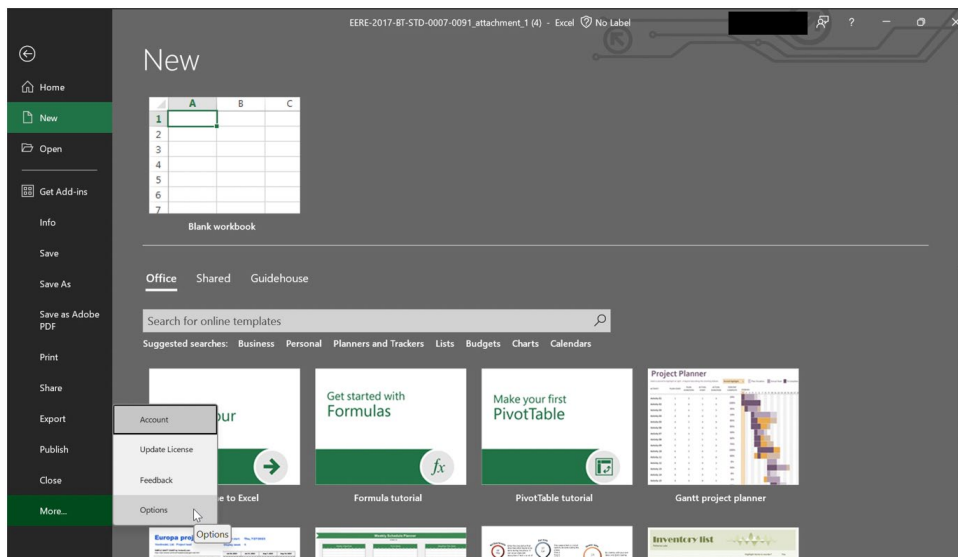
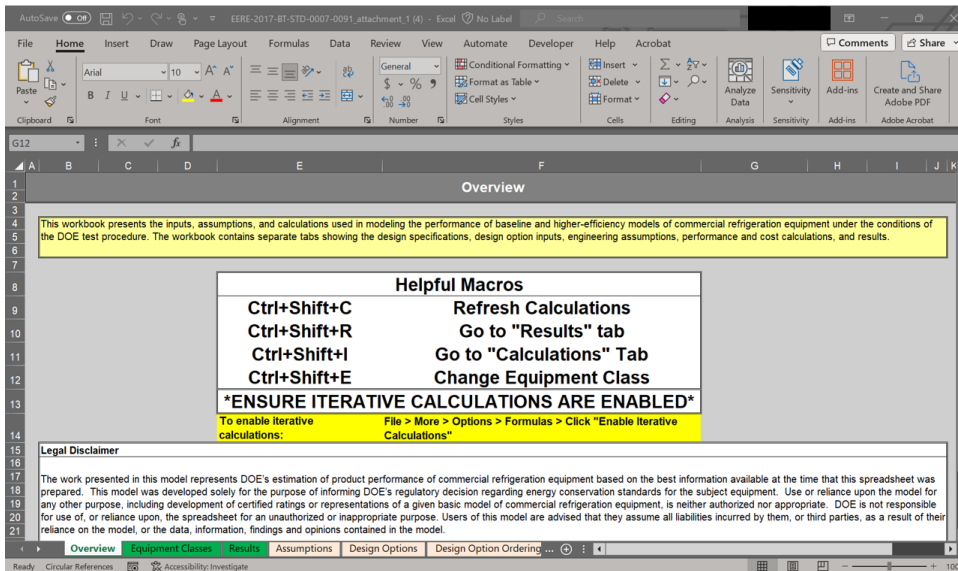
4. Click “Unblock,” then “OK” to allow the spreadsheet to enable macros from a file downloaded from the internet. If you do not see the option shown below, you may need to open and close the file before completing this step.



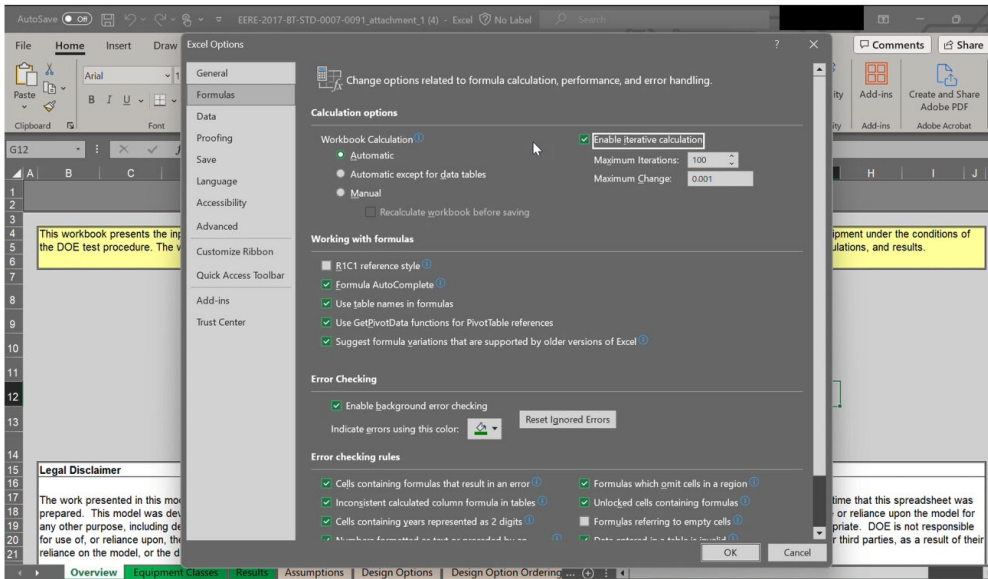
5. You can now open the file. There will likely be a pop-up like the one below stating that there are circular references. Click “OK”.



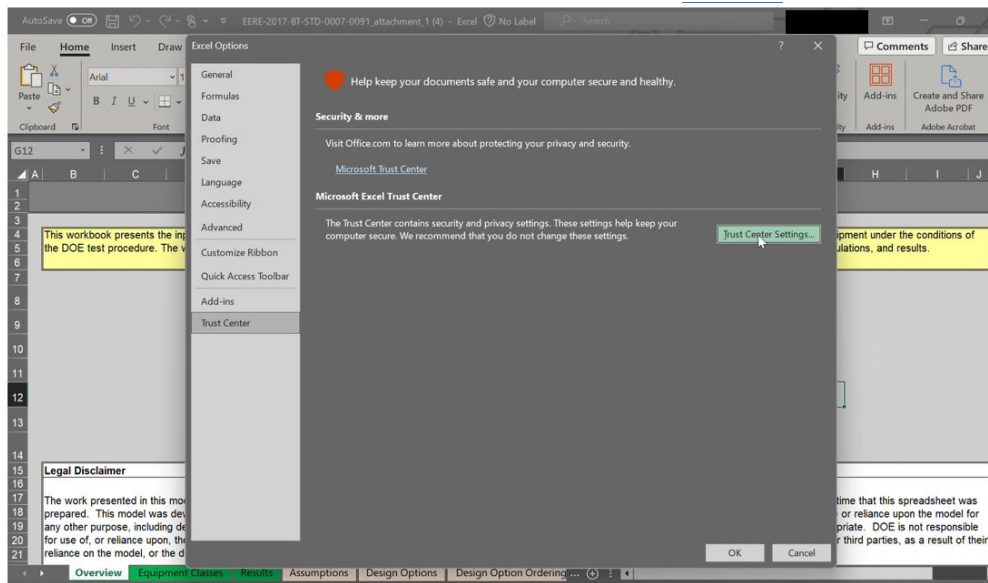
6. Once you are into the document, there are still a few more steps to make sure everything works properly. In the top left corner, click “File” > “More” > “Options.”



7. Then go to "Formulas" and make sure iterative calculations are enabled.



8. Then go to “Trust Center” and click on “Trust Center Settings”



9. Make sure that macros are enabled, and the document is trusted. Click “OK” and the spreadsheet should be functioning properly.

