



United States
Environmental Protection Agency

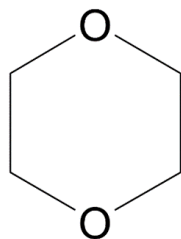
November 2024
Office of Chemical Safety and
Pollution Prevention

Supplement to the Risk Evaluation for 1,4-Dioxane

Supplemental Information File:

Land Use Analysis for Ambient Air

CASRN 123-91-1



November 2024

1,4 D Fenceline Analysis Deeper Dive Summary

Overview of 1,4 D Facilities

Summary of fenceline communities exposures expected near facilities where modeled air concentrations indicated risk for 1,4 D

OES	COU	Total Number of Facilities Evaluated	Number of Facilities with Risk Indicated ^a	Number of Facilities with Risk Indicated and Fenceline Communities Exposures Expected ^a	Percent of Total Facilities with Risk Indicated and Fenceline Communities Exposures Expected ^a
Disposal	Disposal	15	4	1	7%
Ethoxylation Byproduct	Ethoxylation byproduct (new use added since RE was published)	6	3	2	33%
Industrial Uses	Industrial Uses	12	4	1	8%
Manufacturing	Manufacture	1	1	1	100%
PET Manufacturing	PET Manufacturing (new use added since RE was published)	13	10	6	46%

^aOnly includes facilities with TRI ID

Individual 1,4 D Facility Summaries

1. Facility: PCI Synthesis

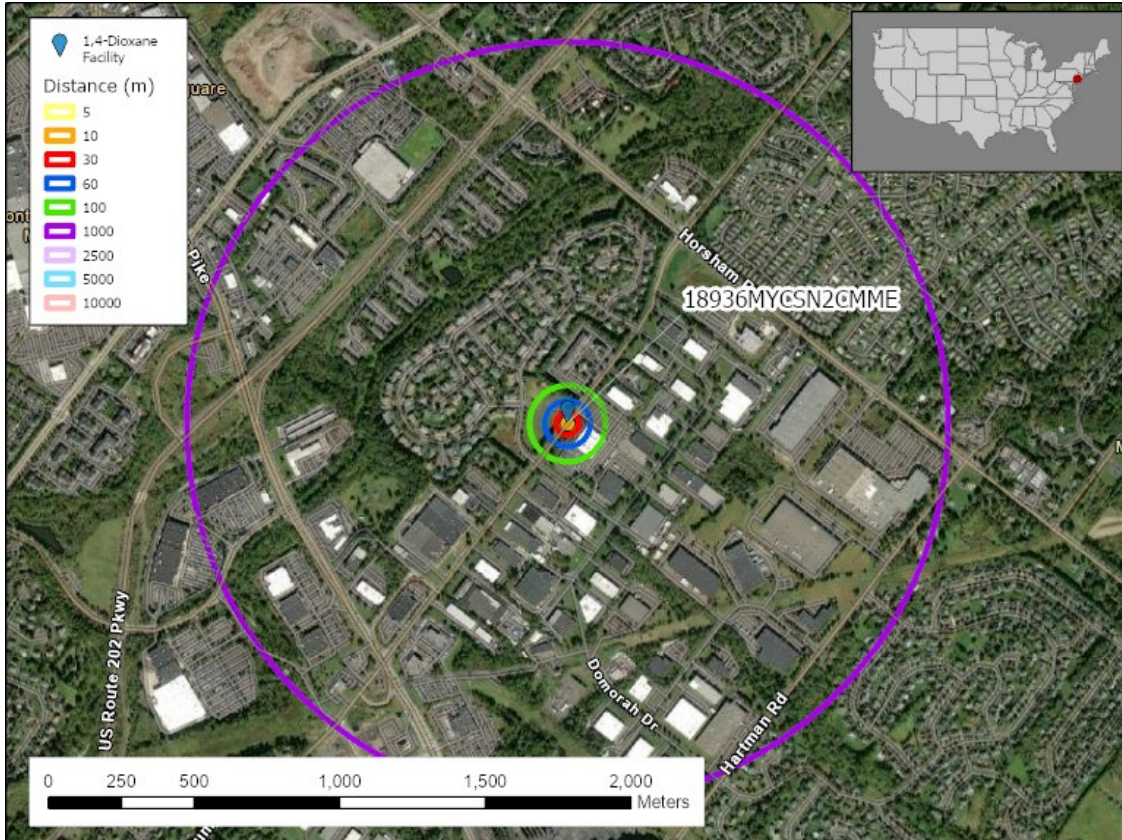
- **Location:** Newburyport, MA
- **Releases:** 110 kg/site-year (20% Fugitive, 80% Stack)
- **Methodology identified risk in 5-10 m**
- **Land use for 5-30 m:** Within facility.



- **Expected risk to fence line communities?** No
- **Facility Summary:** Risk is within facility of 30 m.

2. Facility: Saint Gobain Abrasives Inc

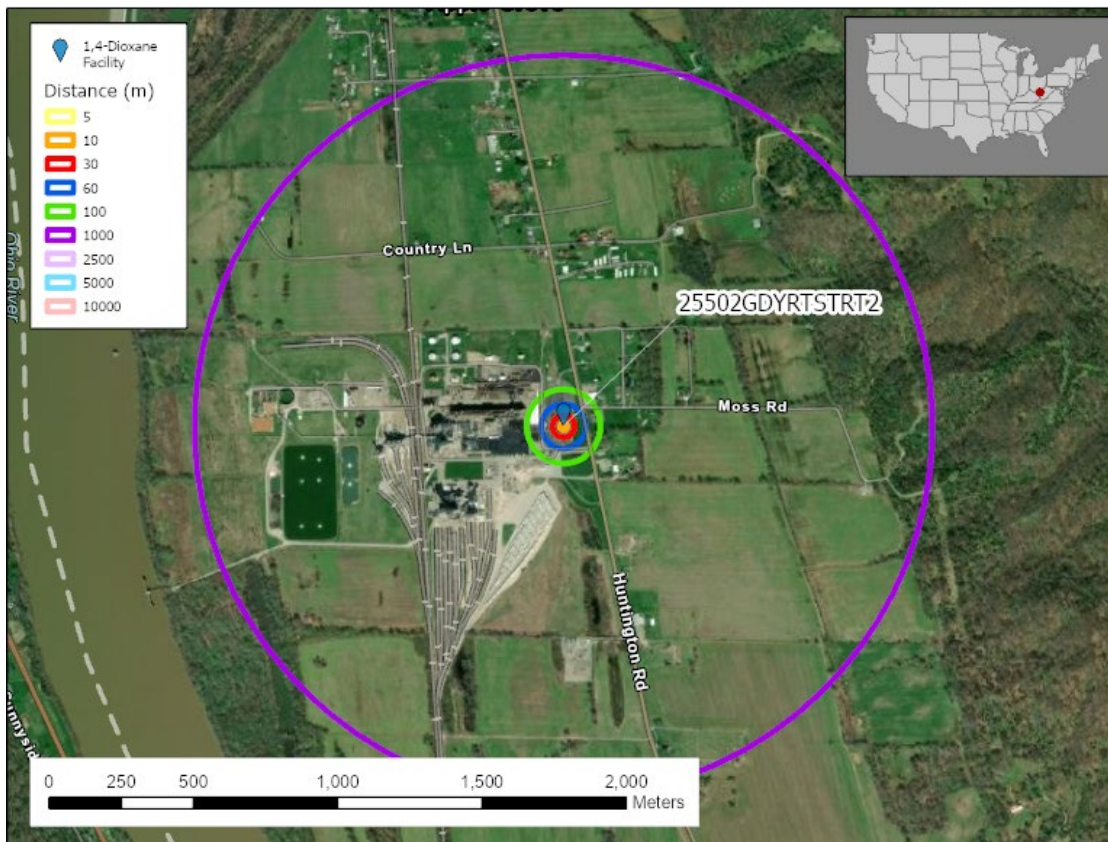
- **Location:** Montgomeryville, PA
- **Releases:** 725 kg/site-year (36% Fugitive, 64% Stack)
- **Methodology identified risk in 5-100 m**
- **Land use for 5-1,000 m:** Residential, other industrial, and commercial.



- **Expected risk to fenceline communities?** Yes
- **Facility Summary:** Risk to residents, other industrial workers, and commercial businesses within 1,000 m.

3. **Facility:** APG Polytech LLC

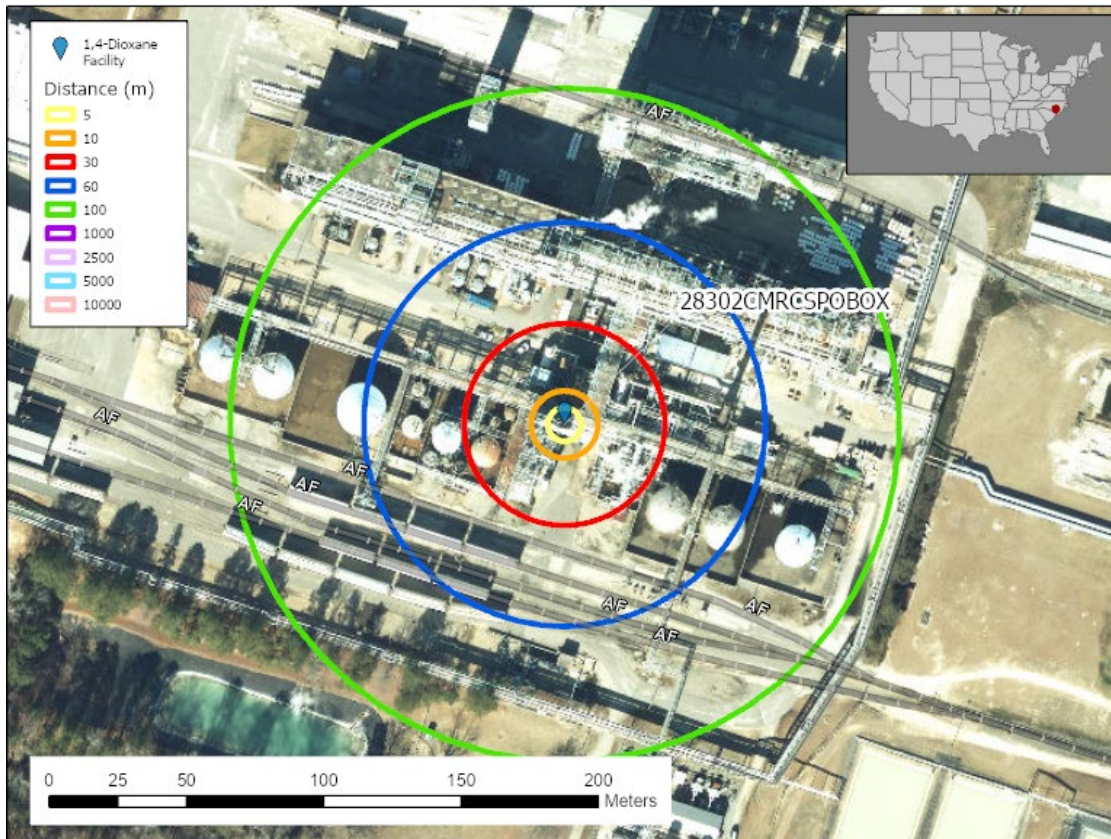
- **Location:** Apple Grove, WV
- **Releases:** 870.72 kg/site-year (100% Fugitive)
- **Methodology identified risk in 5-100 m**
- **Land use for 5-1,000 m:** Residential, other industrial, and commercial.



- **Expected risk to fenceline communities? Yes**
- **Facility Summary:** Risk to residents within 1,000 m.

4. **Facility:** Dak Americas LLC

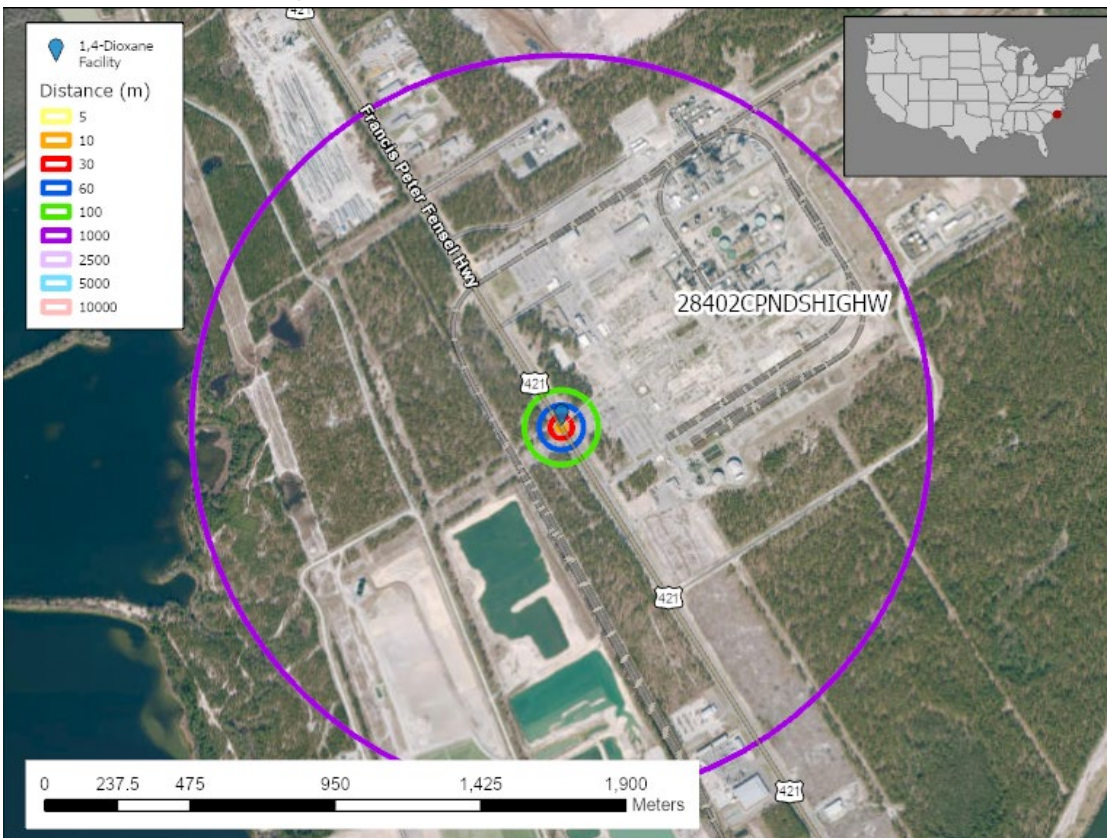
- **Location:** Fayetteville, NC
- **Releases:** 128.7 kg/site-year (90% Fugitive, 10% Stack)
- **Methodology identified risk in 5-60 m**
- **Land use for 5-100 m:** Residential, other industrial, and commercial.



- **Expected risk to fenceline communities? No**
- **Facility Summary:** Risk is within facility of 100 m.

5. **Facility:** INV Performance Surfaces LLC

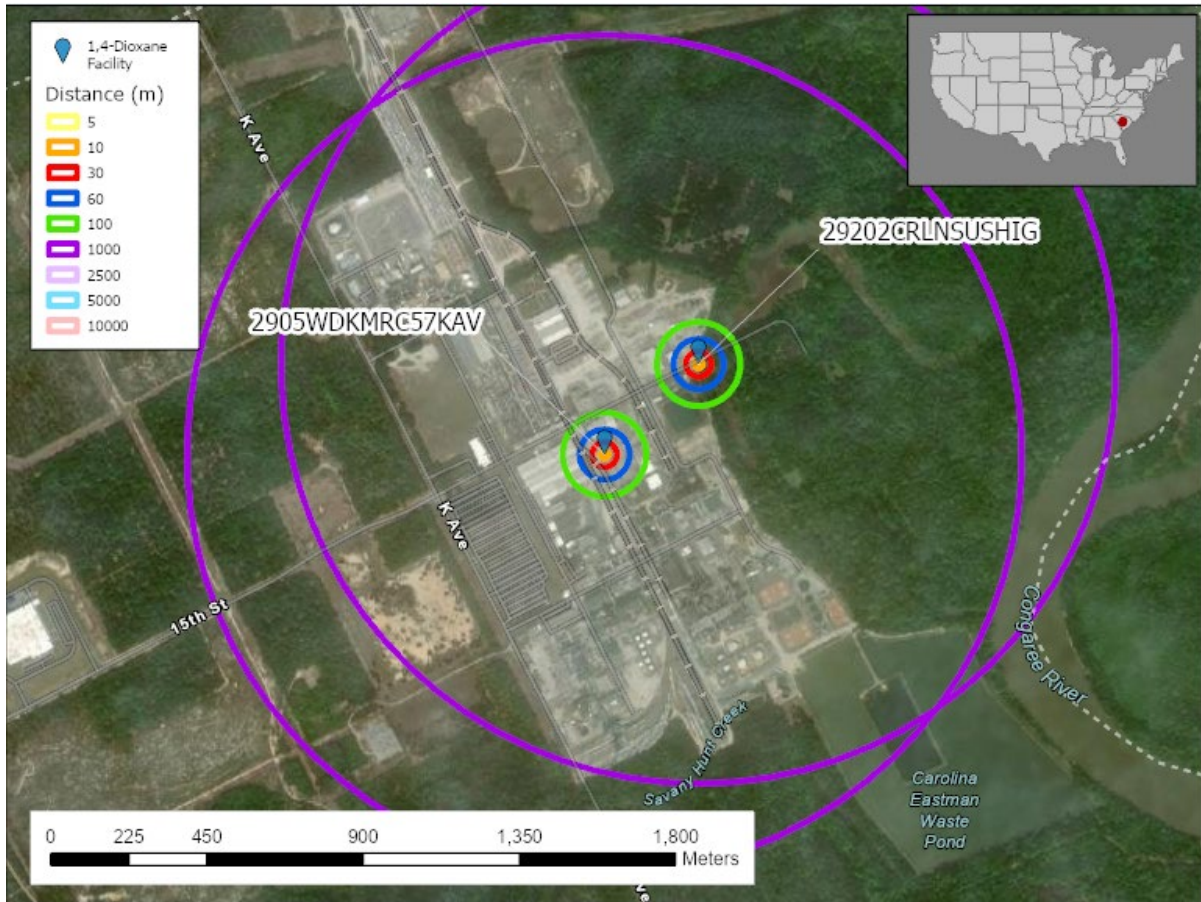
- **Location:** Wilmington, NC
- **Releases:** 3,210 kg/site-year (13% Fugitive, 87% Stack)
- **Methodology identified risk in 5-100 m**
- **Land use for 5-1,000 m:** Other industrial.



- **Expected risk to fenceline communities? Yes**
- **Facility Summary:** Risk to other industrial workers within 1,000 m.

6. **Facility:** Dak Americas LLC-Columbia Site

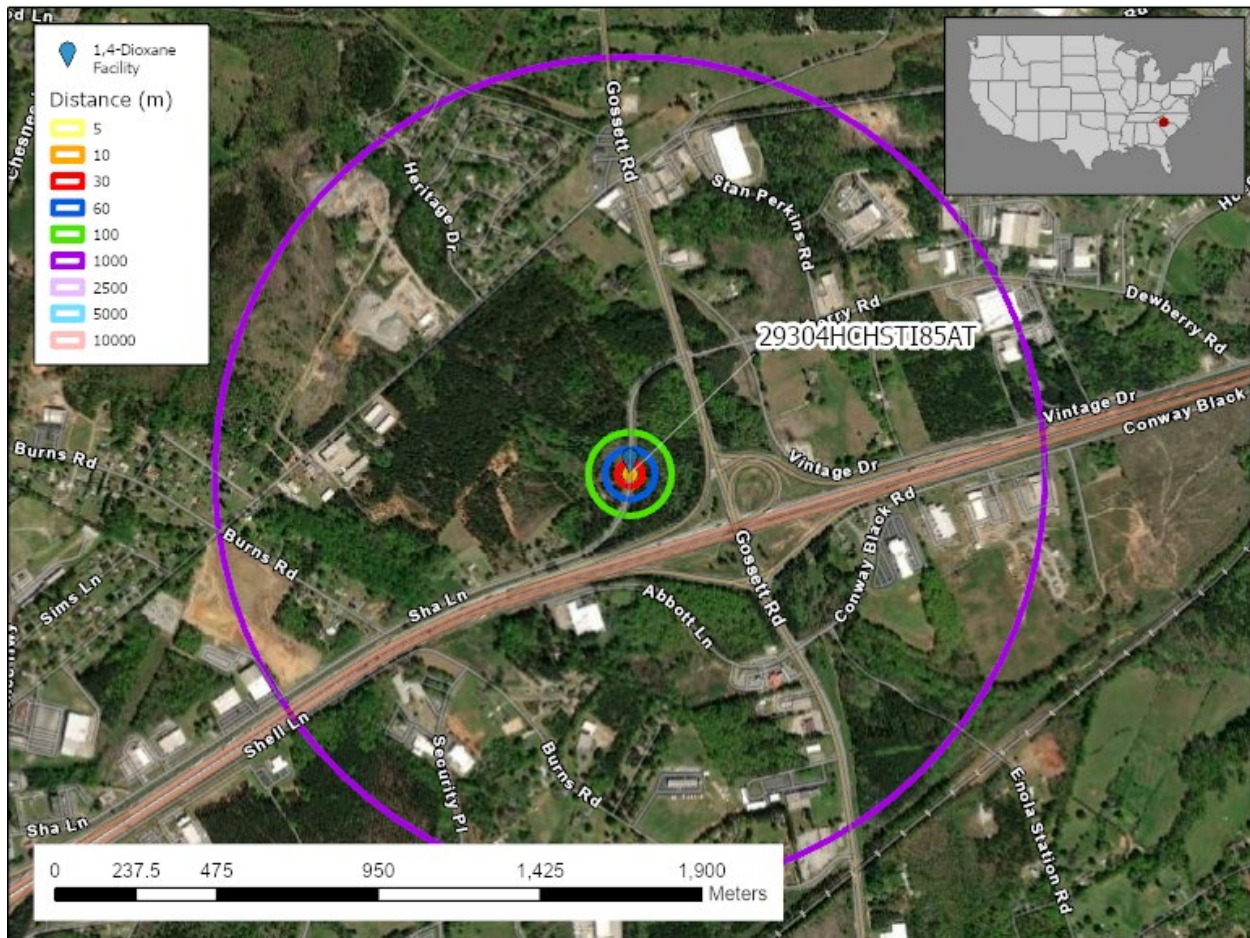
- **Location:** Gaston, SC
- **Releases:** 7,690 kg/site-year (1% Fugitive, 99% Stack)
- **Methodology identified risk in 5-100 m**
- **Land use for 5-1,000 m:** Other industrial.



- **Expected risk to fenceline communities? Yes**
- **Facility Summary:** Risk to other industrial workers within 1,000 m.

7. **Facility:** Auriga Polymers Inc-Spartanburg Facility

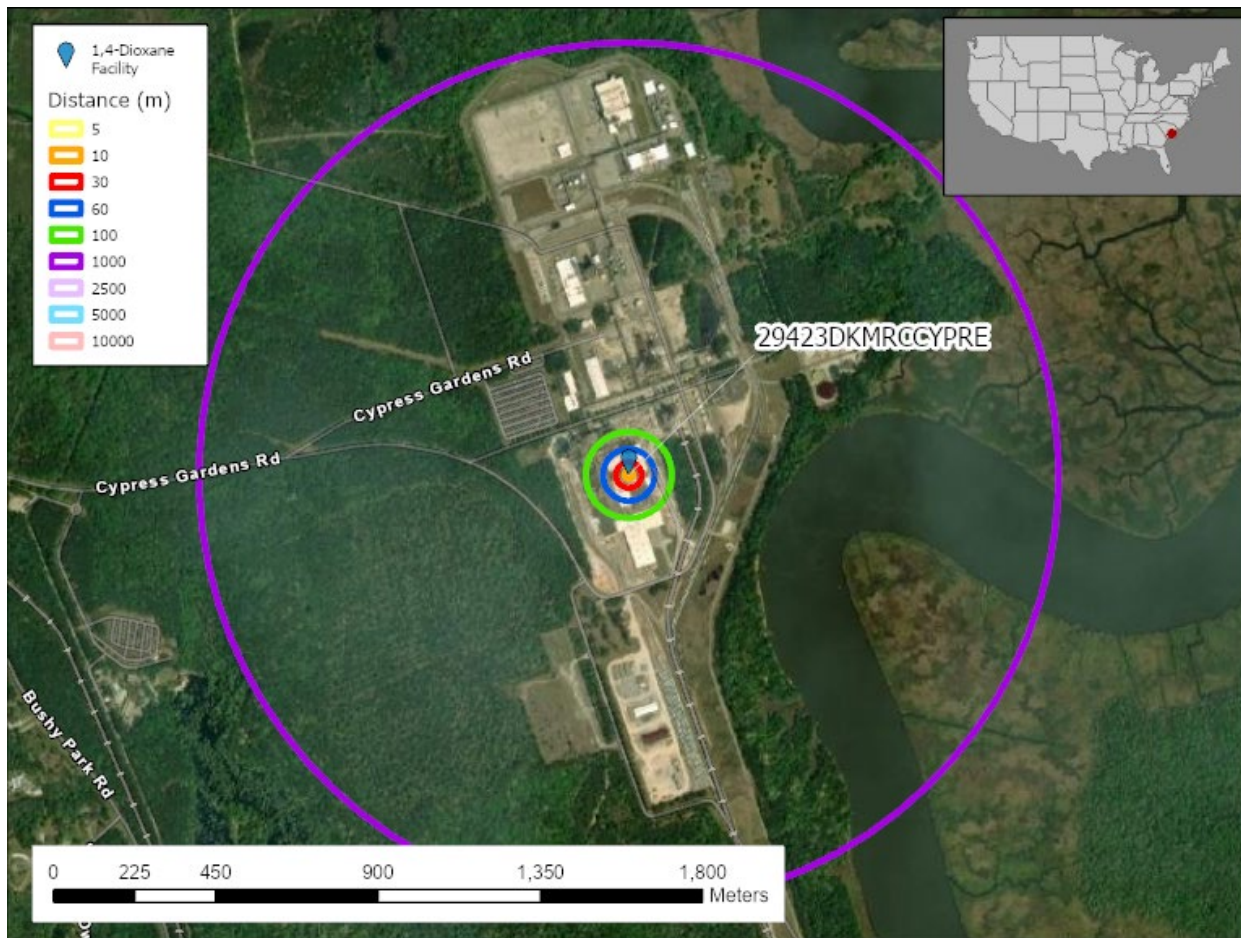
- **Location:** Spartanburg, SC
- **Releases:** 3,410 kg/site-year (7% Fugitive, 93% Stack)
- **Methodology identified risk in 5-100 m**
- **Land use for 5-1,000 m:** Residential, other industrial, and commercial.



- **Expected risk to fenceline communities? Yes**
- **Facility Summary:** Risk to other industrial workers within 1,000 m.

8. **Facility:** Dak Americas LLC Cooper River Plant

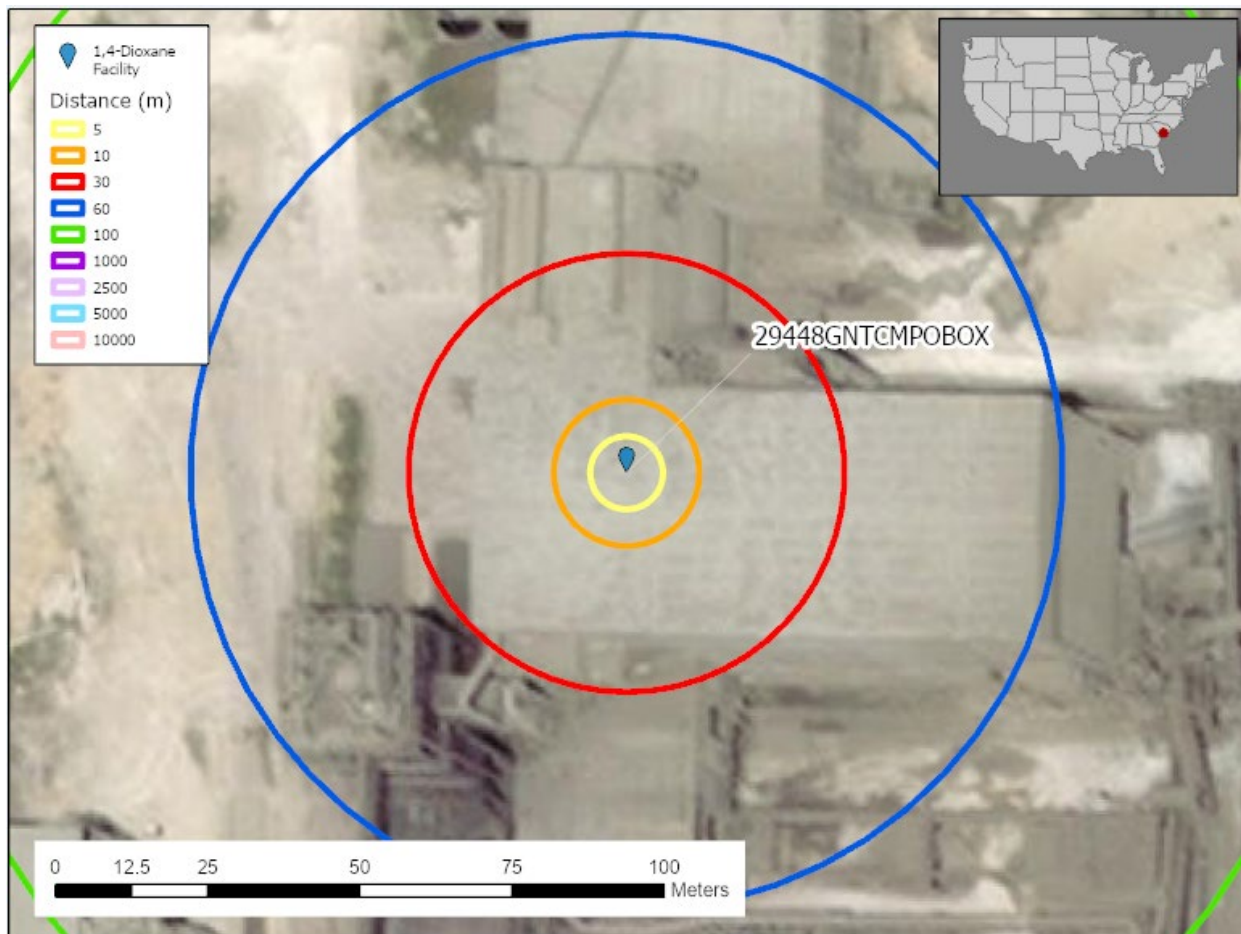
- **Location:** Moncks Corner, SC
- **Releases:** 3,867 kg/site-year (13% Fugitive, 87% Stack)
- **Methodology identified risk in 5-100 m**
- **Land use for 5-1,000 m:** Within facility.



- **Expected risk to fenceline communities? Yes**
- **Facility Summary:** Risk to other industrial workers within 1,000 m.

9. **Facility:** Giant Cement Co

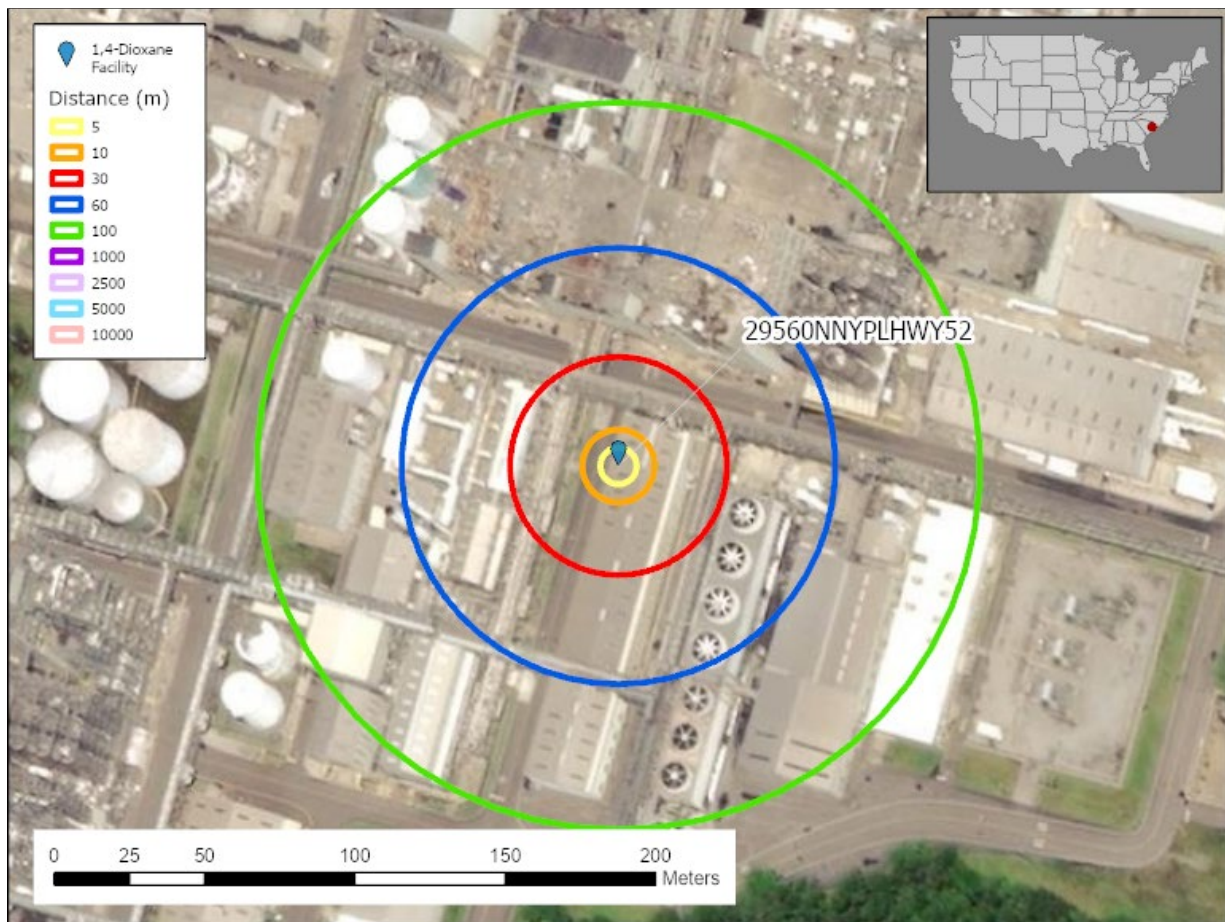
- **Location:** Harleyville, SC
- **Releases:** 40 kg/site-year (83% Fugitive, 18% Stack)
- **Methodology identified risk in 5-10 m**
- **Land use for 5-30 m:** Within facility.



- **Expected risk to fenceline communities? No**
- **Facility Summary:** Risk is within facility of 30 m.

10. Facility: Nan Ya Plastics Corp America

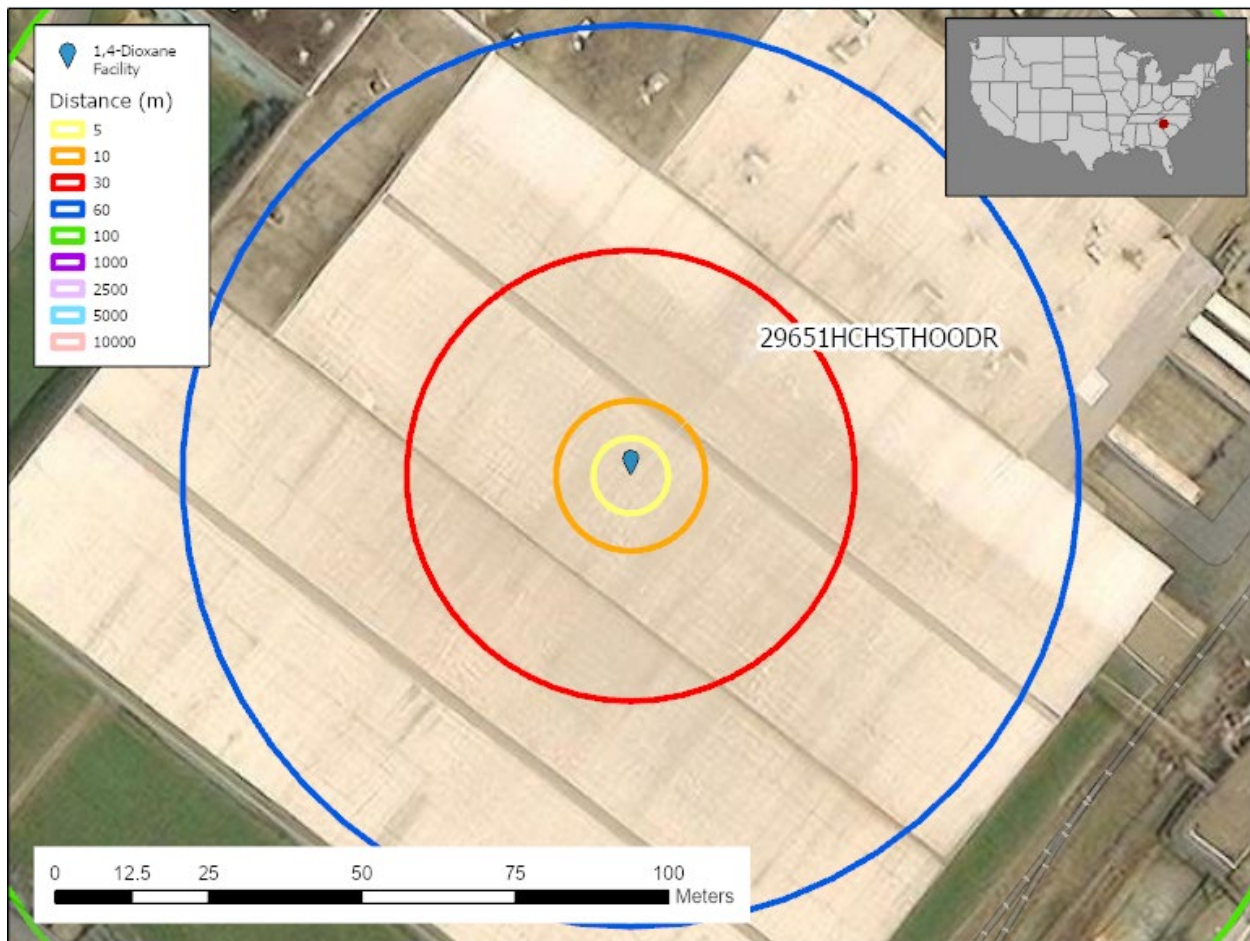
- **Location:** Lake City, SC
- **Releases:** 1,595 kg/site-year (10% Fugitive, 90% Stack)
- **Methodology identified risk in 5-60 m**
- **Land use for 5-100 m:** Within facility.



- **Expected risk to fenceline communities? No**
- **Facility Summary:** Risk is within facility of 100 m.

11. Facility: Mitsubishi Chemical America Inc - Polyester Film Div

- **Location:** Greer, SC
- **Releases:** 33.6155 kg/site-year (92% Fugitive, 8% Stack)
- **Methodology identified risk in 5-10 m**
- **Land use for 5-30 m:** Within facility.



- **Expected risk to fenceline communities? No**
- **Facility Summary:** Risk is within facility of 30 m.

12. Facility: Indorama Ventures

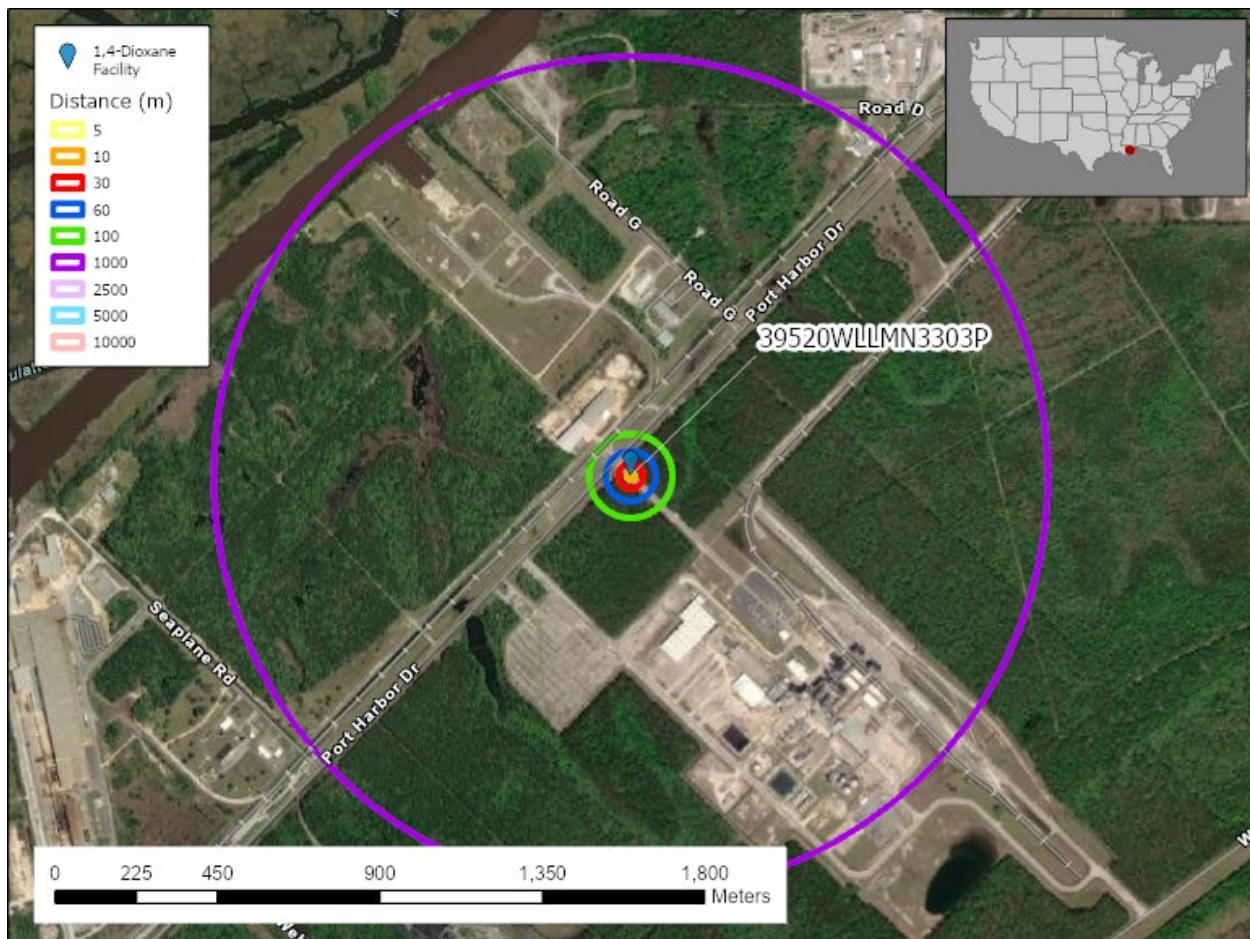
- **Location:** Decatur, AL
- **Releases:** 24.68 kg/site-year (86% Fugitive, 14% Stack)
- **Methodology identified risk in 10 m**
- **Land use for 30 m:** Within facility.



- **Expected risk to fenceline communities? No**
- **Facility Summary:** Risk is within facility of 30 m.

13. Facility: Dak Americas Mississippi Inc

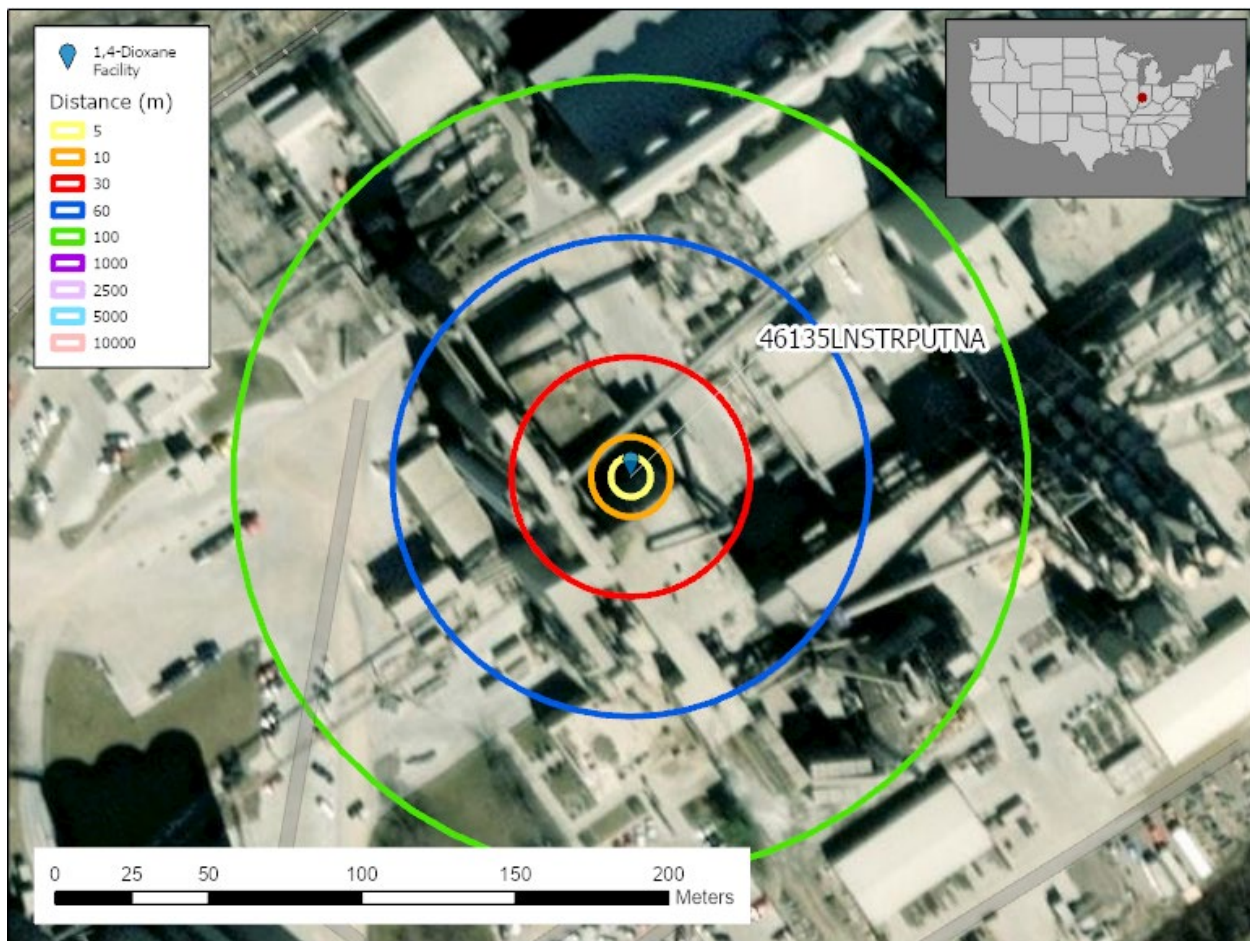
- **Location:** Bay Saint Louis, MS
- **Releases:** 1499.06 kg/site-year (7% Fugitive, 93% Stack)
- **Methodology identified risk in 5-100 m**
- **Land use for 5-1,000 m:** Other industrial.



- **Expected risk to fenceline communities?** Yes
- **Facility Summary:** Risk to other industrial workers within 1,000 m.

14. **Facility:** Buzzi Unicem USA-Greencastle Plant

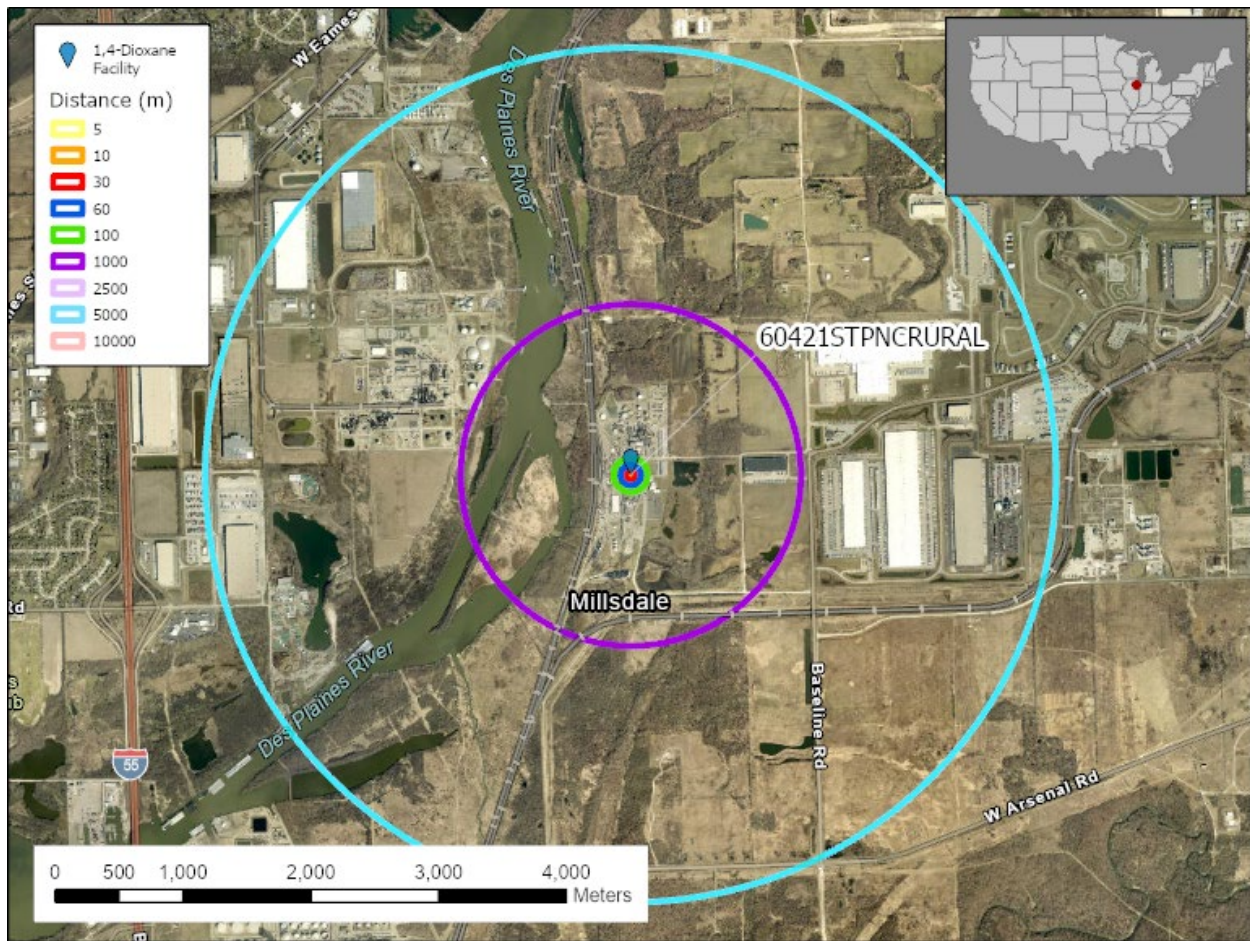
- **Location:** Greencastle, IN
- **Releases:** 305 kg/site-year (85% Fugitive, 15% Stack)
- **Methodology identified risk in 5-60 m**
- **Land use for 5-100 m:** Within facility.



- **Expected risk to fenceline communities? No**
- **Facility Summary:** Risk is within facility of 100 m.

15. **Facility:** Stepan Co Millsdale Road

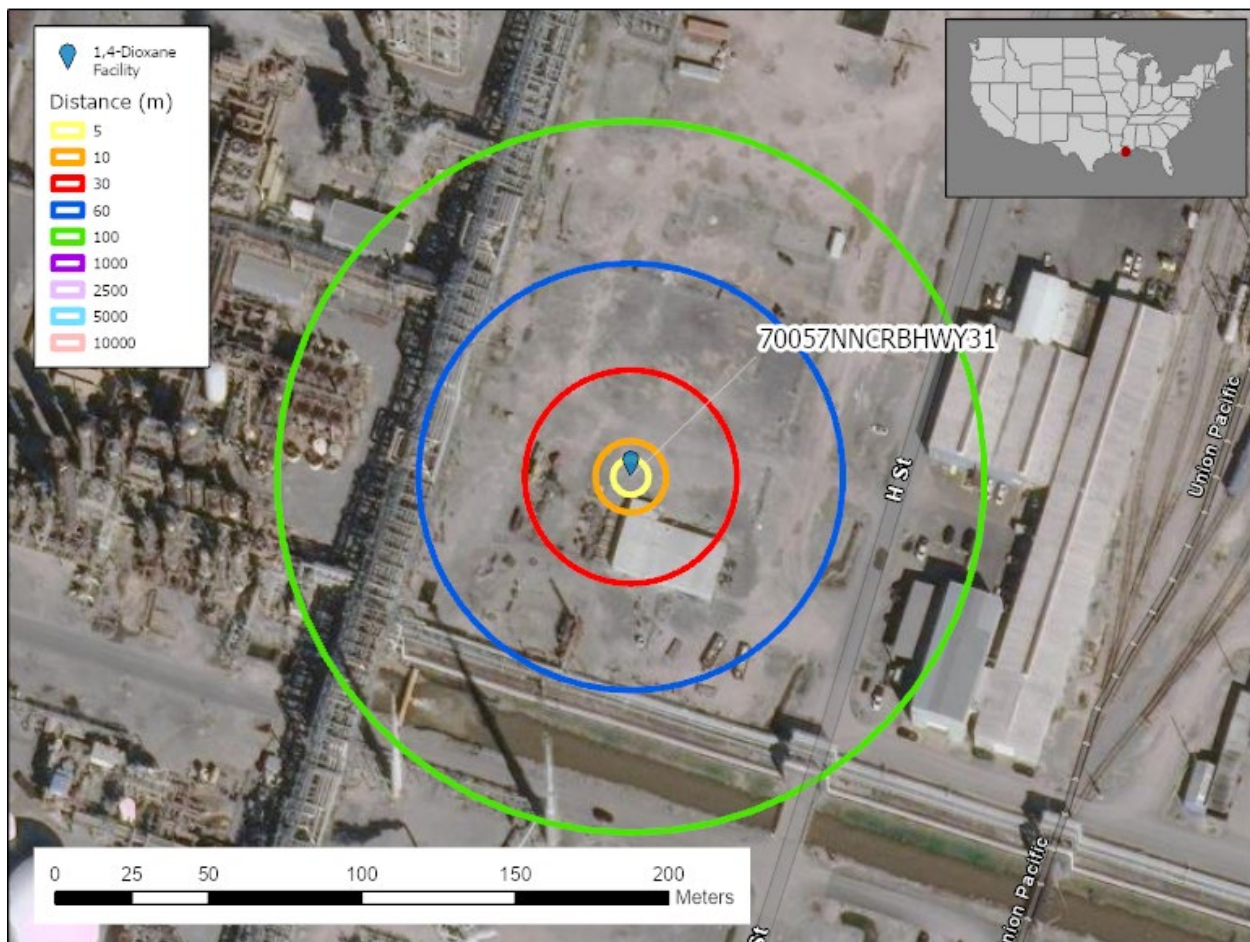
- **Location:** Elwood, IL
- **Releases:** 21,874 kg/site-year (19% Fugitive, 81% Stack)
- **Methodology identified risk in 5-1,000 m**
- **Land use for 5-2,500 m:** Other industrial.



- **Expected risk to fenceline communities? Yes**
- **Facility Summary:** Risk to other industrial workers within 2,500 m.

16. Facility: St Charles Operations (Taft/Star) Union Carbide Corp

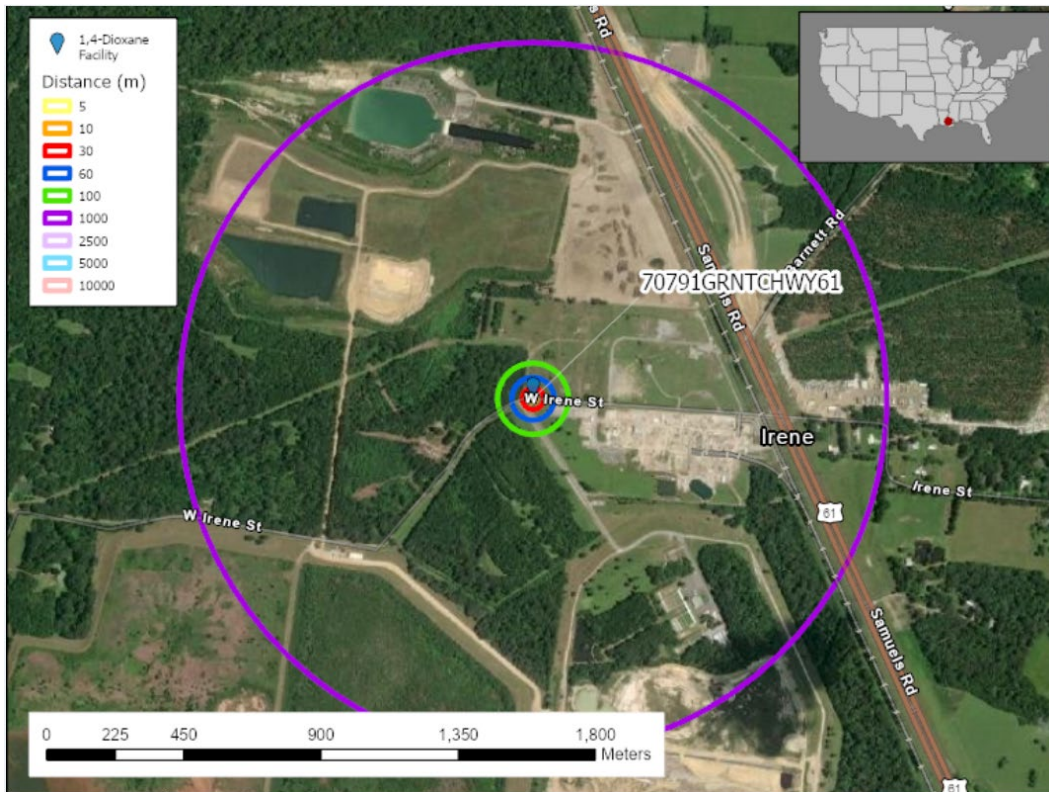
- **Location:** Hahnville, LA
- **Releases:** 1,719 kg/site-year (6% Fugitive, 94% Stack)
- **Methodology identified risk in 5-60 m**
- **Land use for 5-100 m:** Within facility.



- **Expected risk to fenceline communities? No**
- **Facility Summary: Risk is within facility of 100 m.**

17. Facility: Basf Corp

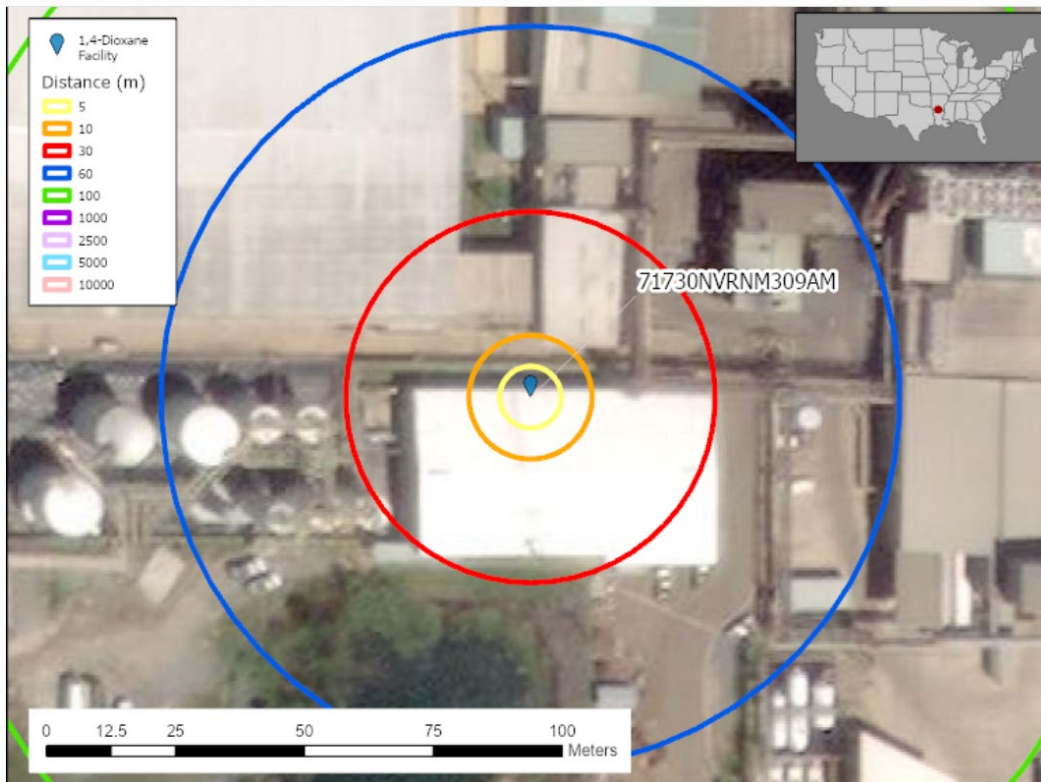
- **Location:** Zachary, LA
- **Releases:** 1,443 kg/site-year (100% Fugitive)
- **Methodology identified risk in 5-100 m**
- **Land use for 5-1,000 m:** Other industrial.



- **Expected risk to fenceline communities?** Yes
- **Facility Summary:** Risk to other industrial workers within facility of 1,000 m.

18. **Facility:** Clean Harbors El Dorado LLC

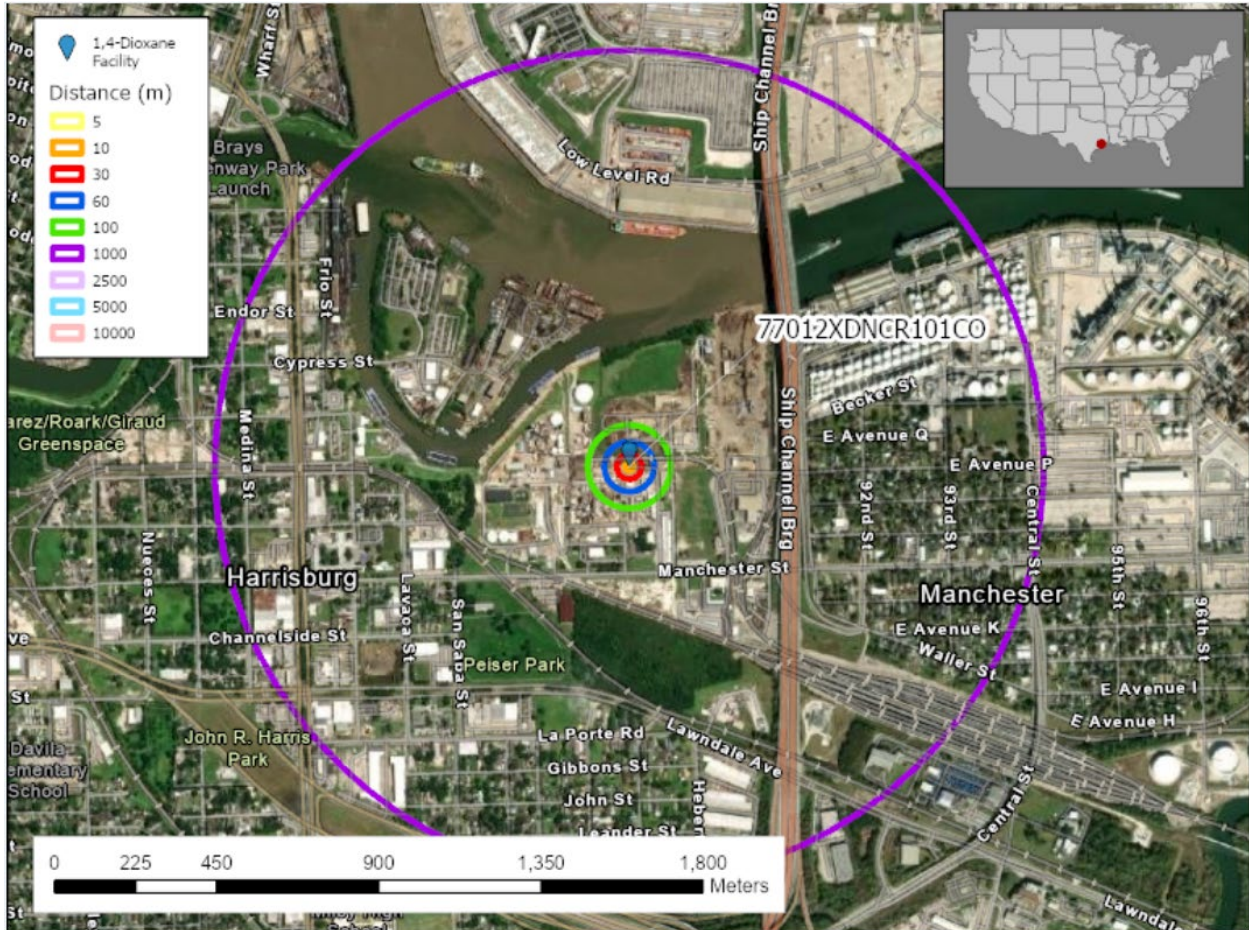
- **Location:** El Dorado, AR
- **Releases:** 59.53 kg/site-year (98% Fugitive, 2% Stack)
- **Methodology identified risk in 5-30 m**
- **Land use for 5-60 m:** Within facility.



- **Expected risk to fenceline communities?** No
- **Facility Summary:** Risk is within facility of 60 m.

19. Facility: Huntsman International LLC

- **Location:** Houston, TX
- **Releases:** 813 kg/site-year (45% Fugitive, 55% Stack)
- **Methodology identified risk in 5-100 m**
- **Land use for 5-1,000 m:** Residential, other industrial, and commercial. Parks

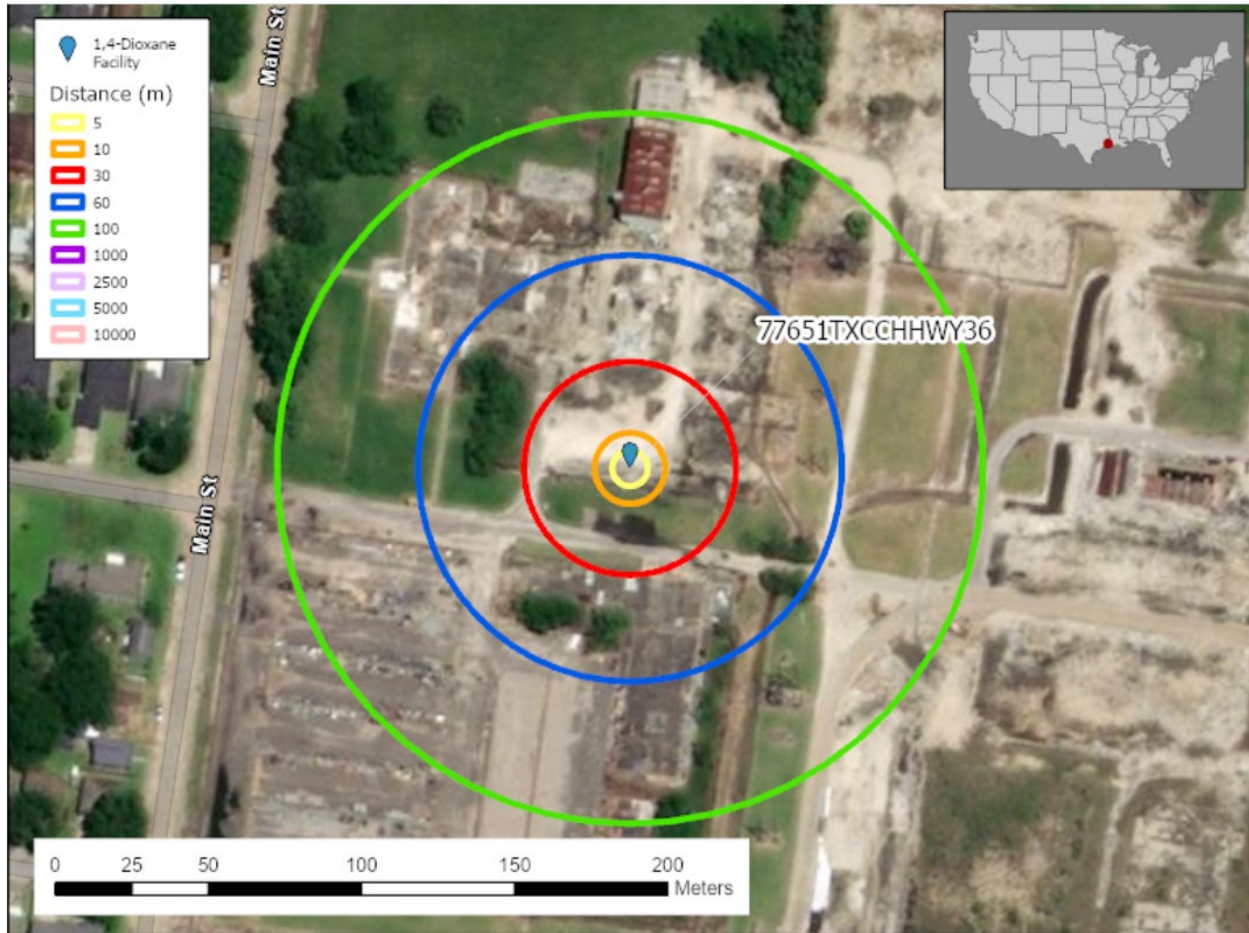


- **Expected risk to fenceline communities?** Yes
- **Facility Summary:** Risk to residents, other industrial workers, and commercial businesses within 1,000 m.

20. Facility: Huntsman Petrochemical LLC Port Neches Facility

- **Location:** Port Neches, TX
- **Releases:** 165 kg/site-year (85% Fugitive, 15% Stack)
- **Methodology identified risk in 5-60 m**

- Land use for 5-100 m: Within facility



- Expected risk to fenceline communities? No
- Facility Summary: Risk is within facility of 100 m.

21. **Facility:** Union Carbide Corp Seadrift Plant

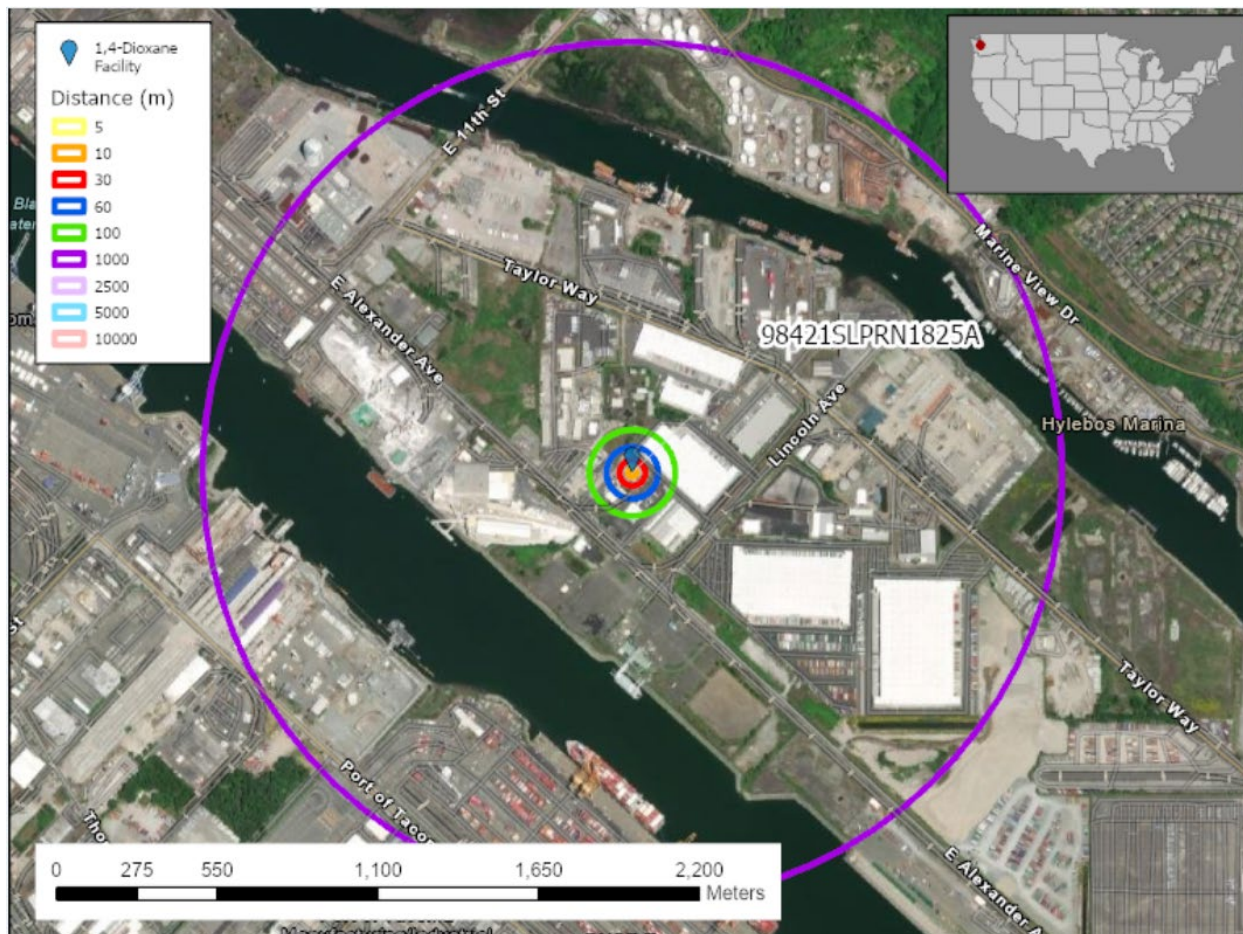
- Location: Seadrift, TX
- Releases: 4,615 kg/site-year (3% Fugitive, 97% Stack)
- Methodology identified risk in 5-100 m
- Land use for 5-1,000 m: Within facility



- **Expected risk to fenceline communities?** No
- **Facility Summary:** Risk is within facility of 1,000 m.

22. **Facility:** Emerald Services Inc

- **Location:** Tacoma, WA
- **Releases:** 753 kg/site-year (64% Fugitive, 36% Stack)
- **Methodology identified risk in 5-100 m**
- **Land use for 5-1,000 m:** Other industrial.



- **Expected risk to fence line communities? Yes**
- **Facility Summary: Risk to other industrial workers within 1,000 m.**