

## EJScreen Report (Version 2.11)

County: Utah, UTAH, EPA Region 8

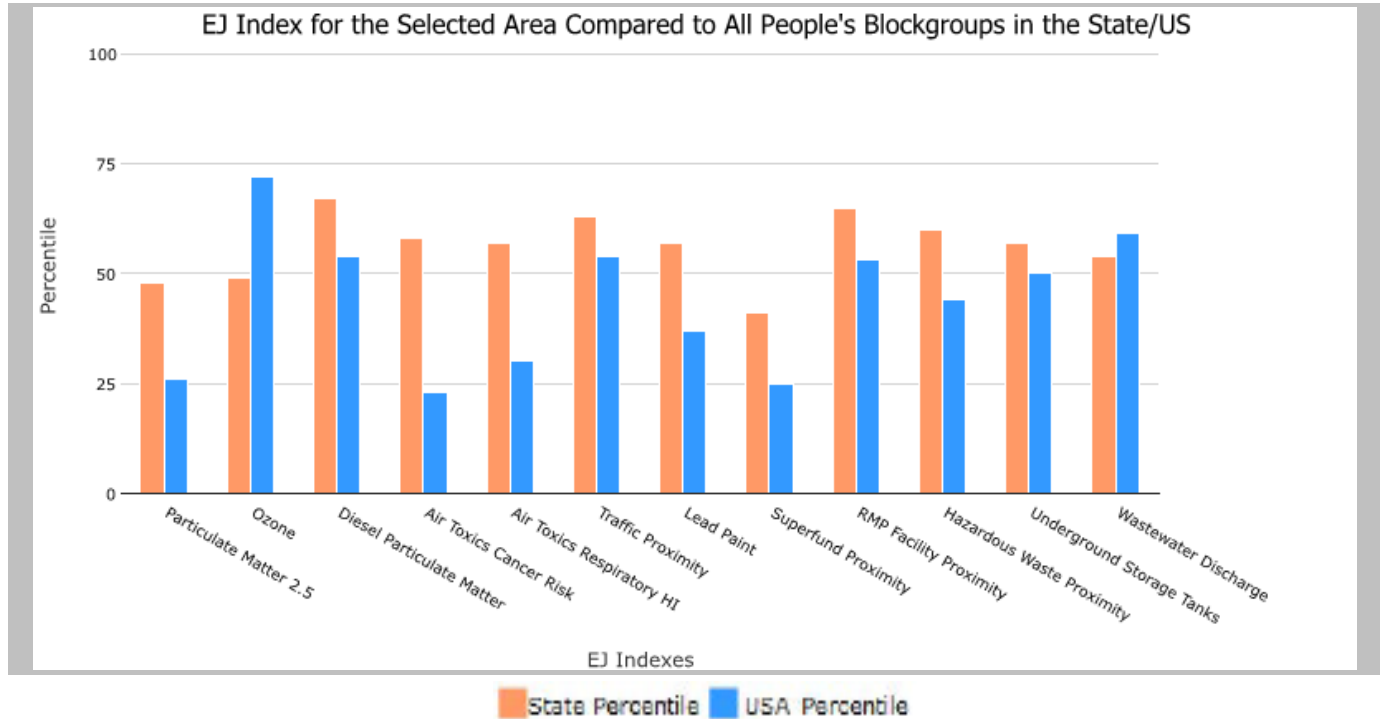
Approximate Population: 621,506

Input Area (sq. miles): 2144.21

Utah County (The study area contains 14 blockgroup(s) with zero population.)

Selected Variables	State Percentile	USA Percentile
<b>Environmental Justice Indexes</b>		
Particulate Matter 2.5 EJ index	48	26
Ozone EJ index	49	72
Diesel Particulate Matter EJ index*	67	54
Air Toxics Cancer Risk EJ index*	58	23
Air Toxics Respiratory HI EJ index*	57	30
Traffic Proximity EJ index	63	54
Lead Paint EJ index	57	37
Superfund Proximity EJ index	41	25
RMP Facility Proximity EJ index	65	53
Hazardous Waste Proximity EJ index	60	44
Underground Storage Tanks EJ index	57	50
Wastewater Discharge EJ index	54	59

EJ Indexes - The EJ indexes help users screen for potential EJ concerns. To do this, the EJ index combines data on low income and people of color populations with a single environmental indicator.



\*Diesel particular matter, air toxics cancer risk, and air toxics respiratory hazard index are from the EPA's Air Toxics Data Update, which is the Agency's ongoing, comprehensive evaluation of air toxics in the United States. This effort aims to prioritize air toxics, emission sources, and locations of interest for further study. It is important to remember that the air toxics data presented here provide broad estimates of health risks over geographic areas of the country, not definitive risks to specific individuals or locations. Cancer risks and hazard indices from the Air Toxics Data Update are reported to one significant figure and any additional significant figures here are due to rounding. More information on the Air Toxics Data Update can be found at: <https://www.epa.gov/haps/air-toxics-data-update>.

# EJScreen Report (Version 2.11)

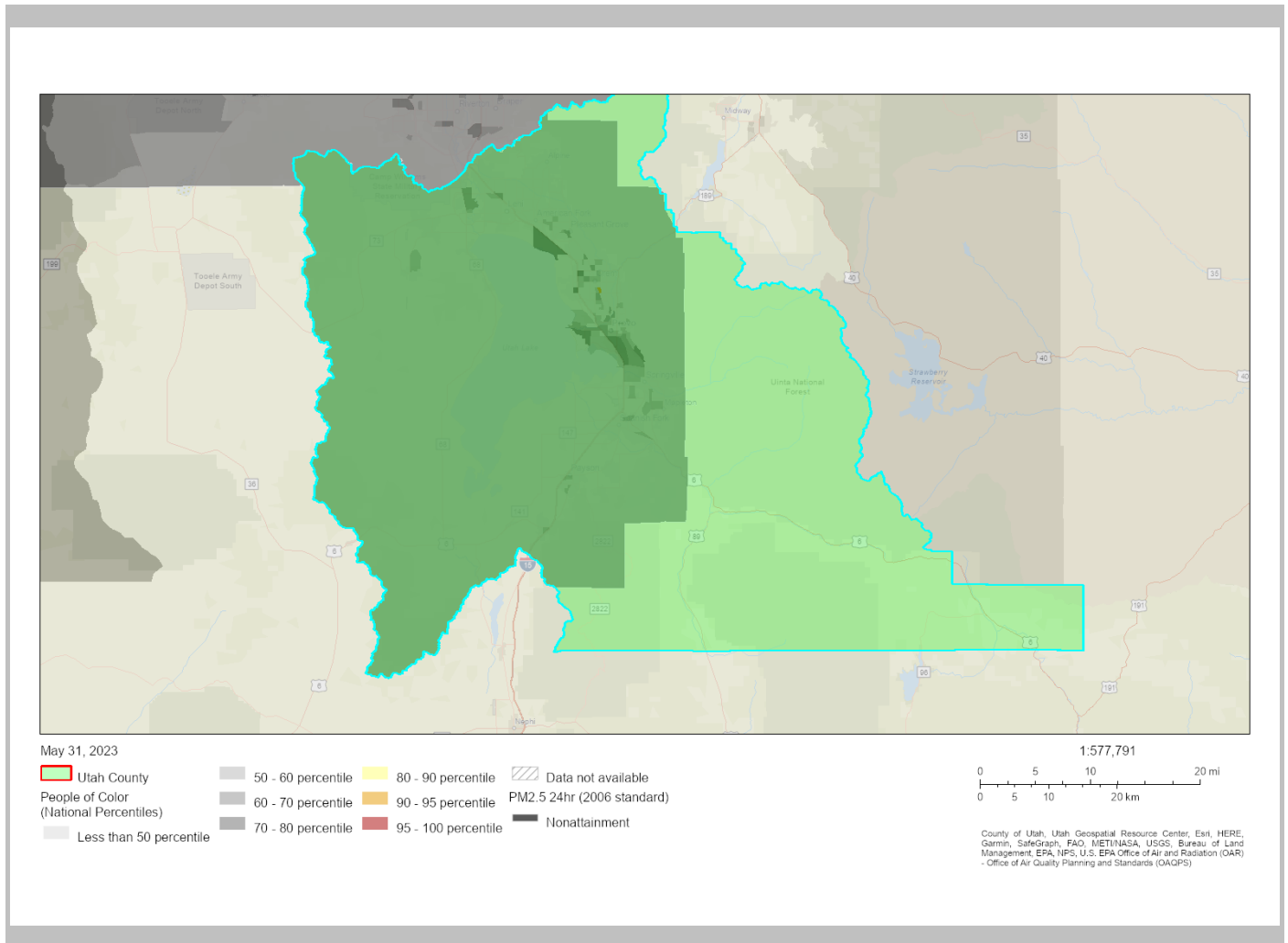


County: Utah, UTAH, EPA Region 8

Approximate Population: 621,506

Input Area (sq. miles): 2144.21

Utah County (The study area contains 14 blockgroup(s) with zero population.)



Sites reporting to EPA	
Superfund NPL	0
Hazardous Waste Treatment, Storage, and Disposal Facilities (TSDF)	11

## EJScreen Report (Version 2.11)

County: Utah, UTAH, EPA Region 8

Approximate Population: 621,506

Input Area (sq. miles): 2144.21

Utah County (The study area contains 14 blockgroup(s) with zero population.)

Selected Variables	Value	State Avg.	%ile in State	USA Avg.	%ile in USA
<b>Pollution and Sources</b>					
Particulate Matter 2.5 ( $\mu\text{g}/\text{m}^3$ )	7.44	7.53	26	8.67	20
Ozone (ppb)	57.6	57.7	31	42.5	96
Diesel Particulate Matter* ( $\mu\text{g}/\text{m}^3$ )	0.27	0.242	57	0.294	50-60th
Air Toxics Cancer Risk* (lifetime risk per million)	20	20	78	28	<50th
Air Toxics Respiratory HI*	0.26	0.29	63	0.36	<50th
Traffic Proximity (daily traffic count/distance to road)	770	720	73	760	76
Lead Paint (% Pre-1960 Housing)	0.12	0.17	57	0.27	38
Superfund Proximity (site count/km distance)	0.025	0.18	31	0.13	23
RMP Facility Proximity (facility count/km distance)	0.64	0.6	68	0.77	65
Hazardous Waste Proximity (facility count/km distance)	0.53	0.91	52	2.2	45
Underground Storage Tanks (count/km <sup>2</sup> )	1.6	2.3	58	3.9	55
Wastewater Discharge (toxicity-weighted concentration/m distance)	35	16	94	12	98
<b>Socioeconomic Indicators</b>					
Demographic Index	23%	24%	56	35%	39
Supplemental Demographic Index	11%	11%	55	15%	40
People of Color	18%	22%	53	40%	36
Low Income	27%	25%	59	30%	49
Unemployment Rate	4%	4%	64	5%	49
Limited English Speaking Households	2%	2%	71	5%	61
Less Than High School Education	5%	7%	52	12%	33
Under Age 5	9%	8%	71	6%	82
Over Age 64	8%	11%	35	16%	18
Low Life Expectancy	15%	19%	15	20%	13

EJScreen is a screening tool for pre-decisional use only. It can help identify areas that may warrant additional consideration, analysis, or outreach. It does not provide a basis for decision-making, but it may help identify potential areas of EJ concern. Users should keep in mind that screening tools are subject to substantial uncertainty in their demographic and environmental data, particularly when looking at small geographic areas. Important caveats and uncertainties apply to this screening-level information, so it is essential to understand the limitations on appropriate interpretations and applications of these indicators. Please see EJScreen documentation for discussion of these issues before using reports. This screening tool does not provide data on every environmental impact and demographic factor that may be relevant to a particular location. EJScreen outputs should be supplemented with additional information and local knowledge before taking any action to address potential EJ concerns.

# EJScreen Report (Version 2.11)

County: Utah, UTAH, EPA Region 8

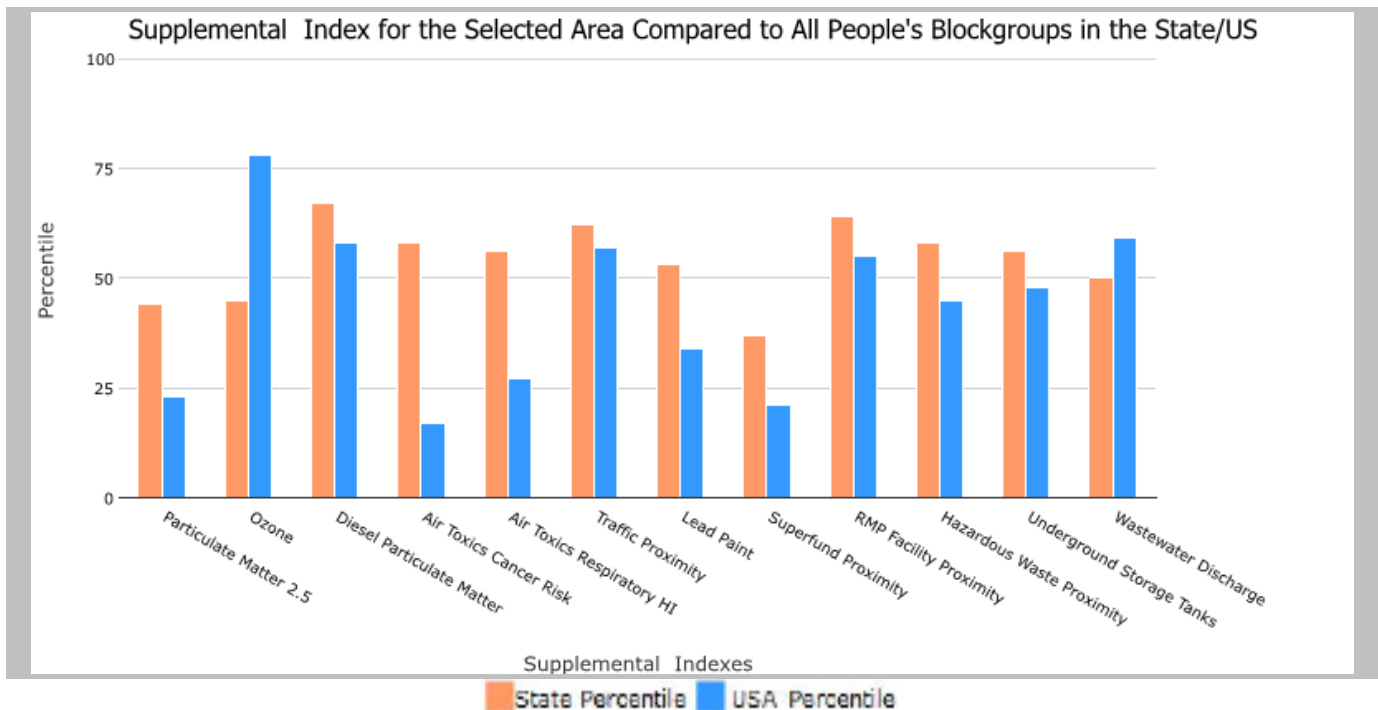
Approximate Population: 621,506

Input Area (sq. miles): 2144.21

Utah County (The study area contains 14 blockgroup(s) with zero population.)

Selected Variables	State Percentile	USA Percentile
<b>Supplemental Indexes</b>		
Particulate Matter 2.5 Supplemental Index	44	23
Ozone Supplemental Index	45	78
Diesel Particulate Matter Supplemental Index*	67	58
Air Toxics Cancer Risk Supplemental Index*	58	17
Air Toxics Respiratory HI Supplemental Index*	56	27
Traffic Proximity Supplemental Index	62	57
Lead Paint Supplemental Index	53	34
Superfund Proximity Supplemental Index	37	21
RMP Facility Proximity Supplemental Index	64	55
Hazardous Waste Proximity Supplemental Index	58	45
Underground Storage Tanks Supplemental Index	56	48
Wastewater Discharge Supplemental Index	50	59

Supplemental Indexes - The supplemental indexes offer a different perspective on community-level vulnerability. They combine data on low-income, limited English speaking, less than high school education, unemployed, and low life expectancy populations with a single environmental indicator.



This report shows the values for environmental and demographic indicators, EJScreen indexes, and supplemental indexes. It shows environmental and demographic raw data (e.g., the estimated concentration of ozone in the air), and also shows what percentile each raw data value represents. These percentiles provide perspective on how the selected block group or buffer area compares to the entire state, EPA region, or nation. For example, if a given location is at the 95th percentile nationwide, this means that only 5 percent of the US population has a higher block group value than the average person in the location being analyzed. The years for which the data are available, and the methods used, vary across these indicators. Important caveats and uncertainties apply to this screening-level information, so it is essential to understand the limitations on appropriate interpretations and applications of these indicators. Please see EJScreen documentation for discussion of these issues before using reports. For additional information, see: [www.epa.gov/environmentaljustice](http://www.epa.gov/environmentaljustice).