



EJScreen Community Report

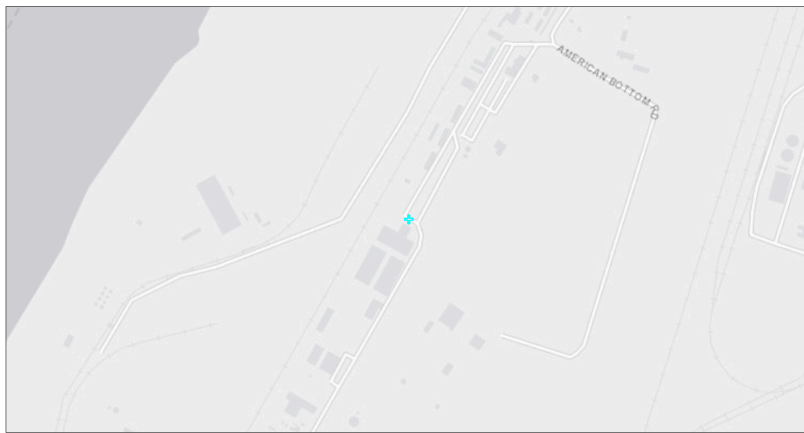
This report provides environmental and socioeconomic information for user-defined areas, and combines that data into environmental justice and supplemental indexes.

Sauget, IL

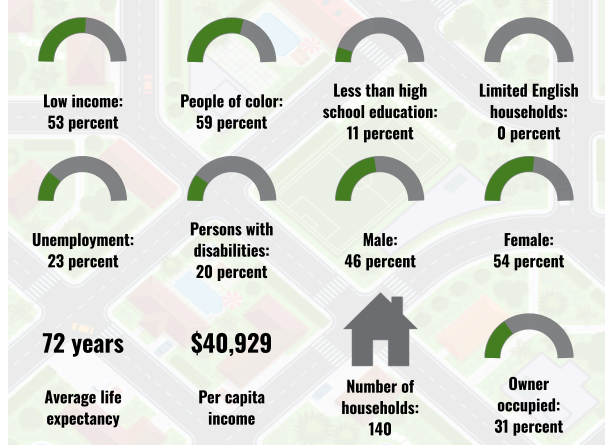
1 mile Ring Centered at 38.594837,-90.185072

Population: 323

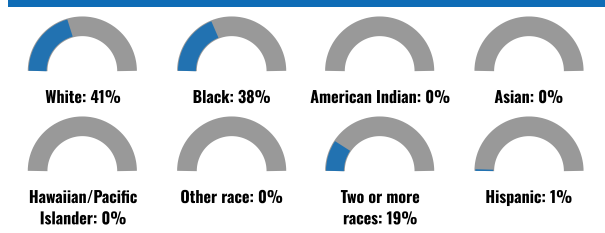
Area in square miles: 3.14



COMMUNITY INFORMATION



BREAKDOWN BY RACE



BREAKDOWN BY AGE



LIMITED ENGLISH SPEAKING BREAKDOWN



LANGUAGES SPOKEN AT HOME

LANGUAGE	PERCENT
English	96%
Spanish	2%
Other Indo-European	1%
Other and Unspecified	1%
Total Non-English	4%

Notes: Numbers may not sum to totals due to rounding. Hispanic population can be of any race. Source: U.S. Census Bureau American Community Survey (ACS) 2018-2022. Life expectancy data comes from the Centers for Disease Control.

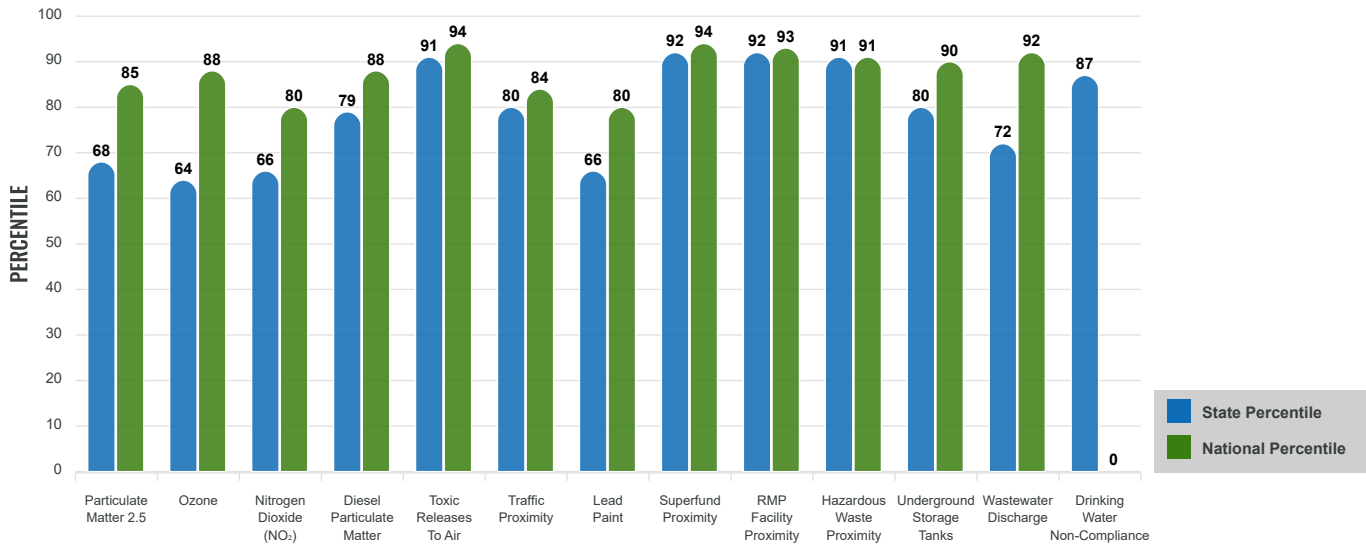
Environmental Justice & Supplemental Indexes

The environmental justice and supplemental indexes are a combination of environmental and socioeconomic information. There are thirteen EJ indexes and supplemental indexes in EJScreen reflecting the 13 environmental indicators. The indexes for a selected area are compared to those for all other locations in the state or nation. For more information and calculation details on the EJ and supplemental indexes, please visit the [EJScreen website](#).

EJ INDEXES

The EJ indexes help users screen for potential EJ concerns. To do this, the EJ index combines data on low income and people of color populations with a single environmental indicator.

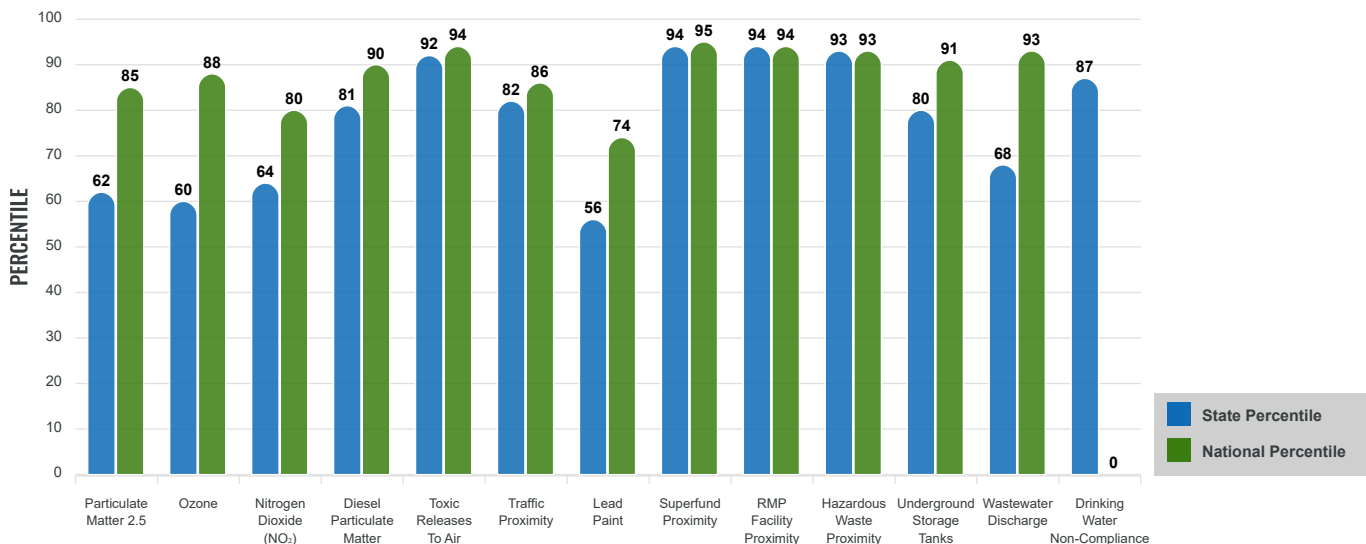
EJ INDEXES FOR THE SELECTED LOCATION



SUPPLEMENTAL INDEXES

The supplemental indexes offer a different perspective on community-level vulnerability. They combine data on percent low-income, percent linguistically isolated, percent less than high school education, percent unemployed, and low life expectancy with a single environmental indicator.

SUPPLEMENTAL INDEXES FOR THE SELECTED LOCATION



These percentiles provide perspective on how the selected block group or buffer area compares to the entire state or nation.

Report for 1 mile Ring Centered at 38.594837,-90.185072

EJScreen Environmental and Socioeconomic Indicators Data

SELECTED VARIABLES	VALUE	STATE AVERAGE	PERCENTILE IN STATE	USA AVERAGE	PERCENTILE IN USA
ENVIRONMENTAL BURDEN INDICATORS					
Particulate Matter 2.5 (µg/m ³)	8.73	8.96	36	8.45	67
Ozone (ppb)	43.1	44.2	31	41	70
Nitrogen Dioxide (NO ₂) (ppbv)	8.8	10	39	7.8	63
Diesel Particulate Matter (µg/m ³)	0.289	0.245	66	0.191	82
Toxic Releases to Air (toxicity-weighted concentration)	10,000	6,000	88	4,600	93
Traffic Proximity (daily traffic count/distance to road)	1,900,000	2,000,000	62	1,700,000	70
Lead Paint (% Pre-1960 Housing)	0.29	0.43	36	0.3	57
Superfund Proximity (site count/km distance)	6.9	0.44	99	0.39	98
RMP Facility Proximity (facility count/km distance)	5.6	1.1	99	0.57	99
Hazardous Waste Proximity (facility count/km distance)	8.2	3.5	89	3.5	87
Underground Storage Tanks (count/km ²)	7	8	62	3.6	84
Wastewater Discharge (toxicity-weighted concentration/m distance)	6500	31000	42	700000	86
Drinking Water Non-Compliance (points)	0.22	0.37	87	2.2	74
SOCIOECONOMIC INDICATORS					
Demographic Index USA	2.18	N/A	N/A	1.34	82
Supplemental Demographic Index USA	2.19	N/A	N/A	1.64	81
Demographic Index State	2.23	1.32	82	N/A	N/A
Supplemental Demographic Index State	2.05	1.41	83	N/A	N/A
People of Color	59%	39%	71	40%	71
Low Income	53%	28%	87	30%	84
Unemployment Rate	23%	6%	95	6%	97
Limited English Speaking Households	0%	4%	0	5%	0
Less Than High School Education	11%	10%	66	11%	62
Under Age 5	10%	6%	88	5%	87
Over Age 64	10%	17%	24	18%	24

*Diesel particulate matter index is from the EPA's Air Toxics Data Update, which is the Agency's ongoing, comprehensive evaluation of air toxics in the United States. This effort aims to prioritize air toxics, emission sources, and locations of interest for further study. It is important to remember that the air toxics data presented here provide broad estimates of health risks over geographic areas of the country, not definitive risks to specific individuals or locations. More information on the Air Toxics Data Update can be found at: <https://www.epa.gov/haps/air-toxics-data-update>.

Sites reporting to EPA within defined area:

Superfund	2
Hazardous Waste, Treatment, Storage, and Disposal Facilities	4
Water Dischargers	17
Air Pollution	36
Brownfields	0
Toxic Release Inventory	13

Other community features within defined area:

Schools	0
Hospitals	0
Places of Worship	0

Other environmental data:

Air Non-attainment	Yes
Impaired Waters	Yes

Selected location contains American Indian Reservation Lands*	No
Selected location contains a "Justice40 (CEJST)" disadvantaged community	Yes
Selected location contains an EPA IRA disadvantaged community	Yes

Report for 1 mile Ring Centered at 38.594837,-90.185072

EJScreen Environmental and Socioeconomic Indicators Data

HEALTH INDICATORS

INDICATOR	VALUE	STATE AVERAGE	STATE PERCENTILE	US AVERAGE	US PERCENTILE
Low Life Expectancy	25%	20%	88	20%	90
Heart Disease	6.1	5.5	62	5.8	57
Asthma	12.4	9.9	93	10.3	91
Cancer	5.5	6.4	30	6.4	28
Persons with Disabilities	17.9%	12.4%	83	13.7%	78

CLIMATE INDICATORS

INDICATOR	VALUE	STATE AVERAGE	STATE PERCENTILE	US AVERAGE	US PERCENTILE
Flood Risk	40%	11%	95	12%	94
Wildfire Risk	0%	0%	0	14%	0

CRITICAL SERVICE GAPS

INDICATOR	VALUE	STATE AVERAGE	STATE PERCENTILE	US AVERAGE	US PERCENTILE
Broadband Internet	25%	13%	86	13%	85
Lack of Health Insurance	6%	7%	49	9%	41
Housing Burden	Yes	N/A	N/A	N/A	N/A
Transportation Access Burden	Yes	N/A	N/A	N/A	N/A
Food Desert	Yes	N/A	N/A	N/A	N/A

Report for 1 mile Ring Centered at 38.594837,-90.185072
 Report produced July 10, 2024 using EJScreen Version 2.3