

South Central District Office
500 N. Hendricks
Hutchinson, KS 67504-0769



phone: 620-860-7400
fax: 620-663-1804
www.ksdot.gov

Calvin Reed, Secretary of Transportation

Laura Kelly, Governor

IMMEDIATE RELEASE

Oct. 14, 2024

For more information: Tim Potter

620-860-7389; mobile: 620-727-2278; Tim.Potter@ks.gov

Pavement-marking project set on U.S. 281 in Barton County

Work will begin soon on a U.S. 281 pavement-marking project in Barton County.

The Kansas Department of Transportation project will be on U.S. 281 from the Hoisington west city limits to the Barton/Russell county line, for a length of about 15 miles.

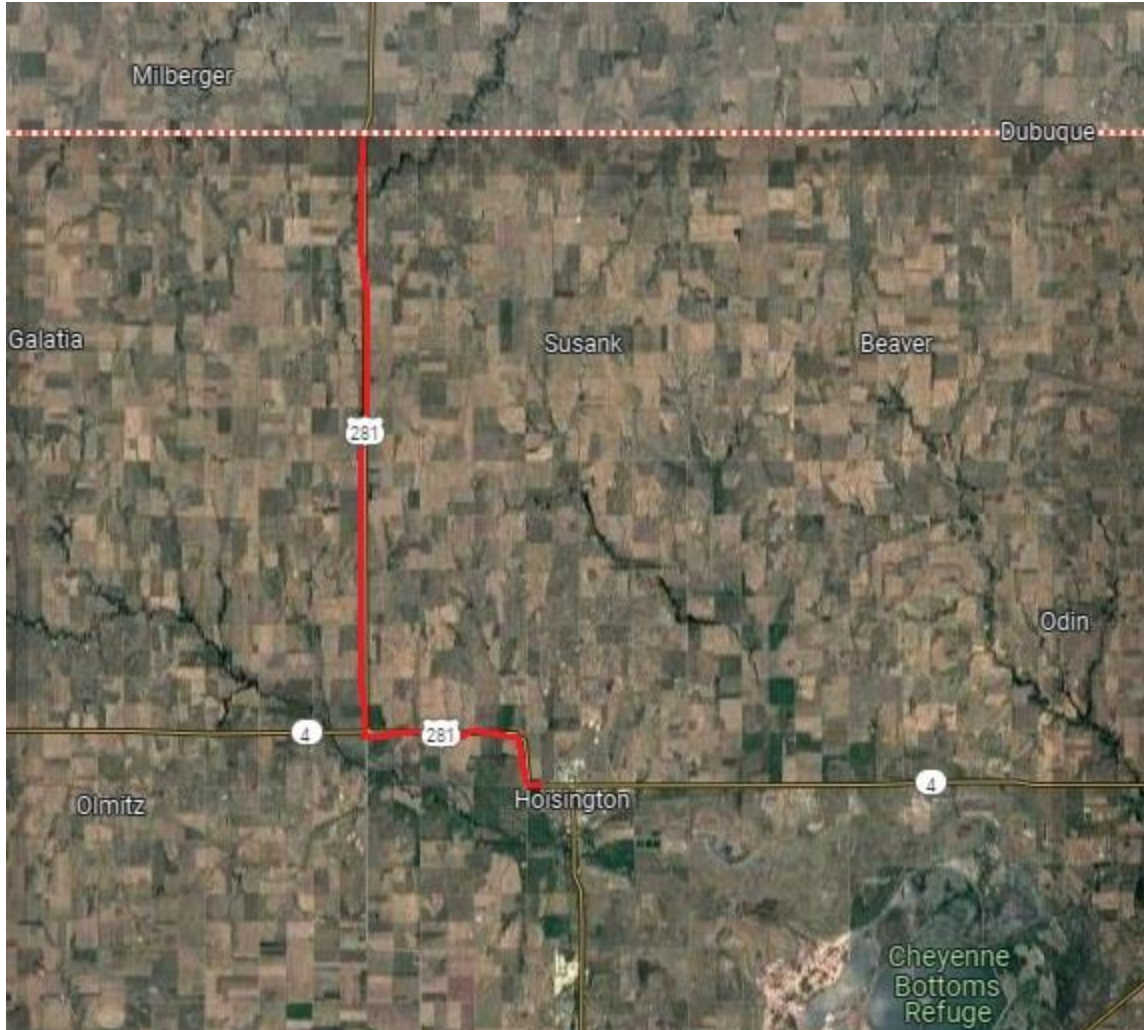
The work is expected to begin around Oct. 28 at the Barton/Russell county line and move south to Hoisington. The work is expected to be completed around Nov. 15.

During the work, traffic will be controlled by a pilot car and flaggers, and motorists should be prepared to slow down and stop and expect up to a 15-minute delay.

The map below shows the approximate project location, marked in red.

RoadSafe Traffic Systems Inc., of Chicago, is the primary contractor for the \$223,566 project.

For updated information on this and other KDOT highway projects and road conditions across the state, go to www.kandrive.gov.



###

This information can be made available in alternative accessible formats upon request.

For information about obtaining an alternative format, contact the KDOT Communications Division, 700 SW Harrison St., 2nd Fl West, Topeka, KS 66603-3745 or phone 785-296-3585 (Voice)/Hearing Impaired – 711.

Click below to connect to KDOT's Social Networks:

