

South Central District Office
500 N. Hendricks
Hutchinson, KS 67504-0769



phone: 620-860-7400
fax: 620-663-1804
www.ksdot.gov

Calvin Reed, Secretary of Transportation

Laura Kelly, Governor

IMMEDIATE RELEASE

Sept. 9, 2024

For more information: Tim Potter

620-860-7389; mobile: 620-727-2278; Tim.Potter@ks.gov

U.S. 166 work in Cowley, Sumner counties will begin soon

Two connected resurfacing projects, involving a milling and hot-mix-asphalt overlay, will start soon on U.S. 166 in Cowley and Sumner counties.

One of the Kansas Department of Transportation projects on U.S. 166 – in Cowley County - will be from the Sumner/Cowley county line to near the Arkansas River bridge just west of Arkansas City. The length is almost 5 miles.

The other KDOT project on U.S. 166 – in Sumner County -- will be from 450 feet east of Rock Road to the Sumner/Cowley county line. The length is almost 5 miles.

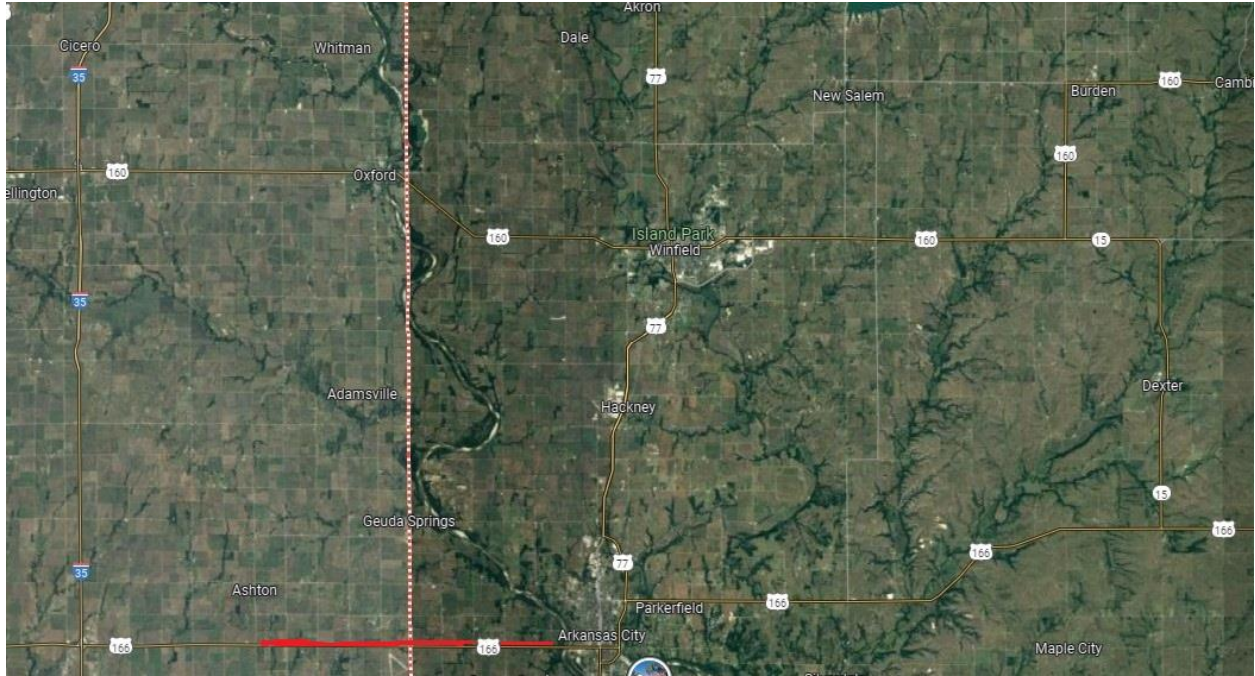
The work is expected to begin around Sept. 23 and be completed around Oct. 22.

During the work, traffic will be restricted to one lane and controlled by flaggers and a pilot car. Motorists should be prepared to stop and expect delays of up to 15 minutes.

The map below shows the approximate location of the combined projects, traced in red.

Pearson Construction, of Wichita, is the primary contractor for the \$1,546,167 project in Cowley County and the \$1,450,129 project in Sumner County.

For updated information on this and other KDOT highway projects and road conditions across the state, go to www.kandrive.gov.



###

This information can be made available in alternative accessible formats upon request.

For information about obtaining an alternative format, contact the KDOT Communications Division, 700 SW Harrison St., 2nd Fl West, Topeka, KS 66603-3745 or phone 785-296-3585 (Voice)/Hearing Impaired – 711.

Click below to connect to KDOT's Social Networks:

