

South Central District Office
500 N. Hendricks
Hutchinson, KS 67504-0769



phone: 620-860-7400
fax: 620-663-1804
www.ksdot.gov

Calvin Reed, Secretary of Transportation

Laura Kelly, Governor

IMMEDIATE RELEASE

Oct. 28, 2024

For more information: Tim Potter

620-860-7389; mobile: 620-727-2278; Tim.Potter@ks.gov

Crack repair set on U.S. 56 in Rice County, U.S. 183 in Rush County

Work will start soon on asphalt crack repair projects in Rice and Rush counties.

One of the Kansas Department of Transportation projects will be on U.S. 56 in Rice County, from the Lyons east city limits to the Rice/McPherson county line. The length is 13 miles.

The other KDOT project will be on U.S. 183 in Rush County, from the Pawnee/Rush county line to the south city limits of La Crosse. The length is 10 miles.

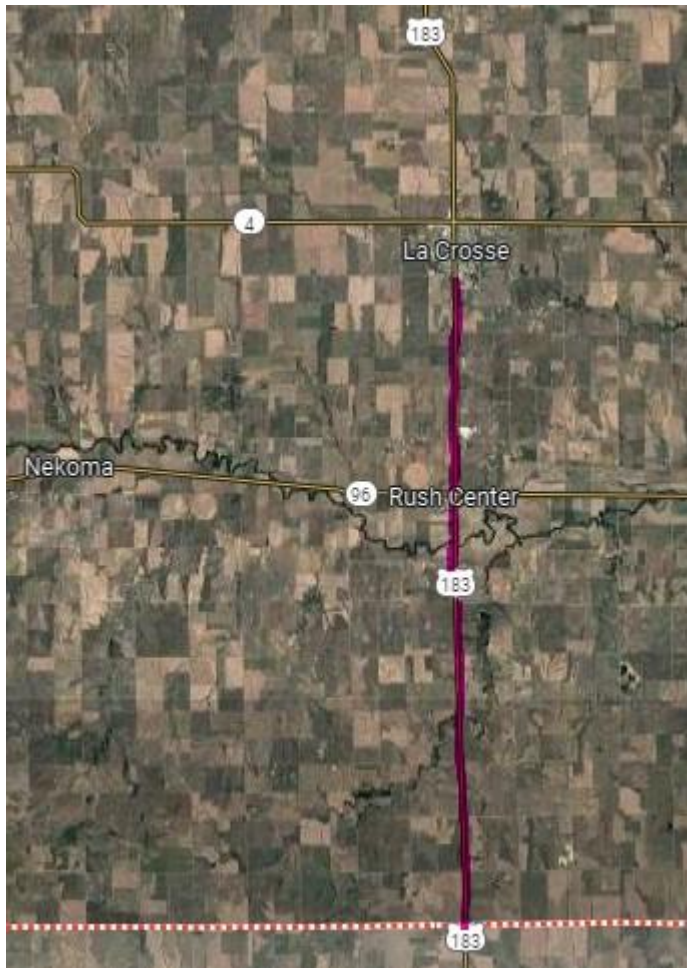
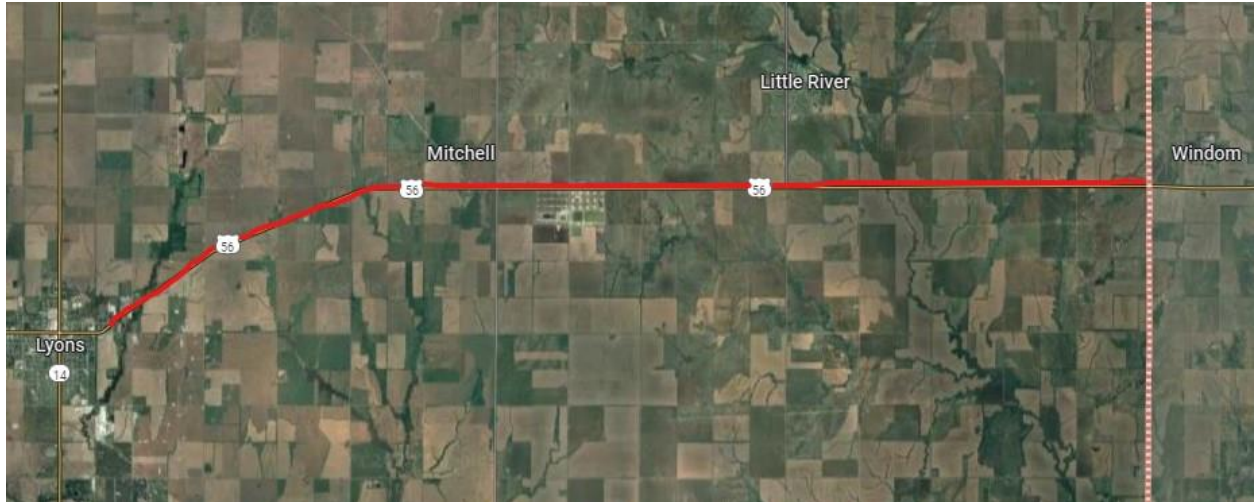
The work is expected to begin around Tuesday, Nov. 12, starting in Rice County, and be completed around Dec. 13.

During the work, traffic will be controlled by a pilot car and flaggers, and motorists should be prepared to slow down and stop and expect up to a 15-minute delay.

The maps below show the approximate project locations marked in red.

Pavement Pros, of McPherson, is the primary contractor for the \$135,974 project in Rice County and the \$81,052 project in Rush County.

For updated information on this and other KDOT highway projects and road conditions across the state, go to www.kandrive.gov.



###

This information can be made available in alternative accessible formats upon request.

For information about obtaining an alternative format, contact the KDOT Communications Division,
700 SW Harrison St., 2nd Fl West, Topeka, KS 66603-3745 or phone 785-296-3585 (Voice)/Hearing Impaired – 711.

Click below to connect to KDOT's Social Networks:

