

Northeast District Office
121 S.W. 21st Street
Topeka, KS 66612-1429



phone: 785-296-3881
fax: 785-296-3720
www.ksdot.gov

Calvin Reed, Secretary of Transportation

Laura Kelly, Governor

IMMEDIATE RELEASE

Aug. 7, 2024

For more information:

Kate Craft
Kate.Craft@ks.gov

K-7 bridge replacement underway in Doniphan County

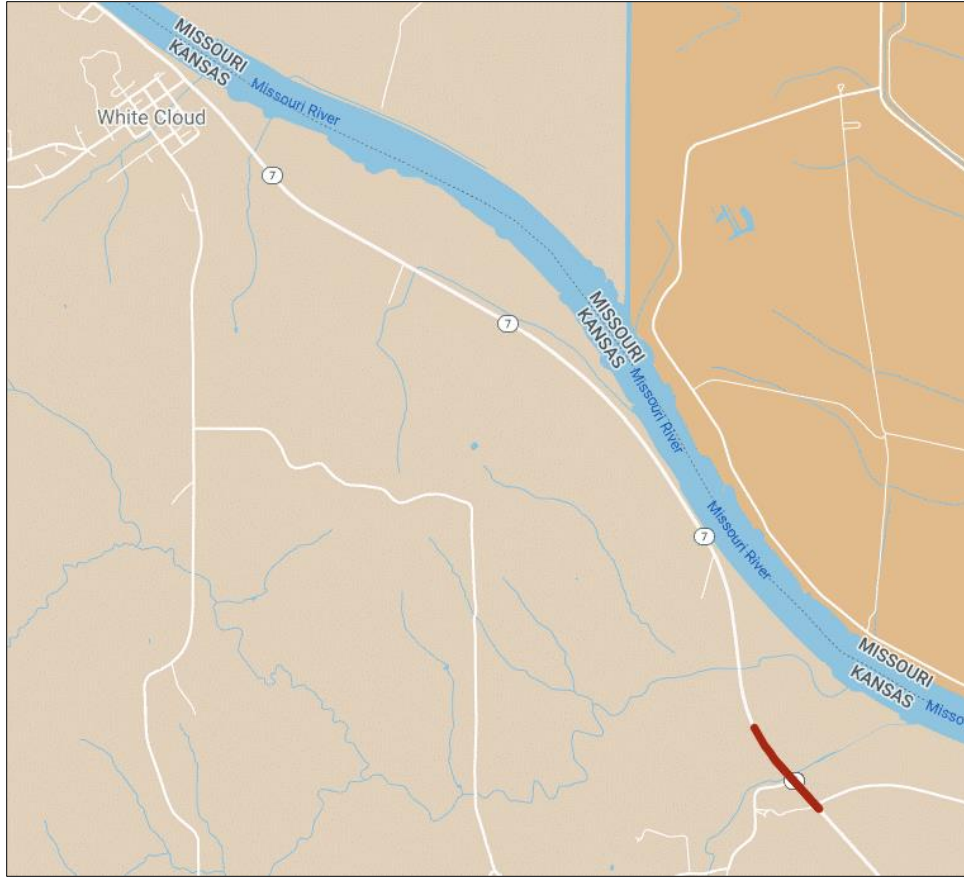
The Kansas Department of Transportation has started work on a bridge replacement project on K-7 in Doniphan County. The Mill Creek bridge is approximately 3.5 miles south of White Cloud.

Denmark Road has been closed at K-7 and is expected to reopen by late September. Other traffic impacts should be minimal through the end of this year, with most project activity taking place along the roadway's shoulder.

Work will occur Monday through Friday during daylight hours and is expected to be complete by August 2025, conditions permitting.

A.M. Cohron & Son, Inc., of Atlantic, Iowa, is the \$3.6 million project's prime contractor.

KDOT urges all motorists to be alert and obey the warning signs when approaching and driving through a highway work zone. To stay aware of highway construction projects across Kansas, go to www.kandrive.org or call 5-1-1.



###

This information can be made available in alternative accessible formats upon request. For information about obtaining an alternative format, contact the KDOT Division of Communications, 700 SW Harrison St., 2nd Fl. West, Topeka, KS 66603-3745 or phone 785-296-3585 (Voice)/Hearing Impaired – 711.

Click below to connect to KDOT's Social Networks:

