



7400 West 129th Street, Suite 100 | Overland Park, KS 66213 | www.69express.org | info@69express.org



IMMEDIATE RELEASE

Aug. 21, 2024

For more information:

Delaney Tholen

785-817-9365

delaney.tholen@ks.gov

119th Street at U.S. 69 will close Friday for 60 days in Overland Park

Ramps at the 119th Street and U.S. 69 interchange will be **fully closed to traffic** for approximately 60 days beginning at 7 p.m. on Friday, Aug. 23, in Johnson County.

Eastbound and westbound 119th Street will be closed from Grant Street to Farley/Three Lakes Parkway. Grant Street access to 119th Street also will be **fully closed** at the intersection of Grant Street/119th Terrace throughout the 60-day closure.

All ramps and 119th Street lanes are scheduled to reopen by the end of October. These closures are necessary for safe and expedited reconstruction of the 119th Street/U.S. 69 interchange, as part of the 69Express project.

During the closure, U.S. 69 traffic wishing to access 119th Street will be directed to detour as follows:

Southbound U.S. 69 to eastbound 119th Street:

- Exit southbound U.S. 69 at 135th Street and turn right
- Take 135th Street west to Antioch Road and turn right
- Take Antioch Road north to 119th Street and turn right
- Proceed east on 119th Street

Southbound U.S. 69 to westbound 119th Street:

- Exit southbound U.S. 69 at 135th Street and turn right
- Take 135th Street west to Quivira Road and turn right
- Take Quivira Road north to 119th Street and turn left
- Proceed west on 119th Street

Northbound U.S. 69 to eastbound 119th Street:

- Exit northbound U.S. 69 at College Boulevard and turn right
- Take College Boulevard east to Antioch Road and turn right

- Take Antioch Road south to 119th street and turn left
- Proceed east on 119th Street

Northbound U.S. 69 to westbound 119th Street:

- Exit northbound U.S. 69 at College Boulevard and turn left
- Take College Boulevard west to Quivira Road and turn left
- Take Quivira Road south to 119th Street and turn right
- Proceed west on 119th Street

During the closure, 119th Street traffic wishing to access U.S. 69 will be directed to detour as follows:

Eastbound 119th Street to southbound U.S. 69

- Head east on 119th Street to Quivira Road
- Turn right on Quivira Road
- Head south on Quivira Road to 135th Street
- Turn left at 135th Street and head east
- Turn right onto the 135th Street to southbound U.S. 69 entrance ramp

Westbound 119th Street to southbound U.S. 69

- Head west on 119th Street to Antioch Road
- Turn left on Antioch Road
- Head south on Antioch Road to 135th Street
- Turn left at 135th Street
- Turn right onto the 135th Street to southbound U.S. 69 entrance ramp

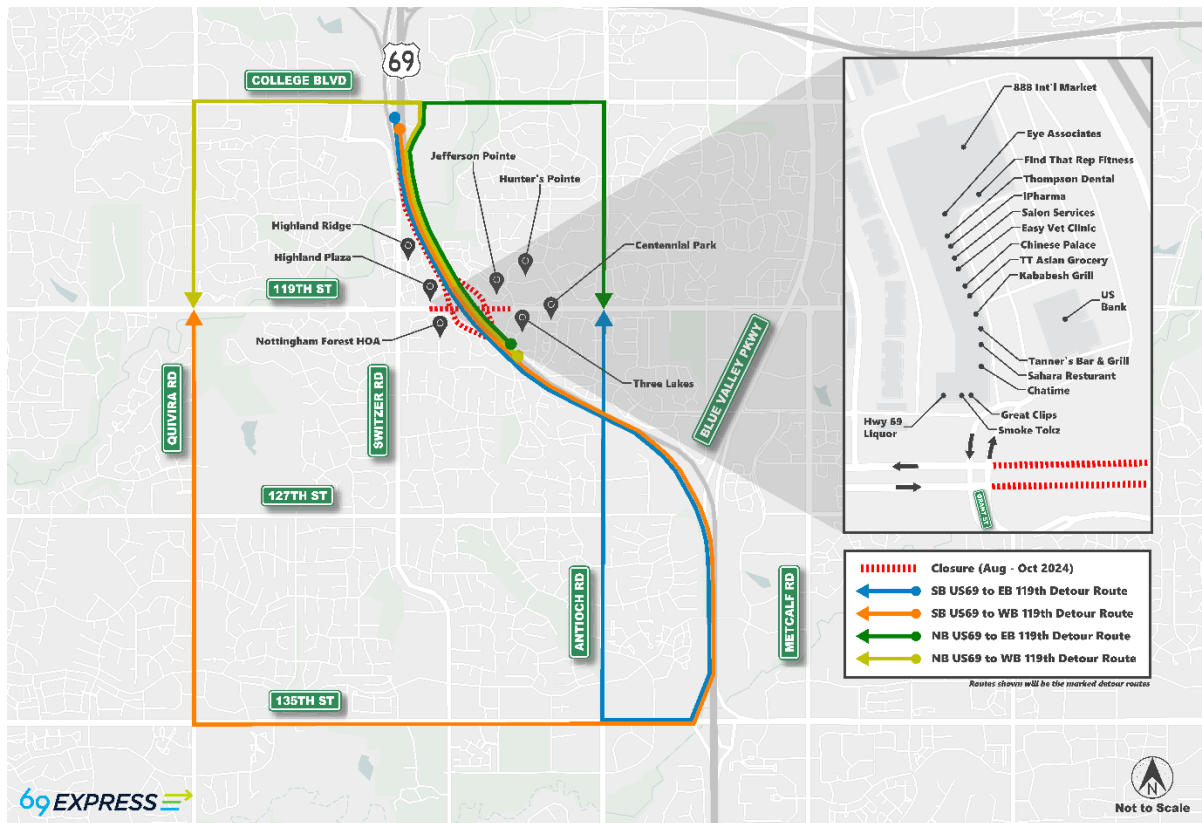
Eastbound 119th Street to northbound U.S. 69

- Head east on 119th Street to Quivira Road
- Turn left on Quivira Road
- Head north on Quivira Road to College Boulevard
- Turn right on College Boulevard and head east
- Turn right onto the College Boulevard to northbound U.S. 69 entrance ramp

Westbound 119th Street to northbound U.S. 69

- Head west on 119th Street to Antioch Road
- Turn right onto Antioch Road
- Head north on Antioch Road to College Boulevard
- Turn left at College Boulevard and head west
- Merge onto the College Boulevard to northbound U.S. 69 entrance ramp

Map below shows closure location marked in red and U.S. 69/119th Street detour routes marked in blue, orange, green and yellow.



During the closure, 119th Street traffic wishing to continue on 119th Street will be directed to detour as follows:

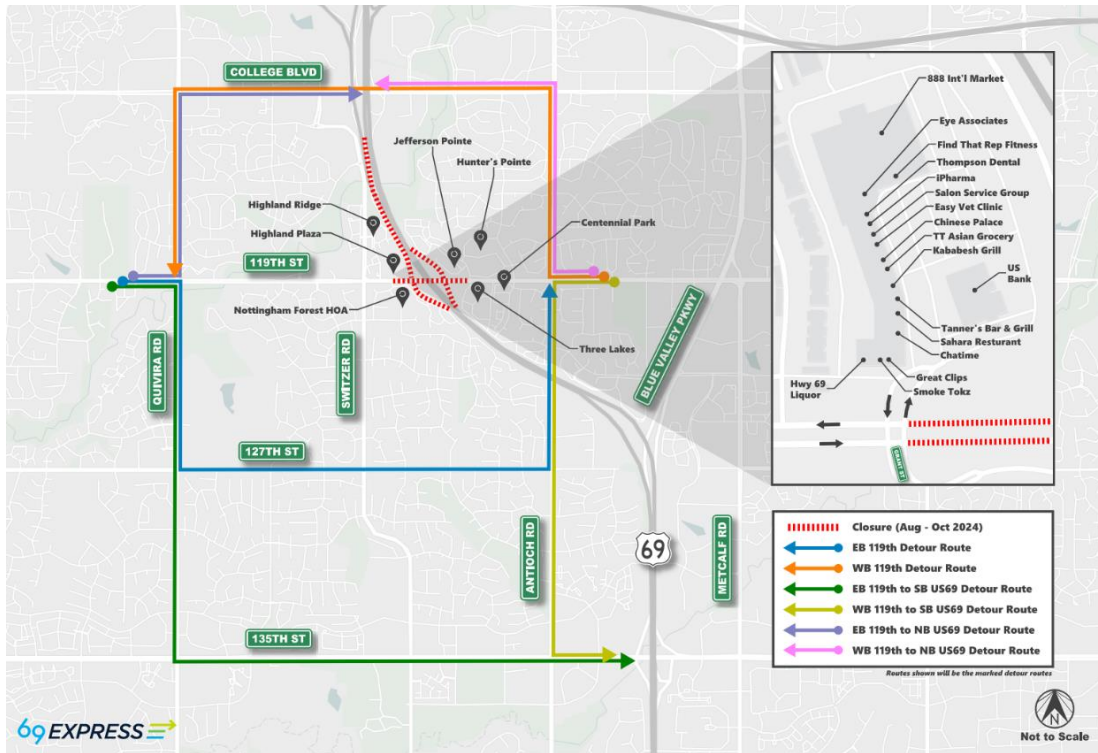
Eastbound 119th Street through traffic

- Head east on 119th Street to Quivira Road
- Turn right on Quivira Road
- Head south on Quivira Road to 127th Street and turn left
- Take 127th Street to Antioch Road and turn left
- Take Antioch Road north to 119th Street and turn right
- Continue east on 119th Street

Westbound 119th Street through traffic

- Head west on 119th Street to Antioch Road
- Turn right on Antioch Road
- Take Antioch Road north to College Boulevard and turn left
- Take College Boulevard west to Quivira Road and turn left
- Take Quivira south to 119th Street and turn right
- Continue west on 119th Street

Map below shows closure location marked in red and 119th Street through traffic detour routes marked in blue, orange, green, yellow, purple and pink.



The Highland Plaza shopping center will remain open and accessible from the west during the 119th Street closure period. The inset map in the large map above shows where drivers can access the retail area entrance. Highland Plaza merchant locations also are depicted on the inset map.

More information on the 119th Street closures can be found on the [project website](#).

All work is weather dependent and subject to change. These temporary closures are part of the Kansas Department of Transportation’s U.S. 69 Expansion Project (69Express).

The 69Express project includes reconstruction of U.S. 69, widening the highway with added express lanes – one in each direction between 151st and 103rd Streets – and interchange improvements at U.S. 69/167th Street in Overland Park.

All current 69Express construction and closure information is available on the project website, www.69express.org. For additional information, members of the public can get regular construction updates on the project [Facebook](#) and [X](#) (formerly Twitter) pages and by [subscribing to the project newsletter](#) and [signing up for text alerts](#).

###

This information can be made available in alternative accessible formats upon request. For information about obtaining an alternative format, contact the KDOT Division of Communications, 700 SW Harrison Street, 2nd Fl. West, Topeka, KS 66603-3745 or phone 785-296-3585 (Voice) / 7-1-1 (Hearing Impaired).

Click below to connect to KDOT’s Social Networks:

