

South Central District Office  
500 N. Hendricks  
Hutchinson, KS 67504-0769



phone: 620-860-7400  
fax: 620-663-1804  
[www.ksdot.gov](http://www.ksdot.gov)

Calvin Reed, Secretary of Transportation

Laura Kelly, Governor

IMMEDIATE RELEASE

June 26, 2024

For more information: Tim Potter

620-860-7389; mobile: 620-727-2278; [Tim.Potter@ks.gov](mailto:Tim.Potter@ks.gov)

## **Old K-14 resurfacing is set in Reno, Rice counties**

Resurfacing will start soon on three sections of Old K-14 in Reno and Rice counties.

The Kansas Department of Transportation project involves a mill and overlay in Reno County from the south city limits of Nickerson to the south tie-in at Dean Road. This portion of the project has been delayed.

That Reno County work is expected to begin around July 8 and be completed around July 12.

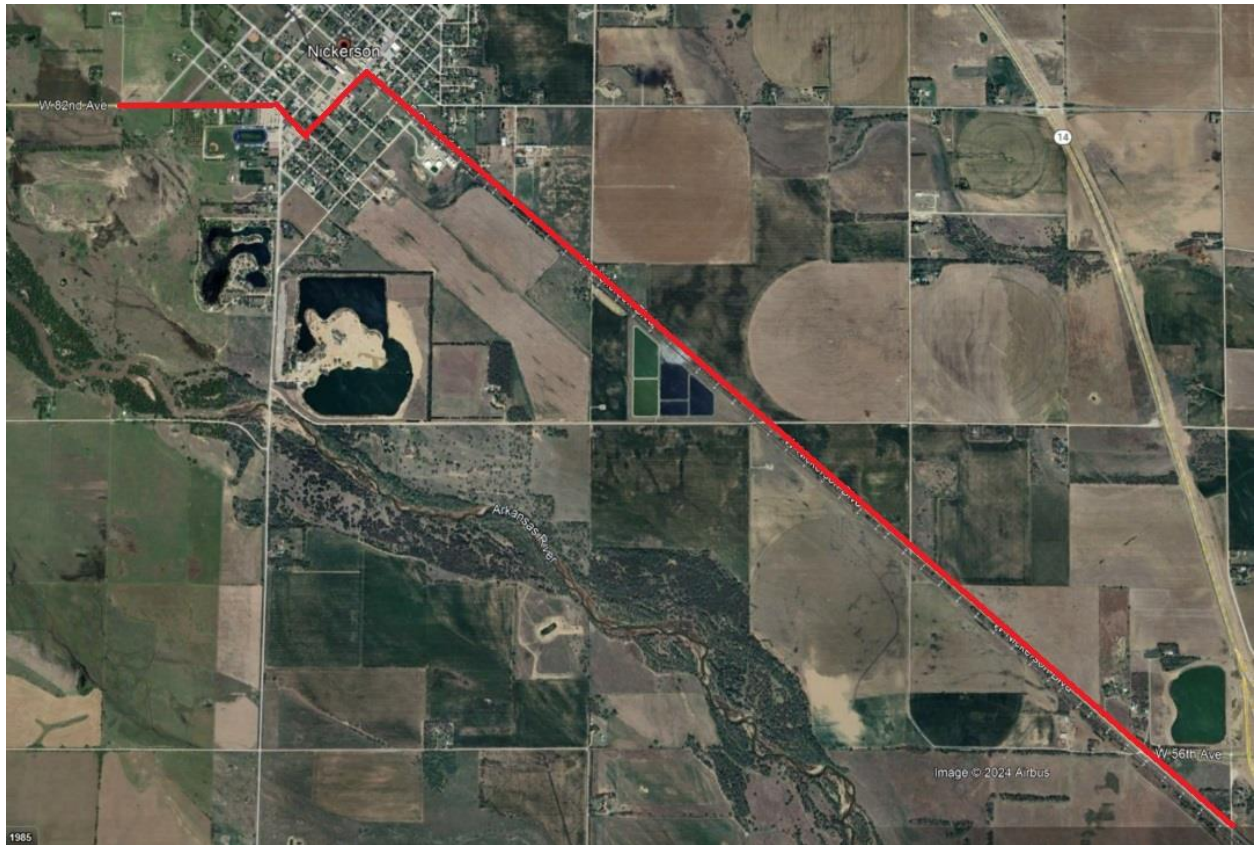
During all three phases of the work, traffic will be controlled by a pilot car and flaggers, so motorists should be prepared to stop and expect delays of up to 15 minutes.

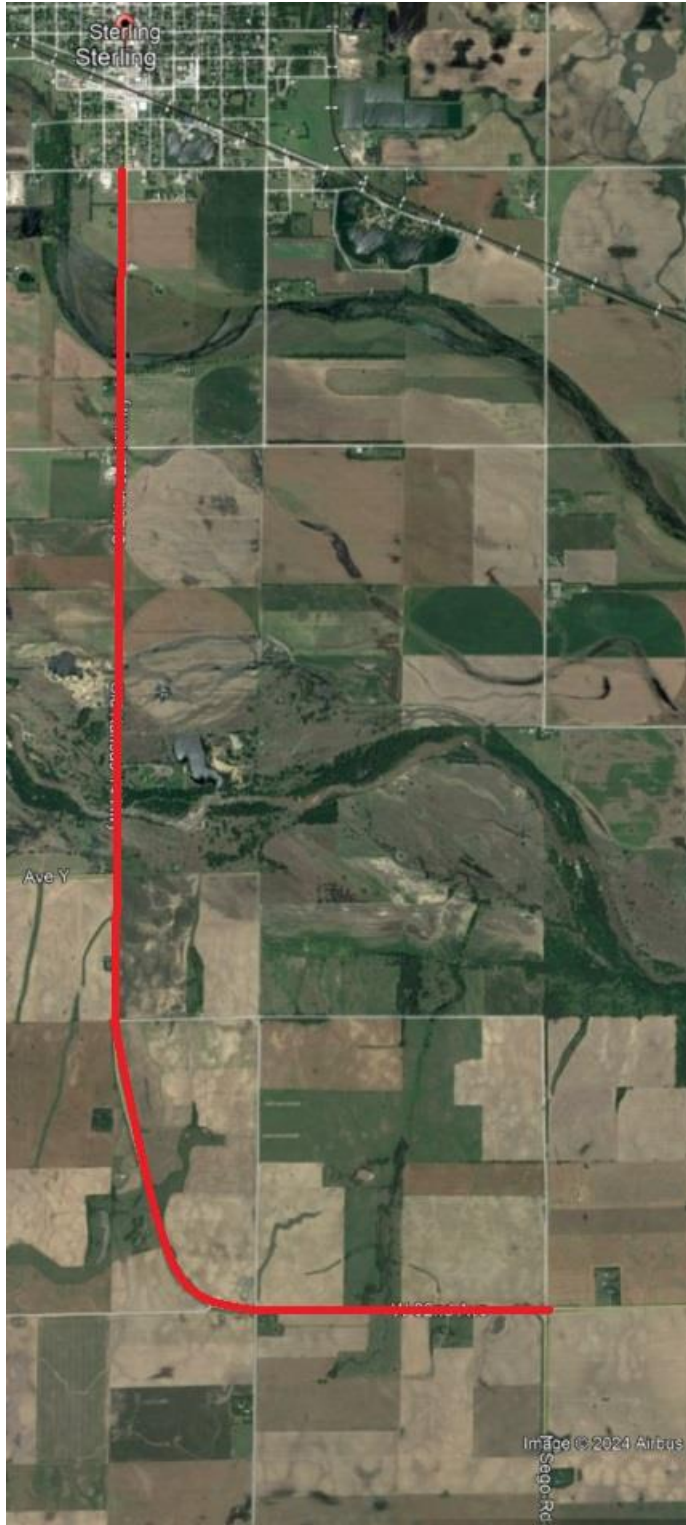
After the initial Reno County portion is completed, the mill and overlay work will shift to the portion in Rice and Reno counties from the south city limits of Sterling to Segoe Road.

That work is expected to begin around July 15 and be completed around July 19.

After the second section is completed, the third phase – through Nickerson – is expected to begin around July 22, ending around July 26.

**The first map below shows the work locations through Nickerson and from the south city limits of Nickerson to the south tie-in at Dean Road. The second map shows the work location from the south city limits of Sterling to Segoe Road.**





###

This information can be made available in alternative accessible formats upon request.  
For information about obtaining an alternative format, contact the KDOT Communications Division,  
700 SW Harrison St., 2<sup>nd</sup> Fl West, Topeka, KS 66603-3745 or phone 785-296-3585 (Voice)/Hearing Impaired – 711.

Click below to connect to KDOT's Social Networks:

