

Northeast District Office  
121 S.W. 21st Street  
Topeka, KS 66612-1429



phone: 785-296-3881  
fax: 785-296-3720  
[www.ksdot.gov](http://www.ksdot.gov)

Calvin Reed, Secretary of Transportation

Laura Kelly, Governor

## **IMMEDIATE RELEASE**

Sept. 6, 2024

### **For more information:**

Kate Craft

[Kate.Craft@ks.gov](mailto:Kate.Craft@ks.gov)

## **U.S. 40/K-10 DDI in Lawrence set to open next week**

The Kansas Department of Transportation's new Diverging Diamond Interchange (DDI) at K-10 and U.S. 40/6<sup>th</sup> Street in west Lawrence is set to open next week.

Lawrence's first DDI will fully open to traffic on Monday, Sept. 9, conditions permitting. The full reopening is sooner than originally anticipated, in large part due to the significant progress that was made by the project contractor, Kings Construction, of Oskaloosa, during the recent interchange closure.

The north intersection of East 900 Road has been relocated to the west and now ties into U.S. 40 via the new John Wesley Drive. The southern tie-in of East 900 Road has been permanently closed at U.S. 40.

This project has also added new sidewalks along U.S. 40 and 6<sup>th</sup> Street that are connected by a barrier-protected pathway down the center of the bridge.

The DDI shifts traffic to the left side of the road between the interchange ramps. Drivers approaching the interchange can either turn right onto K-10 or proceed through the crossover intersections on the left side of the road. At the next intersection, drivers make a "free-flowing" left turn onto K-10 or continue through the intersection, shifting back to the right side of the road to remain on U.S. 40/6<sup>th</sup> Street.

Advantages of the DDI include:

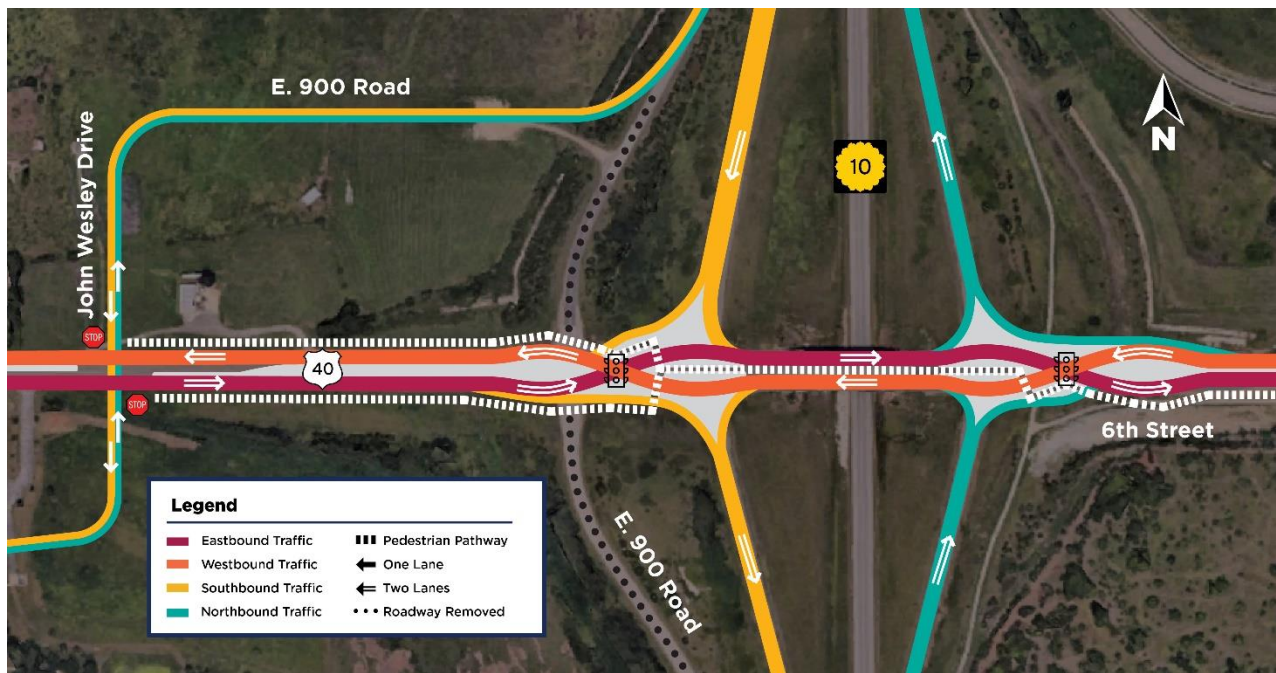
- Improved safety: DDIs eliminate the need to turn left across opposing traffic. They also reduce the number of potential conflict points- where vehicles cross, merge or diverge- which reduces the risk of collisions.
- Increased efficiency: The intersections operate with fewer traffic signal phases, allowing more traffic to cross through and reducing wait times and delays.

- Easier access: Traffic entering and exiting the interchange no longer has to cross opposing lanes of traffic.
- Cost effective: Construction cost and time are shortened by reducing the width of the bridge needed to accommodate left turns.

Intermittent lane closures may occur in the coming weeks as crews work to complete the project. Motorists should stay aware and plan for the possibility of minor delays.

More information about the new U.S. 40/K-10 DDI can be found on the project website: <https://ike.ksdot.gov/us40-k10-interchange-improvements>.

KDOT urges all motorists to be alert and obey the warning signs when approaching and driving through a highway work zone. To stay aware of highway construction projects across Kansas, go to [www.kandrive.org](http://www.kandrive.org) or call 5-1-1.



###

This information can be made available in alternative accessible formats upon request. For information about obtaining an alternative format, contact the KDOT Division of Communications, 700 SW Harrison St., 2<sup>nd</sup> Fl. West, Topeka, KS 66603-3745 or phone 785-296-3585 (Voice)/Hearing Impaired – 711.

Click below to connect to KDOT's Social Networks:

