



Monthly Ridership Recovery Trends

March 2024

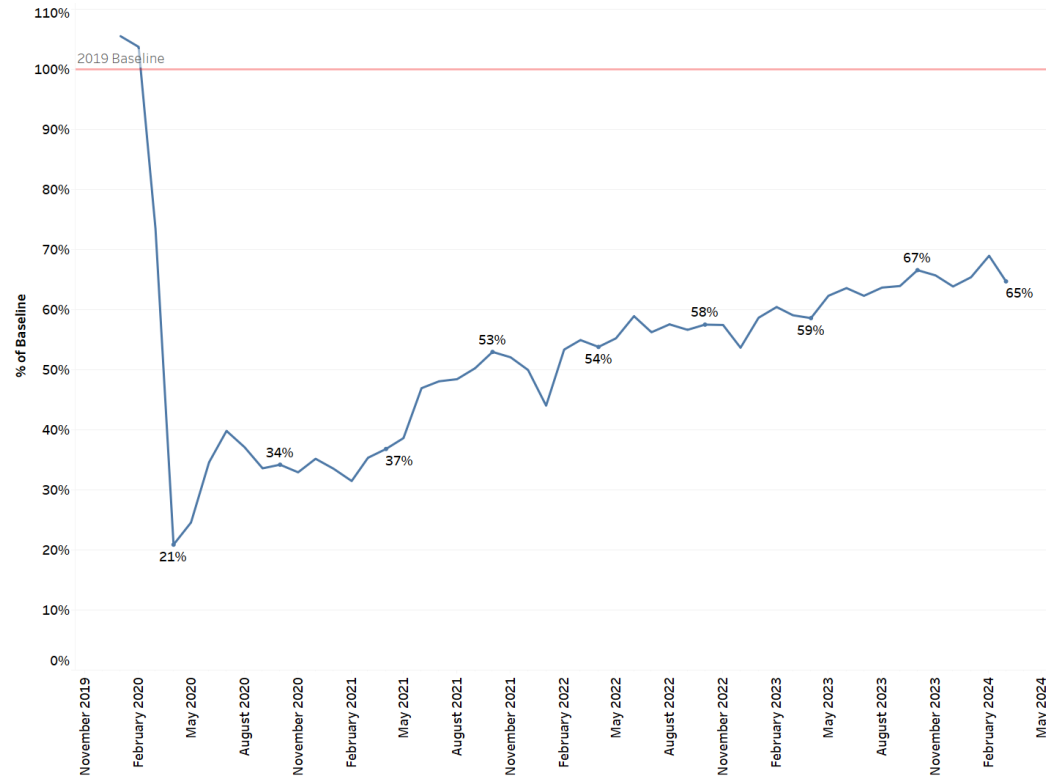
○ Table of Contents

- System Summary
- Bus Ridership
- SEPTA Metro Ridership
- Regional Rail Ridership
- [SEPTA Open Data Portal](#)

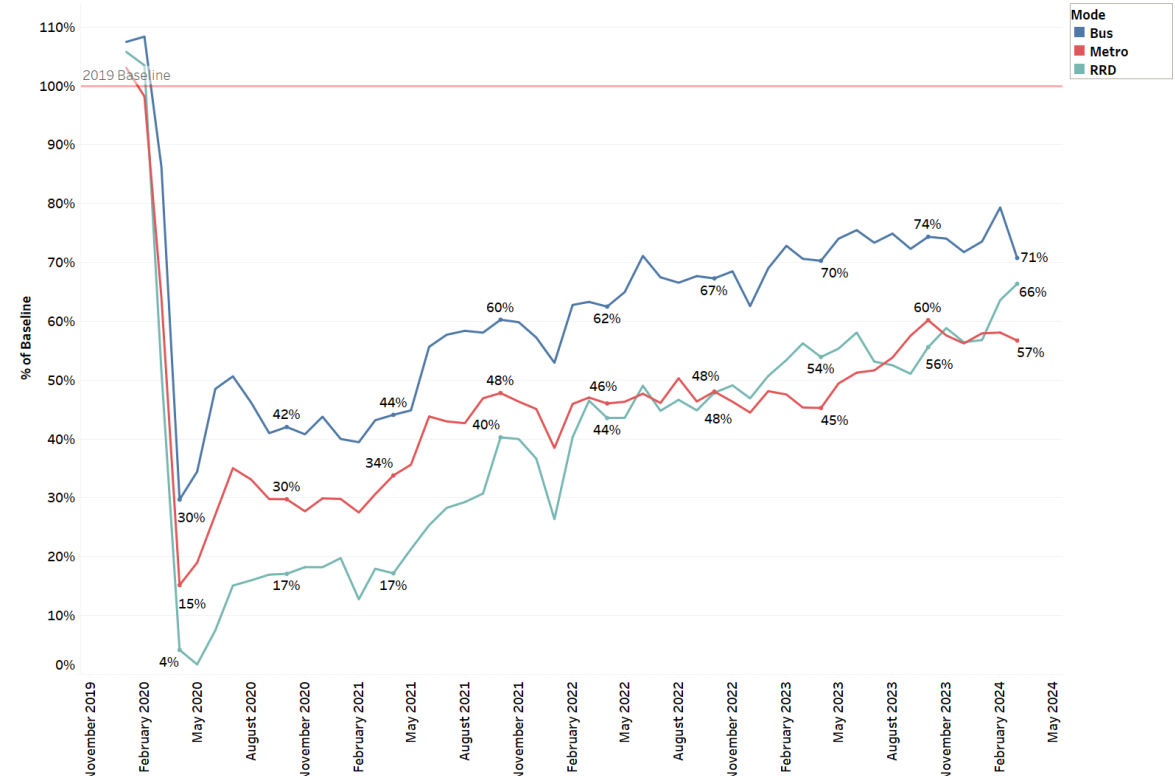
March 2024 Ridership Trends

- System-wide ridership in March was **65%** of pre-COVID March 2019 ridership.
- System-wide ridership increased **10%** from March 2023.
- Average daily ridership was **656,767** unlinked passenger trips across all modes.

Ridership Recovery Rate - All Modes

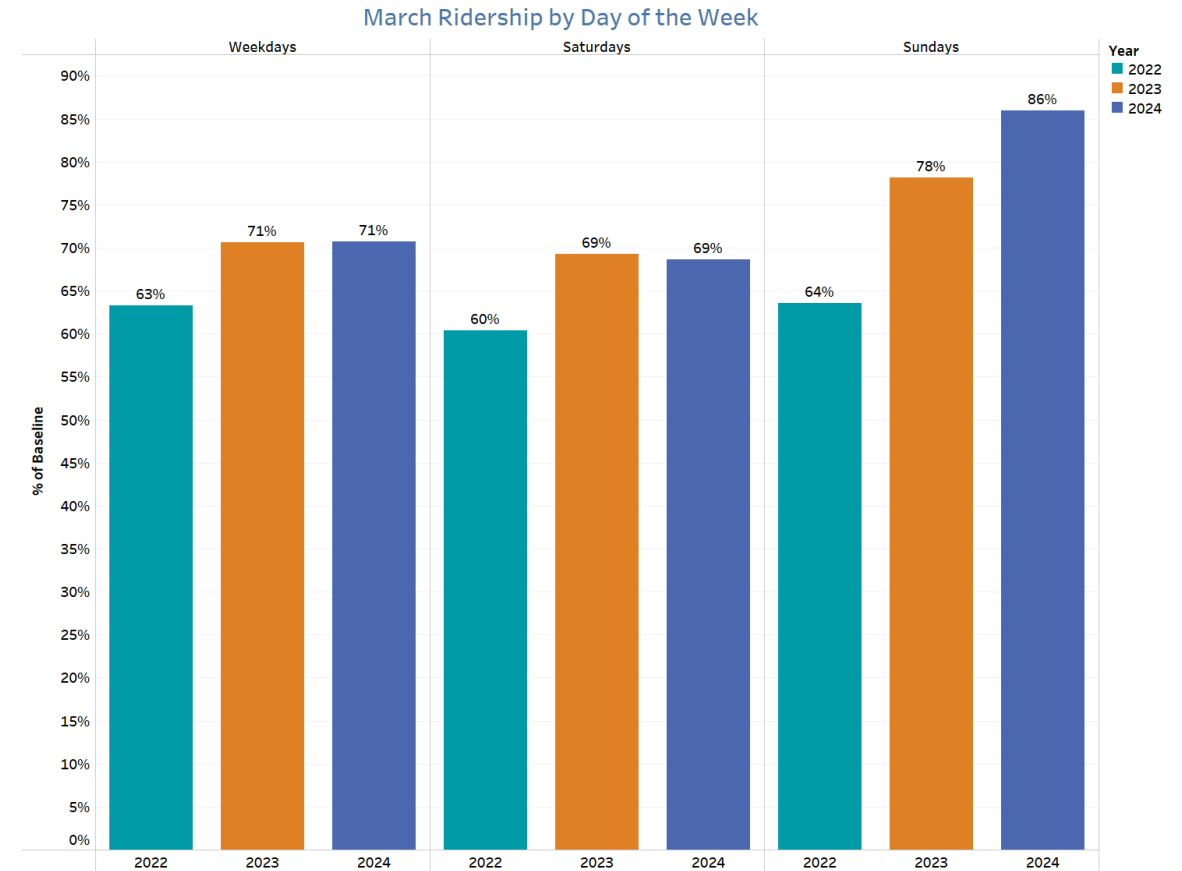


Recovery Rate by Mode



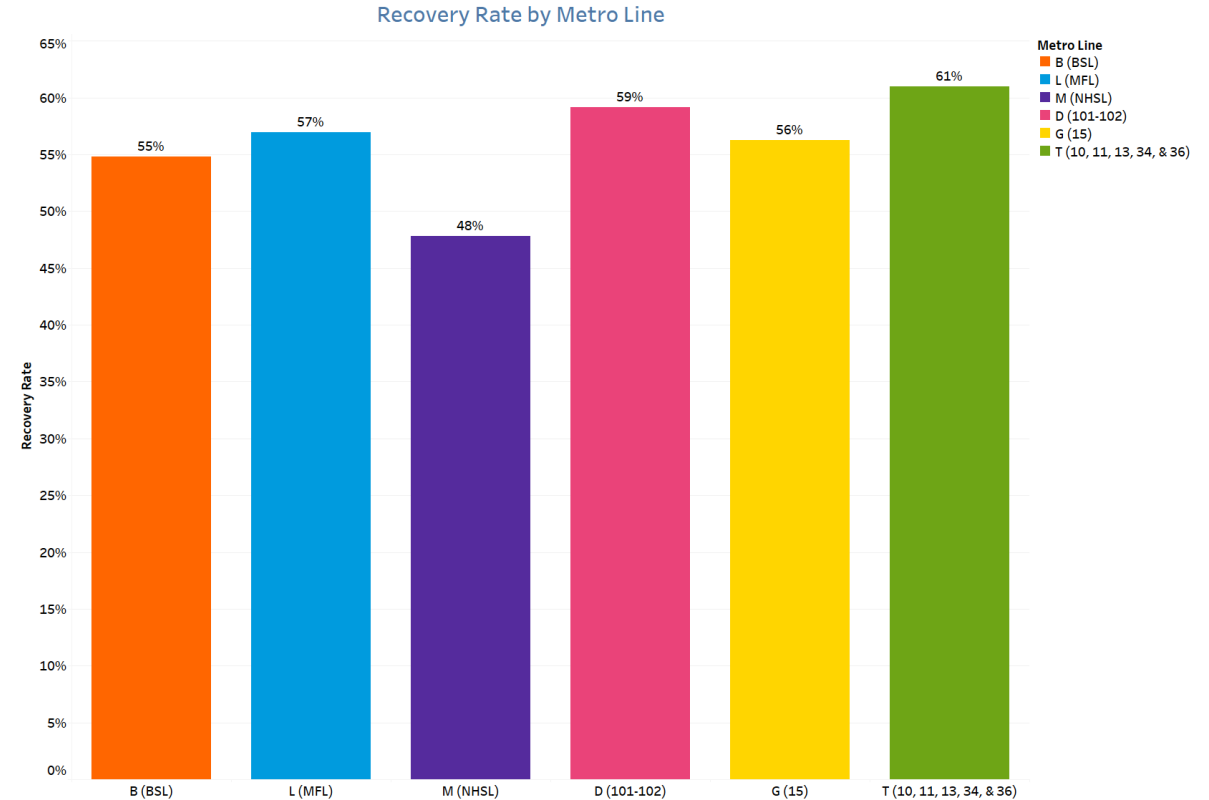
Bus Ridership Trends

- Weekday Bus Mode ridership has increased 0.2% from March '23 and is at 71% of 2019 pre-pandemic levels.
- Saturday ridership has decreased 1% and Sunday ridership has increased 10% from March '23.
- Routes with a 15 minute or greater frequency are at 72% of baseline ridership
- The five routes with the highest recovery rates include Rt. 49 (176%), Rt. 150 (109%), Rt. 42 (94%), Rt. 40 (93%), and Rt. 21 (93%).



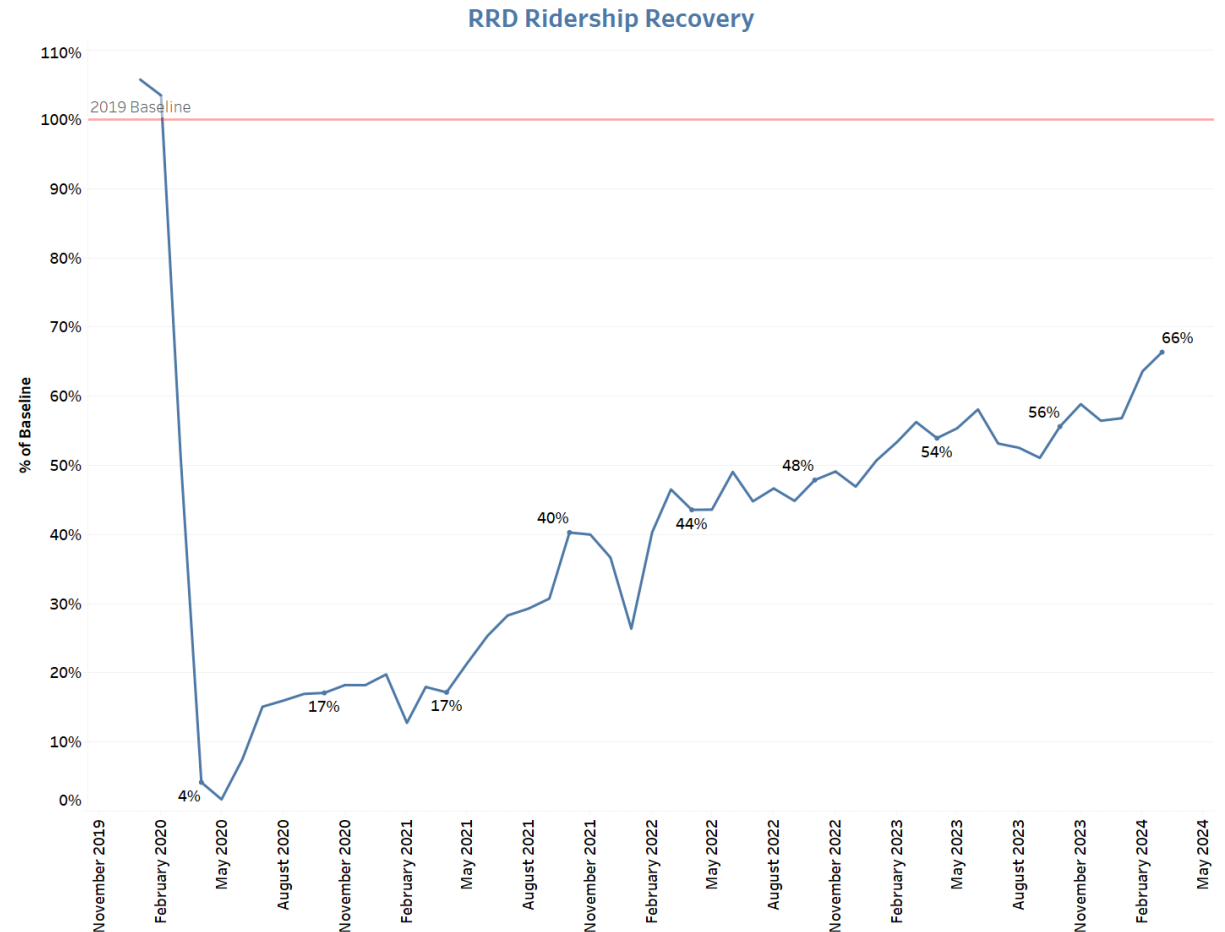
Metro Ridership Trends

- Weekday Metro ridership is at 57% of the 2019 baseline.
- The T has experienced the strongest ridership recovery at 61% and is carrying 24% more passengers per day than March 2023.
- B and L ridership is based on Key ridership; whereas the M, D, and T is based on APC data. The G is calculated using a combination of the two sources.



Regional Rail Ridership Trends

- Regional Rail Division averaged 78,464 trips per weekday.
- Ridership has recovered to 66% of pre-pandemic levels and has improved 18% relative to March 2023.



Open Data Portal

The SEPTA Open Data Portal includes the following:

- [Ridership Recovery Dashboard](#)
- [Bus Stop Ridership](#)
- [Route Performance](#)
- [KPIs/Tracking Progress](#)

Please visit our [Open Data Portal](#) for more information.