



Monthly Ridership Recovery Trends

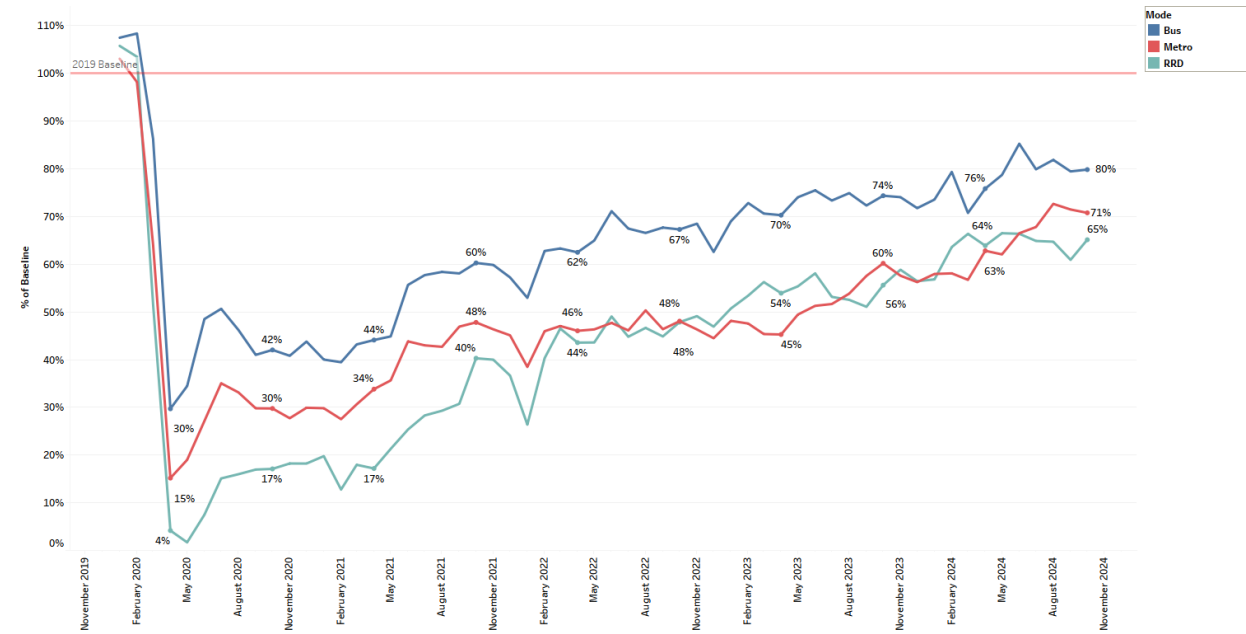
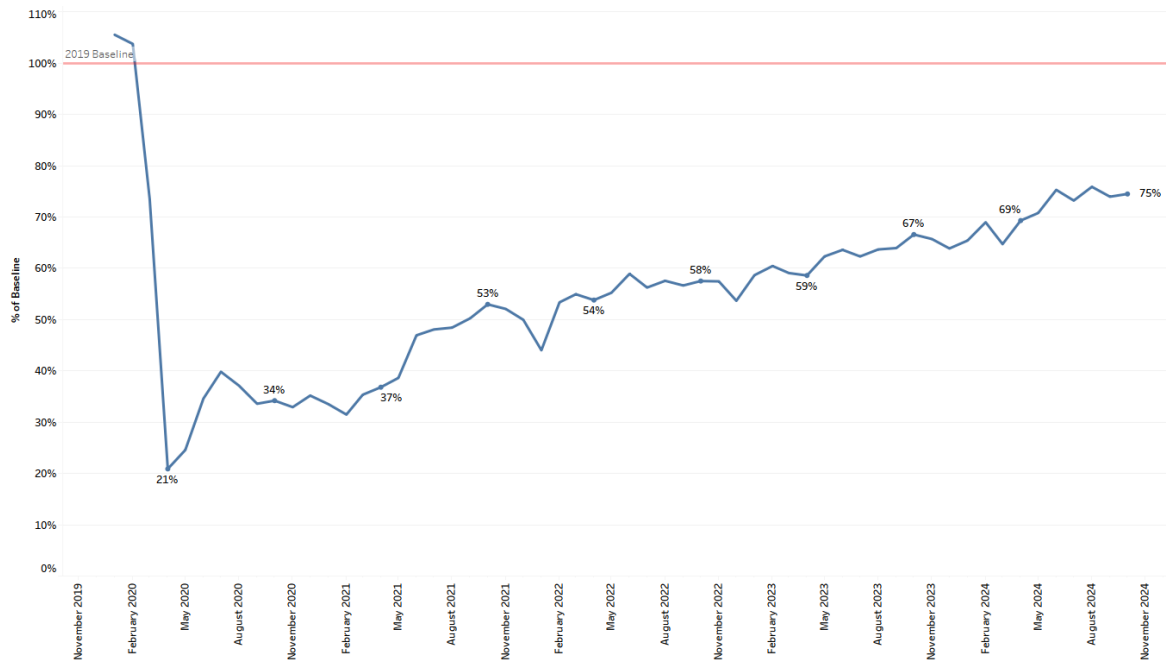
October 2024

○ Table of Contents

- System Summary
- Bus Ridership
- SEPTA Metro Ridership
- Regional Rail Ridership
- [SEPTA Open Data Portal](#)

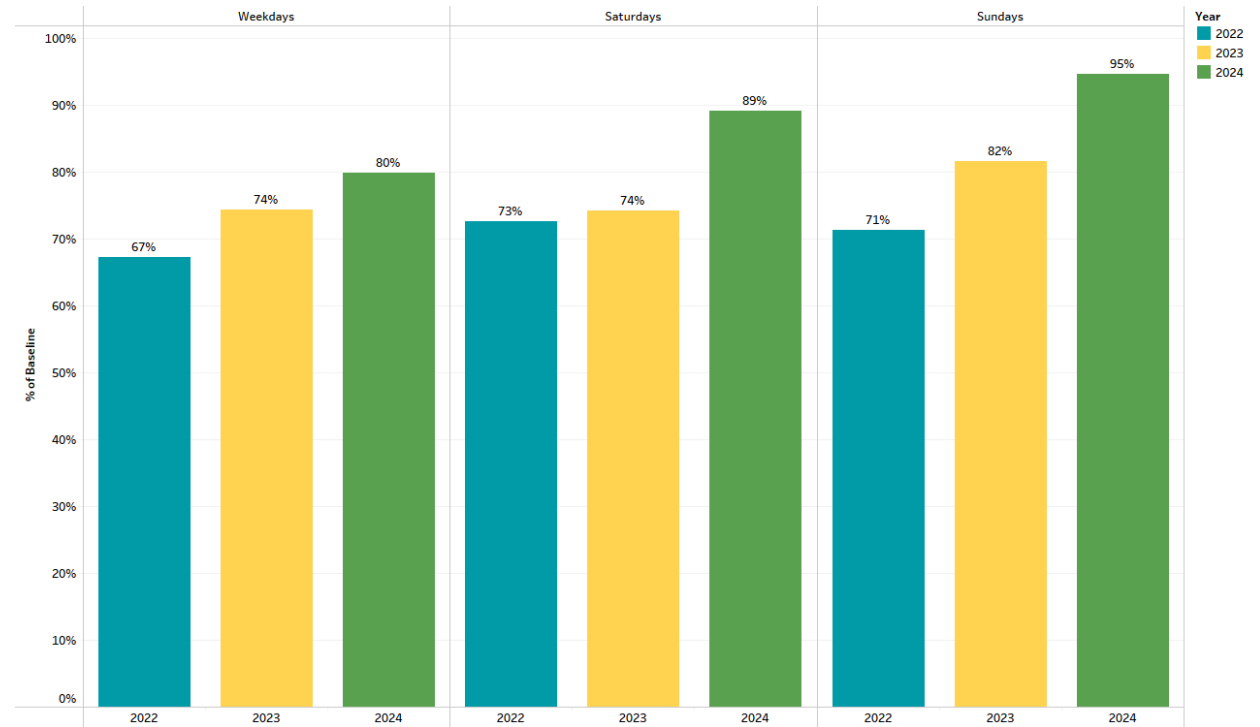
October 2024 Ridership Trends

- System-wide ridership in October was **75%** of pre-COVID October 2019 ridership. This is the highest total ridership since the start of the pandemic.
- System-wide ridership increased **12%** from October 2023.
- Average daily ridership was **797,101** unlinked passenger trips across all modes.



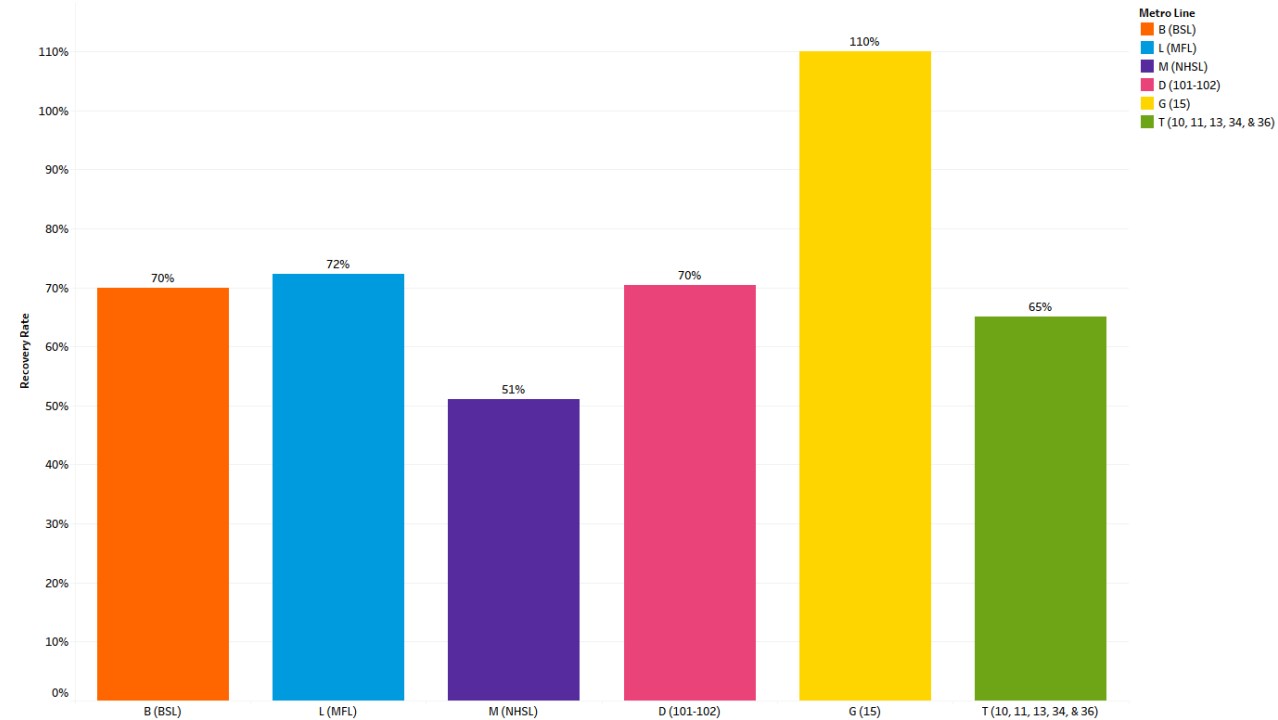
Bus Ridership Trends

- Weekday Bus Mode ridership has increased 7% from October '23 and is at 80% of 2019 pre-pandemic levels.
- Saturday ridership has increased 20% and Sunday ridership has increased 16% relative to October '23.
- Routes with a 15 minute or greater frequency are at 82% of baseline ridership
- The five routes with the highest recovery rates include Rt. 49 (121%), Rt. 42 (105%), Rt. 54 (103%), Rt. 21 (102%), and Rt. 40 (98%).



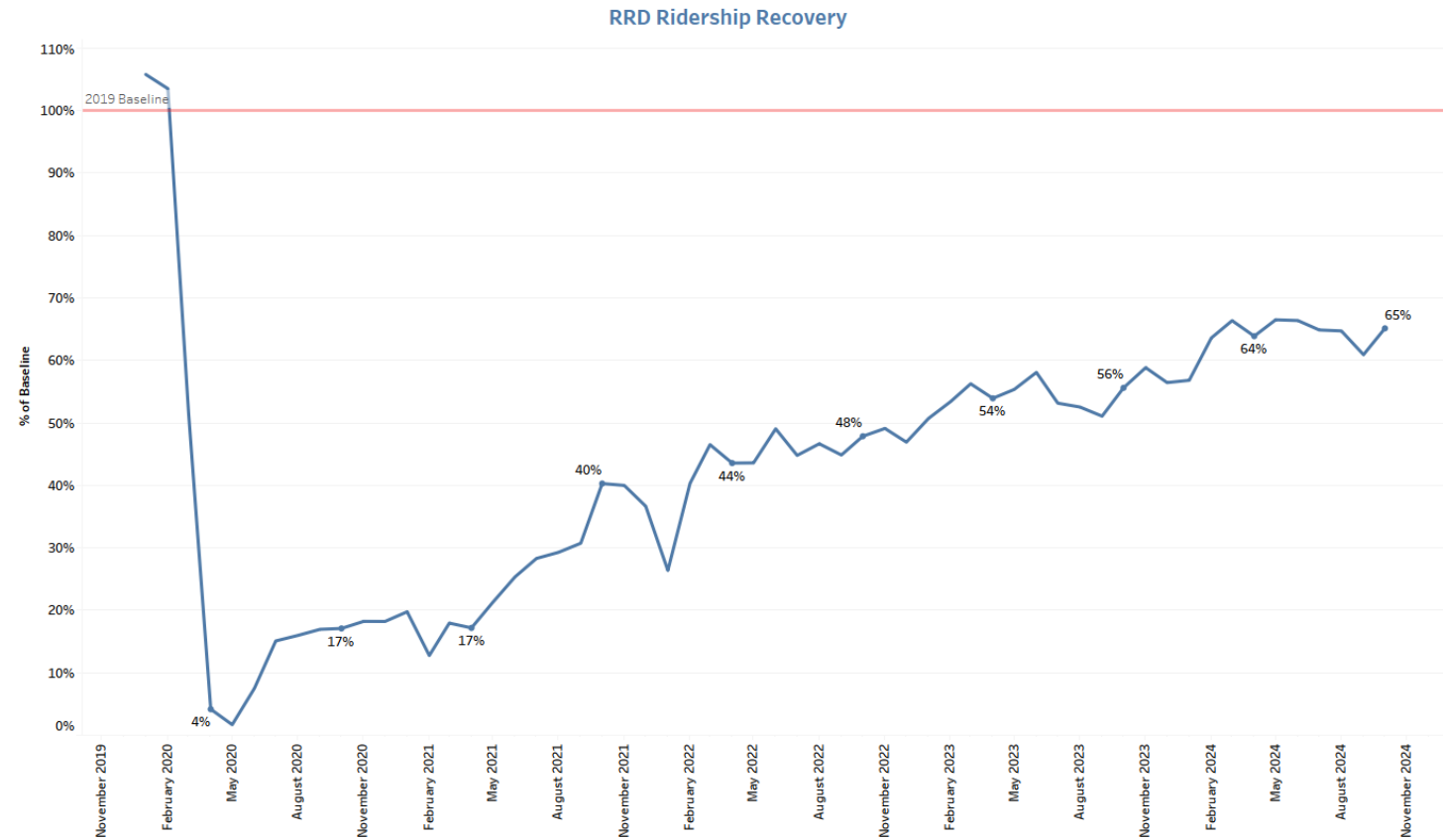
Metro Ridership Trends

- Weekday Metro ridership is at 71% of the 2019 baseline.
- Ridership on Rt. G now exceeds ridership prior to the pandemic.
- B and L ridership is based on Key ridership; whereas the G, M, D, and T are based on APC data.



Regional Rail Ridership Trends

- Regional Rail Division averaged 87,030 trips per weekday.
- Ridership has recovered to 65% of pre-pandemic levels, has improved 17% relative to October 2023, and has the highest average daily ridership since the start of the pandemic.



Open Data Portal

The SEPTA Open Data Portal includes the following:

- [Ridership Recovery Dashboard](#)
- [Bus Stop Ridership](#)
- [Route Performance](#)
- [KPIs/Tracking Progress](#)

Please visit our [Open Data Portal](#) for more information.