



## Assistant Prosecutors Recognized



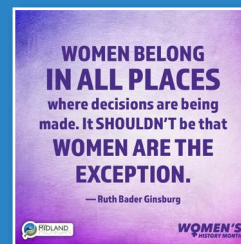
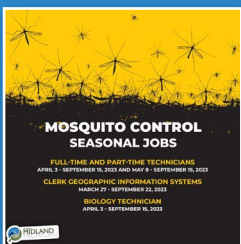
Prosecuting Attorney J Dee Brooks (L) and Assistant Prosecuting Attorney Joe Amend (R)



Assistant Prosecuting Attorney Courtney Driscoll

Congratulations to Midland County Assistant Prosecutors Joe Amend and Courtney Driscoll, who were recognized by the Prosecuting Attorneys Association of Michigan (PAAM). Amend received a 20-Year Service Award and Driscoll was recognized with a 5-Year Service Award. PAAM is a voluntary association of the 83 county prosecutors, the Attorney General, and the U.S. Attorneys serving in Michigan.

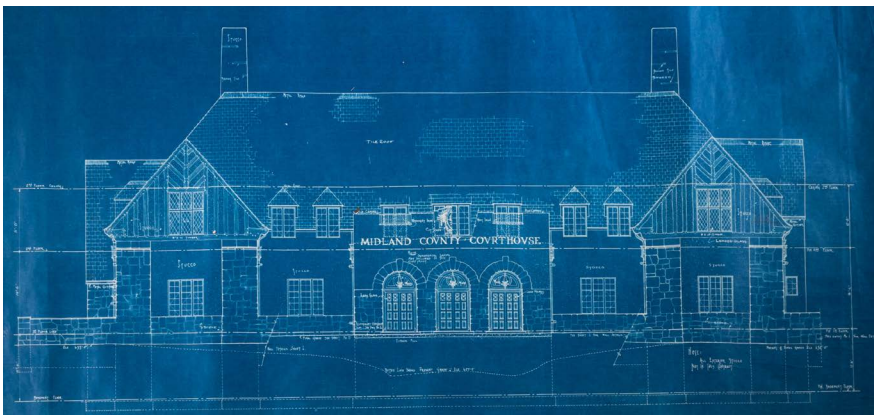
## Recently Seen on Facebook





## Midland County Courthouse Included in Exhibit

“ARTchitecture: Designing Midland” at the Midland Center for the Arts April 7 through May 28 looks at Midland history through the lens of the built environment that developed and morphed over time to fill the needs of an ever-evolving community. From the 1836 cabin of John and Sarah Wyman to the 1971 Midland Center for the Arts Auditorium including the historic Midland County Courthouse, constructed in 1924, enjoy and explore the places and people of our community! [Click here](#) for more information.



## IMPORTANT DATES

### April

- National Volunteer Month
- National County Government Month
- 2<sup>nd</sup> World Autism Awareness Day
- 3-9 National Public Health Week
- 7<sup>th</sup> Good Friday, County Buildings Closed
- 9<sup>h</sup> Easter Sunday
- 18<sup>st</sup> Household Hazardous Waste Collection
- 22<sup>nd</sup> Earth Day

### May

- Skin Cancer Awareness Month
- 2<sup>nd</sup> National Teacher Appreciation Day
- 4<sup>th</sup> World Password Day
- 8<sup>th</sup> Mother's Day
- 13<sup>th</sup> Spring Tire Collection
- 20<sup>th</sup> Armed Forces Day
- 21-27 - National EMS Week
- 29<sup>th</sup> Memorial Day, County Buildings Closed

## BOARD OF COMMISSIONERS INFO ONLINE

Check the Board's [Meeting Calendar](#).

Look up agendas and minutes for all Board and Committee meetings on [BoardDocs](#).

### [View Recorded Meetings](#).

Published monthly by the County of Midland for employees and county residents. Submit content to [MidlandCountyNewsEditor@gmail.com](mailto:MidlandCountyNewsEditor@gmail.com). Subscribe to receive reminder when our newsletter is published.

**County of Midland**

**220 W. Ellsworth St.**

**MIDLAND, MI 48640**





### Mosquito Control Spring Aerial Program Set for April

Be on the lookout in April for low flying aircraft across the County. Each spring Midland County Mosquito Control (MCMC) contracts with an aerial applicator service to apply mosquito control products to woodland pools. Material used to control larval mosquitoes is known as Bti. The Bti active ingredient comes from a naturally occurring soil bacterium. Its benefits include high effectiveness and selectivity for mosquitoes while leaving other aquatic organisms unharmed. As the aircraft makes passes, material is released over woodland pools and shut off when passing over open fields, structures or dry portions of the woods. The spring program helps to significantly reduce the number of mosquitoes that emerge in spring and early summer. [Click here](#) for more information about the aerial program and/or [click here](#) to watch a short video highlighting the program.

### Household HAZARDOUS WASTE COLLECTION

Midland County residents may dispose of household items that are considered hazardous, such as chemicals, oil-based paints and stains, pesticides, insecticides, household cleaning products, certain auto products, and mercury during Hazardous Waste Collection days. Household hazardous materials (HHM) can lead to contamination of groundwater, surface water, well water, or other water sources when spilled on the ground, poured down the drain, or placed in trash containers. This is your opportunity to safely and properly dispose of most hazardous materials you may have in your home.

Appointments are required, [click here](#) for more information and to schedule appointments or call the Midland County Health Department at 989-832-6681. Be prepared to indicate the type and amount of materials you wish to drop off. Only Midland County residents with appointments will be allowed to drop off materials.

**Dates scheduled for 2023 are:**  
**Tuesday, April 18**  
**Thursday, June 22**  
**Wednesday, August 23**  
**Tuesday, October 24**

These collections are made possible by a partnership between the City of Midland and the Midland County Department of Public Health.



# League of Women Voters Supports County School Bond Proposals

## Support Local School Proposals

**Coleman Community Schools** is seeking approval of a 2.5 millage rate increase in a \$15.36 million bond proposal that will appear on the May 2nd ballot. If passed, the proposed upgrades will increase the safety and instructional excellence for Coleman Junior and Senior High School students, giving them the best opportunities for success in the future.

The Midland Area League of Women Voters (LWV) supports this millage and strongly encourages a “yes” vote for its passage. LWV commends the Coleman Community School Board for seeking input from the community and developing a renovation plan that addresses the pressing needs of the district.

More detailed information on the improvements and other aspects of this project can be found at [colemanschools.net](http://colemanschools.net).

In another school millage ballot proposal, **Midland County Educational Service Agency (MCESA)** is requesting renewal of an enhancement millage in the May 2 election. Voters approved an enhancement millage of 1.5 mills for 5 years in February 2014 along with the renewal of the millage in August 2018. This millage will raise approximately \$5,450,000 annually for the public school districts of Midland County, increasing funding for each district by \$453 per pupil beyond the state foundation.

The Midland Area League of Women Voters (LWV) also supports this millage and strongly encourages a “yes” vote for its passage.

More information on the ESA proposal can be found at [midlandesa.org](http://midlandesa.org).

Be sure you are prepared to vote, either by absentee ballot if you have requested one, or at the polls on Tuesday, May 2, starting at 7 a.m.

You are eligible to vote if you are a U.S. citizen, 18 years old or older on election day, a resident of your state, city, or township, and registered before an election. You can register in person at the Secretary of State’s office in Midland or with your township or city clerk right up to the election, or by mail or online at [michigan.gov/voterregistration](http://michigan.gov/voterregistration) up to 14 days before the election. Check with the Secretary of State’s Office or local clerks for more information on current registration and absentee/early voting ballot requirements.



**VOTE MAY 2<sup>ND</sup>**



# Power of Vaccination: Elimination of Polio

March 28, 2023



Dr. Catherine M Bodnar, MD, MPH  
Medical Director  
Midland County Department of Public Health

Recently, one of our Midland County Department of Public Health (MCDPH) staff came across some old records, which included a log of Midland County poliomyelitis (polio) cases from April 1, 1947. The log detailed how a child or an adult was afflicted by polio. The log listed 16 cases of poliomyelitis, 13 of the 16 people listed were children. Some descriptions of the disability include:

- Both legs in braces, scoliosis
- One leg slightly affected
- One arm almost useless
- Shortening and atrophy of one leg
- Both legs in braces, using crutches
- Slight drag of right foot

## Poliovirus and Polio

The poliovirus spreads through person-to-person contact or through contaminated food and water in unsanitary conditions. Practicing good hand hygiene, washing hands often with soap and water, is an important preventive measure. Alcohol-based hand sanitizers do not kill poliovirus. A person is contagious immediately before and up to 2 weeks after symptoms appear. People who have no symptoms can still pass the virus to others, who may then get sick.

The poliovirus can infect a person's spinal cord, causing sudden paralysis and/or weakness. Most people have no symptoms, 25% have a flu-like illness that includes sore throat, fever, fatigue, headache, nausea and stomach pain. These symptoms last 2-5 days and then resolve without specific treatment. About 1-5% of people develop a viral meningitis. Paralysis or weakness in the arms, legs or both develops in about 1 in 200 people infected with the poliovirus. "Polio" is the paralytic disease. Between 2-10% of people who have polio die, because the virus affects the respiratory muscles. Recovery from paralysis varies and may be incomplete, with persistent weakness. In the US, the devastating effect of polio was most dramatic in the 1950s, when large hospital wards were filled with patients on respirators, many of them children. The disease reached its peak incidence in the United States in 1952, with 20,000 cases of polio. Many who initially partially or even fully recover can develop new muscle pain, weakness, or paralysis 15 to 40 years later, known as post-polio syndrome.

## Key Points:

- Poliovirus was detected circulating in several counties in 2022 in New York State.
- The Oral Polio Virus (OPV), containing weakened strains of poliovirus, is still used in many countries. Vaccine-derived poliovirus can occur in the US if travelers pick it up elsewhere and bring it back to the US. The weakened strains of poliovirus can circulate in a community for several years and revert to a form that causes illness and paralysis. Both OPV and Inactivated Polio Vaccine (IPV) protect against polio (paralytic illness).
- The Inactivated Polio Vaccine (IPV), protects against polio (paralytic illness), but does not provide good protection for transmission of the poliovirus. High vaccination rates (>80%) are needed for community immunity.
- Stay up to date on vaccinations for vaccine preventable diseases.

