

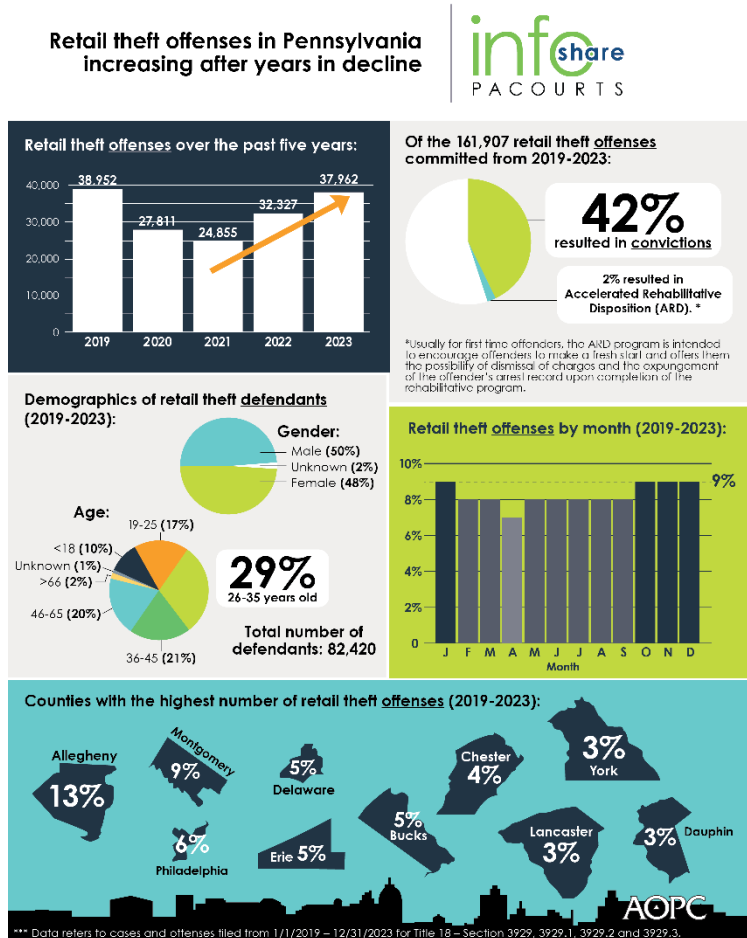
**Infographic for Immediate Release**

Dec. 13, 2024

**Retail theft offenses in Pennsylvania increasing after years in decline**

**HARRISBURG** — Retail theft offenses in Pennsylvania increased by 53% from 2021 to 2023, following years in decline.

The infographic highlights retail theft data from 2019 to 2023 including the statewide number of retail theft offenses by month, the top 10 counties with the highest number of retail theft offenses and statewide defendant demographics.



A high-resolution file of the graphic is available for download at [www.pacourts.us](http://www.pacourts.us) under [Media Resources](#).

*PA Courts InfoShare is a monthly product of the Administrative Office of Pennsylvania Courts (AOPC) that visually highlights the work of the courts with interesting data and statistics obtained through the judiciary’s case management systems, interactive dashboards and other research. Reproduction is permissible with source cited.*



##

**Media contact:** [Olivia Antonucci](#), 609-238-5182

**Editor’s Note:** County-by-county retail theft offenses filed from 1/1/2019-12/31/2023.

Statewide number of offenses filed from 1/1/2019 through 12/31/2023 for Title 18 - Sections 3929, 3929.1, 3929.2, and 3929.3, as recorded in the Magisterial District Judge System (MDJS) and Common Pleas Case Management System (CPCMS); Grouped by County and Section

County / Section	2019	2020	2021	2022	2023	Total	Percentage of Total
<b>Adams</b>	<b>115</b>	<b>81</b>	<b>56</b>	<b>133</b>	<b>103</b>	<b>488</b>	<b>0.30%</b>
3929	115	79	56	133	103	486	0.30%
3929.1	0	2	0	0	0	2	0.00%
<b>Allegheny</b>	<b>5,411</b>	<b>3,258</b>	<b>2,694</b>	<b>3,777</b>	<b>5,157</b>	<b>20,297</b>	<b>12.54%</b>
3929	5,363	3,244	2,680	3,761	5,132	20,180	12.46%
3929.1	1	1	0	1	0	3	0.00%
3929.2	11	0	0	0	7	18	0.01%
3929.3	36	13	14	15	18	96	0.06%
<b>Armstrong</b>	<b>119</b>	<b>143</b>	<b>30</b>	<b>101</b>	<b>76</b>	<b>469</b>	<b>0.29%</b>
3929	116	143	30	101	76	466	0.29%
3929.3	3	0	0	0	0	3	0.00%
<b>Beaver</b>	<b>628</b>	<b>588</b>	<b>370</b>	<b>519</b>	<b>584</b>	<b>2,689</b>	<b>1.66%</b>
3929	627	587	370	519	584	2,687	1.66%
3929.1	1	0	0	0	0	1	0.00%
3929.2	0	1	0	0	0	1	0.00%
<b>Bedford</b>	<b>53</b>	<b>50</b>	<b>36</b>	<b>50</b>	<b>38</b>	<b>227</b>	<b>0.14%</b>
3929	53	50	36	50	38	227	0.14%
<b>Berks</b>	<b>832</b>	<b>773</b>	<b>700</b>	<b>1,015</b>	<b>1,244</b>	<b>4,564</b>	<b>2.82%</b>
3929	832	772	699	1,015	1,233	4,551	2.81%

3929.2	0	1	1	0	0	2	0.00%
3929.3	0	0	0	0	11	11	0.01%
<b>Blair</b>	<b>512</b>	<b>396</b>	<b>356</b>	<b>424</b>	<b>444</b>	<b>2,132</b>	<b>1.32%</b>
3929	512	396	356	424	444	2,132	1.32%
<b>Bradford</b>	<b>145</b>	<b>151</b>	<b>140</b>	<b>118</b>	<b>86</b>	<b>640</b>	<b>0.40%</b>
3929	145	151	140	118	86	640	0.40%
<b>Bucks</b>	<b>1,716</b>	<b>1,427</b>	<b>1,453</b>	<b>1,983</b>	<b>2,180</b>	<b>8,759</b>	<b>5.41%</b>
3929	1,700	1,424	1,445	1,977	2,167	8,713	5.38%
3929.1	1	0	5	0	0	6	0.00%
3929.2	3	3	3	3	4	16	0.01%
3929.3	12	0	0	3	9	24	0.01%
<b>Butler</b>	<b>610</b>	<b>520</b>	<b>572</b>	<b>699</b>	<b>730</b>	<b>3,131</b>	<b>1.93%</b>
3929	605	519	568	699	728	3,119	1.93%
3929.2	2	1	0	0	0	3	0.00%
3929.3	3	0	4	0	2	9	0.01%
<b>Cambria</b>	<b>333</b>	<b>239</b>	<b>141</b>	<b>250</b>	<b>472</b>	<b>1,435</b>	<b>0.89%</b>
3929	333	239	141	250	472	1,435	0.89%
<b>Cameron</b>	<b>1</b>	<b>2</b>	<b>2</b>	<b>6</b>	<b>4</b>	<b>15</b>	<b>0.01%</b>
3929	1	2	2	5	4	14	0.01%
3929.3	0	0	0	1	0	1	0.00%
<b>Carbon</b>	<b>97</b>	<b>145</b>	<b>91</b>	<b>62</b>	<b>144</b>	<b>539</b>	<b>0.33%</b>
3929	97	145	91	62	144	539	0.33%
<b>Centre</b>	<b>263</b>	<b>340</b>	<b>121</b>	<b>504</b>	<b>438</b>	<b>1,666</b>	<b>1.03%</b>
3929	262	340	121	504	438	1,665	1.03%
3929.2	1	0	0	0	0	1	0.00%
<b>Chester</b>	<b>1,160</b>	<b>960</b>	<b>1,128</b>	<b>1,210</b>	<b>1,694</b>	<b>6,152</b>	<b>3.80%</b>
3929	1,149	954	1,118	1,207	1,694	6,122	3.78%
3929.1	1	0	0	0	0	1	0.00%
3929.2	7	3	1	2	0	13	0.01%
3929.3	3	3	9	1	0	16	0.01%
<b>Clarion</b>	<b>86</b>	<b>52</b>	<b>60</b>	<b>48</b>	<b>72</b>	<b>318</b>	<b>0.20%</b>
3929	86	52	60	48	72	318	0.20%
<b>Clearfield</b>	<b>205</b>	<b>197</b>	<b>167</b>	<b>206</b>	<b>127</b>	<b>902</b>	<b>0.56%</b>
3929	205	196	167	206	127	901	0.56%
3929.3	0	1	0	0	0	1	0.00%
<b>Clinton</b>	<b>103</b>	<b>82</b>	<b>40</b>	<b>63</b>	<b>80</b>	<b>368</b>	<b>0.23%</b>
3929	103	82	40	63	80	368	0.23%
<b>Columbia</b>	<b>121</b>	<b>183</b>	<b>185</b>	<b>109</b>	<b>222</b>	<b>820</b>	<b>0.51%</b>
3929	121	183	185	109	222	820	0.51%
<b>Crawford</b>	<b>197</b>	<b>139</b>	<b>148</b>	<b>250</b>	<b>141</b>	<b>875</b>	<b>0.54%</b>
3929	197	139	148	249	141	874	0.54%
3929.1	0	0	0	1	0	1	0.00%
<b>Cumberland</b>	<b>917</b>	<b>859</b>	<b>987</b>	<b>1,084</b>	<b>1,019</b>	<b>4,866</b>	<b>3.01%</b>

3929	913	853	986	1,069	977	4,798	2.96%
3929.1	0	0	0	1	0	1	0.00%
3929.2	0	0	0	0	5	5	0.00%
3929.3	4	6	1	14	37	62	0.04%
<b>Dauphin</b>	<b>1,151</b>	<b>1,016</b>	<b>853</b>	<b>879</b>	<b>1,059</b>	<b>4,958</b>	<b>3.06%</b>
3929	1,150	1,016	850	875	1,058	4,949	3.06%
3929.3	1	0	3	4	1	9	0.01%
<b>Delaware</b>	<b>2,104</b>	<b>1,301</b>	<b>1,445</b>	<b>1,906</b>	<b>1,890</b>	<b>8,646</b>	<b>5.34%</b>
3929	2,097	1,289	1,438	1,813	1,888	8,525	5.27%
3929.2	5	3	1	4	2	15	0.01%
3929.3	2	9	6	89	0	106	0.07%
<b>Elk</b>	<b>111</b>	<b>93</b>	<b>99</b>	<b>124</b>	<b>75</b>	<b>502</b>	<b>0.31%</b>
3929	111	93	99	124	75	502	0.31%
<b>Erie</b>	<b>1,709</b>	<b>1,824</b>	<b>1,630</b>	<b>1,340</b>	<b>1,220</b>	<b>7,723</b>	<b>4.77%</b>
3929	1,709	1,824	1,630	1,340	1,220	7,723	4.77%
<b>Fayette</b>	<b>551</b>	<b>395</b>	<b>293</b>	<b>417</b>	<b>526</b>	<b>2,182</b>	<b>1.35%</b>
3929	551	395	293	417	526	2,182	1.35%
<b>Forest</b>	<b>0</b>	<b>0</b>	<b>5</b>	<b>2</b>	<b>0</b>	<b>7</b>	<b>0.00%</b>
3929	0	0	5	2	0	7	0.00%
<b>Franklin</b>	<b>458</b>	<b>399</b>	<b>483</b>	<b>383</b>	<b>528</b>	<b>2,251</b>	<b>1.39%</b>
3929	458	399	483	383	528	2,251	1.39%
<b>Fulton</b>	<b>19</b>	<b>14</b>	<b>8</b>	<b>15</b>	<b>17</b>	<b>73</b>	<b>0.05%</b>
3929	19	14	8	15	17	73	0.05%
<b>Greene</b>	<b>109</b>	<b>71</b>	<b>36</b>	<b>62</b>	<b>74</b>	<b>352</b>	<b>0.22%</b>
3929	109	71	36	62	74	352	0.22%
<b>Huntingdon</b>	<b>57</b>	<b>29</b>	<b>54</b>	<b>64</b>	<b>63</b>	<b>267</b>	<b>0.16%</b>
3929	57	29	54	64	63	267	0.16%
<b>Indiana</b>	<b>472</b>	<b>306</b>	<b>154</b>	<b>166</b>	<b>235</b>	<b>1,333</b>	<b>0.82%</b>
3929	469	306	154	166	235	1,330	0.82%
3929.3	3	0	0	0	0	3	0.00%
<b>Jefferson</b>	<b>79</b>	<b>43</b>	<b>20</b>	<b>27</b>	<b>29</b>	<b>198</b>	<b>0.12%</b>
3929	79	43	20	27	29	198	0.12%
<b>Juniata</b>	<b>10</b>	<b>4</b>	<b>11</b>	<b>9</b>	<b>20</b>	<b>54</b>	<b>0.03%</b>
3929	10	4	11	9	20	54	0.03%
<b>Lackawanna</b>	<b>449</b>	<b>339</b>	<b>269</b>	<b>393</b>	<b>435</b>	<b>1,885</b>	<b>1.16%</b>
3929	449	337	267	393	431	1,877	1.16%
3929.2	0	2	1	0	0	3	0.00%
3929.3	0	0	1	0	4	5	0.00%
<b>Lancaster</b>	<b>1,286</b>	<b>782</b>	<b>858</b>	<b>1,171</b>	<b>1,490</b>	<b>5,587</b>	<b>3.45%</b>
3929	1,281	773	849	1,170	1,490	5,563	3.44%
3929.1	2	0	1	0	0	3	0.00%
3929.2	1	0	0	1	0	2	0.00%
3929.3	2	9	8	0	0	19	0.01%

<b>Lawrence</b>	<b>189</b>	<b>264</b>	<b>137</b>	<b>176</b>	<b>162</b>	<b>928</b>	<b>0.57%</b>
3929	188	264	137	176	161	926	0.57%
3929.2	0	0	0	0	1	1	0.00%
3929.3	1	0	0	0	0	1	0.00%
<b>Lebanon</b>	<b>748</b>	<b>376</b>	<b>176</b>	<b>175</b>	<b>297</b>	<b>1,772</b>	<b>1.09%</b>
3929	748	376	176	175	297	1,772	1.09%
<b>Lehigh</b>	<b>1,324</b>	<b>608</b>	<b>484</b>	<b>762</b>	<b>1,032</b>	<b>4,210</b>	<b>2.60%</b>
3929	1,324	607	484	762	1,031	4,208	2.60%
3929.2	0	1	0	0	0	1	0.00%
3929.3	0	0	0	0	1	1	0.00%
<b>Luzerne</b>	<b>1,057</b>	<b>802</b>	<b>570</b>	<b>756</b>	<b>887</b>	<b>4,072</b>	<b>2.52%</b>
3929	1,057	797	570	756	887	4,067	2.51%
3929.3	0	5	0	0	0	5	0.00%
<b>Lycoming</b>	<b>346</b>	<b>213</b>	<b>163</b>	<b>192</b>	<b>264</b>	<b>1,178</b>	<b>0.73%</b>
3929	346	213	163	192	263	1,177	0.73%
3929.2	0	0	0	0	1	1	0.00%
<b>McKean</b>	<b>85</b>	<b>58</b>	<b>75</b>	<b>185</b>	<b>144</b>	<b>547</b>	<b>0.34%</b>
3929	85	58	75	185	144	547	0.34%
<b>Mercer</b>	<b>618</b>	<b>444</b>	<b>260</b>	<b>322</b>	<b>362</b>	<b>2,006</b>	<b>1.24%</b>
3929	617	444	259	319	362	2,001	1.24%
3929.2	1	0	1	3	0	5	0.00%
<b>Mifflin</b>	<b>106</b>	<b>62</b>	<b>63</b>	<b>97</b>	<b>135</b>	<b>463</b>	<b>0.29%</b>
3929	106	62	63	97	135	463	0.29%
<b>Monroe</b>	<b>806</b>	<b>570</b>	<b>489</b>	<b>653</b>	<b>849</b>	<b>3,367</b>	<b>2.08%</b>
3929	806	562	488	648	849	3,353	2.07%
3929.3	0	8	1	5	0	14	0.01%
<b>Montgomery</b>	<b>2,812</b>	<b>1,828</b>	<b>2,051</b>	<b>3,486</b>	<b>4,278</b>	<b>14,455</b>	<b>8.93%</b>
3929	2,791	1,813	2,037	3,383	4,002	14,026	8.66%
3929.1	2	0	0	0	0	2	0.00%
3929.2	17	15	8	13	23	76	0.05%
3929.3	2	0	6	90	253	351	0.22%
<b>Montour</b>	<b>18</b>	<b>17</b>	<b>18</b>	<b>7</b>	<b>25</b>	<b>85</b>	<b>0.05%</b>
3929	18	17	18	7	25	85	0.05%
<b>Northampton</b>	<b>615</b>	<b>330</b>	<b>257</b>	<b>435</b>	<b>528</b>	<b>2,165</b>	<b>1.34%</b>
3929	613	330	257	435	528	2,163	1.34%
3929.2	2	0	0	0	0	2	0.00%
<b>Northumberland</b>	<b>235</b>	<b>147</b>	<b>99</b>	<b>92</b>	<b>181</b>	<b>754</b>	<b>0.47%</b>
3929	235	147	99	92	181	754	0.47%
<b>Perry</b>	<b>23</b>	<b>58</b>	<b>27</b>	<b>7</b>	<b>33</b>	<b>148</b>	<b>0.09%</b>
3929	23	58	27	7	33	148	0.09%
<b>Philadelphia</b>	<b>3,196</b>	<b>1,866</b>	<b>1,393</b>	<b>1,751</b>	<b>1,904</b>	<b>10,110</b>	<b>6.24%</b>
3929	3,191	1,865	1,393	1,748	1,870	10,067	6.22%
3929.1	0	0	0	1	0	1	0.00%

3929.2	2	1	0	1	0	4	0.00%
3929.3	3	0	0	1	34	38	0.02%
<b>Pike</b>	<b>46</b>	<b>77</b>	<b>82</b>	<b>195</b>	<b>152</b>	<b>552</b>	<b>0.34%</b>
3929	46	77	82	195	152	552	0.34%
<b>Potter</b>	<b>4</b>	<b>2</b>	<b>4</b>	<b>7</b>	<b>14</b>	<b>31</b>	<b>0.02%</b>
3929	4	2	4	7	14	31	0.02%
<b>Schuylkill</b>	<b>475</b>	<b>288</b>	<b>179</b>	<b>221</b>	<b>263</b>	<b>1,426</b>	<b>0.88%</b>
3929	475	288	179	220	263	1,425	0.88%
3929.3	0	0	0	1	0	1	0.00%
<b>Snyder</b>	<b>215</b>	<b>93</b>	<b>251</b>	<b>125</b>	<b>83</b>	<b>767</b>	<b>0.47%</b>
3929	215	93	251	125	82	766	0.47%
3929.3	0	0	0	0	1	1	0.00%
<b>Somerset</b>	<b>180</b>	<b>120</b>	<b>90</b>	<b>104</b>	<b>106</b>	<b>600</b>	<b>0.37%</b>
3929	180	119	90	104	106	599	0.37%
3929.3	0	1	0	0	0	1	0.00%
<b>Sullivan</b>	<b>1</b>	<b>0</b>	<b>4</b>	<b>3</b>	<b>0</b>	<b>8</b>	<b>0.00%</b>
3929	1	0	4	3	0	8	0.00%
<b>Susquehanna</b>	<b>12</b>	<b>16</b>	<b>6</b>	<b>5</b>	<b>19</b>	<b>58</b>	<b>0.04%</b>
3929	12	16	6	5	19	58	0.04%
<b>Tioga</b>	<b>58</b>	<b>48</b>	<b>29</b>	<b>38</b>	<b>73</b>	<b>246</b>	<b>0.15%</b>
3929	58	48	29	38	73	246	0.15%
<b>Union</b>	<b>107</b>	<b>47</b>	<b>98</b>	<b>54</b>	<b>94</b>	<b>400</b>	<b>0.25%</b>
3929	107	47	98	54	94	400	0.25%
<b>Venango</b>	<b>95</b>	<b>72</b>	<b>43</b>	<b>72</b>	<b>131</b>	<b>413</b>	<b>0.26%</b>
3929	95	72	43	72	131	413	0.26%
<b>Warren</b>	<b>103</b>	<b>124</b>	<b>230</b>	<b>232</b>	<b>127</b>	<b>816</b>	<b>0.50%</b>
3929	103	124	230	232	127	816	0.50%
<b>Washington</b>	<b>556</b>	<b>388</b>	<b>318</b>	<b>397</b>	<b>558</b>	<b>2,217</b>	<b>1.37%</b>
3929	556	388	318	397	558	2,217	1.37%
<b>Wayne</b>	<b>68</b>	<b>84</b>	<b>112</b>	<b>117</b>	<b>78</b>	<b>459</b>	<b>0.28%</b>
3929	68	84	112	117	78	459	0.28%
<b>Westmoreland</b>	<b>1,321</b>	<b>807</b>	<b>753</b>	<b>1,014</b>	<b>955</b>	<b>4,850</b>	<b>3.00%</b>
3929	1,318	807	753	1,012	955	4,845	2.99%
3929.2	0	0	0	1	0	1	0.00%
3929.3	3	0	0	1	0	4	0.00%
<b>Wyoming</b>	<b>52</b>	<b>24</b>	<b>26</b>	<b>32</b>	<b>14</b>	<b>148</b>	<b>0.09%</b>
3929	52	24	26	32	14	148	0.09%
<b>York</b>	<b>1,292</b>	<b>777</b>	<b>673</b>	<b>1,046</b>	<b>1,498</b>	<b>5,286</b>	<b>3.26%</b>
3929	1,287	775	673	1,044	1,498	5,277	3.26%
3929.3	5	2	0	2	0	9	0.01%
<b>Grand Total</b>	<b>38,952</b>	<b>27,811</b>	<b>24,855</b>	<b>32,327</b>	<b>37,962</b>	<b>161,907</b>	<b>N/A</b>

