



A New Life for a Former Gold & Copper Mine in Quebec

# The Troilus Project

SCALE  
JURISDICTION  
LONG LIFE

TSX: **TLG** OTCQX: **CHXMF** FRA: **CM5R**

Corporate Presentation  
October 2021



# CAUTIONARY LANGUAGE, QP STATEMENTS AND LEGAL DISCLAIMERS

Mineral Resources that are not Mineral Reserves do not have demonstrated economic viability. There is no certainty that the Indicated Mineral Resources will be converted to the Probable Mineral Reserve category, and there is no certainty that the updated Mineral Resource statement will be realized.

The mineral resource estimates contained herein may be subject to legal, political, environmental or other risks that could materially affect the potential development of such mineral resources. See the Resources Report filed on SEDAR (or the Technical Report, once filed), for more information with respect to the key assumptions, parameters, methods and risks of determination associated with the foregoing.

The PEA is preliminary in nature, includes inferred mineral resources that are considered too speculative geologically to have the economic considerations applied to them that would enable them to be categorized as mineral reserves, and there is no certainty that the PEA will be realized. Mineral resources that are not mineral reserves do not have demonstrated economic viability. The PEA is subject to a number of risks and uncertainties. See below and the Technical Report, once filed, for more information with respect to the key assumptions, parameters, methods and risks of determination associated with the foregoing.

The Troilus project has not been the subject of a current feasibility study and as such there is no certainty that a potential mine will be realized. There is a significant risk that any production from the project will not be profitable with these risks elevated by the absence of a compliant NI 43-101 feasibility study.

The mineral resource estimate disclosed in this presentation was prepared by Mr. Paul Daigle, géo., Senior Associate Resource Geologist with AGP, and the supporting Technical Report was filed on SEDAR ([www.sedar.com](http://www.sedar.com)) under the Company's issuer profile on August 28, 2020. Mr. Paul Daigle, who is an independent Qualified Person as defined under NI 43-101, has reviewed and approved the mineral resource estimate disclosed in this presentation.

The technical and scientific information in this presentation has been reviewed and approved by Kyle Frank, Senior Geologist for Troilus, who is a Qualified Person as defined by NI 43-101. Mr. Frank has also verified the technical data contained in this presentation using industry accepted standards. Mr. Frank is an employee of Troilus and is not independent of the Company under NI 43-101.

The PEA was prepared under the direction and supervision of Gord Zurowski, P. Eng Principal Mining Engineer with AGP. The PEA report is available on SEDAR ([www.sedar.com](http://www.sedar.com)) under the Company's issuer profile or on its website, [www.troilusgold.com](http://www.troilusgold.com).

This presentation contains "forward-looking statements" within the meaning of applicable Canadian securities legislation. Forward-looking statements include, but are not limited to, the results of the PEA, statements regarding the impact and implications of the economic statements related to the PEA, such as future projected production, costs, including without limitation, AISC, total cash costs, cash costs per ounce, capital costs and operating costs, statements with respect to Mineral Resource estimates, recovery rates, IRR, NPV, mine life, CAPEX, payback period, sensitivity analysis to gold prices, timing of future studies including the pre-feasibility study, environmental assessments (including the timing of an environmental impact study) and development plans, the Company's understanding of the project; the development potential and timetable of the project; the potential to extend mine life beyond the period contemplated in the PEA, opportunity to expand the scale of the project, the project becoming a cornerstone mining project in Quebec and Canada, the estimation of mineral resources; realization of mineral resource estimates; the timing and amount of estimated future exploration; the anticipated results of the Company's planned 2020 drill program and their possible impact on the potential size of the mineral resource estimate; costs of future activities; capital and operating expenditures; success of exploration activities; the anticipated ability of investors to continue benefiting from the Company's low discovery costs, technical expertise and support from local communities; and the anticipated timing of filing the Technical Report. Generally, forward-looking statements can be identified by the use of forward-looking terminology such as "plans", "expects" or "does not expect", "is expected", "budget", "scheduled",

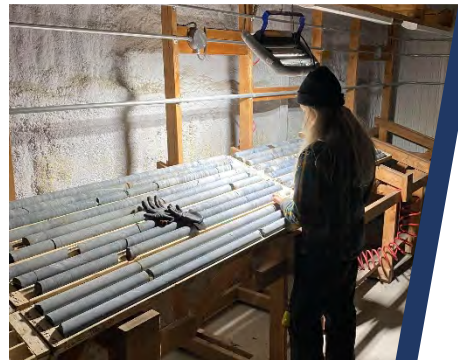
"estimates", "forecasts", "intends", "contemplates", "goal", "continue", "anticipates" or "does not anticipate", or "believes", or variations of such words and phrases or statements that certain actions, events or results "may", "could", "would", "will", "might" or "will be taken", "occur" or "be achieved". Forward-looking statements are made based upon certain assumptions and other important facts that, if untrue, could cause the actual results, performances or achievements of Troilus to be materially different from future results, performances or achievements expressed or implied by such statements. Such statements and information are based on numerous assumptions regarding present and future business strategies and the environment in which Troilus will operate in the future. Certain important factors that could cause actual results, performances or achievements to differ materially from those in the forward-looking statements include, amongst others, currency fluctuations, the global economic climate, dilution, share price volatility and competition. Forward-looking statements are subject to known and unknown risks, uncertainties and other important factors that may cause the actual results, level of activity, performance or achievements of Troilus to be materially different from those expressed or implied by such forward-looking statements, including but not limited to: the impact the COVID 19 pandemic may have on the Company's activities (including without limitation on its employees and suppliers) and the economy in general; the impact of the recovery post COVID 19 pandemic and its impact on gold and other metals; there being no assurance that the exploration program or programs of the Company will result in expanded mineral resources; risks and uncertainties inherent to mineral resource estimates; the high degree of uncertainties inherent to preliminary economic assessments and other mining and economic studies which are based to a significant extent on various assumptions; variations in gold prices and other precious metals, exchange rate fluctuations; variations in cost of supplies and labour; receipt of necessary approvals; general business, economic, competitive, political and social uncertainties; future gold and other metal prices; accidents, labour disputes and shortages; environmental and other risks of the mining industry, including without limitation, risks and uncertainties discussed in the latest annual information form of the Company, in the Resources Report (and the Technical Report to be filed) and in other continuous disclosure documents of the Company available under the Company's profile at [www.sedar.com](http://www.sedar.com). Although Troilus has attempted to identify important factors that could cause actual results to differ materially from those contained in forward-looking statements, there may be other factors that cause results not to be as anticipated, estimated or intended. There can be no assurance that such statements will prove to be accurate, as actual results and future events could differ materially from those anticipated in such statements. Accordingly, readers should not place undue reliance on forward-looking statements. Troilus does not undertake to update any forward-looking statements, except in accordance with applicable securities laws.

## Cautionary Note to U.S. Investors Concerning Estimates of Mineral Resources

Mineral resource estimates have been prepared in accordance with the requirements of Canadian securities laws, which differ from the requirements of U.S. securities laws. The terms "mineral resource", "measured mineral resource", "indicated mineral resource" and "inferred mineral resource" are defined in NI 43-101 and recognized by Canadian securities laws but are not defined terms or recognized under U.S. securities laws. U.S. investors are cautioned not to assume that any part or all of mineral deposits in these categories will ever be upgraded to mineral reserves. "Inferred mineral resources" have a great amount of uncertainty as to their existence, and great uncertainty as to their economic and legal feasibility. It cannot be assumed that all or any part of an "inferred mineral resource" will ever be upgraded to a higher category. Under Canadian securities laws, estimates of "inferred mineral resources" may not form the basis of feasibility or pre-feasibility studies. U.S. investors are cautioned not to assume that all or any part of an inferred mineral resource exists or is economically or legally mineable. Accordingly, these mineral resource estimates and related information may not be comparable to similar information made public by U.S. companies subject to the reporting and disclosure requirements under the U.S. federal securities laws and the rules and regulations thereunder.

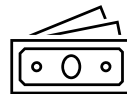
# TROILUS GOLD CORP. IS GENERATING VALUE BY RESPONSIBLY DEVELOPING THE PAST-PRODUCING GOLD-COPPER TROILUS PROJECT

THE LARGEST UNDEVELOPED GOLD DEPOSIT IN QUEBEC, CANADA



## ESG Leadership

First mineral exploration company to obtain ECOLOGO certification



## Strong Cash Position

CAD\$56 million raised in June/July 2021



## Located in Top Ranked Mining Jurisdiction

Quebec ranked #6 globally by the Fraser Institute in 2020



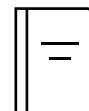
## Quality Brownfield Project

US\$350M of inherited infrastructure; streamlined permitting



## Large and Growing Resource

- 4.96 Moz AuEq (Ind.), plus 3.15 Moz AuEq (Inf.)\*
- Updated mineral resource expected in Q4 2021



## Robust PEA; Pre-Feasibility underway

PEA results place Troilus among the top 5 gold producers in Canada today



## Experienced & Credible Management

Proven track-record of generating value

# FAST-PACED ADVANCEMENT SINCE ACQUISITION

Delivering on our vision to become Quebec's next multi-decade gold-copper producer

## 2017-2021: UNLOCKING VALUE & DE-RISKING

- ✓ **EXPLORATION SUCCESS:** Disciplined exploration (+150,000m), translating to significant mineral growth and evidence of a district scale, generational asset.
- ✓ **ROBUST ENGINEERING:** Initial drilling to robust PEA in under 2 yrs. Inaugural Reserve and Pre-Feasibility underway, targeting a long-life open-pit mine producing +220,000oz AuEq/yr.\*
- ✓ **LEADERSHIP TEAM:** Assembled an experience and proven team to build the Troilus mine
- ✓ **STAGE of DEVELOPMENT:** Federal permitting process initiates in Q4 2021

2017	2018	2019	2020	2021	2022
<p><b>Acquisition of Brownfield Troilus Project in Dec. 2017</b></p> <p>(From 1996-2010, the Troilus Mine produced +2Moz of gold and ~70,000t of copper)</p>	<ul style="list-style-type: none"> <li>• TSX Listing</li> <li>• Drilling initiated</li> <li>• Pre-Development Agreement Signed with Cree Nation</li> <li>• Mineral Resources increase 85%</li> </ul>	<ul style="list-style-type: none"> <li>• Significant expansion of J Zone &amp; Z87 South</li> <li>• Resources increase by another 27%</li> <li>• Discovery &amp; initial drilling of Southwest Zone</li> </ul>	<ul style="list-style-type: none"> <li>• Southwest expansion</li> <li>• Resources increase by another 20%</li> <li>• Robust PEA</li> <li>• Successful regional exploration on expanded property</li> <li>• Dewatering permit (Z87 &amp; J4 pits)</li> </ul>	<ul style="list-style-type: none"> <li>• Acquired UrbanGold</li> <li>• Appointed industry veteran as COO</li> <li>• ~10,000m of drilling/month</li> </ul> <p><i>UPCOMING:</i></p> <ul style="list-style-type: none"> <li>• Initiate Federal permitting process</li> <li>• Inaugural Reserve</li> </ul>	<ul style="list-style-type: none"> <li>• Pre-Feasibility Study (Q1)</li> <li>• Initiate Provincial Permitting Process</li> <li>• Feasibility Study (H2)</li> <li>• Construction decision by end of year</li> </ul>



# LEADERSHIP TEAM IN PLACE TO ADVANCE TROILUS MINE RESTART

## Experienced Engineering Team, includes:

### Richard Harrisson, COO

- Most recently oversaw the engineering and pre-development of the \$1.7 billion Odyssey Project for Canadian Malartic from conception through to the current construction.
- Former Mining Director at Premier Gold Mines where he led the Feasibility Study for the Greenstone open pit project
- He also held a number of positions with Agnico Eagle including Engineering Superintendent at Goldex Mine in Val d'Or, Project Evaluation Engineer at CTMN and Underground Mine Manager at the Kittila Mine in Finland.


### Jacqueline Leroux, VP Environment & Permitting

- Metallurgical engineer with +20 yrs of experience
- Formerly held senior positions at Goldcorp, Mason Graphite, and BlackRock Metals where she was responsible for exploration permits, environmental assessment processes and construction permits.

## Management Team

**Justin Reid**, *President & CEO, Director*

**Richard Harrisson**, *COO* 

**Denis Arsenault**, *CFO/SVP Qc.* 

**Blake Hylands**, *SVP Exploration & Corp. Development*

**Ian Pritchard**, *SVP Technical Services*


**Jacqueline Leroux**, *VP Environment & Permitting* 


**Catherine Stretch**, *VP Corporate Affairs*

**Brianna Davies**, *VP Legal & Corporate Secretary*

**Caroline Arsenault**, *VP Corporate Communications*

**Daniel Bergeron**, *VP Quebec Operations* 

**John Matoush**, *Community Liaison Mistissini* 

**Kyle Frank**, *Senior Geologist* 

## Board of Directors

**Diane Lai**, ICD.D, MBA – *Chairperson*

Seasoned executive and entrepreneur with +20 yrs of global marketing experience

**Andrew Mark Cheatle**, P.Geo. FGS, MBA

30 yrs of international mining experience; consulting Geologist; former CEO of PDAC

**Jamie Horvat**, M.Sc.

+20 yrs of experience in asset management, particularly resources and precious metals

**Hon. Pierre Pettigrew**, p.c.

Former Minister of Foreign Affairs to three Prime Ministers; current Executive Advisor at Deloitte

**Dr. John Hadjigeorgiou**, PhD, P.Eng, FCIM, ICD.D

Pierre Lassonde Chair in Mining Engineering at UofT; consultant to many major mining companies

**Dr. Eric Lamontagne**, Eng.PhD.

Former Superintendent of the Troilus mine; GM Greenstone JV (Equinox Gold/Orion)

**Thomas Olesinski**, CPA, CMA

20 years of finance and management experience; former forensic accountant

**Justin Reid**, M.Sc., MBA

Geologist and capital markets executive with +20 yrs of experience in the mineral resource space

# COMMITTED TO THE RESPONSIBLE DEVELOPMENT OF OUR PROJECT

We are committed to creating value for our shareholders while operating in a safe, socially and environmentally responsible manner.

## 2020-2021 ESG MILESTONES

Sustainable Development Policy implemented at Troilus in 2020, focuses on four pillars:

- **People**
- **Environment**
- **Health & Safety**
- **Communities**

Implementation of the ONYEN ESG Reporting System in 2020

*Internationally recognized reporting standards*



Recipient of the 2020

***EXCELLENCE IN  
SUSTAINABLE  
DEVELOPMENT AWARD***

presented annually by the  
Quebec Mineral Exploration  
Association (AEMQ).



**ECOLOGO Certification  
in August 2020**

Troilus proudly became the first  
company to obtain certification  
for UL 2723 Certification Program  
for Responsible Development for  
Mineral Exploration



**Inaugural ESG Report  
launched in 2021.**

[troilusgold.com/sustainability](https://troilusgold.com/sustainability)



83% of energy used at the  
Troilus site comes from  
renewable sources



30% of senior management  
and Chair of the Board are  
women



90% of water used at site is  
reused and recycled



Zero work related  
injuries at site



Local suppliers made up 62%  
of procurement spending



# LOCATED IN ONE OF THE WORLD'S BEST MINING JURISDICTIONS



- Low-cost operation location
- Quebec is ranked 6th globally on the “Investment Attractiveness Index”\*
- Established regulatory and permitting framework
- Access to qualified mining labour, suppliers & contractors



Chibougamau (~170km south of Troilus)



**Abundant, low-cost and clean energy.**  
83% of energy currently used at the Troilus site comes from renewable sources.

Fair and stable  
taxation system

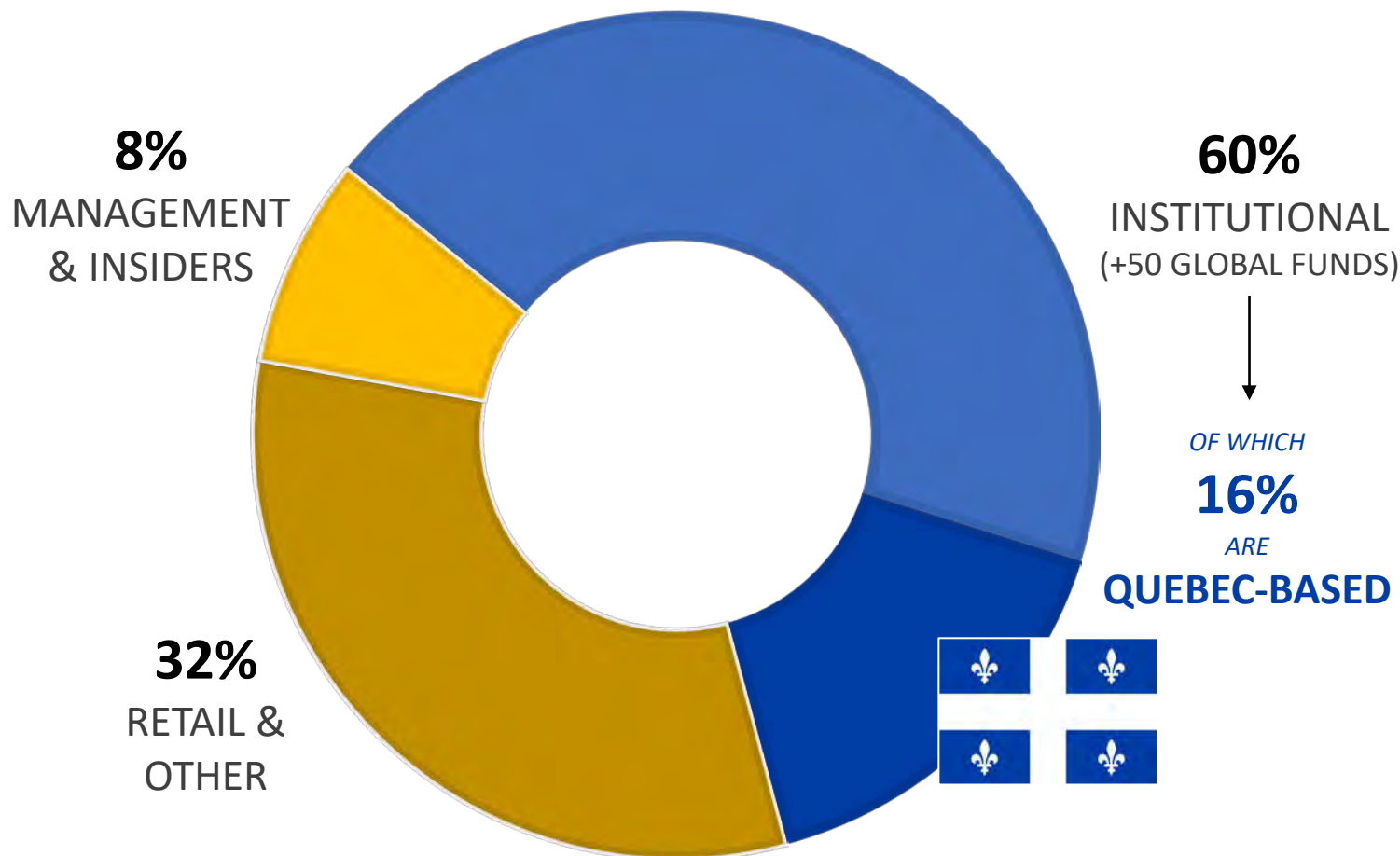
Strong collaborative efforts  
between Governments and  
mining industry to support  
mineral development

**Financial participation in mining  
projects by Government**  
Investment arms of the Qc. Gov.  
own ~12% of Troilus shares.

Quebec vision to develop the  
North in cooperation with First  
Nations and local communities

# STRONG & SUPPORTIVE SHAREHOLDER BASE

Committed, Long-Term Shareholders & Partnerships



## Strategic Partnership with the Quebec Government

- \$11.15 million invested in Troilus in July 2021 through *Investissement Québec*
- Defines a long-term strategic framework focused on outlining and establishing full project financing options for the development of the Troilus Project

*The mining potential of Nord-du-Québec and our mining industry are key to the sustainable recovery of Québec's economy. That's why we are helping Troilus carry out its gold project, which is expected to generate significant economic benefits and create good jobs in the region.*

**Eric Girard**

*Minister of Finance & Minister of Economy and Innovation*

*We are proud to support the development of this promising gold project, led by a strong team. Troilus activities have a significant impact on employment and on the economy of the Nord-du-Québec region and we are pleased to help solidify the financial health of the company to allow it to continue its activities and carry out its project.*

**Dany Pelletier**

*Chief Investment Officer of the Fonds de solidarité FTQ*



# SOUND CAPITAL STRUCTURE & STRONG CASH POSITION



## WORKING CAPITAL (C\$)

**\$48.6 million**

*\*Unaudited financial position, as at Sept. 1, 2021.  
As at FQ3 ending April 30, 2021, cash position of ~\$10M*

Debt: Nil

## SHARE PERFORMANCE (C\$)

52-week high/low

**\$0.82-\$1.82**

Market Cap. 09/01/21

**~\$160 million**

## CAPITAL STRUCTURE

Basic Shares Outstanding

**196,236,839**

Options **280,040**  
*250,000 @ \$1.64, exp. Jan. 3, 2023  
30,040 @ \$0.88, exp. Oct 1, 2022*

RSUs **9,666,659**

Warrants **37,534,558**  
*12,075,000 @ \$1.50; June 23, 2022  
56,189 @ \$0.42; Dec. 6, 2021  
124,015 @ \$0.50; Dec 6, 2021  
240,320 @ \$0.60; Sept. 17, 2021  
2,258,106 @ \$0.67; June 3, 2023  
1,251,666 @ \$1.20; Sept. 10, 2023  
16,461,079 @ \$1.50; June 30, 2023  
5,068,179 @ \$1.50; July 15, 2023*

Fully Diluted **243,718,096**

## ANALYST COVERAGE

**Richard Gray**  
*Cormark*

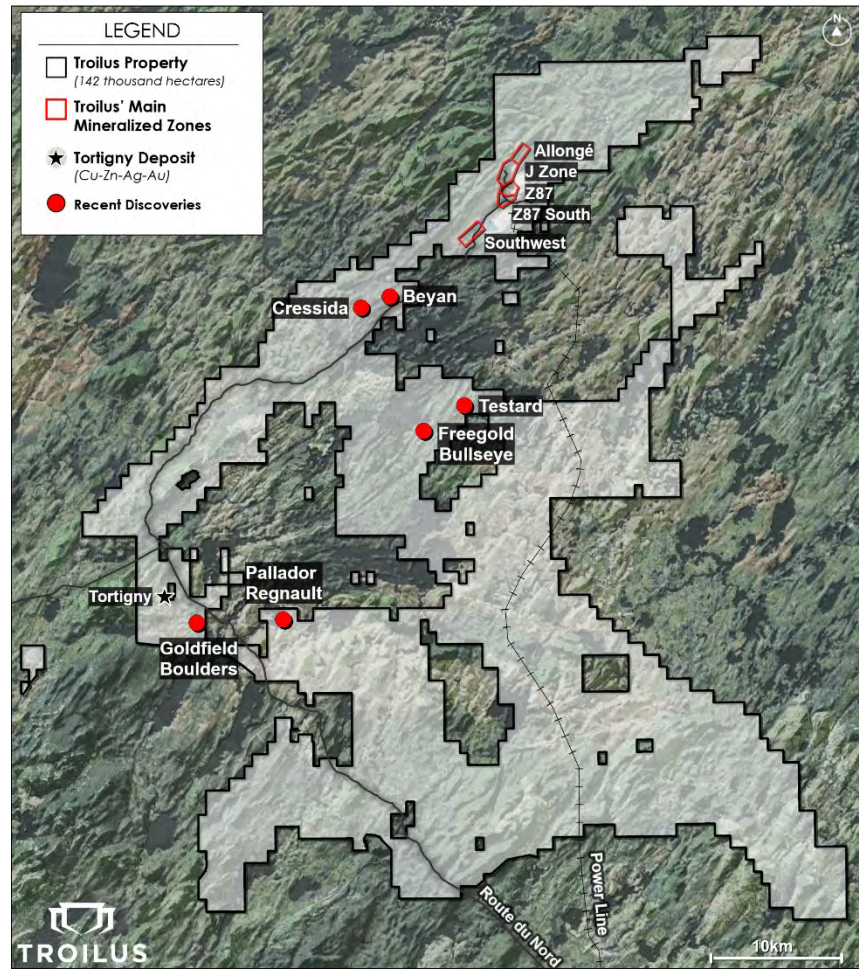
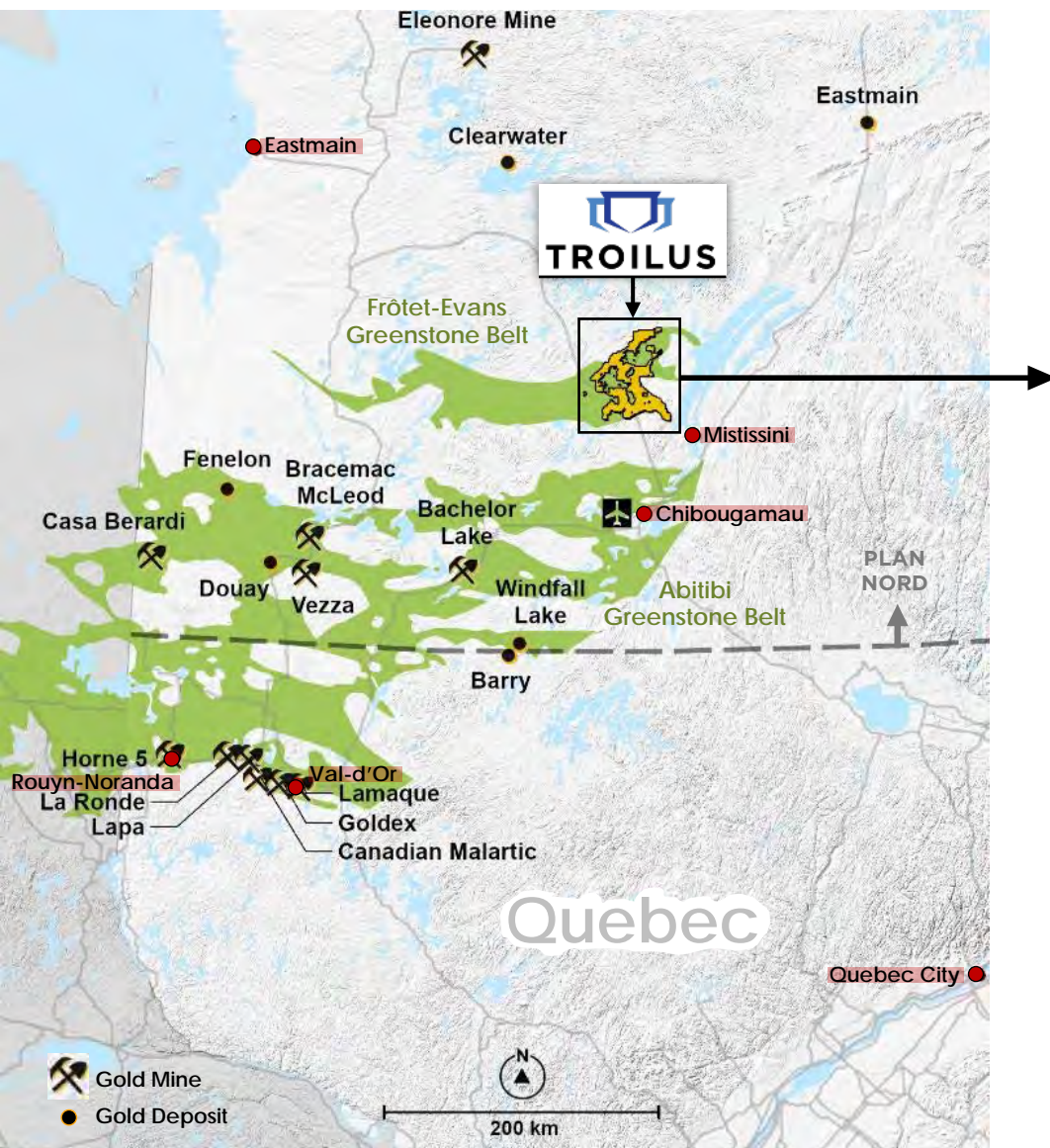
**Ian Parkinson**  
*Stifel/GMP*

**Tom Gallo**  
*Canaccord*

**Jacques Wortman**  
*Laurentian Bank*

**Pierre Vaillancourt**  
*Haywood*

# STRATEGIC LAND POSITION IN A HIGHLY PROSPECTIVE GREENSTONE BELT



**142,000 hectares  
(1,420 km<sup>2</sup>) of  
contiguous land in  
the Frôlet-Evans  
Greenstone Belt**

*Land position strategically  
increased 2,800% since  
acquisition of 4,700 ha  
property in 2017.*

*Driven by our belief in the  
district-scale potential of the  
mineral system in this area.*

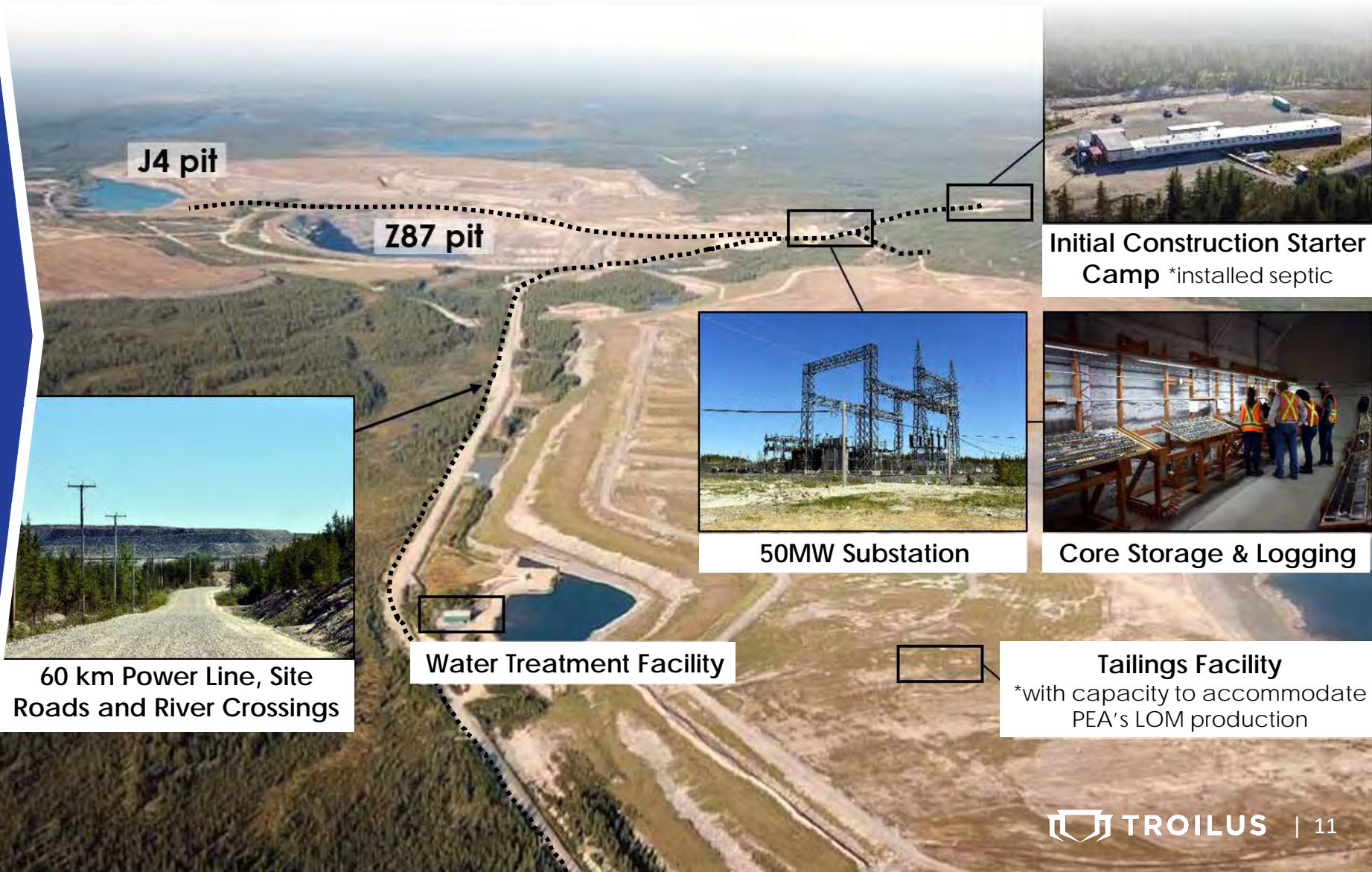




BROWNFIELD ADVANTAGE

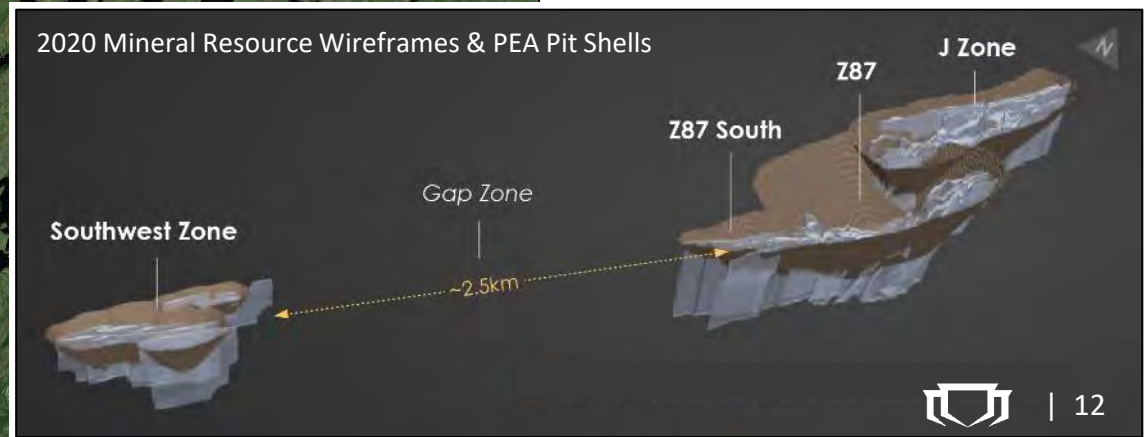
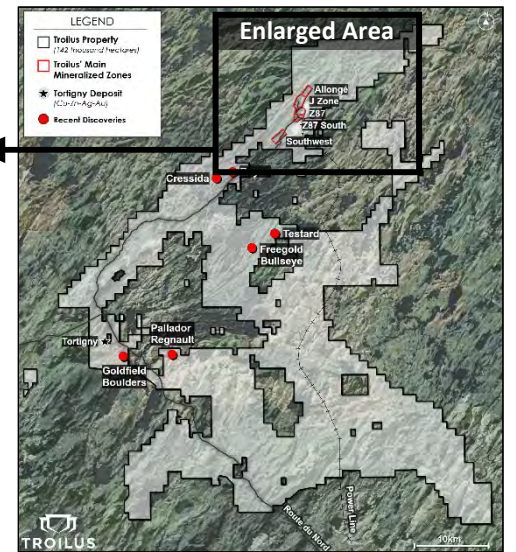
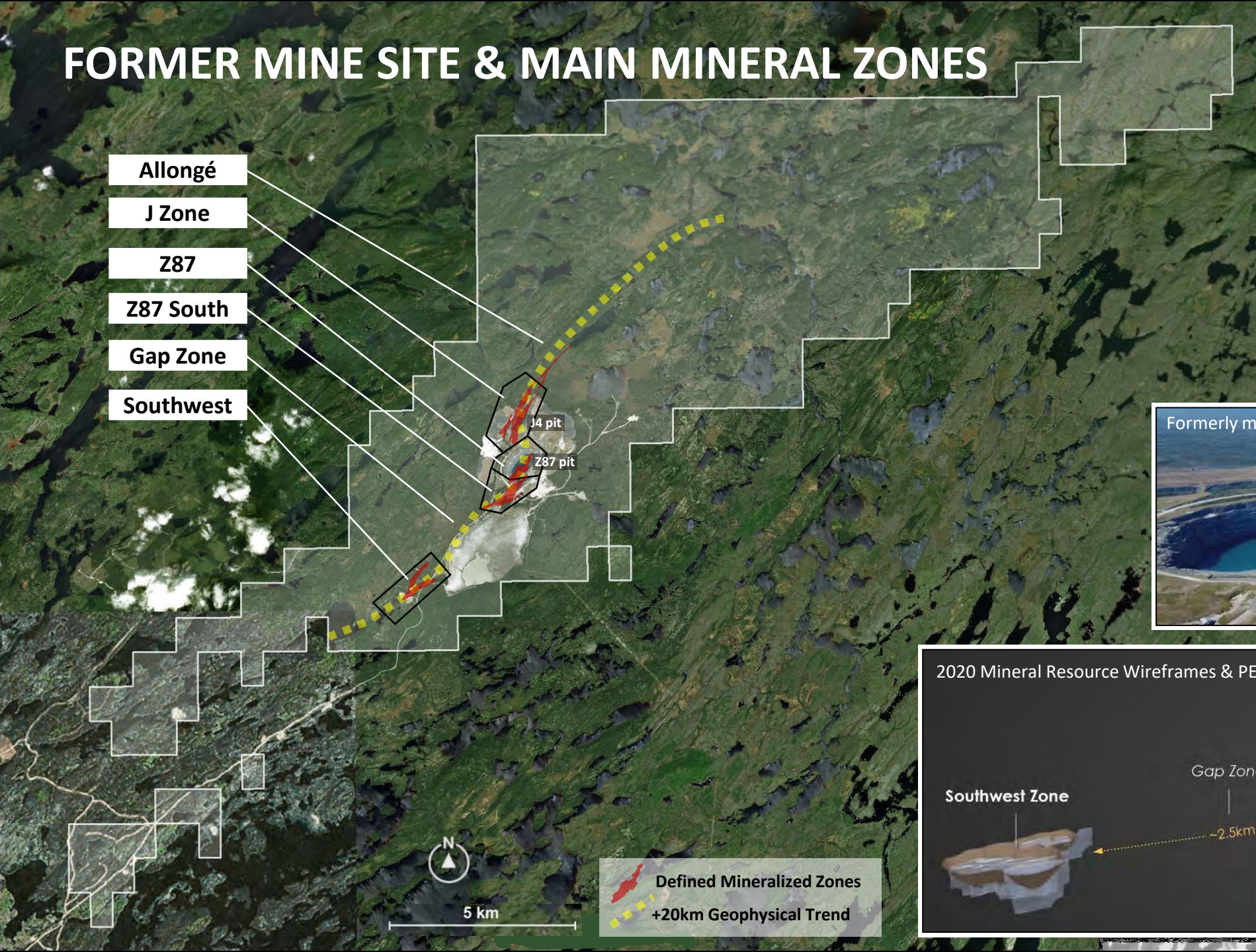
APPROX.

**US\$350 MILLION  
OF INHERITED VALUE**





# FORMER MINE SITE & MAIN MINERAL ZONES

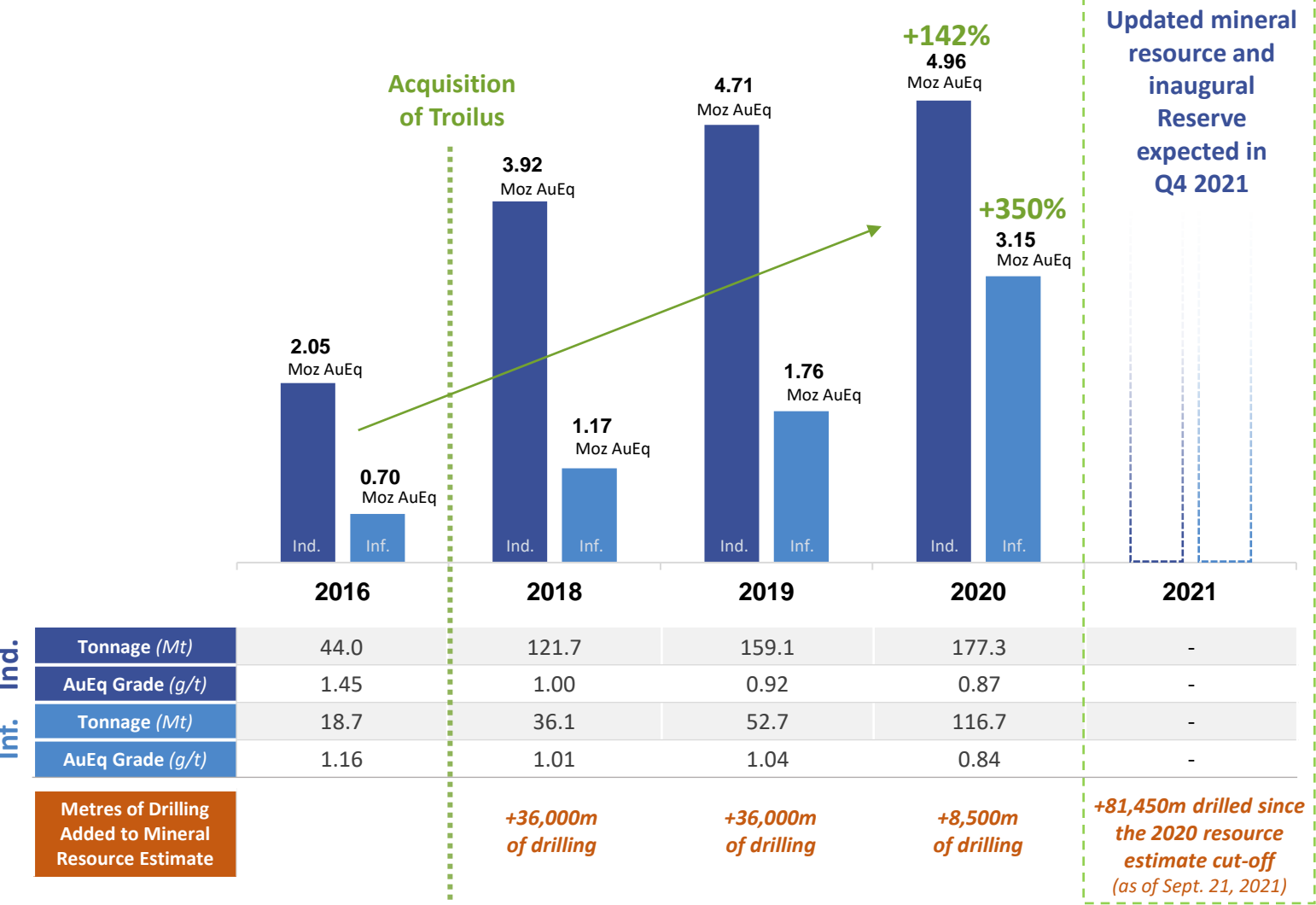




# TRACK-RECORD OF MINERAL RESOURCE GROWTH

+150,000 metres drilled since 2018; finding costs of <\$5/oz

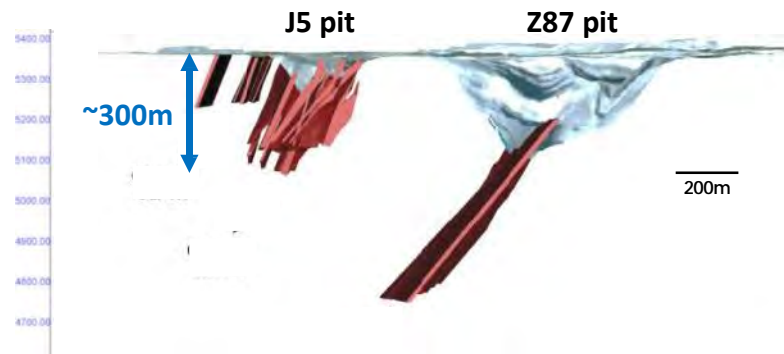
+74,300m not included in the 2020 resource (as of Aug 17, 2021)



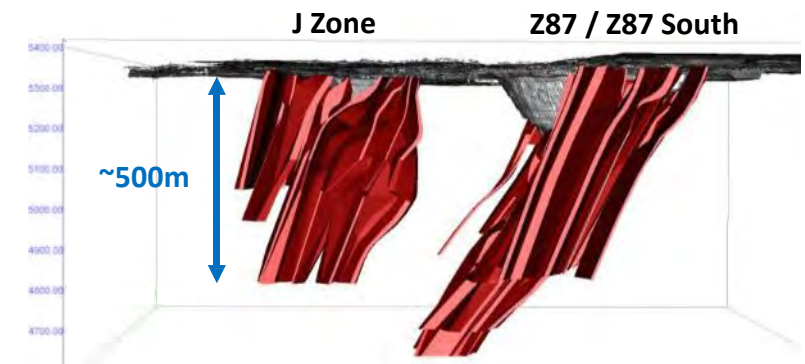
# THE BEST PLACE TO FIND GOLD IS WHERE GOLD WAS PRODUCED



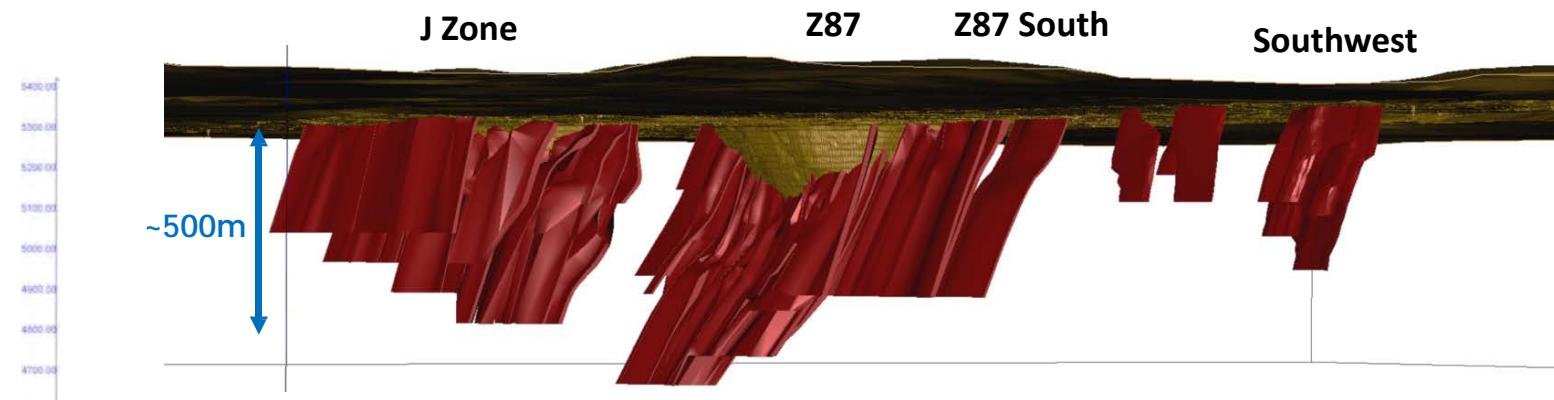
## 2016 *INHERITED RESOURCE*



## 2019 *NEAR-PIT GROWTH*



## 2020 *EXTENSIVE MINERAL SYSTEM UNCOVERED*





# 2018-2021 NEAR-PIT RESOURCE EXPANSION

## Main Mineral Corridor, Long Section Facing Northwest

### SOUTHWEST ZONE - GAP ZONE

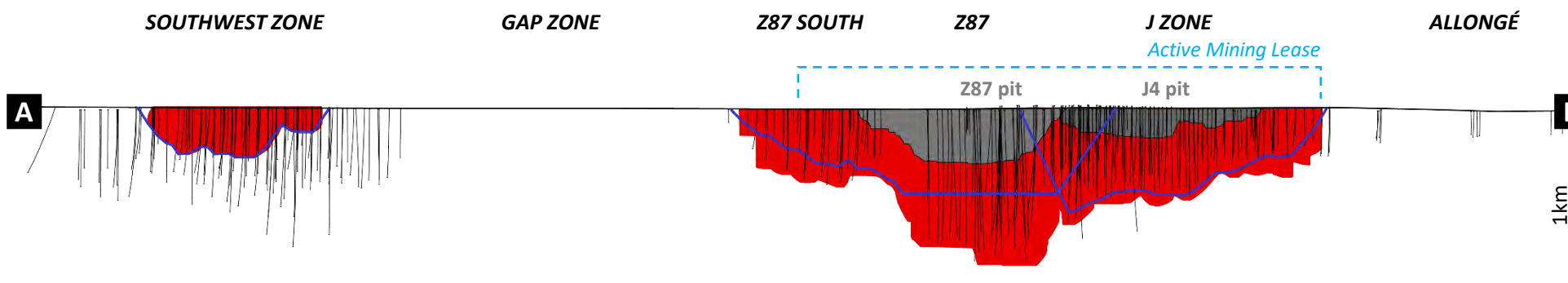
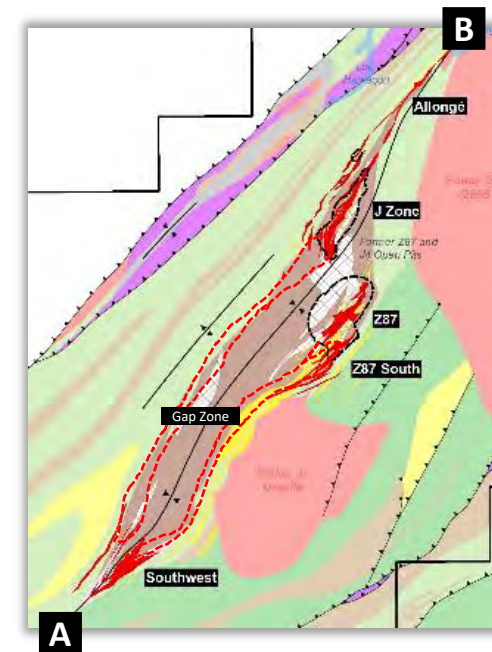
- New discovery late 2019/early 2020
- Similar geology to Z87
- Accessible via road
- Priority growth target; multi-million oz potential

### Z87 SOUTH - Z87 - J ZONE

- Formerly mined pits
- Significant near pit expansion
- Remains open on strike & at depth
- Infill & expansion drilling underway

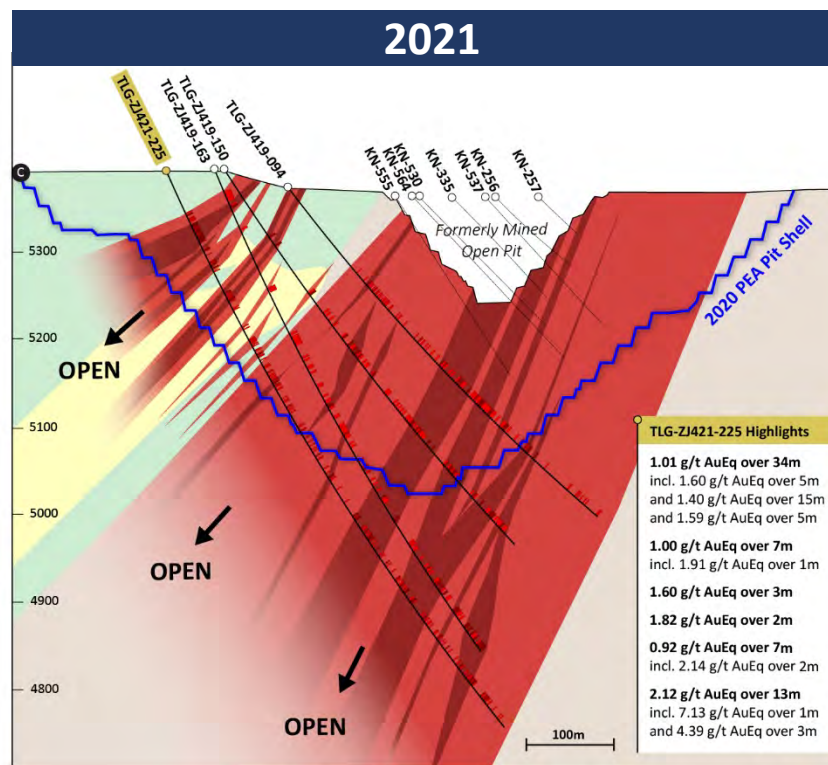
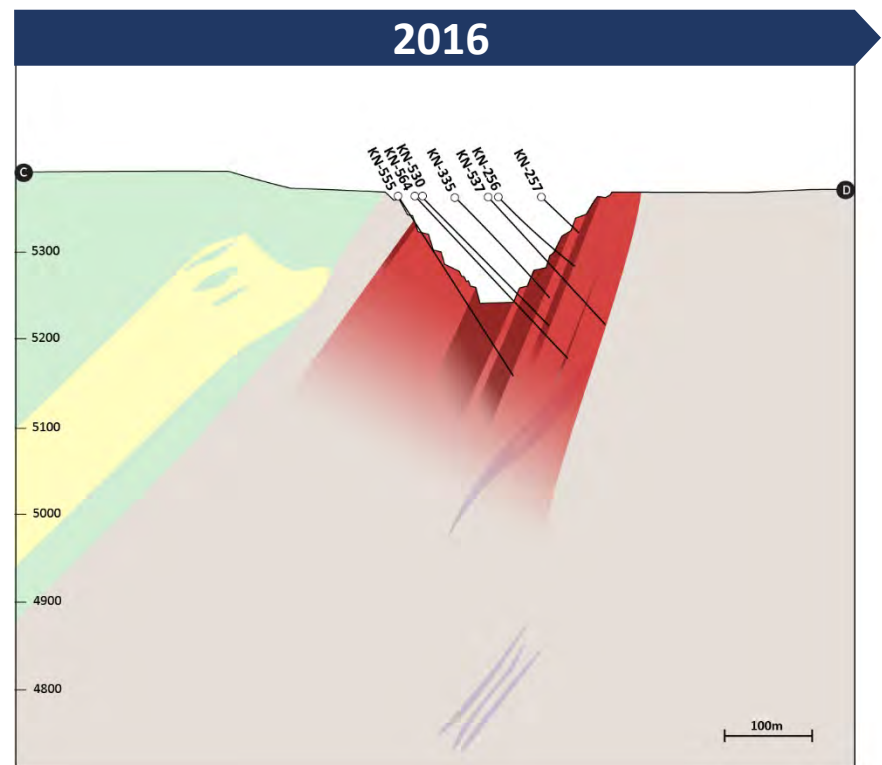
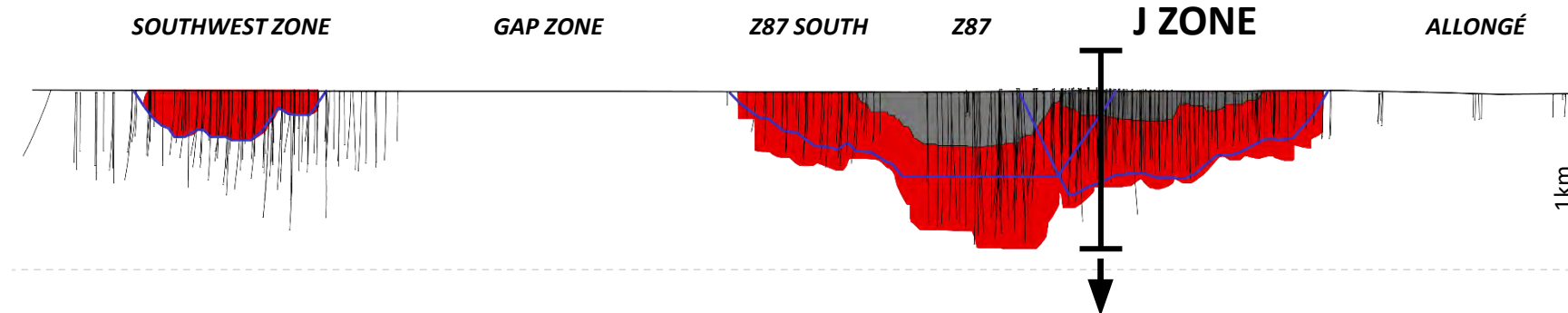
### ALLONGÉ

- 110 g/t Au grab sample (Dec. 2018)
- Near-term growth target



- 2020 Resource Envelope
- PEA Pit Shell (2020)
- 2018-2021 Holes Drilled

# TYPICAL CROSS-SECTION: THEN AND NOW



## J ZONE HIGHLIGHTS

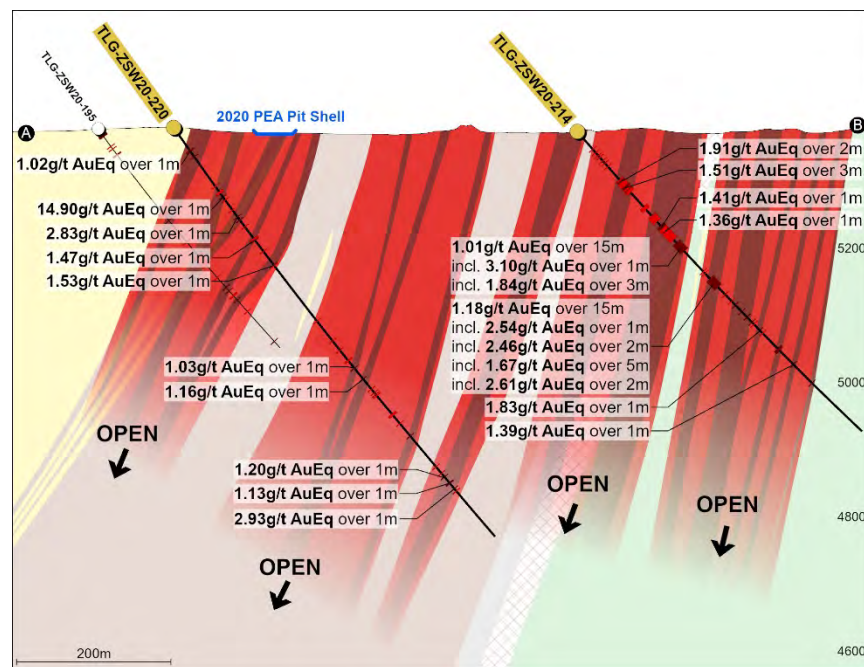
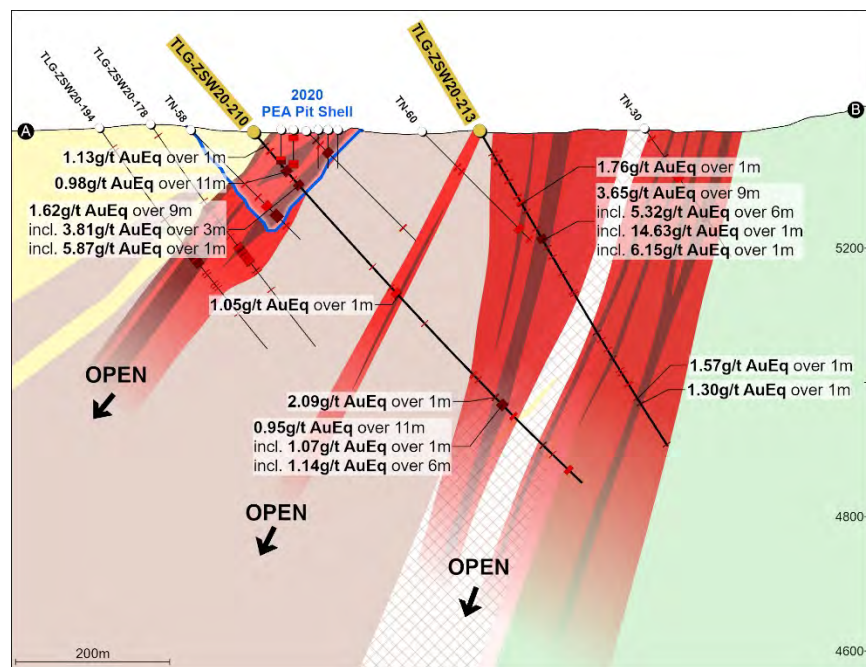
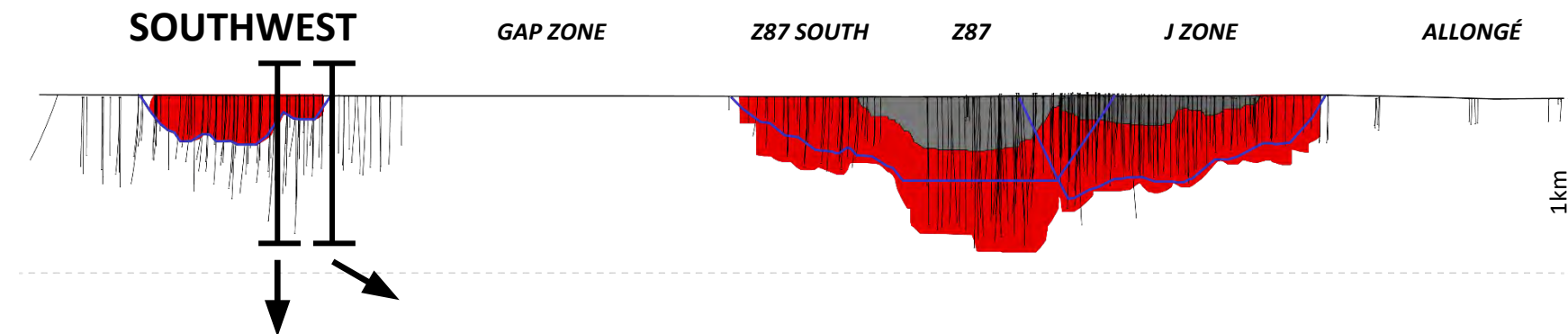
New parallel zone of mineralization identified over a strike length of ~1.6km, primarily within undrilled areas of the PEA pit shell

### DRILL HIGHLIGHTS:

- 2.10 g/t AuEq/31m, incl. 4.40 g/t AuEq/12
- 1.57 g/t AuEq/31m, incl. 4.72 g/t AuEq/7m and 22.51 g/t AuEq/1m
- 2.24 g/t AuEq/8m, incl. 5.06 g/t/3m
- 1.60 g/t AuEq/13m, incl. 3.2 g/t /3m
- 1.19 g/t AuEq/19m, incl. 3.3 g/t /4m
- 1.51 g/t AuEq/19m, incl. 2.3 g/t/8m
- 1.43 g/t AuEq/19.3m, incl. 1.7 g/t/3m and 2.29 g/t/4.5m
- 1.48 g/t AuEq/11m
- 1.21 g/t AuEq/23m, incl. 2.5 g/t/7m
- 1.10 g/t AuEq/68m, incl. 1.65 g/t/10m
- 2.23 g/t AuEq/3m



# NEW DISCOVERY: SOUTHWEST ZONE



## SOUTHWEST HIGHLIGHTS

New discovery initially drilled in late 2019.

Among best results ever drilled at Troilus.

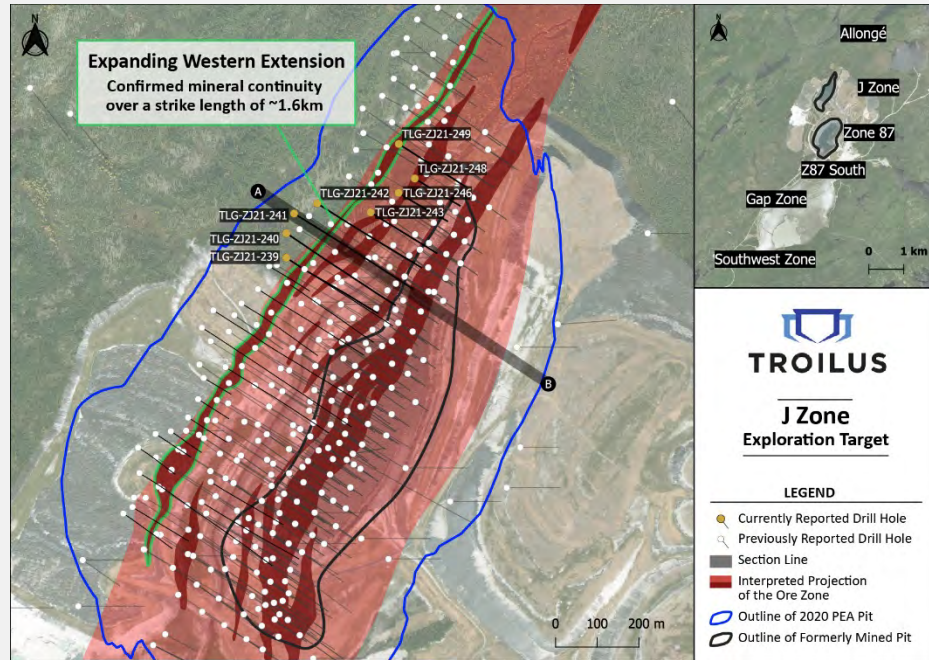
~1.5km strike length & remains open

### DRILL HIGHLIGHTS:

- 3.58 g/t AuEq over 15m, incl. 6.76 g/t over 7m
- 1.56 g/t AuEq over 73m, including 2.05 g/t over 48m
- 1.95 g/t AuEq over 20m, incl. 2.73 g/t AuEq over 9m
- 3.65 g/t AuEq over 9m, incl. 5.32 g/t AuEq over 6m
- 1.74 g/t AuEq over 21m, incl. 2.48 g/t AuEq over 6m and 2.5 g/t AuEq over 5m
- 6.66 g/t AuEq over 3m

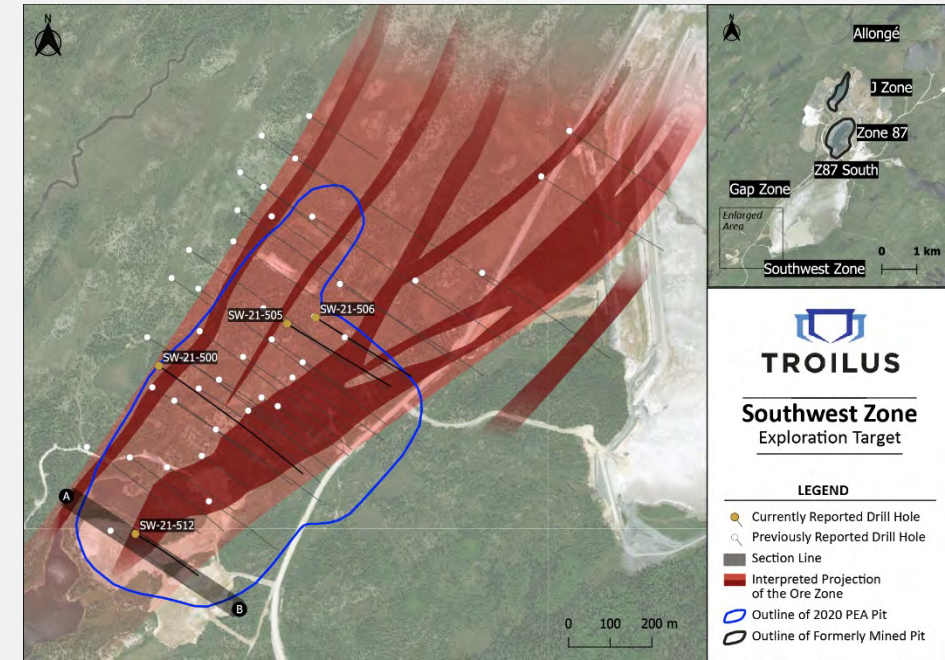
# MAJOR TECHNICAL ADVANCEMENTS IN 2020/2021

## J ZONE HANGING WALL



- New parallel zone of mineralization confirmed over strike length of ~1.6km
- Expected positive impact on upcoming PFS: New zone primarily located within undrilled areas of the PEA pit
- Remains open on strike and at depth

## SOUTHWEST ZONE EXPANSION



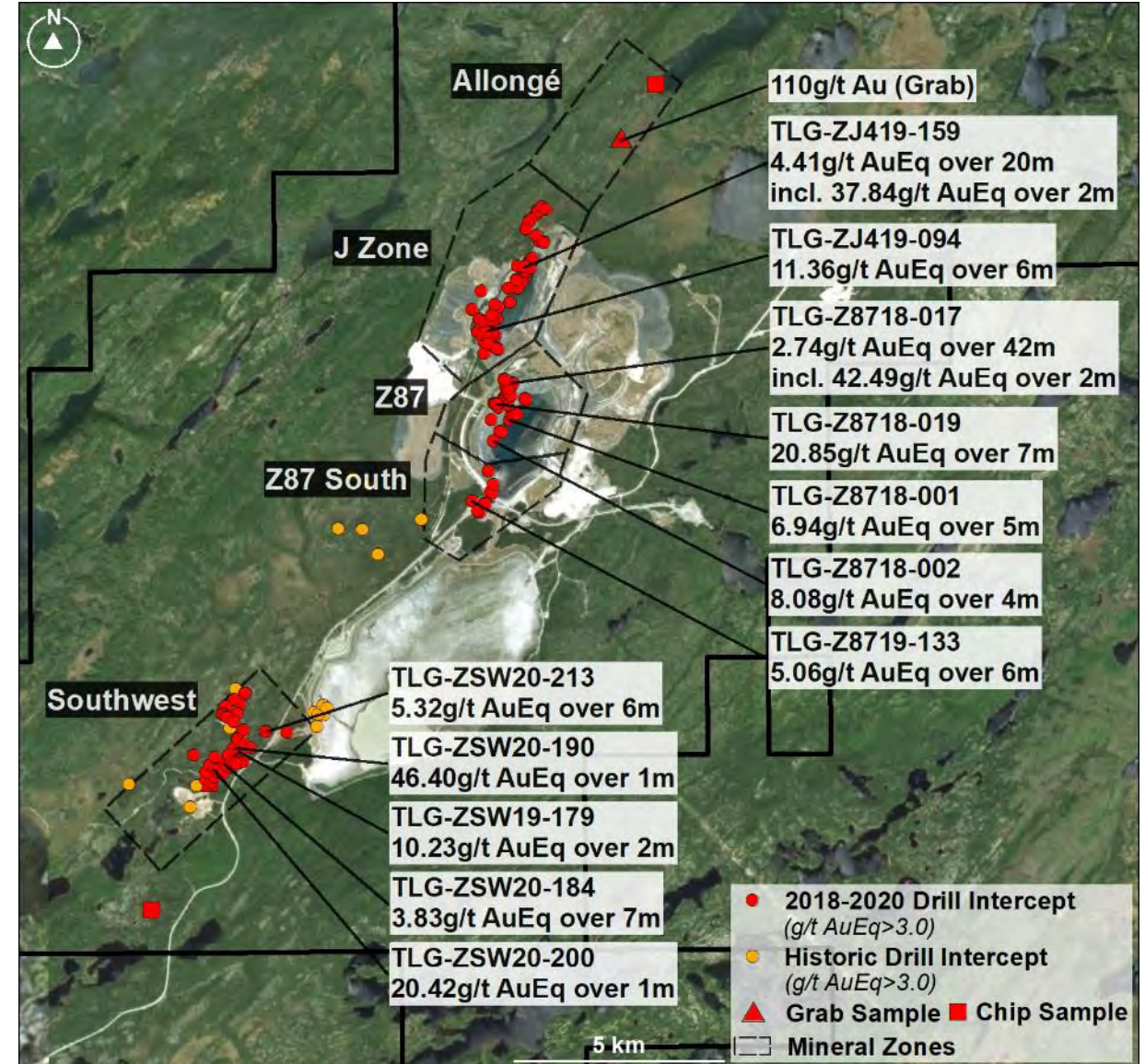
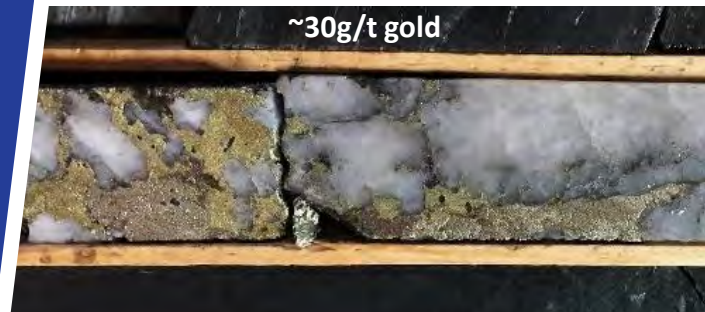
- Similar geology to main zone Z87
- Higher-grade zone than rest of deposit:  
Hole ZSW21-512  
3.58 g/t AuEq over 15m, incl. 6.76 g/t over 7m  
Hole ZSW20-189  
1.56 g/t AuEq over 73m, incl. 2.05 g/t over 48m
- Remains open
- Multi-million-ounce potential



# HIGH GRADE AT TROILUS

High-grade gold system associated with fold and shear patterns within a broad base ~1g/t deposit.

*Identifiable and predictable throughout the deposit.*





## 1 ALLONGÉ

110 g/t Au grab sample (2018)

## 2 BEYAN / CRESSIDA

**Drill results:**  
1.62 g/t Au/ 34m  
1.23 g/t Au/ 21m  
1.11 g/t Au/ 19.3m  
1.0 g/t Au/ 44.6m

**Grab Samples:**  
12 g/t Au  
9.7 g/t Au  
32.5 g/t Ag  
44.6m

## 3 TESTARD / BULLSEYE

**Drilling Results:**  
10.14 g/t Au/ 1.8m

**Channel Sample Highlights:**  
203 g/t Au  
2,440 g/t Ag  
1,020 g/t Ag  
6.02% Cu

**Highlights:**  
19.5 g/t Au over 0.5m  
12.2 g/t Au over 1.3m  
5.3 g/t Au over 2.1m

## 4 GOLDFIELD BOULDER ZONE

Grab Samples: 26.2 g/t Au, 27.8 g/t Ag

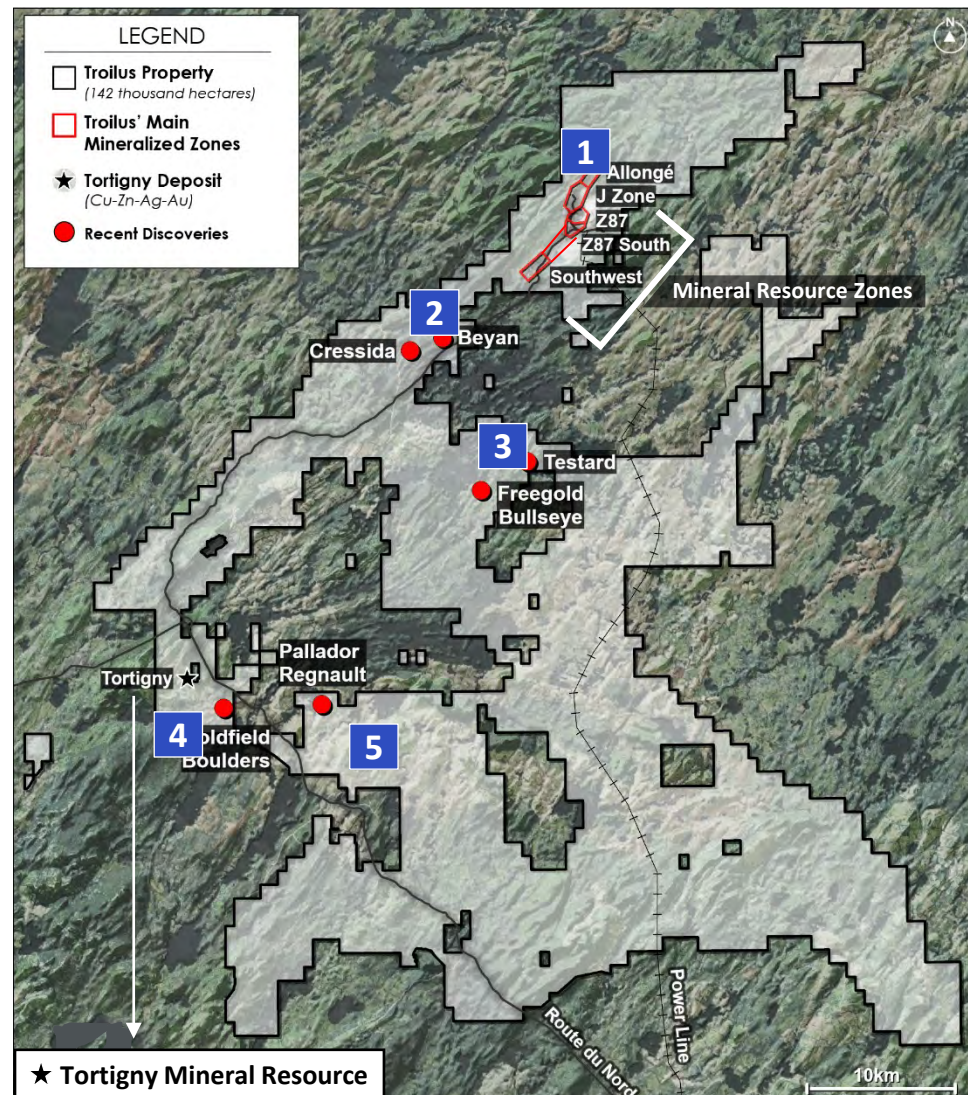
## 5 PALLADOR-REGNAULT

On strike with recent Sumitomo/KLD discovery hole: **8.47 g/t Au over 29m**

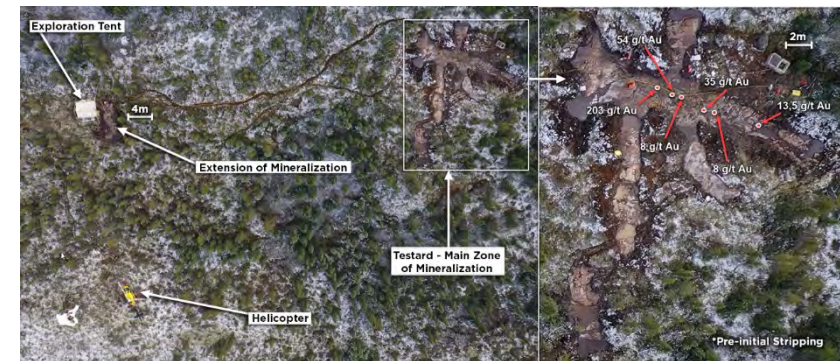
**Drill Highlights:**  
4.74g/t Au/ 2.5m, incl. 19.24 g/t Au/ 0.5m

**Boulder Grab Samples:**  
Up to 102 g/t gold

# MULTIPLE TARGETS TO SUPPORT GROWTH STRATEGY



**Indicated:** 1.1 million tonnes grading 1.8% Cu, 3.65% Zn, 48.51 g/t Ag and 0.35 g/t Au  
**Inferred:** 99,000 tonnes grading 1.19% Cu, 1.23% Zn, 12.45 g/t Ag and <0.1 g/t Au  
 (NI 43-101 compliant mineral resource was completed by Beaufield Resources in 2014)





# PEA SUMMARY & SENSITIVITIES (AUGUST 2020)

**246,000 oz Au**

Avg. Annual Production  
(first 14 years)

**22 years**

Mine Life  
(14 yrs Open Pit)

**\$333M**

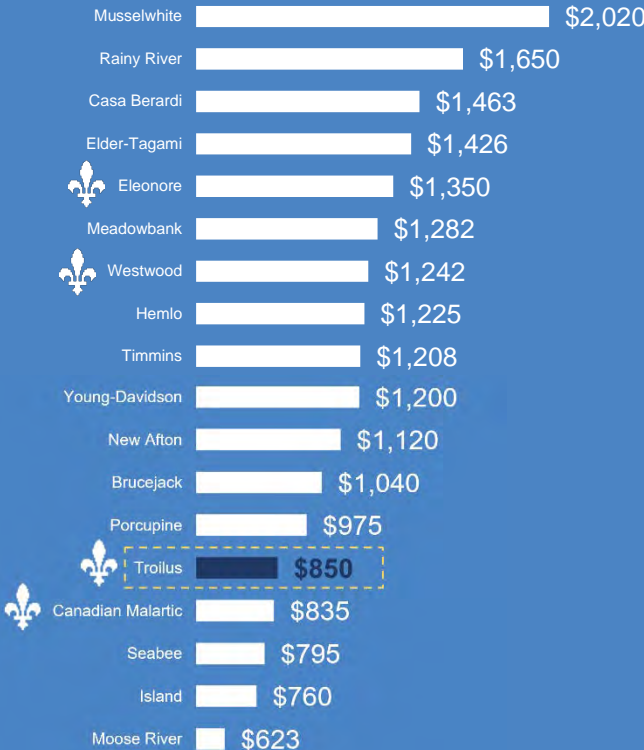
CAPEX

**\$719/oz AuEq**

Cash Operating Costs  
\$850/oz AuEq AISC

AMONG THE TOP CANADIAN  
GOLD MINES, TROILUS' ALL-IN-  
SUSTAINING-COSTS (AISC) WOULD  
BE IN THE LOWER QUARTILE

2020 AISC Guidance (US\$/oz)<sup>(1)</sup>



LOWER CASE  
**\$1,350/oz Au**

**\$713M**

Pre-Tax NPV<sub>5%</sub>

**23.7%**

Pre-Tax IRR

**\$419M**

Post-Tax NPV<sub>5%</sub>

**18.2%**

Post-Tax IRR

**4.4 year**

Payback

BASE CASE  
**\$1,475/oz Au**

**\$971M**

Pre-Tax NPV<sub>5%</sub>

**29.6%**

Pre-Tax IRR

**\$576M**

Post-Tax NPV<sub>5%</sub>

**22.9%**

Post-Tax IRR

**4 year**

Payback

CONSENSUS  
**\$1,750/oz Au**

**\$1,538M**

Pre-Tax NPV<sub>5%</sub>

**41.8%**

Pre-Tax IRR

**\$915M**

Post-Tax NPV<sub>5%</sub>

**32.2%**

Post-Tax IRR

**3 year**

Payback

HIGHER CASE  
**\$1,950/oz Au**

**\$1,951M**

Pre-Tax NPV<sub>5%</sub>

**50.1%**

Pre-Tax IRR

**\$1,156M**

Post-Tax NPV<sub>5%</sub>

**38.3%**

Post-Tax IRR

**2.5 year**

Payback

IMMEDIATE OPTIMIZATION IN UPCOMING PFS:

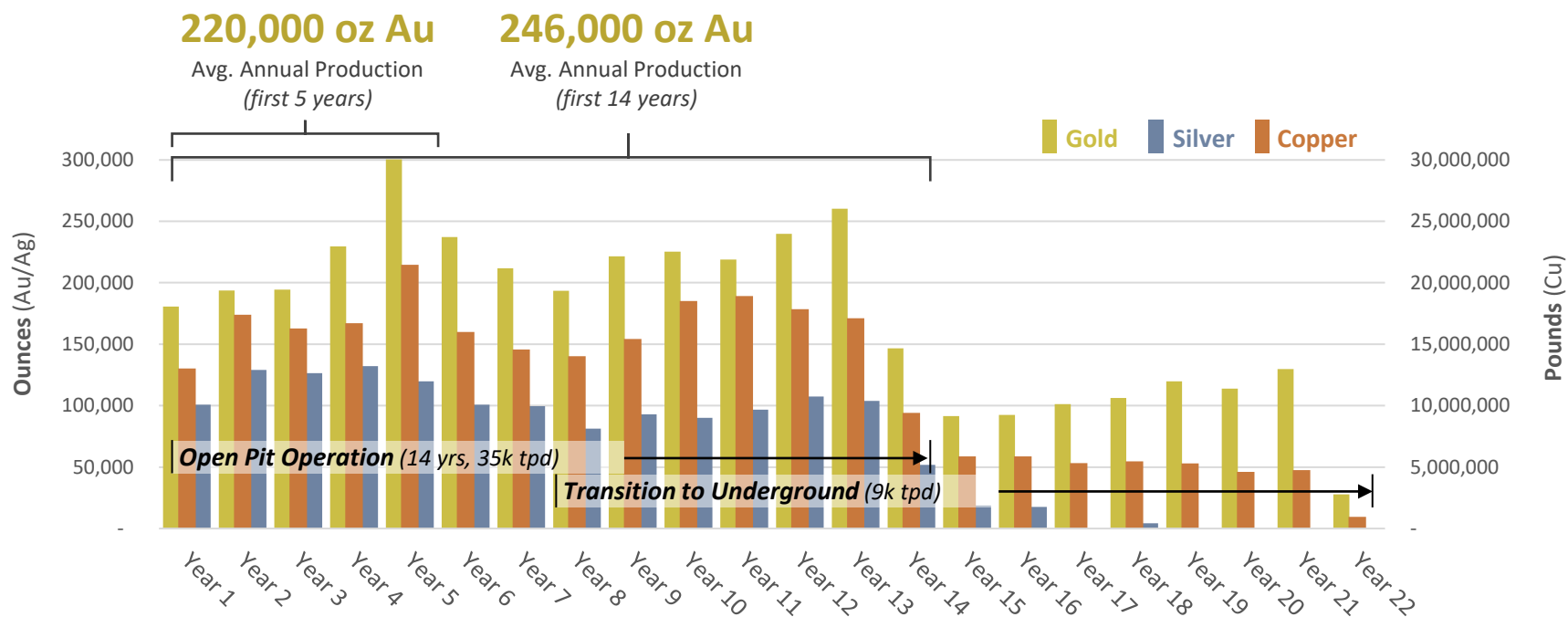
*Not including 2.5% royalty buy-back completed in late 2020. PEA assumed copper price of \$3.00/lb.*

\*All figures reported in US\$ unless stated otherwise. US\$:C\$ exchange of \$0.74. \$719/oz cash costs and \$850/oz AISC are calculated on a pre-tax basis, in line with WGC guidelines, and include copper and silver credits. On a post-tax basis, cash operating costs are \$919 and AISC are \$1,051 per ounce of gold, not including copper and silver credits. Please see cautionary notes related to the PEA on p.2

Source: Company disclosures. Based on 2020 actuals reported, management guidance if actuals not yet reported. Some companies do not provide AISC on an asset level. Troilus metrics based on September 2020 PEA



# PRODUCTION PROFILE – GOLD, COPPER & SILVER

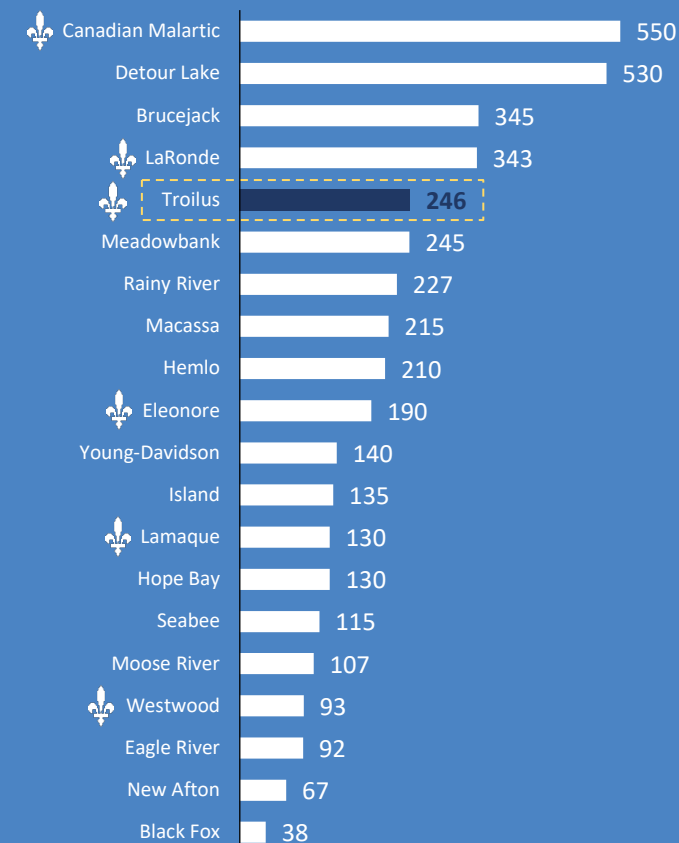


## Near-pits Mineral Growth Opportunities



TROILUS HAS THE POTENTIAL  
TO RANK AMONG THE TOP  
CANADIAN GOLD PRODUCERS

## Annual Production Guidance (2020; Koz Au) <sup>(1)</sup>



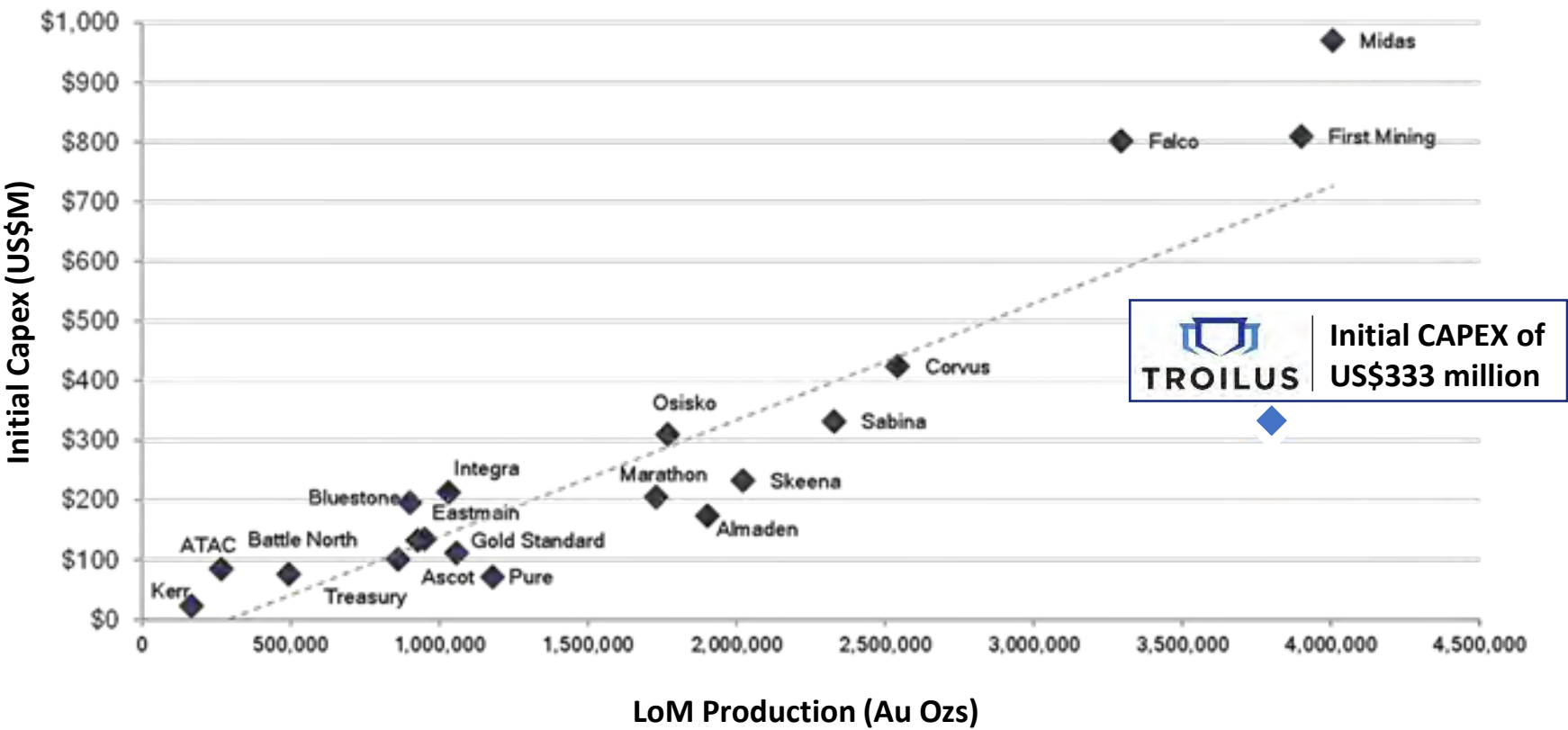
Source: Company disclosures  
(1)Based on 2020 actuals reported, management guidance if actuals not yet reported; Troilus metrics based on September 2020 PEA



BROWNFIELD ADVANTAGE

# TROILUS STANDS OUT AMONG ADVANCED NORTH AMERICAN GOLD DEVELOPERS

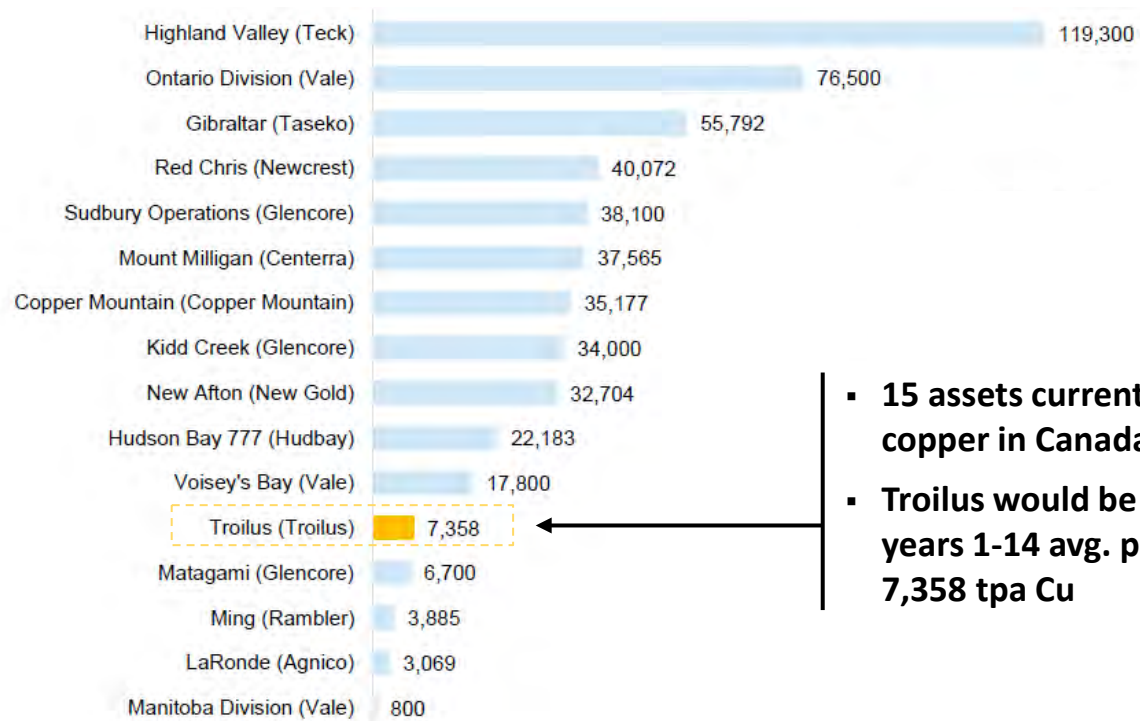
CAPITAL INTENSITY & LOM PRODUCTION OF NORTH AMERICAN GOLD DEVELOPERS



# HIGHLY LEVERAGED TO COPPER

- **Copper production of 7,358 tonne per year (PEA 2020), placing Troilus among the top copper producers in Canada.**
- **Copper is expected to contribute 15.5% to Troilus' total revenue(PEA 2020).**
- **PEA assumed copper price of \$3.00/lb. Significantly positive impact on project economics using current copper prices.**

Canadian Copper Producing Assets – 2020 Cu Production (tonnes)



- **15 assets currently producing copper in Canada**
- **Troilus would be #12 based on years 1-14 avg. production of 7,358 tpa Cu**





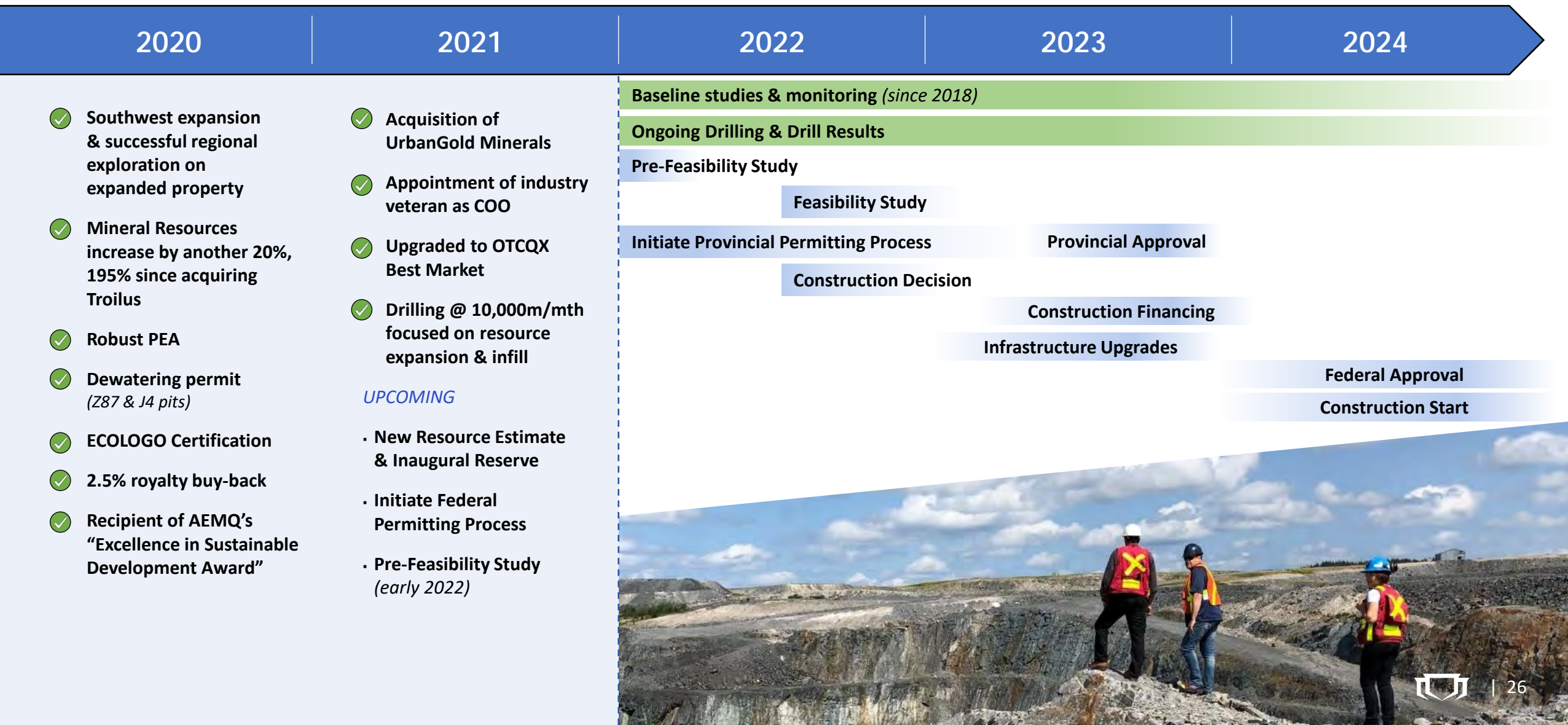
# UPCOMING PRE-FEASIBILITY STUDY: EXPECTATIONS & TARGETS

- Open pit only mining scenario, targeting +220,000 oz annual production
- Inaugural Reserve (Q4 2021) to feed into PFS; Targeting over 90% resource conversion from PEA
- PFS to reflect 2.5% royalty buy-back completed in late 2020
- Base case copper price expected to be higher than PEA assumed price of \$3.00/lb
- Targeting completion in Q1 2022; later than expected due to continued exploration success



# RECENT MILESTONES & PATH FORWARD

Continuing to De-Risk and Unlock Value





# HOW DOES TROILUS STAND OUT AMONG THE +3,500 JUNIOR MINING COMPANIES OUT THERE?



**TROILUS  
GOLD CORP.**

**SABINA GOLD  
& SILVER CORP.**

**ARTEMIS  
GOLD INC.**



TSX: TLG

OTCQX: CHXMF

### Corporate Headquarters

400-36 Lombard Street, Toronto, Ontario M5C 2X3

Follow us:



### Justin Reid

*President, CEO & Director*

(647) 276-0050, x1305

[justin.reid@troilusgold.com](mailto:justin.reid@troilusgold.com)

### Blake Hylands

*VP Exploration*

(905) 599-5499

[blake.hylands@troilusgold.com](mailto:blake.hylands@troilusgold.com)

### Caroline Arsenault

*VP Corporate Communications*

(647) 407-7123

[caroline.arsenault@troilusgold.com](mailto:caroline.arsenault@troilusgold.com)







# APPENDIX

Project History

Stakeholder Engagement

Regional Geology

Mineral Resource Summary



# TROILUS' HISTORY AS A PAST-PRODUCER

1950's

Initial exploration



1986

Initial drilling

1993

Positive  
Feasibility Study

1996-2010

Inmet Mining Corp. operated the Troilus mine;  
+2Moz of gold and ~70,000t of copper produced



The Troilus Mine operated during a weak gold environment, which among other factors, resulted in minimal expansion drilling outside of the main mineralized zones to replace the mine's reserves.

2011

Failed merger with Lundin Mining

2012

Hostile takeover of Inmet  
by First Quantum Minerals

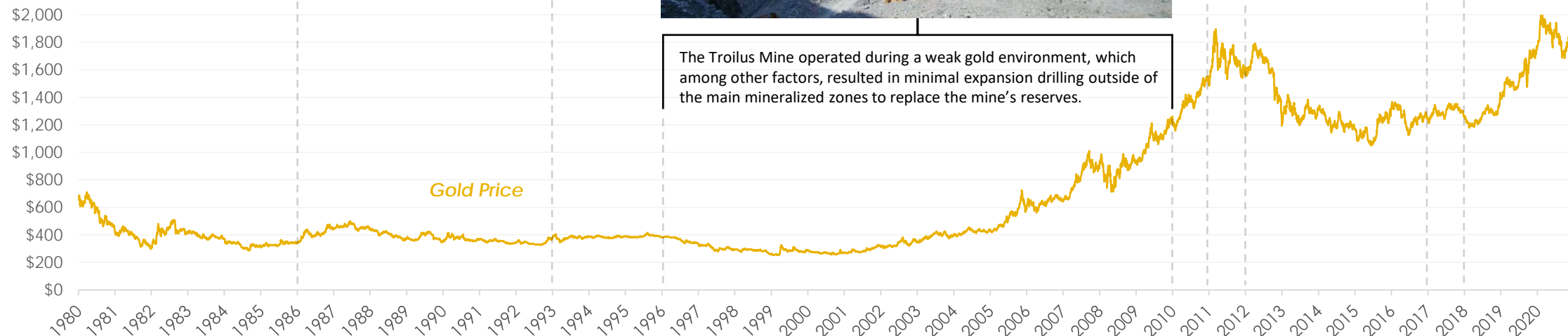
2017

Troilus is acquired in Dec. 2017  
- \$300,000 cash  
- 2.5% NSR (bought back in Nov. 2020)



2018

Troilus Gold Corp. begins  
trading on the TSX





# STAKEHOLDER ENGAGEMENT

## Signed Pre-Development Agreement (PDA) with the Cree Nation of Mistissini, the Grand Council of the Crees (Eeyou Istche) and the Cree Nation in July 2018<sup>1</sup>

- Establishes the framework for the on-going and mutually beneficial relationship regarding business and employment opportunities for the Cree
- Facilitates continued support for exploration activities and preparation of the ESIA studies
- Illustrates the completion of the Impacts and Benefits Agreement (IBA) to show the economic viability of the Troilus Project



Justin Reid, CEO and John Matoush,  
Mistissini Community Liaison



At Z87 during the Cree Mineral  
Exploration Board's student site tour

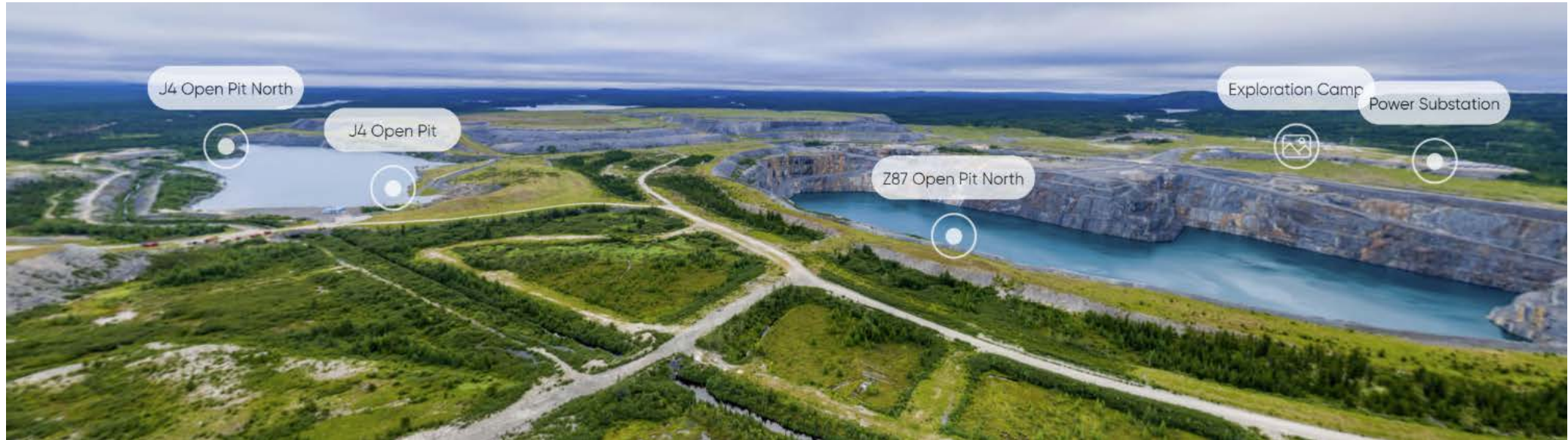


At Z87 during the Cree Site tour with  
council and Chief Thomas Neeposh

(1) See news dated July 17, 2018

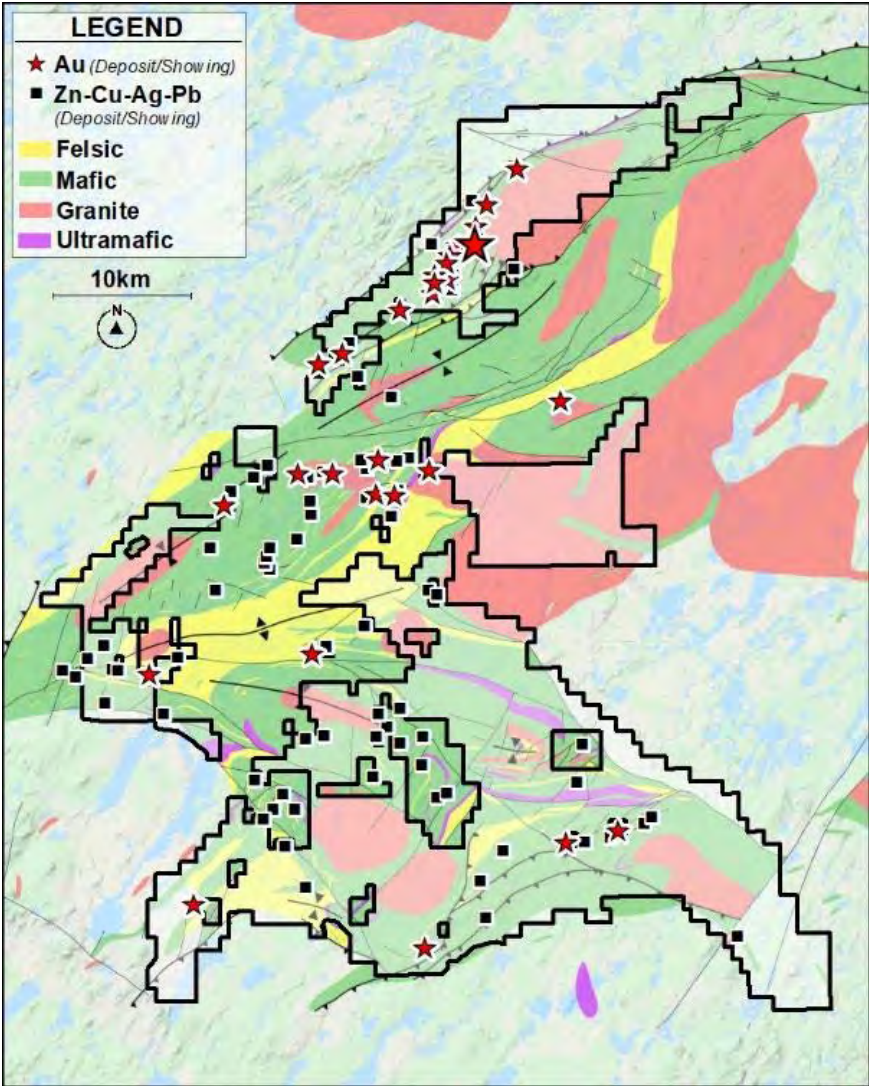
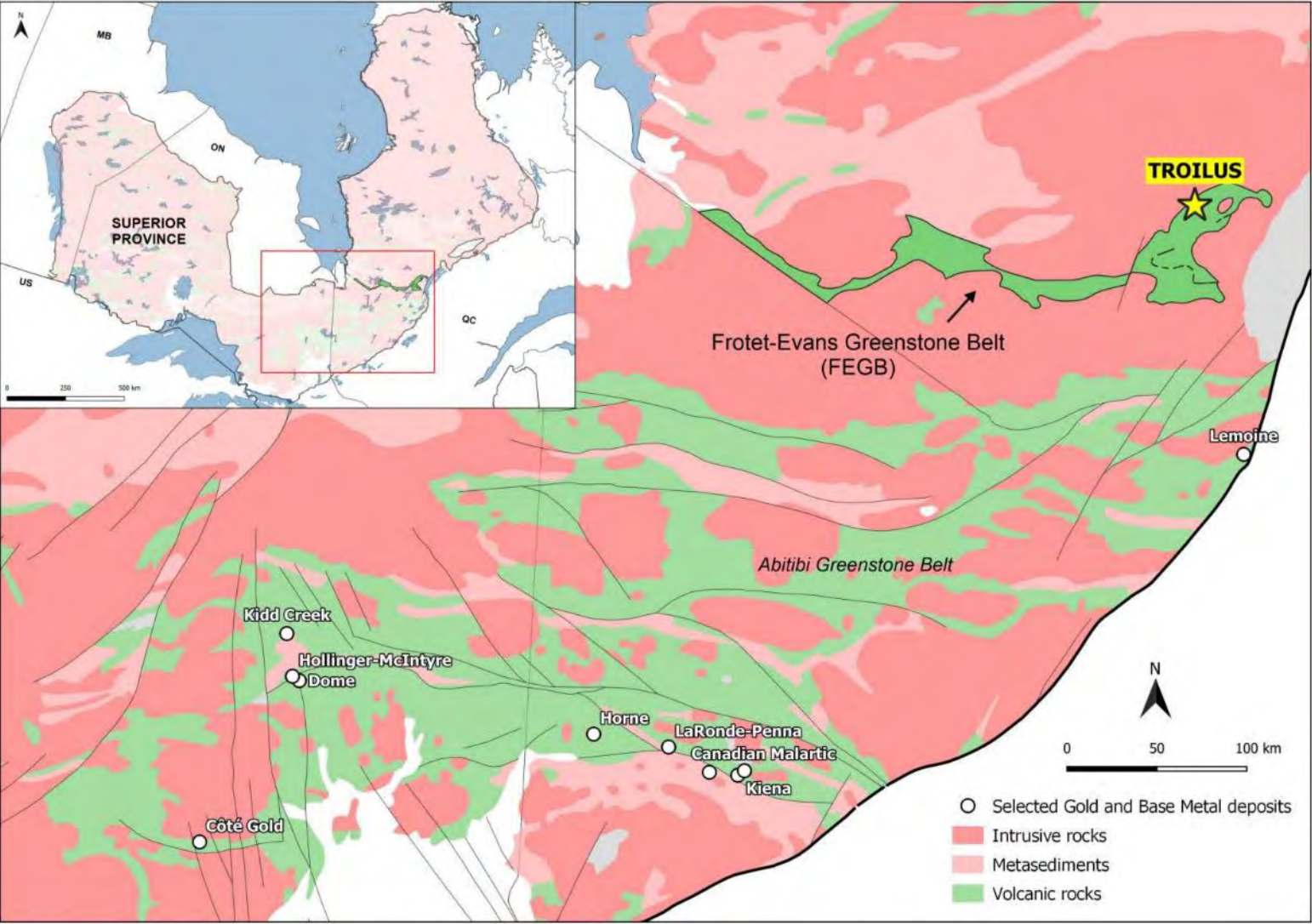


# PROJECT SITE PHOTOS





# REGIONAL GEOLOGY



# MINERAL RESOURCE SUMMARY – ALL ZONES

Effective date of mineral resource: July 20, 2020

<b>Total Open Pit &amp; Underground</b>	<b>Tonnes (Mt)</b>	<b>Gold Equiv. (g/t)</b>	<b>Gold (g/t)</b>	<b>Copper (%)</b>	<b>Silver (g/t)</b>	<b>Contained Gold (Moz)</b>	<b>Contained Copper (Mlb)</b>	<b>Contained Silver (Moz)</b>	<b>Contained AuEq (Moz)</b>
<b>Indicated</b>	177.30	0.87	0.75	0.08	1.17	4.30	322.60	6.66	4.96
<b>Inferred</b>	116.70	0.84	0.73	0.07	1.04	2.76	189.73	3.91	3.15

## Total Open Pit

<b>Indicated</b>	164.20	0.80	0.68	0.08	1.20	3.62	284.69	6.32	4.21
<b>Inferred</b>	101.20	0.70	0.60	0.07	1.12	1.95	151.01	3.65	2.27

## Total Underground

<b>Indicated</b>	13.10	1.79	1.61	0.13	0.81	0.68	37.91	0.34	0.75
<b>Inferred</b>	15.50	1.77	1.62	0.11	0.52	0.81	38.72	0.26	0.88

Mineral Resources that are not Mineral Reserves do not have demonstrated economic viability;

Summation errors may occur due to rounding;

Open pit mineral resources are reported within an optimized constraining shells.

Open pit cut-off grade is 0.3 gpt AuEq where the metal equivalents were calculated as follows:

Z87 Zone:  $AuEq = Au \text{ grade} + 1.2566 * Cu \text{ grade} + 0.0103 * Ag \text{ grade}$

J4/J5 Zone:  $AuEq = Au \text{ grade} + 1.2979 * Cu \text{ grade} + 0.0108 * Ag \text{ grade}$

SW Zone:  $AuEq = Au \text{ grade} + 1.2768 * Cu \text{ grade} + 0.0106 * Ag \text{ grade}$

Metal prices for the AuEq formulas are: \$US 1,600/ oz Au; \$3.25/lb Cu, and \$20.00/ oz Ag; with an exchange rate of US\$1.00:CAD\$1.30;

Metal recoveries for the AuEq formulas are:

Z87 Zone: 83% for Au recovery, 92% for Cu recovery and 76% for Ag recovery

J4/J5 Zone: 82% for Au recovery, 88% for Cu recovery and 76% for Ag recovery

SW Zone: 82.5% for Au recovery, 90% for Cu recovery and 76% for Ag recovery

Underground cut-off grade is 0.9 AuEq at Z87 Zone and J4/J5 Zone

\*See additional disclosures related to the mineral resource calculation in Appendix



# OPEN PIT MINERAL RESOURCES – BY ZONE

Effective date of mineral resource: July 20, 2020

	Tonnes (Mt)	Gold Equiv. (g/t)	Gold (g/t)	Copper (%)	Silver (g/t)	Contained Gold (Moz)	Contained Copper (Mlb)	Contained Silver (Moz)	Contained AuEq (Moz)
<b>Z87 &amp; Z87 South</b>									
Indicated	84.60	0.92	0.79	0.09	1.39	2.15	169.54	3.77	2.50
Inferred	32.70	0.70	0.60	0.07	1.50	0.63	49.34	1.57	0.73
<b>J Zone (J4 &amp; J5)</b>									
Indicated	79.60	0.67	0.57	0.07	1.00	1.47	115.16	2.55	1.71
Inferred	45.90	0.65	0.55	0.07	0.96	0.82	65.94	1.42	0.96
<b>Southwest Zone</b>									
Inferred	22.60	0.80	0.70	0.07	0.89	0.51	35.73	0.65	0.58
<b>Total Open Pit – All Zones</b>									
Indicated	<b>164.20</b>	<b>0.80</b>	<b>0.68</b>	<b>0.08</b>	<b>1.20</b>	<b>3.62</b>	<b>284.69</b>	<b>6.32</b>	<b>4.21</b>
Inferred	<b>101.20</b>	<b>0.70</b>	<b>0.60</b>	<b>0.07</b>	<b>1.12</b>	<b>1.95</b>	<b>151.01</b>	<b>3.65</b>	<b>2.27</b>

Mineral Resources that are not Mineral Reserves do not have demonstrated economic viability;

Summation errors may occur due to rounding;

Open pit mineral resources are reported within an optimized constraining shells.

Open pit cut-off grade is 0.3 gpt AuEQ where the metal equivalents were calculated as follows:

Z87 Zone:  $\text{AuEq} = \text{Au grade} + 1.2566 * \text{Cu grade} + 0.0103 * \text{Ag grade}$

J4/J5 Zone:  $\text{AuEq} = \text{Au grade} + 1.2979 * \text{Cu grade} + 0.0108 * \text{Ag grade}$

SW Zone:  $\text{AuEq} = \text{Au grade} + 1.2768 * \text{Cu grade} + 0.0106 * \text{Ag grade}$

Metal prices for the AuEQ formulas are: \$US 1,600/ oz Au; \$3.25/lb Cu, and \$20.00/ oz Ag; with an exchange rate of US\$1.00:CAD\$1.30;

Metal recoveries for the AuEQ formulas are:

Z87 Zone: 83% for Au recovery, 92% for Cu recovery and 76% for Ag recovery

J4/J5 Zone: 82% for Au recovery, 88% for Cu recovery and 76% for Ag recovery

SW Zone: 82.5% for Au recovery, 90% for Cu recovery and 76% for Ag recovery

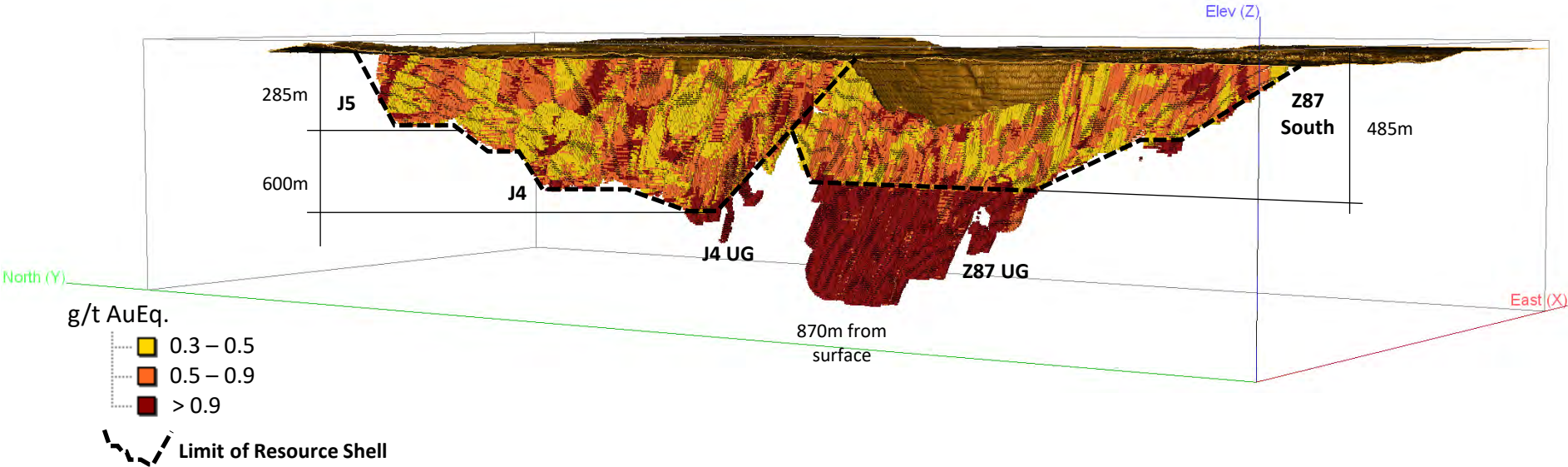
Underground cut-off grade is 0.9 AuEQ at Z87 Zone and J4/J5 Zone

\*See additional disclosures related to the mineral resource calculation in Appendix

# 2020 MINERAL RESOURCE – GRADE DISTRIBUTION

Z87, Z87 South and J Zone

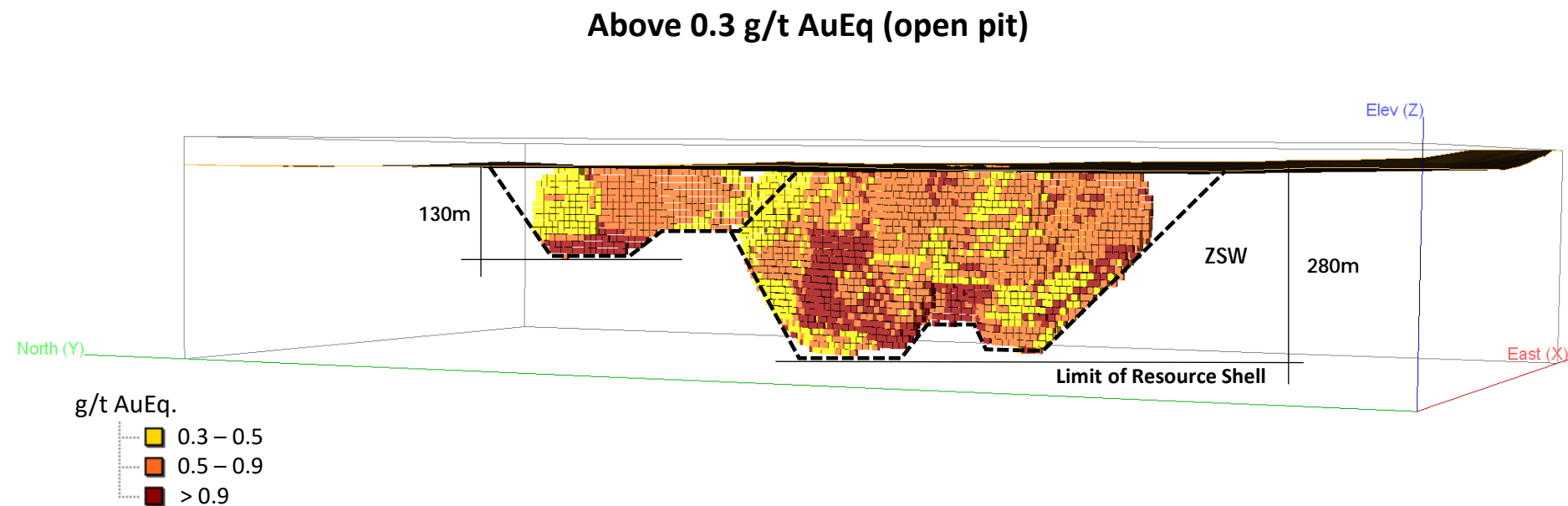
Above 0.3 g/t AuEq (open pit) & above 0.9 g/t AuEq (underground)



Classification 0.30 g/t OP and 0.90 g/t UG	Tonnes (Mt)	Gold (g/t)	Copper (%)	Silver (g/t)	Gold Equiv. (g/t)	Contained Gold (Moz)	Contained Copper (Mlb)	Contained Silver (Moz)	Contained AuEq (Moz)
Total Open Pit and Underground									
Indicated	177.3	0.75	0.08	1.17	0.87	4.30	322.60	6.66	4.96
Inferred	94.1	0.74	0.07	1.08	0.85	2.25	154.00	3.26	2.57



# MINERAL RESOURCE GRADE DISTRIBUTION, SOUTHWEST ZONE



	Tonnes (Mt)	Gold (g/t)	Copper (%)	Silver (g/t)	Gold Equiv. (g/t)	Contained Gold (Moz)	Contained Copper (Mlb)	Contained Silver (Moz)	Contained AuEq (Moz)
Inferred	22.6	0.70	0.07	0.89	0.80	0.51	35.73	0.65	0.58

# 2020 MINERAL RESOURCE - ADDITIONAL DISCLOSURES

*Effective date of mineral resource: July 20, 2020*

## **The resource constraining shells were generated with:**

Metal Prices of Gold \$US 1600/oz, Copper \$US 3.25/lb, Silver \$US 20/oz

## **Mining Costs:**

- J Zone and 87 Zone base cost \$Cdn 1.71/t moved,
- SW Zone base cost \$Cdn 1.66/t moved
- Incremental cost \$Cdn 0.03/t waste moved, \$Cdn 0.02/t feed moved

## **Process and G&A Costs:**

\$Cdn 8.44/t processed

## **Wall slopes:**

Varied between 49.5 to 60 degrees depending on pit area and slope sector

## **Metal Recoveries:**

Gold: 90% all zones except in lower grade ( $\text{Au} < 1/2 \text{ g/t}$ ) portions of SW zone = 88%

Copper: 90% all zones except in higher grade ( $\text{Cu}\% > 0.13\%$ ) portions of SW zone = 92%

Silver: all zones 40%