

HUB of Biotherapeutic Intelligence™



Winning the RACE

For precision medicine.

June 2022 NASDAQ:IPA

ENGINEERED for the biotherapeutic RACE

Disclosures



Disclaimer

This presentation is not, & nothing in it should be construed as, an offer, invitation or recommendation in respect of ImmunoPrecise Antibodies Ltd. (the “Company”) securities, or an offer, invitation or recommendation to sell, or solicitation of an offer to buy, the facilities or of the Company’s securities in any jurisdiction. Neither this presentation nor anything in it shall form the basis of any contract or commitment. This presentation is not intended to be relied upon as advice to investors or potential investors & does not take into account the investment objectives, financial situation or needs of any investor. All investors should consider such factors in consultation with a professional advisor of their choosing when deciding if an investment is appropriate. The Company has prepared this presentation based on information available to it, including information derived from public sources that have not been independently verified. No representation or warranty, express or implied, is provided in relation to the fairness, accuracy, correctness, completeness or reliability of the information, opinions or conclusions expressed herein. These projections should not be considered a representation of the Company’s potential cash generation performance in any way.

Forward Looking Statements

This presentation includes forward-looking statements, including future-oriented financial information (“FOFI”). Forward-looking statements can generally be identified by the use of language such as “may”, “expect”, “estimate”, “anticipate”, “intend”, “believe”, “potential” & “continue” or the negative thereof or similar variations. Forward-looking statements are not statements of historical fact or assurances of future performance. They are based on the current beliefs, expectations & assumptions of the Company’s management about the Company’s business, planned acquisitions, future plans, anticipated events & other future conditions. All forward-looking statements attributable to the Company or persons acting on its behalf apply only as of the date of this document & are expressly qualified in their entirety by the cautionary statements included in this presentation. The Company undertakes no obligation to update or revise these forward-looking statements to reflect events or circumstances that arise after the date made or to reflect the occurrence of unanticipated events. Inevitably, some assumptions will not materialize, & anticipated events & circumstances may affect the ultimate financial results. Projections are inherently subject to substantial & numerous uncertainties & to a wide variety of significant business, economic & competitive risks, & the assumptions underlying the projections may be inaccurate in any material respect, including, but not limited to, those risks set forth in the Company’s Management Discussion & Analysis for the year ended April 30, 2021, a copy of which may be obtained from SEDAR.com. The purpose of FOFI provided in this presentation is to provide prospective investors with information pertaining to the Company’s long-term business objectives. Readers are cautioned that this information may not be appropriate for other purposes.

The HUB of Biotherapeutic Intelligence

A hybrid of platforms **and** technologies in the SCIENCE and BUSINESS of therapeutic discovery.



Engineered for the scientific race

- Antibody research & development
- Protein manufacturing

LENS^{ai}

A new lens on
biotherapeutic
intelligence:

➤ Natural
➤ Artificial
➤ Complex

BioStrand



Engineered for the clinical race

- Licensing
- Partnership



The Problem

Matching the mutation to
the therapy



The Problem

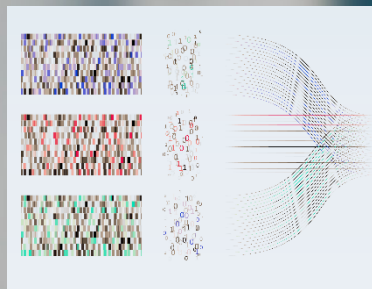
Matching the mutation to the therapy – need for rapid and accurate solutions for personalized medicine



The central challenges of computational biology are to:

- Analyze massive multi-omic datasets to determine sequence and structural basis of disease, identify targets
- Rapidly analyze structural target data to inform the design of safe and efficacious therapies
- Accurately match individualized therapies to patients based on structural and functional characteristics of target

From sequence ... to therapy.

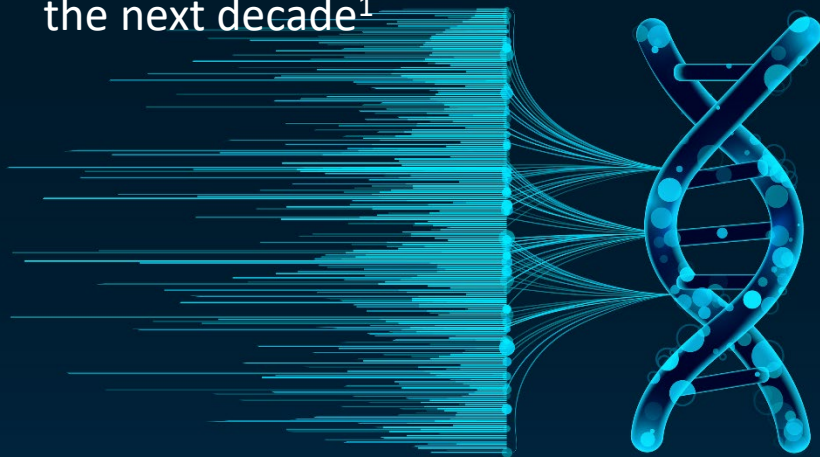


Too Much Data

Sequencing capabilities faster than decoding

Genomics research is predicted to generate:

40 exabytes of data in
the next decade¹



1. <https://www.genome.gov/about-genomics/fact-sheets/Genomic-Data-Science>

Genomic Data Science (GDS) enables powerful computational methods to decode functional information hidden in DNA sequences.

- Existing sequencing capabilities far outpace the ability to decipher encoded genes.
- As genomic research grows, so does the gap for processing at the pace of the burgeoning pool of RICH and VALUABLE data.

Data Harmonization Challenges

Complex layers

GDS is limited by:

- The integration of large, multiple omics data sets from multiple sources and multidimensions
- Computational burdens
- Storage space requirements

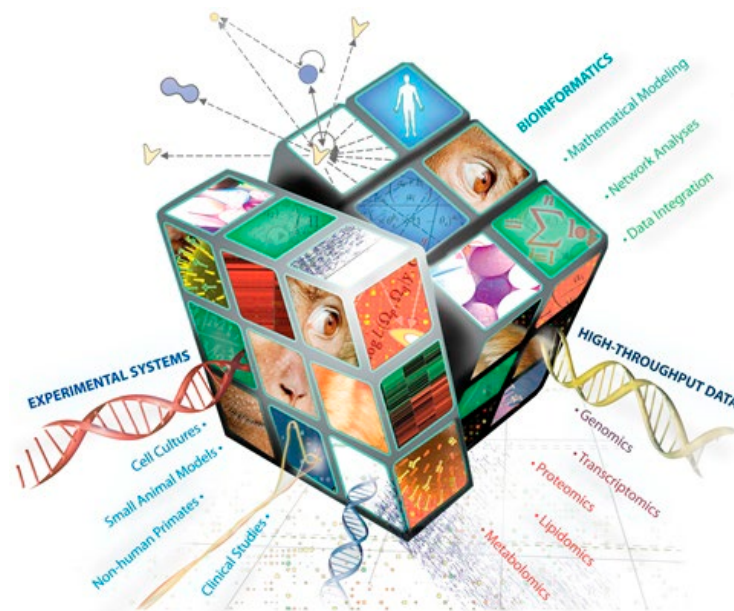


Image copyright : laboratoire-prism.fr/index.php/education/formations



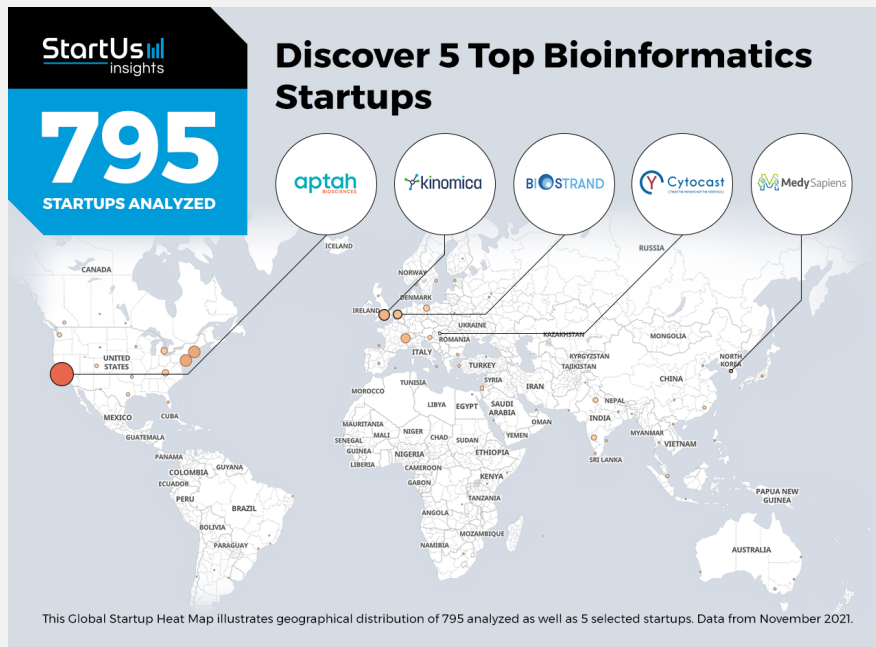
The Solution

LENS^{ai} Complex Intelligence
Platform

ENGINEERED for the human RACE

Top 5 Bioinformatics Start-Ups

Biostrand chosen one of top 5 of 795



<https://www.startus-insights.com/innovators-guide/bioinformatics-startups/>; 5.2022

- Data-driven innovation insights into the biotech sector
- Distribution of the 795 exemplary start-ups & scale-ups analyzed
- Insights of this data-driven analysis derived from Start-Ups Insights Discovery Platform, covering 2,093,000 + startups & scaleups globally

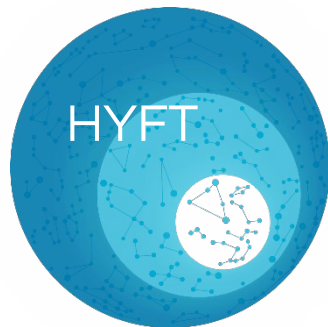
HYFT™

The technology that enables the LENS^{ai} Platform



HYFTs are **"data objects"**. We have isolated 660 million data objects that effectively organize the biosphere

Each HYFT carries multiple layers of information (there is a set of 'default' information, metadata can be continuously added)



- DNA representation
- RNA representation
- AA representation
- strictness 'the combinatorial possibilities' before and after the HYFT
- position
- function
- structure
- cell type
- species
- pathogenicity
- pathway – MoA role
- ... and more



LENS^{ai}™ Complex Intelligence Platform

Software that makes complex data specific, meaningful and applicable

What Google was to the internet,
LENS^{ai} is to the biosphere.

- Indexes data based on HYFT™ fingerprints
- Enables access to vast pools of heterogeneous data
- Structures data into meaningful knowledge

structured
data

sequence
data

unstructured
data

protein
structure





HUB of Biotherapeutic Intelligence™

The IPA Opportunity

The HUB at IPA

Ranked the Highest Rated CRO¹

Antibody Discovery Services and Platforms Market (4th Edition), 2021-2035



*According to our proprietary scoring criteria,
ImmunoPrecise Antibodies has been assigned the
highest competitiveness score for its antibody
discovery service portfolio.¹*



1. Roots, Antibody Discovery Services and Platforms Market (4th Edition), 2021-2035; pp.118; <https://www.rootsanalysis.com/about-us.html>



CRO

Antibody Discovery

The scientific intelligence arm



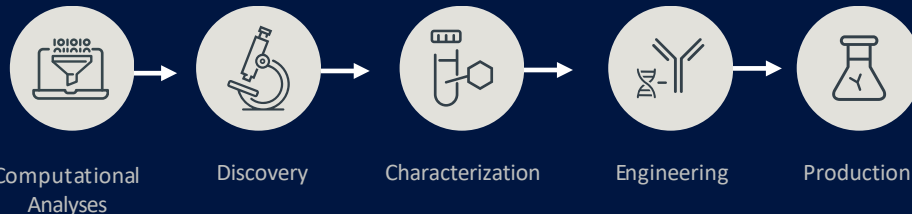
Customized to optimize antibody diversity and clinical success

- [Highest ranking CRO in industry market analysis report¹](#)
- Unparalleled, integrated capabilities, expertise, technologies and platforms
- Extensive options for customizable deliverables
- Eliminates the need for additional vendors

1. Roots, Antibody Discovery Services and Platforms Market (4th Edition), 2021-2035; pp.118 ; <https://www.rootsanalysis.com/about-us.html>

Function-first discovery platforms

Single source, open access biologics technology platform offers end-to-end solutions, empowering partners to discover and develop biologics from concept to clinical lead.



Over 500 Clients Worldwide: 80% top pharma



Talem

Licensing and Partnership

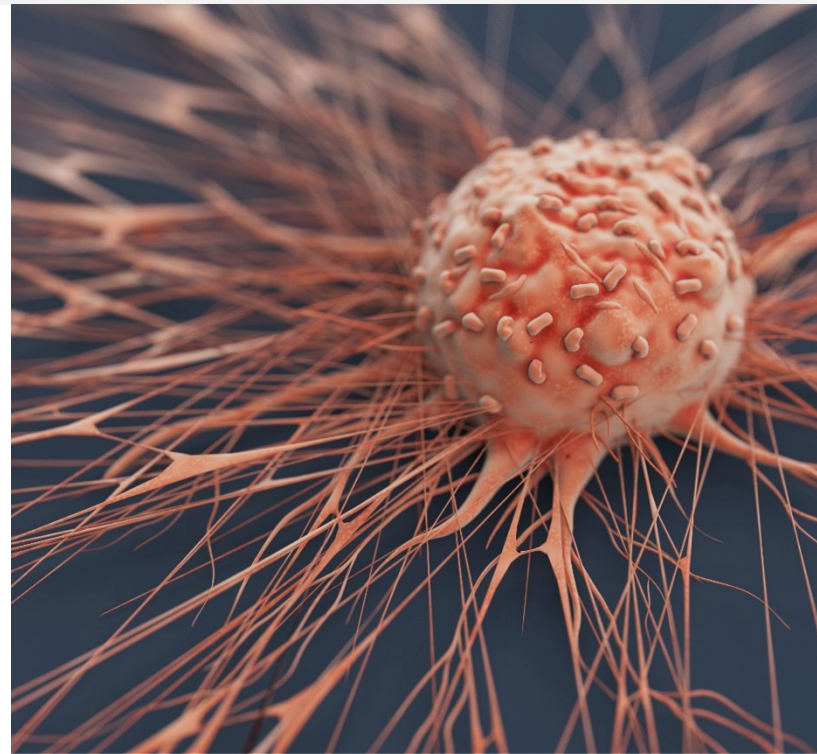
The business intelligence arm



Talem is an extension of the CRO - capitalizing on IPA's robust technologies and success

Talem's preclinical experts focus on next-generation, fully human antibody therapeutics using IPA's rich library of innovative antibody programs.

This drives great time and resource efficiencies—targeting multiple disease indications for licensing or co-development.



Global Players

Key partners



Chosen and respected by
industry leaders and titans





Market Comparables



IpA



BioStrand AI Company Comps



At-A-Glance

Corporate profile



IPA is a progressive, scientific Contract Research Organization (CRO) recently ranked by one of the pharmaceutical industry's most trusted, independent market research sources with the highest competitive score for its antibody service portfolio.¹

The company is comprised of a HUB of biotherapeutic intelligence with a hybrid of experts and technologies, in the science and business of bioplatfrom-based discovery.

IPA provides highly specialized full-continuum therapeutic antibody discovery, development, and out-licensing services (Talem) —with advanced omics and complex intelligence technology that provide unparalleled accuracy for personalized medicine.

Capital Structure (all values in CAD unless otherwise noted)

SHARES DATA, 2021 (as of April 30 th , 2022)	
Shares Outstanding	24,476,846
Share Price (CAD)	\$7.30
Market Cap	\$178,680,976

WARRANTS (as of January 31 st , 2022)			
Balance	Weighted Average Exercise Price	Weighted Average Life Remaining (Years)	Future Cash Opportunity
907,883 ⁽¹⁾	\$3.50	0.15	\$3,177,591
130,111 ⁽²⁾	\$16.81	4.01	\$2,187,166

(1) Expiring March 26th, 2022

(2) Price and cash value stated in USD

(NASDAQ: IPA); (TSXV: IPA)

BALANCES (as of January 31 st , 2022)	
Cash on Hand	\$33,088,032

OPTIONS (as of January 31 st , 2022)			
	Balance	Weighted Average Exercise Price	Weighted Average Life Remaining (Years)
Exercisable	1,017,233	\$7.59	2.25
Unvested	621,917	\$9.54	4.54
Total	1,639,150	\$8.33	3.12

1. ROOTS 2022: Antibody Discovery Services and Platforms Market (Industry Trends and Global Forecast 4th Edition), 2021-2035; p.118

The Goal

A new standard for personalized medicine

We can unequivocally improve the specificity of biotherapeutics by unlocking the language of the genome, to conquer
PERSONALIZED MEDICINE.





IpA

Thank you!

And welcome — to the new world of
personalized medicine.

ENGINEERED for the biotherapeutic RACE