



## ISSUING OF MOTOR VEHICLE LICENSES: APRIL 2024

The Hellenic Statistical Authority announces that in April 2024, 23,711 road motor cars (both new and used from abroad) were put into circulation for the first time, recording an increase 29.3% compared with the corresponding month of 2023 when the number of road motor cars was 18,343. In April 2023, an 1.9% increase had been observed in comparison with the corresponding month of 2022 (Table 1, Graphs 1,2,3,5). A total number of 14,343 new cars were put into circulation in April 2024 compared with 10,995 in April 2023, recording an increase 30.5%.

The new motorcycles over 50cc (both new and used from abroad) that were put into circulation for the first time in April 2024 amounted to 8,748, against 5,468 in April 2023, thus recording a 60.0% increase. In April 2023, an 1.7% decrease had been observed in comparison with the corresponding month of 2022 (Table 1, Graph 4). Out of the above motorcycles 8,342 were new, while the corresponding figure in April 2023 was 5,186, recording a 60.9% increase.

During the period January - April 2024, 87,203 road motor cars (both new and used from abroad) were put into circulation for the first time, representing an increase of 9.8% compared to the corresponding period of 2023 when the number of road motor cars was 79,387. During the period January - April 2023 an increase of 16.4% had been observed in comparison with the corresponding period of 2022 (Table 3, Graphs 6,7). Out of the above number of road motor cars that were put into circulation from January to April 2024 53,714 were new, while the corresponding number during the respective period of 2023 was 47,865, recording an increase of 12.2%.

During the period January - April 2024 the circulation of new motorcycles over 50cc (both new and used from abroad) amounted to 23,235 against 18,539 in the respective period of 2023, thus representing a 25.3% increase. An increase of 19.4% had been observed during the period January - April 2023 in comparison with the corresponding period of 2022 (Table 3, Graphs 6,7). A total number of 21,917 new motorcycles were put into circulation, from January to April 2024, compared with 17,436 during the corresponding period of 2023, recording a 25.7% increase.

*Information on methodological issues:*

*Sectoral Statistics Division*

*Transport Statistics Section*

Elpida Kleftogianni, Konstantinos Menexes

Tel: +30 213 135 3087, +30 213 135 3055

e-mail: e.kleftogianni@statistics.gr, k.menexes@statistics.gr

Information for data provision:

Tel: +30 213 135 2022

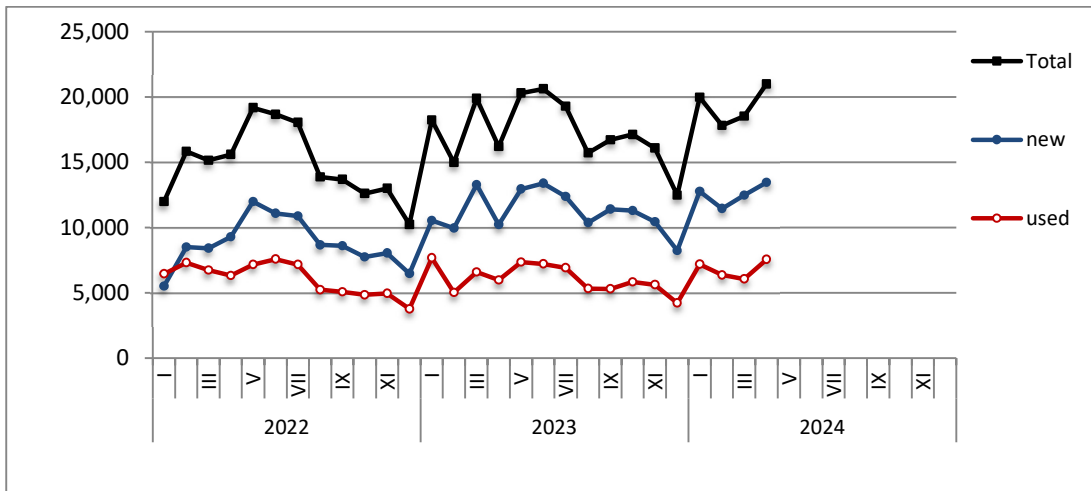
e-mail: data.dissem@statistics.gr

Table 1. Road motor vehicles, both new and used, put into circulation for the first time in Greece: April 2022 - 2024															
Category of Road Motor Vehicles	April									Change (%)					
	2022			2023			2024			2023/2022			2024/2023		
	Total	New	Used	Total	New	Used	Total	New	Used	Total	New	Used	Total	New	Used
<b>Greece, total</b>															
Road Motor Vehicles,total	23,559	15,342	8,217	23,811	16,181	7,630	32,459	22,685	9,774	1.1%	5.5%	-7.1%	36.3%	40.2%	28.1%
1. Road motor cars	17,994	10,184	7,810	18,343	10,995	7,348	23,711	14,343	9,368	1.9%	8.0%	-5.9%	29.3%	30.5%	27.5%
Passenger Cars	15,611	9,294	6,317	16,207	10,228	5,979	21,000	13,448	7,552	3.8%	10.0%	-5.4%	29.6%	31.5%	26.3%
Buses	115	23	92	65	14	51	186	81	105	-43.5%	-39.1%	-44.6%	186.2%	478.6%	105.9%
Lorries	2,268	867	1,401	2,071	753	1,318	2,525	814	1,711	-8.7%	-13.1%	-5.9%	21.9%	8.1%	29.8%
2. Motorcycles > 50 cc	5,565	5,158	407	5,468	5,186	282	8,748	8,342	406	-1.7%	0.5%	-30.7%	60.0%	60.9%	44.0%
<b>Prefecture of Attica</b>															
Road Motor Vehicles,total	12,376	9,193	3,183	13,171	10,005	3,166	17,163	13,464	3,699	6.4%	8.8%	-0.5%	30.3%	34.6%	16.8%
1. Road motor cars	9,913	6,815	3,098	10,755	7,665	3,090	13,266	9,642	3,624	8.5%	12.5%	-0.3%	23.3%	25.8%	17.3%
Passenger Cars	8,864	6,200	2,664	9,870	7,186	2,684	12,262	9,137	3,125	11.3%	15.9%	0.8%	24.2%	27.2%	16.4%
Buses	46	13	33	29	7	22	122	65	57	-37.0%	-46.2%	-33.3%	320.7%	828.6%	159.1%
Lorries	1,003	602	401	856	472	384	882	440	442	-14.7%	-21.6%	-4.2%	3.0%	-6.8%	15.1%
2. Motorcycles > 50 cc	2,463	2,378	85	2,416	2,340	76	3,897	3,822	75	-1.9%	-1.6%	-10.6%	61.3%	63.3%	-1.3%

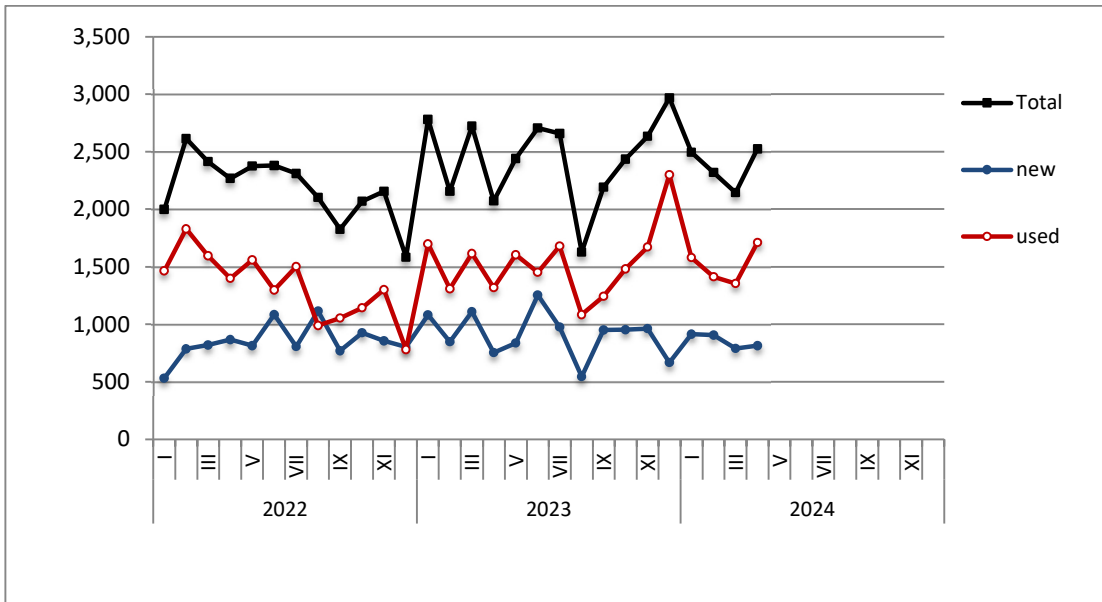
Table 2. Road motor vehicles, both new and used, put into circulation for the first time in Greece: May 2022 – April 2024

Category of Road Motor Vehicles	Average May 2022 - Apr. 2023			Average May 2023 - Apr. 2024			Change (%)		
	Average May 2023 - Apr. 2024 / Average May 2022 - Apr. 2023								
	Total	New	Used	Total	New	Used	Total	New	Used
<b>Greece, total</b>									
Road Motor Vehicles,total	23,268	15,640	7,628	26,672	18,485	8,187	14.6%	18.2%	7.3%
1. Road motor cars	18,025	10,728	7,297	20,495	12,627	7,868	13.7%	17.7%	7.8%
Passenger Cars	15,716	9,791	5,925	17,967	11,717	6,250	14.3%	19.7%	5.5%
Buses	98	23	75	99	29	70	1.0%	26.1%	-6.7%
Lorries	2,211	914	1,297	2,429	881	1,548	9.9%	-3.6%	19.4%
2. Motorcycles > 50 cc	5,243	4,912	331	6,177	5,858	319	17.8%	19.3%	-3.6%

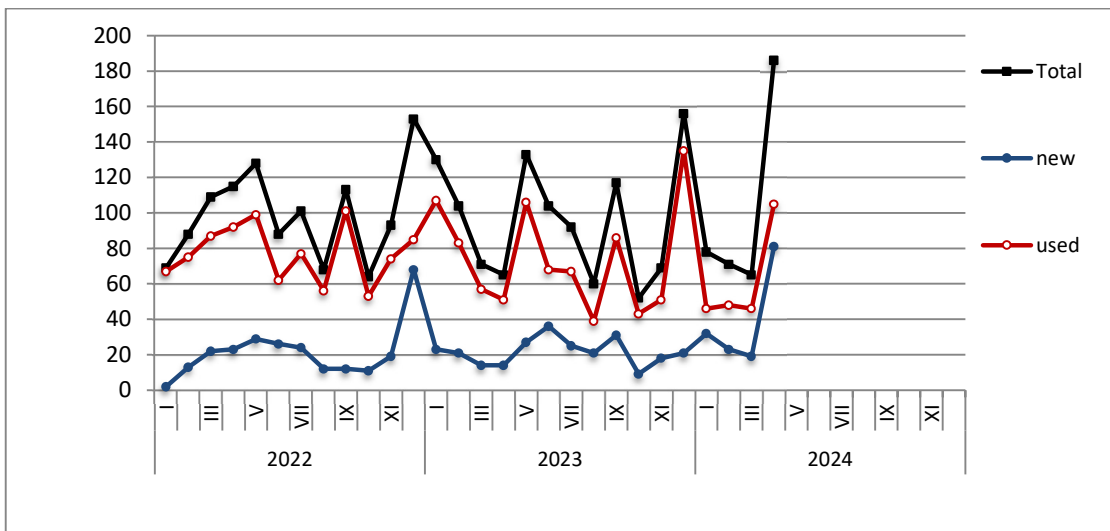
**Graph 1: Passenger Cars (January 2022 – April 2024)**



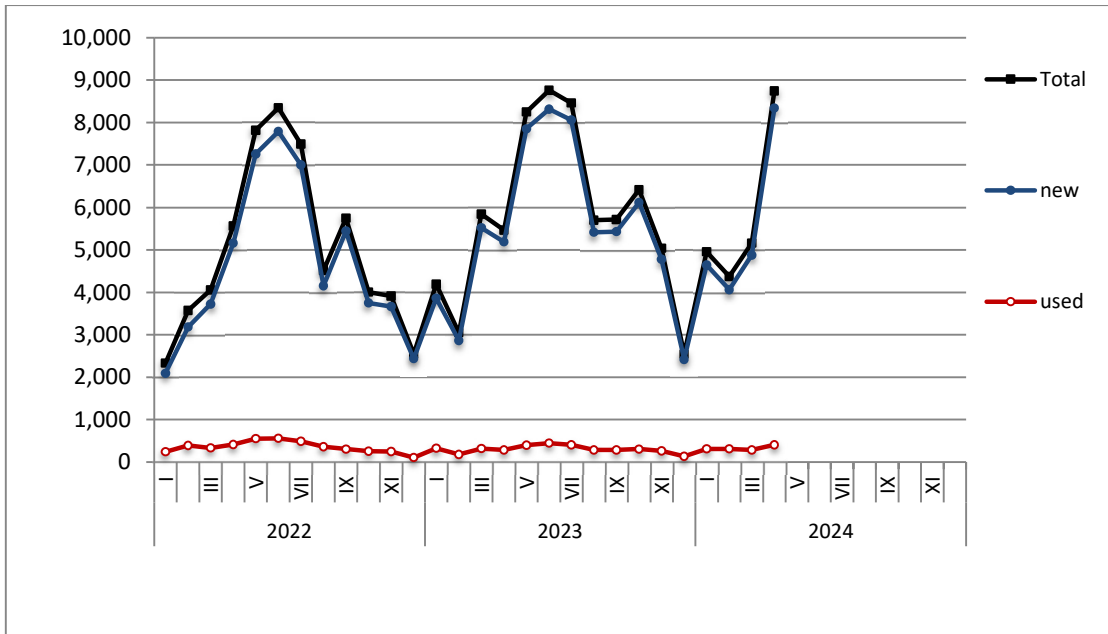
**Graph 2: Lorries (January 2022 – April 2024)**



**Graph 3: Buses (January 2022 – April 2024)**



**Graph 4: Motorcycles (January 2022 – April 2024)**



**Graph 5: New Registrations of Motor Vehicles (April 2024)**

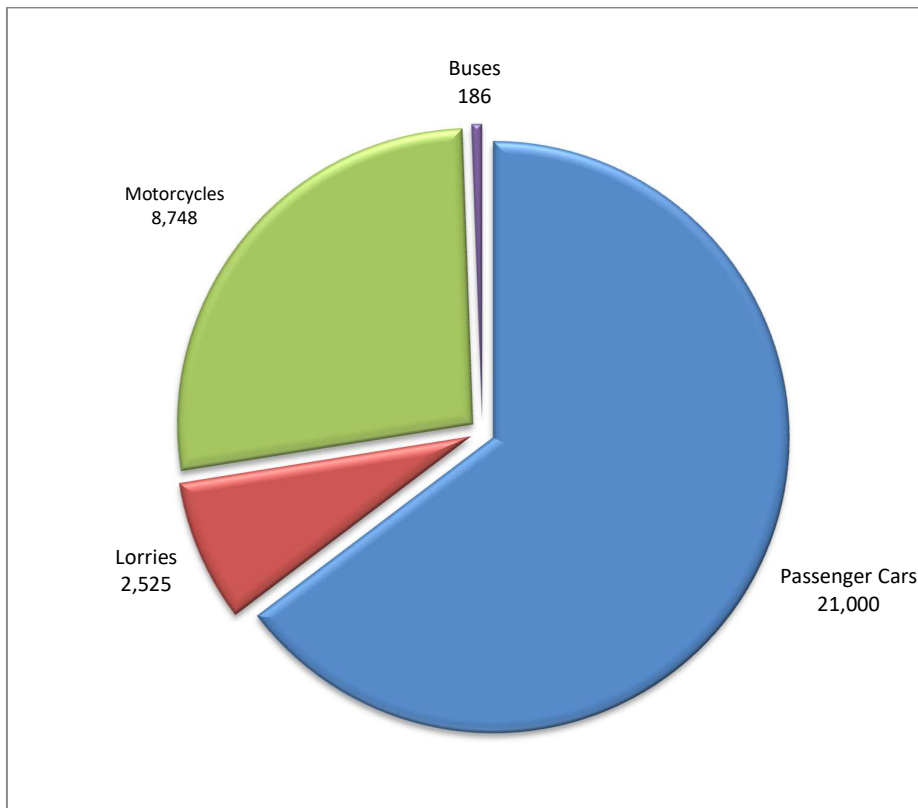
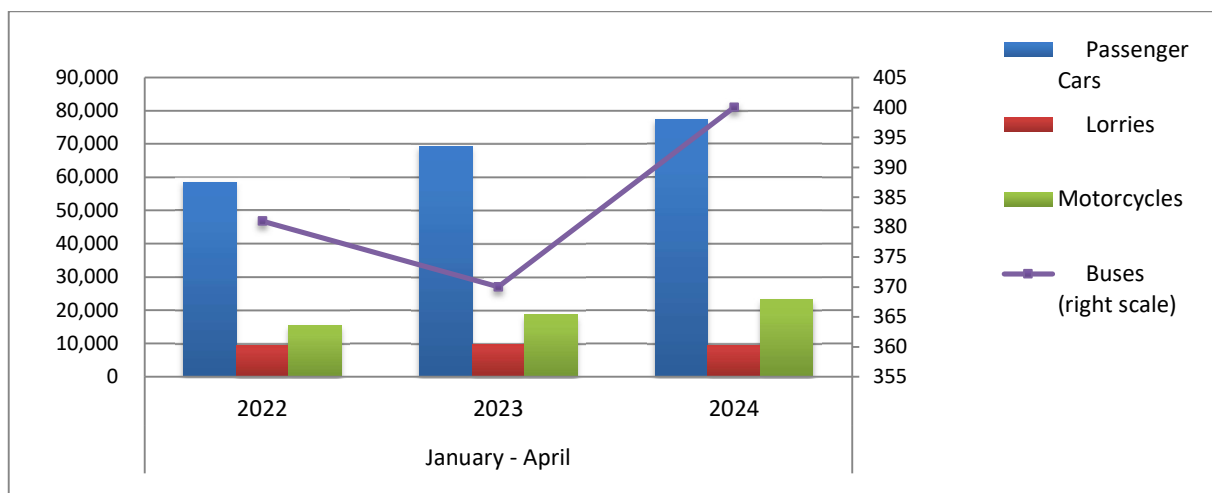
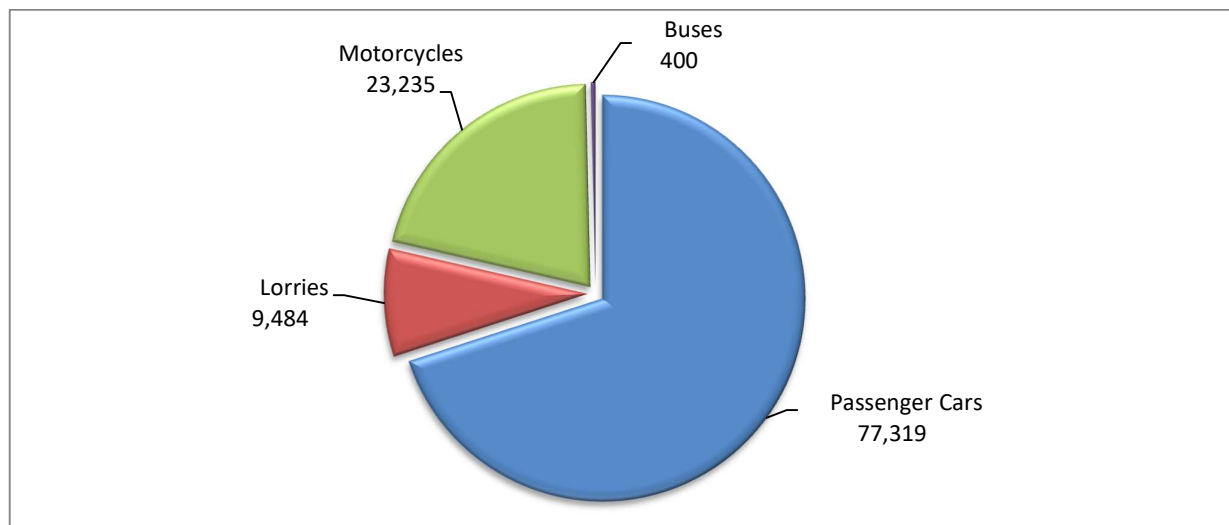


Table 3. Road motor vehicles, both new and used, put into circulation for the first time in Greece: January - April, years 2022 till 2024															
Category of Road Motor Vehicles	January - April									Change (%)					
	2022			2023			2024			2023/2022			2024/2023		
	Total	New	Used	Total	New	Used	Total	New	Used	Total	New	Used	Total	New	Used
<b>Greece, total</b>															
Road Motor Vehicles,total	83,743	48,955	34,788	97,926	65,301	32,625	110,438	75,631	34,807	16.9%	33.4%	-6.2%	12.8%	15.8%	6.7%
1. Road motor cars	68,220	34,796	33,424	79,387	47,865	31,522	87,203	53,714	33,489	16.4%	37.6%	-5.7%	9.8%	12.2%	6.2%
Passenger Cars	58,545	31,731	26,814	69,287	44,000	25,287	77,319	50,136	27,183	18.3%	38.7%	-5.7%	11.6%	13.9%	7.5%
Buses	381	60	321	370	72	298	400	155	245	-2.9%	20.0%	-7.2%	8.1%	115.3%	-17.8%
Lorries	9,294	3,005	6,289	9,730	3,793	5,937	9,484	3,423	6,061	4.7%	26.2%	-5.6%	-2.5%	-9.8%	2.1%
2. Motorcycles > 50 cc	15,523	14,159	1,364	18,539	17,436	1,103	23,235	21,917	1,318	19.4%	23.1%	-19.1%	25.3%	25.7%	19.5%
<b>Prefecture of Attica</b>															
Road Motor Vehicles,total	44,027	30,564	13,463	55,604	42,275	13,329	60,997	47,450	13,547	26.3%	38.3%	-1.0%	9.7%	12.2%	1.6%
1. Road motor cars	36,351	23,309	13,042	46,351	33,369	12,982	49,595	36,411	13,184	27.5%	43.2%	-0.5%	7.0%	9.1%	1.6%
Passenger Cars	32,528	21,370	11,158	42,025	30,868	11,157	45,761	34,323	11,438	29.2%	44.4%	0.0%	8.9%	11.2%	2.5%
Buses	150	28	122	185	48	137	240	120	120	23.3%	71.4%	12.3%	29.7%	150.0%	-12.4%
Lorries	3,673	1,911	1,762	4,141	2,453	1,688	3,594	1,968	1,626	12.7%	28.4%	-4.2%	-13.2%	-19.8%	-3.7%
2. Motorcycles > 50 cc	7,676	7,255	421	9,253	8,906	347	11,402	11,039	363	20.5%	22.8%	-17.6%	23.2%	24.0%	4.6%

**Graph 6. New Motor Vehicles Circulation Licenses: January – April, years 2022 till 2024**



**Graph 7. New Registrations of Motor Vehicles: January – April 2024**



**Table 4**  
**Sales of new and used passenger cars by make: April 2024 and January - April 2024**

Make	Passenger cars			
	April		January - April	
	new	used	new	used
ABARTH	1	-	2	1
ADRIA	-	-	-	1
ADRIA, SUN LIVING, ELIOS	-	-	2	-
ALFA ROMEO	26	38	112	155
ALPINA	1	1	1	1
ASTON MARTIN	-	1	-	3
AUDI	343	142	1,473	573
BENTLEY	3	-	5	4
BMW	371	285	1,934	1,008
BURSTNER	-	-	-	4
BYD	19	-	25	-
CAPRON	-	2	11	6
CARTHAGO	1	-	1	-
CHEVROLET	-	7	-	43
CITROEN	475	278	1,258	946
CITROEN / DS	276	67	2,561	159
CITROEN, PEUGEOT	-	1	-	1
CUPRA	133	6	418	12
DACIA	380	167	1,087	645
DAIHATSU	-	3	-	4
DETHLEFFS	-	-	-	4
DODGE	-	1	-	4
DS	56	8	207	34
EURA MOBIL	-	-	1	1
FERRARI	-	3	-	7
FIAT	522	324	2,048	1,145
FORD	280	488	1,227	1,830
FORD <sup>2</sup>	-	-	1	-
HOBBY	-	-	-	1
HONDA	37	69	114	223
HYMER	-	-	1	3
HYUNDAI	998	606	3,519	2,328
INEOS	-	1	-	1
INFINITI	-	5	-	22
JAGUAR	12	23	35	84
JEEP	126	51	532	176
KABE	-	1	-	1
KIA	345	169	1,460	544
KNAUS	-	2	-	4
LADA	-	1	-	2
LAMBORGHINI	-	1	-	8
LANCIA	-	1	-	9
LAND ROVER	72	64	231	256
LEXUS	27	5	84	22
LOTUS	-	-	-	1
LYNK&CO	2	-	2	-
MAN	-	1	-	1
MASERATI	2	8	6	14

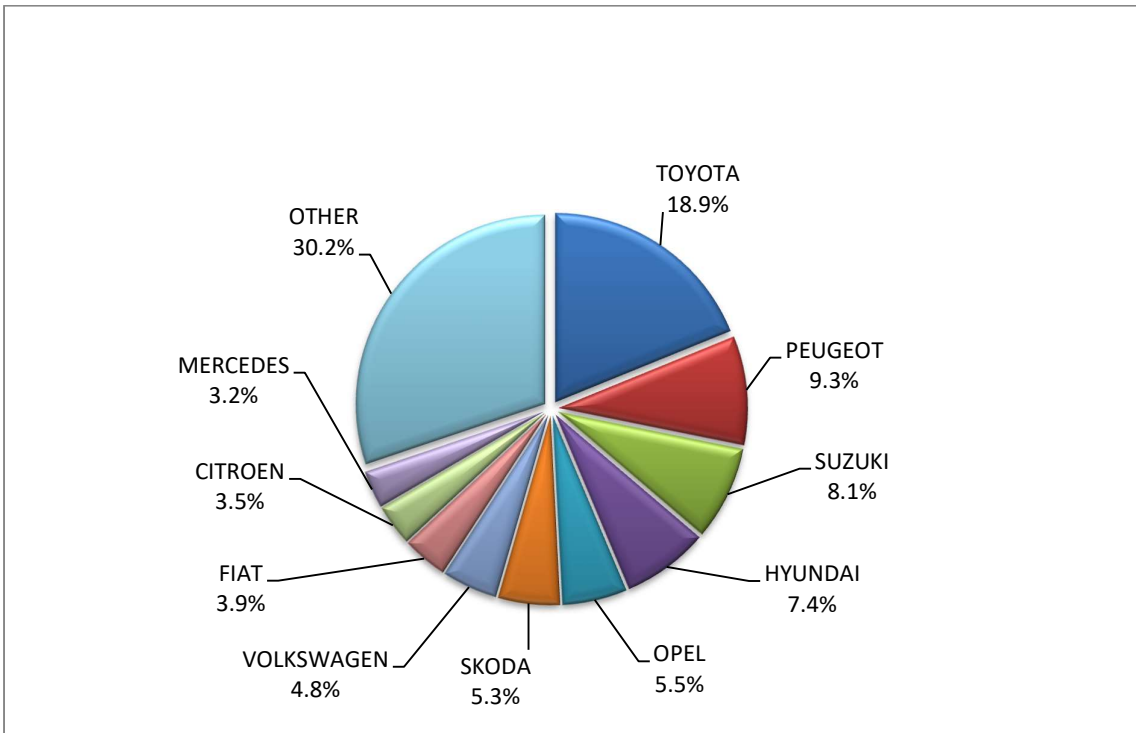
**Table 4 (cont)**  
**Sales of new and used passenger cars by make: April 2024 and January - April 2024**

Make	Passenger cars			
	April		January - April	
	new	used	new	used
MAXUS, LDV	-	-	3	-
MAZDA	173	18	691	106
MCLAREN	-	1	-	2
MERCEDES	432	614	1,332	2,165
MERCEDES <sup>1</sup>	-	-	2	-
MG	15	-	88	2
MG, ROEWE	274	5	1,130	10
MINI	84	46	461	217
MITSUBISHI	62	132	168	367
MORRIS	-	-	-	1
NISSAN	171	500	2,028	1,939
NISSAN <sup>1</sup>	1	-	9	-
OPEL	744	487	3,154	1,793
PEUGEOT	1,252	525	4,550	1,742
PEUGEOT <sup>2</sup>	3	-	22	-
PORSCHE	31	48	86	206
PSA AUTOMOBILES	-	-	-	2
RANGE ROVER	-	3	1	13
RENAULT	335	757	1,027	2,680
RENAULT <sup>1</sup>	-	-	1	-
ROLLER TEAM	1	-	3	1
SEAT	113	64	544	233
SERES, DFSK, SOKON, AITO	2	-	11	-
SKODA	709	268	1,901	817
SMART	7	162	33	500
SUBARU	4	7	20	29
SUZUKI	1,085	154	3,555	547
TESLA	175	5	678	25
TOYOTA	2,535	574	7,766	2,143
TRIGANO	-	-	-	4
VOLKSWAGEN	640	323	2,080	1,237
VOLVO	91	29	427	111
VOYAH	-	-	1	-
YODO, YUN	1	-	6	-
<b>TOTAL</b>	<b>13,448</b>	<b>7,552</b>	<b>50,136</b>	<b>27,183</b>

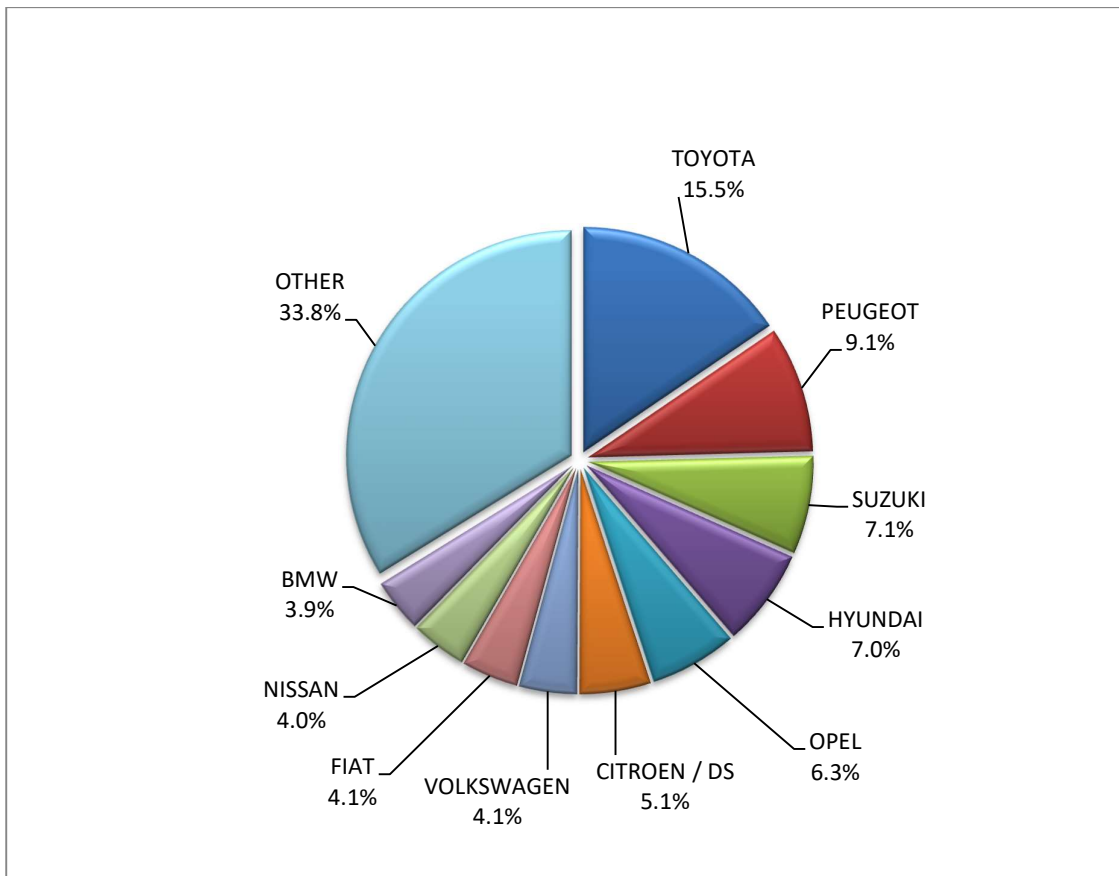
1 : With 2nd/3rd stage manufacturer in Greece.

2 : With 2nd/3rd stage manufacturer abroad.

**Graph 8. Sales of new passenger cars by make (April 2024)**



**Graph 9. Sales of new passenger cars by make (January – April 2024)**





**Table 5**  
**Sales of new and used lorries by make: April 2024 and January - April 2024**

Make	Lorries			
	April		January - April	
	new	used	new	used
ADDAX MOTORS, ISEKI, STAMA	1	-	1	3
ASTRA	-	1	-	1
BMC Otomotiv Sanayi ve Ticaret A.Ş. <sup>1</sup>	1	-	1	-
BYD	3	-	3	-
CHRYSLER	-	-	-	3
CITROEN	36	57	253	184
DACIA	-	8	1	27
DAF	1	31	1	122
DAF <sup>1</sup>	1	-	2	-
DAIHATSU	-	-	-	2
DENNIS EAGLE	-	-	-	1
DODGE	-	1	-	6
FCA US LLC	-	-	-	1
FIAT	50	140	305	462
FIAT DUCATO <sup>1</sup>	1	-	1	-
FIAT-IVECO	-	3	-	6
FORD	152	305	615	1,090
FORD <sup>1</sup>	8	-	8	-
GOUPIL, MEGA, POLARIS, GEM	3	-	4	-
HYUNDAI	-	2	-	8
ISUZU	24	27	86	92
IVECO	2	48	14	138
IVECO <sup>1</sup>	10	-	18	-
JEEP	4	-	10	5
KIA	-	-	-	2
LAND ROVER	-	1	-	3
MAGIRUS	-	-	-	1
MAN	-	88	1	331
MAN <sup>1</sup>	2	-	11	1
MAXUS, LDV	3	1	20	2
MERCEDES	27	440	83	1,519
MERCEDES <sup>1</sup>	16	2	30	2
MERCEDES <sup>2</sup>	-	-	2	1
MITSUBISHI	1	25	4	131
MITSUBISHI <sup>1</sup>	14	1	23	1
NISSAN	1	50	29	179
NISSAN <sup>1</sup>	1	-	3	-
OAF	-	1	-	1
OPEL	28	61	168	201
PEUGEOT	46	53	246	211
PFAU	-	1	-	2
PIAGGIO	-	5	3	16
PIAGGIO <sup>1</sup>	1	-	3	-
PIAGGIO <sup>2</sup>	1	2	4	2

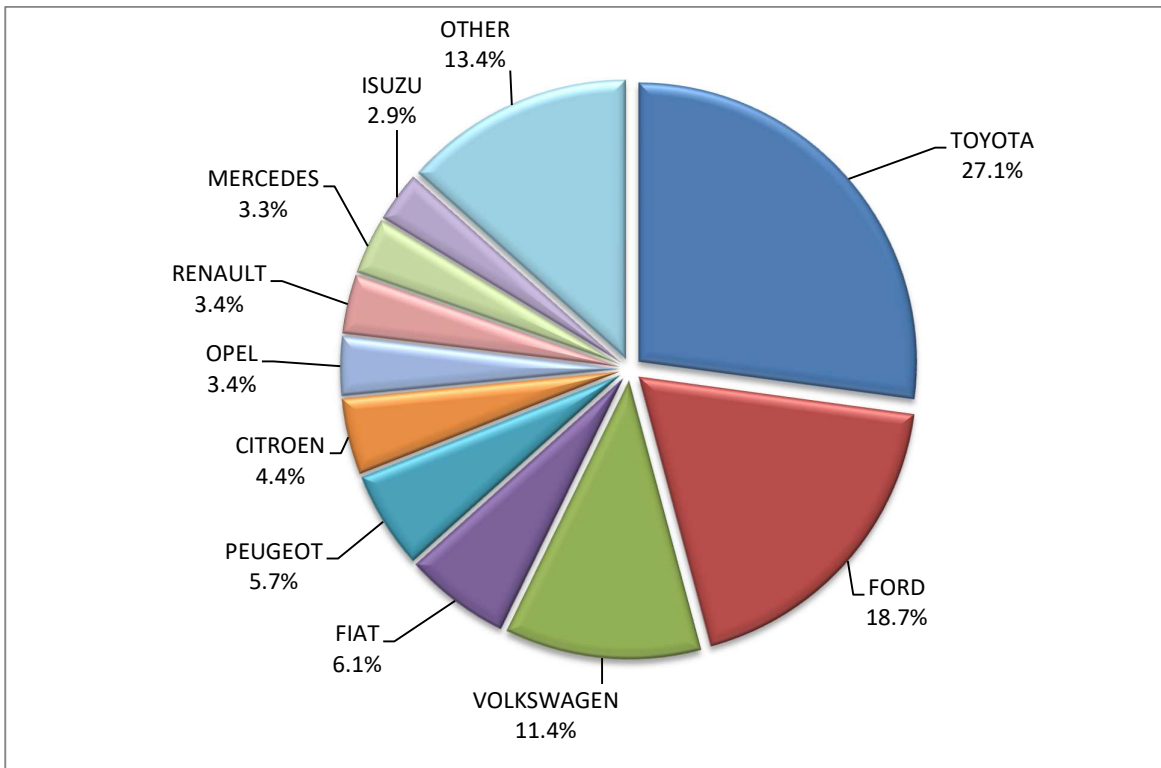
**Table 5 (cont)**  
**Sales of new and used lorries by make: April 2024 and January - April 2024**

Make	Lorries			
	April		January - April	
	new	used	new	used
RENAULT	28	136	116	434
SCANIA	2	55	20	170
SCANIA <sup>1</sup>	-	-	1	-
SCATTOLINI, NISSAN	-	-	-	1
SEAT	-	1	-	1
SKODA	-	4	1	16
SPIER	-	2	-	2
SSANGYONG	-	-	-	1
STEYER	-	1	-	2
SUZUKI	12	-	79	-
TOYOTA	221	35	915	179
TOYOTA <sup>1</sup>	-	-	1	-
VOLKSWAGEN	93	59	262	256
VOLVO	11	64	51	237
VOLVO <sup>1</sup>	9	-	24	5
<b>TOTAL</b>	<b>814</b>	<b>1,711</b>	<b>3,423</b>	<b>6,061</b>

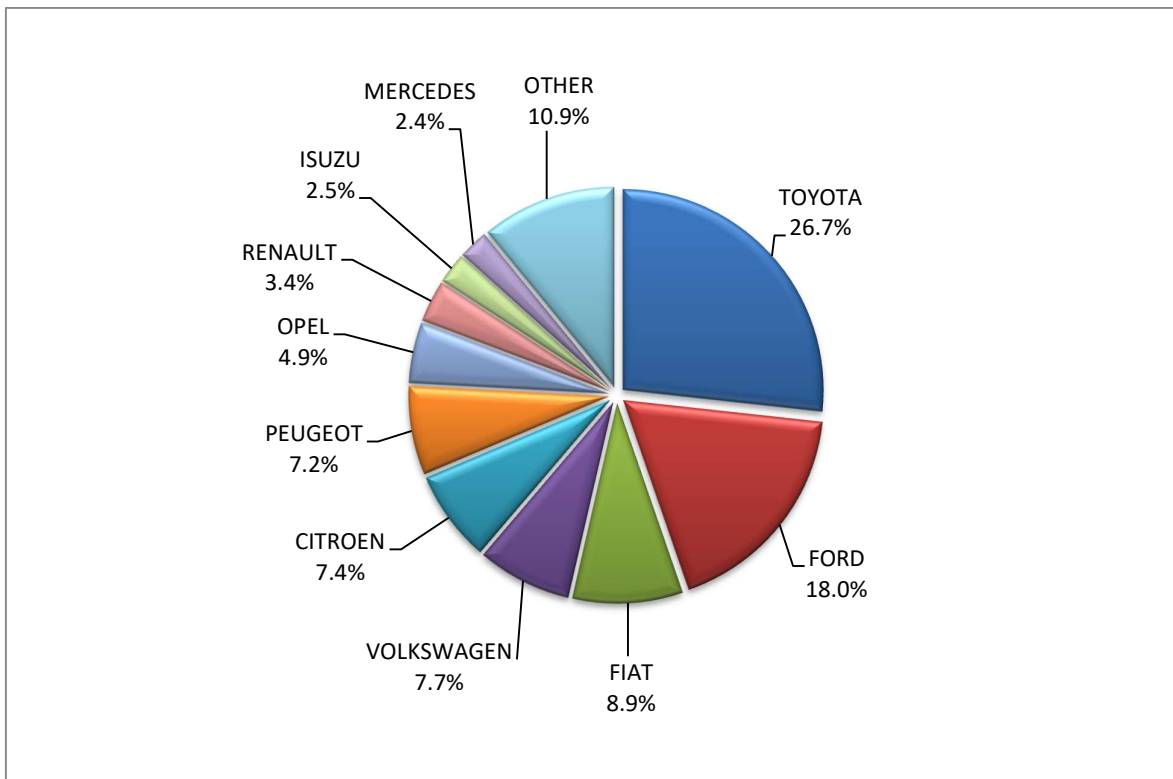
**1 : With 2nd/3rd stage manufacturer in Greece.**

**2 : With 2nd/3rd stage manufacturer abroad.**

**Graph 10. Sales of new lorries by make (April 2024)**



**Graph 11. Sales of new lorries by make (January – April 2024)**



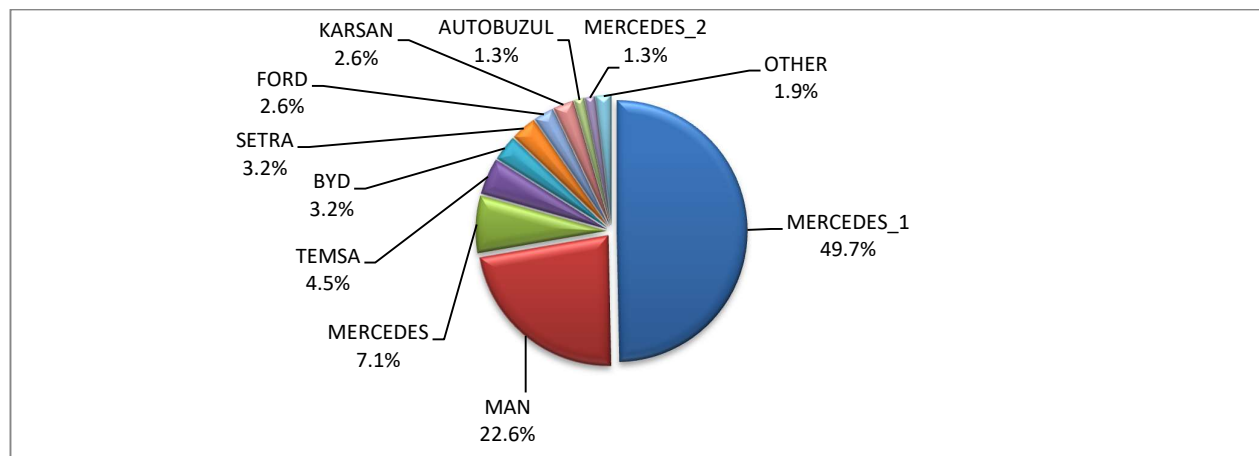
**Table 6**  
**Sales of new and used buses by make: April 2024 and January - April 2024**

Make	Buses			
	April		January - April	
	new	used	new	used
AUTOBUZUL	2	-	2	-
BMC	-	1	-	1
BOVA	-	2	-	10
BYD	5	-	5	-
DAF	-	1	-	1
FORD	3	1	4	6
ISUZU	-	-	-	1
ISUZU, AOS, GLOBUS	-	-	1	-
IVECO	-	-	1	1
IVEKO <sup>2</sup>	-	-	1	-
KARSAN	-	-	4	-
KASSBOHRER	-	1	-	1
MAN	21	3	35	13
MAN/NEOPLAN	-	-	-	2
MERCEDES	6	82	11	173
MERCEDES <sup>2</sup>	1	-	2	1
MERCEDES <sup>1</sup>	33	-	77	-
NEOPLAN	-	1	-	8
OTOKAR	-	-	-	1
RENAULT	-	-	-	1
SCANIA	-	2	-	2
SETRA	4	9	5	19
TEMSA	6	2	7	2
VOLKSWAGEN	-	-	-	1
VOLVO	-	-	-	1
<b>TOTAL</b>	<b>81</b>	<b>105</b>	<b>155</b>	<b>245</b>

1 : With 2nd/3rd stage manufacturer in Greece.

2 : With 2nd/3rd stage manufacturer abroad.

**Graph 12. Sales of new buses by make (January – April 2024)**



**Table 7**

**Sales of new and used motorcycles by make or manufacturer: April 2024 and January - April 2024**

Make	Motorcycles			
	April		January - April	
	new	used	new	used
AEON MOTOR	-	-	-	1
AJP	-	-	1	-
APRILIA	46	5	138	17
APRILIA, SCARABEO	-	-	-	1
ARENA, ELYX, MIFUN, VMOTO	2	-	4	-
ARIIC, JINLANG	10	-	14	-
ARMONY, ARORA, BUKE, BULL MOTORS	1	-	18	-
ASUS, YUKI, RATO, DOCKER, MIGLIORI, VICTORY, AVETA	33	-	40	-
BAJAJ	6	-	18	-
BASHAN, AMGroup, AMGroup Bike, DON, IRBIS, WORKER BEAR, Nomik ATV 2	4	-	9	1
BAW, NIEVE, RELIVE	-	-	20	-
BENELLI	128	1	366	2
BETA	17	1	58	6
BMW	143	21	371	122
BOMBARDIER RECREATIONAL PRODUCTS ING (BRP)	5	-	6	1
BRIXTON	16	-	35	-
BUELL	-	1	-	1
BUGGYCAR, HOLLYBEACH, ITALCAR	9	-	9	-
CF MOTO, CSR, QUAZILLA	-	-	-	1
CFMOTO	264	2	567	3
CFMOTO, KEEWAY	14	-	33	-
CFMOTO, WHITE KNUCKLE, MONDIAL, JUNAK	-	-	-	1
CFMOTO, ZEEHO	14	-	16	-
CHONGQING	-	1	-	1
DAYANG, DAYTONA MOTORS, NIPPONIA, DOCKER, WAYEL, SUMCO, VEEROAD, CETUR, RUTEC	-	-	1	-
DAYANG, DAYTONA MOTORS, NIPPONIA, DYMOTO, DOCKER, VEEROAD, EVO MOTORS, SUMCO, CETUR, HANSOM	-	-	2	-
DAYANG, DAYTONA MOTORS, NIPPONIA, DYMOTO, VEEROAD, EVO MOTORS, MH MOTORCYCLES, FKM, FKMOTORS,	20	-	54	-
DAYANG, DAYTONA MOTORS, NIPPONIA, KUBA, VEEROAD, SUMCO, CETUR, RUTEC	69	-	255	-
DAYANG, DAYTONA MOTORS, NIPPONIA, VEEROAD	37	-	159	-
DAYANG, DAYTONA MOTORS, NIPPONIA, VEEROAD, DOCKER	82	-	208	-
DAYANG, DAYTONA MOTORS, NIPPONIA, VEEROAD, RUTEC, CETUR	140	-	373	-
DAYANG, DYMOTO, DAYTONA MOTORS, NIPPONIA, MH MOTORCYCLES, ORCAL, SUMCO, KUBA, RKS, RUTEC	9	-	29	-
DAYANG, ECOCREMO, ECOOTER, ECOOTOR,AGM, ORCAL, SUMCO	1	-	4	-
DAYANG, NIPPONIA, DAYTONA MOTORS, VEEROAD, SUMCO, DOCKER, MH MOTORCYCLES	3	-	7	-
DAYANG, DAYTONA MOTORS, NIPPONIA, DOCKER, WAYEL, SUMCO, VEEROAD, CETUR, RUTEC, ZENKO	1	-	3	-
DAYTONA	7	-	23	-
DAYTONA MOTORS, DAYANG, DYMOTO, NIPPONIA, MH MOTORCYCLES, ORCAL, SUMCO, RUTEC, AJS	6	-	12	-
DAYTONA MOTORS, DAYANG, NIPPONIA, DYMOTO, DOCKER, VEEROAD, EVO MOTORS, SUMCO, CETUR, HANSOM, RUTEC	5	-	16	-
DAYTONA MOTORS, EVO MOTORS, LONGJIA, ORCAL, NECO, VGA, ROMET MOTORS, DRAX, MONDIAL, JUNAK, ONLINE	-	-	2	-
DAYTONA MOTORS, YINGANG, KUBA, RKS, SKYJET, MAGPOWER, MITT, VENTUR, ARCHIVE MOTORCYCLE	2	-	5	-

**Table 7 (cont)**

**Sales of new and used motorcycles by make or manufacturer: April 2024 and January - April 2024**

Make	Motorcycles			
	April		January - April	
	new	used	new	used
Daytona Motors, ZONTES, TAYO, KIDEN, Haojiang, ZHONGYU, Sharpon, TANNY, TYAN, Senke, B BETA	3	-	40	-
DERBI	-	1	-	2
DIVINE STAR&MOON, GSMOON	-	-	-	1
DMEMOTO, Elyx Smart, OPAI, DME	1	-	2	-
Dofern, Frison scooter, skootec, passion, Elektra EV, CJR	1	-	1	-
DONGBEN, GANCIN, DIRONG, KRAL	1	-	4	-
DOOHAN	1	-	1	-
DUCATI	31	11	64	32
E.F.O., GOLDEN LION, SAKURA, ARTISAN, Fauro, ETALIAN, Viverra, Varaneo, Kito, E-mio, velca, E-KUMA, BOLIDE	1	-	2	-
EAGLE	-	1	-	1
ECOOTER, ETRIX, AGM, DRAX, ORCAL, SUMCO	2	-	9	-
EFUN, ZAP	1	-	10	-
EFUN, ZAP, FRISON, easy-watts	7	-	28	-
EMBUGGY, EVANGEL, The Original BeachBuggy, Beach Buggy	9	-	9	-
FANGPOWER, Kontio Motors	2	-	3	-
FANTIC MOTOR	1	-	6	-
FD MOTORS, FASPIDER, Daytona Motors, EVO Motors, Veeroad	2	-	5	-
FD MOTORS, FASPIDER, DAYTONA MOTORS, NIPPONIA, QUANTYA	1	-	9	-
GASGAS	1	-	10	1
GENERIC, EXPLORER, MALANCA, KSR Moto Austria, Motron Motorrad	4	-	12	-
GENERIC, QJ, QJIANG, EXPLORER, RIDE	-	-	-	1
GILERA	-	1	-	1
GOCCIA, E-ZI, AGM, SFM, VGA, SACHS, SAXXX, KEEWAY, Vengo, Viarelli, EZI, E ZI	2	-	2	-
GOLDEN LION, SAKURA, ARTISAN, ETALIAN, E-mio, Fauro, Kito, Varaneo, Virerra, E.F.O., BOLIDE, E-KUMA, velca	2	-	2	-
GPX	17	-	45	-
GUSITE, RKS, KUBA, KOKO, KAVIR, BECANE, EVO MOTORS, Daytona MOTORS, SUMCO, SKYJET	36	-	56	-
Haojiang, ZONTES, TAYO, Sharpon, IFINO, KIDEN, ZHONGYU, CUBTOM, DIYUN, NAMIN, TIM DERVI, VUKA, THUMP, R-ipper	3	-	22	-
HAOJIN, LETBE, KUBA, RKS, SKYJET	1	-	1	-
HARLEY DAVIDSON	3	15	8	65
HONDA	1,232	81	4,170	206
HOOOON, PICKMAN	-	-	1	-
HORWIN	1	-	5	-
HUSQVARNA	15	7	42	26
HYOSUNG	-	1	1	1
IIFSTEV, IIFSTMUTO	4	-	4	-
INDIAN MOTORCYCLE	1	-	8	1
ITALJET	-	1	1	1
JIAYUAN	7	-	30	-
JINMA, RUNHORSE, FARAD, hopster, DuroCar	-	-	1	-
JNEN, JUNENG, ZIPP, MOTORAN, HORS	2	-	16	-
JNEN, JUNENG, ZIPP, MOTORAN, HORS, FLEX TECH, RAZZO, TOROS, ONE, JUNAK	12	-	32	-
JNEN, JUNENG, ZIPP, MOTORAN, ONE, RAZZO, FLEX TECH, TOROS, JUNAK, TURBHO, PEZAL	16	-	70	-
JNEN, JUNENG, ZIPP, MOTORAN, ONE, RAZZO, FLEX TECH, TOROS, JUNAK, TURBHO, PEZAL, ALPHA-MOBIL	22	-	23	-
JONWAY, DAYTONA MOTORS, EVO MOTORS	1	-	2	-

Table 7 (cont)

## Sales of new and used motorcycles by make or manufacturer: April 2024 and January - April 2024

Make	Motorcycles			
	April		January - April	
	new	used	new	used
JONWAY, SHENKE, HUIBANG, JMSTA	-	-	2	-
KAMAX	-	-	1	-
KAWASAKI	20	8	60	41
KEEWAY	2	-	9	-
KEEWAY, KUBA	3	-	14	-
KEEWAY, LONGJIA	21	-	52	-
KSR MOTO AUSTRIA, MOTRON MOTORRAD	2	-	8	-
KTM	75	24	217	95
KUBA, MH MOTORCYCLES, MGB, SHINERAY, Daytona Motors, MASH	10	-	22	-
KWANG YANG	-	-	-	1
KYMCO	289	50	755	131
LIGIER	-	-	-	1
Lingzhida, LINZDA, LINDN, LINYI, LONGMAO, NLIGHT	-	-	2	-
LINHAI, LHY, KUBA, ONLINE	8	-	8	-
LOJO, RAINWOLL	-	-	7	-
LOJO, SUNPULSE, YGM	2	-	2	-
LONCIN, KINLON, LONGTING, KUBA, YUKI, MONDIAL, STMAX, KANUNI, MOTORAN, ASYA, QUSWA, PUMAREX, RALLY USA, MOD, CCM	8	-	35	-
LONCIN, KUBA, RKS, ITALIKA, VOGÉ, SUNRACE, SKY, MALAGUTI, ROCKET, SUPERBIKE, NOVELBAT, TRIDIAMOND	33	-	87	-
LONCIN, VOGÉ	13	-	27	1
LONCIN, VOGÉ, KUBA, RKS, ITALIKA, SUNRACE, SKY, MALAGUTI, SUPERBIKE, ROCKET, NOVELBAT, TIGREMOTO, GREEN	-	-	6	-
LONCIN, VOGÉ, VOGÉPRO	162	-	388	-
LONCIN, KUBA, RKS, ITALIKA, SUNRACE, SKY, MALAGUTI, SUPERBIKE, ROCKET, NOVELBAT, TIGREMOTO, GREEN	1	-	4	-
LONGJIA, ORCAL, NECO, ALFASCOOTERS, VGA, ROMET MOTORS, BARTON MOTORS, OVER, CAROLYN, KANUNI, BTC	49	1	117	1
LONGJIA, ORCAL, NECO, ALFASCOOTERS, VGA, ROMET MOTORS, RYMCO, ASUS, OVER, CAROLYN, KANUNI, BTC, TURBHO, ITALMOTO	1	-	1	-
LONGJIA, ORCAL, NECO, VGA, ROMET MOTORS, DRAX, MONDIAL, JUNAK	1	-	1	-
LONGJIA, ORCAL, NECO, VGA, ROMET MOTORS, ROUTER, Iexmoto, Gemini, MH, motorcycles	1	-	1	-
LONGJIA, ORCAL, NECO, VGA, ROMET MOTORS	54	-	86	-
LONGJIA, VICTORIA, VICTORIA MOTORRAD, ORCAL, NECO, VGA, BTC, ALFASCOOTERS, ROMET MOTORS	30	-	95	-
LONGJIA, Zündapp, VGA, NECO, BTC, AGM, ALFASCOOTERS, ROMET MOTORS, Kudaki, BARTON MOTORS, OVER BIKES	33	-	34	-
LUQI, TWISTER WHEEL, SPYDER WHEELZ, DJJD, GTS, TEKUON, Eway, Emoto, Bikers, i-coco	1	-	1	-
LVNENG	1	-	7	-
LONGJIA, ZUNDAPP, VGA, NECO, BTC, ALFASCOOTERS, ROMET MOTORS	1	-	6	-
MACBOR, RVM, COLOVE, DAYTONA MOTORS, ZF-KY, online, KOVE	40	-	40	-
MACBOR, RVM, COLOVE, ORCAL, DAYTONA MOTORS, ZF-KY, Iexmoto, OVER BIKES, YUKI, AJS	5	-	19	-
MALAGUTI	39	-	156	2
MBK	-	-	-	3
MBP, Morbidelli, KEEWAY, KUBA, RKS	2	-	2	-
MGK HM	199	-	609	1
MICRO	9	-	10	-
MODENAS	-	-	-	1

**Table 7 (cont)**

**Sales of new and used motorcycles by make or manufacturer: April 2024 and January - April 2024**

Make	Motorcycles			
	April		January - April	
	new	used	new	used
MONTESA	-	-	-	1
MOTO GUZZI	18	-	37	2
MOTO MORINI	4	-	11	-
MOTRON MOTORRAD	1	-	3	-
MOTRON MOTORRAD, ZONGSHEN	1	-	1	-
MV AGUSTA	-	-	-	1
NACIONAL MOTOR SAU	-	-	-	1
NERVA	-	-	2	-
NEWBOT	-	-	1	-
NIU, NUUV	3	-	8	-
ODES	1	-	11	-
OPAI	1	-	1	-
ORCAL, SOMOTO, AJS, SENKE, HERALD, ITALJET, WACCO, MOTOBI, CLEVELAND CYCLEWERKS ACE, MERCURY, SAXXX, SFM	-	-	1	-
PEUGEOT	68	1	126	3
PIAGGIO	1,110	42	2,683	106
PILOTCAR	1	-	2	-
POLARIS	12	1	34	4
QINGQI, CLEVELAND, CYCLEWERKS ACE, CLEVELAND ACE, CLEVELAND CYCLEWERKS ACE DELUXE	-	1	-	1
QJ, QJIANG, KEEWAY, LEONE, RKS, BENELLI, EMPIRE KEEWAY, KUBA	1	1	1	2
QJ, QJIANG, QJMOTOR, B MOTOBI	82	-	182	-
QJ, QJIANG, QJMOTOR, B MOTOBI, QJTEC	89	-	134	-
REDMOTO	1	-	2	-
REGIS	-	-	-	1
RENAULT	-	1	-	1
RENLI	16	-	24	-
RIEJU, DRAC	-	-	3	-
RIYA, RYMOTO, KUBA, RKS, LEXMOTO, MITT, ALPHA MOTORS, IMF, ROMET, ZIPP, ARORA, ZORRO, MOJITO	1	-	1	-
ROYAL ENFIELD	36	-	93	2
Royalloy, Royal Alloy, RA	1	-	5	-
SAKURA, GOLDEN LION, ARTISAN, Fauro, ETALIAN, Viverra, Varaneo, Kito	14	-	26	-
SAKURA, GOLDEN LION, ARTISAN, Fauro, ETALIAN, Viverra, Varaneo, Kito, E-mio, velca, E.F.O,E-KUMA, BOLIDE, LINZE	3	-	7	-
SCUTUM, ETRIX, SILENCE	-	-	8	-
SEGWAY	37	-	56	-
SHANYANG, ATLAS PANTHER, YAMAZUKI MOTO, MOTORKING, Hirlee, XB	1	-	6	-
SHERCO	4	1	12	7
SHINERAY, SWM	3	-	4	-
SILENCE, SCUTUM, ETRIX	14	-	37	-
SKYTEAM, SACIN, CSR, METALCO, SOKUDO, BAZUKA, MINICO, MOTOSBASI, MOTOS BORDOY, SUMKO, ROXON, MONKEY BIKES	3	-	9	1
SURRON	2	-	5	-
SUZUKI	72	17	214	71
SYM	1,746	13	4,239	54
TARO, JUNAK, BARTON MOTORS ,ORCAL, Lexmoto	19	-	58	-
TARO, JUNAK, BARTON MOTORS, ORCAL, Lexmoto, MITT, NECO, WOTTAN, MAGPOWER, ADAMOTO MOTORCYCLES	9	-	14	-
TARO, JUNAK, BARTON MOTORS, ORCAL, Lexmoto, MITT, NECO, WOTTAN, MAGPOWER, ADAMOTO, MAXON, MAX-ON, TRMOTOR, CHUANL	5	-	15	-



**Table 7 (cont)**

**Sales of new and used motorcycles by make or manufacturer: April 2024 and January - April 2024**

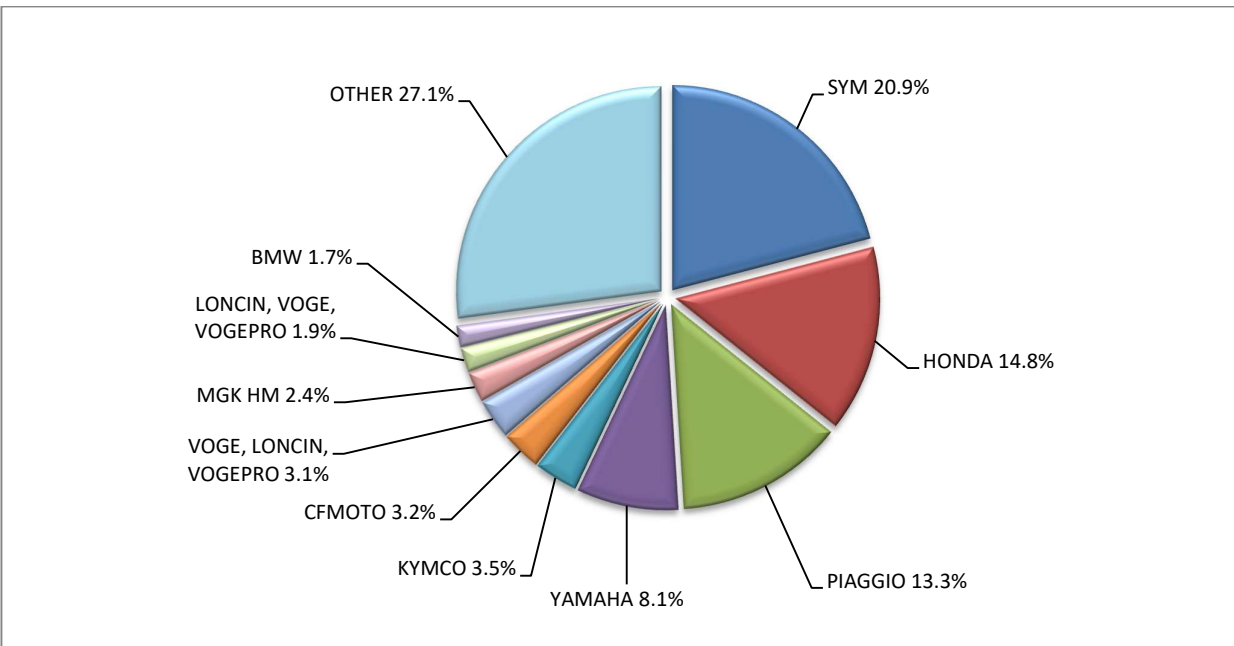
Make	Motorcycles			
	April		January - April	
	new	used	new	used
TARO, TRMOTOR, CHUANL, JUNAK, BARTON MOTORS, Lexmoto, MITT, NECO, WOTTAN MOTOR, Maxon, Max-on, MOTOBI, MOTO B	5	-	6	-
TARO, TRMOTOR, CHUANL, JUNAK, BARTON MOTORS, ORCAL, Lexmoto, MITT, NECO, WOTTAN, MAGPOWER, ADAMOTO MOTORCYCLES	2	-	4	-
TARO, TRMOTOR, CHUANL, JUNAK, Lexmoto, BARTON MOTORS, MITT, NECO, MAXON, WOTTAN MOTOR, MAX-ON, MOTOBI, MOTO B	15	-	22	-
TAYO, HAOJIANG, ZHONGYU, THUMP, THUMPSTAR, KIDEN, ZONTES, Junak, SENKE, TANNY, TYAN, ROMET, ROMET MOTORS, ROUTER	12	-	53	-
TAYO, ZONTES, KIDEN, Haojiang, ZHONGYU, Sharpon, TANNY, TYAN, Senke, B BETA, Daytona Motors	141	1	292	1
TAZZARI	1	-	1	-
TEYIN, TIANYING, XINBEN, SANBEN, ALFASCOOTERS, Alpha Motors, APACHI	1	-	13	-
TGB	2	-	2	1
TIANYING, RIYA, HONGYUNDA, TYM, HONLING, SANBEN, XINBEN, TAMCO, ALISON, DMK MOTORS	-	-	2	-
TIANYING, RIYA, HONGYUNDA, TYM, HONLING, SANBEN, XINBEN, TAMCO, ALISON, DMK MOTORS	4	-	8	-
TIANYING, RIYA, HONGYUNDA, TYM, HONLING, TAMCO, ALISON, DMK MOTORS, WLIE, LEEWAY, WLXQ, AP Gmoto, ALFA	1	-	1	-
TIANYING, RIYA, HONGYUNDA, TYM, SANBEN, XINBEN, TAMCO, ALISON, DMK MOTORS, WLIE, LEEWAY, WLXQ	2	-	6	-
TIANYING, RIYA, SANBEN, TEYIN, TYM, Alfascooters, JORDON, YUKI, YAMASAKI, IVA, SENZO, KillerBee	4	-	6	-
TIANYING, RIYA, SANBEN, TEYIN, TYM, BERMOTO, Capirelli, Gemini, KENTOYA, LGW MOTO, Masaru, Romet, VENTO	-	-	1	-
TINBOT, KOLLTER, MASAI, INTO, VIARELLI, EDRIVE, DuroCar, MGK HM, Fauro, BRINCO	-	-	3	-
TM RACING	1	-	2	-
TRIUMPH	57	2	181	6
UM	15	-	45	-
VELIMOTOR, VOLTAMP, ALTUX, KKL HITECH, WHEELN WATER TECH, ALTUS, NUVEAU MONDE, EN MOTO, YUBEE MOTORS, KKL	1	-	3	-
VELOCIFERO, CECOTEC	1	-	1	-
VMOTO-SOCO, E-MAX, VMOTO, SUPER SOCO	4	-	18	-
VOGE, LONCIN, VOGEPRO	262	-	394	-
VOLTA, VTA, REVOLT	1	-	2	-
VONROAD WJM 150	-	-	-	1
WANGYE, SANBEN, UM, KENOS, SUPERBYKE, MDC, MISTRAL	13	-	32	-
WONJAN, THRUST MOTOR, WMOTO, KEEWAY, TD	34	-	91	-
WUZHENG	1	-	1	-
XEV, X, XEV YOYO	14	-	37	1
XINRI, SUNRA ,APACHI, ISILDAR, ISILDAR APACHI, Wayscral, KRAL	8	-	17	-
YADEA	1	-	2	-
YAMAHA	672	91	2,004	274
ZERO MOTORCYCLES	1	-	4	-
ZHIDOU , ZD, RKS	8	-	9	-
ZHONGNENG, ZNEN, AGM, AJS, YUKI, COLIBRI, EUROCKA, BTC, NOVA MOTORS, LEXMOTO	1	-	1	-
ZHONGNENG, ZNEN, AGM, BTC, CLS, COLIBRI, DAYTONA MOTORS, DERRACE, DOCKER, JM MOTORS, KUBA, La souris, LEXMOTO	20	-	46	-
ZHONGNENG, ZNEN, AGM, YUKI, COLIBRI, LEXMOTO, Minimoto, NECO, ROMET MOTORS	1	-	3	-
ZUNDAPP	-	-	-	1

**Table 7 (cont)**

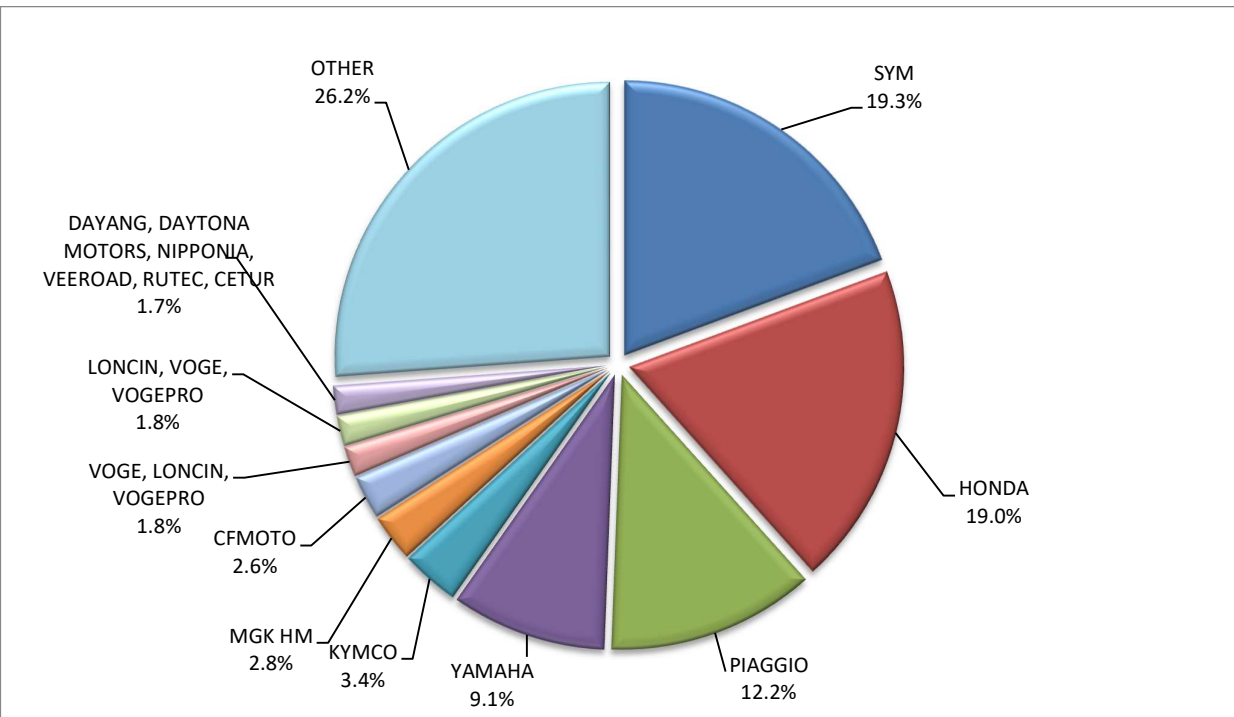
**Sales of new and used motorcycles by make or manufacturer: April 2024 and January - April 2024**

Make	Motorcycles			
	April		January - April	
	new	used	new	used
ZXMCO, NIJ, DAYTONA MOTORS, PINK	2	-	4	-
<b>TOTAL</b>	<b>8,342</b>	<b>406</b>	<b>21,917</b>	<b>1,318</b>

**Graph 13. Sales of new motorcycles (April 2024)**



**Graph 14. Sales of new motorcycles (January – April 2024)**



## EXPLANATORY NOTES

<b>Survey on the issuing of new road motor vehicle circulation licenses</b>	The survey on the issuing of new motor vehicle circulation licenses is a census survey. The released data give information, at country level, on the brand and type of the motor vehicle, as well as whether it is new or used. The survey does not include vehicles that move on rails, trolley busses, agricultural tractors and machinery. In addition, the following are excluded: all motor vehicles of the Armed Forces, Police, Fire Brigade, State Services, Diplomatic Corps, Foreign Missions, and Invalids of Wars, as well as motorcycles with a cylinder capacity less than 50 cc.
<b>Legal basis</b>	Law 3832/2010
<b>Reference Period</b>	April 2024
<b>Coverage</b>	The production of monthly data is based on the registers held by the Ministry of Infrastructure, Transport and Networks, which records all the monthly changes observed in the vehicle registration licenses at country level.
<b>Definitions</b>	<p><b>Road motor vehicle</b> is any vehicle that, irrespective of the number of wheels, is moved by an engine and is designed to transport persons or cargo or both of them, either they are on the same single vehicle or on a trailer carried by the main motor vehicle.</p> <p><b>New</b> road motor vehicle is any motor vehicle that is registered for the first time in Greece during the reference month and has not been put into circulation in any other country.</p> <p><b>Used</b> motor vehicle is any motor vehicle that is registered for the first time in Greece and has been imported as a used one from abroad</p> <p><b>Passenger motor vehicle:</b> it is a motor vehicle designed to carry mostly people, having no more than 9 seats, including the driver's seat.</p> <p><b>Bus:</b> it is a motor vehicle, which is designed to carry mostly people, having more than 10 seats, including the driver's seat. In the corresponding tables of this announcement, this category also includes articulated buses.</p> <p><b>Lorry:</b> it is motor vehicle designed to carry mostly cargo. In the corresponding tables of this announcement, this category also includes tractors, tow trucks, articulated tractors, and trucks with trailers.</p> <p><b>Motorcycle:</b> any two-wheeled motor vehicle, with or without sidecar, with maximum authorized design speed over 45 km/h, or in case it is powered by a combustion engine, with a cylinder capacity of 50 cc or over. In the corresponding tables of this announcement, this category also includes the three-wheeled motor vehicles – motor tricycles.</p> <p><b>Tricycle motor vehicle:</b> it is a motor vehicle with three symmetrical wheels with maximum authorized design speed over 45 km/h, or in case it is powered by a combustion engine, with a cylinder capacity over the 50 cc. This category also includes four-wheel vehicles, except the light four-wheel motorcycles, whose empty vehicle tare (excluding the weight of the fuel or mixture of fuel-oil or the weight of the batteries for electric cars) is up to 400 kg in the case the vehicle is designed for passenger use or up to 550 kg in case the vehicle is designed to carry cargo and whose engine is up to 15KW.</p>
<b>Methodology</b>	Exhaustive Survey. The primary data derive from the Ministry of Infrastructure, Transport and Networks and are based on the issuing of new circulation licenses as they are registered by the Regional Offices for Transport and Communications.
<b>References</b>	More information (graphs, tables) concerning the survey on the issuing of new motor vehicle circulation licenses are available on the webpage of ELSTAT, <a href="http://www.statistics.gr">www.statistics.gr</a> , under the link <a href="http://www.statistics.gr/en/statistics/-/publication/SME24/">http://www.statistics.gr/en/statistics/-/publication/SME24/</a>